

*Department of Human Services  
Health Services  
Office of Mental Health and Addiction Services*

# **MHO UTILIZATION DETAILED REPORT**

FOR  
JULY 2002 – JUNE 2003  
REPORTING PERIOD

*This report was produced by the  
Program Analysis and Evaluation Team  
April 2004*

**EXECUTIVE SUMMARY**  
**REPORT ON OREGON HEALTH PLAN (OHP)**  
**UTILIZATION AND ENROLLMENT FOR**  
**MENTAL HEALTH SERVICES:**  
**JULY 2002 – JUNE 2003**

The following is a summary of the OHP Utilization and Enrollment Report for the period of July 2002 through June 2003. The data were pulled March 1, 2004. All information came from the Office of Medical Assistance Programs' (OMAP) Medicaid Management Information System (MMIS). December 31, 2002, Providence Behavioral Health ended their managed care contract with the State of Oregon. January 1, 2003, Washington County Mental Health started up a managed care contract with the State of Oregon. These contract changes are reflective in the data on this report.

**ENROLLMENT AND ELIGIBILITY SUMMARY**

- Enrollment for all MHOs shows a decrease during this period, decreasing 23.3 percent from 358,867 to 275,324. This decrease is possibly due to the legislative budget cuts to services during the first half of 2003.

**PERCENT OF ENROLLEES SERVED**

- The percent of enrollees served statewide decreased during the first and second quarter of 2003. LaneCare, however, showed a slow and steady increase over this time period; from 7.6 percent to 9.5 percent.
- The lowest proportions were served in the youngest (0-3) and oldest (75+) age groups. The highest proportions were served in the adult (21-64) age group.
- Among the ethnic and cultural groups the highest annual average percent served was Native American/Alaskan (7.2%) and white (6.8%) populations. The lowest percent served was among Hispanics at 1.3%.

## **OUTPATIENT UTILIZATION**

- Verity had the highest volume of members served (approximately 1583 units of service/1,000 members).

## **ACUTE HOSPITAL**

- Approximately 12 percent of consumers were readmitted to acute care within 30 days, while over 26 percent were readmitted within 180 days.
- Approximately 62 percent of consumers were seen in community services within seven days of discharge from hospital care.

# TABLE OF CONTENTS

The format and contents are constructed as follows:

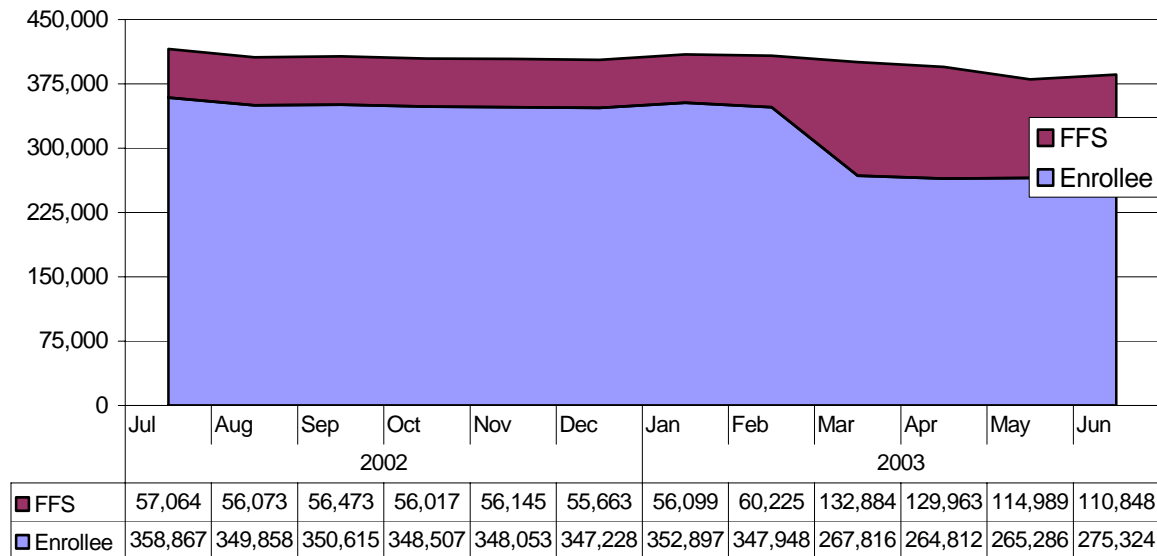
- Figures are used to illustrate trends in statewide data.
- Tables are used to summarize quarterly data at the MHO level. The tables also include FFS and All Eligibles.

.....

Executive Summary .....	i
Figure 1: Statewide Count of MHO Enrolled and Fee-For-Service (FFS) .....	1
Table 1: Monthly Average Enrollment per Quarter by MHO .....	1
Figure 2: Percent of Enrollees and Eligibles Served in Outpatient Services .....	2
Table 2: Mthly Avg/Percent of Enrollees Served Outpatient Mental Health Services .	2
Table 3: Percent of Enrollees Served in Outpatient Mental Health by Age Group and Gender by MHO	
ABHA & Clackamas Tables .....	3
FamilyCare & GOBHI Tables .....	4
JBH & LaneCare Tables .....	5
MVBCN & Providence Tables .....	6
Tuality & Verity Tables .....	7
Washington & FFS .....	8
All Eligibles Tables .....	9
Table 4: Average Percent of Enrollees Served Outpatient Mental Health Services by Ethnicity/Culture by MHO .....	9
Figure 3: Statewide Avg Outpatient Services per 1,000 by Enrollees & All Eligibles ...	13
Figure 4: Annual Avg Outpatient Units of Service per 1,000 in Diagnostic Group .....	14
Table 6: Monthly Average Outpatient Units of Service per 1,000 in Diagnostic Group by MHO	
ABHA .....	14
Clackamas & FamilyCare .....	15
GOBHI & JBH .....	16
LaneCare & MVBCN .....	17
Providence & Tuality .....	18
Verity & Washington .....	19
FFS & All Eligibles .....	20

Figure 5: Annual Avg Outpatient Units of Service per 1,000 by Service Categories.....	21
Table 7: Monthly Avg Outpatient Units of Service per 1,000 by Service Categories	
ABHA .....	21
Clackamas MHO .....	24
FamilyCare, Inc.....	26
GOBHI.....	28
Jefferson Behavioral Health (JBH).....	30
LaneCare.....	32
Mid-Valley Behavioral Care Network (MVBCN).....	34
Providence Behavioral Health.....	36
Tuality Health Alliance (THA).....	38
Verity.....	39
Washington County.....	42
FFS .....	43
All Eligibles.....	45
Figure 6: Statewide Acute Care Hosp. Admissions per 1,000 .....	48
Figure 7: Statewide Acute Care Hosp. Admissions per 1,000 by Age Group.....	48
Table 8: Quarterly Avg Acute Care Admissions per 1,000 by MHO and FFS.....	49
Figure 8: Statewide Annual Avg Acute Hospital Days per 1,000 by Age Group.....	50
Table 9: Quarterly Average Acute Care Hospital Days per 1,000 by MHO .....	51
Figure 9: Statewide - Re-Admitted to Acute Care within 30 days.....	52
Figure 10: Statewide - Re-Admitted to Acute Care within 180 Days.....	53
Figure 11: Statewide - Seen within 7 Days of Dischg from Acute Care.....	53
MHO Utilization Report Glossary.....	54

**FIGURE 1: Statewide Count of MHO <sup>1</sup>Enrolled and <sup>2</sup>Fee-For-Service (FFS)**



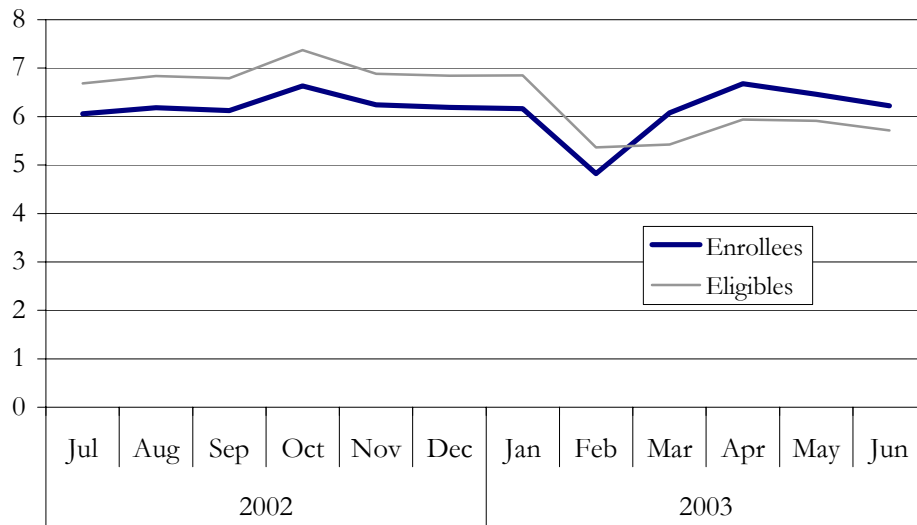
**TABLE 1: Monthly Average Enrollment per Quarter by MHO**

MHO	2002				2003			
	3rd Qtr		4th Qtr		1st Qtr		2nd Qtr	
	AVG/Mo	% of Total	AVG/Mo	% of Total	AVG/Mo	% of Total	AVG/Mo	% of Total
ABHA	25,731	6.3%	25,242	6.3%	23,756	5.6%	19,168	5.0%
Clackamas	24,909	6.1%	24,117	6.0%	22,748	5.4%	19,427	5.0%
Family Care	7,012	1.7%	7,278	1.8%	6,616	1.6%	5,264	1.4%
GOBHI	29,286	7.1%	28,910	7.2%	27,383	6.4%	23,153	6.0%
JBH	67,577	16.5%	66,400	16.4%	61,515	14.5%	49,937	12.9%
Lane Care	35,105	8.6%	34,732	8.6%	31,984	7.5%	26,255	6.8%
MVBCN	62,784	15.3%	61,395	15.2%	58,430	13.7%	50,774	13.1%
*Providence	21,293	5.2%	21,456	5.3%	21,512	5.1%	0	0.0%
Tuality	4,630	1.1%	4,557	1.1%	4,612	1.1%	4,248	1.1%
Verity	74,787	18.3%	73,842	18.3%	68,915	16.2%	56,950	14.7%
**Washington	0	0.0%	0	0.0%	14,636	3.4%	13,299	3.4%
FFS	56,537	13.8%	55,942	13.9%	83,069	19.5%	118,600	30.6%
Total	383,919	93.7%	378,629	93.7%	401,420	94.4%	367,906	95.0%

<sup>1</sup> Enrollees: Eligible for OHP and enrolled in an MHO

<sup>2</sup> Fee-For-Service (FFS): Eligible for OHP and NOT enrolled with an MHO (Open-Card)

**FIGURE 2: Percent of <sup>1</sup>Enrollees and <sup>2</sup>Eligibles Served in Outpatient Services**



**TABLE 2: Monthly Average/Percent of Enrollees Served Outpatient Mental Health Services**

		2002		2003		12 Month Avg
		3rd Qtr	4th Qtr	1st Qtr	2nd Qtr	
MHO Contractors	ABHA	5.6%	5.6%	4.7%	5.3%	5.3%
	Clackamas	4.9%	5.3%	5.2%	5.2%	5.1%
	Family Care	3.9%	1.3%	2.3%	3.6%	2.7%
	GOBHI	4.8%	5.2%	4.8%	5.6%	5.1%
	JBH	5.7%	6.0%	5.5%	5.5%	5.7%
	Lane Care	7.6%	8.1%	8.4%	9.5%	8.4%
	MVBCN	6.6%	7.1%	5.0%	7.2%	6.5%
	*Providence	5.8%	6.2%	5.6%	0.0%	5.9%
	Tuality	3.9%	1.8%	3.2%	3.6%	3.2%
	Verity	7.0%	7.1%	6.2%	6.7%	6.8%
	**Washington	0.0%	0.0%	6.7%	7.2%	7.0%
FFS		10.8%	11.3%	6.8%	4.5%	7.4%
Eligibles		6.7%	7.0%	5.9%	5.9%	6.4%

Note: The percent of unique individuals served is calculated by dividing the unique number served per month by the total available. (MHO: enrolled/served in managed care; FFS: FFS/served "open card".)

<sup>1</sup> Eligibles: Both Enrolled and FFS

<sup>2</sup> Enrollees: Eligible for OHP and enrolled in an MHO

Data Source: MMIS Encounter and Enrollment Tables

\*Providence contract ended December 31, 2002.

\*\*Washington County MHO Agreement became effective January 1, 2003

**TABLE 3: Percent of <sup>1</sup>Enrollees Served in Outpatient Mental Health by Age Group and Gender by MHO – ABHA & Clackamas Tables**

				2002		2003		Annual Average	
MHO Enrollees/ <sup>2</sup> FFS	Age Group	Gender	3 <sup>rd</sup> Qtr	4 <sup>th</sup> Qtr	1 <sup>st</sup> Qtr	2 <sup>nd</sup> Qtr			
<b>MHO Contractors</b>	<b>ABHA</b>	Age 0-3	female	0.2%	0.3%	0.1%	0.1%	0.2%	
			male	0.4%	0.2%	0.2%	0.2%	0.3%	
		Age 4-12	female	3.7%	4.0%	3.0%	3.3%	3.5%	
			male	5.1%	6.2%	4.8%	5.4%	5.4%	
		Age 13-17	female	5.1%	7.3%	6.0%	6.1%	6.1%	
			male	5.2%	6.4%	4.7%	4.8%	5.3%	
		Age 18-20	female	3.8%	2.9%	1.8%	2.5%	2.8%	
			male	4.1%	2.3%	2.0%	1.5%	2.6%	
		Age 21-64	female	9.2%	9.0%	8.2%	10.5%	9.1%	
			male	7.1%	6.7%	6.6%	11.4%	7.3%	
		Age 65-74	female	3.2%	3.2%	2.0%	2.7%	2.8%	
			male	3.7%	2.5%	1.6%	3.0%	2.7%	
		Age 75+	female	2.6%	2.9%	1.3%	2.4%	2.3%	
			male	3.4%	1.2%	0.9%	0.6%	1.5%	
		<b>Clackamas</b>	Age 0-3	female	0.2%	0.3%	0.4%	0.1%	0.3%
				male	0.4%	0.3%	0.5%	0.3%	0.4%
			Age 4-12	female	3.5%	3.6%	3.9%	3.2%	3.6%
				male	4.7%	4.9%	5.2%	4.6%	4.9%
Age 13-17	female		5.0%	6.3%	5.5%	5.0%	5.4%		
	male		6.1%	5.8%	5.3%	6.6%	6.0%		
Age 18-20	female		3.2%	3.6%	3.7%	3.9%	3.5%		
	male		5.8%	6.3%	5.1%	7.3%	6.0%		
Age 21-64	female		8.0%	8.4%	8.9%	10.7%	8.8%		
	male		7.5%	8.8%	8.6%	12.8%	8.9%		
Age 65-74	female		3.2%	3.3%	3.2%	3.9%	3.4%		
	male		2.8%	2.9%	1.6%	2.2%	2.4%		
Age 75+	female		0.5%	0.9%	0.9%	0.8%	0.8%		
	male		0.0%	0.1%	0.4%	0.7%	0.3%		

*(Continued on page 4)*

<sup>1</sup> Enrollees: Eligible for OHP and enrolled in an MHO

<sup>2</sup> Fee-For-Service (FFS): Eligible for OHP and NOT enrolled with an MHO (Open-Card)

Data Source: MMIS Encounter and Enrollment Tables

\*Providence contract ended December 31, 2002.

\*\*Washington County MHO Agreement became effective January 1, 2003



**TABLE 3: Percent of <sup>1</sup>Enrollees Served in Outpatient Mental Health by Age Group and Gender by MHO – FamilyCare & GOBHI Tables**

	MHO Enrollees/ <sup>2</sup> FFS	Age Group	Gender	2002		2003		Annual Average	
				3 <sup>rd</sup> Qtr	4 <sup>th</sup> Qtr	1 <sup>st</sup> Qtr	2 <sup>nd</sup> Qtr		
<b>MHO Contractors</b>	<b>Family Care</b>	Age 0-3	female	0.4%	0.2%	0.2%	0.2%	0.3%	
			male	0.2%	0.0%	0.1%	0.1%	0.1%	
		Age 4-12	female	3.4%	0.9%	1.9%	3.2%	2.3%	
			male	3.9%	1.2%	2.4%	3.4%	2.7%	
		Age 13-17	female	2.9%	1.5%	2.6%	4.0%	2.8%	
			male	4.8%	2.1%	2.9%	3.4%	3.3%	
		Age 18-20	female	1.2%	0.3%	0.3%	1.3%	0.8%	
			male	2.6%	0.9%	3.3%	5.1%	2.6%	
		Age 21-64	female	5.9%	1.8%	3.1%	6.4%	4.0%	
			male	4.5%	1.7%	3.2%	7.4%	3.5%	
		Age 65-74	female	5.5%	1.7%	3.0%	3.2%	3.4%	
			male	3.0%	0.6%	1.2%	1.8%	1.7%	
		Age 75+	female	1.0%	0.5%	0.9%	1.4%	0.9%	
		<b>GOBHI</b>	Age 0-3	female	1.3%	1.3%	2.6%	1.2%	1.6%
				male	0.2%	0.1%	0.2%	0.1%	0.2%
			Age 4-12	female	0.2%	0.3%	0.1%	0.2%	0.2%
				male	2.5%	3.0%	3.0%	3.2%	2.9%
			Age 13-17	female	4.8%	5.2%	4.6%	5.1%	4.9%
	male			4.1%	5.4%	5.5%	6.2%	5.3%	
	Age 18-20		female	7.0%	8.1%	7.2%	7.6%	7.5%	
male			3.0%	3.6%	3.0%	2.3%	3.0%		
Age 21-64	female		3.3%	3.2%	4.0%	6.8%	4.1%		
	male		8.3%	8.7%	8.2%	11.5%	8.9%		
Age 65-74	female		6.7%	7.1%	7.1%	12.3%	7.7%		
	male		3.8%	3.2%	3.1%	3.9%	3.5%		
Age 75+	female	1.7%	2.4%	2.3%	3.4%	2.4%			
	male	1.3%	1.1%	0.8%	1.2%	1.1%			

(Continued on page 5)

<sup>1</sup> Enrollees: Eligible for OHP and enrolled in an MHO

<sup>2</sup> Fee-For-Service (FFS): Eligible for OHP and NOT enrolled with an MHO (Open-Card)

Data Source: MMIS Encounter and Enrollment Tables

\*Providence contract ended December 31, 2002.

\*\*Washington County MHO Agreement became effective January 1, 2003

**TABLE 3: Percent of <sup>1</sup>Enrollees Served in Outpatient Mental Health by Age Group and Gender by MHO – JBH & LaneCare Tables**

	MHO Enrollees/ <sup>2</sup> FFS	Age Group	Gender	2002		2003		Annual Average	
				3 <sup>rd</sup> Qtr	4 <sup>th</sup> Qtr	1 <sup>st</sup> Qtr	2 <sup>nd</sup> Qtr		
<b>MHO Contractors</b>	<b>JBH</b>	Age 0-3	female	0.3%	0.3%	0.4%	0.4%	0.4%	
			male	0.3%	0.4%	0.3%	0.4%	0.4%	
		Age 4-12	female	3.5%	3.6%	3.7%	3.5%	3.6%	
			male	4.8%	5.7%	5.6%	5.6%	5.4%	
		Age 13-17	female	5.3%	6.2%	6.3%	5.7%	5.9%	
			male	6.5%	6.7%	6.4%	5.7%	6.3%	
		Age 18-20	female	3.3%	3.4%	3.1%	2.9%	3.2%	
			male	3.7%	4.5%	4.4%	4.4%	4.2%	
		Age 21-64	female	9.2%	9.5%	8.6%	9.9%	9.3%	
			male	7.6%	8.0%	8.0%	11.7%	8.4%	
		Age 65-74	female	3.2%	3.3%	2.6%	2.5%	2.9%	
			male	1.2%	1.5%	1.8%	1.6%	1.5%	
		Age 75+	female	0.9%	0.7%	0.6%	0.8%	0.7%	
			male	0.6%	0.2%	0.2%	0.1%	0.3%	
		<b>LaneCare</b>	Age 0-3	female	0.5%	0.8%	0.8%	0.7%	0.7%
				male	0.5%	0.7%	1.0%	1.1%	0.8%
			Age 4-12	female	5.4%	6.5%	6.8%	7.5%	6.6%
				male	7.3%	9.4%	9.4%	10.0%	9.0%
Age 13-17	female		8.3%	8.5%	9.3%	10.0%	9.0%		
	male		9.7%	11.2%	12.5%	12.8%	11.6%		
Age 18-20	female		4.2%	4.5%	6.0%	7.5%	5.3%		
	male		6.0%	6.3%	6.3%	8.6%	6.6%		
Age 21-64	female		11.7%	11.8%	12.2%	15.1%	12.5%		
	male		9.1%	9.2%	10.0%	16.0%	10.3%		
Age 65-74	female		4.7%	4.1%	4.2%	4.1%	4.3%		
	male		2.3%	2.8%	3.5%	2.7%	2.8%		
Age 75+	female		2.0%	2.0%	1.3%	1.3%	1.7%		
	male		1.8%	2.3%	2.2%	2.3%	2.1%		

(Continued on page 6)

<sup>1</sup> Enrollees: Eligible for OHP and enrolled in an MHO

<sup>2</sup> Fee-For-Service (FFS): Eligible for OHP and NOT enrolled with an MHO (Open Card)

Data Source: MMIS Encounter and Enrollment Tables

\*Providence contract ended December 31, 2002.

\*\*Washington County MHO Agreement became effective January 1, 2003

**TABLE 3: Percent of <sup>1</sup>Enrollees Served in Outpatient Mental Health by Age Group and Gender by MHO – MVBCN & Providence Tables.**

			2002		2003		Annual Average		
MHO Enrollees/ <sup>2</sup> FFS	Age Group	Gender	3 <sup>rd</sup> Qtr	4 <sup>th</sup> Qtr	1 <sup>st</sup> Qtr	2 <sup>nd</sup> Qtr			
MHO Contractors	<b>MVBCN</b>	Age 0-3	female	0.3%	0.3%	0.4%	0.4%	0.4%	
			male	0.3%	0.4%	0.3%	0.4%	0.4%	
		Age 4-12	female	3.5%	3.6%	3.7%	3.5%	3.6%	
			male	4.8%	5.7%	5.6%	5.6%	5.4%	
		Age 13-17	female	5.3%	6.2%	6.3%	5.7%	5.9%	
			male	6.5%	6.7%	6.4%	5.7%	6.3%	
		Age 18-20	female	3.3%	3.4%	3.1%	2.9%	3.2%	
			male	3.7%	4.5%	4.4%	4.4%	4.2%	
		Age 21-64	female	9.2%	9.5%	8.6%	9.9%	9.3%	
			male	7.6%	8.0%	8.0%	11.7%	8.4%	
		Age 65-74	female	3.2%	3.3%	2.6%	2.5%	2.9%	
			male	1.2%	1.5%	1.8%	1.6%	1.5%	
		Age 75+	female	0.9%	0.7%	0.6%	0.8%	0.7%	
			male	0.6%	0.2%	0.2%	0.1%	0.3%	
		<b>*Providence</b>	Age 0-3	female	0.5%	0.8%	0.8%	0.7%	0.7%
				male	0.5%	0.7%	1.0%	1.1%	0.8%
			Age 4-12	female	5.4%	6.5%	6.8%	7.5%	6.6%
				male	7.3%	9.4%	9.4%	10.0%	9.0%
Age 13-17	female		8.3%	8.5%	9.3%	10.0%	9.0%		
	male		9.7%	11.2%	12.5%	12.8%	11.6%		
Age 18-20	female		4.2%	4.5%	6.0%	7.5%	5.3%		
	male		6.0%	6.3%	6.3%	8.6%	6.6%		
Age 21-64	female		11.7%	11.8%	12.2%	15.1%	12.5%		
	male		9.1%	9.2%	10.0%	16.0%	10.3%		
Age 65-74	female		4.7%	4.1%	4.2%	4.1%	4.3%		
	male		2.3%	2.8%	3.5%	2.7%	2.8%		
Age 75+	female		2.0%	2.0%	1.3%	1.3%	1.7%		
	male		1.8%	2.3%	2.2%	2.3%	2.1%		

(Continued on page 7)

<sup>1</sup> Enrollees: Eligible for OHP and enrolled in an MHO

<sup>2</sup> Fee-For-Service (FFS): Eligible for OHP and NOT enrolled with an MHO (Open Card)

Data Source: MMIS Encounter and Enrollment Tables

\*Providence contract ended December 31, 2002.

\*\*Washington County MHO Agreement became effective January 1, 2003

**TABLE 3: Percent of <sup>1</sup>Enrollees Served in Outpatient Mental Health by Age Group and Gender by MHO – Tuality & Verity Tables.**

	MHO Enrollees/ <sup>2</sup> FFS	Age Group	Gender	2002		2003		Annual Average	
				3 <sup>rd</sup> Qtr	4 <sup>th</sup> Qtr	1 <sup>st</sup> Qtr	2 <sup>nd</sup> Qtr		
<b>MHO Contractors</b>	<b>Tuality</b>	Age 0-3	female	0.0%	0.0%	0.2%	0.3%	0.1%	
			male	0.2%	0.0%	0.0%	0.1%	0.1%	
		Age 4-12	female	4.3%	0.9%	2.5%	2.9%	2.6%	
			male	3.2%	1.1%	3.4%	3.4%	2.8%	
		Age 13-17	female	6.0%	1.7%	4.3%	5.9%	4.5%	
			male	4.5%	1.9%	4.0%	3.7%	3.5%	
		Age 18-20	female	2.0%	0.9%	1.6%	2.2%	1.7%	
			male	5.6%	0.0%	3.7%	9.3%	4.4%	
		Age 21-64	female	6.0%	1.8%	5.5%	7.2%	4.9%	
			male	5.4%	2.2%	4.5%	9.7%	4.7%	
		Age 65-74	female	2.6%	0.7%	2.5%	2.4%	2.1%	
			male	2.7%	1.3%	2.7%	4.7%	2.8%	
		Age 75+	female	1.5%	0.4%	0.6%	2.0%	1.1%	
			male	0.0%	2.1%	4.5%	2.4%	2.5%	
		<b>Verity</b>	Age 0-3	female	0.4%	0.5%	0.6%	0.5%	0.5%
				male	0.5%	0.8%	0.8%	0.7%	0.7%
Age 4-12	female		4.8%	5.3%	5.1%	5.2%	5.1%		
	male		6.1%	6.5%	6.3%	7.1%	6.5%		
Age 13-17	female		6.9%	7.8%	7.8%	8.1%	7.7%		
	male		7.4%	8.4%	8.1%	8.8%	8.2%		
Age 18-20	female		3.3%	2.9%	2.8%	3.3%	3.1%		
	male		3.5%	4.0%	3.3%	2.9%	3.5%		
Age 21-64	female		10.6%	10.3%	8.8%	11.1%	10.2%		
	male		10.3%	10.4%	9.3%	13.1%	10.4%		
Age 65-74	female		4.4%	5.1%	4.5%	4.0%	4.5%		
	male		4.5%	5.5%	5.2%	4.5%	4.9%		
Age 75+	female		2.3%	2.2%	1.9%	1.6%	2.0%		
	male		1.9%	1.5%	1.6%	1.3%	1.6%		

(Continued on page 8)

<sup>1</sup> Enrollees: Eligible for OHP and enrolled in an MHO

<sup>2</sup> Fee-For-Service (FFS): Eligible for OHP and NOT enrolled with an MHO (Open Card)

Data Source: MMIS Encounter and Enrollment Tables

\*Providence contract ended December 31, 2002.

\*\*Washington County MHO Agreement became effective January 1, 2003

**TABLE 3: Percent of <sup>1</sup>Enrollees Served in Outpatient Mental Health by Age Group and Gender by MHO – Washington & FFS**

MHO Enrollees/ FFS		Age Group	Gender	2002		2003		Annual Average	
				3 <sup>rd</sup> Qtr	4 <sup>th</sup> Qtr	1 <sup>st</sup> Qtr	2 <sup>nd</sup> Qtr		
MHO Contractors	<b>**Washington</b>	Age 0-3	female	0.0%	0.0%	0.1%	0.2%	0.1%	
			male	0.0%	0.0%	0.1%	0.1%	0.1%	
		Age 4-12	female	0.0%	0.0%	2.3%	3.8%	1.5%	
			male	0.0%	0.0%	3.4%	5.4%	2.2%	
		Age 13-17	female	0.0%	0.0%	4.9%	8.1%	3.3%	
			male	0.0%	0.0%	9.6%	15.6%	6.3%	
		Age 18-20	female	0.0%	0.0%	2.7%	4.5%	1.8%	
			male	0.0%	0.0%	5.5%	8.2%	3.4%	
		Age 21-64	female	0.0%	0.0%	9.6%	14.8%	6.1%	
			male	0.0%	0.0%	14.0%	21.8%	9.0%	
		Age 65-74	female	0.0%	0.0%	3.6%	5.7%	2.3%	
			male	0.0%	0.0%	2.3%	2.7%	1.3%	
		Age 75+	female	0.0%	0.0%	1.1%	1.6%	0.7%	
			male	0.0%	0.0%	0.3%	1.0%	0.3%	
		<sup>3</sup> FFS	Age 0-3	female	2.9%	2.7%	1.7%	1.9%	2.3%
				male	3.9%	2.9%	2.4%	2.5%	2.9%
Age 4-12	female		5.7%	6.1%	5.7%	5.9%	5.9%		
	male		9.5%	10.8%	10.4%	9.5%	10.0%		
Age 13-17	female		9.6%	11.5%	10.5%	10.6%	10.6%		
	male		11.7%	13.8%	13.4%	13.1%	13.0%		
Age 18-20	female		6.6%	7.0%	3.6%	2.9%	4.4%		
	male		11.1%	12.5%	5.1%	2.9%	5.8%		
Age 21-64	female		16.3%	16.5%	7.6%	4.3%	8.7%		
	male		18.5%	19.2%	7.4%	3.8%	8.7%		
Age 65-74	female		4.5%	4.5%	3.4%	3.4%	4.0%		
	male		3.9%	3.6%	2.9%	2.7%	3.3%		
Age 75+	female		2.0%	1.9%	2.1%	2.2%	2.1%		
	male		2.0%	1.9%	1.6%	1.9%	1.9%		

(Continued on page 9)

<sup>1</sup> Enrollees: Eligible for OHP and enrolled in an MHO

<sup>3</sup> Fee-For-Service (FFS): Eligible for OHP and NOT enrolled with an MHO (Open Card)

Data Source: MMIS Encounter and Enrollment Tables

\*Providence contract ended December 31, 2002.

\*\*Washington County MHO Agreement became effective January 1, 2003

**TABLE 3: PERCENT OF <sup>1</sup>ENROLLEES SERVED IN OUTPATIENT MENTAL HEALTH BY AGE GROUP AND GENDER BY MHO – ALL <sup>2</sup>ELIGIBLES TABLES**

MHO Enrollees/ FFS	Age Group	Gender	2002		2003		Annual Average
			3 <sup>rd</sup> Qtr	4 <sup>th</sup> Qtr	1 <sup>st</sup> Qtr	2 <sup>nd</sup> Qtr	
Total All Eligibles	Age 0-3	female	0.5%	0.6%	0.5%	0.5%	0.5%
		male	0.6%	0.7%	0.5%	0.6%	0.6%
	Age 4-12	female	4.2%	4.6%	4.1%	4.7%	4.3%
		male	5.9%	6.6%	5.8%	6.7%	6.0%
	Age 13-17	female	6.6%	7.7%	7.0%	7.7%	7.0%
		male	7.8%	8.8%	7.9%	8.9%	8.1%
	Age 18-20	female	3.8%	4.0%	3.2%	3.4%	3.5%
		male	5.0%	5.4%	4.2%	4.2%	4.6%
	Age 21-64	female	10.9%	10.8%	8.2%	8.3%	9.4%
		male	10.1%	10.4%	7.9%	8.0%	9.0%
	Age 65-74	female	4.2%	4.1%	3.3%	3.6%	3.7%
		male	3.4%	3.5%	3.0%	3.2%	3.2%
	Age 75+	female	1.7%	1.6%	1.4%	1.7%	1.6%
		male	1.6%	1.4%	1.1%	1.3%	1.3%

**TABLE 4: Average Percent of <sup>1</sup>Enrollees Served Outpatient Mental Health Services by Ethnicity/Culture by MHO**

MHO/ <sup>2</sup> FFS	Culture/Ethnicity	2002		2003		Annual Average
		3 <sup>rd</sup> Qtr	4 <sup>th</sup> Qtr	1 <sup>st</sup> Qtr	2 <sup>nd</sup> Qtr	
MHO Contractors  ABHA	White	6.0%	6.1%	5.0%	5.8%	5.8%
	Hispanic	1.2%	1.4%	1.6%	1.2%	1.4%
	Black	4.5%	5.3%	5.1%	4.3%	4.9%
	Asian/pacific isl	2.2%	2.2%	2.2%	1.0%	2.0%
	Native American/ Alaskan	2.8%	2.9%	3.3%	3.4%	3.1%
	Other	3.0%	3.8%	2.2%	1.8%	2.7%

*(Continued on page 10)*

<sup>1</sup> Enrollees: Eligible for OHP and enrolled in an MHO

<sup>2</sup> Eligibles: Both Enrolled and FFS

<sup>1</sup> Enrollees: Eligible of OHP and enrolled in an MHO

<sup>2</sup> Fee-For-Service (FFS): Eligible for OHP and NOT enrolled with an MHO (Open Card)

**TABLE 4: AVERAGE PERCENT OF <sup>1</sup>ENROLLEES SERVED OUTPATIENT MENTAL HEALTH SERVICES BY ETHNICITY/CULTURE BY MHO**

		2002		2003		Annual Average	
MHO/ <sup>2</sup> FFS	Culture/Ethnicity	3 <sup>rd</sup> Qtr	4 <sup>th</sup> Qtr	1 <sup>st</sup> Qtr	2 <sup>nd</sup> Qtr		
MHO Contractors	Clackamas	White	5.7%	6.1%	6.0%	6.1%	5.9%
		Hispanic	0.9%	0.9%	0.9%	0.9%	0.9%
		Black	5.2%	5.8%	6.5%	4.4%	5.5%
		Asian/pacific isl	3.3%	3.4%	2.2%	3.4%	3.1%
		Native American/ Alaskan	4.0%	5.1%	5.0%	4.8%	4.7%
		Other	2.2%	4.6%	5.1%	1.7%	3.5%
	Family Care	White	4.1%	1.4%	2.3%	3.8%	2.8%
		Hispanic	2.2%	0.3%	0.6%	1.4%	1.1%
		Black	3.7%	1.2%	2.5%	3.4%	2.6%
		Asian/pacific isl	3.2%	0.9%	2.5%	4.1%	2.6%
		Native American/ Alaskan	6.0%	3.5%	4.9%	4.7%	4.7%
		Other	1.9%	0.6%	0.0%	0.0%	0.7%
	GOBHI	White	5.6%	6.0%	5.5%	6.5%	5.9%
		Hispanic	1.3%	1.4%	1.4%	1.7%	1.5%
		Black	3.9%	4.3%	5.8%	7.4%	5.2%
		Asian/pacific isl	1.8%	4.7%	3.4%	6.9%	4.0%
		Native American/ Alaskan	4.6%	5.3%	3.5%	4.1%	4.4%
		Other	3.9%	4.4%	2.9%	1.4%	3.3%
	JBH	White	5.9%	6.2%	5.7%	5.8%	5.9%
		Hispanic	2.0%	2.2%	2.2%	1.9%	2.1%
		Black	5.7%	6.2%	6.0%	6.7%	6.1%
		Asian/pacific isl	4.6%	5.3%	4.5%	4.3%	4.7%
		Native American/ Alaskan	5.9%	6.4%	5.8%	5.1%	5.9%
		Other	3.6%	3.5%	3.1%	3.5%	3.4%

(Continued on page 11)

<sup>1</sup> Enrollees: Eligible of OHP and enrolled in an MHO

<sup>2</sup> Fee-For-Service (FFS): Eligible for OHP and NOT enrolled with an MHO (Open Card)

Data Source: MMIS Encounter and Enrollment Tables

\*Providence contract ended December 31, 2002.

\*\*Washington County MHO Agreement became effective January 1, 2003

**TABLE 4: AVERAGE PERCENT OF <sup>1</sup>ENROLLEES SERVED OUTPATIENT MENTAL HEALTH SERVICES BY ETHNICITY/CULTURE BY MHO**

	MHO/ <sup>2</sup> FFS	Culture/Ethnicity	2002		2003		Annual Average
			3 <sup>rd</sup> Qtr	4 <sup>th</sup> Qtr	1 <sup>st</sup> Qtr	2 <sup>nd</sup> Qtr	
MHO Contractors	Lane Care	White	8.1%	8.6%	8.9%	10.1%	8.8%
		Hispanic	1.9%	2.3%	2.4%	2.7%	2.3%
		Black	7.4%	7.5%	7.5%	7.9%	7.6%
		Asian/pacific isl	3.5%	3.4%	3.9%	4.4%	3.8%
		Native American/ Alaskan	7.8%	7.6%	8.9%	10.4%	8.6%
		Other	2.1%	3.9%	6.5%	7.3%	4.8%
	MVBCN	White	7.8%	8.3%	5.9%	8.7%	7.7%
		Hispanic	1.6%	1.9%	1.3%	1.7%	1.6%
		Black	7.6%	8.1%	5.7%	6.9%	7.1%
		Asian/pacific isl	3.7%	4.4%	2.9%	4.3%	3.8%
		Native American/ Alaskan	11.0%	11.7%	8.0%	11.4%	10.5%
		Other	3.8%	4.0%	2.3%	3.2%	3.4%
	*Providence	White	7.6%	8.3%	2.6%	0.0%	4.6%
		Hispanic	1.3%	1.1%	0.3%	0.0%	0.7%
		Black	4.9%	5.5%	1.6%	0.0%	3.0%
		Asian/pacific isl	4.9%	4.4%	0.6%	0.0%	2.5%
		Native American/ Alaskan	7.6%	8.6%	3.2%	0.0%	4.8%
		Other	4.7%	5.4%	1.0%	0.0%	2.8%
	Tuality	White	5.2%	1.6%	4.1%	4.8%	3.9%
		Hispanic	0.7%	0.3%	0.7%	0.9%	0.6%
		Black	4.5%	1.1%	4.9%	6.4%	4.2%
		Asian/pacific isl	4.6%	0.7%	3.5%	3.5%	3.1%
		Native American/ Alaskan	0.0	0.0	0.0	0.0	0.0
		Other	2.4%	0.0%	0.0%	0.0%	0.6%

(Continued on page 11)

<sup>1</sup> Enrollees: Eligible of OHP and enrolled in an MHO

<sup>2</sup> Fee-For-Service (FFS): Eligible for OHP and NOT enrolled with an MHO (Open Card)

Data Source: MMIS Encounter and Enrollment Tables

\*Providence contract ended December 31, 2002.

\*\*Washington County MHO Agreement became effective January 1, 2003



**TABLE 4: Average Percent of <sup>1</sup>Enrollees Served Outpatient Mental Health Services by Ethnicity/Culture**

		2002		2003		Annual Average	
MHO/ <sup>2</sup> FFS	Culture/Ethnicity	3 <sup>rd</sup> Qtr	4 <sup>th</sup> Qtr	1 <sup>st</sup> Qtr	2 <sup>nd</sup> Qtr		
MHO Contractors	Verity	White	8.1%	8.0%	7.0%	7.7%	7.7%
		Hispanic	1.7%	1.8%	1.5%	1.3%	1.6%
		Black	6.4%	6.6%	5.5%	6.0%	6.2%
		Asian/pacific isl	5.8%	7.6%	7.8%	8.5%	7.4%
		Native American/ Alaskan	7.1%	9.2%	9.0%	10.0%	8.7%
		Other	4.4%	4.3%	4.2%	4.2%	4.3%
	**Washington	White	0.0%	0.0%	6.1%	9.8%	4.0%
		Hispanic	0.0%	0.0%	0.7%	1.3%	0.5%
		Black	0.0%	0.0%	3.8%	7.2%	2.7%
		Asian/pacific isl	0.0%	0.0%	3.0%	4.4%	1.9%
		Native American/ Alaskan	0.0%	0.0%	9.3%	12.1%	5.3%
		Other	0.0%	0.0%	3.3%	4.3%	1.9%
FFS	White	14.2%	15.9%	16.2%	8.7%	5.5%	
	Hispanic	1.0%	1.2%	1.3%	1.0%	0.9%	
	Black	15.0%	16.7%	15.9%	7.7%	5.4%	
	Asian/pacific isl	5.3%	6.3%	5.9%	3.2%	2.3%	
	Native American/ Alaskan	9.1%	13.1%	13.4%	10.7%	7.1%	
	Other	6.4%	8.3%	8.4%	5.0%	2.5%	
All <sup>3</sup> Eligibles	White	7.7%	7.8%	8.1%	6.5%	6.8%	
	Hispanic	1.3%	1.4%	1.5%	1.2%	1.3%	
	Black	7.3%	7.0%	6.9%	5.5%	6.0%	
	Asian/pacific isl	6.4%	5.2%	5.9%	4.7%	5.3%	
	Native American/ Alaskan	7.2%	8.2%	9.1%	7.9%	7.2%	
	Other	3.6%	4.2%	4.6%	3.6%	3.3%	

<sup>1</sup> Enrollees: Eligible for OHP and enrolled in an MHO

<sup>2</sup> Fee-For-Service (FFS): Eligible for OHP and NOT enrolled with an MHO (Open Card)

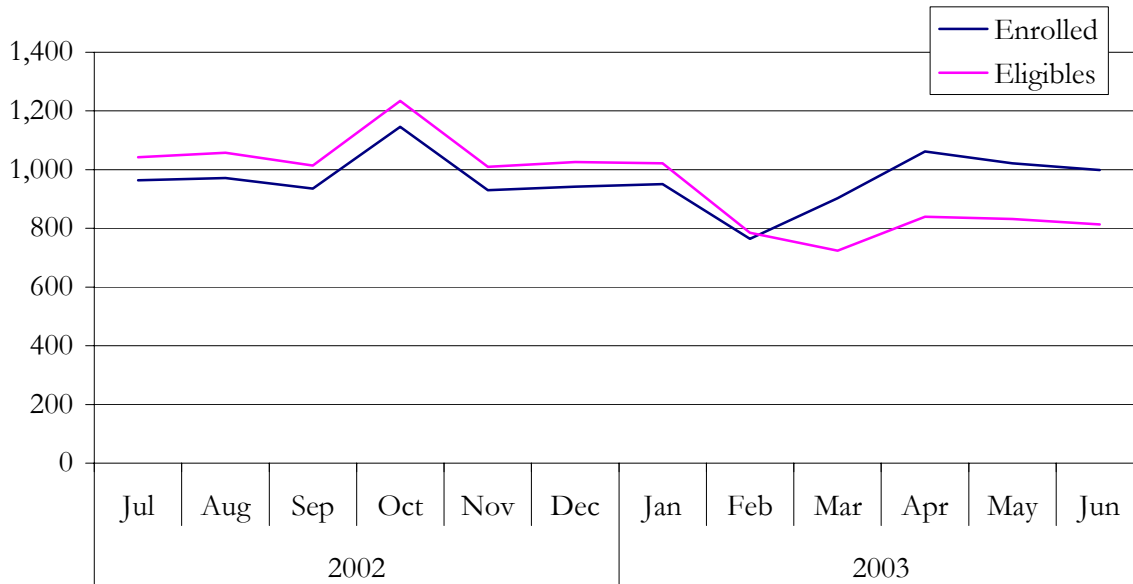
<sup>3</sup> Eligibles: Both Enrolled and FFS

Data Source: MMIS Encounter and Enrollment Tables

\*Providence contract ended December 31, 2002.

\*\*Washington County MHO Agreement became effective January 1, 2003

**FIGURE 3: Statewide Average Outpatient Services per 1,000 by <sup>1</sup>Enrollees & All <sup>2</sup>Eligibles**



**TABLE 5: Average Outpatient Units of Service per 1,000**

		2002		2003		Annual Average
MHO Enrollees/ <sup>3</sup> FFS		3 <sup>rd</sup> Qtr	4 <sup>th</sup> Qtr	1 <sup>st</sup> Qtr	2 <sup>nd</sup> Qtr	
MHO Contractors	ABHA	805.2	831.7	788.9	1,012.1	850.4
	Clackamas	512.9	628.1	591.2	645.9	591.2
	Family Care	839.0	292.0	432.9	669.9	550.2
	GOBHI	700.8	723.8	728.9	1,234.3	827.6
	JBH	803.4	747.6	635.9	710.7	727.5
	Lane Care	1,163.0	1,188.2	1,208.5	1,457.0	1,241.5
	MVBCN	715.2	776.1	496.7	824.4	700.3
	*Providence	831.0	892.6	862.8	0.0	862.0
	Tuality	339.1	139.1	283.7	276.3	270.5
	Verity	1,589.2	1,796.7	1,481.3	1,423.3	1,583.5
	**Washington	0.0	0.0	1,008.0	1,045.8	1,029.8
FFS		1,542.0	1,612.6	742.5	378.4	903.9
<b>Total All Eligibles</b>		1,038.0	1,090.5	847.2	828.2	951.6

<sup>1</sup> Enrollees: Eligible for OHP and enrolled in an MHO

<sup>2</sup> Eligibles: Both Enrolled and FFS

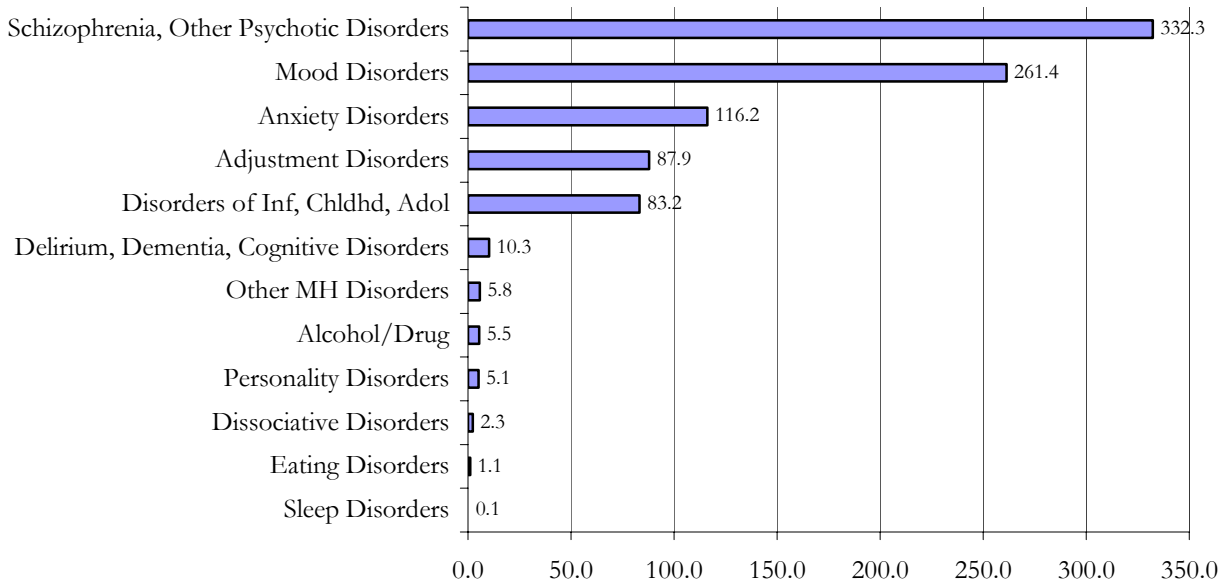
<sup>3</sup> Fee-For-Service (FFS): Eligible for OHP and NOT enrolled with an MHO (Open-Card)

Data Source: MMIS Encounter and Enrollment Tables

\*Providence contract ended December 31, 2002.

\*\*Washington County MHO Agreement became effective January 1, 2003

**FIGURE 4: Annual Average Outpatient Units of Service per 1,000 in Diagnostic Group**



Note: Units of service per 1,000 is calculated by dividing the total units of service and dividing it by every 1,000 members of a group.

**TABLE 6: Monthly Average Outpatient Units of Service per 1,000 in Diagnostic Group by MHO - ABHA**

	Diagnostic Group	2002		2003		Annual Average	
		3 <sup>rd</sup> Qtr	4 <sup>th</sup> Qtr	1 <sup>st</sup> Qtr	2 <sup>nd</sup> Qtr		
MHO Contractors	ABHA	Schizophrenia, Other Psychotic Disorders	222.0	249.0	291.9	396.0	282.5
		Mood Disorders	269.0	254.9	196.4	261.1	245.2
		Disorders of Inf, Chldhd, Adol	51.9	63.3	44.9	53.8	53.6
		Adjustment Disorders	123.5	121.8	97.6	129.4	117.7
		Personality Disorders	2.6	5.7	9.8	14.5	7.7
		Anxiety Disorders	121.4	121.3	129.8	136.1	126.5
		Delirium, Dementia, Cognitive Disorders	2.4	2.9	1.1	2.2	2.2
		Dissociative Disorders	4.8	5.5	12.0	16.9	9.3
		Alcohol/Drug	1.3	1.5	1.0	0.1	1.0
		Eating Disorders	2.8	2.6	0.0	0.3	1.5
		Other MH Disorders	3.5	3.1	4.2	1.5	3.2

(Continued on page 15)

Data Source: MMIS Encounter and Enrollment Tables

\*Providence contract ended December 31, 2002.

\*\*Washington County MHO Agreement became effective January 1, 2003

**TABLE 6: Monthly Average Outpatient Units of Service per 1,000 in Diagnostic Group by MHO – Clackamas & FamilyCare**

		2002		2003		Annual Average	
		3rd Qtr	4th Qtr	1st Qtr	2 <sup>nd</sup> Qtr		
<b>MHO Contractors</b>	<b>Clackamas</b>	Schizophrenia, Other Psychotic Disorders	130.2	175.6	177.4	253.2	180.2
		Mood Disorders	142.9	179.9	169.8	161.0	163.3
		Disorders of Inf, Chldhd, Adol	72.4	80.6	66.8	67.0	72.0
		Adjustment Disorders	63.5	68.3	66.0	65.9	65.9
		Personality Disorders	8.1	7.1	4.9	6.7	6.7
		Anxiety Disorders	68.0	78.1	70.5	64.4	70.5
		Delirium, Dementia, Cognitive Disorders	5.0	7.6	8.6	9.6	7.6
		Dissociative Disorders	0.7	1.1	0.7	0.0	0.7
		Alcohol/Drug	11.4	18.2	15.4	10.7	14.1
		Eating Disorders	0.8	2.0	0.1	0.1	0.8
		Sleep Disorders	0.0	0.0	0.0	0.1	0.0
		Other MH Disorders	8.5	7.2	8.9	5.6	7.6
	<b>FamilyCare</b>	Schizophrenia, Other Psychotic Disorders	130.2	175.6	177.4	253.2	180.2
		Mood Disorders	142.9	179.9	169.8	161.0	163.3
		Disorders of Inf, Chldhd, Adol	72.4	80.6	66.8	67.0	72.0
		Adjustment Disorders	63.5	68.3	66.0	65.9	65.9
		Personality Disorders	8.1	7.1	4.9	6.7	6.7
		Anxiety Disorders	68.0	78.1	70.5	64.4	70.5
		Delirium, Dementia, Cognitive Disorders	5.0	7.6	8.6	9.6	7.6
		Dissociative Disorders	0.7	1.1	0.7	0.0	0.7
		Alcohol/Drug	11.4	18.2	15.4	10.7	14.1
		Sleep Disorders	0.8	2.0	0.1	0.1	0.8
		Other MH Disorders	0.0	0.0	0.0	0.1	0.0

*(Continued on page 16)*

Data Source: MMIS Encounter and Enrollment Tables

\*Providence contract ended December 31, 2002.

\*\*Washington County MHO Agreement became effective January 1, 2003

**TABLE 6: Monthly Average Outpatient Units of Service per 1,000 in Diagnostic Group by MHO – GOBHI & JBH**

		2002		2003		Annual Average	
		3 <sup>rd</sup> Qtr	4 <sup>th</sup> Qtr	1 <sup>st</sup> Qtr	2 <sup>nd</sup> Qtr		
<b>MHO Contractors</b>	<b>GOBHI</b>	Schizophrenia, Other Psychotic Disorders	293.6	284.1	316.6	697.1	382.8
		Mood Disorders	186.0	191.0	170.2	215.0	189.5
		Disorders of Inf, Chldhd, Adol	54.4	69.1	74.9	115.9	76.6
		Adjustment Disorders	52.4	63.8	55.3	63.6	58.5
		Personality Disorders	2.3	1.1	1.2	0.8	1.4
		Anxiety Disorders	82.8	83.1	85.3	112.5	89.8
		Delirium, Dementia, Cognitive Disorders	10.7	10.2	9.1	7.1	9.4
		Dissociative Disorders	3.5	4.0	2.6	7.9	4.4
		Alcohol/Drug	5.7	6.7	3.4	4.3	5.1
		Eating Disorders	0.6	0.2	0.2	0.1	0.3
		Other MH Disorders	8.1	10.2	9.6	9.3	9.3
	<b>JBH</b>	Schizophrenia, Other Psychotic Disorders	285.6	214.3	174.7	232.2	227.7
		Mood Disorders	240.2	234.9	190.7	181.3	214.4
		Disorders of Inf, Chldhd, Adol	51.0	65.3	59.3	66.9	60.2
		Adjustment Disorders	89.3	92.0	92.6	104.6	94.0
		Personality Disorders	5.1	5.4	5.3	5.5	5.3
		Anxiety Disorders	116.9	120.7	102.8	104.4	111.8
		Delirium, Dementia, Cognitive Disorders	2.3	3.1	2.0	4.1	2.8
		Dissociative Disorders	3.0	3.1	2.2	3.1	2.9
		Alcohol/Drug	3.4	1.4	1.1	0.9	1.8
		Eating Disorders	1.7	1.9	1.3	1.7	1.6
		Other MH Disorders	4.9	5.6	3.9	5.9	5.0

*(Continued on page 17)*

Data Source: MMIS Encounter and Enrollment Tables

\*Providence contract ended December 31, 2002.

\*\*Washington County MHO Agreement became effective January 1, 2003

**TABLE 6: Monthly Average Outpatient Units of Service per 1,000 in Diagnostic Group by MHO – LaneCare & MVBCN**

		Diagnostic Group	2002		2003		Annual Average
			3 <sup>rd</sup> Qtr	4 <sup>th</sup> Qtr	1st Qtr	2 <sup>nd</sup> Qtr	
<b>MHO Contractors</b>	<b>Lane Care</b>	Schizophrenia, Other Psychotic Disorders	308.3	313.2	308.7	390.5	326.6
		Mood Disorders	370.4	363.1	362.0	401.4	372.7
		Disorders of Inf, Chldhd, Adol	115.9	129.6	137.3	180.7	138.3
		Adjustment Disorders	151.2	166.5	179.1	226.0	177.7
		Personality Disorders	4.3	4.1	4.7	4.4	4.3
		Anxiety Disorders	194.9	196.4	204.3	242.0	207.3
		Delirium, Dementia, Cognitive Disorders	2.0	0.7	1.2	1.0	1.2
		Dissociative Disorders	1.3	2.0	2.9	4.6	2.6
		Alcohol/Drug	3.8	2.0	1.5	1.3	2.2
		Eating Disorders	3.1	1.0	1.2	0.5	1.5
		Sleep Disorders	0.0	0.3	0.0	0.0	0.1
		Other MH Disorders	6.9	7.6	4.2	3.3	5.7
	<b>MVBCN</b>	Schizophrenia, Other Psychotic Disorders	208.0	202.9	130.2	236.7	193.4
		Mood Disorders	214.9	220.1	127.6	202.2	191.7
		Disorders of Inf, Chldhd, Adol	66.5	82.2	67.1	103.0	78.7
		Adjustment Disorders	96.6	119.0	78.0	123.3	103.7
		Personality Disorders	7.7	9.5	5.9	19.6	10.3
		Anxiety Disorders	104.4	123.2	70.9	107.9	101.7
		Delirium, Dementia, Cognitive Disorders	4.4	3.9	9.6	22.5	9.5
		Dissociative Disorders	2.5	2.2	1.9	3.3	2.4
		Alcohol/Drug	4.3	4.7	2.1	2.4	3.4
		Eating Disorders	0.4	0.9	0.9	0.8	0.8
		Sleep Disorders	0.0	0.1	0.0	0.0	0.0
		Other MH Disorders	3.3	5.6	1.8	2.1	3.3

*(Continued on page 17)*

Data Source: MMIS Encounter and Enrollment Tables

\*Providence contract ended December 31, 2002.

\*\*Washington County MHO Agreement became effective January 1, 2003

**TABLE 6: Monthly Average Outpatient Units of Service per 1,000 in the Diagnostic Group by MHO – Providence & Tuality**

		Diagnostic Group	2002		2003		Annual Average
			3 <sup>rd</sup> Qtr	4 <sup>th</sup> Qtr	1 <sup>st</sup> Qtr	2 <sup>nd</sup> Qtr	
<b>MHO Contractors</b>	<b>*Providence</b>	Schizophrenia, Other Psychotic Disorders	306.2	331.5	105.3	0.0	185.8
		Mood Disorders	272.3	290.4	93.0	0.0	164.0
		Disorders of Inf, Chldhd, Adol	67.8	81.9	27.9	0.0	44.4
		Adjustment Disorders	59.6	66.6	24.1	0.0	37.6
		Personality Disorders	0.9	2.9	0.4	0.0	1.0
		Anxiety Disorders	107.3	99.8	25.4	0.0	58.1
		Delirium, Dementia, Cognitive Disorders	8.0	10.7	9.5	0.0	7.1
		Dissociative Disorders	0.9	0.0	0.0	0.0	0.2
		Alcohol/Drug	3.4	2.8	0.6	0.0	1.7
		Eating Disorders	0.2	0.2	0.1	0.0	0.1
		Sleep Disorders	0.5	0.8	0.0	0.0	0.3
	Other MH Disorders	4.0	4.1	1.2	0.0	2.3	
	<b>Tuality</b>	Schizophrenia, Other Psychotic Disorders	56.5	19.4	58.8	48.3	45.8
		Mood Disorders	99.1	30.5	86.0	80.0	73.9
		Disorders of Inf, Chldhd, Adol	38.9	13.0	35.3	50.7	34.2
		Adjustment Disorders	44.8	10.5	31.8	35.8	30.7
		Personality Disorders	2.9	0.3	3.6	1.1	2.0
		Anxiety Disorders	81.8	17.7	51.0	53.0	51.0
		Delirium, Dementia, Cognitive Disorders	0.1	0.1	13.4	0.3	3.6
		Dissociative Disorders	0.3	0.0	0.0	0.0	0.1
Alcohol/Drug		8.4	0.2	2.2	4.6	3.9	
Other MH Disorders	6.2	1.0	1.6	2.4	2.8		

*(Continued on page 19)*

Data Source: MMIS Encounter and Enrollment Tables

\*Providence contract ended December 31, 2002.

\*\*Washington County MHO Agreement became effective January 1, 2003

**TABLE 6: Monthly Average Outpatient Units of Service per 1,000 in the Diagnostic Group by MHO – Verity & Washington**

		2002		2003		Annual Average	
		3 <sup>rd</sup> Qtr	4 <sup>th</sup> Qtr	1 <sup>st</sup> Qtr	2 <sup>nd</sup> Qtr		
<b>MHO Contractors</b>	<b>Verity</b>	Schizophrenia, Other Psychotic Disorders	613.2	789.9	630.8	548.5	651.7
		Mood Disorders	494.1	508.0	411.7	382.4	454.0
		Disorders of Inf, Chldhd, Adol	127.2	136.6	122.2	143.4	131.8
		Adjustment Disorders	103.7	105.1	103.3	114.3	106.2
		Personality Disorders	4.4	5.4	4.6	6.0	5.1
		Anxiety Disorders	190.2	194.4	168.9	193.4	186.7
		Delirium, Dementia, Cognitive Disorders	23.9	29.0	16.3	14.3	21.4
		Dissociative Disorders	1.0	1.1	1.0	1.3	1.1
		Alcohol/Drug	12.6	9.3	10.9	9.3	10.6
		Eating Disorders	2.5	1.9	0.5	0.2	1.4
		Sleep Disorders	0.0	0.1	0.0	0.0	0.1
		Other MH Disorders	15.7	15.3	10.3	9.7	13.0
	<b>Washington</b>	Schizophrenia, Other Psychotic Disorders	0.0	0.0	267.5	436.3	175.6
		Mood Disorders	0.0	0.0	179.5	282.5	115.4
		Disorders of Inf, Chldhd, Adol	0.0	0.0	90.0	112.2	50.8
		Adjustment Disorders	0.0	0.0	48.0	78.1	31.5
		Personality Disorders	0.0	0.0	1.5	3.4	1.2
		Anxiety Disorders	0.0	0.0	62.6	107.0	42.3
		Delirium, Dementia, Cognitive Disorders	0.0	0.0	21.5	23.0	11.2
		Alcohol/Drug	0.0	0.0	0.3	0.7	0.2
		Eating Disorders	0.0	0.0	0.2	0.1	0.1
		Other MH Disorders	0.0	0.0	0.9	1.9	0.7

Data Source: MMIS Encounter and Enrollment Tables

\*Providence contract ended December 31, 2002.

\*\*Washington County MHO Agreement became effective January 1, 2003



**TABLE 6: MONTHLY AVERAGE OUTPATIENT UNITS OF SERVICE PER 1,000 IN THE DIAGNOSTIC GROUP BY MHO – FFS & ALL ELIGIBLES**

	Diagnostic Group	2002		2003		Annual Average
		3 <sup>rd</sup> Qtr	4 <sup>th</sup> Qtr	1 <sup>st</sup> Qtr	2 <sup>nd</sup> Qtr	
<b><sup>1</sup>FFS</b>	Schizophrenia, Other Psychotic Disorders	687.7	698.7	296.4	136.9	378.3
	Mood Disorders	479.5	496.9	209.9	87.8	263.5
	Disorders of Inf, Chldhd, Adol	84.1	120.0	79.0	49.8	76.2
	Adjustment Disorders	82.2	88.1	52.7	34.3	57.4
	Personality Disorders	7.1	6.6	2.6	1.1	3.5
	Anxiety Disorders	143.8	142.2	75.7	43.3	87.6
	Delirium, Dementia, Cognitive Disorders	26.7	33.5	11.0	6.6	16.2
	Dissociative Disorders	3.7	3.1	0.8	0.4	1.6
	Alcohol/Drug	8.7	9.8	6.2	3.0	6.1
	Eating Disorders	3.7	1.3	1.5	0.2	1.4
	Sleep Disorders	0.2	0.2	0.1	0.1	0.1
	Other MH Disorders	7.1	4.7	1.7	1.3	3.1
<b>All <sup>1</sup>Eligibles</b>	Schizophrenia, Other Psychotic Disorders	376.2	400.5	290.0	302.9	332.3
	Mood Disorders	320.5	323.0	225.2	207.0	261.4
	Disorders of Inf, Chldhd, Adol	79.6	94.5	79.7	89.4	83.2
	Adjustment Disorders	92.8	99.1	80.8	89.7	87.9
	Personality Disorders	5.1	5.6	4.2	6.1	5.1
	Anxiety Disorders	132.5	135.0	103.6	107.9	116.2
	Delirium, Dementia, Cognitive Disorders	10.9	13.0	9.0	9.5	10.3
	Dissociative Disorders	2.3	2.3	2.0	2.8	2.3
	Alcohol/Drug	7.1	6.2	5.1	4.0	5.5
	Eating Disorders	1.9	1.4	0.8	0.5	1.1
	Sleep Disorders	0.1	0.1	0.0	0.0	0.1
	Other MH Disorders	7.4	7.5	4.6	4.2	5.8

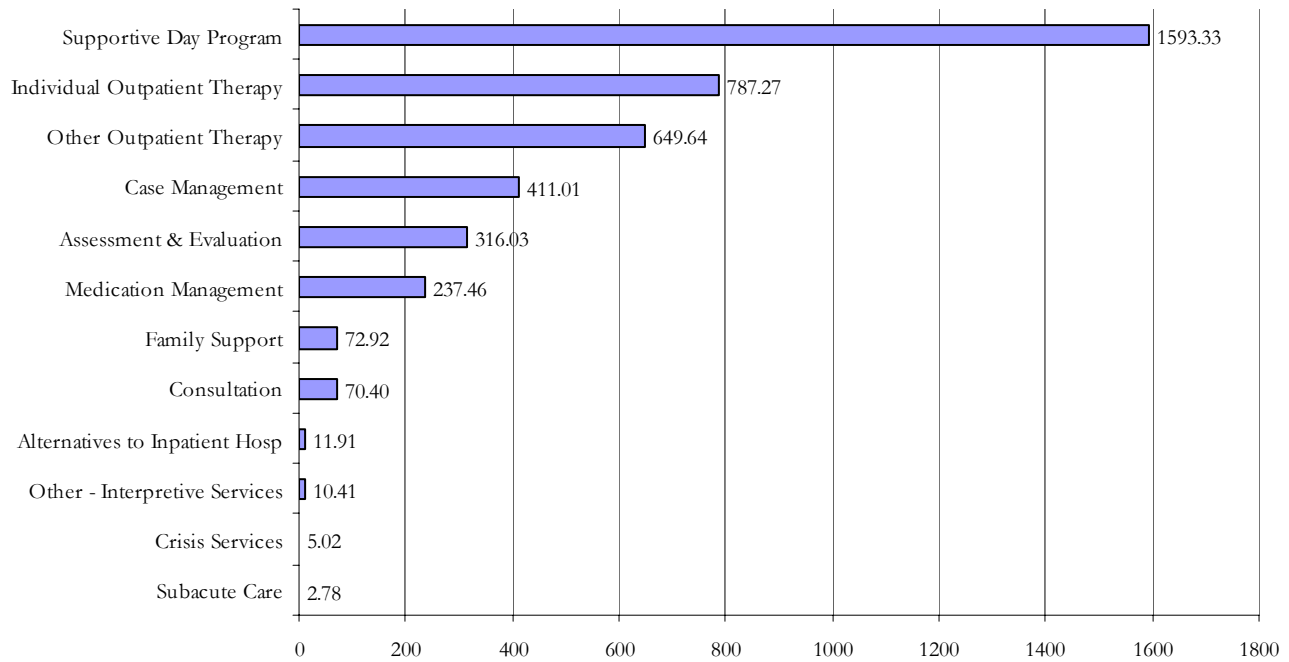
<sup>1</sup> Fee-For-Service (FFS): Eligible for OHP and NOT enrolled with an MHO (Open-Card)<sup>1</sup> Eligibles: Both Enrolled and FFS

Data Source: MMIS Encounter and Enrollment Tables

\*Providence contract ended December 31, 2002.

\*\*Washington County MHO Agreement became effective January 1, 2003

**FIGURE 5: Annual Average Outpatient Units of Service per 1,000 by Service Categories**



Note: Units of service per 1,000 is calculated by dividing the total units of service and dividing it by every 1,000 members of a group.

**TABLE 7: Monthly Average Outpatient Units of Service per 1,000 by Service Categories - ABHA**

ABHA	Service Category	Age Group	2002		2003		Annual Average
			3 <sup>rd</sup> Qtr	4 <sup>th</sup> Qtr	1 <sup>st</sup> Qtr	2 <sup>nd</sup> Qtr	
Assessment & Evaluation	Age 0-3	4.8	3.5	2.9	4.2	3.9	
	Age 4-12	50.6	60.5	40.9	53.7	51.4	
	Age 13-17	73.2	109.2	58.3	57.6	74.3	
	Age 18-20	40.3	33.7	29.6	27.1	33.4	
	Age 21-64	60.2	55.3	32.7	42.7	49.2	
	Age 65-74	37.5	34.1	17.1	18.0	26.7	
	Age 75+	18.1	37.3	14.7	25.9	24.0	

(Continued on page 22)

Data Source: MMIS Encounter and Enrollment Tables

\*Providence contract ended December 31, 2002.

\*\*Washington County MHO Agreement became effective January 1, 2003

**TABLE 7: MONTHLY AVERAGE OUTPATIENT UNITS OF SERVICE PER 1,000 BY SERVICE CATEGORIES – ABHA (continued)**

ABHA		2002		2003		Annual Average
Service Category	Age Group	3 <sup>rd</sup> Qtr	4 <sup>th</sup> Qtr	1 <sup>st</sup> Qtr	2 <sup>nd</sup> Qtr	
Individual Outpatient Therapy	Age 0-3	9.7	6.6	4.4	1.5	5.6
	Age 4-12	184.1	223.3	151.0	143.7	175.2
	Age 13-17	240.1	321.8	252.3	220.6	258.5
	Age 18-20	139.8	86.9	84.5	81.7	100.9
	Age 21-64	346.0	324.1	267.6	356.5	321.1
	Age 65-74	99.3	64.1	61.7	123.1	86.7
	Age 75+	61.0	52.4	22.1	39.2	44.0
Other Outpatient Therapy	Age 0-3	11.0	8.0	2.5	3.7	6.3
	Age 4-12	104.4	109.9	92.4	156.3	115.8
	Age 13-17	105.2	130.0	146.5	123.5	126.6
	Age 18-20	63.5	50.5	29.9	43.4	47.9
	Age 21-64	174.0	172.1	170.4	249.5	183.4
	Age 65-74	16.4	0.0	6.2	10.1	8.1
	Age 75+	0.0	0.3	1.1	0.0	0.4
Case Management	Age 0-3	2.1	2.3	1.7	2.0	2.0
	Age 4-12	32.2	53.8	29.0	30.2	36.2
	Age 13-17	37.8	44.2	27.4	18.6	31.9
	Age 18-20	69.2	22.3	16.3	12.6	32.8
	Age 21-64	144.3	138.9	129.8	194.8	146.3
	Age 65-74	98.2	48.8	50.3	68.4	66.2
	Age 75+	39.6	54.1	18.2	45.5	39.4
Supportive Day	Age 4-12	39.7	31.6	28.0	39.6	34.7
	Age 13-17	16.0	19.4	11.4	3.4	12.5
	Age 18-20	154.2	24.1	53.6	9.3	67.1
	Age 21-64	528.6	494.4	472.6	1323.0	618.7
	Age 65-74	761.4	653.1	376.9	662.6	612.7
	Age 75+	64.1	85.6	85.8	25.5	66.0

(Continued on page 23)

Data Source: MMIS Encounter and Enrollment Tables

\*Providence contract ended December 31, 2002.

\*\*Washington County MHO Agreement became effective January 1, 2003

**TABLE 7: MONTHLY AVERAGE OUTPATIENT UNITS OF SERVICE PER 1,000 BY SERVICE CATEGORIES – ABHA (continued)**

ABHA		2002		2003		Annual Average
Service Category	Age Group	3 <sup>rd</sup> Qtr	4 <sup>th</sup> Qtr	1 <sup>st</sup> Qtr	2 <sup>nd</sup> Qtr	
Crisis Services	Age 4-12	1.6	1.0	1.7	0.1	1.1
	Age 13-17	5.3	0.8	4.6	6.6	4.4
	Age 18-20	8.8	8.4	2.0		5.4
	Age 21-64	11.9	8.7	6.0	5.9	8.6
	Age 75+	8.0	0.0	0.0	3.0	2.8
Medication Management	Age 4-12	0.7	0.6	0.2	0.8	0.6
	Age 13-17	9.8	8.9	8.9	10.4	9.5
	Age 18-20	15.6	18.2	12.2	16.6	15.6
	Age 21-64	28.6	11.1	15.3	16.8	18.3
	Age 65-74	90.9	199.2	457.5	575.5	285.8
	Age 75+	20.1	9.2	20.7	43.5	23.2
Consultation	Age 0-3	0.6	0.8	0.8	0.6	0.7
	Age 4-12	9.0	12.0	12.1	16.6	12.4
	Age 13-17	10.1	18.8	17.0	25.9	18.0
	Age 18-20	6.2	4.5	0.7	1.9	3.6
	Age 21-64	5.7	6.1	3.8	9.4	5.9
	Age 65-74	0.0	0.0	0.0	0.5	0.1
	Age 75+	1.3	0.0	0.4	1.1	0.7
Family Support	Age 4-12	7.9	6.6	0.0	0.0	3.6
	Age 13-17	0.0	0.0	1.9	2.5	1.1
Other - Interpretive Services	Age 13-17	0.0	0.0	1.6	0.0	0.4
	Age 21-64	0.0	0.1	0.1	0.5	0.1
Alternatives to Inpatient Hospital	Age 4-12	0.5	1.4	2.3	0.0	1.1
	Age 13-17	4.8	0.0	1.3	2.1	2.0
	Age 18-20	0.0	0.3	0.7	0.0	0.3
	Age 21-64	3.7	2.4	3.5	4.4	3.4
	Age 65-74	0.0	0.0	8.3	0.0	2.1

Data Source: MMIS Encounter and Enrollment Tables

\*Providence contract ended December 31, 2002.

\*\*Washington County MHO Agreement became effective January 1, 2003

**TABLE 7: Monthly Average Outpatient Units of Service per 1,000 by Service Categories - Clackamas MHO**

Clackamas MHO		2002		2003		Annual Average
Service Category	Age Group	3 <sup>rd</sup> Qtr	4 <sup>th</sup> Qtr	1 <sup>st</sup> Qtr	2 <sup>nd</sup> Qtr	
Assessment & Evaluation	Age 0-3	8.6	5.7	6.1	3.3	6.0
	Age 4-12	46.1	53.8	44.5	57.2	50.4
	Age 13-17	63.4	83.3	81.1	88.6	79.1
	Age 18-20	51.8	41.1	51.1	67.6	51.9
	Age 21-64	62.5	65.7	63.8	67.7	64.6
	Age 65-74	5.6	12.4	10.2	14.7	10.7
	Age 75+	4.8	9.4	16.2	23.8	13.4
Individual Outpatient Therapy	Age 0-3	0.7	1.0	1.7	0.2	0.9
	Age 4-12	59.9	79.4	73.9	54.5	66.9
	Age 13-17	151.8	175.8	150.4	144.2	155.3
	Age 18-20	115.8	149.9	104.7	104.0	119.9
	Age 21-64	164.4	179.4	191.5	141.2	172.0
	Age 65-74	76.8	75.8	63.0	40.0	64.2
	Age 75+	4.8	16.9	8.6	11.4	10.4
Other Outpatient Therapy	Age 0-3	11.8	12.9	22.5	7.8	13.7
	Age 4-12	180.3	220.5	203.0	106.3	177.4
	Age 13-17	303.6	283.1	242.2	190.2	254.5
	Age 18-20	65.6	108.0	81.8	88.9	85.3
	Age 21-64	121.2	108.0	84.4	97.4	104.5
	Age 65-74	12.8	12.0	13.0	10.1	12.0
Case Management	Age 0-3	1.2	1.0	3.3	2.7	2.0
	Age 4-12	40.6	50.6	42.5	77.7	52.9
	Age 13-17	61.7	63.2	59.9	114.5	75.0
	Age 18-20	143.0	179.3	183.3	210.6	175.5
	Age 21-64	181.0	222.9	218.0	439.8	242.1
	Age 65-74	71.6	116.9	124.4	109.4	105.5
	Age 75+	16.0	26.9	32.7	23.5	24.8

Data Source: MMIS Encounter and Enrollment Tables

\*Providence contract ended December 31, 2002.

\*\*Washington County MHO Agreement became effective January 1, 2003

Clackamas MHO (cont')		2002		2003		Annual Average
Service Category	Age Group	3 <sup>rd</sup> Qtr	4 <sup>th</sup> Qtr	1 <sup>st</sup> Qtr	2 <sup>nd</sup> Qtr	
Supportive Day Program	Age 0-3	0.0	1.0	0.0	0.0	0.3
	Age 4-12	1.0	3.3	3.5	4.3	3.0
	Age 13-17	1.2	3.2	0.3	3.3	2.0
	Age 18-20	6.4	29.4	15.1	6.2	14.6
	Age 21-64	225.0	391.6	453.7	824.3	422.5
	Age 65-74	132.3	189.1	161.4	175.5	164.5
	Age 75+	0.0	0.0	0.0	8.3	2.0
Crisis Services	Age 13-17	0.0	0.0	0.6	2.9	0.9
	Age 18-20	2.0	0.0	4.1	4.2	2.4
	Age 21-64	2.3	1.9	3.2	2.3	2.4
	Age 75+	0.0	0.0	3.7	0.0	0.9
Medication Management	Age 4-12	12.8	13.4	14.9	9.5	12.7
	Age 13-17	16.0	16.1	14.4	15.3	15.4
	Age 18-20	24.2	32.8	33.1	58.2	35.3
	Age 21-64	69.3	76.1	73.0	126.0	80.9
	Age 65-74	22.4	12.8	13.4	24.0	18.1
	Age 75+	1.5	1.5	1.8	0.0	1.2
Consultation	Age 0-3	12.8	13.4	14.9	9.5	12.7
	Age 4-12	16.0	16.1	14.4	15.3	15.4
	Age 13-17	24.2	32.8	33.1	58.2	35.3
	Age 18-20	69.3	76.1	73.0	126.0	80.9
	Age 21-64	22.4	12.8	13.4	24.0	18.1
	Age 65-74	1.5	1.5	1.8	0.0	1.2
Family Support	Age 0-3	0.0	0.0	0.6	0.0	0.2
	Age 4-12	33.8	22.8	8.7	9.6	18.7
	Age 13-17	10.4	18.0	3.2	4.4	8.9
	Age 21-64	1.1	5.0	0.0	0.0	1.8
Other Interpretive Services	Age 21-64	0.9	0.5	0.1	0.4	0.5
	Age 65-74	1.6	1.6	0.8	0.8	1.2
Alternatives to Inpatient Hospitalization	Age 4-12	0.0	0.1	0.0	0.8	0.2
	Age 13-17	0.0	0.0	2.2	2.2	1.1
	Age 21-64	0.4	0.7	1.0	1.7	0.8

Data Source: MMIS Encounter and Enrollment Tables

\*Providence contract ended December 31, 2002.

\*\*Washington County MHO Agreement became effective January 1, 2003

**TABLE 7: Monthly Average Outpatient Units of Service per 1,000 by Service Categories – FamilyCare, Inc.**

FamilyCare		2002		2003		Annual Average
Service Category	Age Group	3 <sup>rd</sup> Qtr	4 <sup>th</sup> Qtr	1 <sup>st</sup> Qtr	2 <sup>nd</sup> Qtr	
Assessment & Evaluation	Age 0-3	2.6	0.0	0.0	3.4	1.5
	Age 4-12	25.5	4.5	16.6	37.2	21.0
	Age 13-17	36.5	6.9	23.7	42.2	27.5
	Age 18-20	12.0	12.2		6.2	8.1
	Age 21-64	36.4	10.7	12.5	49.2	24.0
	Age 65-74	0.0	0.0	30.2	0.0	7.6
Individual Outpatient Therapy	Age 0-3	0.0	0.0	1.4	0.7	0.5
	Age 4-12	91.0	37.5	66.1	96.7	72.8
	Age 13-17	83.0	35.6	48.5	69.6	59.2
	Age 18-20	40.0	4.1	14.2	0.0	16.1
	Age 21-64	124.1	29.1	47.4	83.0	69.7
	Age 65-74	50.7	11.0	13.0	16.7	22.7
	Age 75+	0.0	0.0	6.7	0.0	1.7
Other Outpatient Therapy	Age 0-3	22.0	4.2	2.1	0.0	6.8
	Age 4-12	128.7	36.3	63.9	109.8	83.9
	Age 13-17	114.6	49.5	37.1	79.1	70.0
	Age 18-20	17.0	4.1	0.0	0.0	6.0
	Age 21-64	129.5	57.6	38.5	106.9	81.1
	Age 65-74	52.9	0.0	17.3	0.0	17.3
	Age 75+	0.0	21.1	0.0	0.0	5.1
Case Management	Age 0-3	2.9	1.7	0.0	3.0	1.9
	Age 4-12	19.4	5.8	17.6	30.8	18.5
	Age 13-17	35.5	15.3	11.4	28.9	22.8
	Age 18-20	29.0	18.3	34.4	210.2	61.0
	Age 21-64	54.2	21.9	34.9	73.3	41.6
	Age 65-74	33.0	8.8	0.0	0.0	10.3
	Age 75+	0.0	0.0	13.5	26.3	10.3

Data Source: MMIS Encounter and Enrollment Tables

\*Providence contract ended December 31, 2002.

\*\*Washington County MHO Agreement became effective January 1, 2003

FamilyCare (cont')		2002		2003		Annual Average
Service Category	Age Group	3 <sup>rd</sup> Qtr	4 <sup>th</sup> Qtr	1 <sup>st</sup> Qtr	2 <sup>nd</sup> Qtr	
Supportive Day Program	Age 4-12	23.6	6.2	8.9	13.9	12.9
	Age 13-17	95.0	27.7	63.8	63.0	62.3
	Age 18-20	231.8	146.5	161.1	646.1	267.6
	Age 21-64	976.1	347.8	618.1	1175.7	714.5
	Age 65-74	1627.8	487.9	518.4	843.4	867.1
	Age 75+	0.0	0.0	188.6	289.5	123.3
Medication Management	Age 4-12	14.6	4.7	8.7	18.5	11.6
	Age 13-17	36.5	11.9	10.4	24.6	20.9
	Age 18-20	16.0	6.1	16.6	46.4	19.0
	Age 21-64	53.2	18.3	36.1	74.0	40.6
	Age 65-74	22.0	0.0	19.4	18.8	15.1
	Age 75+	14.1	7.0	0.0	0.0	5.1
Consultation	Age 0-3	2.9	1.7	0.4	1.7	1.7
	Age 4-12	3.5	0.6	4.9	5.2	3.6
	Age 13-17	7.0	8.9	9.4	0.9	6.5
	Age 18-20	1.0	0.0	0.0	3.1	0.9
	Age 21-64	2.2	1.0	1.5	3.9	1.9
	Age 65-74	4.4	0.0	2.2	2.1	2.2
	Age 75+	14.1	0.0	6.7	6.6	6.9
Family Support	Age 0-3	1.1	0.0	0.0	0.0	0.3
	Age 4-12	1.6	0.0	4.2	92.7	25.8
	Age 13-17	64.0	19.8	0.0	0.0	20.6
Other Interpretive Services	Age 21-64	1.6	0.8	1.9	5.6	1.9
	Age 65-74	4.4	0.0	4.3	4.2	3.2
	Age 75+	14.1	7.0	0.0	0.0	5.1

Data Source: MMIS Encounter and Enrollment Tables

\*Providence contract ended December 31, 2002.

\*\*Washington County MHO Agreement became effective January 1, 2003



**TABLE 7: Monthly Average Outpatient Units of Service per 1,000 by Service Categories – GOBHI**

GOBHI		2002		2003		Annual Average
Service Category	Age Group	3 <sup>rd</sup> Qtr	4 <sup>th</sup> Qtr	1 <sup>st</sup> Qtr	2 <sup>nd</sup> Qtr	
Assessment & Evaluation	Age 0-3	2.0	4.4	4.9	1.8	3.3
	Age 4-12	27.1	34.8	45.8	36.0	36.0
	Age 13-17	41.9	68.2	58.8	53.2	55.5
	Age 18-20	19.4	50.6	30.6	43.3	35.3
	Age 21-64	48.1	50.3	50.3	61.6	52.6
	Age 65-74	5.9	21.7	17.5	11.6	14.2
	Age 75+	8.6	12.5	10.3	5.4	9.3
Individual Outpatient Therapy	Age 0-3	2.8	3.3	0.9	0.8	1.9
	Age 4-12	74.8	84.4	74.8	84.4	79.6
	Age 13-17	132.3	140.2	136.6	151.5	140.2
	Age 18-20	62.7	68.1	57.1	65.4	63.3
	Age 21-64	181.5	173.5	123.2	161.0	161.3
	Age 65-74	16.6	14.6	16.3	15.4	15.7
	Age 75+	22.9	15.4	5.2	14.7	14.6
Other Outpatient Therapy	Age 0-3	2.6	2.9	6.0	0.9	3.1
	Age 4-12	77.8	66.7	67.5	68.9	70.2
	Age 13-17	99.7	133.3	118.2	152.8	126.1
	Age 18-20	38.1	13.0	35.1	66.1	36.0
	Age 21-64	103.4	118.6	106.6	192.8	122.3
	Age 65-74	6.3	13.0	21.6	28.2	17.1
Case Management	Age 0-3	0.0	4.7	1.0	1.6	1.8
	Age 4-12	27.0	64.4	67.4	102.4	65.6
	Age 13-17	54.6	123.1	103.7	148.5	107.7
	Age 18-20	63.7	76.2	58.0	102.5	73.1
	Age 21-64	196.0	195.3	248.7	509.6	257.0
	Age 65-74	96.3	101.5	104.0	119.1	105.1
	Age 75+	33.8	48.8	19.1	20.4	30.8
Supportive Day Program	Age 4-12	5.6	12.0	19.8	30.6	17.1
	Age 13-17	22.5	18.9	16.9	21.4	19.9
	Age 18-20	44.3	12.8	24.0	11.0	24.3
	Age 21-64	727.0	702.7	829.7	1982.4	937.6
	Age 65-74	293.2	156.3	318.1	584.9	335.3
	Age 75+	19.8	8.7	7.8	4.0	10.2

Data Source: MMIS Encounter and Enrollment Tables

\*Providence contract ended December 31, 2002.

\*\*Washington County MHO Agreement became effective January 1, 2003

GOBHI (continued)		2002		2003		Annual Average
Service Category	Age Group	3 <sup>rd</sup> Qtr	4 <sup>th</sup> Qtr	1 <sup>st</sup> Qtr	2 <sup>nd</sup> Qtr	
Crisis Services	Age 0-3	0.0	0.5	0.0	0.3	0.2
	Age 4-12	0.4	1.6	2.6	2.9	1.9
	Age 13-17	5.4	8.4	9.9	8.3	8.0
	Age 18-20	3.2	5.5	2.6	5.5	4.1
	Age 21-64	10.1	13.3	19.3	32.5	16.8
	Age 65-74	15.1	0.0	5.3	0.8	5.3
	Age 75+	4.1	1.2	1.6	1.6	2.1
Medication Management	Age 0-3	0.7	0.7	0.3	0.5	0.5
	Age 4-12	32.4	31.5	26.9	29.6	30.1
	Age 13-17	42.8	52.0	43.3	54.6	48.2
	Age 18-20	35.2	33.4	44.6	44.4	38.8
	Age 21-64	116.2	117.2	114.9	218.5	131.8
	Age 65-74	33.7	36.3	41.6	55.2	41.5
	Age 75+	14.5	9.5	12.9	13.4	12.5
Consultation	Age 0-3	0.0	0.3	0.0	0.0	0.1
	Age 4-12	14.3	17.7	17.2	16.4	16.4
	Age 13-17	22.5	40.2	22.0	27.2	27.9
	Age 18-20	16.0	6.3	6.3	4.0	8.6
	Age 21-64	11.9	12.3	8.7	15.6	11.8
	Age 65-74	11.9	7.1	2.0	10.8	8.0
	Age 75+	8.6	8.2	1.3	0.3	4.7
Family Support	Age 4-12	2.0	2.9	5.1	23.0	8.4
	Age 13-17	0.0	0.2	1.0	4.2	1.4
	Age 21-64	0.4	8.4	17.2	580.4	95.6
	Age 65-74	0.0	0.0	17.9	112.5	31.8
Other Interpretive Services	Age 0-3	0.0	0.3	5.2	0.0	1.4
	Age 4-12	0.0	0.6	7.2	4.3	3.1
	Age 13-17	0.0	0.0	0.0	0.5	0.1
	Age 21-64	0.0	0.0	1.8	2.8	0.9
Alternatives to Inpatient Hospitalization	Age 4-12	0.0	1.1	2.1	2.7	1.5
	Age 13-17	0.0	3.6	6.5	5.0	3.8
	Age 18-20	0.0	0.0	0.3	0.0	0.0
	Age 21-64	1.0	1.7	1.3	2.5	1.5

Data Source: MMIS Encounter and Enrollment Tables

\*Providence contract ended December 31, 2002.

\*\*Washington County MHO Agreement became effective January 1, 2003

**TABLE 7: Monthly Average Outpatient Units of Service per 1,000 by Service Categories – Jefferson Behavioral Health (JBH)**

JBH		2002		2003		Annual Average
Service Category	Age Group	3 <sup>rd</sup> Qtr	4 <sup>th</sup> Qtr	1 <sup>st</sup> Qtr	2 <sup>nd</sup> Qtr	
Assessment & Evaluation	Age 0-3	13.4	7.6	6.4	8.7	9.0
	Age 4-12	66.5	75.9	61.1	66.2	67.4
	Age 13-17	90.7	106.9	100.0	84.5	95.6
	Age 18-20	67.9	65.5	53.4	58.3	61.8
	Age 21-64	90.3	95.2	73.8	73.2	85.1
	Age 65-74	19.9	12.9	17.8	14.8	16.4
	Age 75+	12.5	5.0	3.6	4.2	6.4
Individual Outpatient Therapy	Age 0-3	5.7	5.8	6.8	8.7	6.7
	Age 4-12	119.9	152.0	136.2	132.1	135.1
	Age 13-17	208.7	225.2	217.5	227.9	219.8
	Age 18-20	90.5	108.9	92.7	102.5	98.4
	Age 21-64	241.7	252.7	222.4	237.7	239.5
	Age 65-74	19.6	13.1	21.1	22.9	19.1
	Age 75+	6.1	3.9	2.8	4.2	4.3
Other Outpatient Therapy	Age 0-3	9.1	9.8	10.8	20.7	12.6
	Age 4-12	129.2	137.7	132.7	137.5	134.3
	Age 13-17	220.8	258.2	236.5	225.5	235.3
	Age 18-20	37.0	45.1	54.0	33.2	42.8
	Age 21-64	153.0	147.6	125.9	137.5	142.3
	Age 65-74	22.7	22.1	14.3	24.8	20.9
	Age 75+	3.9	4.9	1.0	0.3	2.6
Case Management	Age 0-3	1.2	0.8	1.8	1.6	1.3
	Age 4-12	21.7	27.7	27.4	23.3	25.0
	Age 13-17	46.8	39.7	38.0	38.3	40.7
	Age 18-20	82.6	79.8	50.6	98.3	76.8
	Age 21-64	264.0	268.2	261.9	402.5	285.5
	Age 65-74	118.9	94.3	74.9	85.2	93.3
	Age 75+	27.7	23.5	12.1	16.1	20.0

Data Source: MMIS Encounter and Enrollment Tables

\*Providence contract ended December 31, 2002.

\*\*Washington County MHO Agreement became effective January 1, 2003

JBH (continued)		2002		2003		Annual Average
Service Category	Age Group	3 <sup>rd</sup> Qtr	4 <sup>th</sup> Qtr	1 <sup>st</sup> Qtr	2 <sup>nd</sup> Qtr	
Supportive Day Program	Age 0-3	0.0	0.3	2.0	0.0	0.6
	Age 4-12	18.6	22.8	24.4	26.2	23.0
	Age 13-17	20.0	49.2	41.3	37.2	37.0
	Age 18-20	10.6	17.9	9.7	73.0	24.2
	Age 21-64	516.8	342.7	283.6	549.8	411.8
	Age 65-74	297.2	266.5	161.4	250.4	243.8
	Age 75+	1.5	2.4	3.6	1.3	2.2
Crisis Services	Age 4-12	0.3	0.1	0.3	0.0	0.2
	Age 13-17	1.0	1.0	0.8	1.3	1.0
	Age 18-20	3.0	0.7	0.5	1.3	1.4
	Age 21-64	3.8	4.3	2.8	2.8	3.6
	Age 65-74	3.0	0.0	0.0	0.0	0.7
Medication Management	Age 0-3	0.7	0.4	0.0	0.5	0.4
	Age 4-12	17.4	17.1	17.7	19.4	17.9
	Age 13-17	30.6	29.4	31.3	25.8	29.3
	Age 18-20	24.2	28.2	32.3	43.7	31.0
	Age 21-64	88.1	85.0	82.6	118.1	90.3
	Age 65-74	22.9	29.4	18.5	19.7	22.7
	Age 75+	5.4	2.6	3.0	5.5	4.1
Consultation	Age 0-3	1.0	0.8	0.9	0.6	0.8
	Age 4-12	9.5	16.5	12.2	12.6	12.7
	Age 13-17	19.5	28.6	17.9	15.9	20.5
	Age 18-20	7.1	5.3	4.2	5.7	5.6
	Age 21-64	7.5	7.6	4.0	7.2	6.6
	Age 65-74	0.6	1.5	1.1	0.8	1.0
	Age 75+	6.5	2.6	0.6	1.1	2.7
Family Support	Age 4-12	0.0	0.4	0.1	0.1	0.1
Other Interpretive Services	Age 13-17	0.1	0.0	0.0	0.0	0.0
	Age 21-64	0.0	0.2	0.0	0.1	0.1
Alternatives to Inpatient Hospitalization	Age 18-20	3.3	1.1	3.1	5.6	3.1
	Age 21-64	8.3	6.5	8.7	12.0	8.4
	Age 65-74	0.2	0.0	0.0	0.8	0.2

Data Source: MMIS Encounter and Enrollment Tables

\*Providence contract ended December 31, 2002.

\*\*Washington County MHO Agreement became effective January 1, 2003

**TABLE 7: MONTHLY AVERAGE OUTPATIENT UNITS OF SERVICE PER 1,000 BY SERVICE CATEGORIES – LANE CARE**

LaneCare		2002		2003		Annual Average
Service Category	Age Group	3 <sup>rd</sup> Qtr	4 <sup>th</sup> Qtr	1 <sup>st</sup> Qtr	2 <sup>nd</sup> Qtr	
Assessment & Evaluation	Age 0-3	8.8	15.5	14.9	13.2	13.1
	Age 4-12	70.2	77.9	71.8	67.9	72.0
	Age 13-17	81.7	106.1	109.1	103.5	?
	Age 18-20	64.5	65.4	80.7	101.8	75.8
	Age 21-64	99.3	81.2	81.1	108.0	90.8
	Age 65-74	31.0	29.4	24.1	30.8	28.9
	Age 75+	14.6	31.1	10.8	15.1	18.1
Individual Outpatient Therapy	Age 0-3	2.6	5.5	7.6	3.9	4.9
	Age 4-12	153.5	242.6	241.7	281.6	229.5
	Age 13-17	355.2	393.4	437.0	471.8	414.5
	Age 18-20	166.6	197.0	255.3	332.3	228.0
	Age 21-64	439.7	436.4	459.1	616.0	471.1
	Age 65-74	99.4	96.9	84.7	102.7	95.9
	Age 75+	51.9	61.0	28.1	19.7	40.7
Other Outpatient Therapy	Age 0-3	24.9	34.0	39.9	48.9	36.8
	Age 4-12	308.7	287.5	341.4	351.0	321.9
	Age 13-17	364.5	404.1	370.9	475.5	403.8
	Age 18-20	80.8	103.4	144.6	364.3	156.1
	Age 21-64	136.5	135.9	124.6	193.0	142.2
	Age 65-74	11.2	12.0	4.8	15.2	10.8
	Age 75+	1.9	6.8	2.7	0.0	2.9
Case Management	Age 0-3	0.6	4.9	0.8	2.5	2.2
	Age 4-12	42.1	60.5	52.6	47.1	50.6
	Age 13-17	91.0	108.8	104.2	111.2	103.8
	Age 18-20	55.8	43.3	41.8	43.0	46.5
	Age 21-64	117.2	112.3	129.1	169.9	127.0
	Age 65-74	30.1	8.1	15.4	27.2	20.1
	Age 75+	16.2	11.0	5.1	17.9	12.5

Data Source: MMIS Encounter and Enrollment Tables

\*Providence contract ended December 31, 2002.

\*\*Washington County MHO Agreement became effective January 1, 2003

LaneCare (continued)		2002		2003		Annual Average
Service Category	Age Group	3 <sup>rd</sup> Qtr	4 <sup>th</sup> Qtr	1 <sup>st</sup> Qtr	2 <sup>nd</sup> Qtr	
Supportive Day Program	Age 0-3	6.7	25.3	25.9	65.1	30.5
	Age 4-12	157.4	271.3	285.3	238.0	237.8
	Age 13-17	542.6	445.1	389.7	684.0	515.2
	Age 18-20	147.4	119.7	125.3	88.1	123.1
	Age 21-64	603.8	535.5	493.7	770.9	582.2
	Age 65-74	228.4	240.3	172.4	99.1	186.0
	Age 75+	8.4	33.1	43.3	58.8	35.4
Medication Management	Age 0-3	0.4	1.4	1.0	2.2	1.2
	Age 4-12	34.5	38.2	35.3	34.3	35.6
	Age 13-17	76.9	78.0	73.0	95.9	81.0
	Age 18-20	40.6	45.4	41.5	47.8	43.5
	Age 21-64	113.9	114.3	120.2	164.0	123.4
	Age 65-74	46.0	40.1	48.7	34.4	42.3
	Age 75+	18.5	24.6	18.3	13.4	18.8
Consultation	Age 0-3	1.5	3.5	1.7	2.2	2.3
	Age 4-12	9.9	11.5	18.1	19.1	14.6
	Age 13-17	26.6	19.5	17.4	20.5	21.0
	Age 18-20	8.7	10.1	6.3	10.3	8.8
	Age 21-64	8.3	8.7	9.1	13.3	9.4
	Age 65-74	7.7	5.5	7.9	2.2	5.9
	Age 75+	2.9	1.9	0.7	1.4	1.8
Family Support	Age 0-3	5.5	5.3	5.1	16.3	8.0
	Age 4-12	44.0	39.7	34.9	34.9	38.4
	Age 13-17	7.1	13.4	5.1	21.2	11.7
	Age 18-20	27.9	29.4	37.3	21.7	29.5
	Age 21-64	147.8	182.3	279.2	458.1	239.3
	Age 65-74	41.7	43.1	138.2	123.2	85.9
	Age 75+	16.2	26.6	21.3	23.6	21.9
Other Interpretive Services	Age 21-64	1.8	2.0	3.2	5.5	2.8
Alternatives to Inpatient Hospitalization	Age 4-12	11.5	9.1	0.9	2.4	6.0
	Age 13-17	1.7	1.0	0.4	0.0	0.8
	Age 18-20	7.6	12.2	8.9	10.7	9.8
	Age 21-64	23.5	22.7	23.6	31.1	24.5

Data Source: MMIS Encounter and Enrollment Tables

\*Providence contract ended December 31, 2002.

\*\*Washington County MHO Agreement became effective January 1, 2003

**TABLE 7: Monthly Average Outpatient Units of Service per 1,000 by Service Categories – Mid-Valley Behavioral Care Network (MVBCN)**

MVBCN		2002		2003		Annual Average
Service Category	Age Group	3 <sup>rd</sup> Qtr	4 <sup>th</sup> Qtr	1 <sup>st</sup> Qtr	2 <sup>nd</sup> Qtr	
Assessment & Evaluation	Age 0-3	13.0	12.7	5.6	5.1	9.1
	Age 4-12	54.2	70.4	41.4	53.2	54.7
	Age 13-17	98.7	105.5	79.4	93.7	94.2
	Age 18-20	58.8	62.0	33.8	64.4	54.6
	Age 21-64	99.8	87.1	46.8	96.3	82.5
	Age 65-74	22.7	13.4	8.4	18.3	15.7
	Age 75+	8.2	8.0	3.7	6.4	6.6
Individual Outpatient Therapy	Age 0-3	5.2	10.3	5.7	4.3	6.3
	Age 4-12	155.4	182.7	124.6	176.0	159.6
	Age 13-17	316.0	371.8	295.7	385.8	342.4
	Age 18-20	163.6	216.1	105.3	181.7	166.9
	Age 21-64	357.2	363.6	218.3	455.1	339.8
	Age 65-74	54.6	61.2	28.1	46.4	47.8
	Age 75+	24.3	22.1	12.9	26.3	21.4
Other Outpatient Therapy	Age 0-3	21.7	29.4	10.9	16.8	19.7
	Age 4-12	186.0	240.5	157.1	230.8	203.5
	Age 13-17	269.2	317.8	227.3	352.1	291.8
	Age 18-20	41.8	87.5	53.4	56.0	59.9
	Age 21-64	105.6	123.1	52.9	154.7	105.3
	Age 65-74	27.9	29.1	16.9	18.3	23.2
	Age 75+	1.2	5.8	1.6	0.0	2.2
Case Management	Age 0-3	1.8	3.1	1.9	2.9	2.4
	Age 4-12	27.1	39.5	28.9	39.4	33.7
	Age 13-17	48.9	56.2	41.9	53.4	50.1
	Age 18-20	28.3	36.2	27.1	36.3	31.7
	Age 21-64	101.4	109.0	73.8	188.1	110.4
	Age 65-74	43.2	50.9	24.0	49.8	42.0
	Age 75+	4.2	2.9	2.7	3.0	3.2

Data Source: MMIS Encounter and Enrollment Tables

\*Providence contract ended December 31, 2002.

\*\*Washington County MHO Agreement became effective January 1, 2003

MVBCN <i>(continued)</i>		2002		2003		
Service Category	Age Group	3 <sup>rd</sup> Qtr	4 <sup>th</sup> Qtr	1 <sup>st</sup> Qtr	2 <sup>nd</sup> Qtr	Annual Average
Supportive Day Program	Age 0-3	1.1	2.4	2.7	3.1	2.3
	Age 4-12	6.4	7.8	6.4	10.1	7.7
	Age 13-17	30.2	43.6	20.1	14.3	26.9
	Age 18-20	83.0	64.2	14.8	23.4	49.1
	Age 21-64	453.7	473.6	365.1	874.8	504.0
	Age 65-74	162.2	135.0	156.1	278.0	181.5
	Age 75+	6.4	11.5	2.2	2.8	5.8
Medication Management	Age 0-3	0.4	0.5	0.1	0.3	0.3
	Age 4-12	20.6	24.8	16.5	28.3	22.6
	Age 13-17	49.0	56.6	37.1	50.2	48.1
	Age 18-20	30.2	31.9	24.2	35.7	30.3
	Age 21-64	114.4	116.4	83.0	182.8	118.0
	Age 65-74	60.0	40.8	39.7	50.0	47.6
	Age 75+	17.0	14.3	10.0	12.3	13.4
Consultation	Age 0-3	0.8	0.7	0.4	0.3	0.5
	Age 4-12	9.7	12.5	10.1	10.2	10.6
	Age 13-17	34.7	46.0	26.0	27.6	33.4
	Age 18-20	12.1	13.6	7.3	10.3	10.9
	Age 21-64	18.4	15.4	11.0	22.3	16.3
	Age 65-74	6.3	12.0	1.9	8.3	7.1
	Age 75+	2.9	2.8	2.2	2.5	2.6
Family Support	Age 0-3	0.0	2.9	0.0	0.4	0.8
	Age 4-12	0.5	3.5	0.5	0.9	1.4
	Age 13-17	0.9	3.8	2.3	0.0	1.7
	Age 21-64	0.0	0.6	0.0	0.0	0.2
Other Interpretive Services	Age 13-17	0.0	0.0	0.5	0.0	0.1
	Age 21-64	0.0	0.0	0.0	0.1	0.0
Alternatives to Inpatient Hospitalization	Age 4-12	0.0	0.7	0.0	0.4	0.3
	Age 13-17	0.0	0.9	0.1	0.0	0.2
	Age 18-20	1.7	0.0	0.1	2.8	1.1
	Age 21-64	0.8	0.4	0.2	1.5	0.7
Subacute Care	Age 18-20	0.0	1.2	0.0	0.0	0.3
	Age 21-64	0.3	0.3	0.5	0.0	0.3

Data Source: MMIS Encounter and Enrollment Tables

\*Providence contract ended December 31, 2002.

\*\*Washington County MHO Agreement became effective January 1, 2003



**TABLE 7: Monthly Average Outpatient Units of Service per 1,000 by Service Categories – Providence Behavioral Health**

<b>*Providence</b>		<b>2002</b>		<b>2003</b>		<b>Annual Average</b>
<b>Service Category</b>	<b>Age Group</b>	<b>3<sup>rd</sup> Qtr</b>	<b>4<sup>th</sup> Qtr</b>	<b>1<sup>st</sup> Qtr</b>	<b>2<sup>nd</sup> Qtr</b>	
Assessment & Evaluation	Age 0-3	1.7	1.9	0.9	0.0	1.1
	Age 4-12	38.9	40.5	8.8	0.0	22.1
	Age 13-17	107.6	188.6	47.7	0.0	86.1
	Age 18-20	35.7	45.5	18.6	0.0	24.9
	Age 21-64	79.0	92.3	22.8	0.0	48.5
	Age 65-74	14.5	13.5	12.0	0.0	10.0
	Age 75+	12.4	6.8	2.7	0.0	5.5
Individual Outpatient Therapy	Age 0-3	3.3	3.2	0.3	0.0	1.7
	Age 4-12	84.8	101.9	30.4	0.0	54.4
	Age 13-17	379.7	561.7	187.4	0.0	282.6
	Age 18-20	67.8	91.1	35.8	0.0	48.5
	Age 21-64	302.5	307.5	98.0	0.0	177.0
	Age 65-74	58.4	66.3	20.0	0.0	36.2
	Age 75+	31.0	14.9	3.4	0.0	12.3
Other Outpatient Therapy	Age 0-3	104.1	48.4	5.6	0.0	39.5
	Age 4-12	140.0	132.8	62.2	0.0	83.9
	Age 13-17	235.9	414.6	148.5	0.0	200.1
	Age 18-20	24.2	86.5	42.8	0.0	37.9
	Age 21-64	100.3	194.9	85.6	0.0	95.1
	Age 65-74	45.9	30.2	7.6	0.0	20.9
Case Management	Age 0-3	0.8	1.3	0.4	0.0	0.6
	Age 4-12	14.6	23.1	9.2	0.0	11.8
	Age 13-17	10.5	26.0	13.5	0.0	12.5
	Age 18-20	63.8	121.6	31.6	0.0	54.0
	Age 21-64	276.6	290.1	67.5	0.0	158.6
	Age 65-74	60.0	69.4	16.4	0.0	36.5
	Age 75+	0.0	1.0	0.0	0.0	0.3

Data Source: MMIS Encounter and Enrollment Tables

\*Providence contract ended December 31, 2002.

\*\*Washington County MHO Agreement became effective January 1, 2003

<b>Providence (continued)</b>		<b>2002</b>		<b>2003</b>		<b>Annual Average</b>
<b>Service Category</b>	<b>Age Group</b>	<b>3<sup>rd</sup> Qtr</b>	<b>4<sup>th</sup> Qtr</b>	<b>1<sup>st</sup> Qtr</b>	<b>2<sup>nd</sup> Qtr</b>	
Supportive Day Program	Age 0-3	3.1	0.5	0.0	0.0	0.9
	Age 4-12	15.0	13.2	1.7	0.0	7.5
	Age 13-17	12.9	14.7	0.0	0.0	6.9
	Age 18-20	63.8	153.9	19.1	0.0	59.0
	Age 21-64	783.5	753.5	257.2	0.0	448.6
	Age 65-74	549.3	566.3	159.3	0.0	318.8
	Age 75+	156.2	202.4	93.4	0.0	113.2
Medication Management	Age 4-12	17.7	22.8	5.8	0.0	11.6
	Age 13-17	54.1	63.9	14.1	0.0	33.0
	Age 18-20	30.8	48.7	14.9	0.0	23.5
	Age 21-64	115.2	104.2	34.3	0.0	63.4
	Age 65-74	31.0	26.2	4.8	0.0	15.5
	Age 75+	15.9	8.8	0.7	0.0	6.3
Consultation	Age 4-12	3.7	4.4	1.7	0.0	2.5
	Age 13-17	39.4	66.7	22.9	0.0	32.3
	Age 18-20	0.4	2.7	1.9	0.0	1.2
	Age 21-64	11.1	6.8	1.8	0.0	4.9
	Age 65-74	6.4	2.4	2.0	0.0	2.7
	Age 75+	15.2	6.1	0.0	0.0	5.3
Other Interpretive Services	Age 4-12	4.9	3.3	0.0	0.0	2.0
	Age 13-17	1.2	1.6	0.0	0.0	0.7
	Age 18-20	1.8	2.7	0.0	0.0	1.1
	Age 21-64	9.5	7.6	0.3	0.0	4.3
	Age 65-74	4.0	4.0	0.0	0.0	2.0
	Age 75+	2.4	2.0	0.0	0.0	1.1
Alternatives to Inpatient Hospitalization	Age 4-12	2.3	0.0	0.0	0.0	0.6
	Age 13-17	1.8	0.0	6.2	0.0	2.0
	Age 18-20	15.9	7.3	0.0	0.0	5.9
	Age 21-64	15.5	5.7	1.5	0.0	5.7
Subacute Care	Age 21-64	0.1	0.0	0.0	0.0	0.0

Data Source: MMIS Encounter and Enrollment Tables

\*Providence contract ended December 31, 2002.

\*\*Washington County MHO Agreement became effective January 1, 2003

**TABLE 7: Monthly Average Outpatient Units of Service per 1,000 by Service Categories – Tuality Health Alliance (THA)**

THA		2002		2003		Annual Average
Service Category	Age Group	3 <sup>rd</sup> Qtr	4 <sup>th</sup> Qtr	1 <sup>st</sup> Qtr	2 <sup>nd</sup> Qtr	
Assessment & Evaluation	Age 0-3	1.7	0.0	0.0	3.6	1.4
	Age 4-12	19.9	4.2	14.7	16.9	14.0
	Age 13-17	28.5	2.7	28.0	31.1	23.0
	Age 18-20	19.5	10.3	33.8	25.0	22.4
	Age 21-64	44.3	12.9	27.4	36.6	29.6
	Age 65-74	38.5	0.0	17.1	16.5	17.8
	Age 75+	0.0	21.6	0.0	18.6	10.2
Individual Outpatient Therapy	Age 0-3	0.0	0.0	0.0	1.4	0.4
	Age 4-12	65.2	18.1	62.3	74.5	55.8
	Age 13-17	132.7	46.1	107.6	115.2	100.8
	Age 18-20	78.1	16.4	73.3	79.2	62.2
	Age 21-64	173.5	48.8	128.4	199.6	129.5
	Age 65-74	43.3	18.7	51.2	49.6	41.2
	Age 75+	22.9	32.4	75.3	116.0	64.7
Other Outpatient Therapy	Age 0-3	2.5	0.0	6.6	5.0	3.6
	Age 4-12	98.3	26.2	66.6	82.0	68.8
	Age 13-17	109.1	16.9	65.7	121.0	79.3
	Age 18-20	0.0	0.0	22.6	20.8	10.9
	Age 21-64	22.1	3.0	18.1	2.5	12.6
Case Management	Age 4-12	11.4	7.3	16.6	13.7	12.4
	Age 13-17	16.4	15.6	17.0	31.1	20.5
	Age 18-20	0.0	0.0	15.0	10.4	6.5
	Age 21-64	30.5	11.2	46.8	88.3	37.8
	Age 65-74	16.8	16.4	0.0	16.5	12.2
	Age 75+	0.0	5.4	2.4	0.0	1.9
Supportive Day Program	Age 4-12	31.6	3.1	21.9	7.3	15.8
	Age 13-17	97.0	8.1	12.2	4.6	28.1
	Age 18-20	54.7	6.2	9.4	39.6	27.4
	Age 21-64	237.5	67.5	252.7	210.7	188.4
	Age 65-74	187.5	109.8	345.4	303.7	241.5

Data Source: MMIS Encounter and Enrollment Tables

\*Providence contract ended December 31, 2002.

\*\*Washington County MHO Agreement became effective January 1, 2003

THA <i>(continued)</i>		2002		2003		Annual Average
Service Category	Age Group	3 <sup>rd</sup> Qtr	4 <sup>th</sup> Qtr	1 <sup>st</sup> Qtr	2 <sup>nd</sup> Qtr	
Medication Management	Age 4-12	27.2	5.8	16.1	22.1	18.0
	Age 13-17	51.4	17.6	29.2	46.1	36.1
	Age 18-20	37.1	0.0	30.1	50.0	29.3
	Age 21-64	68.5	16.5	56.1	76.8	51.4
	Age 65-74	24.0	9.3	34.1	37.2	26.7
	Age 75+	0.0	0.0	9.4	0.0	2.5
Consultation	Age 4-12	6.2	0.5	9.4	8.7	6.3
	Age 13-17	0.0	0.0	4.9	0.0	1.3
	Age 18-20	0.0	0.0	5.6	0.0	1.5
	Age 21-64	1.4	0.0	0.0	3.3	0.9
	Age 65-74	12.0	0.0	8.5	6.2	6.7
	Age 75+	8.6	0.0	4.7	20.9	8.9
Other Interpretive Services	Age 4-12	0.0	0.0	0.0	0.5	0.1
	Age 13-17	0.0	0.0	0.0	3.5	1.0
	Age 21-64	0.0	0.0	0.0	1.6	0.2

**TABLE 7: Monthly Average Outpatient Units of Service per 1,000 by Service Categories – Verity**

Verity		2002		2003		Annual Average
Service Category	Age Group	3 <sup>rd</sup> Qtr	4 <sup>th</sup> Qtr	1 <sup>st</sup> Qtr	2 <sup>nd</sup> Qtr	
Assessment & Evaluation	Age 0-3	4.7	7.6	8.0	6.6	6.7
	Age 4-12	30.9	52.7	48.3	52.8	46.2
	Age 13-17	56.1	70.4	73.9	70.7	67.9
	Age 18-20	24.7	29.8	27.8	30.0	27.9
	Age 21-64	61.6	52.2	40.5	37.1	49.8
	Age 65-74	15.6	21.9	14.1	9.8	15.4
	Age 75+	4.2	3.9	4.6	5.3	4.5

Data Source: MMIS Encounter and Enrollment Tables

\*Providence contract ended December 31, 2002.

\*\*Washington County MHO Agreement became effective January 1, 2003

Verity (continued)		2002		2003		Annual Average
Service Category	Age Group	3 <sup>rd</sup> Qtr	4 <sup>th</sup> Qtr	1 <sup>st</sup> Qtr	2 <sup>nd</sup> Qtr	
Individual Outpatient Therapy	Age 0-3	5.1	7.7	8.7	8.1	7.4
	Age 4-12	140.8	181.3	170.9	181.4	168.6
	Age 13-17	207.8	276.0	314.9	289.9	272.6
	Age 18-20	106.9	79.7	77.2	82.1	87.3
	Age 21-64	208.4	182.1	128.8	144.9	171.0
	Age 65-74	34.1	34.7	18.3	28.2	28.9
	Age 75+	22.9	13.6	9.4	7.6	13.4
Other Outpatient Therapy	Age 0-3	18.1	31.1	29.7	27.8	26.7
	Age 4-12	223.6	218.9	195.4	203.6	210.4
	Age 13-17	243.3	235.6	283.6	252.1	253.8
	Age 18-20	75.8	89.3	66.8	39.1	70.3
	Age 21-64	263.0	234.1	169.0	200.5	221.3
	Age 65-74	30.9	27.6	21.3	25.1	26.2
	Age 75+	3.4	5.2	10.2	7.7	6.6
Case Management	Age 0-3	5.2	11.8	11.0	8.2	9.1
	Age 4-12	83.0	78.9	73.0	78.2	78.3
	Age 13-17	112.6	140.0	116.4	120.2	122.3
	Age 18-20	43.0	53.3	38.0	115.7	58.3
	Age 21-64	195.8	188.9	137.9	295.3	194.3
	Age 65-74	52.8	50.6	32.9	39.0	43.9
	Age 75+	31.0	17.8	13.3	14.6	19.2
Supportive Day Program	Age 0-3	73.9	102.0	47.0	18.5	60.3
	Age 4-12	253.2	245.2	225.4	277.6	250.3
	Age 13-17	124.3	176.5	170.3	185.2	164.3
	Age 18-20	77.6	122.7	73.9	79.6	89.4
	Age 21-64	1826.5	2249.9	2059.4	2263.5	2076.6
	Age 65-74	825.6	1033.5	888.2	813.9	890.5
	Age 75+	387.9	366.4	278.8	236.8	317.5
Crisis Services	Age 4-12	0.0	0.3	0.0	0.0	0.1
	Age 13-17	0.0	0.1	0.0	0.0	0.0
Medication Management	Age 0-3	0.5	0.8	0.6	0.8	0.7
	Age 4-12	24.9	23.5	22.3	28.8	24.9
	Age 13-17	63.0	57.9	49.3	72.0	60.5
	Age 18-20	35.0	38.2	27.5	47.6	36.4
	Age 21-64	113.8	127.1	100.8	193.0	126.5
	Age 65-74	30.1	35.9	31.6	32.3	32.5
	Age 75+	8.0	8.8	6.8	7.5	7.8

Data Source: MMIS Encounter and Enrollment Tables

\*Providence contract ended December 31, 2002.

\*\*Washington County MHO Agreement became effective January 1, 2003

Verity (continued)		2002		2003		Annual Average
Service Category	Age Group	3 <sup>rd</sup> Qtr	4 <sup>th</sup> Qtr	1 <sup>st</sup> Qtr	2 <sup>nd</sup> Qtr	
Consultation	Age 0-3	0.7	1.4	1.6	3.5	1.8
	Age 4-12	22.5	28.9	27.5	24.9	26.0
	Age 13-17	27.4	32.9	34.5	32.1	31.8
	Age 18-20	6.9	4.6	4.0	7.5	5.7
	Age 21-64	14.3	14.6	10.1	17.6	13.8
	Age 65-74	23.1	26.2	14.6	15.2	19.8
	Age 75+	15.2	20.4	25.8	9.6	17.8
Family Support	Age 0-3	2.4	3.8	2.2	3.5	3.0
	Age 4-12	75.5	81.3	43.9	23.5	56.0
	Age 13-17	133.5	137.2	70.6	107.3	111.9
	Age 18-20	9.9	7.4	4.0		5.9
	Age 21-64		0.6	0.6	5.7	1.2
Other Interpretive Services	Age 4-12	1.4	0.4	0.9	0.3	0.8
	Age 13-17	1.9	1.0	1.2	0.3	1.1
	Age 18-20	0.2	0.5	1.3	2.1	0.9
	Age 21-64	13.5	18.3	12.8	18.0	15.4
	Age 65-74	13.2	41.7	28.4	29.6	28.2
	Age 75+	2.9	1.0	1.2	1.0	1.5
Alternatives to Inpatient Hospitalization	Age 4-12	2.5	4.4	5.3	4.0	4.1
	Age 13-17	7.8	7.2	3.6	3.7	5.6
	Age 18-20	1.6	0.6	5.3	6.6	3.2
	Age 21-64	15.5	16.7	8.9	8.4	13.1
	Age 65-74	4.9	5.0	1.1	0.6	2.9

Data Source: MMIS Encounter and Enrollment Tables

\*Providence contract ended December 31, 2002.

\*\*Washington County MHO Agreement became effective January 1, 2003

**TABLE 7: Monthly Average Outpatient Units of Service per 1,000 by Service Categories – Washington County**

Washington		2002		2003		Annual Average
Service Category	Age Group	3 <sup>rd</sup> Qtr	4 <sup>th</sup> Qtr	1 <sup>st</sup> Qtr	2 <sup>nd</sup> Qtr	
Assessment & Evaluation	Age 0-3	0.0	0.0	2.7	3.6	1.6
	Age 4-12	0.0	0.0	30.8	46.4	19.3
	Age 13-17	0.0	0.0	328.8	135.6	119.4
	Age 18-20	0.0	0.0	34.3	54.9	22.3
	Age 21-64	0.0	0.0	75.0	78.8	38.6
	Age 65-74	0.0	0.0	24.0	37.2	15.3
	Age 75+	0.0	0.0	2.8	10.2	3.2
Individual Outpatient Therapy	Age 0-3	0.0	0.0	2.4	0.0	0.6
	Age 4-12	0.0	0.0	65.6	117.4	45.5
	Age 13-17	0.0	0.0	398.0	755.7	576.9
	Age 18-20	0.0	0.0	125.7	146.3	68.5
	Age 21-64	0.0	0.0	212.3	357.8	142.3
	Age 65-74	0.0	0.0	51.4	141.7	48.1
	Age 75+	0.0	0.0	9.5	20.9	7.6
Other Outpatient Therapy	Age 0-3	0.0	0.0	21.6	3.6	6.7
	Age 4-12	0.0	0.0	109.8	203.5	77.8
	Age 13-17	0.0	0.0	271.5	423.6	173.6
	Age 18-20	0.0	0.0	82.0	131.5	53.3
	Age 21-64	0.0	0.0	142.6	183.3	81.6
	Age 65-74	0.0	0.0	4.6	7.0	2.9
Case Management	Age 0-3	0.0	0.0	0.3	1.1	0.3
	Age 4-12	0.0	0.0	10.7	23.4	8.4
	Age 13-17	0.0	0.0	13.5	26.9	10.0
	Age 18-20	0.0	0.0	50.0	100.2	37.3
	Age 21-64	0.0	0.0	337.0	471.6	202.3
	Age 65-74	0.0	0.0	35.0	19.7	13.8
	Age 75+	0.0	0.0	1.4	4.0	1.4
Supportive Day Program	Age 0-3	0.0	0.0	2.4	18.7	5.1
	Age 4-12	0.0	0.0	4.3	13.8	4.4
	Age 13-17	0.0	0.0	1.0	11.1	2.9
	Age 18-20	0.0	0.0	24.2	202.1	54.7
	Age 21-64	0.0	0.0	956.0	1459.1	603.6
	Age 65-74	0.0	0.0	313.7	495.6	202.3
	Age 75+	0.0	0.0	179.9	142.3	81.1

Data Source: MMIS Encounter and Enrollment Tables

\*Providence contract ended December 31, 2002.

\*\*Washington County MHO Agreement became effective January 1, 2003

Washington (continued)		2002		2003		Annual Average
Service Category	Age Group	3 <sup>rd</sup> Qtr	4 <sup>th</sup> Qtr	1 <sup>st</sup> Qtr	2 <sup>nd</sup> Qtr	
Medication Management	Age 4-12	0.0	0.0	16.8	30.7	11.8
	Age 13-17	0.0	0.0	46.2	79.7	31.4
	Age 18-20	0.0	0.0	25.0	45.3	17.5
	Age 21-64	0.0	0.0	110.9	181.1	72.9
	Age 65-74	0.0	0.0	27.0	28.9	14.0
	Age 75+	0.0	0.0	9.5	16.8	6.6
Consultation	Age 4-12	0.0	0.0	2.8	4.8	1.9
	Age 13-17	0.0	0.0	66.6	127.4	48.3
	Age 18-20	0.0	0.0	1.6	5.2	1.7
	Age 21-64	0.0	0.0	6.7	24.3	7.7
	Age 65-74	0.0	0.0	19.0	31.9	12.7
	Age 75+	0.0	0.0	3.2	7.7	2.7
Other - Interpretive Services	Age 4-12	0.0	0.0	0.8	1.1	0.5
	Age 21-64	0.0	0.0	6.8	13.6	5.1
	Age 65-74	0.0	0.0	5.1	1.3	1.6
	Age 75+	0.0	0.0	0.0	1.5	0.4
Alternatives to Inpatient Hosp	Age 4-12	0.0	0.0	1.8	0.1	0.5
	Age 13-17	0.0	0.0	0.0	5.5	1.3
	Age 21-64	0.0	0.0	0.5	5.3	1.4

**TABLE 7: MONTHLY AVERAGE OUTPATIENT UNITS OF SERVICE PER 1,000 BY SERVICE CATEGORIES – FFS**

Fee For Service		2002		2003		Annual Average
Service Category	Age Group	3 <sup>rd</sup> Qtr	4 <sup>th</sup> Qtr	1 <sup>st</sup> Qtr	2 <sup>nd</sup> Qtr	
Assessment & Evaluation	Age 0-3	37.2	32.7	27.7	30.7	31.8
	Age 4-12	93.3	101.2	89.0	117.4	100.6
	Age 13-17	144.1	163.5	151.3	197.0	164.6
	Age 18-20	140.8	128.3	52.3	50.3	77.2
	Age 21-64	180.3	174.1	74.4	47.7	90.5
	Age 65-74	40.5	34.7	26.1	24.9	31.8
	Age 75+	27.0	22.4	22.6	34.4	26.5
Individual Outpatient Therapy	Age 0-3	7.6	12.6	3.0	10.9	8.5
	Age 4-12	124.0	180.7	145.6	127.3	143.7
	Age 13-17	245.0	295.5	279.2	274.3	273.9
	Age 18-20	159.4	121.1	82.5	46.9	86.0
	Age 21-64	331.2	312.1	85.6	25.4	123.2
	Age 65-74	45.5	57.2	25.4	21.6	38.0
	Age 75+	21.4	17.4	14.1	17.9	17.7

Data Source: MMIS Encounter and Enrollment Tables

\*Providence contract ended December 31, 2002.

\*\*Washington County MHO Agreement became effective January 1, 2003



FFS (continued)		2002		2003		Annual Average
Service Category	Age Group	3 <sup>rd</sup> Qtr	4 <sup>th</sup> Qtr	1 <sup>st</sup> Qtr	2 <sup>nd</sup> Qtr	
Other Outpatient Therapy	Age 0-3	18.3	24.6	28.7	17.9	22.2
	Age 4-12	159.8	187.7	171.5	166.9	171.3
	Age 13-17	269.9	341.2	314.2	321.8	311.8
	Age 18-20	92.8	90.2	47.3	37.8	57.2
	Age 21-64	242.5	249.7	70.9	22.8	97.2
	Age 65-74	13.9	11.3	18.4	4.3	12.0
	Age 75+	1.3	1.9	2.8	4.6	2.6
Case Management	Age 0-3	3.2	13.3	3.6	15.5	9.3
	Age 4-12	43.4	64.3	38.4	41.0	46.4
	Age 13-17	66.2	68.6	69.3	69.4	68.4
	Age 18-20	103.1	99.9	47.6	31.8	57.9
	Age 21-64	301.7	302.4	107.3	35.8	128.4
	Age 65-74	61.4	36.8	26.7	8.9	34.0
	Age 75+	3.5	3.4	5.4	4.2	4.1
Supportive Day Program	Age 0-3	24.3	3.5	0.2	24.5	13.6
	Age 4-12	216.0	331.0	299.1	246.7	272.4
	Age 13-17	250.4	415.1	420.4	279.6	342.2
	Age 18-20	218.3	333.3	93.9	64.2	138.3
	Age 21-64	1607.8	1648.9	489.5	167.5	656.4
	Age 65-74	321.1	424.2	280.0	199.2	308.9
	Age 75+	0.0	1.0	0.4	10.9	3.0
Crisis Services	Age 13-17	0.1	0.0	0.1	0.0	0.0
	Age 18-20	0.2	0.2	0.0	0.0	0.1
	Age 21-64	0.1	0.2	0.0	0.0	0.1
Medication Management	Age 0-3	2.4	1.0	0.3	0.3	0.9
	Age 4-12	21.2	20.0	19.8	18.7	19.9
	Age 13-17	45.0	45.3	39.3	41.7	42.8
	Age 18-20	48.3	53.6	18.9	16.2	27.8
	Age 21-64	157.9	156.6	53.3	26.8	69.8
	Age 65-74	33.6	30.2	15.5	18.2	24.7
	Age 75+	4.6	4.1	3.5	4.9	4.3
Consultation	Age 0-3	4.4	3.9	5.1	1.2	3.5
	Age 4-12	14.6	22.6	19.4	17.7	18.5
	Age 13-17	22.2	29.0	23.6	30.2	26.3
	Age 18-20	19.4	11.2	3.2	3.4	7.1
	Age 21-64	18.3	14.3	4.8	2.6	7.0
	Age 65-74	5.2	3.6	2.6	4.1	3.9
	Age 75+	4.8	3.6	2.9	2.7	3.5

Data Source: MMIS Encounter and Enrollment Tables

\*Providence contract ended December 31, 2002.

\*\*Washington County MHO Agreement became effective January 1, 2003

FFS (continued)		2002		2003		Annual Average
Service Category	Age Group	3 <sup>rd</sup> Qtr	4 <sup>th</sup> Qtr	1 <sup>st</sup> Qtr	2 <sup>nd</sup> Qtr	
Family Support	Age 0-3	6.2	4.0	0.2	0.8	2.5
	Age 4-12	5.5	3.8	4.0	2.9	4.0
	Age 13-17	2.0	10.4	0.1	0.5	3.1
	Age 18-20	4.8	13.4	0.0	0.0	2.8
	Age 21-64	0.3	0.7	0.1	0.4	0.4
	Age 75+	0.0	0.0	0.0	0.0	0.0
Other Interpretive Services	Age 4-12	0.2	0.1	0.9	1.2	0.6
	Age 13-17	0.0	0.0	0.1	0.3	0.1
	Age 21-64	1.3	1.3	0.4	0.1	0.5
	Age 65-74	0.3	0.4	0.0	0.0	0.2
Alternatives to Inpatient Hospitalization	Age 4-12	0.0	0.0	0.0	0.0	0.0
	Age 21-64	0.0	0.0	0.2	0.0	0.1
Subacute Care	Age 4-12	6.6	5.7	3.8	6.3	5.6
	Age 13-17	9.8	3.5	12.4	17.3	11.0
	Age 18-20	2.5	5.3	0.8		1.4
	Age 21-64	3.7	2.4	1.6	0.2	1.4
	Age 65-74	0.0	0.0	0.0	0.3	0.1

**TABLE 7: Monthly Average Outpatient Units of Service per 1,000 in the Service Categories – All Eligibles**

All <sup>1</sup> Eligibles		2002		2003		Annual Average
Service Category	Age Group	3 <sup>rd</sup> Qtr	4 <sup>th</sup> Qtr	1 <sup>st</sup> Qtr	2 <sup>nd</sup> Qtr	
Assessment & Evaluation	Age 0-3	9.5	9.2	7.3	7.9	8.06
	Age 4-12	53.0	63.7	50.4	61.9	55.16
	Age 13-17	84.6	104.3	97.0	97.4	93.21
	Age 18-20	58.3	59.8	42.7	52.3	51.96
	Age 21-64	91.3	85.7	58.8	57.9	72.21
	Age 65-74	25.1	23.3	18.4	18.9	20.68
	Age 75+	15.7	15.0	12.0	18.5	14.75

<sup>1</sup> Eligibles: Both Enrolled and FFS

Data Source: MMIS Encounter and Enrollment Tables

\*Providence contract ended December 31, 2002.

\*\*Washington County MHO Agreement became effective January 1, 2003

All Eligibles <i>(continued)</i>		2002		2003		Annual Average
Service Category	Age Group	3 <sup>rd</sup> Qtr	4 <sup>th</sup> Qtr	1 <sup>st</sup> Qtr	2 <sup>nd</sup> Qtr	
Individual Outpatient Therapy	Age 0-3	4.6	6.5	4.9	5.0	5
	Age 4-12	126.5	160.9	130.5	150.0	136.84
	Age 13-17	239.6	286.6	264.1	292.1	263.2
	Age 18-20	120.4	123.1	96.7	100.0	107.56
	Age 21-64	280.5	271.1	174.8	155.5	217.26
	Age 65-74	46.9	48.8	30.6	41.1	40.28
	Age 75+	22.9	19.2	11.8	17.0	17.13
Other Outpatient Therapy	Age 0-3	22.5	22.8	17.4	18.2	19.25
	Age 4-12	172.3	182.3	157.7	182.0	167.33
	Age 13-17	236.5	271.0	241.6	272.8	248.33
	Age 18-20	57.6	71.9	58.8	66.0	61.96
	Age 21-64	171.0	170.7	105.2	94.3	133.35
	Age 65-74	21.3	18.3	15.7	14.9	16.94
	Age 75+	1.6	3.1	2.7	2.7	2.48
Case Management	Age 0-3	2.1	4.8	3.3	4.3	3.43
	Age 4-12	39.2	50.4	40.2	50.1	43.33
	Age 13-17	63.2	75.6	63.6	76.4	67.74
	Age 18-20	66.2	69.1	47.7	66.9	60.83
	Age 21-64	197.2	199.0	147.0	166.0	173.74
	Age 65-74	65.8	55.7	41.6	43.6	49.83
	Age 75+	14.9	14.5	9.2	11.5	12.11
Supportive Day Program	Age 0-3	16.2	22.2	11.2	12.3	14.68
	Age 4-12	90.0	110.4	100.9	110.4	99.32
	Age 13-17	115.0	143.3	128.8	141.6	128.54
	Age 18-20	91.3	102.1	54.2	67.2	76.82
	Age 21-64	939.3	985.6	711.6	693.1	817.77
	Age 65-74	426.0	472.7	363.1	397.2	399.64
	Age 75+	63.4	65.5	55.5	49.0	56.56
Crisis Services	Age 0-3	0.0	0.0	0.0	0.0	0.0
	Age 4-12	0.2	0.2	0.3	0.2	0.24
	Age 13-17	1.0	0.9	1.2	1.5	1.1
	Age 18-20	1.5	1.2	0.6	0.7	0.97
	Age 21-64	2.2	2.3	1.9	1.8	2.05
	Age 65-74	1.1	0.0	0.3	0.0	0.35
	Age 75+	0.6	0.1	0.3	0.2	0.29

Data Source: MMIS Encounter and Enrollment Tables

\*Providence contract ended December 31, 2002.

\*\*Washington County MHO Agreement became effective January 1, 2003

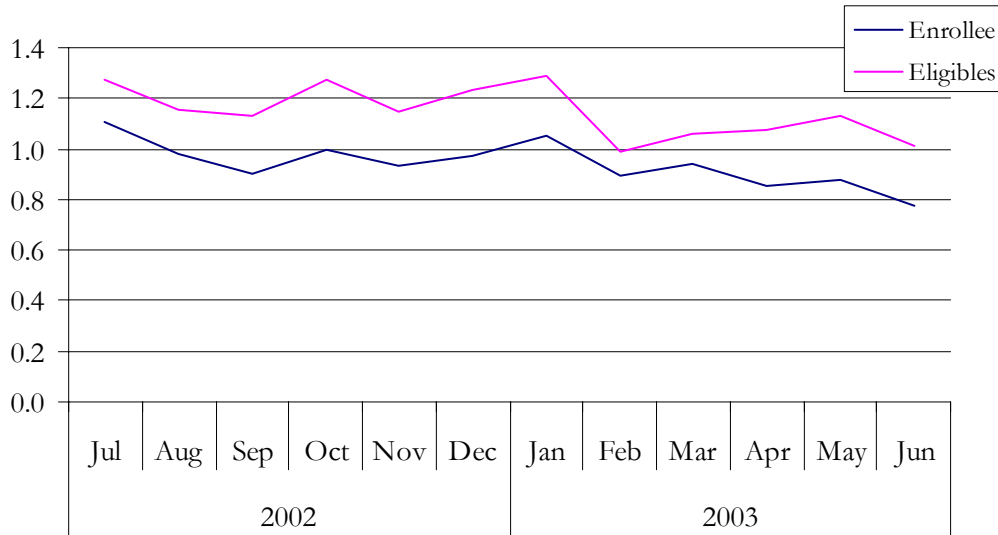
All Eligibles (continued)		2002		2003		Annual Average
Service Category	Age Group	3 <sup>rd</sup> Qtr	4 <sup>th</sup> Qtr	1 <sup>st</sup> Qtr	2 <sup>nd</sup> Qtr	
Medication Management	Age 0-3	0.5	0.6	0.2	0.6	0.45
	Age 4-12	21.6	21.9	18.9	23.8	20.79
	Age 13-17	45.3	46.0	37.7	48.8	43.12
	Age 18-20	32.9	35.0	26.9	33.0	31.14
	Age 21-64	110.3	118.2	99.0	107.4	106.44
	Age 65-74	33.8	30.8	24.7	29.7	28.66
	Age 75+	8.1	7.0	5.9	7.3	6.86
Consultation	Age 0-3	0.9	1.2	1.0	1.2	1.03
	Age 4-12	12.9	17.2	15.1	15.7	14.7
	Age 13-17	24.9	32.6	24.8	28.4	26.87
	Age 18-20	9.4	7.4	4.2	5.3	6.43
	Age 21-64	11.7	10.7	6.4	8.1	9.07
	Age 65-74	8.7	8.7	5.5	7.8	7.39
	Age 75+	6.4	5.5	4.9	3.4	4.91
Family Support	Age 0-3	1.3	1.9	0.8	2.1	1.46
	Age 4-12	20.6	20.9	11.6	11.7	15.55
	Age 13-17	25.3	27.7	12.5	20.7	20.82
	Age 18-20	4.8	5.6	3.4	1.4	3.74
	Age 21-64	14.0	18.4	22.6	48.5	24.73
	Age 65-74	2.0	2.1	7.4	12.1	5.62
	Age 75+	0.8	1.3	1.0	1.1	1
Other Interpretive Services	Age 0-3	0.0	0.0	0.4	0.0	0.1
	Age 4-12	0.5	0.3	0.8	0.6	0.55
	Age 13-17	0.4	0.2	0.4	0.2	0.29
	Age 18-20	0.1	0.2	0.2	0.3	0.19
	Age 21-64	3.4	4.3	2.7	2.8	3.27
	Age 65-74	3.1	8.7	5.8	6.2	5.73
	Age 75+	0.5	0.3	0.2	0.2	0.28
Alternatives to Inpatient Hospitalization	Age 4-12	1.6	1.9	1.3	1.2	1.45
	Age 13-17	1.9	1.7	1.6	1.5	1.61
	Age 18-20	2.5	1.7	2.0	2.5	2.15
	Age 21-64	7.8	7.1	4.9	4.3	5.95
	Age 65-74	1.0	1.3	0.5	0.2	0.75
Subacute Care	Age 4-12	0.7	0.6	0.4	0.8	0.6
	Age 13-17	1.3	0.5	1.7	2.5	1.43
	Age 18-20	0.3	0.9	0.2	0.0	0.34
	Age 21-64	0.6	0.4	0.5	0.1	0.39

Data Source: MMIS Encounter and Enrollment Tables

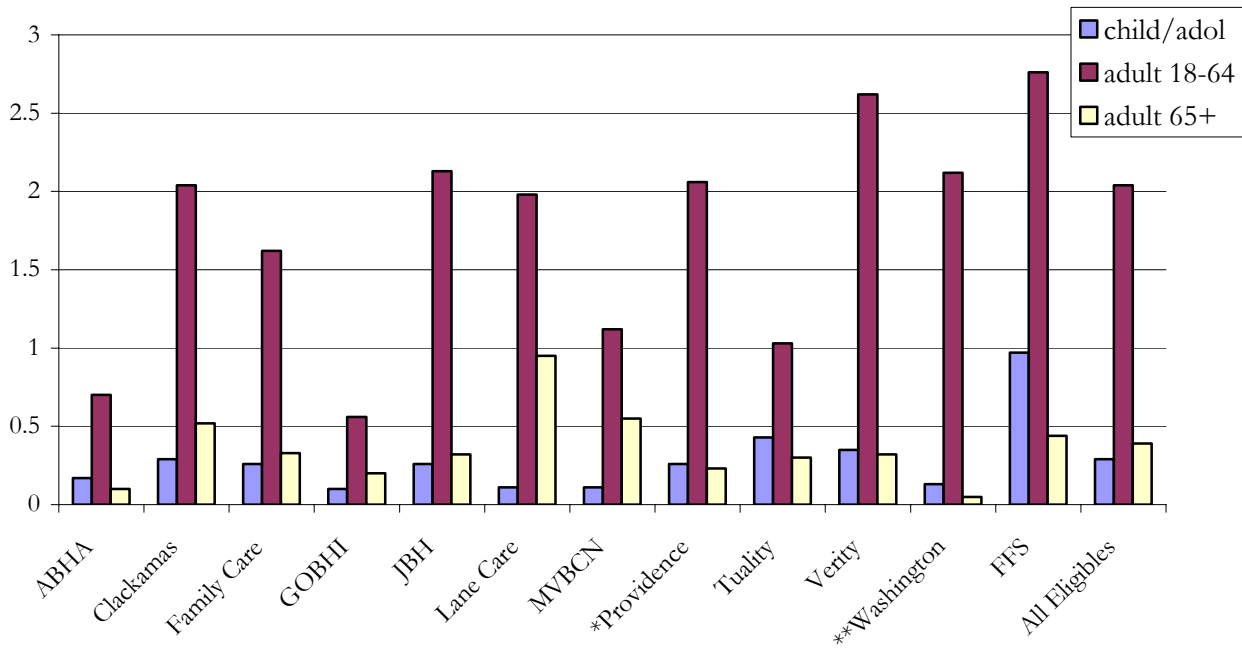
\*Providence contract ended December 31, 2002.

\*\*Washington County MHO Agreement became effective January 1, 2003

**FIGURE 6: Statewide Acute Care Hospital Admissions per 1,000 by <sup>1</sup>Enrollee & <sup>2</sup>Eligibles**



**FIGURE 7: Statewide Acute Care Hospital Admissions per 1,000 by Age Group**



<sup>1</sup> Enrollee: Eligible for OHP and enrolled in an MHO

<sup>2</sup> Eligibles: Both Enrolled and FFS

Data Source: MMIS Encounter and Enrollment Tables

\*Providence contract ended December 31, 2002.

\*\*Washington County MHO Agreement became effective January 1, 2003

**TABLE 8: Quarterly Average Acute Care Admissions per 1,000 by MHO and<sup>1</sup>FFS**

MHO/FFS	Age Group	2002		2003		Annual Average
		3 <sup>rd</sup> Qtr	4 <sup>th</sup> Qtr	1 <sup>st</sup> Qtr	2 <sup>nd</sup> Qtr	
ABHA	child/adol	0.2	0.1	0.3	0.2	0.17
	adult 18-64	0.7	0.5	0.7	1.0	0.7
	adult 65+	0.0	0.0	0.2	0.2	0.1
Clackamas	child/adol	0.1	0.3	0.4	0.4	0.29
	adult 18-64	1.7	2.3	2.1	2.1	2.04
	adult 65+	0.5	0.2	0.3	1.1	0.52
Family Care	child/adol	0.1	0.2	0.4	0.3	0.26
	adult 18-64	2.0	1.6	1.5	1.0	1.62
	adult 65+	0.0	1.4	0.0	0.0	0.33
GOBHI	child/adol	0.1	0.1	0.1	0.1	0.1
	adult 18-64	0.3	0.6	0.7	0.7	0.56
	adult 65+	0.2	0.0	0.2	0.5	0.2
JBH	child/adol	0.3	0.2	0.3	0.3	0.26
	adult 18-64	1.8	2.3	2.2	2.2	2.13
	adult 65+	0.3	0.4	0.2	0.4	0.32
Lane Care	child/adol	0.1	0.1	0.1	0.2	0.11
	adult 18-64	1.6	1.9	1.9	3.0	1.98
	adult 65+	1.3	1.7	0.4	0.4	0.95
MVBCN	child/adol	0.1	0.2	0.1	0.1	0.11
	adult 18-64	1.1	1.1	0.9	1.5	1.12
	adult 65+	0.4	0.7	0.5	0.7	0.55
*Providence	child/adol	0.5	0.4	0.1	0.0	0.26
	adult 18-64	3.3	3.8	1.1	0.0	2.06
	adult 65+	0.7	0.2	0.0	0.0	0.23
Tuality	child/adol	0.0	0.4	0.5	0.8	0.43
	adult 18-64	0.2	1.5	1.0	1.7	1.03
	adult 65+	0.0	0.0	1.1	0.0	0.3

*(Continued on page 50)*<sup>1</sup> Fee-For-Service (FFS): Eligible for OHP and NOT enrolled with an MHO (Open-Card)

Data Source: MMIS Encounter and Enrollment Tables

\*Providence contract ended December 31, 2002.

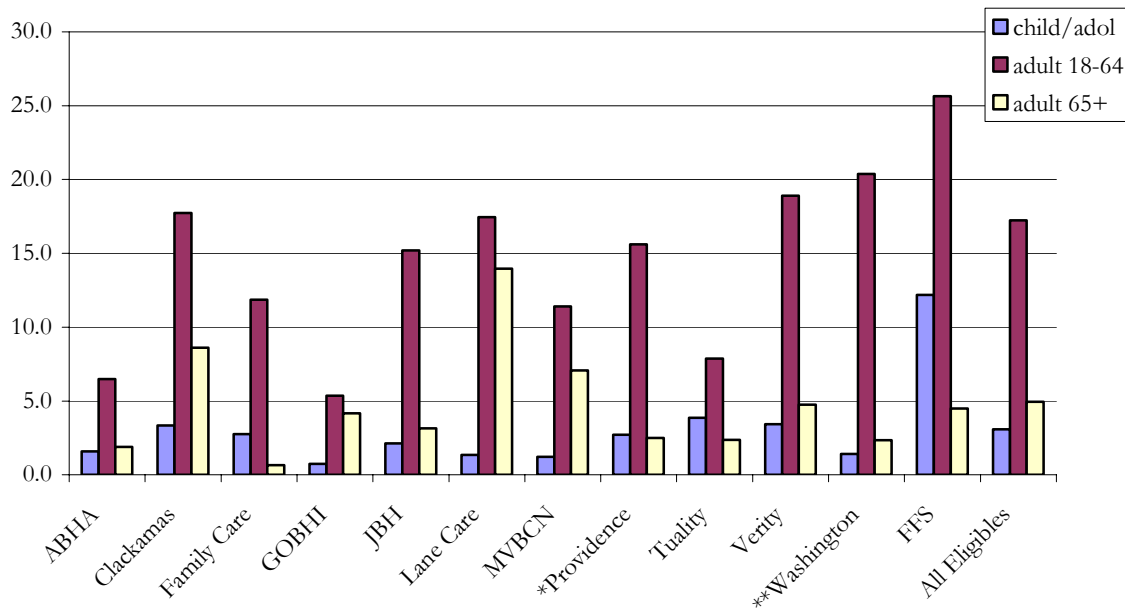
\*\*Washington County MHO Agreement became effective January 1, 2003

**TABLE 8:** (Continued from Page 49)

MHO/ <sup>1</sup> FFS	Age Group	2002		2003		Annual Average
		3 <sup>rd</sup> Qtr	4 <sup>th</sup> Qtr	1 <sup>st</sup> Qtr	2 <sup>nd</sup> Qtr	
Verity	child/adol	0.4	0.3	0.4	0.4	0.35
	adult 18-64	3.2	2.0	2.8	2.3	2.62
	adult 65+	0.2	0.6	0.5	0.1	0.32
**Washington	child/adol	0.0	0.0	0.2	0.3	0.13
	adult 18-64	0.0	0.0	4.2	4.2	2.12
	adult 65+	0.0	0.0	0.0	0.2	0.05
FFS	child/adol	1.1	1.1	0.8	0.9	0.97
	adult 18-64	4.1	5.0	2.3	1.9	2.76
	adult 65+	0.4	0.4	0.5	0.4	0.4
All Eligibles	child/adol	0.3	0.3	0.3	0.3	0.3
	adult 18-64	2.2	2.2	2.0	2.0	2.0
	adult 65+	0.4	0.5	0.4	0.4	0.4

Note: Admissions (admits) per 1,000 is calculated by dividing the total admits for acute hospital services by every 1,000 members of a group.

**FIGURE 8: Statewide Annual Average Acute Hospital Days per 1,000 by Age Group**



<sup>1</sup> Fee-For-Service (FFS): Eligible for OHP and NOT enrolled with an MHO (Open-Card)

Data Source: MMIS Encounter and Enrollment Tables

\*Providence contract ended December 31, 2002.

\*\*Washington County MHO Agreement became effective January 1, 2003

**TABLE 9: Quarterly Average Acute Care Hospital Days per 1,000 by MHO**

		2002		2003		Annual Average	
MHO/FFS	Age Group	3 <sup>rd</sup> Qtr	4 <sup>th</sup> Qtr	1 <sup>st</sup> Qtr	2 <sup>nd</sup> Qtr		
MHO Contractors	ABHA	child/adol	2.1	0.5	2.2	1.4	1.6
		adult 18-64	6.8	3.2	8.5	9.0	6.5
		adult 65+	0.0	0.0	1.9	5.9	1.9
	Clackamas	child/adol	1.5	2.6	4.1	5.1	3.3
		adult 18-64	13.1	18.7	20.4	20.7	17.7
		adult 65+	18.4	4.5	2.3	9.2	8.6
	Family Care	child/adol	1.2	3.1	4.6	2.0	2.8
		adult 18-64	10.5	13.7	11.1	12.1	11.9
	GOBHI	child/adol	0.0	2.7	0.0	0.0	0.7
		adult 18-64	0.7	0.3	1.2	0.7	0.7
		adult 65+	4.3	3.2	6.2	10.0	5.4
	JBH	child/adol	2.1	1.8	2.5	2.1	2.1
		adult 18-64	13.0	18.3	14.6	14.5	15.2
		adult 65+	3.6	2.5	2.5	4.0	3.1
	Lane Care	child/adol	0.9	0.5	1.4	2.5	1.3
		adult 18-64	14.1	15.9	18.0	25.6	17.4
		adult 65+	16.5	28.4	8.0	2.0	14.0
	MVBCN	child/adol	1.2	1.8	1.1	0.8	1.2
		adult 18-64	11.2	10.5	10.5	14.9	11.4
		adult 65+	5.0	10.7	4.7	7.9	7.1
	Providence	child/adol	4.6	5.1	1.2	0.0	2.7
		adult 18-64	25.9	28.6	7.9	0.0	15.6
		adult 65+	8.7	1.3	0.0	0.0	2.5
	Tuality	child/adol	0.0	4.3	4.9	5.8	3.9
		adult 18-64	0.9	11.7	6.2	16.8	7.9
		adult 65+	0.0	0.0	8.9	0.0	2.4
	Verity	child/adol	4.0	2.9	3.2	3.6	3.4
adult 18-64		21.3	14.4	23.2	15.8	18.9	
adult 65+		2.8	8.6	7.4	0.2	4.7	
**Washington	child/adol	0.0	0.0	2.7	2.9	1.4	
	adult 18-64	0.0	0.0	44.4	36.4	20.4	
	adult 65+	0.0	0.0	0.0	9.6	2.4	

Data Source: MMIS Encounter and Enrollment Tables

\*Providence contract ended December 31, 2002.

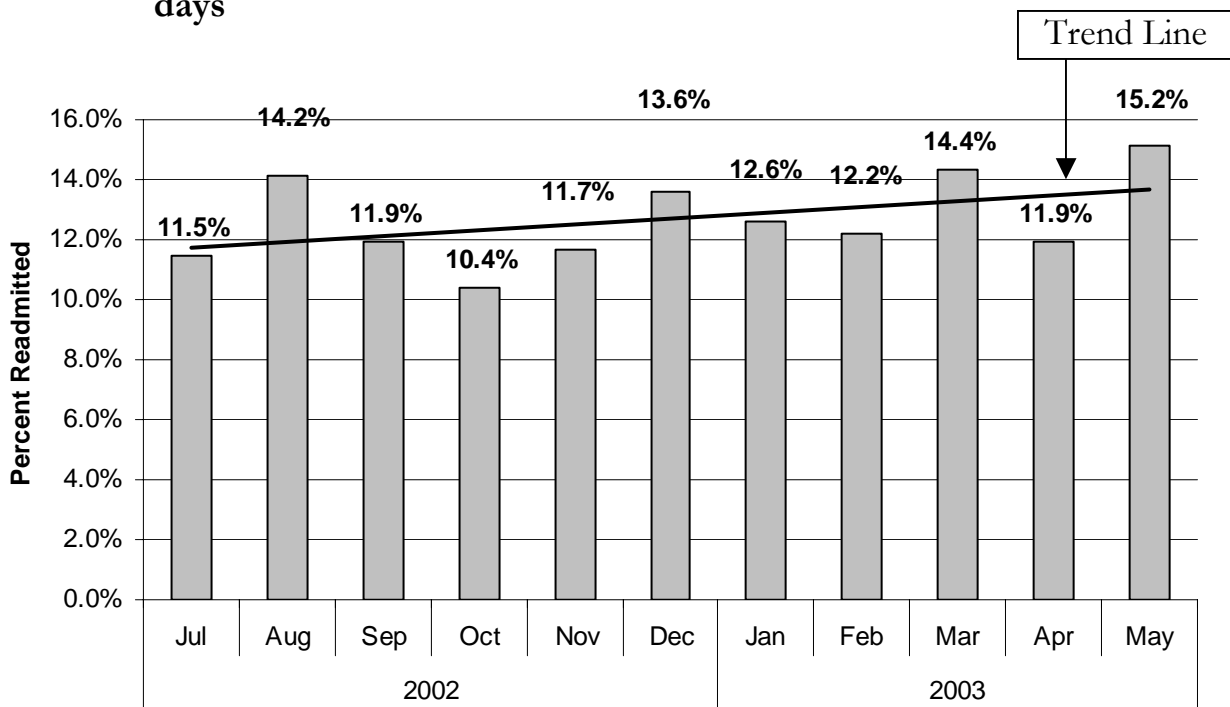
\*\*Washington County MHO Agreement became effective January 1, 2003



**Table 9:** (continued)

MHO/FFS	Age Group	2002		2003		Annual Average
		3 <sup>rd</sup> Qtr	4 <sup>th</sup> Qtr	1 <sup>st</sup> Qtr	2 <sup>nd</sup> Qtr	
FFS	child/adol	13.6	14.3	10.2	11.0	12.2
	adult 18-64	37.5	44.0	25.2	16.6	25.6
	adult 65+	5.1	3.0	4.1	5.8	4.5
All Eligibles	child/adol	3.2	3.2	3.0	3.3	3.1
	adult 18-64	17.3	18.1	18.2	16.7	17.2
	adult 65+	5.5	5.6	4.1	5.3	4.9

**FIGURE 9: Statewide Percent of <sup>1</sup>Eligibles Re-Admitted to Acute Care within 30 days**



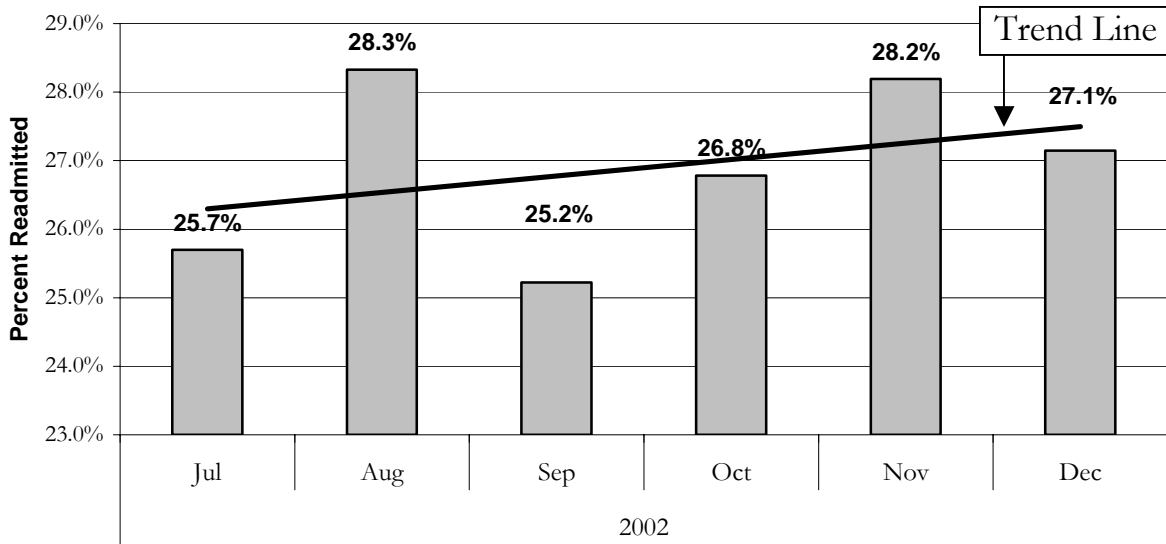
<sup>1</sup> Eligibles: Both Enrolled and FFS

Data Source: MMIS Encounter and Enrollment Tables

\*Providence contract ended December 31, 2002.

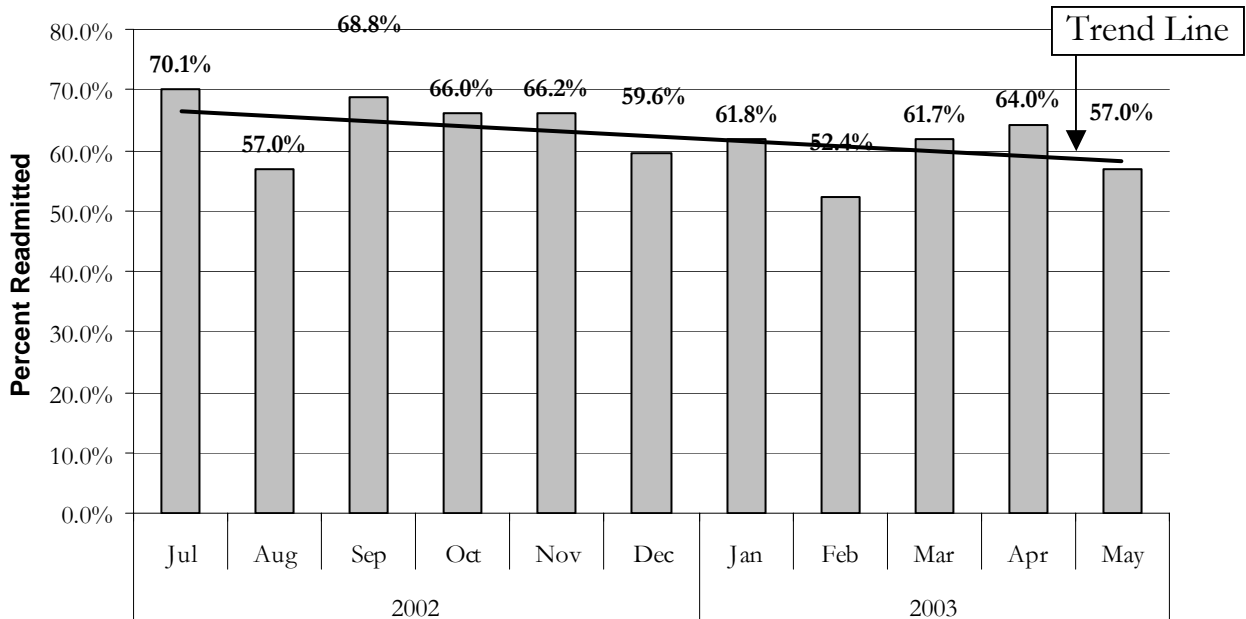
\*\*Washington County MHO Agreement became effective January 1, 2003

**FIGURE 10: Statewide Percent of Eligibles Re-Admitted to Acute Care within 180 Days**



Note: The percent readmitted within 180 days is calculated by totaling the number of readmission to acute care that occur within 180 days of discharge and dividing by the total discharges that occurred during that period of time.

**FIGURE 11: Statewide Percent of <sup>1</sup>Eligibles Seen within 7 Days of Discharge from Acute Care**



<sup>1</sup> Eligibles: Both Enrolled and FFS

Data Source: MMIS Encounter and Enrollment Tables

\*Providence contract ended December 31, 2002.

\*\*Washington County MHO Agreement became effective January 1, 2003

# MHO UTILIZATION REPORT GLOSSARY

## DIAGNOSIS CATEGORY:

Diagnosis categories are defined by the grouping of diagnoses in the most recent version of the American Psychiatric Association's Diagnostic and Statistical Manual (DSM).

## ELIGIBLE:

An individual eligible for services under the OHP, but may not be enrolled into an MHO. Includes enrolled and fee-for-service.

## ENROLLED:

Eligible for the Oregon Health Plan (OHP) and enrolled in an MHO.

## FEE-FOR-SERVICE (FFS):

Individuals who are eligible for the OHP, but are not enrolled with an MHO. This is also known as fee-for-service (FFS) or an "open card".

## FULLY CAPITATED HEALTH PLANS (FCHPs):

Prepaid Health Plans that contract with DHS to provide physical health care services under the OHP Medicaid Demonstration Project and State Children's Health Insurance Program.

## MENTAL HEALTH ORGANIZATION (MHO):

A Prepaid Health Plan under contract with DHS to provide Covered Services under the OHP Medicaid Demonstration Project and State Children's Health Insurance Program (SCHIP). MHOs can be FCHPs, CMHPs, or private MHOs or combinations thereof.

## OFFICE OF MENTAL HEALTH AND ADDICTION SERVICES (OMHAS):

The program office of DHS responsible for the administration of mental health services for the State of Oregon.

## OREGON HEALTH PLAN (OHP):

Oregon's health care reform effort consisting of a Medicaid Demonstration Project, State Children's Health Insurance Program, an individual insurance program for persons excluded from health insurance coverage due to pre-existing health conditions, and a group insurance program for small businesses. One objective

of this reform effort includes universal coverage for Oregonians. In the context of this report, OHP refers to all individuals on FFS.

PERCENT ENROLLEES SERVED:

This is a general measure of access, but more related to utilization of services. It is a percentage calculated by summing the unique enrollees seen during a given time period and dividing that number by the total enrollees for that time period. For example, if there is 10,000 enrollees statewide in a given month and during that same month 500 of those enrollees receive services, the percent of enrollees served is 5%.

SERVICE CATEGORY:

Service category is a descriptive grouping of service codes (BA, ECC, and CPT) that are similar procedurally. See Appendix A as a reference for service code categorization.

UNIT OF SERVICE:

Unit of measure for services that reference the time taken to complete the service. Each unit of service for outpatient service is a 15-minute block of time, unless noted. The unit of service for inpatient services and services classified, as an alternative to hospitalization, is one day.

UNITS OF SERVICE PER 1,000 ENROLLEES:

This is a measure of service volume that is calculated by dividing the total units of service by every 1,000 enrollees for a particular entity, such as an MHO or statewide. This creates a rate of service that is comparable across different categories and/or providers of service regardless of size.

