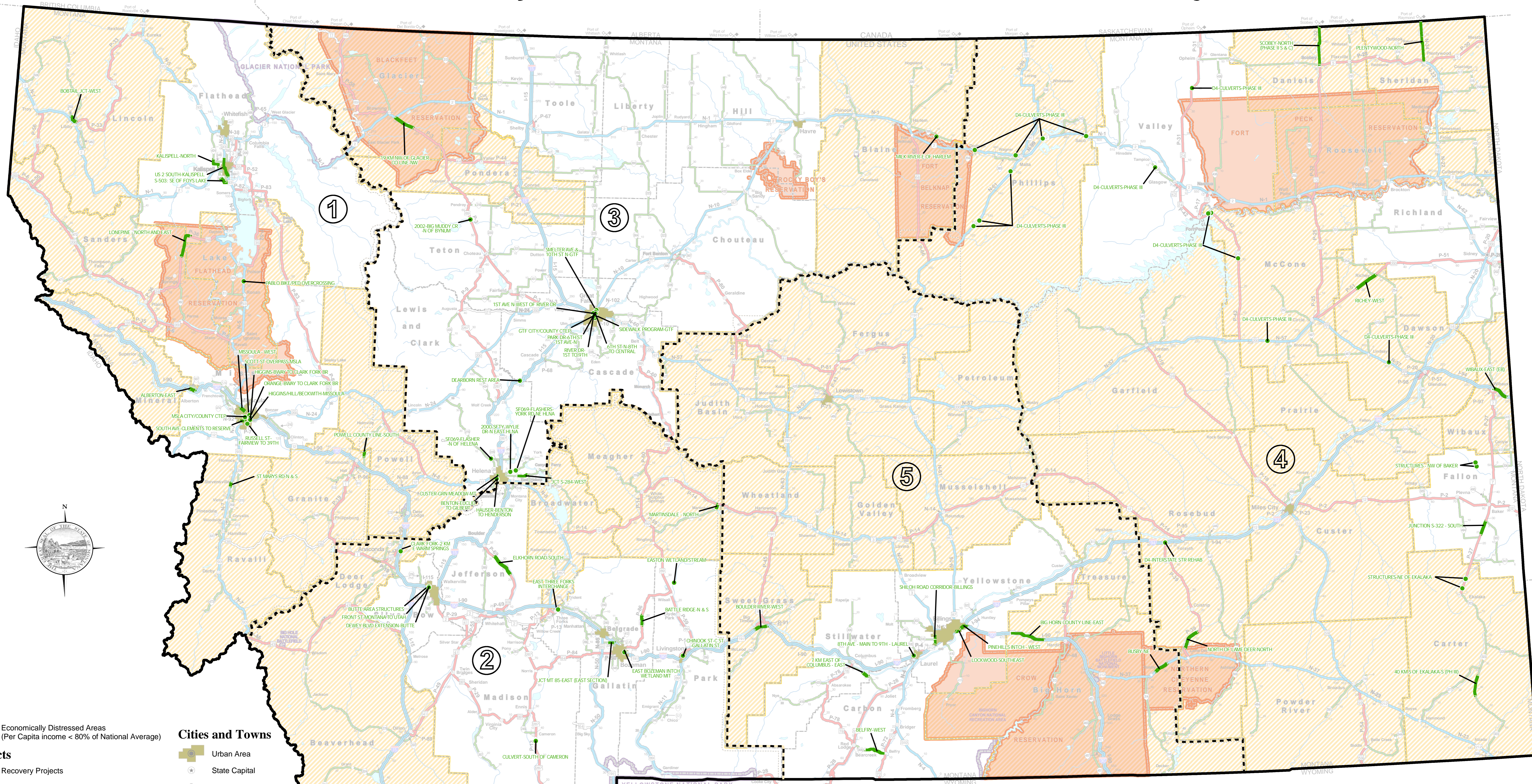


American Recovery & Reinvestment Act of 2009 Candidate Projects



- Economically Distressed Areas (Per Capita income < 80% of National Average)
- Projects**
- Recovery Projects
- System Designations**
- NHS Interstate
- NHS Non-Interstate
- Primary
- Secondary
- Off System
- Route Numbers**
- Interstate
- U.S.
- Montana
- Secondary
- Cities and Towns**
- Urban Area
- State Capital
- Incorporated City
- City / Town
- Boundaries**
- Reservation
- National Park
- Administrative District
- Financial District
- County
- Other Symbols**
- Port of Entry
- District Number

GRAND TOTAL OF RECOVERY PROJECT	\$234,700,000
Phase I	\$113,500,000
Phase II	\$121,200,000

Grand Total Estimated Recovery Jobs Supported: 6,525



PREPARED BY THE
 STATE OF MONTANA
 DEPARTMENT OF TRANSPORTATION
 ROAD INVENTORY AND MAPPING SECTION
 Created April 2009 in ArcGIS 9.3 using ArcMap. ESRI, Inc.
 NAD 1983 StatePlane Montana FIPS 2500
 Lambert Conformal Conic

