

**Department of Human Services**  
**Addictions and Mental Health Services Division**  
Child Welfare Mental Health  
Assessment and Administrative Services Utilization Report  
March 10, 2009

---

## **Introduction**

This report presents trends in proportions of children older than three who received (a) mental health assessment, (b) administrative services, and (c) total number of children who received either or both services within 60 days following their placement in substitute care. Federal and state policies require that these children receive a mental health assessment and related services within 60 days from the date of their placement in substitute care.

The mental health assessment determines treatment needs for each child. The children are then provided with appropriate treatment based on assessment results. Administrative services may be supplemental to assessment, e.g., administering psychiatric interview examinations or psychological testing, or provided on their own, e.g., interpreting and report writing.

Chart 1 shows the proportion of children older than 3 who received mental health assessments, administrative services or total number of children who received either or both services within the required time frame over the 19-quarter period, 10/1/2003 to 6/30/2008. Only children older than 3 years old are subject to the mental health assessment requirement.

## **Method**

Child Welfare Program (CWP) provides the quarterly list of children taken into state custody and stayed in the program for at least 60 days. The file includes, among others, child identifier code, date of birth and dates on which the children were placed in substitute care.

Each child is then matched with claims records from the Medicaid Management Information System (MMIS) using the unique child identifier code. Mental health assessment and administrative services are identified using appropriate diagnoses, Common Procedure Coding System (HCPCS), or Current Procedural Terminology (CPT) codes.<sup>1</sup>

## **Results**

Chart 1 shows the proportion of children older than three who received mental health assessment, administrative services or total number of children who received either or both services within 60 days from their placement in substitute care over the period October 2003 to June 2008.

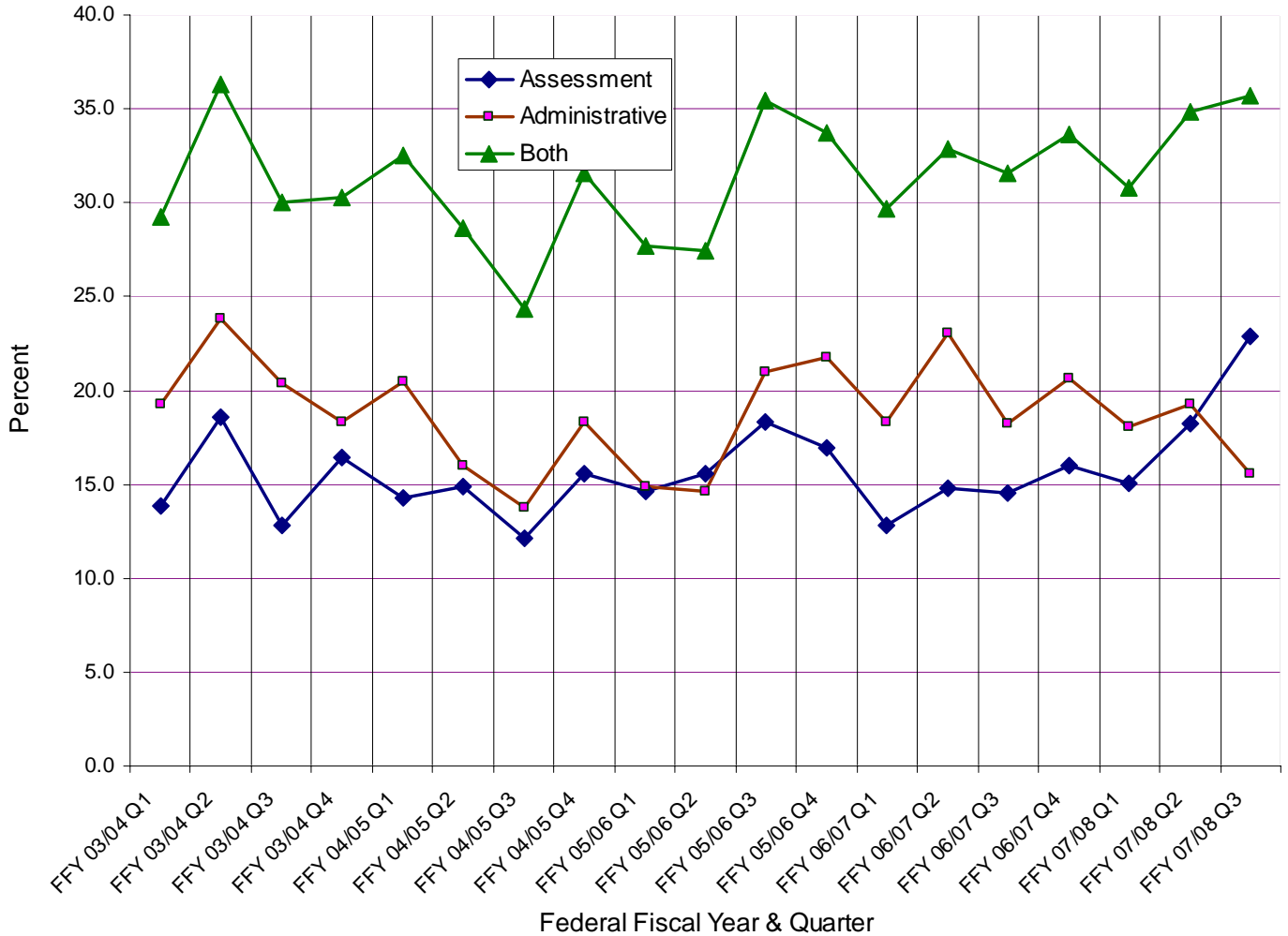
Over the 19-quarter analysis period, about one-third of children (31.5%) placed in substitute care received either or both services. One in every six children (15.8%) received mental health assessment while close to one in every five children (19.0%) received administrative services.

Proportionately more children (22.9%) were assessed for mental health in the third quarter (April – June, 2008) of the federal fiscal year 2007//2008. This represents about a 21% increase over the proportion (19.0%) in the preceding quarter (January to March 2008). The use of either or both assessment and administrative services during the third quarter of 2007/08 was the second highest at 35.7% during the 19-quarter period. Proportionately more children were served in the second quarter of the federal fiscal year 2003/2004 than any other quarter.

---

<sup>1</sup> See Attachment 1 for list and description of diagnoses, HCPCS, and CPT codes

Chart 1. Percent of Children Older Than 3 Who Received Mental Health Assessment within 60 days Following DHS Custody Report for the Period 10/1/2003 to 6/30/2008



## Service Utilization by County

Tables 1 through 3 show numbers and percentages of children who received either or both services during the first three quarters of the FFY 2007/2008.

Percent of Children Older Than 3 Who Received Mental Health Assessment Services within 60 Days Following DHS Custody Addictions and Mental Health Division Department of Human Services First Quarter of 2007/2008

County	Number of Children					Percent of Children Older Than Who Received MH Assessment *					
	Taken into Custody		Who Received:			FFY 2007/08 Quarter 1			FFY 2006/07 Quarter 1		
	Total	>3	Assess	Admin	Total**	Assess	Admin	Total	Assess	Admin	Total
Baker	4	3	0	0	0	0.0	0.0	0.0	0.0	0.0	0.0
Benton	1	1	0	0	0	0.0	0.0	0.0	0.0	0.0	0.0
Clackamas	16	12	2	3	5	16.7	25.0	41.7	16.7	20.0	33.3
Clatsop	12	8	1	1	1	12.5	12.5	12.5	0.0	10.0	10.0
Columbia	23	18	1	0	1	5.6	0.0	5.6	0.0	25.0	25.0
Coos	27	16	6	0	6	37.5	0.0	37.5	65.0	5.0	65.0
Crook	3	3	0	2	1	0.0	66.7	33.3	0.0	0.0	0.0
Curry	7	5	0	1	0	0.0	20.0	0.0	0.0	75.0	75.0
Deschutes	19	13	1	1	1	7.7	7.7	7.7	16.7	66.7	83.3
Douglas	45	31	0	6	6	0.0	19.4	19.4	0.0	35.7	35.7
Gilliam	1	1	0	0	0	0.0	0.0	0.0	0.0	0.0	0.0
Grant	1	0	na	na	na	na	na	na	0.0	25.0	25.0
Harney	1	1	1	0	1	100.0	0.0	100.0	na	na	na
Hood River	1	1	0	0	0	0.0	0.0	0.0	0.0	0.0	0.0
Jackson	47	27	0	9	9	0.0	33.3	33.3	3.8	23.1	25.0
Jefferson	3	3	1	3	3	33.3	100.0	100.0	0.0	100.0	100.0
Josephine	21	17	4	3	7	23.5	17.6	41.2	12.5	0.0	12.5
Klamath	29	20	1	11	11	5.0	55.0	55.0	7.7	53.8	61.5
Lake	4	4	0	1	1	0.0	25.0	25.0	0.0	0.0	0.0
Lane	75	38	2	17	17	5.3	44.7	44.7	3.5	40.4	43.9
Lincoln	9	7	0	2	2	0.0	28.6	28.6	0.0	66.7	66.7
Linn	49	28	10	3	12	35.7	10.7	42.9	22.7	4.5	27.3
Malheur	21	13	5	0	5	38.5	0.0	38.5	13.3	6.7	20.0
Marion	187	123	13	15	26	10.6	12.2	21.1	5.5	16.5	18.7
Morrow	3	1	0	0	0	0.0	0.0	0.0	100.0	0.0	100.0
Multnomah	190	124	32	15	44	25.8	12.1	35.5	18.3	15.3	32.1
Polk	42	27	4	9	13	14.8	33.3	48.1	0.0	14.3	14.3
Sherman	1	1	0	0	0	0.0	0.0	0.0	na	na	na
Tillamook	3	1	0	1	1	0.0	100.0	100.0	0.0	0.0	0.0
Umatilla	13	10	1	0	1	10.0	0.0	10.0	0.0	14.3	14.3
Union	3	0	na	na	na	na	na	na	0.0	0.0	0.0
Wallowa	2	2	2	0	2	100.0	0.0	100.0	na	na	na
Wasco	7	4	1	0	1	25.0	0.0	25.0	40.0	0.0	40.0
Washington	105	74	7	12	18	9.5	16.2	24.3	8.7	8.7	15.2
Wheeler	0	0	na	na	na	na	na	na	na	na	na
Yamhill	6	5	2	1	3	40.0	20.0	60.0	50.0	0.0	50.0
Tribes	3	1	0	0	0	0	0	0	14.3	14.3	28.6
State Total	984	643	97	116	198	15.1	18.0	30.8	12.8	18.3	29.7

Berhanu: Data pulled from DSSURS in January 2009

\* na means not applicable for there were no children 3 or older taken into custody in the county

\*\* This column shows the unduplicated number of children who received either or both services

Percent of Children Older Than 3 Who Received Mental Health Administrative  
Services within 60 Days Following DHS Custody  
Addictions and Mental Health Division  
Department of Human Services  
Second Quarter of FFY 2007/2008

County	Number of Children					Percent of Children Older Than 3 Who Received MH Assessment *					
	Taken into Custody		Who Received:			FFY 2007/08 Quarter 2			FFY 2006/07 Quarter 2		
	Total	>3	Assess	Admin	Total**	Assess	Admin	Total	Assess	Admin	Total
Baker	5	4	1	0	1	25.0	0.0	25.0	0.0	100.0	100.0
Benton	12	8	2	5	5	25.0	62.5	62.5	20.0	0.0	20.0
Clackamas	36	26	1	10	11	3.8	38.5	42.3	3.3	33.3	36.7
Clatsop	3	0	na	na	na	na	na	na	0.0	0.0	0.0
Columbia	9	7	2	0	2	28.6	0.0	28.6	50.0	12.5	62.5
Coos	44	29	12	3	13	41.4	10.3	44.8	36.8	15.8	42.1
Crook	2	2	0	0	0	0.0	0.0	0.0	0.0	0.0	0.0
Curry	4	3	0	0	0	0.0	0.0	0.0	7.7	53.8	53.8
Deschutes	8	5	1	1	2	20.0	20.0	40.0	18.2	0.0	18.2
Douglas	25	16	0	11	11	0.0	68.8	68.8	0.0	23.8	23.8
Gilliam	1	1	0	0	0	0.0	0.0	0.0	100.0	0.0	100.0
Grant	0	0	na	na	na	na	na	na	na	na	na
Harney	3	2	0	2	2	0.0	100.0	100.0	na	na	na
Hood River	7	4	3	1	3	75.0	25.0	75.0	66.7	66.7	66.7
Jackson	55	32	0	8	8	0.0	25.0	25.0	2.3	25.6	27.9
Jefferson	11	8	2	1	2	25.0	12.5	25.0	33.3	0.0	33.3
Josephine	26	16	0	1	1	0.0	6.3	6.3	35.3	11.8	35.3
Klamath	29	22	2	9	11	9.1	40.9	50.0	29.2	50.0	66.7
Lake	0	0	na	na	na	na	na	na	0.0	0.0	0.0
Lane	96	64	2	25	26	3.1	39.1	40.6	1.3	42.5	42.5
Lincoln	8	3	0	1	1	0.0	33.3	33.3	22.2	55.6	55.6
Linn	30	20	5	2	6	25.0	10.0	30.0	20.0	10.0	22.5
Malheur	11	6	1	0	1	16.7	0.0	16.7	18.2	0.0	18.2
Marion	174	123	21	14	33	17.1	11.4	26.8	11.3	24.2	32.3
Morrow	3	2	1	0	1	50.0	0.0	50.0	0.0	0.0	0.0
Multnomah	186	120	33	16	44	27.5	13.3	36.7	20.7	13.8	28.3
Polk	30	21	3	6	8	14.3	28.6	38.1	25.0	36.1	50.0
Sherman	0	0	na	na	na	na	na	na	na	na	na
Tillamook	4	2	0	0	0	0.0	0.0	0.0	na	na	na
Umatilla	21	14	0	0	0	0.0	0.0	0.0	6.3	12.5	18.8
Union	2	1	0	0	0	0.0	0.0	0.0	0.0	100.0	100.0
Wallowa	1	1	0	1	1	0.0	100.0	100.0	0.0	0.0	0.0
Wasco	7	7	1	2	2	14.3	28.6	28.6	100.0	0.0	100.0
Washington	75	48	12	2	14	25.0	4.2	29.2	12.7	21.8	25.5
Wheeler	0	0	na	na	na	na	na	na	na	na	na
Yamhill	23	18	10	1	11	55.6	5.6	61.1	50.0	0.0	50.0
Tribes	0	0	na	na	na	na	na	na	0.0	0.0	0.0
State Total	947	632	115	122	220	18.2	19.3	34.8	14.8	23.0	32.9

Berhanu: Data pulled from DSSURS in January 2009

\* na means not applicable for there were no children 3 or older taken into custody in the county

\*\* This column shows the unduplicated number of children who received either or both services

Percent of Children Older Than 3 Who Received Mental Health Assessment or Administrative Services within 60 Days Following DHS Custody Addictions and Mental Health Division  
Department of Human Services  
Third Quarter of FFY 2007/2008

County	Number of Children					Percent of Children Older Than 3 Who Received MH Assessment *					
	Taken into Custody		Who Received:			FFY 2007/08 Quarter 3			FFY 2006/07 Quarter 3		
	Total	>3	Assess	Admin	Total**	Assess	Admin	Total	Assess	Admin	Total
Baker	4	2	1	1	1	50.0	50.0	50.0	na	na	na
Benton	6	3	0	0	0	0.0	0.0	0.0	50.0	0.0	50.0
Clackamas	38	28	7	7	14	25.0	25.0	50.0	20.7	17.2	37.9
Clatsop	8	3	0	0	0	0.0	0.0	0.0	25.0	37.5	50.0
Columbia	10	8	3	1	4	37.5	12.5	50.0	28.6	4.8	33.3
Coos	33	22	2	3	4	9.1	13.6	18.2	50.0	0.0	50.0
Crook	0	0	na	na	na	na	na	na	na	na	na
Curry	0	0	na	na	na	na	na	na	na	na	na
Deschutes	22	12	7	2	8	58.3	16.7	66.7	14.3	14.3	28.6
Douglas	27	13	0	9	9	0.0	69.2	69.2	0.0	13.3	13.3
Gilliam	1	0	na	na	na	na	na	na	na	na	na
Grant	0	0	na	na	na	na	na	na	na	na	na
Harney	1	1	0	0	0	0.0	0.0	0.0	na	na	na
Hood River	3	3	0	1	1	0.0	33.3	33.3	0.0	100.0	100.0
Jackson	67	43	0	3	3	0.0	7.0	7.0	2.9	17.6	17.6
Jefferson	22	15	2	1	3	13.3	6.7	20.0	66.7	0.0	66.7
Josephine	20	13	0	0	0	0.0	0.0	0.0	40.0	0.0	40.0
Klamath	29	16	4	6	7	25.0	37.5	43.8	0.0	63.6	63.6
Lake	9	8	6	0	6	75.0	0.0	75.0	na	na	na
Lane	130	82	1	23	23	1.2	28.0	28.0	0.0	37.1	37.1
Lincoln	11	6	0	3	3	0.0	50.0	50.0	0.0	50.0	50.0
Linn	52	39	20	6	23	51.3	15.4	59.0	14.3	11.9	23.8
Malheur	5	1	1	0	1	100.0	0.0	100.0	36.4	0.0	36.4
Marion	177	120	32	10	41	26.7	8.3	34.2	11.5	30.2	37.5
Morrow	5	5	0	0	0	0.0	0.0	0.0	0.0	100.0	100.0
Multnomah	218	123	34	11	43	27.6	8.9	35.0	23.4	6.3	28.9
Polk	36	23	11	9	18	47.8	39.1	78.3	9.1	0.0	9.1
Sherman	9	7	0	0	0	0.0	0.0	0.0	0.0	0.0	0.0
Tillamook	3	2	1	0	1	50.0	0.0	50.0	0.0	100.0	100.0
Umatilla	8	5	2	0	2	40.0	0.0	40.0	14.3	14.3	28.6
Union	9	3	2	0	2	66.7	0.0	66.7	100.0	0.0	100.0
Wallowa	0	0	na	na	na	na	na	na	0.0	0.0	0.0
Wasco	9	7	1	0	1	14.3	0.0	14.3	22.2	0.0	22.2
Washington	105	68	15	11	22	22.1	16.2	32.4	3.7	22.2	25.9
Wheeler	0	0	na	na	na	na	na	na	na	na	na
Yamhill	16	13	7	1	8	53.8	7.7	61.5	30.0	5.0	35.0
Tribes	0	0	na	na	na	na	na	na	0.0	0.0	0.0
State Total	1,093	694	159	108	248	22.9	15.6	35.7	14.6	18.2	31.5

Berhanu: Data pulled from DSSURS in January 2009

\* na means not applicable for there were no children 3 or older taken into custody in the county

\*\* This column shows the unduplicated number of children who received either or both services

## Code Chart

No	Code	Descriptions
<b>Mental Health Assessment</b>		
1	H0031	Mental Health/Clinical Assessment by Non-Physicians
2	H1011	Family Assessment by licensed behavioral health professional
<b>Administrative Services</b>		
1	V6889	Diagnosis code Used for billing for administrative encounters
2	90801	Psychiatric diagnostic interview examination
3	90802	Interactive psychiatric diagnostic interview examination using play equipment
4	90889	Preparation of report of patient's psychiatric status, history, treatment, or progress for purposes other than legal or consultative functions.
5	96100	Psychological testing with interpretation and report hourly – discontinued in 2003
6	96101 96102	Psychological testing including psycho-diagnostic assessment of emotionality, intellectual ability, personality and psychopathology, i.e. MMPI. Etc. – administering and interpreting
7	96110	Developmental testing limited (e.g. developmental screening test II-early language milestone screen) interpretation and report
8	96111	Developmental testing extended (e.g. assessment of motor, language, social, adaptive and/or cognitive functioning by standard developmental instruments with interpretation and report)
9	99080	Special reports on issues supplemental to the basic service
10	S9981	Medical records copying fee, administrative
	S9982	Medical records copying fee, per page charge

*Note: More than 99% of mental health assessment services are identified with Health Common Procedure Coding System (HCPCS) code H0031 (Mental Health clinical assessment by non-physician). The balance of assessment services are identified with H1011 (Family assessment by licensed behavioral health professional).*

*Over the 17 quarter period (October 2003 to December 2007), 89.6% of Administrative services were identified with diagnosis code V6889 (60.4%) and current procedural terminology (CPT) code 90801 (29.3%).*