

FRITZ SCHOLDER

indian
not indian

Smithsonian's National Museum of the American Indian

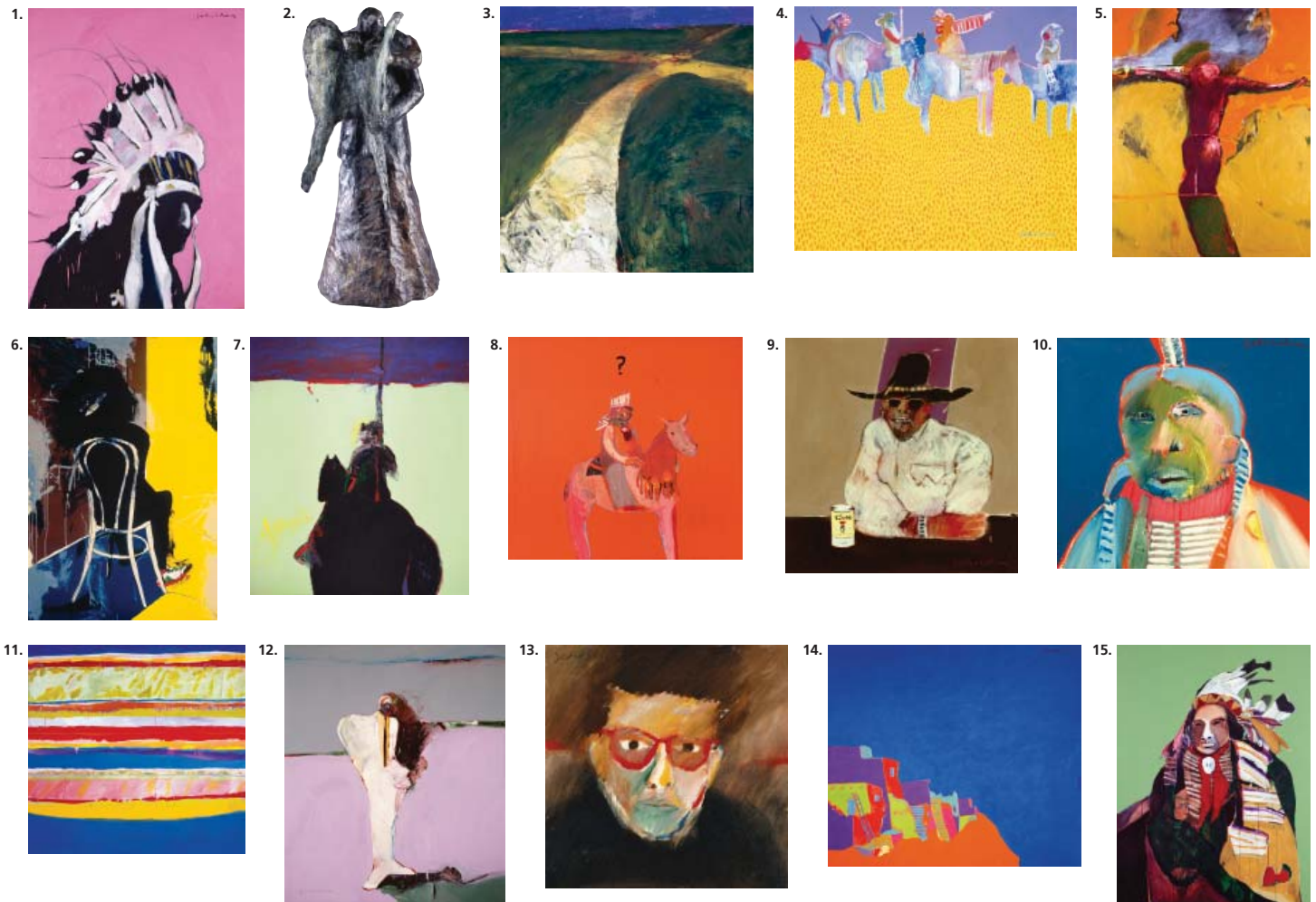
The following images are for media, publicity and promotion of "Fritz Scholder: Indian/Not Indian" only. The exhibition is on view simultaneously at the George Gustav Heye Center (GGHC) in New York City from November 1, 2008, through May 17, 2009, and at the museum on the National Mall in Washington, D.C., from November 1, 2008, through August 16, 2009. Any reproduction of these images must include full caption information. Any reproduction of all or part of the images for other purposes (i.e., to illustrate non-exhibition-related stories or for commercial sale in any regard) is strictly prohibited. High-resolution images may be downloaded from ftp.si.edu. Call (202) 633-6985 for username and password. High-resolution images may not be used on Web sites without prior permission. For use on the Internet, please use 72 dpi images.

Additional information about the exhibition is available at:

<http://www.nmai.si.edu/subpage.cfm?subpage=exhibitions&second=dc&third=upcoming>.

Washington, DC

November 1, 2008–August 16, 2009



1. *American Indian*
N.D.
Oil on canvas
40 x 30 inches
Collection of the Fred Jones Jr. Museum of Art,
The University of Oklahoma, Norman, Okla.
Purchase, Richard H. and Adeline J. Fleischaker Collection, 1996.
(1996.017.132)
2. *Another Vampire Kissing Fallen Angel*
1997
Bronze
26 x 13 x 13 inches
Collection of the Estate of Fritz Scholder
Photo by Hugh Talman, NMAH
3. *Crossroads*
1992
Acrylic on canvas
50 x 50 inches
Collection of Wayne and Catherine Reynolds
Photo by Walter Larrimore, NMAI
4. *Four Indian Riders*
1967
Oil on canvas
60 x 72 inches
Collection of Mr. and Mrs. William Metcalf
Photo by Walter Larrimore, NMAI
5. *Human in Nature No. 7*
1990
Acrylic on canvas
80 x 68 inches
Collection of the Estate of Fritz Scholder

6. *Indian Contemplating Columbus*
1992
Lithograph
59.5 x 40 inches
Collection of the Estate of Fritz Scholder
Photo by Bill McLemore
7. *Indian Land No. 4*
1980
Acrylic on canvas
80 x 68 inches
Collection of Romona Scholder
Photo by Richard Strauss, NMAH
8. *Indian No. 16*
1967
Oil on canvas
71 x 71 inches
Collection of Robert E. Herzstein
9. *Indian with Beer Can*
1969
Oil on canvas
24 x 24 inches
Collection of Ralph and Ricky Lauren
Photo by Bill McLemore
10. *Monster Indian*
1968
Oil on canvas
18 x 20 inches
Collection of Loren and Anne Kieve

11. *New Mexico #1*
1964
Oil on canvas
60 x 60 inches
Collection of the Estate of Fritz Scholder
Photo by Hugh Talman, NMAH
12. *Portrait with White Suit*
1983
Oil on canvas
80 x 68 inches
Collection of the Albuquerque Museum
13. *Self Portrait at 28*
1965
Oil on canvas
16 x 16 inches
Collection of the Estate of Fritz Scholder
14. *Super Pueblo*
1968
Acrylic on canvas
73 x 83 inches
Collection of the Bureau of Indian Affairs Museum Program
Photo by Walter Larrimore, NMAI
15. *Heart Indian*
2004
Acrylic on canvas
48 x 36 inches
Collection of the Estate of Fritz Scholder
Photo by Hugh Talman, NMAH



Smithsonian
National Museum of the American Indian

FRITZ SCHOLDER

indian not indian

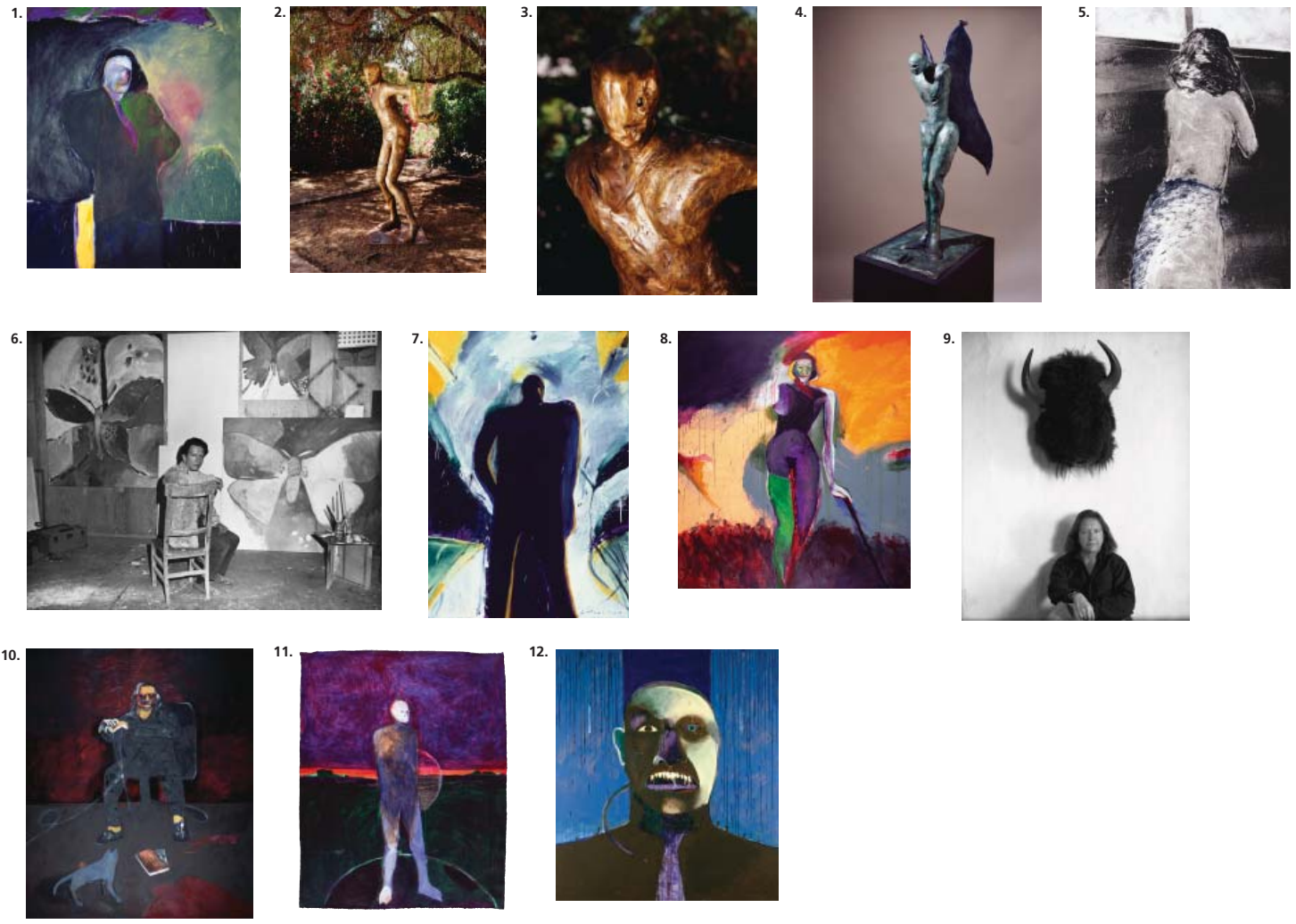
Smithsonian's National Museum of the American Indian

The following images are for media, publicity and promotion of "Fritz Scholder: Indian/Not Indian" only. The exhibition is on view simultaneously at the George Gustav Heye Center (GGHC) in New York City from November 1, 2008, through May 17, 2009, and at the museum on the National Mall in Washington, D.C., from November 1, 2008, through August 16, 2009. Any reproduction of these images must include full caption information. Any reproduction of all or part of the images for other purposes (i.e., to illustrate non-exhibition-related stories or for commercial sale in any regard) is strictly prohibited. High-resolution images may be downloaded from ftp.si.edu. Call (202) 633-6985 for username and password. High-resolution images may not be used on Web sites without prior permission. For use on the Internet, please use 72 dpi images.

Additional information about the exhibition is available at: <http://www.nmai.si.edu/subpage.cfm?subpage=exhibitions&second=ny&third=upcoming>.

New York

November 1, 2008–May 17, 2009



1. *American Portrait No. 46*
1982
Oil on canvas
80 x 68 inches
Collection of the Estate of Fritz Scholder
Photo by Hugh Talman

2. *Another Martyr No. 1*
1993
Bronze
66 x 31 x 28 inches
Collection of the Estate of Fritz Scholder

3. *Another Martyr No. 1 (detail)*
1993
Bronze
66 x 31 x 28 inches
Collection of the Estate of Fritz Scholder

4. *Another Possession*
1989
Bronze
46 x 15 x 21 inches
Collection of the Estate of Fritz Scholder

5. *Bending Over No. 2*
1990
Monotype
30 x 22 inches
Collection of the Estate of Fritz Scholder

6. Fritz Scholder in his studio on West Alameda Street in Santa Fe, New Mexico, seated in front of several of his butterfly paintings, ca. 1966.
Photo courtesy of Romona Scholder

7. *Human in Nature No. 18*
1991
Oil on canvas
50 x 35 inches
Collection of Romona Scholder

8. *Lilith No. 1*
1992
Oil on canvas
80 x 68 inches
Collection of the Estate of Fritz Scholder

9. *Fritz Scholder with buffalo head, Taos, New Mexico, 1977.*
Photo courtesy of Meridel Rubenstein

10. *Self Portrait with Grey Cat*
2003
Acrylic on canvas
80 x 68 inches
Collection of the Estate of Fritz Scholder

11. *The Border No. 7*
1992
Acrylic on paper
40.5 x 31 inches
Collection of Romona Scholder

12. *Purgatory*
1996
Acrylic, oil, and collage on canvas
80 x 68 inches
Collection of the Estate of Fritz Scholder
Photo by Bill McLemore