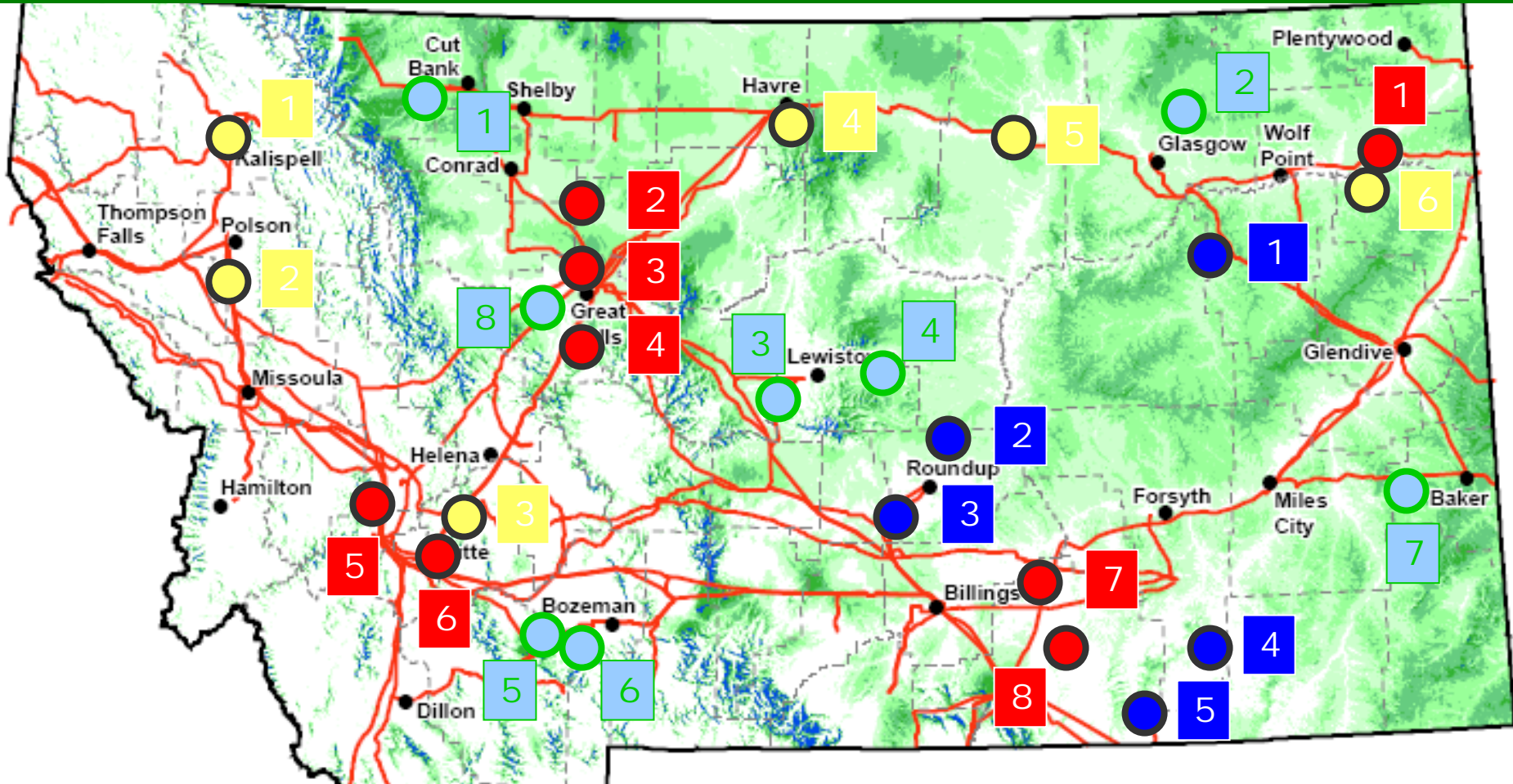


# Montana Energy means Montana Jobs

## Projects since 2005



● Power Plant Activity

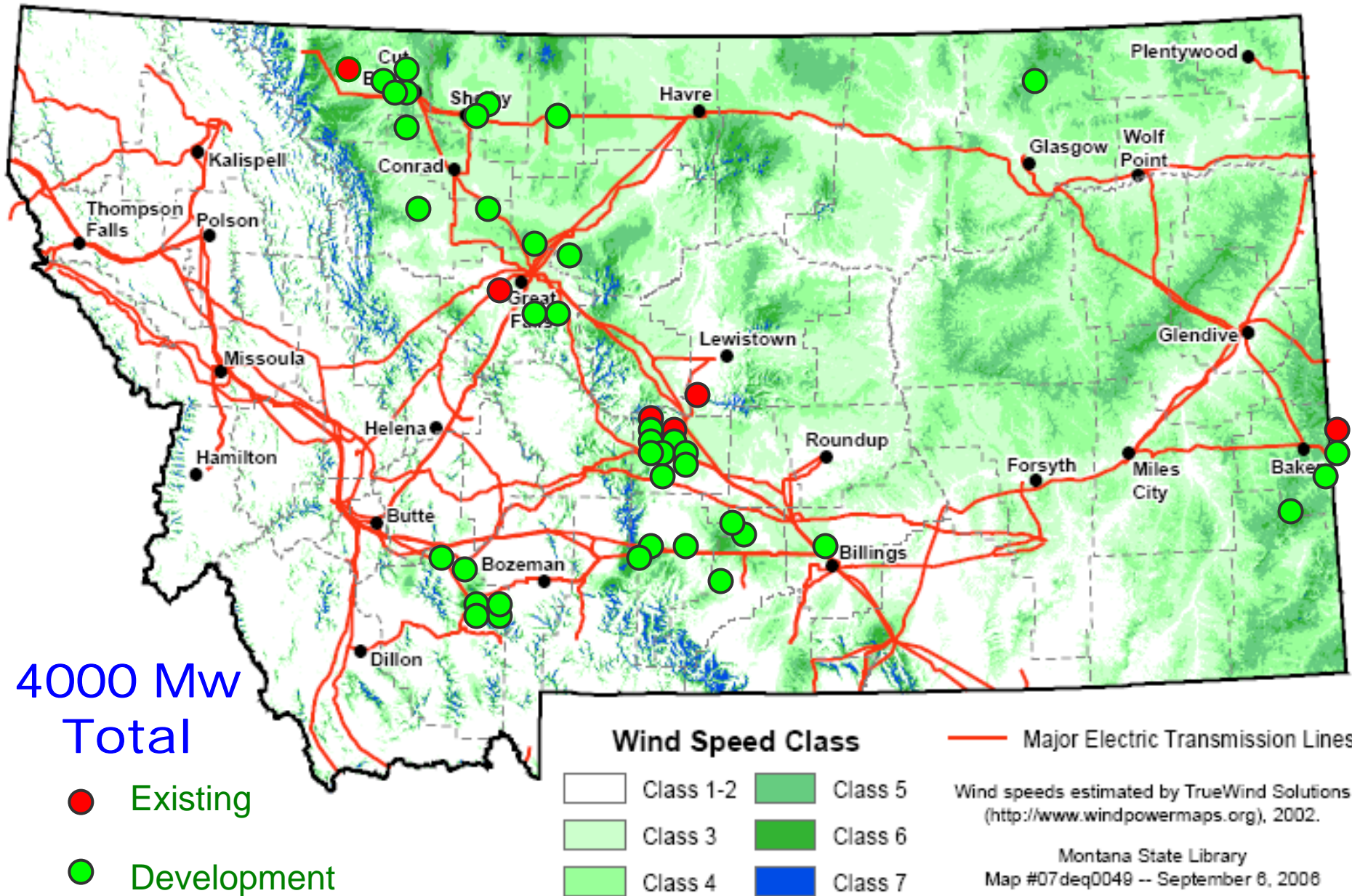
● Bio-Fuels Activity

● Wind Generation Activity

● New or Expanded Coal Mine Activity

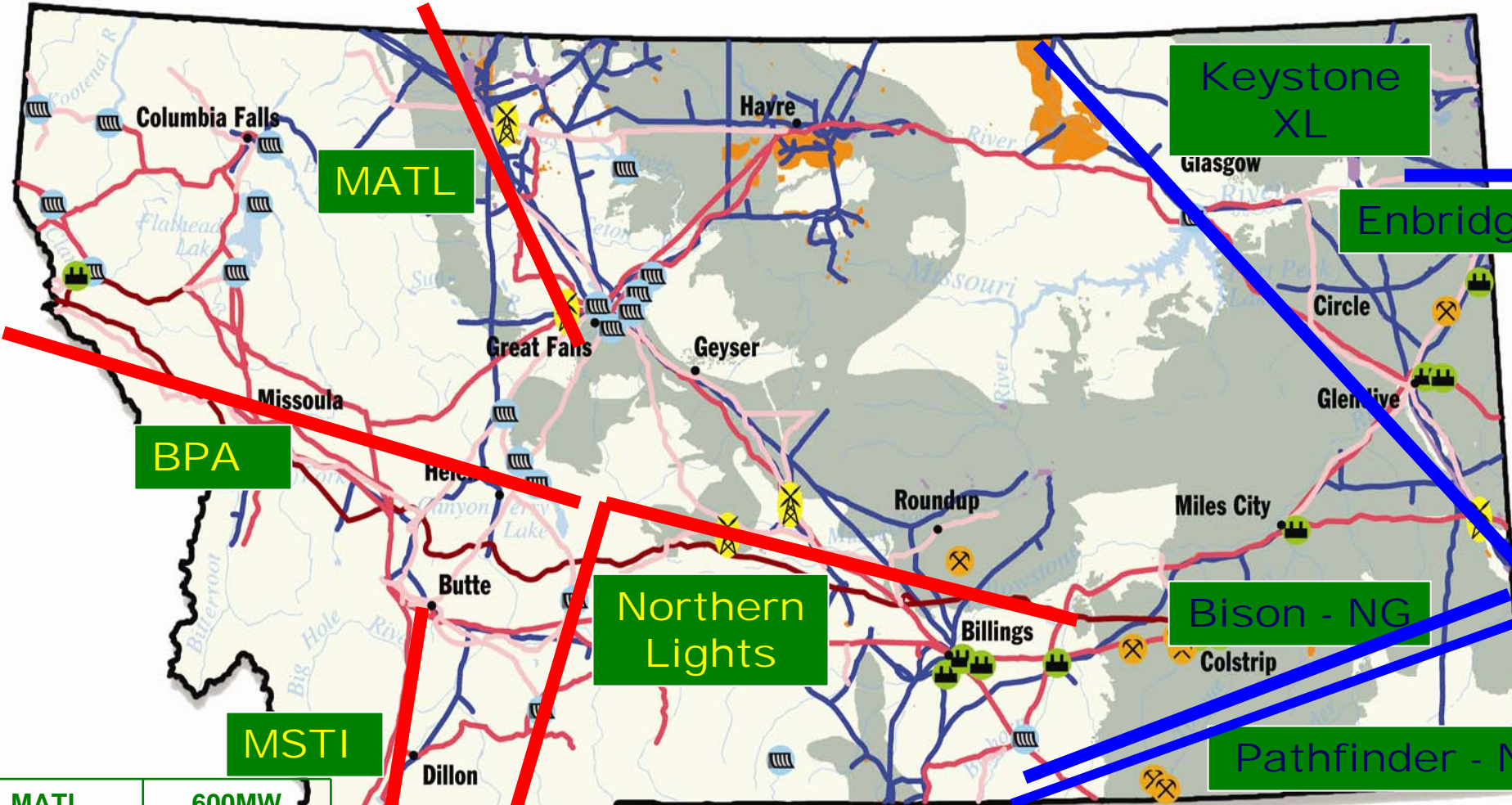
~permitted or under review

# 50 Wind Projects in Various Levels of Development





# Major New Transmission Lines & Pipelines in Development



MATL	600MW
MISTI	1500MW
Northern Lights	3000MW
BPA	750MW
<b>Nearly 6000 MW Total</b>	

Permitted Coal Mines	500 kV Lines
Thermoelectric Power Plants	230-161 kV Lines
Hydroelectric Power Plants <i>(Larger than 2 Megawatts)</i>	115-100 kV Lines
Windfarms in Production/Construction	Oil Fields
Natural Gas/Crude Oil Pipelines	Gas Fields
	Coal Deposits