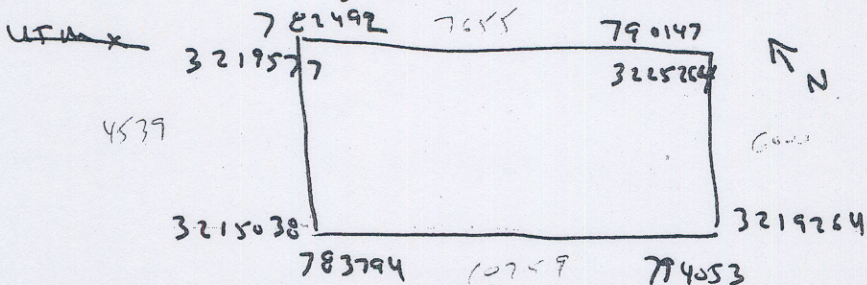


Note: Cruise ~~ID~~ changed to 0554 1554

Pt. Fourchon - potential resource survey.



8/9/05

Surveying area of possible fluid framework identified in 2000 Berateria (355, 00500) survey. ~12km SW of Caminada Pass. ~60' w.d.

Deploying CHIRP only. Off stbd. stern R/V Gilbert. Crew D. Bennett, Dana W., Jim F.

Seas lt. chop, 1' swell. Skies clear

Zulu

1342 Sol "3" Filename 003-1341.221 Hypack
Sol CHIRP OSC01 Depth not being recorded on Chirp only Hypack.

Predominate 4ms horizon

1354 chaotic reflectors below 4ms horizon?
Significant roll in ~~the~~ swell

priority

1-5

1424 Sea anchor deployed

143434 Chaotic reflector below ~24ms ^{e helix CHIRP} pvc #1

791178
3221896 (1)

*

143845 near surface transparent reflectors pvc #2

791363
3222341 (1) ①

1446 deep reflector ~30ms bChirp disappears pvc #

791625
3222988 (3)

1449

~~145144~~ subtle down-dragging refl. deep ~25ms ~~at~~ 791774, 3223453 (3) ②

1459 eol at pt. turning ~~SW~~ SW. (Hypack). Still reading CHIRP

150831 some chaotic patterns below 20ms bChirp

1510 Sol "2" Filename 002-1510.221 OSC02 (chirp)

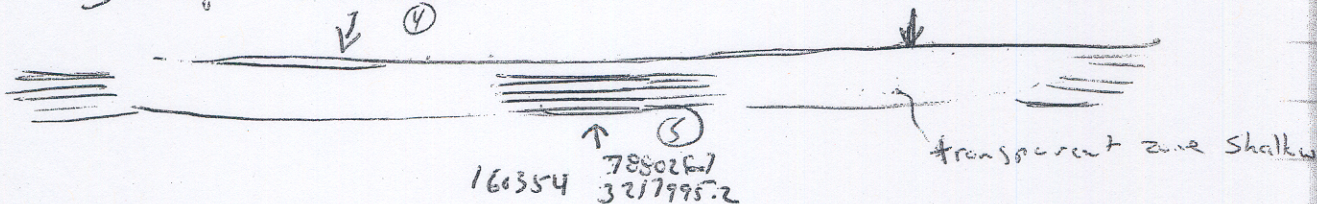
154188 Same as * ⁷⁸⁷⁰²⁷ 3220380 change w/ pvc #2? ③

1551, 1552 lower CHIRP, 1554 slow boat down

Replay line 2 compressed.

OSC02 continued...

160117 transparent return above strong reflector at 22ms
↳ chirp. 788135 3218288 (1) 787970.3 160359 3217818.4 (6)



160939 subtle down-dipping reflectors into "transparent zone"
shallow " 787827 3217512 (2) (7)

adjacent to above more dipping refl. (16100) 787804.9 3217464.7 (8)

162108 tzs appears more chaotic 787340.5, 321453.2 (2) (9)

~162915 strat core 787065.8 3215679.45 horiz. reflectors (3) (10)

163649 transparent zone at surface 7867784.9, 3214968.1 (11)

1641 turning to line "5" Sol, Sol OSC03

Hypack file 005-1640.221

165127 ~~transp.~~ transparent zone at surface, similar to 163649 787429.4 3214616.3 (12) (13)

170841 tzs 788876, 3215211.2 (13) (tzs = shallow, not surface)

171529 Strat. core 789453.9, 3215470.3 (14) (14)

172319 small channel?

1749, at line "5" Sol OSC04

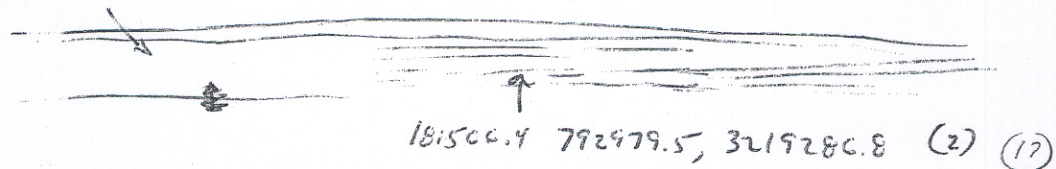
1752 Start new Hypack line 005-1752.221

1753 data write error end of CHIRP file

1758 Sol chirp OSC04a

↗

180641 transparent signal shallow 792707.9 (1) (15)
3218538
181229 tzs 792893, 3219052 (1) (16)



181500.4 792979.5, 3219280.8 (2) (17)

1846 at end of line "5", start new Hypack line 0071845.221
1849 sol chirp OSC05 turn to SE toward end of line 7

1925 tzs 794865, 3218769.7 (18) (3)

1923 strat core adjacent to " 794848.4, 3218956.1 (3) (19)

1936 at start of line "7" sol chirp

1936 sol OSC06 - same Hypack line

1943 turning NE on line "7", start new Hypack line ~~005-1943.221~~ 007-1944.221

200520 subtle, downdraping reflectors 795718, 3218389 (20)
deep (below predominant reflector) 5-10ms bsf.

201341 possible extension of tzs ⁷⁹⁵⁹⁰⁷ 3219206 (3) (21)

2027 nearing end of line "7", nothing different seen in seismic
~~heading~~ heading to SW side of line "3"

new hypack line 003-2028.221

2030 turning SW, ed, sol chirp OSC07

2049 arriving into tzs 794291.7, 3219789.4 (22)

2103 ~~crossing two other lines (with 5) good strat~~
~~- core 792826.51 3219130.0 (2)~~

2123 ~~transparent~~ transparent pattern of surface, chaotic refl.

below predominant strong & reflector
791132.65, 3218367.8 (1) (23)

2148 tzs begins (in between lines "2" and "3")

~~215052 tzs 788630.6, 3217310.97~~

~~215432 788703, 3217178 (tzs) (2)~~

220258 crossing line "2", w/ tzs good core site
787553, 3216893.75 (1) (24)

2209 tzs closing, ~~is~~ in between line 1+2 opens afterward

221558 tzs closing (after pipeline) 786425.5 (25)
3216402.3

2223 transparent pattern near surface 785849, 3216142 (26)
near line 1 eol, eod

8/10/05 Cont. ~~to~~ survey, using data from
yesterday to focus on SW portion of original grid -
tie into v-core BSS0168 (00SCC168). Same crew

2148 as yesterday. Same weather except slightly higher chop.

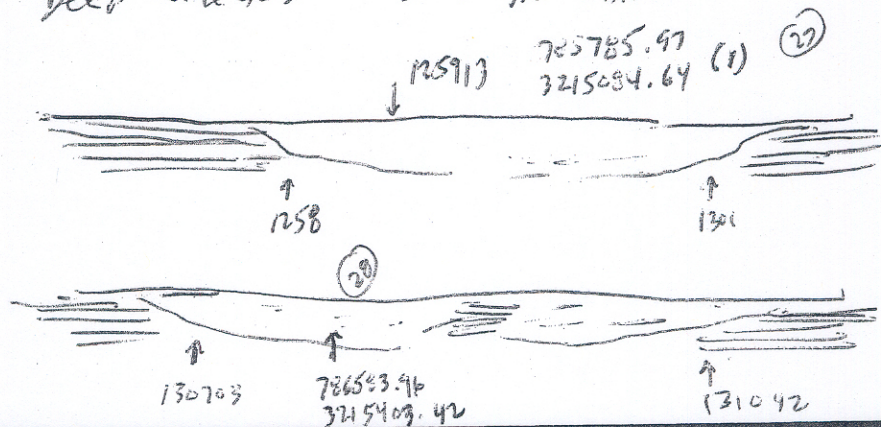
1245 05C08 Sol Chirp. Hypack 001A1245.222
heading ENE ^{parallel to} ~~in between lines~~ chirp line 05C03.

1250 transparent pattern at surface

1253 above pattern ends

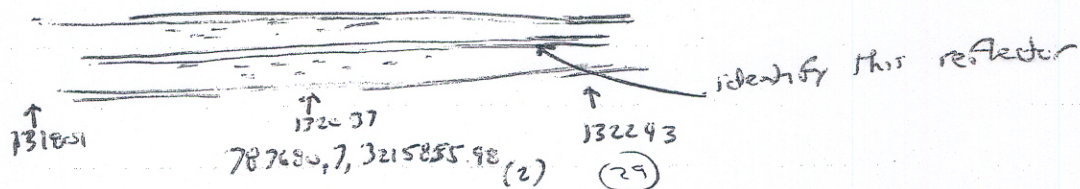
1255 Deep reflectors ~25ms in CHRP

(line 1 of
Cam. adv. more on day 2)



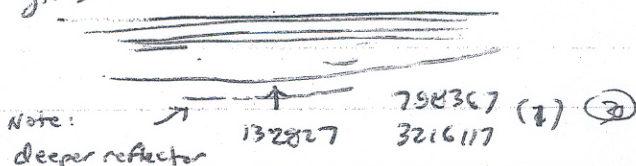
$$\frac{1.5}{10} \quad \frac{1}{x} \quad 1.5 \frac{10.5}{9.5}$$

131729 transparent pattern of surface

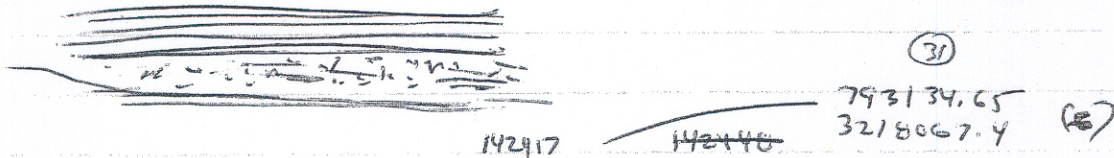


transparent pattern (above) ends 132519

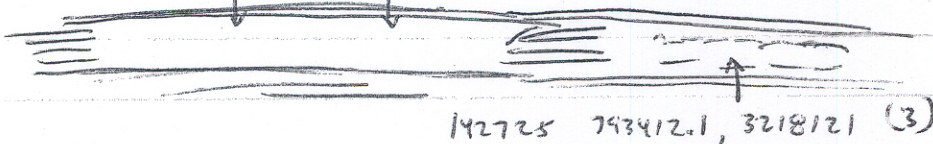
132653 tzs begins



135814 deeper, chaotic patterns. may be too deep for v-core (6.7m)



1423 tzs begins



1434 possible deep feature (35-40 ms below (11)orp) (32)

~~1435~~ tzs 1435-1436 tzs

1442 eol at end of line "1" (day 2). head east

1443 sol OSC09 heading 284°, hypack line 002-1444.222

heading on "line 1" on ~~the~~ planned line file (annex_Moreau_day2_line1)

1459 chaotic pattern near surface, ends 150122

1509 at end of "line 1", turning SW (line 2)

1510 sol OSC10, ~~keep hypack~~ hypack line 003-1511.222

1526 begin chaotic surface pattern (33) 790871.9 152730 (?)
3217919.9

1559 at eel, heading NW (330°) new Hypack line
004-1559.222, Chirp line 05011 line 4 of
can-nada-moran-line

160056 possible Anard 788705, 3214580 (1) (34)
Note: this may have something to do with turning

1606 transparent pattern at surface

160840 " , similar to 131729

160840 788361, 3215012 (2) (33)

161154 big transparent zone @ surface 788149, 3215466.7 (36)

161431 same as above, 787954, 3215718 (crossing (37)
line 05008) (1)

162015 shallow sand channels (?)

162047 787752, 3216228 (3) (38)



162632 tsz prevalent 787434, 3216716.9, (3) tsz (39)
has been persistent along this line

162940 tsz plus chaotic pattern near surface, some strat
deep (1) ~~787483~~ 787343.3, 3217005.6 (40)

1636 tsz end

(41)

787008
3217479



1638 786954.6
3217714 (42)

165444 possible small channel 786147, 3219173 (2) (43)

1504 at eel core site BSS 166, turning south, using line
file can-nada-moran-day 2 line 5.

New Chirp line 05012, Hypack 005-1718.222

174041 transparent pattern at surface begins:

(44)



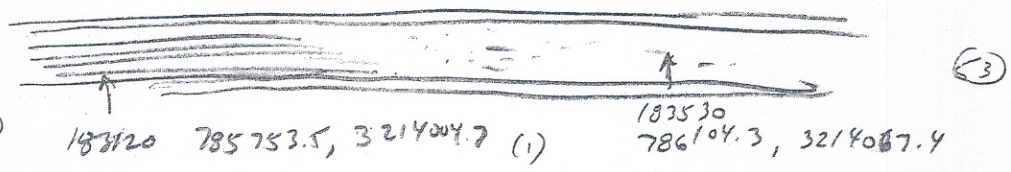
174214 785301, 3218855.5 (3)

174415
785353, 3218654.96 (45)

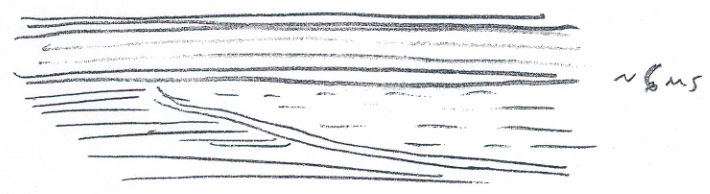
Pete

- 174830 big channel. 785367.1 3218213 (2) (46)
- 175723 channel? 785397. 3217282 (2) (47)
- 180441 record obscured near surface, possibly big channel
785494.3, 3216544 (2) (48)
- 181057 possible channel, watch out for pipeline in
vicinity 785489, 3215883 (3) (49)
- 181816 similar to above 785554, 3215126 (3) (50)
- 182227 " 785558.7, 3214685.7 (3) (51)
- 182740 eol turning east on line 5 of previous line file
- 1828 sal OSC13, hypack line 002 - 1828.222
- 1833 begin surface transparent zone.

(38)



- 1841 similar to 183530 786628.3, 3214091.35 (3) (54)
- 185450 - pick up boat speed.
- 1859 start of chaotic patterns at depth (don't deep for v-core)



- 190517 possible channel 788592, 3214548.5 (2) (55)
- 1912 ~~the~~ ~~res~~ begins 789256.3, 3214626.97 (1) (might also hit)
(watch out for pipeline) (56)
- 1918 eol, eol, eol

(27)
1865498
(37)