



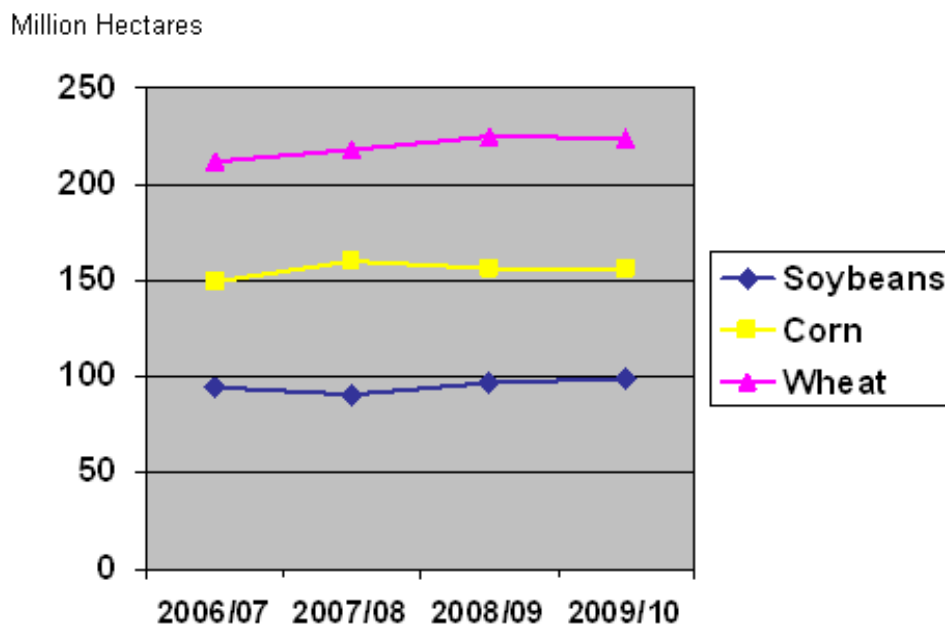
United States
Department of
Agriculture

Foreign
Agricultural
Service

Circular Series
WAP 05-09
May 2009

World Agricultural Production

World Wheat Area Down, Corn Steady, Soy Up



2009/10 – Initial Forecast

World 2009/10 Crop Area and Production Forecasts

The initial USDA country-level area and production estimates for 2009/10 grains, oilseeds, and cotton are provided this month. In previous years, only the initial grain estimates were released in May, but this year estimates for oilseeds and cotton are provided as well.

World wheat area for 2009/10 is estimated at 224 million hectares, down less than 1 percent from last year. International prices in September 2008, when many Northern Hemisphere wheat producers were deciding if they would plant, had declined from a year earlier while prices for corn and soybeans were stronger. Wheat production is forecast at 658 million metric tons, down

Approved by the World Agricultural Outlook Board

25 million tons from 2008/09, when excellent growing conditions occurred in many of the major producers.

World corn area is forecast at 156 million hectares for 2009/10, unchanged from the previous year. Reports of farmers foregoing corn planting because of high input costs have been received from many countries. Corn area is not increasing even though corn prices were high relative to wheat, and to a lesser extent soybean, during December to February when many farmers were making their corn planting decisions. Corn production is forecast virtually unchanged at 788 million tons as corn planting in the Northern Hemisphere is underway.

World soybean area is forecast at 99 million hectares up 2 million. Production is forecast at 242 million tons, up 29 million from 2008/09. Much of the increase results from an expectation of recovery in Argentina and Brazil which suffered from extreme drought in major producing areas. World international soybean/corn price ratios from October through December favored corn, but higher production costs have favored soybeans, which require fewer inputs. *(For more information, contact Paul Provance 202-720-0873.)*

Argentina: Dry Weather Reduces Estimated Harvested Area for 2009/10 Wheat

The USDA forecasts Argentine wheat production for 2009/10 at 11.0 million tons, up 31 percent from last season's 8.4 million tons but 35 percent less than the 2007/08 harvest. Area is estimated at 4.0 million hectares, 0.2 million hectares below last year and the lowest level since 1992/93, due to continued dry weather and limited soil moisture reserves. Yield is forecast at 2.75 tons per hectare, compared to the 5-year average yield (not including 2008/09) of 2.80 tons per hectare. Argentina's wheat crop is planted in May and will be harvested in December. Rain continues to be limited and scattered as the provinces of Buenos Aires and Cordoba enter what is normally the dry season. Many areas need 8 to 12 inches of additional rain above seasonal average in order to compensate below normal soil moisture reserves and produce an average wheat crop. *(For additional information, contact Dr. Denise McWilliams, at 202-720-0107.)*

China Wheat Production in 2009/10 Unchanged From Last Year

Wheat production for 2009/10 is forecast at 113.0 million tons, unchanged from last year. Area is estimated at 24.1 million hectares, up 0.1 million from a year ago. Yield is forecast at 4.69 tons per hectare, down slightly from last year's record. China's winter wheat crop was planted in September and October 2008 and will be harvested in June 2009. As of April 30, the crop was in the heading to filling stage in the main wheat-growing provinces. Satellite imagery and yield-simulation models indicate that current crop conditions are good. Dryness prevailed throughout eastern China from November through January but appears to have had no significant impact on wheat yields, due to aggressive drought-relief measures and timely rainfall in mid-February and March. Soil moisture levels are above normal in the Yangtze River basin, and drought conditions have developed in parts of Northwest China (Shanxi, Shaanxi, and Gansu provinces), but growing conditions continue to be generally favorable in the most important wheat growing provinces on the North China Plain. There have been no reports of significant insect or disease outbreaks this season. *(For more information, contact Paulette Sandene at 202-690-0133.)*

Ukraine: Favorable Prospects for 2009/10 Wheat Despite Credit Crunch

The USDA estimates Ukraine wheat production for 2009/10 at 19.0 million tons, down 6.9 million or 27 percent from last year. Harvested area is estimated at 6.6 million hectares, down 0.5 million or 6 percent from last year, and yield at 2.88 tons per hectare against last year's outstanding 3.67. Ukraine's winter wheat crop was planted in October and will be harvested in July. Winter wheat was sown on a reported 6.5 million hectares, down only 2 percent from last year despite plunging feed-wheat prices prior to the fall sowing campaign. Winterkill is expected to be relatively low: the Hydromel Center of Ukraine forecasts that 4 percent of the sown area will require re-seeding. Winter wheat accounts for approximately 95 percent of total wheat production in Ukraine.

Crop-assessment analysts from the USDA Foreign Agricultural Service observed very good winter-crop conditions in early April. Subsequent dryness has reduced crop vigor to some degree, but wheat was well established prior to the dry weather and has been able to tap into the adequate subsoil moisture reserves. Temperatures dipped below freezing throughout the main wheat production region in April, but weather data indicate that only in eastern Ukraine were minimum temperatures low enough to cause localized damage to winter wheat.

According to several commodity analysts and farm directors interviewed by the FAS team, a large share of the country's agricultural enterprises are essentially self-financing, and over half plan to maintain or increase fertilizer use on winter grains despite tight credit, high interest rates, and a near-total reduction in State subsidies. Nevertheless, many producers will reduce overall input use on both winter and spring crops in an effort to offset higher prices for fuel, imported seed, fertilizer, and plant-protection chemicals. *(For more information, contact Mark Lindeman at 202-690-0143.)*

Brazil: Slight Decrease Forecast for 2009/10 Corn Area

Brazil's corn area for 2009/10 is forecast at 14.0 million hectares, down 0.2 million or 1 percent from 2008/09. Production for 2009/10 is forecast at 54.0 million tons, up 3.5 million tons from the estimated 2008/09 output of 49.5 million tons. Yield is forecast at 3.86 tons per hectare, which is slightly below the 10-year trend of 3.99.

Corn area is forecast to decrease slightly, with producers expected to switch acreage from corn to soy. In southern Brazil, corn producers suffered greater losses than soy producers for 2008/09 because droughts occurred during critical growing periods for corn (which is planted after soy) and soy is more drought resistant than corn. Soybeans also have lower input costs and greater liquidity which has become more important to producers in a tight credit environment. However, planting intentions could always change as the planting season approaches because planted area is largely determined from prices during the September/October planting season and from expected US crop harvest in October/November. *(For additional information, please contact Curt Reynolds at 202-690-0134.)*

EU-27: Bumper Harvests Forecast for Wheat and Rapeseed

Weather conditions have been very favorable for both winter wheat and rapeseed, with no major winterkill episodes during the 2008-09 winter, allowing crops to emerge virtually unscathed. Europe's winter wheat and rapeseed crops are planted from late August through October and are harvested in July. In general, temperatures and rainfall has been beneficial across the continent. The most significant weather event to adversely affect autumn-sown crops was an excessively wet autumn in western Europe. This pushed back the 2008/09 crop harvest into the fall planting window for 2009/10 winter crops and hampered sowing operations. This was a significant problem in the United Kingdom and, to a lesser extent, in France. It has been reported that some of the UK's winter crops were re-sown with lower-yielding spring crops, including wheat, rape, and barley. The effect of recent dry weather on winter crops in eastern Europe (Poland, Germany, Hungary) is difficult to determine at this time. While last year's record production will likely not be attained this season, a bumper crop is still expected.

EU-27 wheat production for 2009/10 is forecast at 138.2 million tons, down 13.3 million or 9 percent from last year. Harvested area is estimated at 25.8 million hectares, down 1.1 million or 4 percent from last year, and yield at 5.36 tons per hectare against last year's near-record 5.63. Winter wheat accounts for the majority of wheat produced in the EU while spring varieties are concentrated in the northern tier countries. Falling grain prices encouraged farmers to return to the trend of increasing rapeseed area. Rapeseed is in direct competition with wheat in much of Europe's crop calendar, so if one rises the other typically falls. Marginal lands, which were seeded with wheat and other grains during the commodity boom in 2008/09, were left unplanted at the new, lower price levels.

EU-27 rapeseed production for 2009/10 is forecasted at 19.1 million tons, up 0.1 million or 0.5 percent from last year. Harvested area is estimated at 6.6 million hectares, up 0.3 million or 5 percent from last year, and yield at 2.89 tons per hectare against last year's 3.03. Rapeseed is the dominant oilseed grown in the EU, far outpacing sunflower, soybeans, and cottonseed. Winter rapeseed accounts for the majority of the crop, with smaller amounts of spring rapeseed concentrated in the northern tiers countries. During the autumn 2008 planting period, grain prices stabilized after their dramatic rise earlier in the year, lessening farmers' incentive to plant wheat and encouraging increased rapeseed area. Rapeseed is a vital component in the EU's biofuels policy, and observers expect that 2009/10 harvested rapeseed area will rise 5 percent from last season. (*For more information, contact Bryan Purcell at 202-690-0138.*)

Argentina: Soybean Harvest for 2008/09 Progresses Rapidly with Below-Average Yields

The USDA forecasts Argentine soybean production for 2008/09 at 34.0 million tons, down 5.0 million or 13 percent from last month. Area is estimated at 16.5 million hectares, unchanged from last month. Yield is forecast at 2.06 tons per hectare, down 13 percent from last month and compared to the record 2.99 tons per hectare in 2006/07 and the 5-year average of 2.70 tons per hectare. Argentina's soybean crop was planted in October and is being harvested now.

Warm and dry weather has continued in Argentina, allowing harvest to proceed at a rapid pace. Soybeans are over 85 percent harvested across the country. Yields are lower than expected, with poor quality of both first- and second-crop beans. Frost in Buenos Aires province has further reduced potential yield of already-drought-damaged late-harvested first crop soybeans around Tres Arroyos. In Laboulaye in Cordoba province, only 25 percent of the crop will be harvested due to uneven maturity and expected low yield. In La Pampa, yields are highly variable. In Santa Fe province, yields are low in Avellaneda delegation where some fields are being diverted for animal feed, but yields are higher in Casilda delegation due to timely rains in February. In the typically lower-yielding northern regions, soybeans generally did well with average or slightly below-average yields. *(For additional information, contact Dr. Denise McWilliams, at 202-720-0107.)*

Brazil: Slight Increase Forecast for 2009/10 Soybean Area

Brazil's soybean area for 2009/10 is forecast at 22.0 million hectares, up 0.6 million or 3 percent from 2008/09. Production is forecast at 60.0 million tons, up 3.0 million tons from the estimated 2008/08 output of 57.0 million tons. The 2009/10 forecast yield is 2.73 tons per hectare, slightly above the 10-year trend of 2.70 tons per hectare.

Industry sources indicate that soybean area is expected to increase 3 to 5 percent due to current favorable prices and the falling cost of fertilizer. Soy planting in Brazil begins in mid-September when irrigated soybeans are planted, and immediately following the end of the 90-day Free Host Period (June 15- September 15). The Free Host Period is now implemented by all soybean producing states as a method to reduce the spread of soybean rust spores. Several factors that will hamper large soybean expansion next season, especially in central Brazil, include: large debts carried over from rapid area expansion during 2000-2003; less credit availability; and more stringent environmental restrictions to prevent agricultural expansion into the Amazon forest. Planting intentions could always change as the planting season approaches; however, because planted area is largely determined by prices during the September/October planting season and from expected US crop harvest in October/November. *(For more information, contact Curt Reynolds at 202-690-0134.)*

China Cotton Area and Production Forecast to Drop in 2009/10

China's 2009/10 cotton production is forecast at 33.0 million bales (7.18 million tons), down 2.8 million or 8 percent from last year and below the 5-year average. Area is estimated at 5.4 million hectares, down 0.55 million from a year ago. Despite the Chinese government's efforts to maintain stable cotton production, planted area has been impacted by government support policies to increase grain production and food security, and the per-hectare returns from cotton are lower than competing crops. Yield is forecast at a record 1331 kilograms per hectare, up 2 percent from last year due to favorable planting weather and the increased proportion of planted area in Northwest China, where yields are above the national average.

Several planting intention surveys by government and industry sources indicate lower planted area for 2009/10. Nationally, the area reductions ranged from 10 to 22 percent in some earlier surveys, individual provinces were expected to show area reductions of 20 to 30 percent. The most recent surveys are more optimistic than earlier ones, owing to rising cotton prices, expanded subsidies for high quality seeds, and large government purchases of the 2008/09 crop (2.57 million tons as of mid-March) that helped stabilize the market.

Planting for the 2009/10 spring-sown cotton crop began in early April. In Xinjiang, area dropped an estimated 5 to 10 percent as farmers shifted to grains and other crops in response to government policies and higher profit margins. Warm temperatures in March and April allowed for early planting, but recent sandstorms damaged an estimated 100,000 hectares in Xinjiang. In the Yangtze River basin, wet and cool spring weather caused significant planting delays. A shortage of available land (planted to winter wheat rather than left fallow for spring cotton planting) means more cotton will be sown as a summer crop after the winter wheat harvest in May. The weather was normal on the North China Plain and planting progressed smoothly. Drought conditions caused planting and emergence problems in Gansu, Shanxi, and Shaanxi provinces. *(For more information, contact Paulette Sandene at 202-690-0133).*

This report uses information from the Foreign Agricultural Service's (FAS) global network of agricultural attachés and counselors, official statistics of foreign governments and other foreign source materials, and the analysis of economic data and satellite imagery. Estimates of foreign area, yield, and production are from the International Production Assessment Division, FAS, and are reviewed by USDA's Inter-Agency Commodity Estimates Committee. Estimates of U.S. area, yield, and production are from USDA's National Agricultural Statistics Service. Numbers within the report may not add to totals because of rounding. This report reflects official USDA estimates released in the World Agricultural Supply and Demand Estimates (WASDE-467) May 12, 2009.

Printed copies are available from the National Technical Information Service. Download an order form at http://www.ntis.gov/products/specialty/usda/fas_a-g.asp, or call NTIS at 1-800-363-2068.

The FAS International Production Assessment Branch prepared this report. The next issue of World Agricultural Production will be released after 9:30 a.m. Eastern Time, June 10, 2009.

Conversion Table

Metric tons to bushels

Wheat, soybeans	=	MT * 36.7437
Corn, sorghum, rye	=	MT * 39.36825
Barley	=	MT * 45.929625
Oats	=	MT * 68.894438

Metric tons to 480-lb bales

Cotton	=	MT * 4.592917
--------	---	---------------

Metric tons to hundredweight

Rice	=	MT * 22.04622
------	---	---------------

Area & weight

1 hectare	=	2.471044 acres
1 kilogram	=	2.204622 pounds

For further information, contact:
U.S. Department of Agriculture
Foreign Agricultural Service
Office of Global Analysis
International Production Assessment Division
Ag Box 1051, Room 4630, South Building
Washington, DC 20250-1051
Telephone: (202) 720-1156 Fax: (202) 720-1158

GENERAL INFORMATION

Acting Division Director	Tom St. Clair	202-720-2974 tom.stclair@fas.usda.gov
Acting Deputy Director	Paul Provance	202-720-0873 paul.provance@fas.usda.gov
Remote Sensing Specialist	Brad Doorn	202-690-0131 doorn@fas.usda.gov
USDA Remote Sensing Advisor	Glenn Bethel	202-720-1280 bethel@fas.usda.gov
Program Analyst	Mary Jackson	202-720-0886 jacksonma@fas.usda.gov
Agricultural Economist	Paul Provance	202-720-0873 paul.provance@fas.usda.gov

COUNTRY- AND REGION-SPECIFIC INFORMATION

South America	Denise McWilliams	202-720-0107 denise.mcwilliams@fas.usda.gov
Europe and North Africa	Bryan Purcell	202-690-0138 bryan.purcell@usda.gov
FSU-12	Mark Lindeman	202-690-0143 lindeman@fas.usda.gov
Canada, Mexico, Central America, Caribbean	Arnella Trent	202-720-0881 arnella.trent@fas.usda.gov
China, East Asia	Paulette Sandene	202-690-0133 paulette.sandene@fas.usda.gov
Other South America		
South Asia, Indonesia, Australia & New Zealand	Dath Mita	202-720-7339 mita.dath@fas.usda.gov
Sub-Saharan Africa, Brazil	Curt Reynolds	202-690-0134 reynoldsc@fas.usda.gov
Middle East and South East Asia	Michael Shean	202-720-7366 shean@fas.usda.gov
Eastern United States	vacant	
Western United States	Jim Crutchfield	202-690-0135 crutchfield@fas.usda.gov

Table 01 World Crop Production Summary

Million Metric Tons

Commodity	World -	Total Foreign	North America			EU-27 -	Former Soviet		Asia (WAP)					South America		Selected Other			All Others
			United States	Canada -	Mexico -		Russia -	Ukraine -	China -	India -	Indonesia	Pakistan	Thailand	Argentina	Brazil -	Australia	South Africa	Turkey -	
---Million metric tons---																			
Wheat																			
2007/08	609.7	553.9	55.8	20.1	3.6	120.2	49.4	13.9	109.3	75.8	nr	23.3	nr	16.8	3.8	13.8	1.9	15.5	86.4
2008/09 prel.	682.7	614.7	68.0	28.6	4.0	151.6	63.7	25.9	113.0	78.6	nr	21.5	nr	8.4	6.0	21.5	2.0	16.8	73.1
2009/10 proj. May	657.6	602.5	55.1	26.0	4.0	138.2	58.0	19.0	113.0	77.5	nr	24.0	nr	11.0	5.5	23.0	2.0	18.0	83.2
Coarse Grains																			
2007/08	1,077.2	727.3	349.9	27.8	30.8	136.1	29.3	14.6	159.1	40.6	8.5	3.6	3.9	27.0	61.3	11.5	13.7	9.5	149.9
2008/09 prel.	1,098.3	772.2	326.1	27.2	32.3	161.0	40.7	26.2	172.8	37.5	8.7	3.6	4.3	17.2	53.1	11.1	12.5	10.3	153.9
2009/10 proj. May	1,081.6	758.5	323.1	25.0	31.5	151.9	32.4	19.7	169.2	39.5	9.0	3.6	4.3	20.8	56.5	11.5	12.0	11.1	160.5
Rice, Milled																			
2007/08	433.8	427.5	6.3	nr	0.2	1.8	0.5	0.1	130.2	96.7	37.0	5.7	19.3	0.8	8.2	0.0	nr	0.4	126.6
2008/09 prel.	443.7	437.1	6.5	nr	0.2	1.7	0.5	0.1	135.1	98.9	37.3	6.3	19.4	0.8	8.5	0.1	nr	0.4	127.9
2009/10 proj. May	448.1	441.0	7.2	nr	0.2	1.8	0.5	0.1	134.4	99.5	37.6	6.2	20.0	0.9	8.5	0.1	nr	0.4	130.7
Total Grains																			
2007/08	2,120.7	1,708.7	412.0	47.9	34.6	258.2	79.2	28.6	398.6	213.1	45.5	32.6	23.2	44.6	73.4	25.4	15.6	25.3	363.0
2008/09 prel.	2,224.6	1,824.0	400.6	55.8	36.5	314.3	104.9	52.2	420.9	215.0	46.0	31.4	23.7	26.4	67.6	32.6	14.5	27.5	354.8
2009/10 proj. May	2,187.4	1,801.9	385.4	51.0	35.7	291.9	90.9	38.7	416.6	216.5	46.6	33.8	24.3	32.7	70.5	34.6	14.0	29.6	374.5
Oilseeds																			
2007/08	391.6	309.2	82.5	12.4	0.6	24.5	6.9	6.0	53.4	34.0	8.2	4.7	0.6	51.7	64.2	1.4	1.3	1.8	37.5
2008/09 prel.	396.2	307.2	89.0	16.0	0.7	27.2	8.8	10.2	57.3	34.4	9.0	5.0	0.6	37.4	59.6	2.1	1.4	1.7	35.7
2009/10 proj. May	422.1	327.6	94.5	13.8	0.7	27.1	8.4	8.6	56.7	36.5	9.0	5.0	0.7	55.9	62.5	2.5	1.4	1.6	37.4
Cotton																			
2007/08	120.4	101.2	19.2	nr	0.6	1.7	nr	nr	37.0	24.6	0.0	8.9	0.0	0.7	7.4	0.6	0.0	3.1	16.5
2008/09 prel.	107.9	95.1	12.8	nr	0.6	1.2	nr	nr	35.8	23.0	0.0	9.0	0.0	0.6	5.8	1.5	0.0	2.1	15.4
2009/10 proj. May	106.5	93.2	13.3	nr	0.4	1.1	nr	nr	33.0	25.0	0.0	9.2	0.0	0.7	5.5	1.9	0.0	1.9	14.4

1/ Includes wheat, coarse grains, and rice (milled) shown above.

Table 02 Wheat Area, Yield, and Production

Country / Region	Area (Million hectares)			Yield (Metric tons per hectare)			Production (Million metric tons)			Change in Production			
	2007/08	Prel.	2009/10 Proj.	2007/08	Prel.	2009/10 Proj.	2007/08	Prel.	2009/10 Proj.	From last month		From last year	
		2008/09	May		2008/09	May		2008/09	May	MMT	Percent	MMT	Percent
World	217.90	224.93	223.60	2.80	3.04	2.94	609.70	682.68	657.63			-25.06	-3.67
United States	20.64	22.54	19.79	2.70	3.02	2.79	55.82	68.03	55.14			-12.89	-18.94
Total Foreign	197.26	202.40	203.81	2.81	3.04	2.96	553.88	614.66	602.49			-12.17	-1.98
China, Peoples Republic of	23.72	24.00	24.10	4.61	4.71	4.69	109.30	113.00	113.00			0.00	0.00
South Asia													
India	28.00	28.15	27.80	2.71	2.79	2.79	75.81	78.60	77.50			-1.10	-1.40
Pakistan	8.40	8.20	9.00	2.77	2.62	2.67	23.30	21.50	24.00			2.50	11.63
Afghanistan	2.20	1.60	2.20	1.52	0.94	1.36	3.35	1.50	3.00			1.50	100.00
Former Soviet Union - 12													
Russian Federation	24.50	26.70	27.20	2.02	2.39	2.13	49.40	63.70	58.00			-5.70	-8.95
Ukraine	5.95	7.05	6.60	2.34	3.67	2.88	13.90	25.90	19.00			-6.90	-26.64
Kazakhstan, Republic of	12.75	12.90	13.50	1.30	0.97	1.04	16.60	12.50	14.00			1.50	12.00
Uzbekistan, Republic of	1.30	1.36	1.40	4.77	4.41	4.43	6.20	6.00	6.20			0.20	3.33
EU-27													
France	5.24	5.50	5.38	6.25	7.10	6.81	32.76	39.04	36.64			-2.40	-6.14
Germany	2.99	3.21	3.26	6.96	8.09	7.57	20.83	25.99	24.65			-1.34	-5.15
United Kingdom	1.83	2.08	1.85	7.22	8.28	8.11	13.22	17.23	15.00			-2.23	-12.93
Poland	2.11	2.28	2.29	3.94	4.07	3.95	8.32	9.28	9.05			-0.23	-2.48
Spain	1.83	2.07	1.88	3.47	3.25	3.24	6.35	6.71	6.10			-0.61	-9.15
Italy	2.04	2.46	1.85	3.50	3.99	3.73	7.15	9.80	6.90			-2.90	-29.61
Denmark	0.68	0.64	0.63	6.63	7.89	7.54	4.49	5.03	4.75			-0.28	-5.53
Hungary	1.11	1.13	1.14	3.59	5.00	4.39	3.99	5.62	5.00			-0.62	-11.06
Romania	1.85	2.17	2.18	1.62	3.48	3.41	3.00	7.56	7.43			-0.13	-1.72
Bulgaria	1.04	1.11	1.15	2.30	4.17	3.30	2.39	4.63	3.80			-0.83	-17.96
Canada	8.64	10.03	10.00	2.32	2.85	2.60	20.05	28.61	26.00			-2.61	-9.12
Australia	12.70	13.50	13.00	1.09	1.59	1.77	13.84	21.50	23.00			1.50	6.98
Middle East													
Turkey	8.60	8.60	8.70	1.80	1.95	2.07	15.50	16.80	18.00			1.20	7.14
Iran	6.90	5.85	6.40	2.17	1.71	1.88	15.00	10.00	12.00			2.00	20.00
Syria	1.67	1.49	1.65	2.42	1.40	1.82	4.04	2.09	3.00			0.91	43.75
North Africa													
Egypt	1.29	1.23	1.22	6.43	6.43	6.48	8.28	7.88	7.90			0.02	0.22
Morocco	2.57	2.86	3.00	0.62	1.31	2.07	1.58	3.73	6.20			2.47	66.22
Argentina	5.76	4.20	4.00	2.92	2.00	2.75	16.80	8.40	11.00			2.60	30.95
Others	21.59	22.05	22.43	2.71	2.81	2.74	58.43	62.06	61.37			-0.69	-1.11

Table 03 Total Coarse Grain Area, Yield, and Production

Country / Region	Area (Million hectares)			Yield (Metric tons per hectare)			Production (Million metric tons)			Change in Production			
	2007/08	Prel.	2009/10 Proj.	2007/08	Prel.	2009/10 Proj.	2007/08	Prel.	2009/10 Proj.	From last month		From last year	
		2008/09	May		2008/09	May		2008/09	May	MMT	Percent	MMT	Percent
World	317.59	311.37	310.81	3.39	3.53	3.48	1,077.18	1,098.31	1,081.59			-16.72	-1.52
United States	39.89	36.97	35.96	8.77	8.82	8.99	349.86	326.09	323.14			-2.95	-0.91
Total Foreign	277.70	274.41	274.85	2.62	2.81	2.76	727.32	772.22	758.46			-13.77	-1.78
China, Peoples Republic of	32.15	32.14	32.04	4.95	5.38	5.28	159.11	172.80	169.20			-3.60	-2.08
South America													
Brazil	16.00	15.45	15.23	3.83	3.43	3.71	61.34	53.05	56.51			3.46	6.52
Argentina	4.85	3.59	3.56	5.56	4.79	5.84	26.95	17.17	20.80			3.63	21.11
EU-27													
France	3.79	4.08	4.01	6.98	7.54	7.31	26.41	30.75	29.27			-1.48	-4.82
Germany	3.58	3.83	3.77	5.53	6.30	6.20	19.80	24.12	23.35			-0.77	-3.17
Poland	6.15	6.19	5.82	3.04	2.91	2.81	18.72	18.00	16.35			-1.65	-9.17
Spain	4.24	4.45	4.19	3.96	3.68	3.83	16.77	16.38	16.06			-0.32	-1.96
Italy	1.55	1.57	1.50	7.30	7.58	7.56	11.29	11.90	11.30			-0.60	-5.05
Hungary	1.67	1.77	1.76	3.38	6.30	5.15	5.64	11.15	9.06			-2.10	-18.80
United Kingdom	1.05	1.19	1.24	5.61	5.91	5.73	5.90	7.04	7.12			0.08	1.06
Romania	3.15	3.12	3.19	1.50	3.14	2.94	4.74	9.79	9.36			-0.43	-4.38
Former Soviet Union - 12													
Russian Federation	17.40	17.75	17.10	1.69	2.29	1.89	29.33	40.70	32.40			-8.30	-20.39
Ukraine	6.79	7.59	7.47	2.15	3.45	2.63	14.59	26.22	19.65			-6.57	-25.06
Kazakhstan, Republic of	2.18	2.18	2.18	1.38	1.06	1.11	3.02	2.32	2.42			0.10	4.32
Africa													
Nigeria	17.25	17.95	18.25	1.39	1.48	1.51	24.00	26.60	27.50			0.90	3.38
South Africa, Republic of	4.18	3.88	4.08	3.27	3.23	2.93	13.70	12.51	11.97			-0.54	-4.32
Ethiopia	4.68	4.88	4.93	1.77	1.89	1.81	8.30	9.24	8.93			-0.31	-3.37
Egypt	0.93	0.94	0.95	7.78	7.74	7.79	7.23	7.28	7.36			0.08	1.14
India	27.76	27.55	27.88	1.46	1.36	1.42	40.63	37.47	39.50			2.03	5.42
Southeast Asia													
Indonesia	3.21	3.22	3.25	2.65	2.70	2.77	8.50	8.70	9.00			0.30	3.45
Philippines	2.74	2.75	2.75	2.66	2.51	2.51	7.28	6.90	6.90			0.00	0.00
Thailand	1.03	1.06	1.05	3.78	4.04	4.12	3.91	4.26	4.31			0.05	1.17
Mexico	9.52	9.64	9.61	3.23	3.35	3.28	30.78	32.28	31.48			-0.80	-2.48
Canada	7.40	6.33	6.18	3.76	4.30	4.05	27.82	27.19	25.01			-2.18	-8.02
Australia	7.00	6.44	6.24	1.65	1.72	1.84	11.55	11.06	11.46			0.40	3.62
Turkey	4.38	4.25	4.23	2.16	2.43	2.63	9.48	10.32	11.15			0.83	8.05
Others	83.08	80.63	82.43	1.57	1.70	1.71	130.54	137.04	141.06			4.03	2.94

World and Selected Countries and Regions

5/12/2009 10:42:31 AM

Table 04 Corn Area, Yield, and Production

Country / Region	Area (Million hectares)			Yield (Metric tons per hectare)			Production (Million metric tons)			Change in Production			
	2007/08	Prel.	2009/10 Proj.	2007/08	Prel.	2009/10 Proj.	2007/08	Prel.	2009/10 Proj.	From last month		From last year	
		2008/09	May		2008/09	May		2008/09	May	MMT	Percent	MMT	Percent
World	159.86	156.40	156.28	4.95	5.04	5.02	791.63	787.83	785.14			-2.69	-0.34
United States	35.01	31.83	31.48	9.46	9.66	9.75	331.18	307.39	307.10			-0.29	-0.09
Total Foreign	124.84	124.57	124.80	3.69	3.86	3.83	460.45	480.45	478.04			-2.41	-0.50
China, Peoples Republic of	29.48	29.40	29.50	5.17	5.63	5.51	152.30	165.50	162.50			-3.00	-1.81
South America													
Brazil	14.70	14.20	14.00	3.99	3.56	3.86	58.60	50.50	54.00			3.50	6.93
Argentina	3.41	2.25	2.00	6.45	5.78	7.50	22.00	13.00	15.00			2.00	15.38
Mexico	7.33	7.45	7.30	3.22	3.36	3.29	23.60	25.00	24.00			-1.00	-4.00
EU-27													
France	1.48	1.69	1.60	9.67	9.23	9.19	14.36	15.62	14.70			-0.92	-5.87
Italy	1.01	1.06	1.01	9.41	9.53	9.51	9.50	10.10	9.60			-0.50	-4.95
Hungary	1.12	1.20	1.20	3.60	7.39	5.83	4.03	8.87	7.00			-1.87	-21.08
Romania	2.55	2.47	2.53	1.54	3.22	2.97	3.93	7.96	7.50			-0.46	-5.78
Poland	0.26	0.32	0.32	6.57	5.78	5.78	1.72	1.85	1.85			0.00	0.00
India	8.26	8.30	8.40	2.30	2.05	2.20	18.96	17.00	18.50			1.50	8.82
Canada	1.37	1.17	1.20	8.50	9.06	8.58	11.65	10.60	10.30			-0.30	-2.83
Indonesia	3.21	3.22	3.25	2.65	2.70	2.77	8.50	8.70	9.00			0.30	3.45
Ukraine	1.90	2.40	2.00	3.89	4.75	4.25	7.40	11.40	8.50			-2.90	-25.44
Serbia	1.21	1.27	1.30	3.36	4.65	5.00	4.05	5.90	6.50			0.60	10.17
Egypt	0.72	0.73	0.74	8.58	8.52	8.57	6.17	6.22	6.30			0.08	1.34
Philippines	2.74	2.75	2.75	2.66	2.51	2.51	7.28	6.90	6.90			0.00	0.00
Vietnam	1.15	1.14	1.20	4.00	3.97	4.00	4.60	4.53	4.80			0.27	5.96
Thailand	1.00	1.02	1.01	3.85	4.12	4.21	3.85	4.20	4.25			0.05	1.19
Russian Federation	1.30	1.65	1.80	3.04	4.00	3.89	3.95	6.60	7.00			0.40	6.06
Sub-Saharan Africa													
South Africa, Republic of	3.30	3.00	3.20	3.99	4.00	3.59	13.16	12.00	11.50			-0.50	-4.17
Nigeria	4.00	4.70	4.90	1.63	1.68	1.69	6.50	7.90	8.30			0.40	5.06
Ethiopia	1.77	1.98	2.00	2.12	2.33	2.25	3.75	4.60	4.50			-0.10	-2.17
Zimbabwe	1.30	0.90	1.00	0.40	0.44	0.40	0.53	0.40	0.40			0.00	0.00
Turkey	0.45	0.52	0.50	6.44	7.98	7.60	2.90	4.15	3.80			-0.35	-8.43
Others	29.83	29.78	30.09	2.25	2.38	2.37	67.16	70.95	71.34			0.39	0.55

World and Selected Countries and Regions

5/12/2009 10:42:22 AM

Table 05 Barley Area, Yield, and Production

Country / Region	Area (Million hectares)			Yield (Metric tons per hectare)			Production (Million metric tons)			Change in Production			
	2007/08	Prel.	2009/10 Proj.	2007/08	Prel.	2009/10 Proj.	2007/08	Prel.	2009/10 Proj.	From last month		From last year	
		2008/09	May		2008/09	May		2008/09	May	MMT	Percent	MMT	Percent
World	57.50	55.26	55.65	2.31	2.79	2.63	133.06	153.93	146.27			-7.66	-4.97
United States	1.42	1.52	1.39	3.23	3.42	3.52	4.58	5.21	4.90			-0.32	-6.04
Total Foreign	56.08	53.74	54.26	2.29	2.77	2.61	128.48	148.72	141.37			-7.34	-4.94
Russian Federation	9.80	9.70	9.20	1.60	2.38	1.74	15.65	23.10	16.00			-7.10	-30.74
EU-27													
Germany	1.92	1.96	1.97	5.42	6.10	6.06	10.39	11.97	11.90			-0.07	-0.56
France	1.70	1.80	1.81	5.58	6.80	6.50	9.47	12.24	11.76			-0.48	-3.92
Spain	3.22	3.46	3.22	3.60	3.26	3.44	11.60	11.26	11.10			-0.16	-1.43
United Kingdom	0.90	1.03	1.10	5.66	5.95	5.77	5.08	6.14	6.35			0.21	3.35
Denmark	0.63	0.72	0.70	4.98	4.69	4.71	3.13	3.36	3.30			-0.06	-1.81
Poland	1.23	1.21	1.15	3.25	3.00	3.00	4.01	3.63	3.45			-0.18	-4.96
Czech Republic	0.50	0.48	0.49	3.80	4.66	4.65	1.89	2.24	2.28			0.03	1.52
Finland	0.53	0.59	0.59	3.72	3.63	3.56	1.98	2.13	2.10			-0.03	-1.36
Sweden	0.32	0.40	0.38	4.48	4.18	4.21	1.44	1.68	1.60			-0.08	-4.65
Italy	0.35	0.33	0.30	3.55	3.65	3.67	1.23	1.19	1.10			-0.09	-7.33
Hungary	0.32	0.33	0.33	3.21	4.45	4.03	1.04	1.48	1.32			-0.16	-10.89
Austria	0.19	0.19	0.19	4.20	5.20	5.21	0.81	0.97	0.99			0.02	2.27
Ukraine	4.10	4.15	4.50	1.46	3.04	2.11	6.00	12.60	9.50			-3.10	-24.60
Canada	4.00	3.50	3.45	2.75	3.37	3.10	10.98	11.78	10.70			-1.08	-9.17
Australia	4.93	4.50	4.40	1.46	1.56	1.70	7.19	7.00	7.50			0.50	7.14
Turkey	3.60	3.40	3.40	1.67	1.65	1.99	6.00	5.60	6.75			1.15	20.54
China, Peoples Republic of	0.77	0.89	0.71	3.60	3.71	3.93	2.79	3.30	2.80			-0.50	-15.15
Iran	1.70	1.30	1.55	1.76	1.54	1.68	3.00	2.00	2.60			0.60	30.00
Morocco	1.99	2.18	2.35	0.38	0.58	1.45	0.76	1.27	3.40			2.13	167.30
Kazakhstan, Republic of	1.80	1.80	1.80	1.39	1.00	1.06	2.50	1.80	1.90			0.10	5.56
Ethiopia	0.98	0.95	0.98	1.38	1.56	1.33	1.36	1.48	1.30			-0.18	-12.40
Belarus	0.65	0.55	0.50	2.62	3.64	2.80	1.70	2.00	1.40			-0.60	-30.00
India	0.77	0.75	0.78	1.73	1.64	1.92	1.33	1.23	1.50			0.27	21.95
Argentina	0.44	0.48	0.55	3.35	3.33	3.50	1.47	1.60	1.93			0.33	20.31
Mexico	0.35	0.35	0.35	2.57	2.57	2.57	0.90	0.90	0.90			0.00	0.00
Iraq	1.44	0.50	0.50	0.74	0.86	0.90	1.06	0.43	0.45			0.02	4.41
Algeria	0.70	0.70	0.80	1.36	0.80	1.63	0.95	0.56	1.30			0.74	132.14
Others	6.24	5.55	6.22	2.05	2.48	2.29	12.78	13.77	14.20			0.43	3.14

World and Selected Countries and Regions

5/12/2009 10:42:26 AM

Table 06 Oats Area, Yield, and Production

Country / Region	Area (Million hectares)			Yield (Metric tons per hectare)			Production (Million metric tons)			Change in Production			
	2007/08	Prel.	2009/10 Proj.	2007/08	Prel.	2009/10 Proj.	2007/08	Prel.	2009/10 Proj.	From last month		From last year	
		2008/09	May		2008/09	May		2008/09	May	MMT	Percent	MMT	Percent
World	13.15	12.97	12.49	1.92	2.06	1.94	25.28	26.66	24.17			-2.49	-9.34
United States	0.61	0.57	0.57	2.16	2.28	2.29	1.31	1.29	1.31			0.02	1.48
Total Foreign	12.54	12.40	11.92	1.91	2.05	1.92	23.97	25.37	22.86			-2.51	-9.89
Russian Federation	3.70	3.70	3.50	1.46	1.57	1.43	5.40	5.80	5.00			-0.80	-13.79
Canada	1.82	1.45	1.32	2.58	2.94	2.65	4.70	4.27	3.50			-0.77	-18.03
EU-27													
Poland	0.55	0.56	0.55	2.30	2.35	2.30	1.27	1.32	1.27			-0.05	-3.88
Finland	0.35	0.36	0.38	3.52	3.42	3.27	1.22	1.21	1.23			0.01	0.99
Spain	0.53	0.50	0.47	2.47	2.30	2.11	1.30	1.15	1.00			-0.15	-12.97
Germany	0.18	0.18	0.18	4.09	4.43	4.57	0.73	0.79	0.80			0.01	0.88
Sweden	0.20	0.22	0.22	4.37	3.69	3.73	0.89	0.82	0.82			0.00	-0.36
United Kingdom	0.13	0.14	0.12	5.52	5.81	5.50	0.71	0.78	0.66			-0.12	-15.82
France	0.11	0.10	0.10	3.82	4.73	4.46	0.41	0.48	0.45			-0.03	-6.64
Italy	0.16	0.14	0.14	2.33	2.55	2.50	0.36	0.36	0.35			-0.01	-3.85
Denmark	0.06	0.07	0.08	4.92	4.27	4.20	0.31	0.32	0.32			0.00	-0.32
Romania	0.21	0.21	0.20	1.19	2.01	1.97	0.25	0.43	0.39			-0.04	-8.24
Czech Republic	0.06	0.05	0.05	2.69	3.18	3.00	0.16	0.16	0.15			-0.01	-3.85
Hungary	0.06	0.06	0.06	2.07	3.00	2.83	0.12	0.18	0.17			-0.01	-7.10
Austria	0.03	0.03	0.03	3.19	4.00	4.00	0.10	0.11	0.12			0.01	11.11
Ireland	0.02	0.02	0.02	7.25	7.30	7.22	0.15	0.17	0.13			-0.04	-22.62
Lithuania	0.07	0.06	0.06	2.07	2.00	2.00	0.14	0.12	0.12			0.00	0.00
Australia	0.90	1.00	0.95	0.94	1.20	1.32	0.84	1.20	1.25			0.05	4.17
Ukraine	0.35	0.45	0.40	1.57	2.11	1.75	0.55	0.95	0.70			-0.25	-26.32
China, Peoples Republic of	0.50	0.50	0.50	1.20	1.20	1.20	0.60	0.60	0.60			0.00	0.00
Belarus	0.25	0.25	0.25	2.40	3.60	2.40	0.60	0.90	0.60			-0.30	-33.33
Brazil	0.35	0.35	0.35	1.36	1.36	1.36	0.48	0.48	0.48			0.00	0.00
Argentina	0.22	0.26	0.25	2.10	1.96	2.00	0.47	0.50	0.50			0.00	0.00
Chile	0.08	0.08	0.08	4.75	4.75	4.75	0.38	0.38	0.38			0.00	0.00
Norway	0.09	0.09	0.09	4.19	4.19	4.19	0.36	0.36	0.36			0.00	0.00
Turkey	0.10	0.10	0.10	2.00	2.00	2.10	0.20	0.20	0.21			0.01	5.00
Kazakhstan, Republic of	0.16	0.16	0.16	1.00	1.00	1.00	0.16	0.16	0.16			0.00	0.00
Serbia	0.07	0.07	0.07	1.85	1.85	1.85	0.12	0.12	0.12			0.00	0.00
Others	1.25	1.26	1.26	0.80	0.84	0.83	1.00	1.06	1.04			-0.02	-1.42

World and Selected Countries and Regions

5/12/2009 10:42:25 AM

Table 07 Rye Area, Yield, and Production

Country / Region	Area (Million hectares)			Yield (Metric tons per hectare)			Production (Million metric tons)			Change in Production			
	2007/08	Prel.	2009/10 Proj.	2007/08	Prel.	2009/10 Proj.	2007/08	Prel.	2009/10 Proj.	From last month		From last year	
		2008/09	May		2008/09	May		2008/09	May	MMT	Percent	MMT	Percent
World	6.19	6.51	6.43	2.32	2.66	2.46	14.34	17.31	15.79			-1.53	-8.81
United States	0.10	0.11	0.11	1.57	1.86	1.70	0.16	0.20	0.18			-0.03	-12.32
Total Foreign	6.09	6.40	6.32	2.33	2.67	2.47	14.18	17.11	15.61			-1.50	-8.77
EU-27													
Poland	1.32	1.42	1.30	2.38	2.36	2.37	3.13	3.35	3.08			-0.27	-8.06
Germany	0.67	0.74	0.70	4.02	5.08	5.14	2.70	3.74	3.60			-0.14	-3.85
Spain	0.11	0.11	0.10	2.33	2.55	2.60	0.26	0.28	0.27			-0.01	-3.57
Lithuania	0.07	0.08	0.07	2.77	2.70	2.36	0.21	0.21	0.17			-0.04	-19.51
Latvia	0.06	0.06	0.05	3.31	3.39	3.60	0.20	0.19	0.18			-0.01	-5.26
France	0.03	0.03	0.03	4.44	4.69	4.60	0.12	0.12	0.12			-0.01	-5.74
Denmark	0.03	0.03	0.03	4.93	5.07	4.70	0.14	0.15	0.14			-0.01	-4.08
Czech Republic	0.04	0.04	0.04	4.81	4.88	4.50	0.18	0.21	0.18			-0.03	-14.29
Austria	0.05	0.05	0.06	4.02	4.13	4.09	0.19	0.22	0.23			0.01	2.74
Sweden	0.03	0.03	0.04	5.52	6.07	5.43	0.14	0.17	0.19			0.02	11.76
Hungary	0.04	0.04	0.04	1.97	2.59	2.32	0.08	0.11	0.10			-0.02	-16.67
Slovakia	0.02	0.03	0.03	2.57	3.15	2.80	0.05	0.08	0.07			-0.01	-14.63
Finland	0.03	0.02	0.03	2.72	2.54	2.48	0.09	0.06	0.06			0.00	1.64
United Kingdom	0.01	0.01	0.01	6.33	6.14	5.71	0.04	0.04	0.04			0.00	-6.98
Romania	0.01	0.01	0.02	1.69	3.54	2.76	0.02	0.05	0.05			0.00	2.17
Greece	0.02	0.02	0.02	1.87	1.83	1.83	0.03	0.03	0.03			0.00	0.00
Portugal	0.02	0.02	0.02	1.05	1.05	1.05	0.02	0.02	0.02			0.00	-4.35
Russian Federation	2.10	2.20	2.20	1.86	2.05	1.82	3.90	4.50	4.00			-0.50	-11.11
Belarus	0.60	0.50	0.60	2.17	3.20	2.33	1.30	1.60	1.40			-0.20	-12.50
Ukraine	0.35	0.45	0.45	1.57	2.33	1.78	0.55	1.05	0.80			-0.25	-23.81
Canada	0.11	0.13	0.12	2.12	2.46	2.33	0.23	0.32	0.28			-0.04	-12.50
Turkey	0.13	0.13	0.13	2.04	1.92	2.08	0.27	0.25	0.27			0.02	8.00
Argentina	0.05	0.05	0.05	1.15	1.15	1.15	0.06	0.06	0.06			0.00	0.00
Kazakhstan, Republic of	0.07	0.07	0.07	0.71	0.71	0.71	0.05	0.05	0.05			0.00	0.00
Australia	0.04	0.04	0.04	0.57	0.57	0.57	0.02	0.02	0.02			0.00	0.00
Switzerland	0.00	0.00	0.00	6.67	6.67	6.67	0.02	0.02	0.02			0.00	0.00
Others	0.10	0.10	0.10	2.11	2.01	1.95	0.21	0.20	0.20			-0.01	-2.96

World and Selected Countries and Regions

5/12/2009 10:42:22 AM

Table 08 Sorghum Area, Yield, and Production

Country / Region	Area (Million hectares)			Yield (Metric tons per hectare)			Production (Million metric tons)			Change in Production			
	Prel.		2009/10 Proj.	Prel.		2009/10 Proj.	Prel.		2009/10 Proj.	From last month		From last year	
	2007/08	2008/09	May	2007/08	2008/09	May	2007/08	2008/09	May	MMT	Percent	MMT	Percent
World	39.73	39.36	39.38	1.59	1.57	1.56	63.26	61.96	61.54			-0.43	-0.69
United States	2.75	2.94	2.41	4.60	4.08	4.01	12.64	12.00	9.65			-2.35	-19.55
Total Foreign	36.98	36.42	36.97	1.37	1.37	1.40	50.62	49.97	51.89			1.92	3.84
Sub-Saharan Africa													
Nigeria	7.40	7.40	7.50	1.35	1.49	1.53	10.00	11.00	11.50			0.50	4.55
Sudan	6.60	6.60	6.60	0.68	0.71	0.71	4.50	4.70	4.70			0.00	0.00
Ethiopia	1.53	1.55	1.55	1.73	1.69	1.68	2.66	2.62	2.60			-0.02	-0.73
Burkina	1.45	1.62	1.62	1.04	1.11	1.11	1.51	1.80	1.80			0.00	0.00
Tanzania, United Republic of	0.90	0.90	0.90	1.00	1.00	1.00	0.90	0.90	0.90			0.00	0.00
Niger	1.50	1.50	1.50	0.62	0.67	0.60	0.93	1.00	0.90			-0.10	-10.00
Uganda	0.31	0.31	0.31	1.58	1.58	1.58	0.49	0.49	0.49			0.00	0.00
Mozambique	0.50	0.50	0.50	0.70	0.75	0.75	0.35	0.38	0.38			0.00	0.00
Ghana	0.21	0.34	0.34	0.75	0.81	0.81	0.16	0.28	0.28			0.00	0.00
South Africa, Republic of	0.09	0.09	0.09	2.89	3.00	2.56	0.26	0.27	0.23			-0.04	-14.81
South Asia													
India	7.93	7.50	7.70	1.00	0.97	0.97	7.93	7.24	7.50			0.26	3.59
Pakistan	0.25	0.24	0.24	0.60	0.60	0.60	0.15	0.15	0.15			0.00	0.00
South America													
Argentina	0.71	0.54	0.70	4.14	3.70	4.71	2.94	2.00	3.30			1.30	65.00
Brazil	0.85	0.82	0.80	2.35	2.24	2.25	2.00	1.84	1.80			-0.04	-2.17
Mexico	1.78	1.78	1.90	3.49	3.54	3.42	6.20	6.30	6.50			0.20	3.17
China, Peoples Republic of	0.50	0.45	0.43	3.84	4.00	3.98	1.92	1.80	1.70			-0.10	-5.56
Australia	1.03	0.80	0.75	2.99	3.00	3.00	3.07	2.40	2.25			-0.15	-6.25
Egypt	0.16	0.16	0.16	5.63	5.63	5.63	0.90	0.90	0.90			0.00	0.00
EU-27													
France	0.05	0.04	0.05	5.88	6.15	6.00	0.29	0.24	0.27			0.03	12.50
Italy	0.03	0.04	0.04	5.68	6.32	6.00	0.19	0.24	0.24			0.00	0.00
Others	3.20	3.24	3.30	1.02	1.06	1.06	3.28	3.43	3.51			0.08	2.33

World and Selected Countries and Regions

5/12/2009 10:42:21 AM

Table 09 Rice Area, Yield, and Production

Country / Region	Area (Million hectares)			Yield (Metric tons per hectare)			Production (Million metric tons)			Change in Production			
	Prel.		2009/10 Proj.	Prel.		2009/10 Proj.	Prel.		2009/10 Proj.	From last month		From last year	
	2007/08	2008/09	May	2007/08	2008/09	May	2007/08	2008/09	May	MMT	Percent	MMT	Percent
World	154.71	155.71	157.23	4.18	4.25	4.25	433.82	443.65	448.14			4.49	1.01
United States	1.11	1.20	1.28	8.09	7.68	7.94	6.34	6.52	7.16			0.65	9.95
Total Foreign	153.60	154.51	155.95	4.15	4.22	4.22	427.47	437.14	440.98			3.85	0.88
East Asia													
China, Peoples Republic of	28.92	29.20	29.60	6.43	6.61	6.49	130.22	135.10	134.40			-0.70	-0.52
Japan	1.67	1.63	1.62	6.51	6.78	6.54	7.93	8.03	7.71			-0.32	-3.97
Korea, Republic of	0.95	0.94	0.93	6.28	6.99	6.55	4.41	4.84	4.50			-0.34	-7.08
Korea, Democratic Peoples R	0.60	0.59	0.59	3.94	4.89	4.89	1.53	1.86	1.86			0.00	0.00
South Asia													
India	43.77	44.00	44.10	3.31	3.37	3.38	96.69	98.90	99.50			0.60	0.61
Bangladesh	11.10	11.60	11.60	3.89	4.01	4.01	28.80	31.00	31.00			0.00	0.00
Pakistan	2.55	2.90	2.80	3.35	3.26	3.32	5.70	6.30	6.20			-0.10	-1.59
Southeast Asia													
Indonesia	11.90	11.85	11.85	4.82	4.88	4.92	37.00	37.30	37.60			0.30	0.80
Vietnam	7.41	7.35	7.27	4.98	4.88	4.95	24.38	23.69	23.76			0.07	0.28
Thailand	10.60	10.68	10.72	2.76	2.75	2.83	19.30	19.40	20.00			0.60	3.09
Burma, Union of	7.09	6.70	7.00	2.61	2.61	2.64	10.73	10.15	10.73			0.58	5.71
Philippines	4.35	4.40	4.45	3.83	3.82	3.82	10.48	10.59	10.71			0.12	1.10
Cambodia	2.54	2.60	2.65	2.64	2.62	2.67	4.22	4.28	4.45			0.17	3.87
Laos	0.82	0.85	0.88	3.51	3.53	3.62	1.73	1.80	1.90			0.10	5.56
Malaysia	0.65	0.66	0.67	3.49	3.57	3.62	1.48	1.53	1.58			0.05	2.94
South America													
Brazil	2.87	2.90	2.90	4.20	4.31	4.31	8.20	8.50	8.50			0.00	0.00
Peru	0.38	0.25	0.33	7.36	7.36	7.40	1.92	1.27	1.69			0.42	32.68
Sub-Saharan Africa													
Nigeria	2.20	2.30	2.40	2.27	2.32	2.36	3.00	3.20	3.40			0.20	6.25
Madagascar	1.35	1.33	1.35	2.67	2.72	2.70	2.30	2.30	2.34			0.03	1.39
EU-27													
Italy	0.23	0.22	0.24	6.71	6.25	6.69	0.95	0.85	0.96			0.11	12.68
Spain	0.10	0.10	0.10	7.23	6.94	6.95	0.52	0.47	0.46			0.00	-0.86
Egypt	0.67	0.67	0.67	10.07	10.04	10.04	4.39	4.39	4.37			-0.01	-0.30
Iran	0.63	0.58	0.63	5.24	3.95	4.85	2.18	1.50	2.00			0.50	33.33
Others	10.25	10.23	10.63	2.91	2.99	3.09	19.44	19.87	21.37			1.49	7.52

World and Selected Countries and Regions
Yield is on a rough basis, before the milling process
Production is on a milled basis, after the milling process

5/12/2009 10:42:22 AM

Table 10 5-Major Oilseeds; Area, Yield, and Production 1/

Country / Region	Area (Million hectares)			Yield (Metric tons per hectare)			Production (Million metric tons)			Change in Production			
	2007/08	Prel.	2009/10 Proj.	2007/08	Prel.	2009/10 Proj.	2007/08	Prel.	2009/10 Proj.	From last month		From last year	
		2008/09	May		2008/09	May		2008/09	May	MMT	Percent	MMT	Percent
World	193.11	201.11	203.72	1.94	1.88	1.98	374.83	378.49	404.29			25.80	6.82
United States	31.97	35.27	35.13	2.58	2.52	2.69	82.45	88.98	94.53			5.54	6.23
Total Foreign	161.14	165.84	168.60	1.81	1.75	1.84	292.38	289.50	309.76			20.26	7.00
South America													
Brazil	22.56	22.44	23.02	2.84	2.65	2.71	64.14	59.55	62.45			2.90	4.86
Argentina	19.76	18.73	20.85	2.62	1.99	2.68	51.71	37.35	55.93			18.58	49.73
Paraguay	2.99	2.94	2.85	2.44	1.38	2.15	7.30	4.06	6.13			2.06	50.80
Bolivia	0.87	0.87	0.89	1.36	1.53	1.70	1.18	1.33	1.51			0.18	13.16
Uruguay	0.50	0.54	0.55	1.70	1.63	1.78	0.85	0.88	0.98			0.11	12.00
China, Peoples Republic of	25.34	27.00	26.47	2.11	2.12	2.14	53.35	57.33	56.69			-0.64	-1.12
South Asia													
India	32.07	33.48	34.65	1.04	1.01	1.03	33.24	33.70	35.75			2.05	6.08
Pakistan	3.75	3.73	3.83	1.27	1.34	1.31	4.75	5.01	5.01			0.01	0.10
Former Soviet Union - 12													
Russian Federation	6.24	7.28	7.30	1.11	1.21	1.15	6.93	8.79	8.40			-0.39	-4.48
Ukraine	4.93	6.20	6.00	1.21	1.65	1.43	5.95	10.20	8.55			-1.65	-16.18
Uzbekistan, Republic of	1.43	1.42	1.30	1.63	1.50	1.35	2.33	2.13	1.75			-0.38	-17.84
Canada	7.48	7.77	7.37	1.65	2.06	1.87	12.35	16.01	13.82			-2.20	-13.72
EU-27													
France	2.17	2.09	2.11	2.79	2.99	2.97	6.03	6.24	6.24			0.01	0.11
Germany	1.57	1.40	1.57	3.43	3.73	3.41	5.37	5.21	5.35			0.14	2.71
United Kingdom	0.68	0.60	0.56	3.10	3.30	3.30	2.11	1.97	1.85			-0.12	-6.23
Romania	1.25	1.28	1.39	0.82	1.62	1.61	1.02	2.06	2.23			0.17	8.10
Czech Republic	0.37	0.39	0.39	2.99	2.93	2.95	1.11	1.13	1.15			0.02	1.50
Hungary	0.76	0.83	0.87	2.09	2.67	2.26	1.60	2.21	1.95			-0.26	-11.71
Poland	0.80	0.81	0.81	2.66	2.67	2.62	2.13	2.15	2.11			-0.04	-1.86
Italy	0.26	0.24	0.32	2.66	2.69	2.72	0.70	0.65	0.86			0.21	31.85
Australia	1.22	1.47	1.57	1.16	1.45	1.57	1.41	2.13	2.47			0.35	16.23
Turkey	1.03	0.88	0.86	1.77	1.90	1.85	1.83	1.67	1.60			-0.07	-4.20
Sub-Saharan Africa													
Nigeria	2.08	2.08	2.08	1.05	1.05	1.05	2.19	2.18	2.19			0.01	0.46
South Africa, Republic of	0.79	0.93	0.84	1.63	1.54	1.63	1.29	1.43	1.37			-0.05	-3.65
Southeast Asia													
Indonesia	1.33	1.38	1.38	1.46	1.50	1.49	1.94	2.06	2.06			0.00	0.00
Others	18.92	19.10	18.79	1.03	1.16	1.14	19.57	22.07	21.37			-0.70	-3.18

World and Selected Countries and Regions
1/ (soybeans, sunflowerseed, rapeseed, cottonseed, and peanuts)

5/12/2009 10:42:21 AM

Table 11 Soybean Area, Yield, and Production

Country / Region	Area (Million hectares)			Yield (Metric tons per hectare)			Production (Million metric tons)			Change in Production			
	2007/08	Prel.	2009/10 Proj.	2007/08	Prel.	2009/10 Proj.	2007/08	Prel.	2009/10 Proj.	From last month		From last year	
		2008/09	May		2008/09	May		2008/09	May	MMT	Percent	MMT	Percent
World	90.97	96.71	98.88	2.43	2.20	2.44	221.10	212.79	241.72			28.94	13.60
United States	25.96	30.21	30.35	2.81	2.67	2.86	72.86	80.54	86.95			6.42	7.97
Total Foreign	65.01	66.50	68.53	2.28	1.99	2.26	148.24	132.25	154.77			22.52	17.03
South America													
Brazil	21.30	21.40	22.00	2.86	2.66	2.73	61.00	57.00	60.00			3.00	5.26
Argentina	16.60	16.50	18.00	2.78	2.06	2.83	46.20	34.00	51.00			17.00	50.00
Paraguay	2.65	2.70	2.55	2.60	1.41	2.25	6.90	3.80	5.75			1.95	51.32
Bolivia	0.73	0.73	0.73	1.44	1.64	1.85	1.05	1.20	1.35			0.15	12.50
Uruguay	0.46	0.49	0.51	1.67	1.60	1.74	0.77	0.78	0.89			0.11	14.19
East Asia													
China, Peoples Republic of	8.75	9.50	9.10	1.60	1.68	1.71	14.00	16.00	15.60			-0.40	-2.50
Korea, Republic of	0.08	0.08	0.08	1.50	1.76	1.71	0.11	0.13	0.13			0.00	-1.52
Korea, Democratic Peoples R	0.14	0.14	0.14	1.19	1.19	1.19	0.16	0.16	0.16			0.00	0.00
Japan	0.14	0.14	0.14	1.63	1.63	1.63	0.23	0.23	0.23			0.00	0.00
India	8.80	9.60	9.80	1.08	1.01	1.02	9.47	9.65	10.00			0.35	3.63
Canada	1.17	1.21	1.30	2.31	2.73	2.62	2.70	3.30	3.40			0.10	3.03
Former Soviet Union - 12													
Ukraine	0.63	0.55	0.65	1.03	1.45	1.31	0.65	0.80	0.85			0.05	6.25
Russian Federation	0.71	0.71	0.70	0.92	1.05	1.00	0.65	0.74	0.70			-0.04	-5.91
Southeast Asia													
Indonesia	0.60	0.62	0.62	1.30	1.29	1.29	0.78	0.80	0.80			0.00	0.00
Vietnam	0.28	0.20	0.20	1.46	1.50	1.50	0.41	0.30	0.30			0.00	0.00
Thailand	0.14	0.12	0.12	1.50	1.50	1.50	0.21	0.18	0.18			0.00	0.00
Burma, Union of	0.12	0.12	0.12	1.01	1.00	1.00	0.12	0.12	0.12			0.00	0.00
EU-27													
Italy	0.13	0.12	0.15	3.14	3.13	3.28	0.41	0.36	0.50			0.14	37.78
France	0.03	0.02	0.02	2.75	2.95	3.00	0.09	0.06	0.06			0.00	-3.23
Sub-Saharan Africa													
South Africa, Republic of	0.17	0.23	0.23	1.71	1.80	2.09	0.28	0.41	0.47			0.07	16.05
Nigeria	0.44	0.44	0.44	1.02	1.02	1.02	0.45	0.45	0.45			0.00	0.00
Uganda	0.15	0.15	0.15	1.10	1.10	1.10	0.17	0.17	0.17			0.00	0.00
Serbia	0.15	0.15	0.15	2.20	2.41	2.41	0.33	0.35	0.35			0.00	0.00
Mexico	0.05	0.07	0.07	1.43	2.46	2.46	0.08	0.16	0.16			0.00	0.00
Iran	0.10	0.11	0.11	2.40	2.36	2.36	0.24	0.26	0.26			0.00	0.00
Others	0.49	0.44	0.48	1.59	1.94	1.90	0.78	0.85	0.91			0.06	6.46

Table 12 Cottonseed Area, Yield, and Production

Country / Region	Area (Million hectares)			Yield (Metric tons per hectare)			Production (Million metric tons)			Change in Production			
	2007/08	Prel.	2009/10 Proj.	2007/08	Prel.	2009/10 Proj.	2007/08	Prel.	2009/10 Proj.	From last month		From last year	
		2008/09	May		2008/09	May		2008/09	May	MMT	Percent	MMT	Percent
World	32.09	29.79	29.37	1.43	1.40	1.40	45.90	41.61	41.22			-0.39	-0.93
United States	4.25	3.08	3.20	1.41	1.27	1.34	5.98	3.90	4.29			0.39	10.00
Total Foreign	27.85	26.71	26.17	1.43	1.41	1.41	39.92	37.71	36.93			-0.78	-2.06
China, Peoples Republic of	6.20	5.95	5.40	2.34	2.36	2.39	14.50	14.03	12.93			-1.10	-7.84
South Asia													
India	9.44	9.35	9.60	1.10	1.05	1.11	10.40	9.80	10.65			0.85	8.67
Pakistan	3.00	2.90	3.00	1.29	1.38	1.33	3.88	4.00	4.00			0.00	0.00
Former Soviet Union - 12													
Uzbekistan, Republic of	1.43	1.42	1.30	1.63	1.50	1.35	2.33	2.13	1.75			-0.38	-17.84
Turkmenistan	0.60	0.60	0.60	0.85	0.88	0.85	0.51	0.53	0.51			-0.02	-3.77
Tajikistan, Republic of	0.25	0.23	0.20	0.90	0.80	0.80	0.23	0.19	0.16			-0.03	-13.51
Kazakhstan, Republic of	0.20	0.16	0.14	1.23	1.06	1.00	0.25	0.17	0.14			-0.03	-17.65
South America													
Brazil	1.08	0.85	0.83	2.54	2.54	2.47	2.74	2.16	2.05			-0.11	-5.14
Argentina	0.31	0.29	0.30	0.76	0.69	0.75	0.24	0.20	0.23			0.03	12.50
Middle East													
Turkey	0.52	0.35	0.30	1.95	2.09	2.00	1.02	0.72	0.60			-0.12	-16.67
Syria	0.20	0.17	0.19	2.76	2.74	2.79	0.55	0.47	0.53			0.07	13.98
Iran	0.12	0.10	0.08	0.98	0.97	0.96	0.12	0.10	0.07			-0.03	-25.77
Australia	0.08	0.16	0.22	2.55	2.44	2.73	0.19	0.40	0.60			0.20	50.00
EU-27													
Greece	0.35	0.27	0.25	1.68	1.67	1.68	0.58	0.45	0.42			-0.03	-6.87
Spain	0.06	0.05	0.06	1.02	0.57	0.58	0.07	0.03	0.04			0.01	16.67
Sub-Saharan Africa													
Burkina	0.40	0.44	0.40	0.47	0.53	0.55	0.19	0.24	0.22			-0.01	-5.96
Mali	0.28	0.19	0.13	0.45	0.52	0.68	0.13	0.10	0.09			-0.01	-14.14
Cameroon	0.14	0.16	0.15	0.75	0.78	0.83	0.11	0.13	0.13			0.00	0.00
Sudan	0.06	0.09	0.10	0.93	1.08	1.03	0.06	0.10	0.10			0.01	6.19
Zimbabwe	0.38	0.35	0.38	0.47	0.50	0.46	0.18	0.18	0.18			0.00	0.00
Nigeria	0.40	0.40	0.40	0.49	0.47	0.49	0.19	0.18	0.19			0.01	5.43
Benin	0.23	0.21	0.18	0.71	0.74	0.83	0.17	0.15	0.15			0.00	-1.97
Uganda	0.27	0.27	0.27	0.19	0.32	0.32	0.05	0.09	0.09			0.00	0.00
Egypt	0.24	0.13	0.13	1.42	1.23	1.55	0.34	0.16	0.20			0.04	26.25
Mexico	0.12	0.12	0.12	1.85	1.85	1.85	0.23	0.23	0.23			0.00	0.00
Burma, Union of	0.12	0.20	0.20	0.66	0.65	0.65	0.08	0.13	0.13			0.00	0.00
Others	1.37	1.30	1.25	0.46	0.51	0.44	0.63	0.66	0.56			-0.11	-15.96

Table 13 Peanut Area, Yield, and Production

Country / Region	Area (Million hectares)			Yield (Metric tons per hectare)			Production (Million metric tons)			Change in Production			
	2007/08	Prel.	2009/10 Proj.	2007/08	Prel.	2009/10 Proj.	2007/08	Prel.	2009/10 Proj.	From last month		From last year	
		2008/09	May		2008/09	May		2008/09	May	MMT	Percent	MMT	Percent
World	20.87	21.24	20.92	1.55	1.61	1.60	32.39	34.19	33.51			-0.68	-1.99
United States	0.48	0.61	0.45	3.44	3.83	3.42	1.67	2.34	1.52			-0.82	-34.90
Total Foreign	20.39	20.63	20.47	1.51	1.54	1.56	30.72	31.85	31.99			0.13	0.42
China, Peoples Republic of	3.95	4.20	4.10	3.30	3.33	3.32	13.03	14.00	13.60			-0.40	-2.86
South Asia													
India	6.50	6.40	6.60	1.05	0.98	1.06	6.80	6.25	7.00			0.75	12.00
Pakistan	0.11	0.11	0.11	0.90	0.90	0.90	0.10	0.10	0.10			0.00	0.00
Sub-Saharan Africa													
Nigeria	1.25	1.25	1.25	1.25	1.25	1.25	1.55	1.55	1.55			0.00	0.00
Senegal	0.61	0.77	0.50	0.55	0.93	0.90	0.33	0.71	0.45			-0.26	-36.62
Chad	0.50	0.35	0.35	0.45	1.32	1.32	0.22	0.47	0.47			0.00	0.00
Ghana	0.47	0.47	0.47	0.94	0.94	0.94	0.44	0.44	0.44			0.00	0.00
Sudan	1.00	1.00	1.00	0.85	0.85	0.85	0.85	0.85	0.85			0.00	0.00
Congo, Democratic Rep of th	0.48	0.48	0.48	0.78	0.78	0.78	0.37	0.37	0.37			0.00	0.00
Burkina	0.35	0.35	0.35	1.01	1.01	1.01	0.35	0.35	0.35			0.00	0.00
Guinea	0.22	0.21	0.21	1.45	1.24	1.24	0.32	0.26	0.26			0.00	0.00
Cameroon	0.31	0.31	0.31	0.77	0.77	0.77	0.24	0.24	0.24			0.00	0.00
Mali	0.25	0.25	0.25	1.10	1.10	1.10	0.28	0.28	0.28			0.00	0.00
Malawi	0.22	0.22	0.22	1.20	1.20	1.20	0.27	0.27	0.27			0.00	0.00
Cote d'Ivoire	0.15	0.15	0.15	1.00	1.00	1.00	0.15	0.15	0.15			0.00	0.00
Uganda	0.21	0.21	0.21	0.70	0.70	0.70	0.15	0.15	0.15			0.00	0.00
Central African Republic	0.13	0.13	0.13	1.12	1.12	1.12	0.14	0.14	0.14			0.00	0.00
Benin	0.14	0.16	0.16	0.86	0.81	0.81	0.12	0.13	0.13			0.00	0.00
Mozambique	0.29	0.29	0.29	0.38	0.38	0.38	0.11	0.11	0.11			0.00	0.00
Niger	0.26	0.26	0.26	0.42	0.42	0.42	0.11	0.11	0.11			0.00	0.00
South Africa, Republic of	0.05	0.06	0.06	2.19	2.33	2.02	0.12	0.13	0.12			-0.01	-10.16
Southeast Asia													
Indonesia	0.72	0.75	0.75	1.60	1.67	1.67	1.15	1.25	1.25			0.00	0.00
Burma, Union of	0.67	0.67	0.67	1.50	1.49	1.49	1.00	1.00	1.00			0.00	0.00
Vietnam	0.25	0.25	0.25	1.96	2.00	2.00	0.49	0.50	0.50			0.00	0.00
Thailand	0.07	0.07	0.07	1.75	1.77	1.77	0.11	0.12	0.12			0.00	0.00
South America													
Argentina	0.23	0.24	0.25	2.77	2.71	2.80	0.63	0.65	0.70			0.05	7.69
Brazil	0.12	0.12	0.12	2.63	2.55	2.61	0.30	0.29	0.30			0.01	2.39
Egypt	0.06	0.06	0.06	3.17	3.17	3.17	0.19	0.19	0.19			0.00	0.00
Mexico	0.04	0.05	0.05	1.69	1.56	1.56	0.07	0.07	0.07			0.00	0.00
Others	0.83	0.83	0.83	0.91	0.90	0.90	0.76	0.75	0.75			0.00	0.00

Table 14 Sunflowerseed Area, Yield, and Production

Country / Region	Area (Million hectares)			Yield (Metric tons per hectare)			Production (Million metric tons)			Change in Production			
	2007/08	Prel.	2009/10 Proj.	2007/08	Prel.	2009/10 Proj.	2007/08	Prel.	2009/10 Proj.	From last month		From last year	
		2008/09	May		2008/09	May		2008/09	May	MMT	Percent	MMT	Percent
World	21.11	22.86	23.20	1.29	1.42	1.37	27.15	32.36	31.86			-0.50	-1.55
United States	0.81	0.97	0.80	1.60	1.60	1.55	1.30	1.55	1.23			-0.32	-20.54
Total Foreign	20.29	21.89	22.40	1.27	1.41	1.37	25.85	30.80	30.62			-0.18	-0.59
Former Soviet Union - 12													
Russian Federation	5.00	6.00	6.00	1.13	1.23	1.17	5.65	7.35	7.00			-0.35	-4.76
Ukraine	3.40	4.25	4.00	1.24	1.53	1.38	4.20	6.50	5.50			-1.00	-15.38
Moldova, Republic of	0.24	0.23	0.25	0.67	1.78	1.60	0.16	0.40	0.40			0.00	0.00
Kazakhstan, Republic of	0.35	0.43	0.42	0.64	0.62	0.62	0.23	0.27	0.26			-0.01	-1.89
South America													
Argentina	2.62	1.70	2.30	1.77	1.47	1.74	4.65	2.50	4.00			1.50	60.00
Uruguay	0.04	0.05	0.04	2.00	1.92	2.32	0.07	0.10	0.10			-0.01	-5.00
Bolivia	0.14	0.14	0.16	0.93	0.93	0.99	0.13	0.13	0.16			0.03	19.23
China, Peoples Republic of	0.80	0.85	0.87	1.56	1.76	1.79	1.25	1.50	1.56			0.06	4.00
EU-27													
France	0.52	0.63	0.64	2.55	2.52	2.49	1.31	1.58	1.60			0.02	1.01
Hungary	0.51	0.55	0.56	2.07	2.71	2.26	1.06	1.49	1.27			-0.23	-15.21
Spain	0.60	0.71	0.65	1.17	1.27	1.26	0.70	0.90	0.82			-0.08	-8.79
Italy	0.13	0.12	0.15	2.20	2.27	2.20	0.28	0.26	0.33			0.07	26.44
Slovakia	0.07	0.08	0.08	2.05	2.55	2.23	0.13	0.19	0.17			-0.02	-12.57
South Asia													
India	1.63	1.53	1.65	0.69	0.65	0.61	1.12	1.00	1.00			0.00	0.00
Pakistan	0.38	0.45	0.45	1.52	1.52	1.52	0.58	0.69	0.69			0.00	0.00
Turkey	0.48	0.50	0.52	1.46	1.66	1.63	0.70	0.83	0.85			0.02	2.41
South Africa, Republic of	0.57	0.64	0.55	1.54	1.38	1.40	0.87	0.88	0.77			-0.11	-12.00
Burma, Union of	0.54	0.55	0.55	0.68	0.67	0.67	0.37	0.37	0.37			0.00	0.00
Serbia	0.13	0.20	0.20	2.00	2.45	2.45	0.26	0.49	0.49			0.00	0.00
Canada	0.08	0.07	0.07	1.58	1.62	1.60	0.13	0.11	0.12			0.00	2.68
Australia	0.05	0.06	0.06	1.54	1.18	1.27	0.07	0.07	0.07			0.01	7.69
Others	2.03	2.18	2.24	0.95	1.47	1.39	1.92	3.21	3.12			-0.09	-2.65

World and Selected Countries and Regions

5/12/2009 10:42:16 AM

Table 15 Rapeseed Area, Yield, and Production

Country / Region	Area (Million hectares)			Yield (Metric tons per hectare)			Production (Million metric tons)			Change in Production			
	2007/08	Prel.	2009/10 Proj.	2007/08	Prel.	2009/10 Proj.	2007/08	Prel.	2009/10 Proj.	From last month		From last year	
		2008/09	May		2008/09	May		2008/09	May	MMT	Percent	MMT	Percent
World	28.08	30.51	31.36	1.72	1.89	1.79	48.29	57.55	55.98			-1.57	-2.72
United States	0.47	0.40	0.34	1.39	1.64	1.57	0.65	0.66	0.53			-0.13	-19.82
Total Foreign	27.61	30.11	31.02	1.73	1.89	1.79	47.64	56.89	55.46			-1.44	-2.52
EU-27													
Germany	1.55	1.37	1.54	3.44	3.76	3.44	5.32	5.16	5.30			0.14	2.71
France	1.62	1.44	1.45	2.86	3.19	3.17	4.63	4.59	4.59			-0.01	-0.15
United Kingdom	0.68	0.60	0.56	3.10	3.30	3.30	2.11	1.97	1.85			-0.12	-6.23
Poland	0.80	0.80	0.80	2.67	2.68	2.63	2.13	2.14	2.10			-0.04	-1.87
Czech Republic	0.34	0.36	0.36	3.06	2.97	3.00	1.03	1.06	1.08			0.02	1.69
Denmark	0.18	0.17	0.18	3.28	3.69	3.51	0.58	0.64	0.62			-0.02	-3.15
Hungary	0.22	0.25	0.28	2.25	2.62	2.30	0.49	0.66	0.63			-0.02	-3.66
Romania	0.34	0.39	0.46	1.10	1.87	1.90	0.38	0.72	0.87			0.15	20.83
Slovakia	0.16	0.16	0.18	2.07	2.73	2.38	0.32	0.45	0.42			-0.02	-5.39
Sweden	0.09	0.09	0.10	2.53	2.90	2.79	0.22	0.26	0.27			0.00	0.38
Lithuania	0.17	0.20	0.22	1.88	1.75	1.73	0.32	0.35	0.38			0.03	8.57
Latvia	0.10	0.10	0.12	2.14	2.40	2.17	0.21	0.24	0.26			0.02	8.33
Austria	0.05	0.06	0.06	3.00	3.11	3.00	0.14	0.17	0.18			0.00	1.72
Finland	0.09	0.07	0.07	1.27	1.38	1.38	0.11	0.09	0.09			0.00	0.00
Estonia	0.07	0.08	0.09	1.49	1.50	1.50	0.11	0.12	0.14			0.02	12.50
China, Peoples Republic of	5.64	6.50	7.00	1.87	1.82	1.86	10.57	11.80	13.00			1.20	10.17
South Asia													
India	5.70	6.60	7.00	0.96	1.06	1.01	5.45	7.00	7.10			0.10	1.43
Pakistan	0.26	0.27	0.27	0.75	0.83	0.85	0.19	0.23	0.23			0.01	2.22
Bangladesh	0.30	0.30	0.30	0.71	0.73	0.75	0.21	0.22	0.23			0.01	2.27
Canada	6.23	6.49	6.00	1.53	1.94	1.72	9.53	12.60	10.30			-2.30	-18.25
Australia	1.06	1.20	1.25	1.00	1.30	1.36	1.07	1.56	1.70			0.14	8.97
Former Soviet Union - 12													
Ukraine	0.90	1.40	1.35	1.22	2.07	1.63	1.10	2.90	2.20			-0.70	-24.14
Russian Federation	0.54	0.58	0.60	1.18	1.22	1.17	0.63	0.70	0.70			0.00	0.00
Belarus	0.15	0.24	0.35	1.67	2.63	1.71	0.25	0.63	0.60			-0.03	-4.76
Paraguay	0.06	0.03	0.07	1.20	1.20	1.20	0.07	0.04	0.08			0.05	133.33
Others	0.34	0.38	0.39	1.35	1.58	1.43	0.46	0.60	0.56			-0.04	-7.01

World and Selected Countries and Regions

5/12/2009 10:42:15 AM

Table 16 Copra, Palm Kernel, and Palm Oil Production (Working Statistics)

Country / Region	Production (Million metric tons)			Change in Production			
	2007/08	Prel.	2009/10 Proj.	From last month		From last year	
		2008/09	May	MMT	Percent	MMT	Percent
Oilseed, Copra							
Philippines	2.50	2.52	2.52			0.00	0.00
Indonesia	1.50	1.60	1.60			0.00	0.00
India	0.70	0.74	0.74			0.00	0.00
Vietnam	0.24	0.24	0.24			0.00	0.00
Mexico	0.23	0.23	0.23			0.00	0.00
Papua New Guinea	0.13	0.13	0.13			0.00	0.00
Thailand	0.07	0.07	0.07			0.00	0.00
Sri Lanka	0.07	0.07	0.07			0.00	0.00
Mozambique	0.05	0.05	0.05			0.00	0.00
Cote d'Ivoire	0.05	0.05	0.05			0.00	0.00
World	5.72	5.88	5.88			0.00	0.00
Oilseed, Palm Kernel							
Indonesia	4.79	5.35	5.35			0.00	0.00
Malaysia	4.53	4.61	4.69			0.08	0.02
Nigeria	0.67	0.67	0.67			0.00	0.00
Thailand	0.21	0.28	0.30			0.02	0.07
Colombia	0.17	0.17	0.19			0.02	0.12
Papua New Guinea	0.10	0.11	0.12			0.01	0.09
Cote d'Ivoire	0.08	0.08	0.08			0.00	0.00
Cameroon	0.07	0.07	0.07			0.00	0.00
Ecuador	0.06	0.06	0.06			0.00	0.00
Congo, Democratic Rep of t	0.06	0.06	0.06			0.00	0.00
World	11.10	11.82	11.95			0.13	0.01
Oil, Palm							
Indonesia	18.00	19.50	20.75			1.25	0.06
Malaysia	17.57	17.70	18.50			0.80	0.05
Thailand	1.05	1.20	1.30			0.10	0.08
Nigeria	0.82	0.82	0.82			0.00	0.00
Colombia	0.83	0.80	0.80			0.00	0.00
Papua New Guinea	0.38	0.40	0.44			0.04	0.10
Ecuador	0.34	0.34	0.34			0.00	0.00
Cote d'Ivoire	0.32	0.32	0.32			0.00	0.00
Costa Rica	0.29	0.29	0.29			0.00	0.00
Congo, Democratic Rep of t	0.18	0.18	0.18			0.00	0.00
World	40.99	42.76	44.95			2.19	0.05

World and Selected Countries and Regions

5/12/2009 10:42:19 AM

Table 17 Cotton Area, Yield, and Production

Country / Region	Area (Million 1000 HA)			Yield (Kilograms per hectare)			Production (Million 480 lb. bales)			Change in Production			
	2007/08	Prel.	2009/10 Proj.	2007/08	Prel.	2009/10 Proj.	2007/08	Prel.	2009/10 Proj.	From last month		From last year	
		2008/09	May		2008/09	May		2008/09	May	MBales	Percent	MBales	Percent
World	32.94	30.68	30.17	796.00	766.00	768.00	120.44	107.88	106.46			-1.42	-1.32
United States	4.25	3.06	3.20	985.00	911.00	902.00	19.21	12.82	13.25			0.44	3.39
Total Foreign	28.69	27.61	26.98	768.00	750.00	752.00	101.23	95.06	93.21			-1.86	-1.95
China, Peoples Republic of	6.20	5.95	5.40	1,299.00	1,310.00	1,331.00	37.00	35.80	33.00			-2.80	-7.82
South Asia													
India	9.44	9.37	9.58	567.00	534.00	568.00	24.60	23.00	25.00			2.00	8.70
Pakistan	3.00	2.90	3.00	646.00	676.00	668.00	8.90	9.00	9.20			0.20	2.22
Former Soviet Union - 12													
Uzbekistan, Republic of	1.43	1.42	1.30	815.00	751.00	754.00	5.35	4.90	4.50			-0.40	-8.16
Turkmenistan	0.60	0.60	0.60	472.00	490.00	472.00	1.30	1.35	1.30			-0.05	-3.70
Tajikistan, Republic of	0.25	0.23	0.20	523.00	450.00	435.00	0.60	0.48	0.40			-0.08	-15.79
Kazakhstan, Republic of	0.20	0.16	0.14	680.00	592.00	544.00	0.63	0.44	0.35			-0.09	-19.54
Sub-Saharan Africa													
Burkina	0.40	0.44	0.40	367.00	421.00	435.00	0.68	0.85	0.80			-0.05	-5.88
Mali	0.28	0.19	0.13	345.00	401.00	523.00	0.45	0.35	0.30			-0.05	-14.29
Zimbabwe	0.38	0.35	0.38	272.00	286.00	264.00	0.48	0.46	0.46			0.00	0.00
Benin	0.23	0.21	0.18	465.00	489.00	544.00	0.50	0.46	0.45			-0.01	-2.17
Cote d'Ivoire	0.20	0.19	0.15	245.00	258.00	254.00	0.23	0.23	0.18			-0.05	-22.22
Cameroon	0.14	0.16	0.15	327.00	340.00	363.00	0.21	0.25	0.25			0.00	0.00
Nigeria	0.40	0.40	0.40	248.00	234.00	248.00	0.45	0.43	0.45			0.03	5.88
Sudan	0.06	0.09	0.10	399.00	460.00	435.00	0.11	0.19	0.20			0.01	5.26
South America													
Brazil	1.08	0.85	0.83	1,488.00	1,486.00	1,443.00	7.36	5.80	5.50			-0.30	-5.17
Argentina	0.31	0.29	0.30	494.00	465.00	490.00	0.70	0.62	0.68			0.06	8.87
Paraguay	0.06	0.05	0.05	363.00	283.00	327.00	0.10	0.07	0.08			0.01	15.38
Middle East													
Turkey	0.52	0.35	0.30	1,298.00	1,325.00	1,379.00	3.10	2.10	1.90			-0.20	-9.52
Syria	0.20	0.17	0.19	1,252.00	1,217.00	1,146.00	1.15	0.95	1.00			0.05	5.26
Iran	0.12	0.10	0.08	726.00	708.00	726.00	0.40	0.33	0.25			-0.08	-23.08
Australia	0.07	0.16	0.22	2,077.00	1,925.00	1,880.00	0.62	1.45	1.90			0.45	31.03
EU-27													
Greece	0.35	0.25	0.22	964.00	1,002.00	1,013.00	1.55	1.15	1.00			-0.15	-13.04
Spain	0.06	0.05	0.06	629.00	349.00	435.00	0.19	0.09	0.12			0.04	41.18
Egypt	0.24	0.13	0.13	880.00	837.00	871.00	0.97	0.50	0.50			0.00	0.00
Mexico	0.11	0.10	0.07	1,227.00	1,240.00	1,244.00	0.62	0.58	0.40			-0.18	-30.43
Others	2.37	2.46	2.44	276.00	290.00	272.00	3.00	3.27	3.05			-0.22	-6.72

TABLE 18

The table below presents a 27-year record of the differences between the May projection and the final estimate. Using world wheat production as an example, changes between the May projection and the final estimate have averaged 15.0 million tons (2.7percent) and ranged from -35.0 to 30.0 million tons. The May projection has been below the final 16 times and above the final 12 times.

RELIABILITY OF PRODUCTION PROJECTIONS

COMMODITY AND REGION	PROJECTION AND FINAL ESTIMATES, 1981/82 - 2007/08 1/					
	Difference		Lowest	Highest	Below	Above
	Average	Average	Difference		Final	Final
	Percent	---Million metric tons---			Number of years 2/	
WHEAT						
World	2.7	15.0	-35.0	30.0	16	12
U.S.	5.2	3.1	-7.2	9.8	13	15
Foreign	2.8	13.6	-32.9	28.7	15	13
COARSE GRAINS 3/						
World	3.0	25.2	-72.3	75.3	13	15
U.S.	9.0	19.0	-35.9	70.3	15	13
Foreign	2.3	13.9	-36.8	42.8	11	17
RICE (Milled)						
World	2.1	7.3	-21.8	15.2	18	10
U.S.	5.6	0.3	-1.0	0.5	17	11
Foreign	2.1	7.3	-22.0	15.3	18	10
SOYBEANS						
World	NA	NA	NA	NA	NA	NA
U.S.	7.1	4.3	-11.3	12.0	13	15
Foreign	NA	NA	NA	NA	NA	NA
COTTON						
World	5.0	4.6	-16.7	11.4	18	10
U.S.	9.8	1.6	-5.5	3.1	14	14
Foreign	5.0	3.7	-12.2	10.5	17	11
UNITED STATES	-----Million bushels-----					
CORN	9.3	659	-1382	2379	12	16
SORGHUM	16.4	97	-228	171	12	15
BARLEY	9.3	32	-73	206	10	18
OATS	17.9	39	-77	231	7	21

1/ The final estimate for 1981/82-2007/08 is defined as the first November estimate following the marketing year.

2/ May not total 27 if projection was the same as the final.

3/ Includes corn, sorghum, barley, oats, rye, millet, and mixed grain.