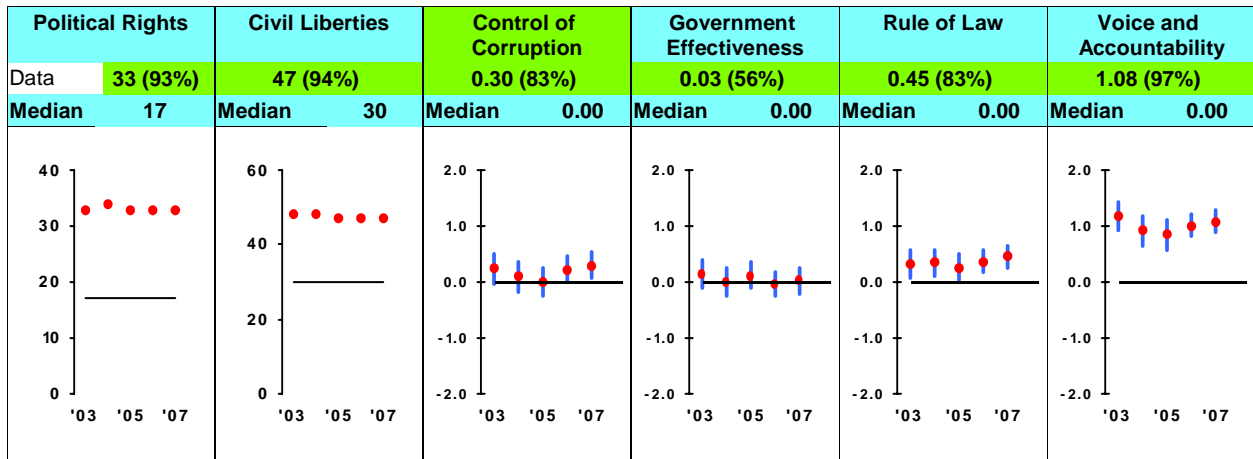
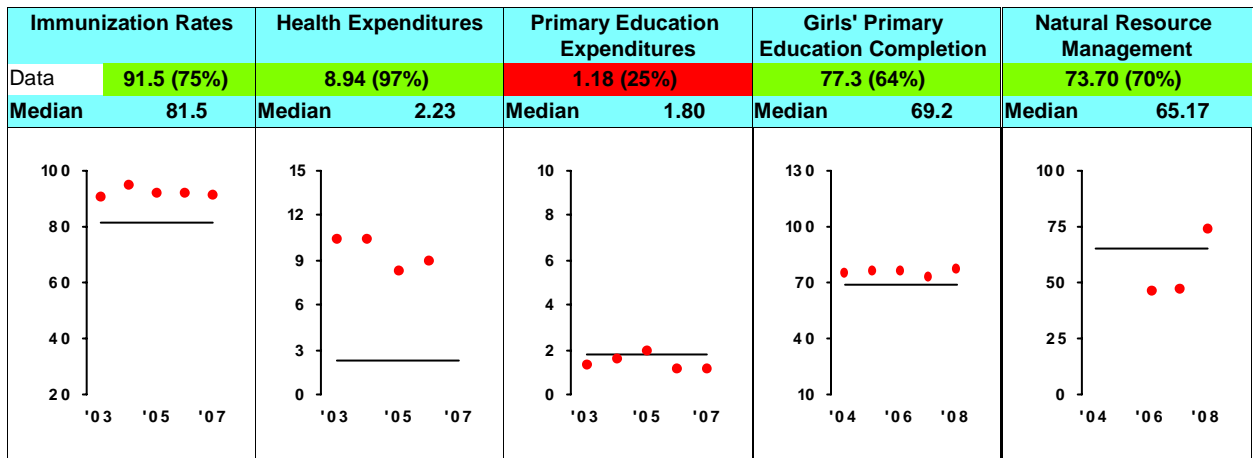


## Ruling Justly



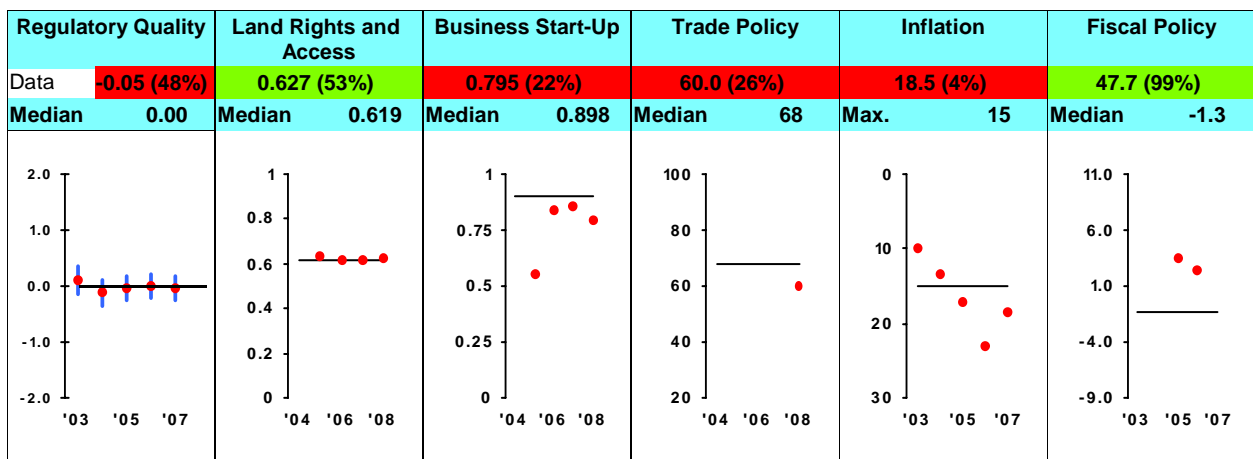
Sources: Freedom House Freedom House World Bank Institute World Bank Institute World Bank Institute World Bank Institute

## Investing In People



Sources: World Health Org. World Health Org. UNESCO/National Sources UNESCO CIESIN/YCELP

## Economic Freedom



Sources: World Bank Institute IFAD/IFC IFC Heritage Foundation IMF WEO IMF/National Sources

How to Read this Scorecard: Each MCC Candidate Country receives an annual scorecard assessing its performance in 3 policy categories: Ruling Justly, Investing in People, and Economic Freedom. Under the name of each indicator is the country's score and percentile ranking in its income peer group (0% is worst; 50% is the median; 100% is best). Under each country's percentile ranking is the peer group median. Country performance is evaluated relative to the peer group median. Scores above the median, represented with green, meet the performance standard. Scores at or below the median, represented with red, do not meet the performance standard. The black line that runs along the horizontal axis represents the peer group median. Each World Bank Institute indicator is accompanied by a margin of error, which is represented by the vertical blue bar.

For more information regarding the Millennium Challenge Account Selection Process and these indicators, please consult MCC's website: [www.mcc.gov](http://www.mcc.gov)