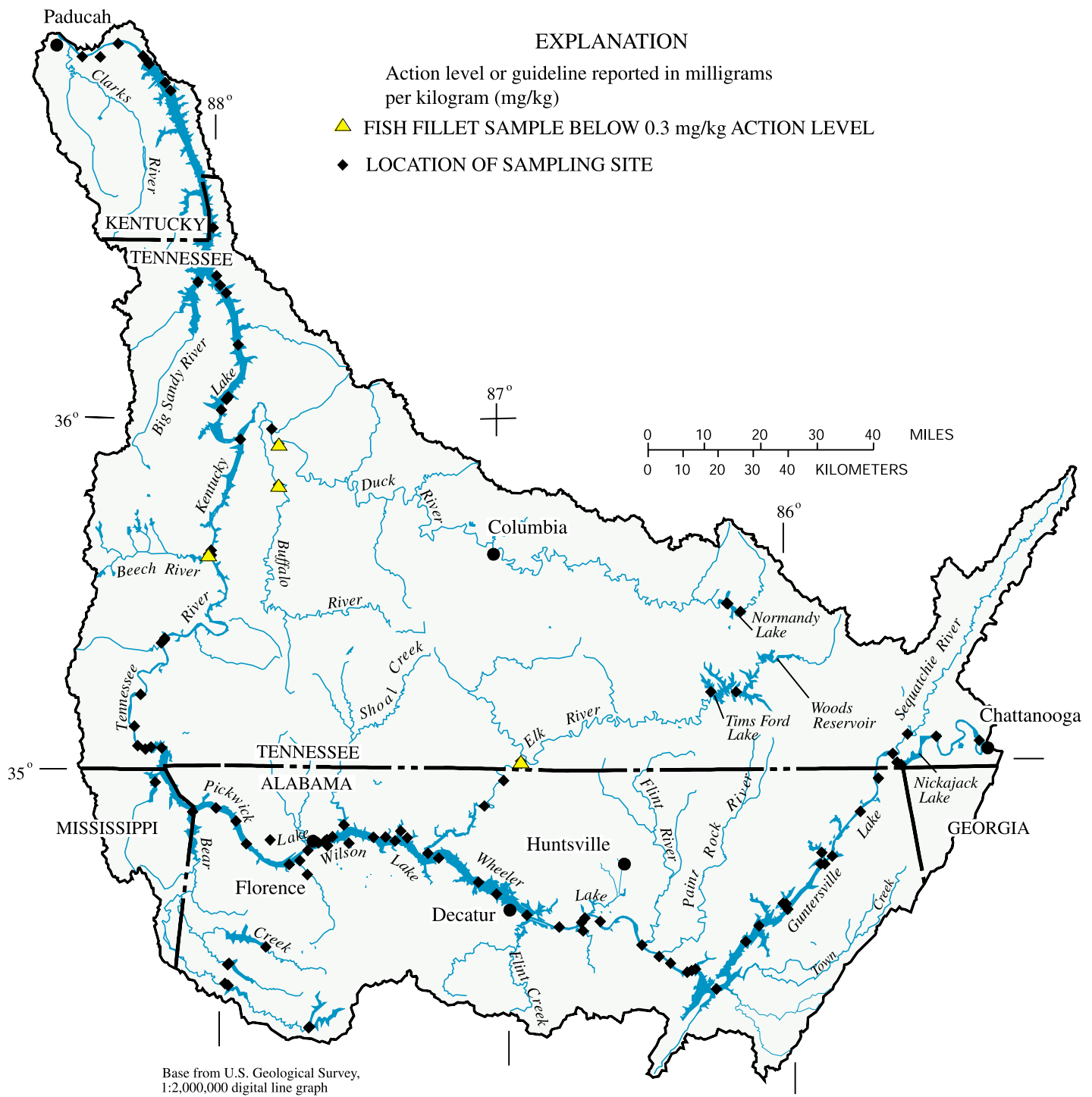




**Figure 2.** Location of sampling sites with detections of aldrin in fish tissue in the lower Tennessee River Basin, 1980-98.



**Figure 3.** Location of sampling sites with detections of heptachlor in fish tissue in the lower Tennessee River Basin, 1980-98.

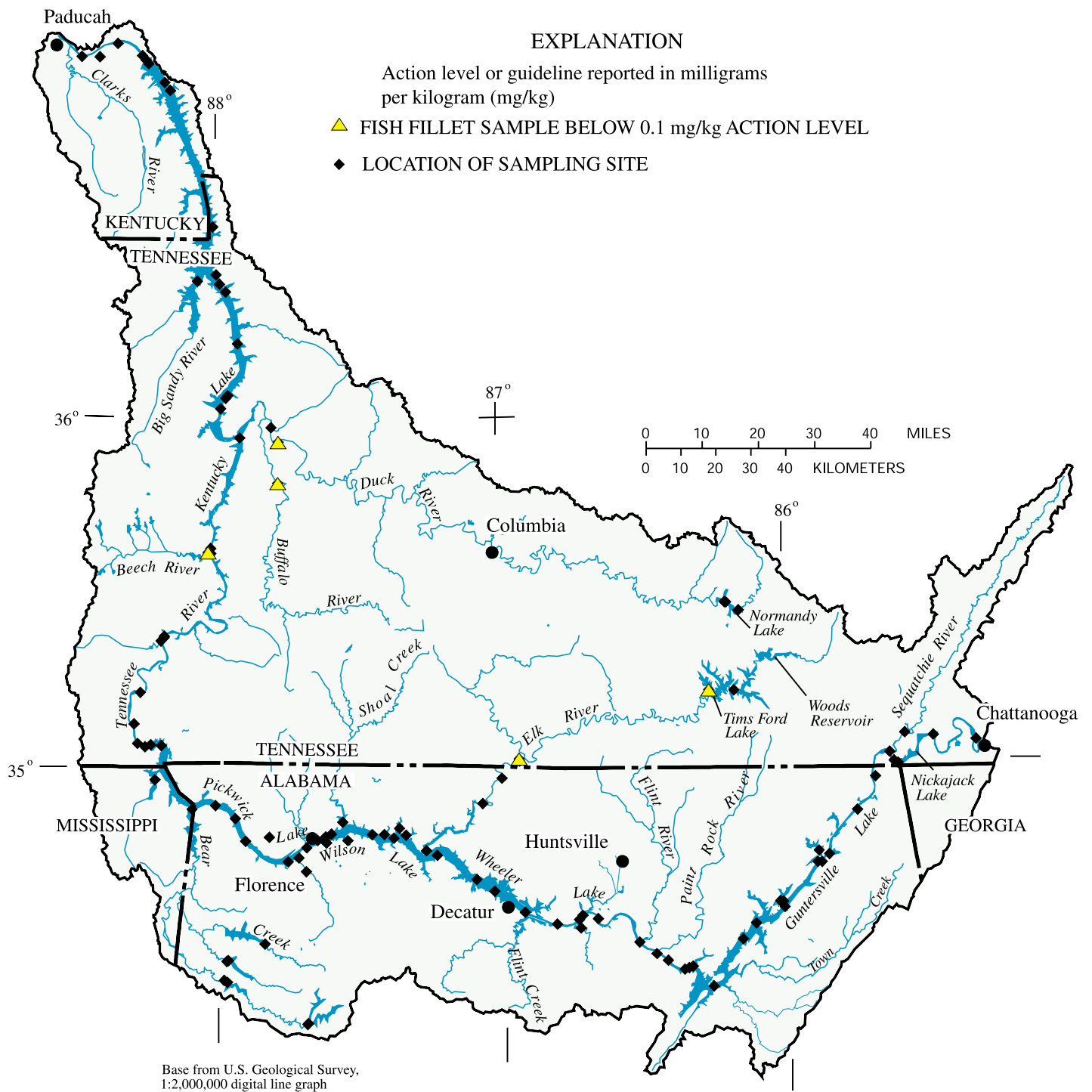
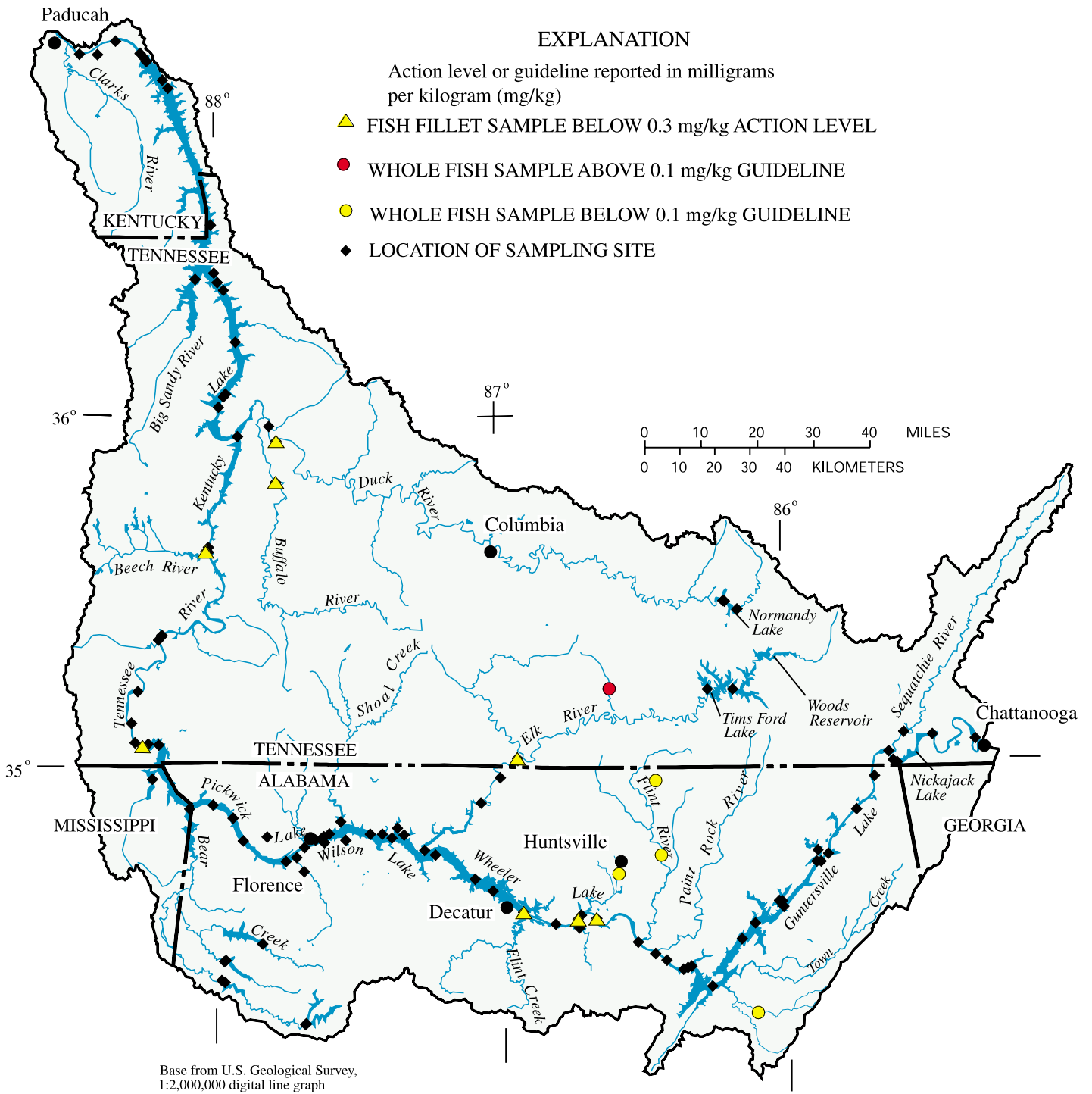
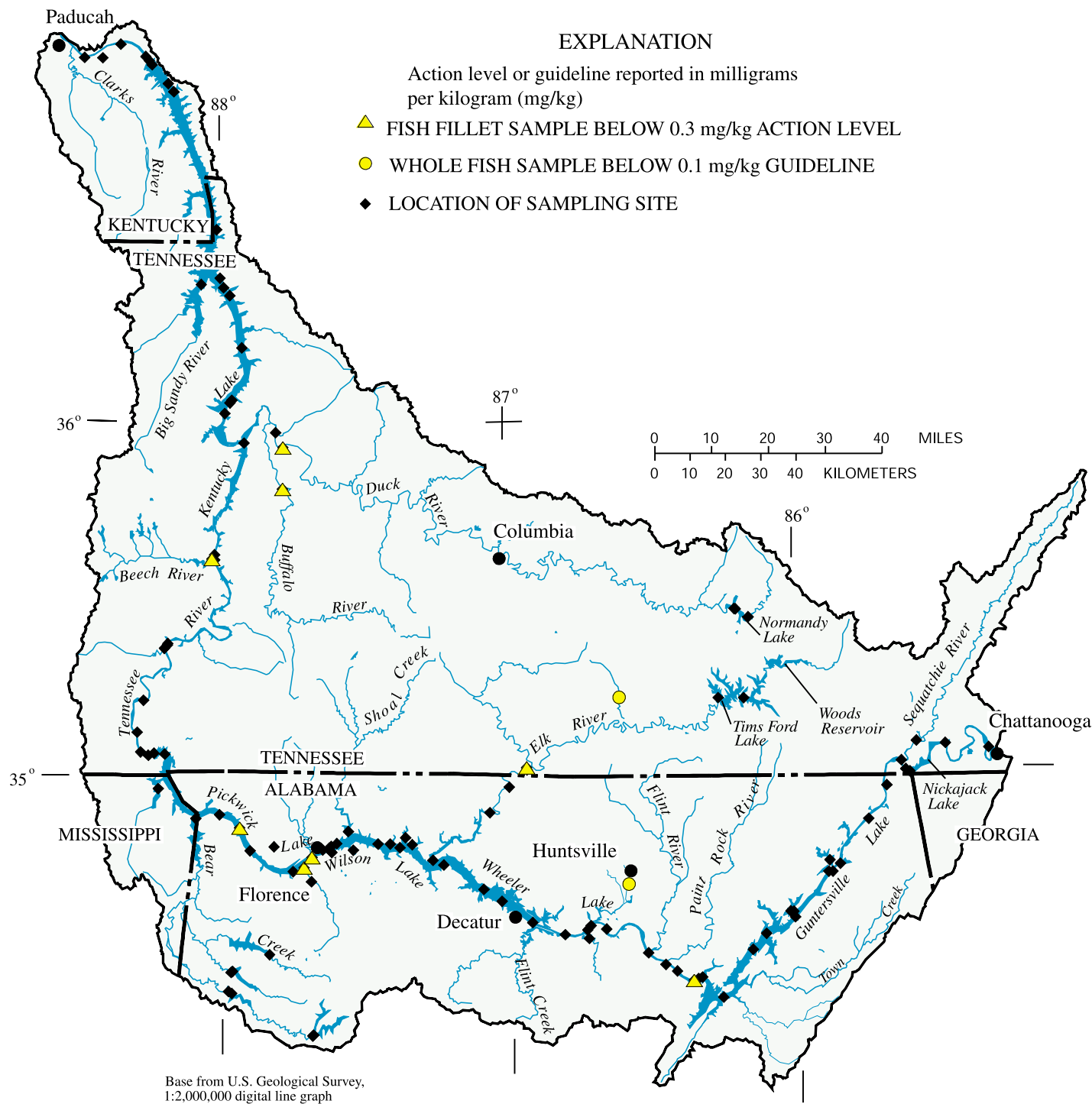


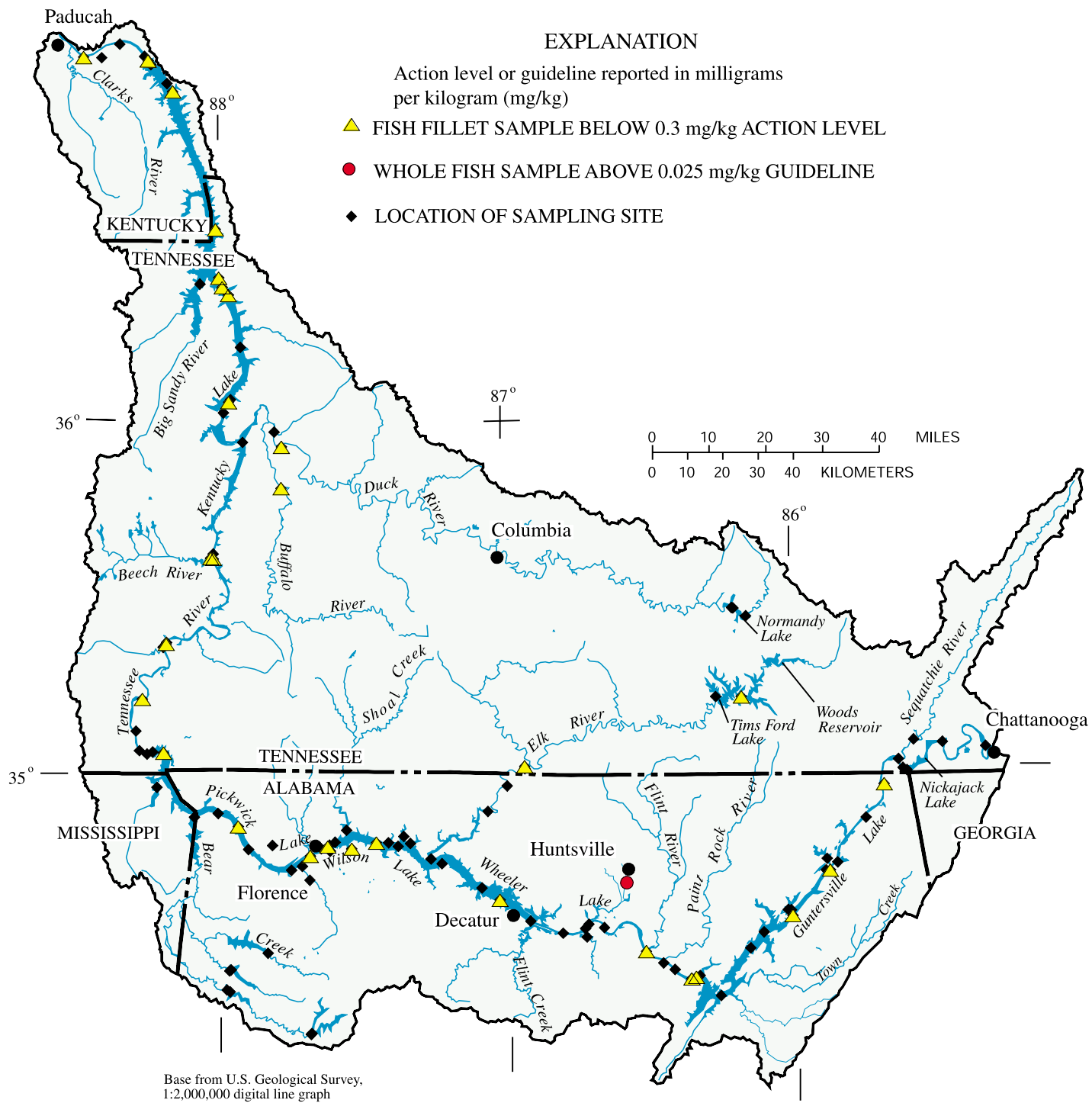
Figure 4. Location of sampling sites with detections of mirex in fish tissue in the lower Tennessee River Basin, 1980-98.



**Figure 5.** Location of sampling sites with detections of dieldrin in fish tissue in the lower Tennessee River Basin, 1980-98.



**Figure 6.** Location of sampling sites with detections of heptachlor epoxide in fish tissue in the lower Tennessee River Basin, 1980-98.



**Figure 7.** Location of sampling sites with detections of endrin in fish tissue in the lower Tennessee River Basin, 1980-98.