

RIRIE RESERVOIR

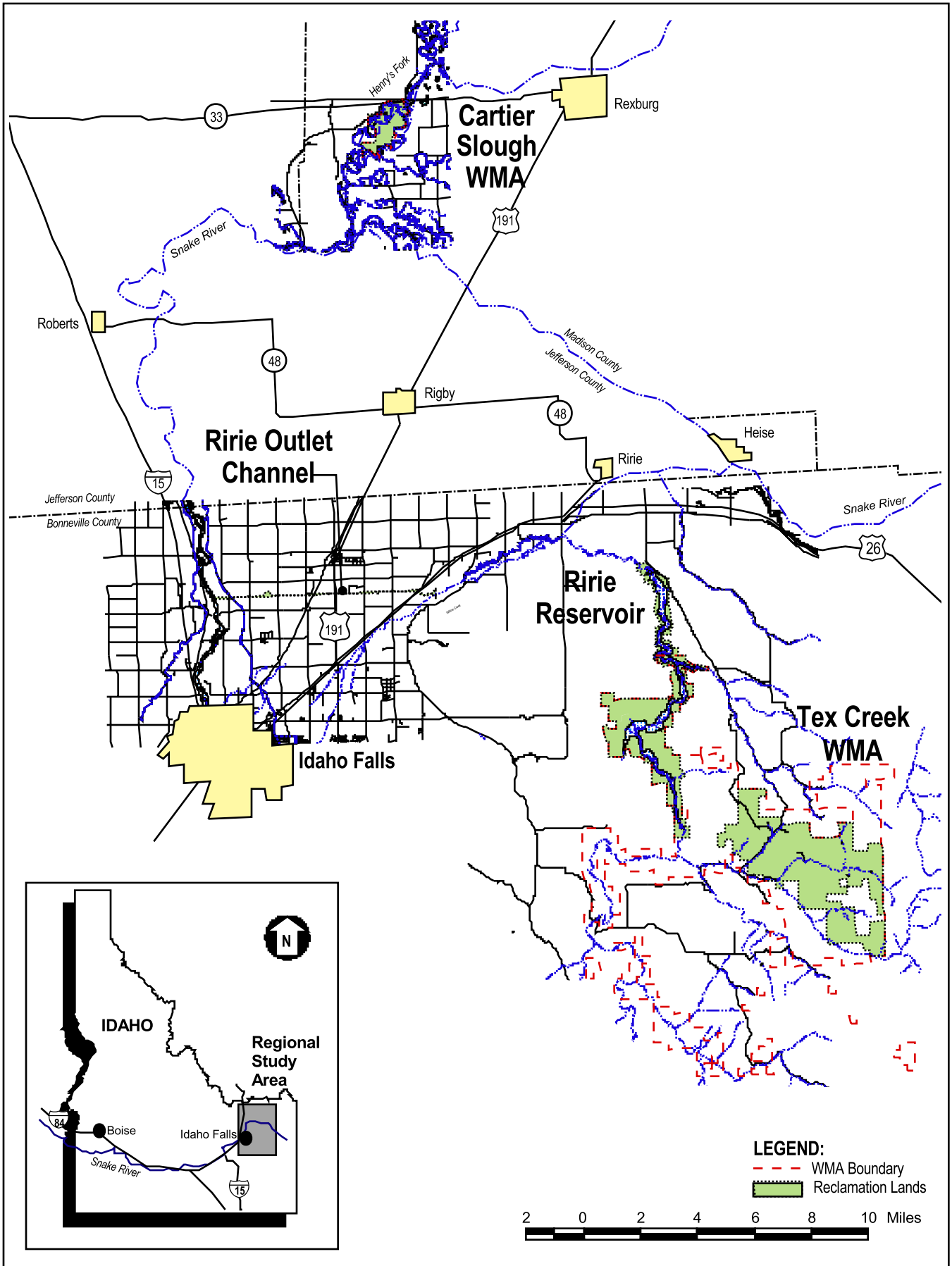
Resource Management Plan

U.S. Department of the Interior
Bureau of Reclamation
Pacific Northwest Region
Snake River Area Office



November 2001






Regional Location Map

RIRIE RESERVOIR Resource Management Plan



U.S. Department of the Interior
Bureau of Reclamation


Approved:



Area Manager
Snake River Area Office
Boise, Idaho

Nov. 8, 2001

Date



Regional Director
Pacific Northwest Region
Boise, Idaho

Nov. 9, 2001

Date

This Resource Management Plan was prepared by EDAW, CH2M Hill, and JPA under contract for the Department of the Interior, Bureau of Reclamation, Pacific Northwest Region.



Point of Contact:

Chris Ketchum, Resource Manager
Snake River Area Office
1359 Hansen Avenue
Burley ID 83318-1821
(208) 678-0461 ext. 34



Table of Contents

| | | |
|-----------|---|------|
| Chapter 1 | Introduction | 1-1 |
| 1.1 | RMP Program and Policy | 1-1 |
| 1.2 | Purpose and Scope of the Plan | 1-1 |
| 1.3 | Location and Description of the RMP Study Area | 1-2 |
| 1.4 | Project History | 1-8 |
| 1.5 | Overview of Public Involvement and Agency and Tribal Coordination | 1-8 |
| Chapter 2 | Existing Conditions | 2-1 |
| 2.1 | Natural Resources | 2-1 |
| 2.1.1 | Climate | 2-1 |
| 2.1.2 | Topography | 2-1 |
| 2.1.3 | Hydrology | 2-2 |
| 2.1.4 | Water Quality | 2-6 |
| 2.1.5 | Geology | 2-9 |
| 2.1.6 | Soils | 2-10 |
| 2.1.7 | Vegetation | 2-10 |
| 2.1.8 | Fish and Wildlife | 2-19 |
| 2.2 | Visual Resources | 2-29 |
| 2.3 | Noise | 2-32 |
| 2.4 | Cultural Resources | 2-32 |
| 2.5 | Sacred Sites | 2-33 |
| 2.6 | Indian Trust Assets | 2-34 |
| 2.7 | Socioeconomics | 2-34 |
| 2.7.1 | Demographic Profile | 2-34 |
| 2.7.2 | Economic Setting | 2-35 |
| Chapter 3 | Existing Land Use and Management | 3-1 |
| 3.1 | Project Facilities and General Operations | 3-1 |
| 3.2 | Land Status and Management | 3-1 |
| 3.2.1 | Reclamation Lands | 3-1 |
| 3.2.2 | Surrounding Lands | 3-7 |
| 3.3 | Agreements, Leases, and Easements | 3-8 |
| 3.3.1 | Agency Agreements | 3-8 |

3.3.2 Leases 3-11

3.3.3 Crossing Agreements 3-11

3.4 Recreation 3-11

3.4.1 Ririe Reservoir 3-11

3.4.2 Tex Creek WMA 3-14

3.4.3 Cartier Slough WMA 3-15

3.4.4 Ririe Outlet Channel 3-15

3.5 Access and Transportation 3-15

Chapter 4 The RMP Planning Process 4-1

4.1 Overview 4-1

4.2 Public Involvement Program 4-2

4.2.1 Newsbriefs 4-2

4.2.2 Public Meetings 4-6

4.2.3 Ad Hoc Work Group 4-6

4.2.4 World Wide Web 4-8

4.3 Tribal Consultation 4-8

4.3.1 Overview of Consultation with Tribes 4-8

4.3.2 National Historic Preservation Act Requirements 4-8

4.3.3 Indian Trust Assets 4-8

4.3.4 Sacred Sites 4-8

4.3.5 Laws and Regulations 4-9

4.4 Agency Coordination 4-9

Chapter 5 Resource Management 5-1

5.1 Introduction 5-1

5.2 Natural Resources 5-1

5.3 Cultural Resources, Sacred Sites, and Indian Trust Assets 5-10

5.4 Recreation 5-13

5.5 Access, Coordination, and Implementation 5-27

Chapter 6 Implementation Program 6-1

6.1 Introduction 6-1

6.2 Implementation Components 6-1

6.2.1 Management Actions 6-1

6.2.2 Prioritization 6-1

6.2.3 Timing and Sequencing 6-2

6.2.4 Agencies Responsible for Implementation 6-2

6.2.5 Funding 6-2

6.2.6 Monitoring 6-2

6.3 Amending and Updating the RMP 6-2

6.3.1 Amending Information in the RMP 6-2

6.3.2 Updating the RMP 6-3

Chapter 7 Glossary of Terms 7-1

Chapter 8 Bibliography 8-1

APPENDICES

Appendix A Problem Statement for the RMP

Appendix B Agency and Tribal Consultation/Coordination

Appendix C IDFG Fishery Management Goals

Appendix D IDFG Tex Creek WMA Management Plan Goals, Objectives, and Strategies

Appendix E IDFG Cartier Slough WMA Management Plan Goals, Objectives, and Strategies

Appendix F Legal Mandates

Appendix G Annual Reports and Activities

List of Tables

| | |
|--|------|
| Table 1.4-1 Tex Creek WMA Land Ownership | 1-9 |
| Table 2.1-1 Ririe Dam and Reservoir Discharge Capacity and Reservoir Storage | 2-5 |
| Table 2.1-2 Draft 303(d) Listed Water body Segments in the Vicinity of Ririe Reservoir | 2-6 |
| Table 2.1-3 Affected Soils at Ririe Reservoir, Tex Creek, and Cartier Slough | 2-13 |
| Table 2.1-4 Wetland and Riparian Cover Type Species in Tex Creek | 2-15 |
| Table 2.1-5 Common Plant Species in Cartier Slough | 2-19 |
| Table 2.1-6 Small Mammals Present in Tex Creek | 2-23 |
| Table 2.1-7 Common Bird Species in Tex Creek | 2-24 |
| Table 2.1-8 Abundant Bird Species in Tex Creek | 2-26 |
| Table 2.1-9 Game and Non-Game Fish Species Found in Ririe Reservoir | 2-27 |
| Table 3.2-1 Bureau of Reclamation Land Ownership (in Acres) | 3-2 |
| Table 4.1-1 Summary List of Issues | 4-3 |
| Table 4.2-1 Ad Hoc Work Group | 4-7 |
| Table 6.1-1 Natural Resources | 6-5 |
| Table 6.1-2 Cultural Resources | 6-10 |
| Table 6.1-3 Recreation Actions | 6-11 |
| Table 6.1-4 Access Management, Coordination, and Implementation | 6-19 |

List of Figures

| | | |
|--------------|---|------|
| Frontispiece | Regional Location Map | |
| Figure 1.3-1 | Area Map - Ririe Reservoir and Tex Creek WMA | 1-3 |
| Figure 1.3-2 | Area Map - Cartier Slough WMA | 1-5 |
| Figure 2.1-1 | Hydrology - Ririe Reservoir and Tex Creek WMA | 2-3 |
| Figure 2.1-2 | Hydrology - Cartier Slough WMA | 2-7 |
| Figure 2.1-3 | Vegetation - Ririe Reservoir and Tex Creek WMA | 2-11 |
| Figure 2.1-4 | Vegetation Cover of Cartier Slough and Surrounding Area | 2-17 |
| Figure 2.1-5 | Major Wildlife Areas of Ririe and Tex Creek WMA | 2-21 |
| Figure 3.2-1 | Land Status - Ririe Reservoir and Tex Creek WMA | 3-3 |
| Figure 3.2-2 | Land Status - Cartier Slough WMA | 3-5 |
| Figure 3.2-3 | Land Status - Ririe Outlet Channel | 3-9 |
| Figure 4.1-1 | RMP Planning Process Schedule and Work Plan | 4-1 |
| Figure 5.4-1 | Creekside Park and Vicinity | 5-15 |
| Figure 5.4-2 | Juniper Park and Vicinity | 5-17 |
| Figure 5.4-3 | Benchlands Boat-in Access | 5-19 |
| Figure 5.4-4 | Blacktail Park | 5-21 |

List of Photos

Photo 1-1 Ririe Reservoir looking south toward Juniper boat ramp and beyond 1-7

Photo 1-2 Entrance to Tex Creek WMA Headquarters. 1-7

Photo 1-3 Ririe Reservoir under construction in 1973. 1-8

Photo 1-4 Ririe Reservoir near completion in 1976. 1-8

Photo 2-1 Rolling topography of the Tex Creek WMA. 2-2

Photo 2-2 Relatively flat topography along the Ririe Outlet Channel. 2-2

Photo 2-3 Basalt cliffs on Ririe Reservoir. 2-10

Photo 2-4 Juniper-sagebrush vegetation common at Tex Creek 2-14

Photo 2-5 Wetland vegetation at Tex Creek. 2-15

Photo 2-6 Elk are common at Tex Creek where important winter range is provided. 2-23

Photo 2-7 Canyon lands as seen from Ririe Reservoir. 2-29

Photo 2-8 Low hills and shallow valleys of Tex Creek WMA. 2-31

Photo 2-9 Historic Red Granary at Tex Creek. 2-32

Photo 3-1 Pasture land adjacent to the Ririe Outlet Channel 3-7

Photo 3-2 Juniper Park is located upstream of Ririe Dam; Creekside Park is located
immediately downstream. 3-13

Photo 3-3 Blacktail Park has the only designated swimming area on the reservoir. 3-14

Photo 3-4 Picnic area at Benchlands Park. 3-14

Photo 4-1 The AHWG looking out over Meadow Creek and beyond to Ririe Reservoir. 4-6

Photo 4-2 The AHWG overlooking a sweeping vista of the Tex Creek WMA. 4-7

Acronyms and Abbreviations

| | |
|-------------------|---|
| AHWG | Ad Hoc Work Group |
| B.P. | Before present |
| BCDPR | Bonneville County Department of Parks & Recreation |
| BLM | Bureau of Land Management |
| BMP | Best Management Practice |
| CAR | Coordination Act Report |
| Cartier Slough | Cartier Slough Wildlife Management Area |
| CFR | Code of Federal Regulations |
| cfs | cubic feet per second |
| COE | U.S. Army Corps of Engineers |
| CRMP | Cultural Resources Management Plan |
| DOI | Department of the Interior |
| EA | Environmental Assessment |
| EPA | Environmental Protection Agency |
| ESA | Endangered Species Act |
| FS | U.S. Forest Service |
| FWCA | Fish and Wildlife Coordination Act |
| FWS | U.S. Fish and Wildlife Service |
| GUI | Graphic User Interface |
| HUC | Hydrologic Unit Code |
| IDEQ | Idaho Department of Environmental Quality |
| IDFG | Idaho Department of Fish and Game |
| IDL | Idaho Department of Lands |
| IDPR | Idaho Department of Parks and Recreation |
| INEEL | Idaho National Engineering and Environmental Laboratory |
| IPM | Integrated Pest Management |
| IRMS | Integrated Resource Management System |
| ITAs | Indian Trust Assets |
| ITD | Idaho Transportation Department |
| MOA | Memorandum of Agreement |
| NAGPRA | Native American Graves Protection and Repatriation Act |
| National Register | National Register of Historic Places |
| NEPA | National Environmental Policy Act |
| NHPA | National Historic Preservation Act |
| NPDES | National Pollutant Discharge Elimination System |
| NRCS | Natural Resources Conservation Service |
| ORV | Off-road vehicle |
| P.L. | Public Law |
| PN | Pacific Northwest |
| RCC | Recreational Carrying Capacity |
| Reclamation | U.S. Bureau of Reclamation |
| RI | Reclamation Instructions |
| RMEF | Rocky Mountain Elk Foundation |

Acronyms and Abbreviations

| | |
|-----------|---|
| RMP | Resource Management Plan |
| RV | Recreational Vehicle |
| scuba | self-contained underwater breathing apparatus |
| SH | State Highway |
| SHPO | State Historic Preservation Office |
| TCPs | Traditional Cultural Properties |
| TES | Threatened, Endangered, or Sensitive |
| Tex Creek | Tex Creek Wildlife Management Area |
| TMDL | Total Maximum Daily Load |
| UFAS | Uniform Federal Accessibility Standards |
| USDA | U.S. Department of Agriculture |
| USGS | U.S. Geological Survey |
| WAG | Watershed Advisory Group |
| WMAs | Wildlife Management Areas |