

Figure 1. Generalized index map of the southwestern part of California showing the location of the Santa Barbara coastal plain region and nearby major tectonic faults.

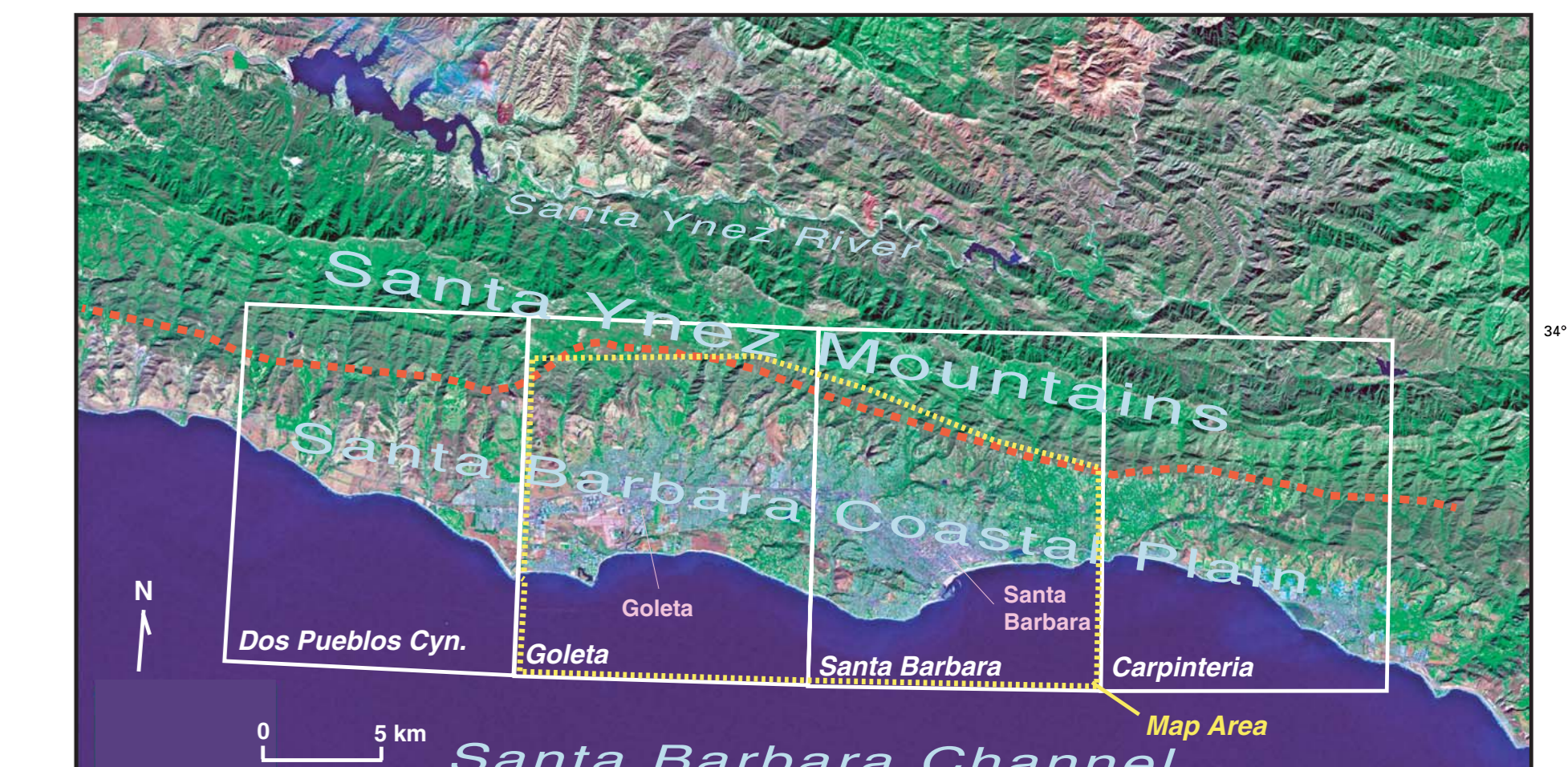


Figure 2. Landscape 7 image of Santa Barbara coastal plain region showing location of map area and component 7.5 quadrangles. Approximate northern boundary of Santa Barbara fold fault belt is shown by dashed red line.

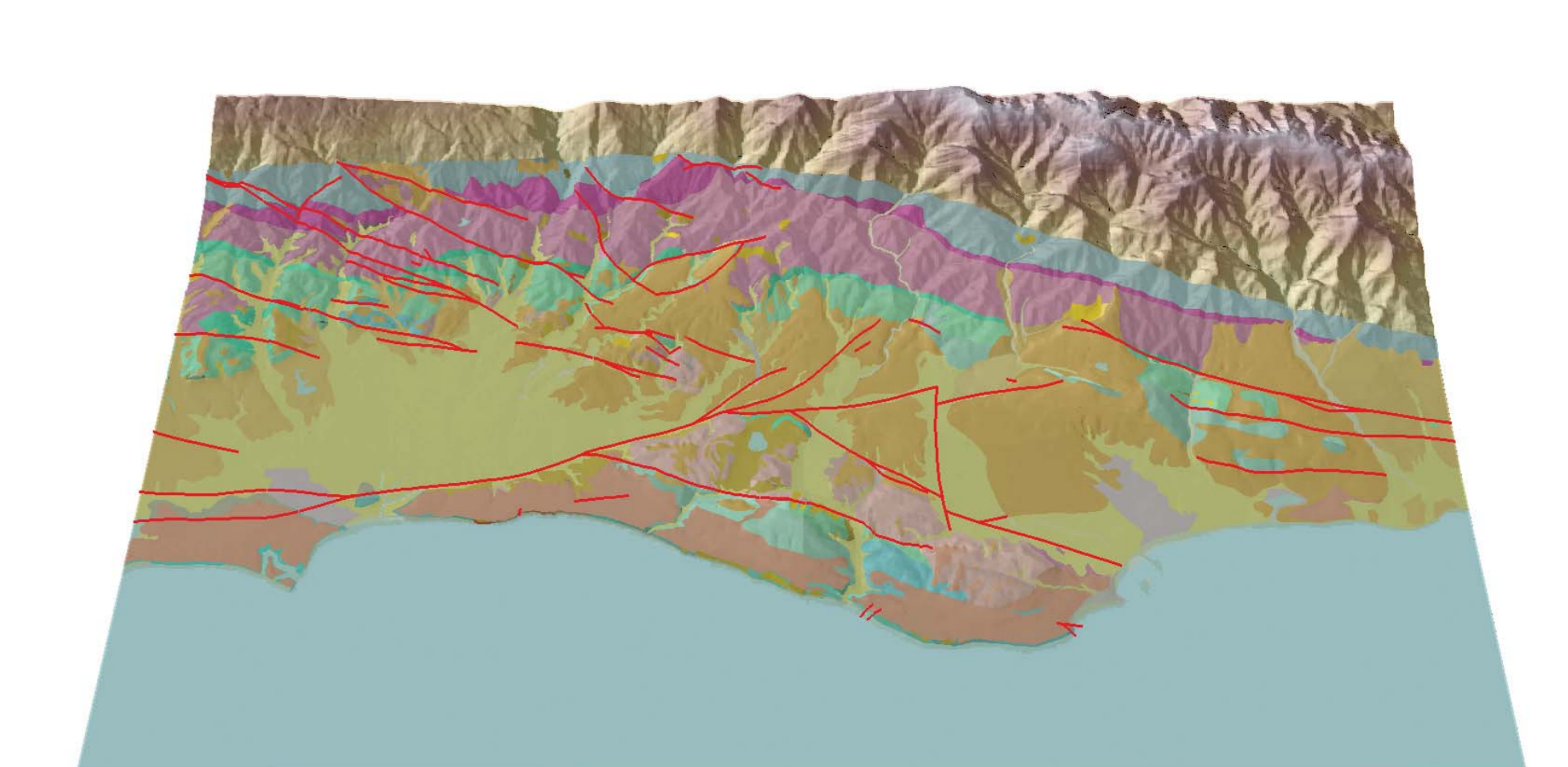


Figure 3. (a) Digital Elevation Model (DEM) (30 m resolution) shaded-relief image of Santa Barbara coastal plain area as viewed from the north and illuminated from the northeast. (b) Mapped geology draped over DEM shown in (a) with faults shown in red; concealed and exposed faults are not distinguished.

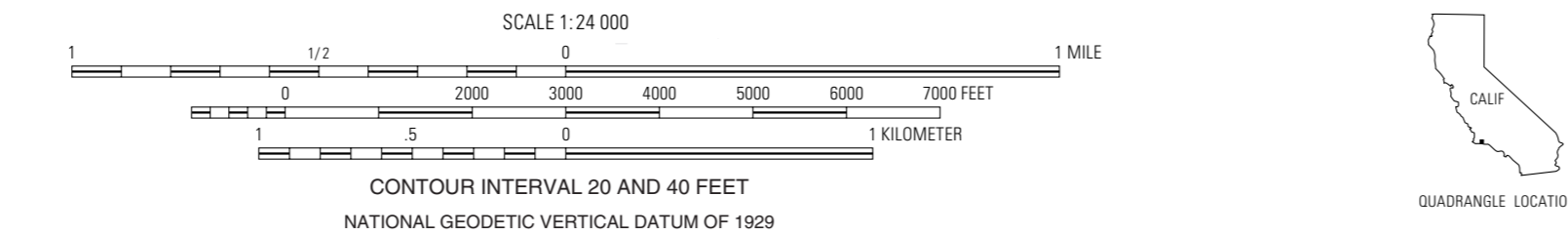
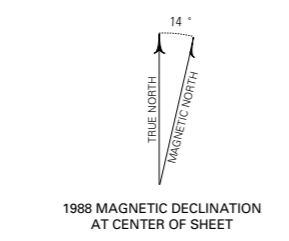
PRELIMINARY GEOLOGIC MAP OF THE SANTA BARBARA COASTAL PLAIN AREA, SANTA BARBARA COUNTY, CALIFORNIA

By

Scott A. Minor, Karl S. Kellogg, Richard G. Stanley, Paul Stone, Charles L. Powell, II,
Larry D. Gurrola, Amy J. Selting, and Theodore R. Brandt

2006

Base from U.S. Geological Survey, 1950 and 1962, photo-revised 1988.
Polyconic projection, 1927 North American Datum
10,000-foot grid ticks. California Coordinate System, zone 5
1000-meter Universal Transverse Mercator grid, zone 11



Geology was mapped 1999-2006.
Digital Cartography by Theodore R. Brandt.
This map is preliminary and has not been
reviewed for conformity with U.S. Geological
Survey editorial standards or with the North
American Stratigraphic Code.

Any use of trade names in this publication is for
descriptive purposes only and does not imply
endorsement by the U.S. Geological Survey.
This map was produced on request, directly from
digital files, as an electronic print.
For sale by U.S. Geological Survey Information Services
Box 2428, Federal Center, Denver, CO 80225
1-888-GSA-0362
ARC/INFO coverages and a PDF file for this map are available at
<http://geology.cr.usgs.gov/openmood/pubs/0211/>