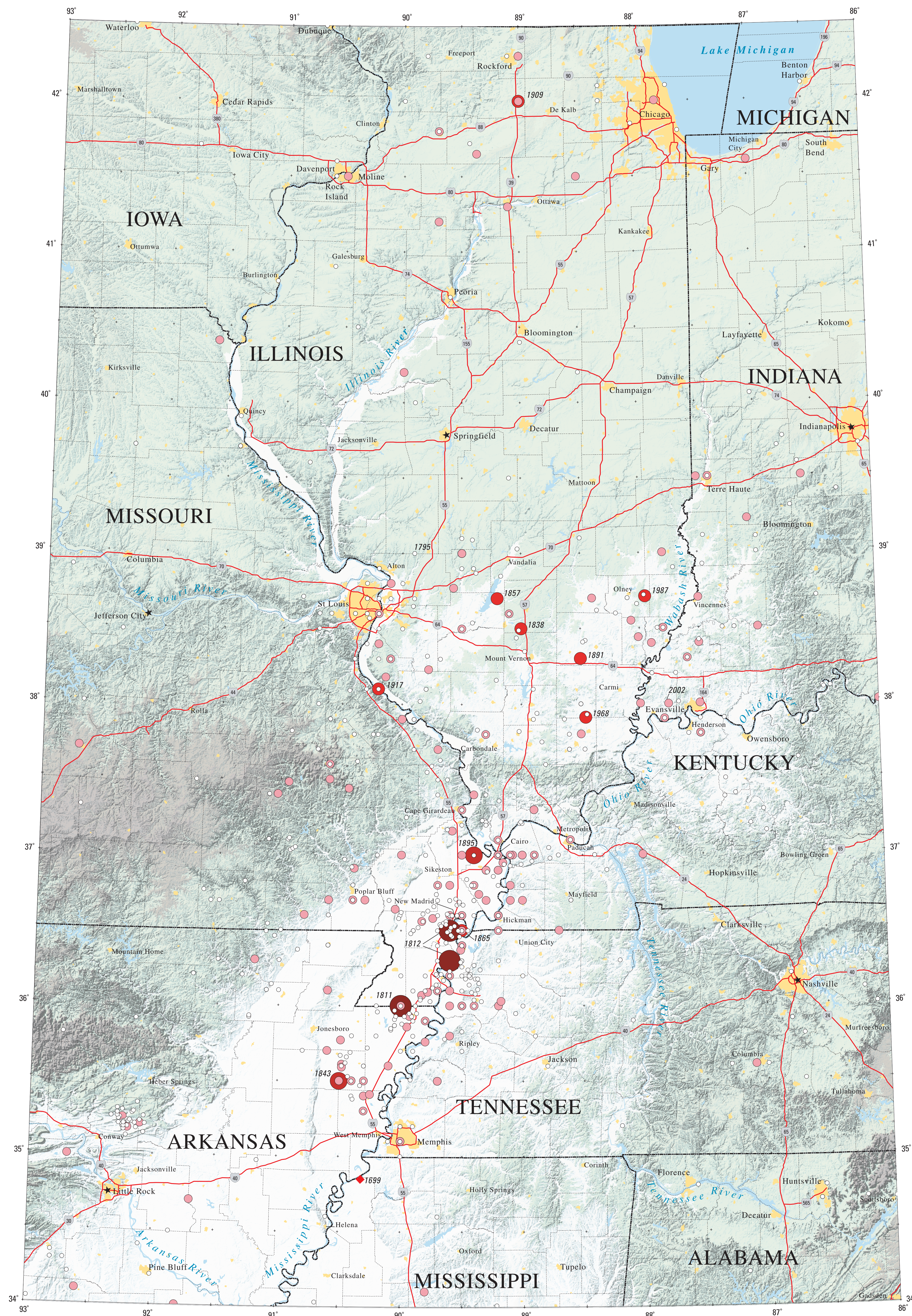
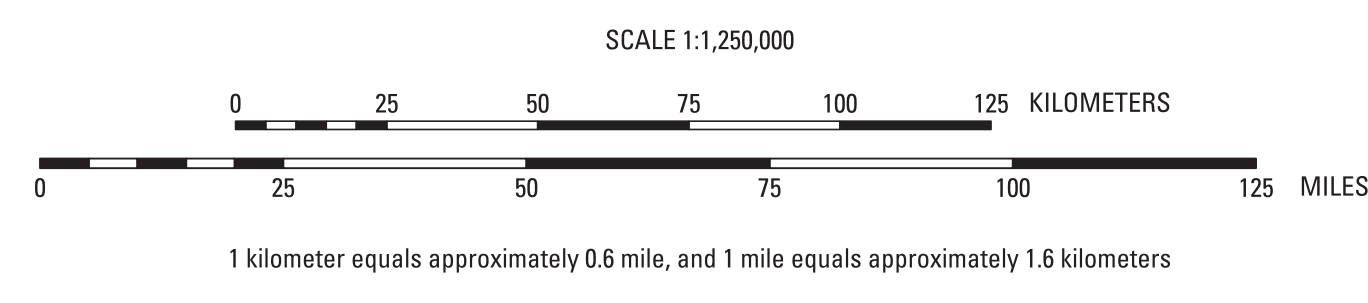


This earthquake map forms the middle portion of a larger poster: "Earthquakes in the Central United States—1699-2002", U.S. Geological Survey Geologic Investigations Map I-2812, by Wheeler, R.L., Omdahl, E.M., Dart, R.L., Wilkerson, G.D., and Bradford, R.H. We provide the earthquake map by itself for persons wishing to use it as a base map—you can superimpose your own additional information, and distribute the result for teaching or scientific purposes. If you do this, there is no cost but please cite the source poster. For more information about these earthquakes, see the entire poster. You can get price and ordering information about the poster by inquiring at 1-888-ASK-USGS, and you can download its PDF file free from URL <http://usgs.pubs.gov>



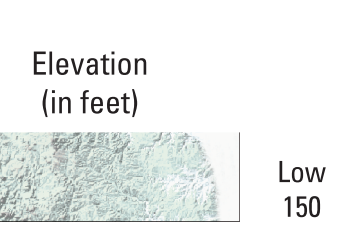
EARTHQUAKE MAGNITUDE

- 7.0 or greater
- 6.0-6.9
- 5.0-5.9
- 4.0-4.9
- 3.0-3.9



EXPLANATION

- County boundary
- State boundary
- Ⓜ Interstate highway
- Urban area
- ★ State capital
- ◆ Probable site at which 1699 earthquake was felt. See "About This Map"



Shaded-relief base produced by the United States Geological Survey from elevation data in the National Map. Base created with 8x vertical exaggeration from U.S. Geological Survey National Elevation Dataset at 30-m resolution, resampled at 30-m. Albers equal-area projection, standard parallels 30°N and 30°S N., and central meridian 89°30' W. Latitude of projection's origin is 0°.