

**PREAMBLE  
TO THE  
SUPERINTENDENT'S COMPENDIUM  
2009**

**GLACIER BAY NATIONAL PARK AND PRESERVE**

**PREAMBLE**

The proposed compendium was available for comment from January 1 – February 15, 2009. The following preamble addresses comments received by the park on the proposed compendium. Groups or organizations who commented are identified in the discussion.

- Glacier Bay National Park and Preserve did not receive any public comments on the 2009 proposed compendium.

**GLACIER BAY NATIONAL PARK AND PRESERVE  
COMPENDIUM  
2009**

National Park Service (NPS) regulations applicable to the protection and equitable public use of units of the National Park System grant specified authorities to a park superintendent to allow or restrict certain activities. NPS regulations are found in Titles 36 and 43 of the Code of Federal Regulations (CFR) and created under authority and responsibility granted the Secretary of Interior in Titles 16 and 18 of the United States Code. The following compendium comprises a listing of NPS regulations that provide the Superintendent with discretionary authority to make designations or impose public use restrictions or conditions in park areas. The applicability and scope of the compendium is articulated in 36 CFR Sections 1.2 and 13.2, and 43 CFR Section 36.1.

The larger body of NPS regulations that do not provide discretionary authority to the Superintendent is not cited in this compendium. A complete and accurate picture of regulations governing use and protection of the unit can only be gained by viewing this compendium in context with the full body of applicable regulations found in Titles 36 and 43 CFR. *Please contact Glacier Bay National Park and Preserve, Gustavus, Alaska at (907) 697-2230 for questions relating to information provided in this compendium.*

**TITLE 36 CODE OF FEDERAL REGULATIONS**

**PART 1. GENERAL PROVISIONS**

**1.5 Closures and public use limits**

**(a)(1) Visiting hours, public use limits, closures**

Sledding is permitted on park roads if persons or other traffic control devices are posted to warn approaching motorists.

*This restriction is intended to provide maximum safety to sledders and motorists using the park road.*

See specific sections in this document for additional information regarding visiting hours, public use limits, and closures.

**(a)(2) Designated areas for specific use or activity or conditions**

See specific sections in this document for additional information regarding designated areas and conditions for engaging in certain activities.

**1.6(f) Compilation of activities requiring a permit**

- Scientific research, 1.5
- Collecting research specimens, 2.5
- Operating a power saw in developed areas, 2.12(a)(2)
- Operating a portable motor or engine in undeveloped areas, 2.12(a)(3)
- Operating a public address system, 2.12(a)(4)

- Air delivery, 2.17(a)(3)
- Noncommercial soliciting, 2.37
- Using, possessing, storing, or transporting explosives, blasting agents, or explosive materials, 2.38(a)
- Using or possessing fireworks and firecrackers, 2.38(b)
- Special events, 2.50(a)
- Public assemblies and meetings, 2.51(a)
- Sale and distribution of printed matter, 2.52(a)
- Grazing, 2.60(a)(1), (2)
- Residing on federal lands, 2.61(a)
- Installing a monument or other commemorative installation, 2.62(a)
- Nonmotorized watercraft on the Alsek River, 3.3, 43 CFR 36.11(d), (h)
- Towing a person using a parasail, hang glider, or other airborne device, 3.12(b)
- Removing sunken, grounded, or disabled vessels, 3.14(a)
- Operating a submersible, 3.19
- Commercial notices or advertisements, 5.1
- Commercial operations, 5.3
- Commercial photography or filming, 5.5
- Construction or repair of any building, structure, facility, road, trail, or airstrip on federal lands, 5.7
- Mining operations (9.9(a)) or an approved Plan of Operations (in lieu of permit))
- Cabins on federal lands, 13.100-13.188
- Cutting of live standing timber greater than 3 inches in diameter for non-commercial subsistence uses, 13.485(a)(1)
- Commercial fishing in the marine waters of Glacier Bay National Park, 13.1132 (b)
- Private vessels in Glacier Bay marine waters unless exempted under 13.1156, (13.1152)
- Cruise ships, tour vessels, and charter vessel in Glacier Bay marine waters unless exempted under 13.1156, (13.1154)
- Camping in Glacier Bay Proper, 13.1116
- Access to inholdings where access is not made by aircraft, snowmachine, motorboat or non-motorized surface transportation, 43 CFR 36.10(b)
- Salvaging, removing, possessing aircraft, 43 CFR 36.11(f)(3)(ii)
- Helicopter landings, 43 CFR 36.11(f)(4)
- Temporary access across federal land for survey, geophysical or exploratory work, 43 CFR 36.12(c)

## **PART 2. RESOURCE PROTECTION, PUBLIC USE AND RECREATION**

### **2.1(a)(4) Designated areas for collection of dead wood on the ground for firewood**

Superseded by 13.35(c)(4), 13.35(d), 13.85(b), 13.1184.

### **2.1(a)(5) Designated areas and conditions for walking on, climbing, entering, ascending, descending, or traversing an archeological or cultural resource, monument, or statue**

No designated areas or conditions.

**2.1(b) Designated trails**

No restrictions on walking or hiking.

**2.1(c)(1)-(3) Designated fruits, nuts, berries, and unoccupied seashells to harvest by hand and collection restrictions**

Superseded in part by 13.35(c) and 13.485(b).

**2.2(d) Established conditions and procedures for transporting lawfully taken wildlife through park areas**

See also 13.40(d)(5).

**2.2(e) Designated areas for wildlife viewing with artificial light**

No areas designated for closure.

**2.3(d)(2) Fresh waters designated as open to bait fishing with live or dead minnows or other bait fish, amphibians, nonpreserved fish eggs or fish roe**

No waters are designated as open to fishing with the types of bait identified above. Other types of bait may be used in accordance with state law. Subsistence fishing by federally qualified rural residents is allowed in accordance with 36 CFR part 13 and 50 CFR part 100.

**2.3(d)(8) Designated areas open for fishing from motor road bridges and public boat docks**

All areas are designated as open for fishing from motor road bridges and boat docks except the Bartlett Cove fuel dock.

*By Coast Guard regulation, a public fuel dock may only be occupied by individuals engaged in the act of fueling. The Bartlett Cove fuel dock may only be used while fueling a vessel.*

**2.4(a)(2)(i) Carrying, using, or possessing weapons at designated locations and times**

Weapons and traps may not be carried or used within areas designated as in the former Glacier Bay National Monument. (Note: see 2.4(a)(3), which authorizes possession of unloaded weapons that are either inoperable or inaccessible weapons in vehicles and vessels). Superseded by 13.30(b)-(f) in the Park additions and Preserve.

*The intent of this requirement is to provide maximum wildlife protection by not allowing the carrying of weapons or traps within the Park unless the weapon is broken down or made inaccessible during transport. Weapons or traps may be carried within the Preserve during times the taking of fish or wildlife is authorized by State law.*

**2.10(a) Camping: conditions and permits**

Superseded in part by 13.25(a), 13.1124(a).

**2.10(d) Food storage: designated areas and methods**

- (1) Definition: A *bear resistant container* (BRC) means an item constructed to prevent access by a bear. BRC's include—
- Items approved by the Department of Interior and Agriculture's Interagency Grizzly Bear Committee ( <http://www.igbconline.org/html/safety.html>);
  - Any additional items listed by the State of Alaska, Department of Fish and Game, Division of Wildlife Conservation (<http://www.wildlife.alaska.gov/index.cfm?adfg=bears.containers> ), with the concurrence of the Superintendent;
  - Items or methods approved by the Superintendent.
- (2) Throughout the park, all food (except legally taken game) and beverages, food and beverage containers, garbage, harvested fish and equipment used to cook or store food must be stored in a bear resistant container (BRC) or secured—
- Within a hard sided building;
  - Within lockable and hard sided section of a vehicle, vessel, or aircraft; or
  - By caching a minimum of 100 feet from camp and suspending at least 10 feet above the ground and 4 feet horizontally from a post, tree trunk or other object on a line or branch that will not support a bear's weight.

Note: This does not apply to:

- Clean dishes and cooking equipment that are free of food odors. We strongly recommend that these items be securely stored; but clean and odor free items are not required to be stored in secure containers.
- Food that is being transported, consumed or prepared for consumption.
- The use of bait for trapping and hunting under the provisions of state and federal law.

For the Bartlett Cove Developed Area, see 13.1124(b)-(c).

*The intent of these designations is to prevent bears and other wildlife from obtaining and becoming conditioned to food and garbage, thus protecting wildlife and park visitors alike. We strongly recommend that dishes and cooking equipment be securely stored; but clean and odor free items are not required to be stored in secure containers. Ice chests and coolers, tents, dry bags or stuff sacks, plastic packing boxes (Totes, Action Packers, etc) and unmodified kayaks are not generally approved as BRC. The park offers bear resistant containers for temporary use to the public. The containers are free of charge and can be picked up at the park's visitor center in Bartlett Cove.*

See also 13.1124.

## **2.11 Picnicking: designated areas**

Superseded by 13.26.

## **2.13(a)(1) Fires: designated areas and conditions**

Campfires may be lighted and maintained in the following areas:

Within 1 mile of Bartlett Cove – Unless otherwise authorized by the superintendent, fires are only allowed in the designated campground beach fire ring(s).

All Other Areas - Fires are allowed in backcountry areas below the high tide line, or more than one-quarter mile from marine shorelines. For the purposes of this section, *high tide* is defined as the line delineated in the intertidal area by the last high water mark of the preceding highest tide.

All trash (tin foil, burnt food, glass, and cans) must be removed from the fire site after use.

*The intent of this requirement is to allow for fires in the backcountry while ensuring that resource impacts associated with fires are minimized. The geography of the areas suitable for camping has caused repetitive use of the same campsites. The use of fire pans and constructing fires below the high tide line helps ensure that hardened campfire sites and buildup of ash piles will not occur.*

For the Alsek Corridor, see 36 CFR 13.1108.

**2.14(a)(2) Sanitation and refuse: conditions using government receptacles**

Dumping of refuse brought into the Park or Preserve in NPS trash receptacles is prohibited unless otherwise authorized by the superintendent. This does not preclude PRIVATE boaters from using trash receptacles at the Public Use Dock.

*This requirement is intended to ensure the refuse handled by the park is generated by activities occurring within the park.*

**2.14(a)(5) Sanitation: designated areas for bathing and washing**

No designated areas; therefore, unless allowed by the Superintendent, bathing and washing of cooking utensils, food and other property at all public water outlets or fixtures is prohibited.

**2.14(a)(7) Sanitation: designated areas for disposal of fish remains**

There are no designated areas.

*Fish remains may not be disposed of on either land or water within 200 feet of public boat docks or designated swimming beaches, or within developed areas for reasons of public health and safety.*

**2.14(a)(9) Sanitation: designated areas for disposal of human waste in undeveloped areas**

Human body waste will either be removed as trash or deposited in cat-holes dug at least 100 feet from any surface freshwater source and at least 6 inches deep.

*This requirement is intended to ensure that proper disposal of human waste occurs in the backcountry to protect water quality and visitor safety.*

**2.14(b) Sanitation: conditions concerning disposal, carrying out of human waste**

Toilet paper will be burned or removed as trash.

**2.15(a)(1) Areas designated as closed to pets**

Superseded by 36 CFR 13.1106

*In all areas where pets are allowed, pets must be leashed or physically restrained at all times.*

**2.15(a)(3) Conditions for leaving pets unattended and tied to an object**

No conditions at present.

*Leaving pets unattended and tied to an object is prohibited.*

**2.15(a)(5) Pet excrement disposal conditions**

No conditions at present.

**2.15(b) Conditions for using dogs in support of hunting activities**

No conditions at present.

**2.16 (a)-(c) Horses and pack animals**

Superseded by 43 CFR 36.11(e).

Access for subsistence purposes under 36 CFR 13.460(a) supersedes this section.

**2.17(a)(1) Aircraft operation**

Superseded by 43 CFR 36.11(f)(1).

**2.17(a)(2) Aircraft operation near docks, piers, swimming beaches and other designated areas**

No areas prohibited at present. Aircraft access to the Public Use Dock in Bartlett Cove is permitted. See also 13.1122 regarding dock use restrictions.

**2.17(c)(1) Conditions for removing downed aircraft**

Superseded by 43 CFR 36.11(f)(3)(ii).

**2.18(c) Snowmobiles: designated areas for use**

No areas designated for snowmachine use.

Superseded in part by 43 CFR 36.11(c).

Superseded by 36 CFR 13.460 for subsistence uses.

**2.19(a) Winter activities on roads and in parking areas: designated areas**

Roads and parking areas open to vehicle traffic in the winter are designated as open to winter activities in 2.19(a).

**2.19(b) The towing of persons on skis, sleds, or other sliding devices by motor vehicle or snowmobile is prohibited, except in designated areas or routes**

No designated areas or routes.

## **2.20 Skating and skateboards**

Superseded by 43 CFR 36.11(e).

## **2.21 Smoking**

All public buildings are closed to smoking unless specifically permitted and signed as a designated smoking area. Smoking is prohibited on the Fuel Dock and within 100 feet of the underground fuel storage facility.

*These restrictions are intended to protect public safety from fire or explosion around fuel storage and dispensing facilities on and adjacent to the dock.*

## **2.22 Property: leaving property unattended for 24 hours**

Superseded by 13.45, 13.1122(c).

## **2.35(a)(3)(i) Alcoholic beverages: areas designated as closed to consumption**

No areas designated as closed.

## **2.38(b) Fireworks: permits, designated areas, and conditions**

No areas designated for use of fireworks.

## **2.51(e) Public assemblies/meetings: designated areas for public assemblies**

All areas are open to public assemblies with a permit from the superintendent.

## **2.52(e) Sale and distribution of printed matter: areas designated for such use**

All areas are open to distribution with a permit from the superintendent.

## **2.60(a)(3) Designated areas for grazing**

No areas designated for agricultural grazing of livestock in Glacier Bay National Park.

## **2.62(b) Memorialization: designation of areas for scattering ashes**

All areas are open to scattering of ashes without a permit.

# **PART 3. BOATING AND WATER USE ACTIVITIES**

## **3.3 Permits**

- Commercial fishing vessels in the marine waters of Glacier Bay National Park must have a permit pursuant to (13.1132)
- Private vessels in Glacier Bay marine waters must have a permit unless exempted under 13.1156 pursuant to 13.1152
- Cruise ships, tour vessels, and charter vessel in Glacier Bay marine waters must have a permit unless exempted under 13.1156 pursuant to 13.1154
- Vessels- A permit is required for non-commercial use within the Alsek River corridor above Gateway Knob between May 1 through September 30.



See also Private Vessel Permits, 13.1152-13.1154.

**3.7 Personal Flotation Devices: designated times and/or activities**

No designated times or activities. PFDs must be worn in accordance with 33 CFR part 175.

**3.8(a)(2) Boating, prohibited operations: designated launching areas**

All areas are open to launching of boats.

**3.8(a)(4) Operating a vessel in excess of designated length, width, or horsepower**

No designations at present.

**3.8(b)(3) Operating a vessel in excess of flat wake speed in designated areas**

Operating a vessel in excess of 5 mph or creating a wake within 300 ft. of the Bartlett Cove Public Use Dock is prohibited. (newly designated area)

*Vessels operated at excessive speeds or creating wakes in proximity to the Bartlett Cove Public Use Dock create safety hazards and cause property damage to park visitors and their vessels while at the dock.*

**3.12(a) Water skiing: designated waters**

No areas designated open.

**3.14(a) Conditions for removing sunken, grounded, or disabled vessels**

A permit is required from the Superintendent before sunken, grounded, or disabled vessels may be removed from the park; violation of the terms and conditions of the permit is prohibited.

*This requirement allows the Superintendent to establish terms and conditions for salvage operations as necessary to protect resources, provide for public safety, and minimize impacts on visitors.*

**3.16 Swimming and wading: areas designated as closed**

All areas are open to swimming and wading.

**3.17(a) Designated swimming areas and beaches**

No designated areas.

**3.17(c) Use or possession of flotation devices, glass containers, kites, or incompatible activities in swimming areas or beaches**

No restrictions at present.

**3.18(a) SCUBA and underwater diving: closures and restrictions**

SCUBA diving is authorized at the Public Use Dock and in the mooring area at Bartlett Cove to inspect and repair vessels, or retrieve equipment.

## **PART 4. VEHICLES AND TRAFFIC SAFETY**

### **4.10 Routes or areas designated for off-road motor vehicle use in Preserves**

See 36 CFR 13.1109

### **4.11(a) Load weight and size limits: permit requirements and restrictive conditions**

See 13.1124(b).

### **4.21(b)-(c) Speed limits: designation of a different speed limit**

The speed limit in the Bartlett Cove developed area, and on the park road between Bartlett Cove and Gustavus, is 20 mph, except as otherwise posted

*Road improvements (paving, grading, and engineering) which have brought the road in the developed area up to Federal Highway standards, along with an assessment period to monitor safety and traffic flow, allow the NPS to increase the speed limit 5 mph along this section of road without unduly sacrificing safety or resource protection concerns.*

### **4.30(a) Routes designated as open to bicycles**

Superseded by 13.1126, 43 CFR 36.11(e).

### **4.30(d)(1) Wilderness closed to bicycle use**

Superseded by 43 CFR 36.11(e).

### **4.31 Hitchhiking: designated areas**

All areas are open to hitchhiking.

## **PART 5. COMMERCIAL AND PRIVATE OPERATIONS**

### **5.7 Construction of buildings, roads, trails, airstrips, or other facilities**

Maintenance of established landing strips utilizing non-motorized hand tools is not considered construction or repair and no permit is required.

## **PART 13. ALASKA REGULATIONS**

### **13.25(a)(1) Temporary closures and restrictions to camping**

- Group size is limited to a maximum of 12 persons. The superintendent may authorize an exception for educational groups.  
*This restriction is also derived from the Wilderness Visitor Use Management Plan and is intended to minimize impacts on resources and other park visitors.*
- The landmass from Wolf Creek to a point directly east of the southern tip of Garforth Island including Puffin Island and the two unnamed islands in North Sandy Cove, and the one unnamed island in South Sandy Cove, from sea level to any elevation is

closed to overnight camping due to a high concentration of bears, May 1 - August 15.  
(See Appendix D)

*This restriction is intended to minimize conflicts between backcountry campers and bears in an area habitually used and important to bear. The restriction on overnight camping does not preclude day use of this area for hiking and other activities.*

For the Alsek Corridor, see 36 CFR 13.1108

**13.25(a)(2) Site time limits: authorization to exceed 14 day limit at one location**

See also 13.1116.

**13.25(a)(3) Designated campgrounds: restrictions, terms, and conditions**

See also 13.1124(a).

**13.26 Picnicking-areas where prohibited or otherwise restricted**

No restrictions at present.

**13.30(b) Temporary closures or restrictions to carrying, possessing, or using firearms**

There are no additional restrictions.

See also 2.4(a)(2)(i) for the former Glacier Bay National Monument.

**13.35(d) Collection of dead standing wood: areas designated as open and conditions for collection**

No designated areas or conditions at present.

**13.35(f)(1) Natural features: size and quantity restrictions for collection**

No restrictions at present.

**13.35(f)(2) Natural features: closures or restrictions due to adverse impacts**

No closures or restrictions at present.

**13.40(c) Restrictions on activities related to commercial fishing rights or privileges in the Dry Bay area**

See 36 CFR 13.1109

**13.40(e) Temporary closures or restrictions to the taking of fish and wildlife**

No closures at present where hunting is authorized. See applicable State of Alaska hunting regulations. Hunting is prohibited in Glacier Bay National Park.

**13.45(b)(1)-(6) Exceptions to unattended or abandoned property**

Superintendent authorizations for exceptions for unattended or abandoned property are made on a case by case basis. Contact park headquarters for more information.

**13.45(c) Designated areas where personal property may not be left unattended for any time period, limits on amounts and types, manner in which property is stored**

- Caches left for more than 30 days will be considered abandoned and may be removed

or impounded by Park Rangers. A Special Use Permit may be requested from the Superintendent for unique or special circumstances that require a cache to be left in place for more than 30 days. All such requests must be made in writing to the Superintendent at Glacier Bay National Park & Preserve, P.O. Box 140, Gustavus, AK 99664.

*Experience indicates that caches older than 30 days are usually abandoned. This restriction is intended to limit abandonment of personal property in the park and impacts to resources and other park users. Provisions are provided for longer-term storage of gear where warranted with permission of the Superintendent. A written determination of need per 36 CFR § 1.5(c) is on file at park headquarters.*

- Fuel caches will be limited to one location, and may contain no more than 10 gallons of fuel or any combination of fuel types.
- Parking.
  - Main parking lot: Leaving vehicles, trailers, or other property unattended longer than 24 hours in the main parking lot adjacent to the Bartlett Cove Public Use dock is prohibited.
  - Upper lot and overflow lots: Leaving vehicles, trailers, or other property unattended longer than 14 days in the upper parking lot above the park fuel dock or in the overflow lot near the park housing area is prohibited.
  - Vehicles, trailers, or other property must be removed from the parking lots for at least 12 hours between parking limit periods.
- Personal kayaks and boats may not be left unattended on beaches within the Bartlett Cove Developed Area outside of designated areas. The designated areas are: above the intertidal area on provided racks beneath the fuel dock, or within 150 yards of the administrative dock.

*The small sandy beach located between the Public Use Dock and the boat launch ramp is considered ceremonial by the Huna Tlingit, and carries significant cultural importance to the native community. Out of respect for the wishes of the original people of Glacier Bay, the NPS is requiring storage of kayaks and other vessels be moved from this beach to a nearby location which does not conflict with this need. Designated locations for kayak and small boat storage in the Bartlett Cove Developed Area are necessary to maintain the visual aesthetic values of this highly visited area, and to prevent proliferation of small craft scattered all along the shoreline which impedes wildlife and human foot traffic, and damages vegetation.*

### **13.50(h) Facility closures and restrictions**

No restrictions at present.

### **13.122 Established conditions for removal of cabin for which a cabin permit has been denied, expired, or revoked**

No conditions established at present (may require access permit).

### **13.160 Designated existing cabins, shelters or temporary facilities that may be shared for subsistence uses without a permit**

During the Federal subsistence moose hunt in the fall, the East River Public Use Cabin at Dry Bay may be reserved by local rural residents at no charge via the NPS Office in Yakutat.

*This provision allows subsistence users to share and use the East River Public Use Cabin during the federal subsistence moose hunt.*

**13.166 Established conditions and standards governing the use and construction of temporary structures and facilities for subsistence purposes, published annually**

There is no fee for the use of the East River Cabins for subsistence purposes during the fall moose hunt. The cabin must be reserved through the NPS office in Yakutat.

**13.170 Designated cabins or other structures for general public use**

The East River cabin in the Preserve is designated as a public use cabin.

*The East River cabin is a short-term, public use cabin.*

**13.172 Established conditions and allocation system to manage the use of designated public use cabins**

A reservation and permit, available through the NPS Ranger Station in Yakutat, are required for use of the East River Public Use Cabin. An overnight public use fee will be charged for the cabin, with exception noted under § 13.160 of this compendium.

**13.188(b) Established conditions for removal of temporary facility used in excess of 14 days**

Individuals must remove all temporary facilities not under permit and all personal property. Sites must be returned to its natural condition.

*These conditions are intended to protect the park from impacts to vegetation and soil and to ensure that personal items are not left in the park.*

**13.460 Closures or restrictions to the use of snowmobiles, motorboats, dog teams, and other means of surface transportation traditionally employed by local rural residents engaged in subsistence uses**

See also 36 CFR 2.16, 2.17, 2.18, 3.6, 4.10, 4.30; 43 CFR 36.11(c)-(e).

**13.485(a)(1) Permit specifications for harvesting standing timber greater than 3" diameter for subsistence purposes (house logs & firewood)**

Cutting of live standing trees greater than 3" in the Park is prohibited. The superintendent may allow subsistence harvest of live standing trees greater than 3" in the Preserve subject to the terms and conditions of a permit issued by the superintendent.

**13.485(a)(2) Restrictions on cutting of timber less than 3" in diameter for subsistence purposes**

Cutting of timber is not authorized within the Park. Verbal or written permission from a park ranger is required to cut timber less than 3" in diameter in the Preserve, except as necessary to clear designated vehicle routes and airstrips.

## GLACIER BAY NATIONAL PARK AND PRESERVE SPECIAL REGULATIONS

### **13.1114 Collection of goat hair**

Goat hair may be collected for cultural purposes with written authorization from the superintendent.

### **13.1120 Bartlett Cove Developed Area (BCDA): closures and restrictions**

No closures or restrictions at this time.

### **13.1122(b)-(h) Bartlett Cove Public Use Dock**

Exceptions are made on a case by case basis. Contact park headquarters for more information.

### **13.1124(b) Bartlett Cove Campground: designated areas for cooking, consuming, and preparing food**

Food will be cooked, prepared and consumed in the intertidal zone adjacent to the campground.

### **13.1124(c) Bartlett Cove Campground: designated areas for food storage in the Bartlett Cove Campground**

Marked food storage caches are located in the Bartlett Cove Campground

### **13.1130(a) Commercial Fishing. List of existing fisheries and gear types for the park's outer waters:**

- King Crab, Pot
- Tanner Crab, Pot and Ring
- Dungeness Crab, Pot
- Weathervane Scallop, Dredge
- Shrimp, Pot
- Pacific Salmon, Troll
- Chum Salmon, Purse Seine
- Pacific Halibut, Longline
- Groundfish, Dinglebar and Longline

*The commercial fisheries listed above are those fisheries which have, at the time of the 1998 legislation regarding commercial fishing in the park (P.L. 105-277), been established legally in outside waters. All fisheries are subject to current state and Federal regulations and emergency closures, which should be referred to prior to engaging in any fishery in Glacier Bay National Park & Preserve.*

### **13.1130(d) Commercial Fishing. Maps and charts showing marine waters of Glacier Bay that are closed to commercial fishing**

See Appendix C.

### **13.1152(a) Private vessel permits and conditions**

In Glacier Bay from June 1 through August 31 an individual must have a permit from the NPS issued for a specific vessel for a specific period of time unless exempt under 13.1156.

#### **Obtaining Private Vessel Permits**

Private motor vessel permits are only required for Glacier Bay proper, and only for the months of June, July, August. The following procedures and conditions apply to the issuance and use of private motor vessel permits:

- All private vessel permits will be allocated in such a manner that will prevent exceeding the maximum daily presence of no more than 25 private vessels in Glacier Bay at one time.
- Permits may be obtained via telephone (907-697-2627), fax (907-697-2647), marine band radio (KWM20Bartlett Cove), by mail addressed to the Visitor Information Station at P.O. Box 140 Gustavus AK 99826 ,or in person at the Visitor Information Station at Bartlett Cove.
- Advance-notice permits: 14 of the 25 daily permits may be reserved up to 60 days in advance. Once reserved, Advance-notice permits must be confirmed with the park within 48 hours of the scheduled arrival. Permits not confirmed through the park's Visitor Information Station by 10:00 a.m. on the scheduled date of arrival, will be cancelled and made available for reissue.
- Short-notice permits: 10 of the 25 daily permits may be reserved up to two days in advance.
- Transit permit: One permit will be available as a transit permit, to be used only to directly exit Glacier Bay from Bartlett Cove and to return directly to Bartlett Cove by vessels that have originated in Bartlett Cove. A Transit permit may be reserved up to 24 hours in advance only for the time required for transit. Reservations for this permit must be received between the hours of 7:00 am and 9:00 pm. The Transit permit may be made available to more than one vessel per day; however, it may only be used by one vessel at a time, and cannot be reissued until the former holder of the permit has completed their transit in Bartlett Cove or outside Glacier Bay.
- Private vessel permits shall be issued in the order in which applications are received.
- A person may not hold more than 2 permits, excluding a transit permit, for a vessel at any time.
- A permit is considered cancelled when 1) the vessel leaves Glacier Bay Proper and is not intending to return within one day or 2) the vessel enters Bartlett Cove waters as defined in 36 CFR 13.1156(b) and is not intending to leave within one day.

#### **Length of Stay**

- If additional vessel use days are unavailable, a vessel may remain anchored for up to seven additional days without motorized operation at Blue Mouse Cove, Sandy Cove, or Bartlett Cove. If the vessel leaves an anchorage without obtaining a permit or permit extension it must proceed directly out of the Bay. A person may not hold a permit for more than fourteen (14) days in any twenty-one (21) day period.
- Better defines permit limitations and prevents misuse of permit system by requiring that permit holders use the permit for consecutive use days

### 13.1178 Closed waters, islands and other areas

From May 1 through August 31, it is prohibited to operate a vessel or otherwise approach within 100 yards of the following four islands:

- Island at the entrance to Scidmore Bay and Charpentier Inlet (longitude W 136 degrees, 31.9', latitude N 58 degrees, 45.4')
- Island southeast of Tlingit Point (longitude W 136 degrees, 10.6', latitude N 58 degrees, 45.0')
- Island northwest of Eider Island (longitude W 135 degrees, 57.2', latitude N 58 degrees, 31.3')
- Sealers Island (longitude W 136 degrees, 07.4', latitude N 58 degrees, 57.6')

### 13.1184 Rules for the safe and equitable use of Bartlett Cove waters and docks.

The following use restrictions are for the safe and equitable use of park facilities:

#### January 1 - December 31

- Dock space on the Public Use Dock is assigned for use by private vessels and administrative needs of the Park (NPS vessels, Day Tour boat for concessionaire etc.) and aircraft as depicted in Appendix A. Parking in a space otherwise reserved is prohibited.
- Residing on a vessel within Bartlett Cove for more than fourteen days during any time period is prohibited unless otherwise authorized by the superintendent.

#### Bartlett Cove Waters

- The discharge of "blackwater" (water contaminated with human waste) is prohibited in Bartlett Cove waters.  
*This requirement is to limit the discharge of human waste that might complicate the water quality monitoring by the park.*
- The placement of temporary moorings is authorized to the north or east of the Public Use Dock, provided they are at least one-quarter mile from the dock. These moorings must meet applicable marking requirements, may not be installed prior to April 1, and must be removed by November 1 in a given calendar year. Contact must be made with the Protection Ranger prior to placement of a mooring and Mooring Buoy Agreement signed.  
*These limitations are necessary to ensure that fixed moorings not preempt the most convenient anchorage locations or impede access to the dock, are properly tended, and are temporary rather than permanent fixtures.*
- Anchoring vessels within 300 ft. of the Public Use Dock is prohibited. The No Anchor Zone is depicted in Appendix A of this compendium. The placement of buoys, markers, or lines (including fishing gear) is authorized to the north or east of the Public Use Dock, provided they are at least one-quarter mile from the dock.  
*This limitation is necessary to ensure adequate room for safe maneuvering of vessels and aircraft accessing and departing from the Public Use Dock.*
- Anchoring in the inner lagoon area is limited to 7 consecutive days unless otherwise authorized by a park ranger.  
*The inner lagoon is known and used by local residents as a storm anchorage. These limitations are intended to accommodate short-term use of the lagoon, which is limited in size, but preclude long-term use that limits opportunity for use by other visitors or local residents.*



- No buoys or lines may be placed inside the inner lagoon unless otherwise authorized by a park ranger.

*This limitation is intended to ensure clear and safe passage for all vessels transiting the inner lagoon, and availability of the lagoon for temporary storm anchorage use.*

### **May 1 - September 15**

- Vessels may dock at the Public Use Dock for a maximum of three hours in any 24-hour period, unless otherwise authorized by a park ranger.  
*This provides flexibility to allow longer docking periods on a space available basis to complete boat repairs, etc.*
- Vessels less than 10 ft. in length, used exclusively as a dinghy for transportation between a boat and the dock, may dock in the designated dinghy area (see Appendix A).”  
*This allows overnight docking of small vessels (<10’) commonly used as tenders for larger vessels.*
- Trailers specifically designed for transport of kayaks and canoes are allowed on the dock when authorized by a park ranger. However, when backing, the trailers must be detached from the tow vehicle and backed by hand. All other trailers and commercial passenger-carrying vehicles (such as B&B vans, taxis and buses) are prohibited from driving onto the dock unless authorized by a park ranger.
- A park ranger may authorize temporary public use of the Administrative Dock on a space available basis. Use will be limited to 3 consecutive days during the peak use season, May 1 - September 30, and 7 consecutive days the remainder of the calendar year.  
*This accommodates visitor and local resident use of the administrative dock for repairs, etc., on a space available basis.*

### **Sept. 16 – April 30**

- Vessels may tie up to the Public Use Dock for up to ten consecutive days. Vessels must leave the dock for at least one 24 hr. period for each period of 10 consecutive days. All vessels tying up to the dock must register with a park ranger on the initial day of each docking period.  
*This relaxation of summer docking limits allows for more flexible use of the dock during the winter season when weather is inclement and vessel movement is more difficult, yet still prevents long term storage of vessels on the public dock.*

## **43 CFR, PART 36 TRANSPORTATION AND UTILITY SYSTEMS (Access Regulations)**

### **36.11(c) Temporary closures to the use of snowmachines for traditional activities**

No closures at present.  
See also 2.18.

### **36.11(d) Temporary closures to the use of motorboats**

The use of motorized boats is prohibited on the Alsek River at Alsek Lake above Gateway Knob between April 1 through October 31 in accordance with the approved Alsek River Visitor Use Management Plan (1989).

*This restriction is to ensure the wilderness experience of visitors rafting the Alsek River is minimally disrupted by powerboats. Congress directed that the Alsek River corridor be managed to preserve its outstanding wilderness characteristics.*

See also 3.3, 3.6, and Subpart N.

**36.11(e) Temporary closures to the use of non-motorized surface transportation**

Vessels- A permit is required for non-motorized surface transportation within the Alsek River corridor as shown on Appendix E above Gateway Knob between May 1 through September 30.

*This requirement is necessary to manage public use of the Alsek River corridor in accordance with the Alsek River Visitor Use Management Plan (1989). The Plan seeks to manage use for no more than one party initiating travel within the river corridor each day. This use level would be exceeded without the current permit and management system. Permits for the Alsek River can be obtained by contacting the NPS office in Yakutat, Alaska, phone (907) 784-3370.*

See also 2.16, 3.3, 3.6.

**36.11(f)(1) Temporary closures to landing fixed-wing aircraft**

No closures at present.

**36.11(f)(3)(ii) Established procedure for salvaging and removing downed aircraft**

A permit is required from the superintendent before downed aircraft may be salvaged and removed from the park; violation of the terms and conditions of the permit is prohibited.

*This requirement allows the superintendent to establish terms and conditions for salvage operations as necessary to protect resources, provide for public safety, and minimize impacts on visitors.*

**36.11(g) Off-road vehicles**

See 36 CFR 13.1109.

**This compendium is approved and rescinds all previous compendiums issued for Glacier Bay National Park and Preserve.**

---

Superintendent

Date

**List of Attachments**

Appendix A: Restrictions on the Use of Bartlett Cove Docks, 13.1122

Appendix B: Areas Open to ATVs, 13.1109

Appendix C: Maps and Charts of Glacier Bay Marine Waters Closed to Commercial Fishing

Appendix D: Temporary Camping Closures

Appendix E: Alsek Corridor

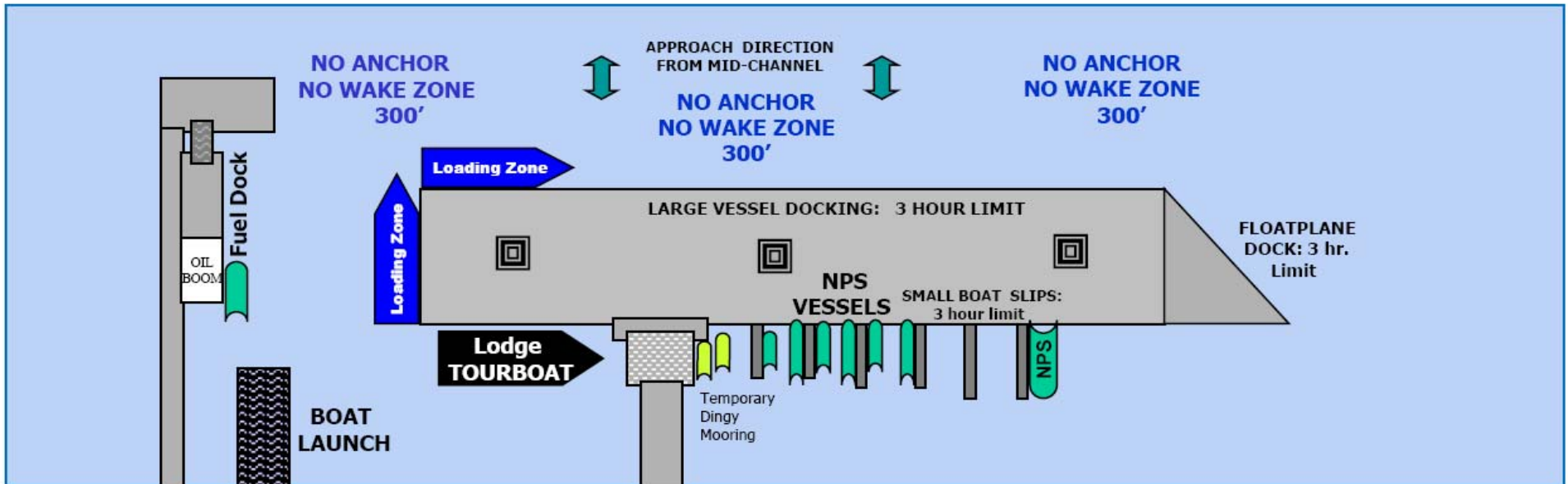
13.1122(b)-(h) Bartlett Cove Public Use Dock

13.25(a)(1) Temporary closures and restrictions to camping

## Appendix A: Restrictions on the Use of Bartlett Cove Docks, 13.1122

Rules for the safe and equitable use of Bartlett Cove waters and docks: Bartlett Cove Public Use Dock.

# GUIDE TO DOCKING: Bartlett Cove Public Use Dock

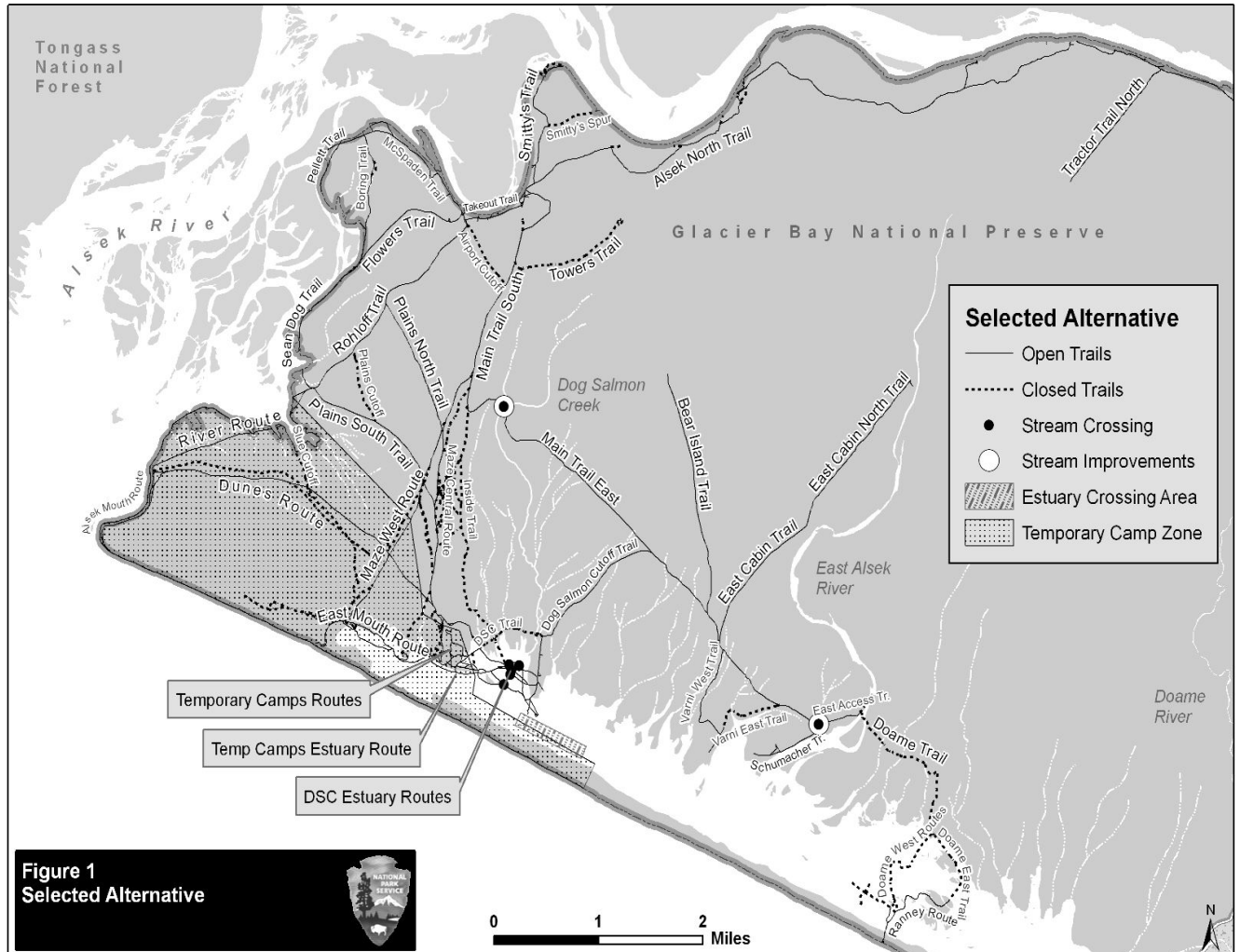


- \* Docking at the Public Use Dock is only on a space-available basis. Space cannot be reserved.
- \* Three hour limits are in effect from May 1st through September 15th for the equitable use of all dock users.
- \* The Loading/Unloading zone is from May 1 through September 30.
- \* Fresh, potable water is available on the dock. Shore power is not available without permission from a ranger.
- \* Call the Visitor Information Station for more information on use of the Bartlett Cove Dock.

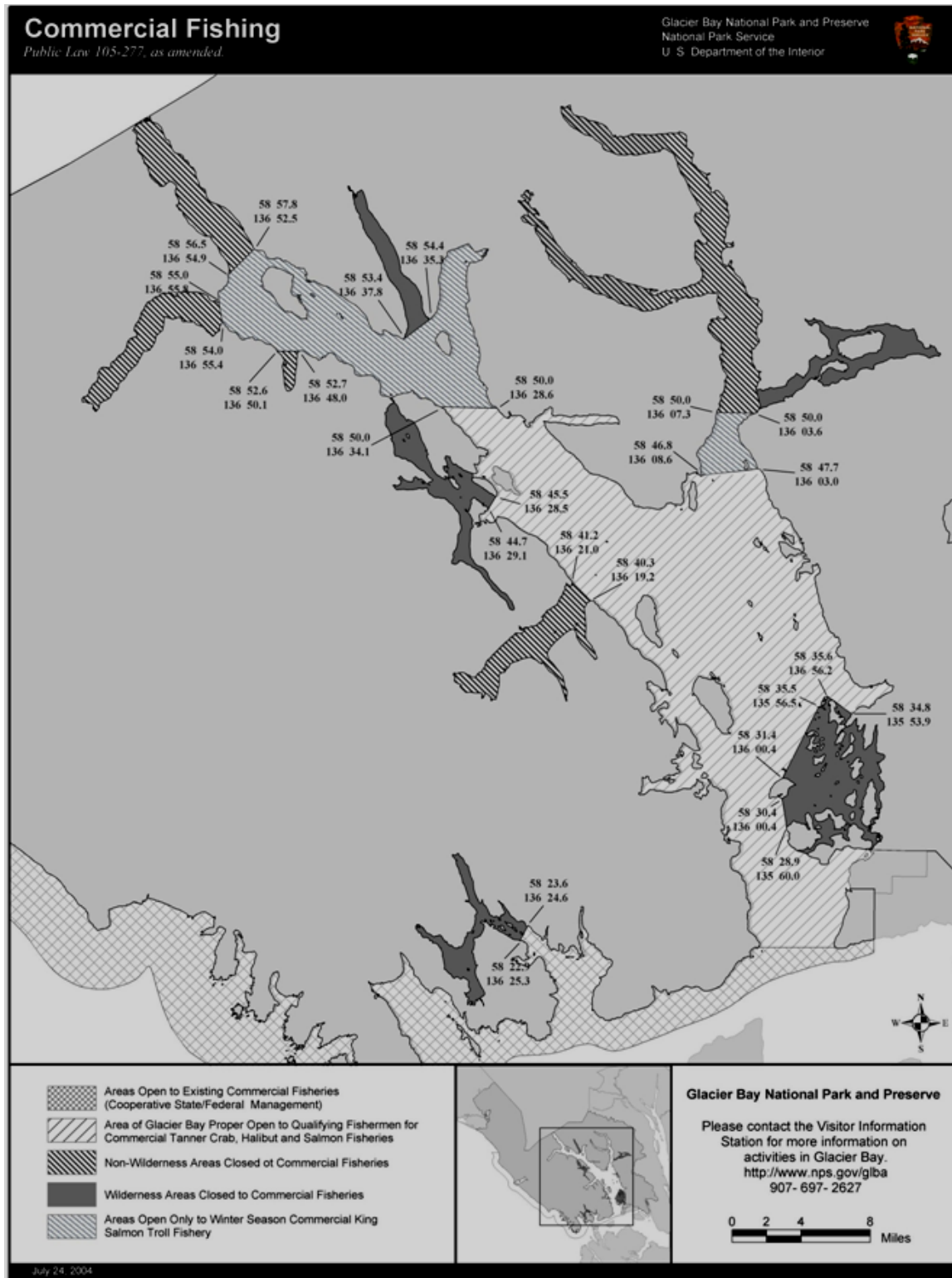
## Appendix B, Off-road vehicle use in Glacier Bay National Preserve, 36 CFR 13.1109

### 13.1109 Off-road vehicle use in Glacier Bay National Preserve

The use of off-road vehicles is authorized only on designated routes and areas in Glacier Bay National Preserve. The use of off-road vehicles in all other areas in Glacier Bay National Preserve is prohibited. A map of designated routes and areas is available at park headquarters.



# Appendix C: Maps and Charts of Glacier Bay Marine Waters Closed to Commercial Fishing, 13.1146

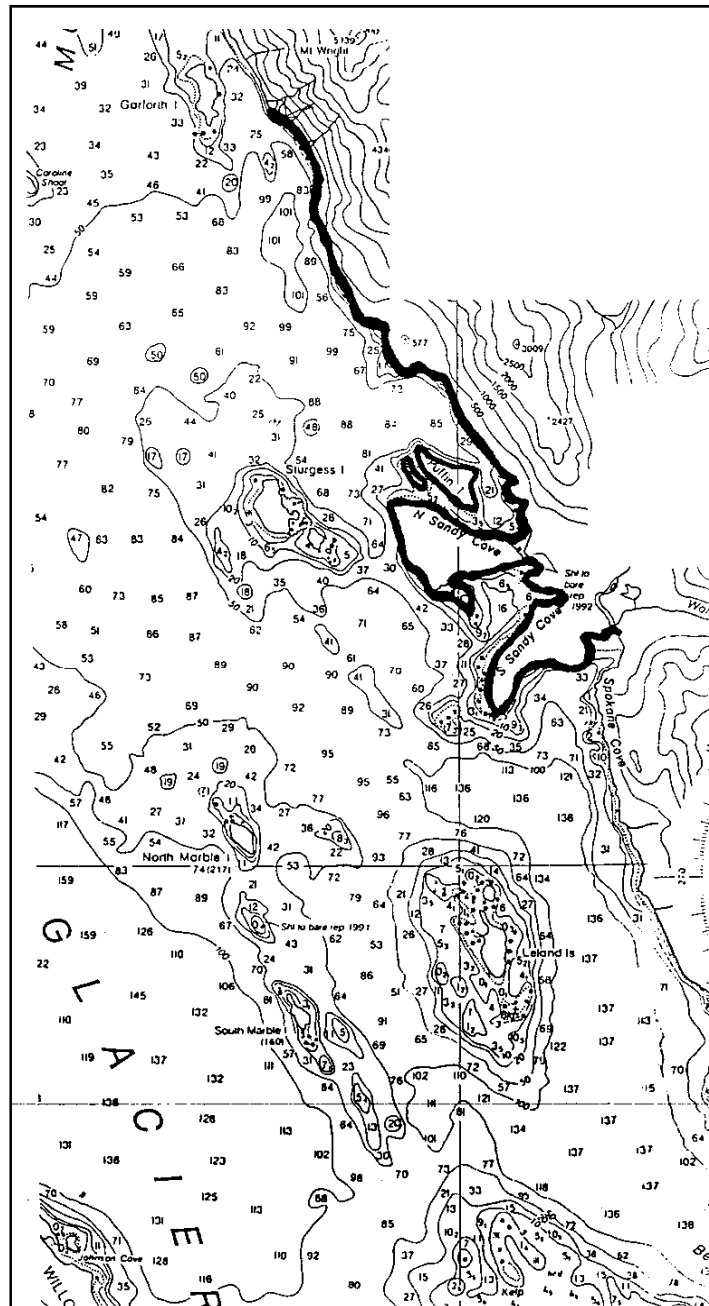


## Appendix D: Areas Closed to Overnight Camping, 13.25(a)(1)

- The landmass from Wolf Creek to a point directly east of the southern tip of Garforth Island including Puffin Island and the two unnamed islands in North Sandy Cove, and the one unnamed island in South Sandy Cove, from sea level to any elevation is closed to overnight camping due to a high concentration of bears, May 1 - August 15.

W58 47.173 N136 03.260

W58 42.253 N135 57.325

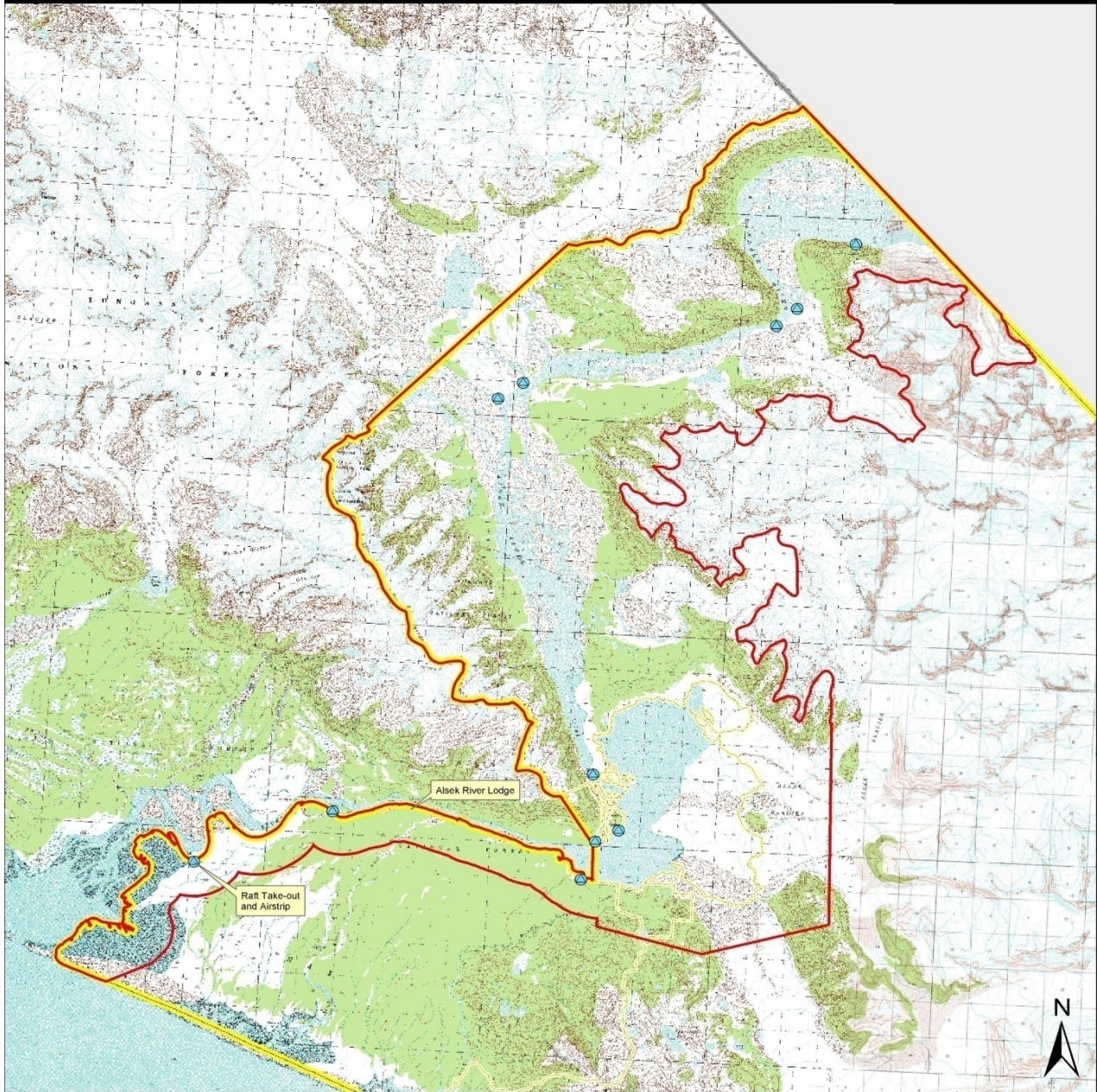








# Appendix E: Alsek Corridor

## Alsek River Management Plan Project Area

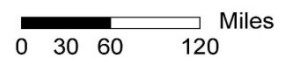
Glacier Bay National Park and Preserve  
National Park Service  
U. S. Department of the Interior



-  Project Area
-  Park Boundary
-  Internal Park Boundaries
-  Frequently Used Campsites



**Glacier Bay National Park and Preserve**



May 20, 2004



## Determination of Need for a Restriction, Condition, Public Use Limit, or Closure

### **Subject: Bartlett Cove Public Use Dock**

Pursuant to Title 36 of the Code of Federal Regulations 13.1122(b)-(h) the Superintendent of Denali National Park and Preserve has determined:

Vessels are permitted to utilize the reserved area at the west end of the Bartlett Cove Public Use Dock for the purpose of loading and unloading passengers or materials. Leaving a vessel unattended at the loading/unloading zone for any length of time is prohibited. (See Appendix A).

The reasons for this change are as follows:

1. Periodic overcrowding of the Public Use Dock deprives mariners of any available space to access the dock in order to load and unload passengers and materials.
2. Lack of dock space during the summer detrimentally affects mariner welfare and safety.
3. The Loading/Unloading zone will be in effect from May 1 to September 30 during the busy summer season.
4. Other dock site locations and dates were determined to be less advantageous to mariners in general and ineffective overall in addressing overcrowding issues during the summer months.

## Determination of Need for a Restriction, Condition, Public Use Limit, or Closure

### **Subject: Temporary closures and restrictions to camping**

Pursuant to Title 36 of the Code of Federal Regulations 13.25(a)(1) the Superintendent of Denali National Park and Preserve has determined:

- The landmass from Wolf Creek to a point directly east of the southern tip of Garforth Island including Puffin Island and the two unnamed islands in North Sandy Cove, and the one unnamed island in South Sandy Cove, from sea level to any elevation is closed to overnight camping due to a high concentration of bears, May 1 - August 15. (See Appendix D)
- *This restriction is intended to minimize conflicts between backcountry campers and bears in an area habitually used and important to bear. The restriction on overnight camping does not preclude day use of this area for hiking and other activities.*