

# Registered Nurse

## INTRODUCTION

Each ladder illustrates a family of related occupations. Some ladders allow for advancement through experience and on-the-job training, while others require formal licensing, education, or certification. Wages reflect approximate hourly wage rates in Northwest Indiana.

**\*Please click on occupation desired below\***



### 5 Year Experience

**Education/Skills:** Associate in Arts Degree, Bachelor's Degree, elevated math, language and interpersonal skills, licensing exam

Registered Nurse Min/Avg \$19.00/\$24.18
--



### 3 Years Experience

**Education/Skills:** Vocational training, licensing exam, interpersonal and language skills

Emergency Medical Technician Min/Avg \$9.55/\$12.15
---

Surgical Technician Min/Avg \$12.00/\$14.50
---

Licensed Practical Nurse Min/Avg \$12.24/\$14.12
--



### Entry Level

**Education/Skills:** 3-6 month training, interpersonal, reading and language skills

Medical Assistant Min/Avg \$9.07/\$10.18
--

Home Health Aides Min/Avg \$7.32/\$8.90
---

Nurse Aides Min/Avg \$7.47/\$8.62
---

## Basic Skills: Registered Nurse

### Job specific skills:

- Talking to others to convey information effectively
- Actively looking for ways to help people
- Understanding written sentences and paragraphs in work related documents
- Being aware of others' reactions and understanding why they react as they do
- Considering the relative costs and benefits of potential actions to choose the most appropriate one
- Using logic and reasoning to identify the strengths and weaknesses of alternative solutions, conclusions or approaches to problems
- Adjusting actions in relation to others' actions
- Giving full attention to what other people are saying, taking time to understand the points being made, asking questions as appropriate times
- Communicating effectively in writing as appropriate for the needs of the audience
- Using scientific rules and methods to solve problems

### Verbal communication skills:

- Public contact skills
- Listening skills
- Oral Comprehension

### Written communication skills:

- Ability to read labels and instructions
- Write effectively and legibly
- Read and follow instructions
- Reading comprehension
- Inductive reasoning

### Problem solving skills:

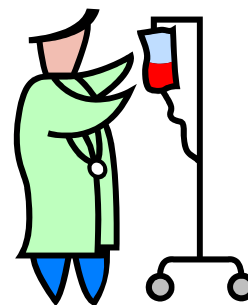
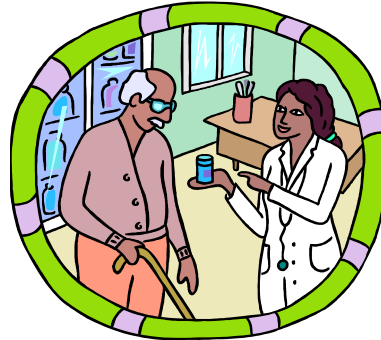
- Judgment and decision making
- Critical thinking
- Active listening

### Adapt to social environment:

- Work independently
- Deal effectively with difficult individuals
- Understanding of a variety of cultures

### Adapt to work/job environment:

- Ability to handle crisis situations
- Work under pressure
- Bilingual helpful



## Job Description



### Job Description:

- Assess patient health problems and needs, develop and implement nursing care plans, and maintain medical records.
- Administer nursing care to ill, injured, convalescent, or disabled patients.
- May advise patients on health maintenance and disease prevention or provide case management.
- Licensing or registration required.
- Includes advance practice nurses such as: nurse practitioners, clinical nurse specialists, certified nurse midwives, and certified registered nurse anesthetists.
- Advanced practice nursing is practiced by RNs who have specialized formal, post-basic education and who function in highly autonomous and specialized roles.

### Where to get training locally:

Can obtain a Technical Certification or an Associates Degree.

## Education



### Training located at:

Ivy Tech State College  
1440 E. 35<sup>th</sup> St.  
Gary, IN 46409  
[www.ivy.tec.edu](http://www.ivy.tec.edu)

Purdue Calumet  
2200 – 169<sup>th</sup> St.  
Hammond, IN 46323  
[www.calumet.purdue.edu](http://www.calumet.purdue.edu)

Ivy Tech State College  
220 Dean Johnson Blvd.  
South Bend, IN 46601-3415  
[www.ivy.tec.edu](http://www.ivy.tec.edu)

Purdue North Central  
1401 S. Hwy 421  
Westville, IN 46391  
[www.purdue.edu](http://www.purdue.edu)

Ivy Tech State College  
3101 S. Creasy Lane  
Lafayette, IN 47903-6229  
[www.ivy.tec.edu](http://www.ivy.tec.edu)

Purdue University West Lafayette  
Lafayette, IN 47907  
[www.purdue.edu](http://www.purdue.edu)

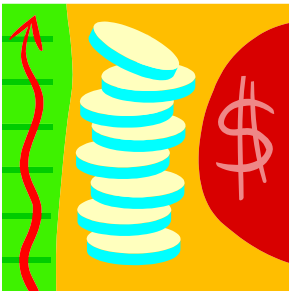
Indiana University  
3400 Broadway  
Gary, IN 46408  
[www.iun.edu](http://www.iun.edu)

Indiana University South Bend  
1700 Mishawaka  
South Bend, IN 46634  
[www.iusb.edu](http://www.iusb.edu)

Ancilla College  
PO Box 1  
Donaldson, IN 46513  
[www.ancilla.edu](http://www.ancilla.edu)

Lake Michigan College  
2755 East Napier Ave  
Benton Harbor, MI 49022  
[www.lakemichigancollege.edu](http://www.lakemichigancollege.edu)

## Wages, Hours and Fringe Benefits



**Entry Level Wage:** \$19.00

**Average Wage:** \$24.18

**Hours:** The workweek for a Registered Nurse is usually 40 hour per week. Some employers hire applicants part-time.

**Benefits:** Paid vacations, holidays, health and other types of insurance and retirement plans.

## Finding the Job



## Advancement



## Employment Outlook



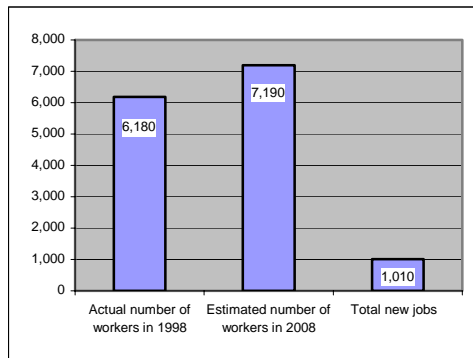
### Where to start your job search:

- Physicians' offices
- Medical clinics
- College placement centers
- Hospitals and health care facilities
- Public and private employment agencies

### Advance:

Promotions for Registered Nurses are usually limited to raises and more responsible duties. Some may be promoted in larger clinics or hospitals.

### Projected Job Growth



Actual number of workers in 1998	6,180
Estimated number of workers in 2008	7,190
Total new jobs	1,010
<b>Projected Growth: 16.3%</b>	

*Labor Market Information – Department of Workforce Development*

Employment of RNs by the year 2008 is expected to be above the average growth for most occupations. Recent surveys show that there is a strong demand for RNs, who are placed as soon as they complete required certification.