

Indian and Native American (INA) Program

See our program website

<http://www.doleta.gov/dinap/>

Performance Goals

GPRA Performance Measure	PY 2008 Target
Entered Employment	70%
Retained Employment	75%
Average Earnings	\$9,964

Analysis

- During the second quarter of PY 2008, the INA program met its goal for the Employment Retention measure.
- Entered Employment and Average Earnings measures were slightly below the targets set for PY 2008.

Note: Performance outcomes for the quarter ending on December 31, 2008, were compiled using Unemployment Insurance (UI) Wage records.

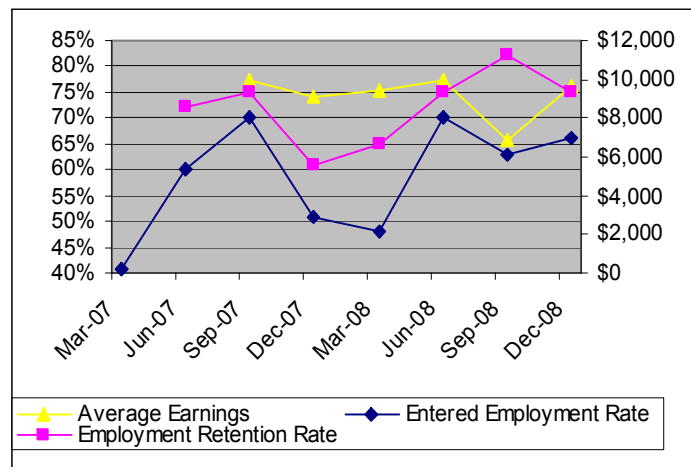
Charting Program Performance

Performance Measure	Quarter Ending ¹ 12/31/07	Quarter Ending ¹ 12/31/08 ²
Entered Employment	51%	66%
Retained Employment	56%	75%
Average Earnings	\$6,788	\$9,632

¹ All performance measure data is cumulative four quarter data.

² The data provided is actually for the four quarters ending September 30, 2008. This lag in data provided occurs because of the lag in UI wage record availability.

Performance Progress in the Past Eight Quarters



Program Description

The Employment & Training Administration's Indian and Native American (INA) Program provides employment and training grants to Indian tribes, non-profit tribal organizations, Alaska Native entities and Native Hawaiian organizations. The purpose of providing comprehensive employment and training services is to increase the ability of program participants to compete in the new global economy and also promote the economic and social development of Indian, Alaska Native, and Native Hawaiian communities.

	<p>Other Program Highlights and Innovations</p> <p>The INA Program continues to collect and refine the Common Reporting Information System (CRIS) data process for reporting and analysis. It is also continuing to incorporate WIRED principles in its two year strategic planning</p> <p>Furthermore, the INA Program continues to work on improving its reporting methodology and providing technical assistance and training to the Indian and Native American communities on the common measures.</p>
--	---