

WIA Adult Program

Check us on our website at

http://www.doleta.gov/programs/general_info.cfm

Performance Goals

GPR Performance Measure	PY 2008 Target
Entered Employment	70%
Retained Employment	84%
Average Earnings	\$13,575

Analysis

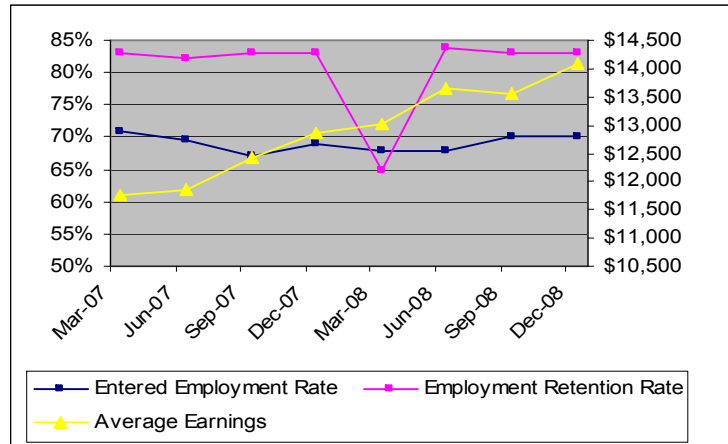
- The Entered Employment Rate of 70 percent in the second quarter of PY 2008 is on target with the GPR goal.
- The Employment Retention Rate exhibited a drop of four percentage points compared to the data from one year ago. The result currently stands at 83 percent.
- The Average Earning result for the WIA Adult program during the second quarter of PY 2008 is \$14,104, which is slightly lower than last year's result, but above the GPR goal for PY 2008.

Charting Program Performance

Performance Measure	Quarter Ending ¹ 12/31/2007	Quarter Ending ¹ 12/31/2008
Entered Employment	69%	70%
Retained Employment	87%	83%
Average Earnings	\$14,520	\$14,104

¹ All performance measure data is four quarter cumulative data.

Performance Progress in the Past Eight Quarters



Program Description

Adult Services encompass workforce investment programs and initiatives that help millions of adult workers receive workforce preparation assistance. These programs also help employers find the workers they need. They promote and facilitate an integrated public workforce system, offering a full array of workforce education, training, and information services. Adult programs serve the broadest range of individuals, including Unemployment Insurance claimants, veterans, people with disabilities, dislocated workers, migrant and seasonal farm workers, Indian and Native Americans, workers age 55 or older, and incumbent workers

Other Program Highlights and Innovations

The Department has scheduled Regional Reemployment Conferences throughout the country. Each venue will provide comprehensive technical assistance and training to support economic recovery through the exchange of innovative ideas and practices; the display of cutting-edge tools and technology; and the sharing and analysis of the latest information from the new Administration. Workshops will foster dialog between participants about the need for transformation and innovation of the reemployment function,

	<p>communicate urgency, generate new ideas, and inspire participants to action when they return home. Through a collaborative Federal, state, and local approach, the end goal is to develop a comprehensive workforce system response to globalization and economic challenges to reemploy the unemployed within the context of the current economic crisis.</p>
--	---