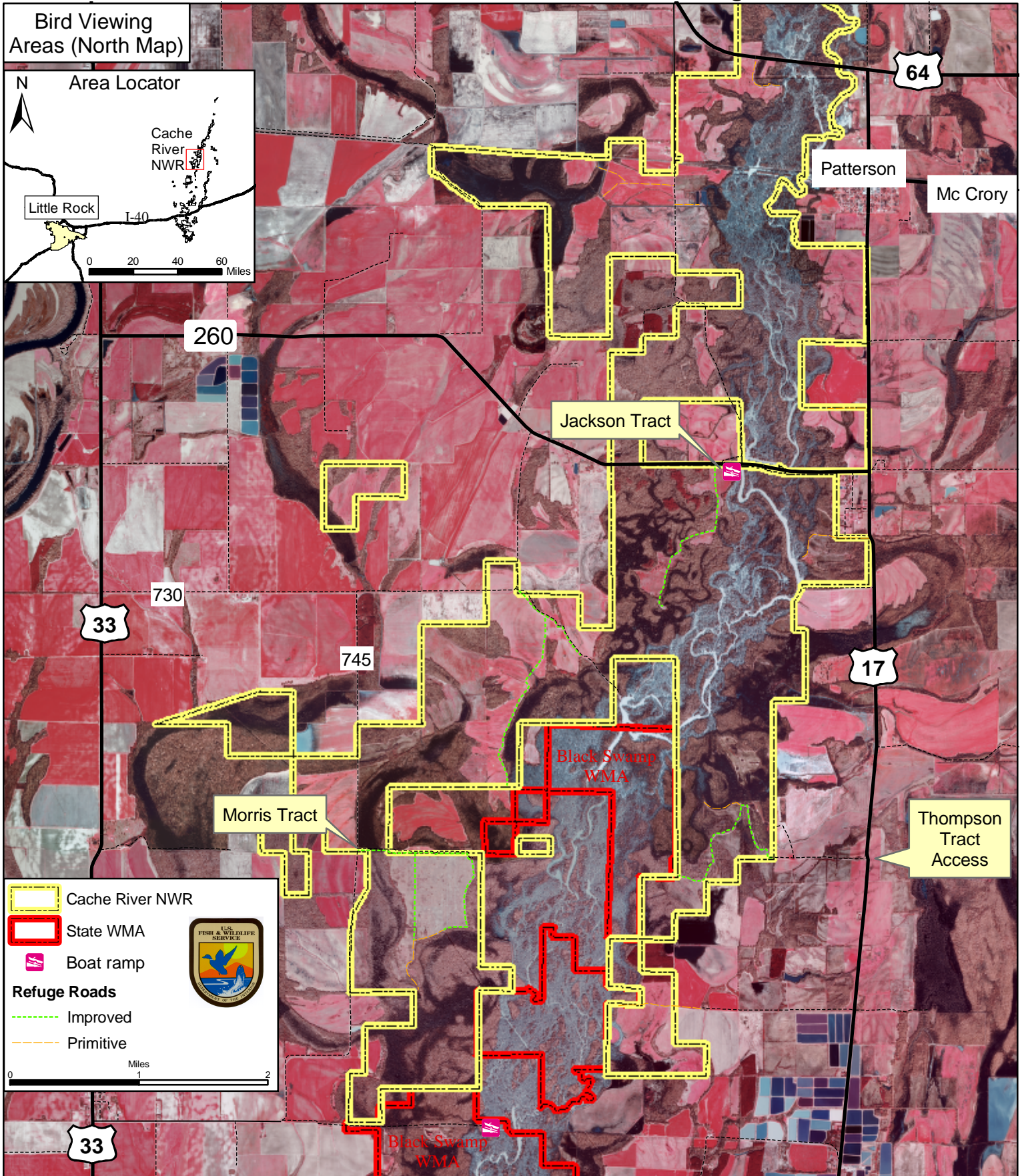


Cache River National Wildlife Refuge

(870) 347-2074



Suggested Bird Viewing Areas: There is good viewing by walking on improved and primitive Refuge roads, or by boating. Road access is subject to flooding. A closed gate indicates closure to vehicles, but is open to foot traffic, unless signed otherwise.

Jackson Tract - From Highway 64 go 3 miles South on Highway 17, turn West on Highway 260, enter Refuge 1/4 mile past the Cache River bridge.

Thompson Tract - From Highway 64 go 6 miles South on Highway 17, turn west at Refuge Access Sign.

Morris Tract - From Highway 33 go East on Road 730 for 2 miles, turn South on Road 745, go 2 miles, access Refuge to the East on Road 740.