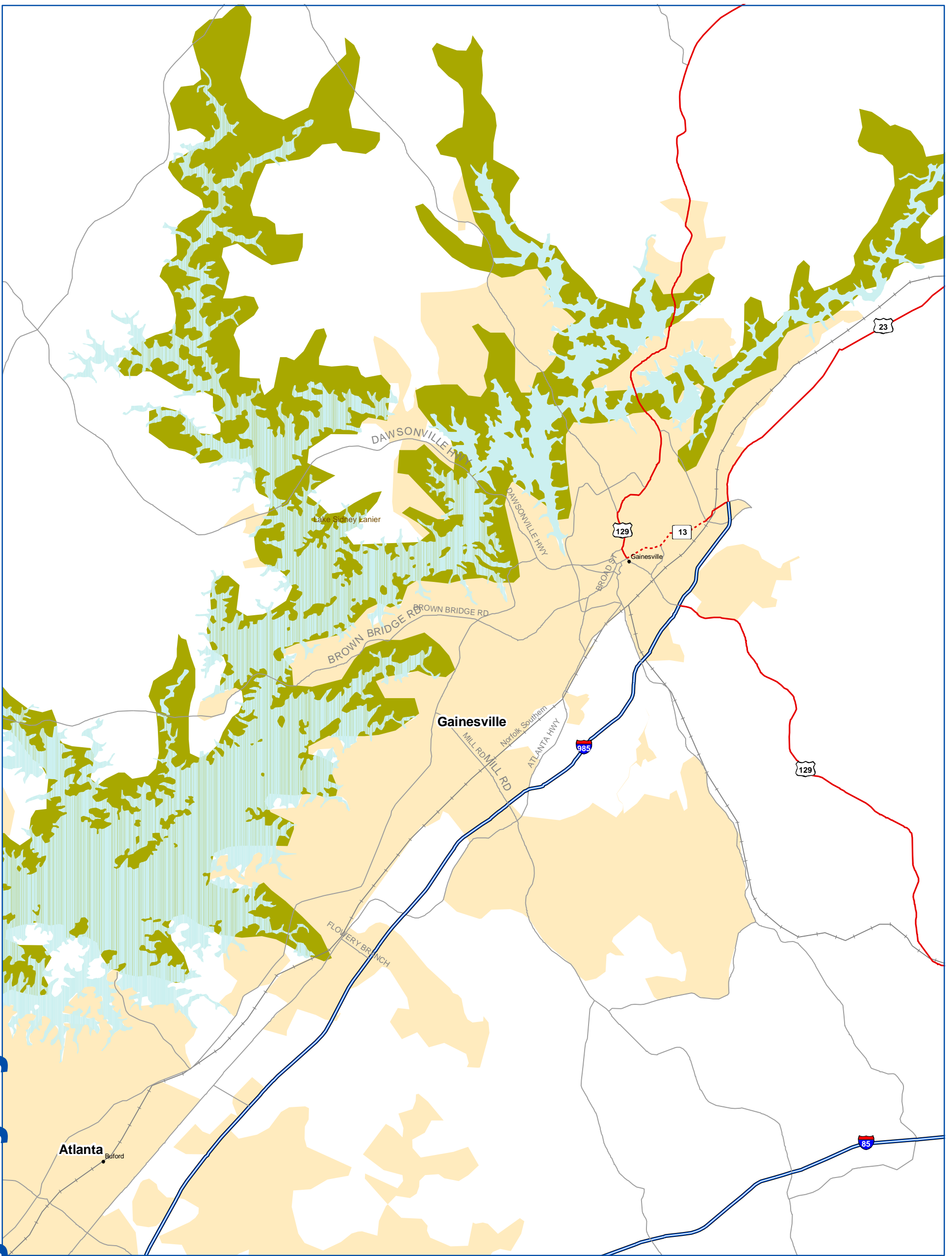


National Highway System: Gainesville GA



U.S. Department of Transportation
Federal Highway Administration

- | | | | |
|-------------------------------|------------------------|-------------------------|---------------------------------|
| Eisenhower Interstate System | Census Urbanized Areas | Airport | Multipurpose Passenger Facility |
| Other NHS Routes | Indian Reservation | Intercity Bus Terminal | Port Terminal |
| Non-Interstate STRAHNET Route | Department of Defense | Ferry Terminal | Truck/Rail Facility |
| Major STRAHNET Connector | National Forest | Truck/Pipeline Terminal | AMTRAK Station |
| Intermodal Connector | National Park Service | | Public Transit Station |
| Unbuilt NHS Routes | Water | | |
| Other Roads (not on NHS) | | | |
| Railroad | | | |



0 2 4 Miles

0 2 4 Kilometers