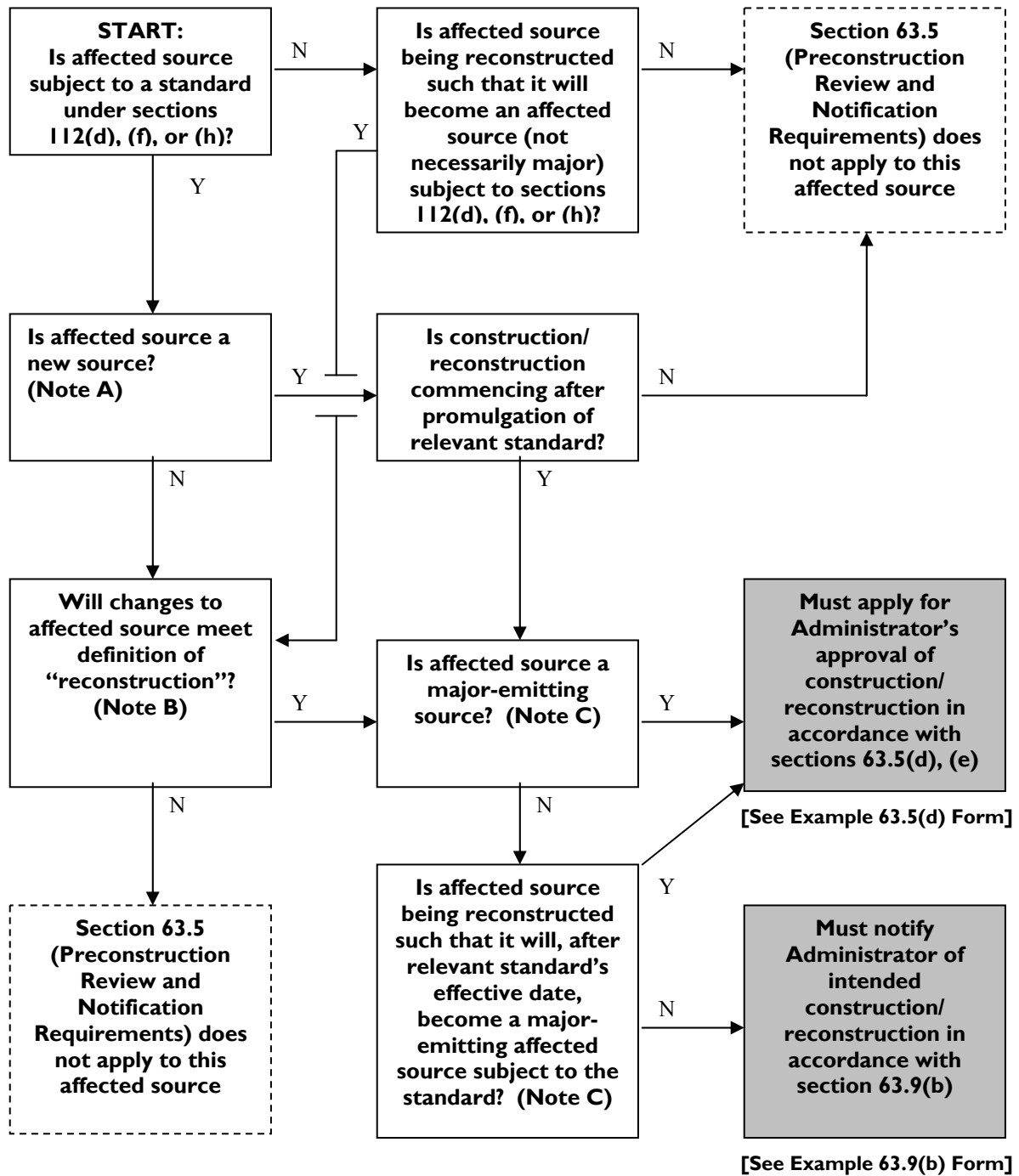


**Preconstruction Review Flow Diagram
(40 CFR 63.5 and 63.9)**



Notes:

- A. New source** means an affected source for which construction or reconstruction commences after the Administrator first proposes a relevant emission standard under Part 63 [Full definition at §63.2]. After the effective date of any relevant standard, equipment added (or a process change) to an affected source that is within the scope of the definition of affected source under the relevant standard shall be considered part of the affected source and subject to all provisions established for that affected source. [Full definition at §63.5(b)(6)]
- B. Reconstruction** means replacement of components of an affected source such that (1) fixed capital cost exceeds 50% of that which would be required to construct a comparable new source, and (2) it is technologically and economically feasible for the reconstructed source to meet the relevant standard. [Full definition at §63.2].
- C. Affected source** (defined at §63.2) means the collection of equipment/activities subject to the relevant standard. If it is major-emitting, the affected source has the potential to emit of a major source (defined at §63.2), typically 10 tons per year (tpy) of any HAP or 25 tpy of any combination of HAP.