



U.S. Department  
of Transportation  
**Federal Aviation  
Administration**

# **ADMINISTRATOR'S FACT BOOK**

**October 2001**

(Updated quarterly)

Produced by:  
Assistant Administrator for Financial Services  
Office of Cost and Performance Management  
Standards and Information Division

Web site: <http://www.atctraining.faa.gov/factbook>



## **FAA VISION**

*To provide the safest, most efficient and responsive aerospace system in the world, and to be the best Federal employer, continuously improving service to customers and employees.*

### **FAA Mission**

*FAA provides a safe, secure, and efficient global aerospace system that contributes to national security and the promotion of US aerospace safety.*

*As the leading authority in the international aerospace community, FAA is responsive to the dynamic nature of customer needs, economic conditions, and environmental concerns.*

# ***FAA VALUES***

## ***We Believe in***

- ☆ *Trust*
- ☆ *Integrity*
- ☆ *Honesty*
- ☆ *Involvement*
- ☆ *Teamwork*
- ☆ *Diversity*
- ☆ *Respect*

## ***We Are Committed To***

- ☆ *Responsiveness*
- ☆ *Quality*
- ☆ *Timeliness*
- ☆ *Fiscal Responsibility*
- ☆ *Accountability*
- ☆ *Communication*

## ***We Will Achieve These Values By***

- ☆ *Giving people what they need, then letting them do their jobs.*
- ☆ *Making timely decisions at the lowest level and respecting them.*
- ☆ *Committing our best to our customers.*
- ☆ *Valuing our people.*
- ☆ *Being open to new ideas.*
- ☆ *Speaking out for what we believe, even when it is unpopular.*
- ☆ *Recognizing each person's contributions and realizing each person's full potential.*
- ☆ *Collaborating across organizations.*
- ☆ *Taking pride in what we do.*

# Table of Contents

<b>FAA Vision and Mission .....</b>	<b>Inside Front Cover</b>
<b>FAA Values .....</b>	<b>Inside Back Cover</b>

## **Safety**

Aviation Accidents by Type of Operations .....	3*
Aviation Accident Rates by Type of Operation .....	4*
Airspace Incidents by Incident Type .....	5*
Airspace Incident Rates by Incident Type .....	6*
NTSB U.S. Transportation Fatalities .....	7*

## **FAA Air Traffic**

FAA Air Traffic Activity .....	8*
Air Route Traffic Control Center Activity .....	9*
50 Busiest FAA Air Traffic Control Towers .....	10*
50 Busiest Approach Control Facilities .....	12*
Automated Flight Service Station Activity .....	14*

## **Airports**

Number of U.S. Airports .....	16
National Airspace Systems Delays .....	17*

## **Aircraft**

U.S. Air Carrier Activity .....	18
U.S. General Aviation Activity .....	19
Aircraft Certification Service .....	20

## **Airmen**

Active Pilots and Nonpilots .....	21
-----------------------------------	----

## **Industry Trends**

Scheduled U.S. Air Carrier Traffic & Fin. Trends .....	22*
U.S. Commercial Space Trans. Financial Trends .....	23
Aviation Forecasts .....	24

<i>FAA Regional Boundaries Map</i> .....	25
--	----

FAA Organizational Chart .....	Center Fold*
--------------------------------	--------------

# Table of Contents (cont.)

## Commercial Space Transportation

Associate Administrator for Commercial Space Transportation (AST).....	28
AST Licensing and Industry Activity.....	29
U.S. Commercial Space Launch Schedule.....	30

## FAA Resources

FAA Employment .....	31*
FAA Percent Minority and Women Employment .....	32*
FAA Major Work Force Employment .....	33*
Labor Relations .....	34
FAA Finances.....	35
FAA Facilities and Aircraft.....	36

## Organization

FAA Officials–Washington Headquarters .....	37*
FAA Officials–Major Field Organizations .....	40*
FAA Officials--International Offices.....	42*
FAA Goals and Objectives.....	43

---

For further information call APF-100 (202-267-9946)

---

\*Updated this issue

Distribution: A-WXYZE-3; A-FOF-O(STD)

## Aviation Accidents by Type of Operation

Type of Operation	Year	Jan	Feb	Mar	Apr	May	Jun	Jul	Aug	Sep	Oct	Nov	Dec	Year Total
Large Air Carrier	2000	2	7	7	6	4	2	3	5	6	4	6	5	57
	2001	1	4	3	4	3	2	2	6	3				28
Commuter	2000	0	3	3	0	1	1	0	1	2	1	0	0	12
	2001	1	0	0	1	1	0	1	1	0				5
Air Taxi	2000	5	5	6	6	7	4	9	9	11	6	7	5	80
	2001	7	6	6	6	7	6	7	10	5				60
General Aviation	2000	90	106	129	159	172	190	247	219	180	150	101	96	1,839
	2001	103	106	122	146	154	190	246	199	111				1,377
Rotorcraft*	2000	14	12	20	21	25	20	22	15	18	16	7	17	207
	2001	11	16	19	9	16	17	24	18	17				147

\* Part 135 and US registered general aviation rotocraft accidents.

Sep 2001 does not include the 4 aircraft destroyed in the terrorist attacks of Sep. 11th

Note: Preliminary data and subject to change.

As of: 10/17/2001

Source: AAI-200  
(202) 267-3279

## Aviation Accident Rates by Type of Operation

Type of Operation	1997		1998		1999		2000		% Chg 99-98	
	Number	Rate	Number	Rate	Number	Rate	Number	Rate	Number	Rate
Large Air Carriers.....	48	.31	50	.29	52	.29	54	.30	4%	3%
Commuter.....	16	1.6	8	2.3	13	4.8	12	2.18	-8%	-55%
Air Taxi.....	83	3.64	78	3.03	77	2.71	80	3.29	4%	21%
General Aviation.....	1,855	7.28	1,908	7.12	1,908	7.05	1,835	5.96	-4%	-15%

Accident Rates are per 100,000 Flight Hours

Rotocraft rates discontinued, currently under review

Note: Preliminary data and subject to change.

As of: 3/16/01

Source: AAI-200

(202) 267-3279

## Airspace Incidents by Incident Type

Incident Type	Year	Jan	Feb	Mar	Apr	May	Jun	Jul	Aug	Sep	Oct	Nov	Dec	Year Total
Near Midair Collisions	2000	14	16	26	17	24	20	26	24	20	23	12	17	239
	2001	11	17	18	14	31	30	16	20	17				174
Pilot Deviations	2000	125	153	181	177	200	174	169	185	144	153	134	109	1,904
	2001	117	111	151	143	185	154	153	174	163				1,351
Operational Errors	2000	65	85	101	94	114	115	103	88	100	97	99	77	1,138
	2001	69	82	111	101	112	109	123	132	88				927
Vehicle Pedestrian Deviations	2000	43	42	37	52	46	62	48	43	58	43	42	32	548
	2001	37	38	30	48	36	39	53	41	40				362
Surface Incidents	2000	89	103	114	120	137	149	127	127	121	118	99	87	1,391
	2001	95	101	104	111	124	126	111	116	91				979
Runway Incursions*	2000	24	24	36	33	39	44	41	47	33	41	33	32	427
	2001	25	33	39	33	36	41	36	30	23				296

Note: Preliminary data and subject to change.

N/A: Not available at time of update.

As of: 10/5/01

\*As of: 9/20/01

Source: ATX-400

(202) 267-9630

\*ATS-20

(202) 493-4307



## Airspace Incident Rates by Incident Type

Incident Type									Percent Change	
	1997		1998		1999		2000		1998 - 1999 (4)	
	Number	Rate	Number	Rate	Number	Rate	Number	Rate	Number	Rate
Operational Errors (1).....	790	.51	894	.56	992	.60	1,138	.69	15%	15%
Pilot Deviations (2).....	1,494	.97	1,594	1.00	1,629	.99	1,904	1.16	17%	17%
Surface Incidents (3).....	813	1.26	832	1.26	1,048	1.53	1,391	2.05	33%	34%

(1) Per 100,000 Facility Activities

(2) Per 100,000 Flight Hours

(3) Per 1,000,000 Airport Operations

(4) Calculations use fifteen decimal places for rates (rounded two places for display).

Note: Preliminary data subject to change.

As of: 10/5/01

Source: ATX-400

(202) 267-9630

# National Transportation Safety Board

## 1999-2000 U.S. Transportation Fatalities

	1999	2000 <sup>1</sup>
<b>Highway</b> <sup>1</sup>		
Passenger cars.....	20,862	20,455
Light Trucks and Vans.....	11,265	11,439
Pedestrians.....	4,939	4,727
Motorcycles.....	2,483	2,680
Pedalcycles.....	754	738
Medium and heavy trucks.....	759	746
Buses.....	59	31
All Other.....	596	984
<b>Total.....</b>	<b>41,717</b>	<b>41,800</b>
<b>Grade Crossings</b> <sup>2</sup>	<b>(402)</b>	<b>(425)</b>
<b>Rail</b>		
Intercity <sup>3</sup>		
Trespassers and nontrespassers..... <sup>4</sup>	530	544
Employees and contractors.....	43	28
Passengers on trains.....	14	4
Transit <sup>5</sup>		
Light, heavy, and commuter rail.....	196	194
<b>Total.....</b>	<b>783</b>	<b>770</b>
<b>Marine</b>		
Recreational Boating.....	734	701
Cargo Transport.....	47	36
Commercial fishing..... <sup>6</sup>	57	41
Commercial Passengers.....	36	23
<b>Total.....</b>	<b>874</b>	<b>801</b>
<b>Aviation</b>		
General Aviation.....	630	592
Airlines.....	12	92
Air Taxi.....	38	71
Commuter.....	12	5
Foreign/Unregistered..... <sup>7</sup>	1	17
<b>Total.....</b>	<b>693</b>	<b>777</b>
<b>Pipeline</b>		
Gas.....	22	37
Liquids.....	4	1
<b>Total.....</b>	<b>26</b>	<b>38</b>
<b>GRAND TOTAL.....</b>	<b>44,093</b>	<b>44,186</b>

1 2000 figures are preliminary estimates. Aviation data come from the NTSB; all other data from DOT.

2 Grade crossing fatalities are not counted as a separate category for determining the grand totals because they are included in the highway and rail categories, as appropriate.

3 Data reported to Federal Rail Administration (FRA).

4 Does not include motor vehicle occupants killed at grade crossings.

5 Data reported to the FTA. Fatalities for commuter rail operations may also be reported to the FRA and may be included in the intercity railroad fatalities.

6 Refers to only operational fatalities.

7 Includes non-U.S. registered aircraft involved in accidents in the U.S.

# Air Traffic

## FAA Air Traffic Activity (In Thousands)

Aircraft Handled by	Jan-Aug 2001*	Jan-Aug 2,000	Jan-Dec 2000
<b>FAA ARTCC's</b>			
Air Carrier.....	16,931	16,733	25,080
Air Taxi.....	5,603	5,429	8,164
General Aviation.....	5,420	5,906	8,634
Military.....	2,781	2,871	4,178
<b>TOTAL....</b>	<b>30,735</b>	<b>30,939</b>	<b>46,056</b>
<b>Airport Operations Logged by FAA Towers</b>			
Air Carrier.....	9,855	9,942	14,892
Air Taxi.....	6,292	6,179	9,230
General Aviation.....	17,254	17,938	25,982
Military.....	1,429	1,373	2,012
<b>TOTAL....</b>	<b>34,830</b>	<b>35,432</b>	<b>52,116</b>
<b>Instrument Operations Logged by FAA Towers</b>			
Air Carrier.....	10,651	10,930	16,288
Air Taxi.....	7,593	7,510	11,239
General Aviation.....	13,292	13,983	20,391
Military.....	2,375	2,357	3,423
<b>TOTAL....</b>	<b>33,911</b>	<b>34,780</b>	<b>51,341</b>
<b>Flight Services Logged by:</b>			
Flight Service Stations.....	184	581	826
Automated Flight Service Stations.....	15,743	21,995	30,856
<b>TOTAL....</b>	<b>15,927</b>	<b>22,576</b>	<b>31,682</b>

\*Preliminary  
As of: 8/31/01

Source: APO-130  
(202) 267-3350

# Air Route Traffic Control Center Activity

CY 99 Rank	Center	Aircraft Handled (000's)		
		Jan-Aug 2001*	Jan-Aug 2000	Jan-Dec 2000*
1	Cleveland, OH.....	2,122	2,140	3,206
2	Atlanta, GA.....	1,994	1,980	2,956
3	New York, NY.....	1,960	1,941	2,921
4	Chicago, IL.....	1,936	1,949	2,920
5	Washington, DC.....	1,884	1,845	2,772
6	Indianapolis, IN.....	1,752	1,797	2,685
7	Jacksonville, FL.....	1,502	1,554	2,295
8	Memphis, TN.....	1,489	1,492	2,232
9	Fort Worth, TX.....	1,474	1,497	2,228
10	Kansas City, KS.....	1,466	1,474	2,200
11	Miami, FL.....	1,537	1,499	2,193
12	Los Angeles, CA.....	1,452	1,447	2,165
13	Minneapolis, MN.....	1,427	1,437	2,143
14	Houston, TX.....	1,398	1,407	2,095
15	Albuquerque, NM.....	1,222	1,453	2,052
16	Boston, MA.....	1,300	1,270	1,906
17	Denver, CO.....	1,171	1,161	1,730
18	Oakland, CA.....	1,133	1,124	1,684
19	Salt Lake City, UT.....	1,054	1,040	1,545
20	Seattle, WA.....	958	977	1,451
21	Anchorage, AK.....	414	380	567
22	Guam ** .....	91	74	112

\*Preliminary

\*\*Center Radar Approach Control (CERAP)

As of: 8/31/01

Source: APO-130  
(202) 267-3350

# 50 Busiest FAA Airport Traffic Control Towers

CY 2000 Rank	Tower and State	Airport Operations (000's)		
		Jan-Aug 2001*	Jan-Aug 2000	Jan-Dec 2000
1	Atlanta International, GA.....	611	615	913
2	Chicago/O'Hare Int'l., IL.....	635	602	909
3	Dallas/Ft. Worth Int'l., TX.....	571	581	866
4	Los Angeles Int'l, CA.....	530	516	784
5	Phoenix Sky Harbor Int'l, AZ.....	427	427	639
6	Detroit Metro Wayne Co., MI.....	374	375	555
7	Denver International, CO.....	360	353	529
8	Minneapolis-St. Paul Int'l, MN.....	350	352	522
9	Las Vegas/McCarran Int'l, NV.....	348	353	521
10	Miami International, FL.....	332	350	517
11	Boston/Logan Int'l, MA.....	345	340	508
12	Houston/G Bush Intercont'l, TX.....	334	326	491
13	Lambert-St. Louis Int'l, MO.....	335	326	484
14	Philadelphia Int'l, PA.....	321	321	484
15	Van Nuys, CA.....	306	334	483
16	Washington Dulles Int'l, VA.....	287	328	480
17	Covington/Cincinnati Int'l, KY.....	244	323	478
18	Charlotte/Douglas Int'l, NC.....	323	307	460
19	Newark International, NJ.....	317	304	457
20	Metropolitan Oakland Int'l.....	266	301	449
21	Pittsburgh International, PA.....	308	299	448
22	Seattle Tacoma Int'l, WA.....	289	300	446
23	San Francisco Int'l, CA.....	276	291	431
24	Denver/Centennial.....	258	281	398
25	La Guardia, NY.....	273	249	392

\*Preliminary    <sup>1</sup> Missing 2001 data

As of: 8/31/01

# 50 Busiest FAA Airport Traffic Control Towers

CY 2000 Rank	Tower and State	Airport Operations (000's)		
		Jan-Aug 2001*	Jan-Aug 2000	Jan-Dec 2000
26	Santa Ana/John Wayne, CA.....	270	264	388
27	Memphis International, TN.....	268	253	386
28	Long Beach/Daugherty, CA.....	256	261	379
29	Daytona Beach Int'l, FL.....	263	257	372
30	Orlando/Sanford, FL.....	276	250	372
31	Phoenix-Deer Valley, AZ.....	223	242	371
32	Salt Lake City Int'l, UT.....	248	247	367
33	Orlando International, FL.....	229	247	366
34	Seattle/Boeing Field, WA.....	221	253	366
35	John F. Kennedy Int'l, NY.....	230	239	359
36	Honolulu International, HI.....	231	231	345
37	Washington National, DC.....	233	228	343
38	Pontiac/Oakland Co. Int'l, MI'.....	181	233	334
39	Cleveland Hopkins Int'l, OH.....	207	225	332
40	Prescott/E. A. Love Field, AZ.....	216	210	320
41	Anchorage International, AK.....	216	225	318
42	Portland International, OR.....	208	215	317
43	Baltimore/Wash. Int'l, MD.....	222	205	315
44	Fort Worth Meacham, TX.....	174	210	301
45	San Jose International, CA.....	194	201	300
46	Chicago Midway, IL.....	190	202	298
47	Raleigh/Durham Int'l, NC.....	201	195	296
48	Fort Lauderdale/Hollywood, FL.....	209	198	292
49	Teterboro, NJ.....	180	180	283
50	Tampa International, FL.....	185	189	279

# 50 Busiest Radar Approach Control Facilities

CY 2000 Rank	Facilities/State	Instrument Ops (000s)		
		Jan-Aug 2001*	Jan-Aug 2000	Jan-Dec 2000
1	Southern Calif. TRACON, CA.....	1,601	1,649	2,451
2	New York TRACON, NY.....	1,407	1,380	2,086
3	Chicago TRACON, IL.....	951	935	1,399
4	Dallas/Ft Worth, TRACON, TX.....	917	938	1,394
5	Atlanta International, GA <sup>1</sup> .....	276	774	1,147
6	Bay TRACON, CA.....	727	715	1,073
7	Miami International, FL.....	659	674	996
8	Houston TRACON, TX.....	572	573	856
9	Phoenix TRACON, AZ.....	515	512	763
10	Washington Dulles Int'l, VA.....	470	502	746
11	Denver TRACON, CO.....	490	481	718
12	Detroit TRACON, MI.....	487	520	713
13	Minneapolis TRACON, MN.....	463	474	699
14	Philadelphia International, PA.....	451	458	686
15	Las Vegas TRACON, NV.....	442	456	678
16	Orlando International, FL.....	434	443	655
17	San Juan CERAP, PR.....	457	426	638
18	Boston TRACON, MA.....	435	427	637
19	Washington National, DC.....	439	418	630
20	St Louis TRACON, MO.....	434	424	628
21	Daytona Beach Int'l, FL.....	426	429	619
22	Seattle/Tacoma TRACON, WA.....	420	414	613
23	Covington/Cincinnati Int'l, KY.....	328	412	610
24	Tampa International, FL.....	401	405	594
25	Charlotte/Douglas Int'l, NC.....	355	387	583

\* Preliminary    <sup>1</sup>Missing 2001 data

Source: APO-130  
(202) 267-3350

As of: 8/31/01

## 50 Busiest Radar Approach Control Facilities

CY 2000 Rank	Facilities/State	Instrument Ops (000's)		
		Jan-Aug 2001*	Jan-Aug 2000	Jan-Dec 2000
26	Salt Lake City TRACON, UT.....	349	387	572
27	Pittsburgh International, PA.....	372	370	551
28	Baltimore-Washington Int'l, MD.....	369	354	540
29	Honolulu CERAP, HI <sup>1</sup> .....	167	343	512
30	Jacksonville Int'l, FL.....	332	332	502
31	Sacramento TRACON, CA.....	322	309	461
32	San Antonio Int'l, TX.....	298	302	440
33	Memphis International, TN.....	326	316	439
34	Cleveland Hopkins Int'l, OH.....	269	290	426
35	Port Columbus Int'l, OH <sup>1</sup> .....	228	265	393
36	Yankee TRACON, CT.....	258	258	385
37	Palm Beach International, FL.....	280	259	384
38	Corpus Christi, TX.....	257	266	382
39	Portland TRACON, OR.....	253	259	381
40	Pensacola TRACON, FL.....	273	243	377
41	Dayton International, OH.....	243	253	376
42	Raleigh-Durham Int'l, NC.....	255	247	375
43	Honolulu International, HI.....	240	245	363
44	Austin, TX.....	225	231	344
45	Anchorage TRACON, AK <sup>1</sup> .....	192	238	342
46	Milwaukee/Gen Mitchell Intl, WI....	232	232	336
47	Indianapolis Int'l, IN <sup>1</sup> .....	205	239	333
48	Kansas City International, MO.....	206	211	330
49	Nashville International, TN.....	202	217	314
50	Providence, RI.....	208	211	312



# Automated Flight Service Stations Activity

CY 2000 Rank	AFSS/State	Flight Services (000's)		
		Jan-Aug 2001*	Jan-Aug 2000	Jan-Dec 2000
1	Miami AIFSS, FL <sup>1</sup> .....	698	816	1,096
2	St. Petersburg, FL <sup>1</sup> .....	630	813	1,081
3	Lansing, MI <sup>1</sup> .....	372	595	858
4	Fort Worth, TX <sup>1</sup> .....	457	549	813
5	Seattle, WA <sup>1</sup> .....	286	517	741
6	Prescott, AZ <sup>1</sup> .....	372	489	727
7	Bridgeport, CT <sup>1</sup> .....	303	526	702
8	Kankakee, IL <sup>1</sup> .....	296	465	669
9	Raleigh, NC <sup>1</sup> .....	320	455	669
10	Macon, GA <sup>1</sup> .....	349	442	655
11	Columbia, MO <sup>1</sup> .....	247	481	651
12	Princeton, MN <sup>1</sup> .....	302	474	641
13	Leesburg, VA.....	433	440	640
14	Denver, CO <sup>1</sup> .....	320	477	640
15	Green Bay, WI <sup>1</sup> .....	259	456	617
16	San Angelo, TX.....	315	408	613
17	Williamsport, PA.....	365	401	587
18	Millville, NJ.....	349	392	570
19	Anderson, SC <sup>1</sup> .....	254	389	560
20	Terre Haute, IN <sup>1</sup> .....	240	379	559
21	Kenai AIFSS, AK <sup>1</sup> .....	215	377	541
22	Oakland AIFSS, CA <sup>1</sup> .....	231	361	536
23	Anniston, AL <sup>1</sup> .....	259	361	526
24	Conroe, TX <sup>1</sup> .....	301	351	516
25	Altoona, PA.....	285	339	498
26	Mc Alester, OK <sup>1</sup> .....	278	328	472
27	Albuquerque, NM <sup>1</sup> .....	259	316	468
28	Hawthorne, CA <sup>1</sup> .....	187	297	440
29	Reno, N <sup>1</sup> .....	210	275	432
30	Cleveland, OH <sup>1</sup> .....	202	310	431

\* Preliminary      <sup>1</sup> Missing 2001 data

Source: APO-130  
(202) 267-3350

Automated International Flight Service Station--AIFSS

As of: 8/31/01

# Automated Flight Service Stations Activity

CY 2000 Rank	AFSS/State	Flight Services (000's)		
		Jan-Aug 2001*	Jan-Aug 2000	Jan-Dec 2000
31	Riverside, CA <sup>1</sup> .....	211	294	429
32	Jonesboro, AR <sup>1</sup> .....	229	285	416
33	Wichita, KS <sup>1</sup> .....	191	286	416
34	Gainesville, FL <sup>1</sup> .....	242	352	399
35	Nashville, TN <sup>1</sup> .....	177	269	394
36	Dayton, OH <sup>1</sup> .....	150	269	393
37	St. Louis, MO <sup>1</sup> .....	203	255	392
38	Mc Minnville, OR <sup>1</sup> .....	173	255	374
39	Rancho Murieta, CA <sup>1</sup> .....	190	270	373
40	Burlington, VT <sup>1</sup> .....	145	280	370
41	Cedar City, UT.....	164	253	361
42	De Ridder, LA <sup>1</sup> .....	194	233	350
43	Fort Dodge, IA <sup>1</sup> .....	144	244	346
44	Columbus, NE <sup>1</sup> .....	115	244	329
45	San Diego, CA <sup>1</sup> .....	177	244	326
46	Bangor, ME <sup>1</sup> .....	142	240	323
47	Islip AIFSS, NY.....	210	226	321
48	Grand Forks, ND <sup>1</sup> .....	183	210	317
49	Buffalo, NY.....	188	213	309
50	Louisville, KY <sup>1</sup> .....	143	225	302
51	San Juan AIFSS, PR <sup>1</sup> .....	263	224	302
52	Elkins, WV.....	175	180	267
53	Great Falls, MT <sup>1</sup> .....	113	183	245
54	Greenwood, MS <sup>1</sup> .....	123	181	244
55	Jackson, TN <sup>1</sup> .....	113	165	242
56	Huron, SD <sup>1</sup> .....	111	172	235
57	Honolulu, HI <sup>1</sup> .....	120	147	223
58	Fairbanks, AK <sup>1</sup> .....	99	151	223
59	Boise, ID <sup>1</sup> .....	89	134	194
60	Casper, WY <sup>1</sup> .....	96	129	188
61	Juneau, AK <sup>1</sup> .....	62	111	154

# Airports

## Number of U.S. Airports <sup>1</sup> (As of December 31)

	2000	1999	1998
<b>Total Airports</b> .....	19,281	19,098	18,770
Public Use Airports.....	5,317	5,324	5,352
# with Paved Runways.....	3,953	3,949	3,970
# with Unpaved Runways.....	1,364	1,375	1,382
# with Lighted Runways.....	4,035	4,051	4,005
# with Unlighted Runways.....	1,282	1,273	1,347
Private Use Airports.....	13,964	13,774	13,418
# with Paved Runways.....	4,463	4,384	4,451
# with Unpaved Runways.....	9,501	9,390	8,967
# with Lighted Runways.....	1,010	918	840
# with Unlighted Runways.....	12,954	12,856	12,578
<b>Public use airports abandoned</b> .....	13	17	24
<b>Private use airports abandoned</b> .....	156	109	92
<b>Certificated Airports*</b> .....	651	655	660
Civil .....	563	565	566
Military .....	88	90	94

<sup>1</sup> Includes civil and joint-use civil-military airports, heliports, STOLports, and seaplane bases in the U.S. and its territories.

<sup>2</sup> Preliminary

\* Certificated airports serve Air Carrier Operations with aircraft seating more than 30 passengers. (FAR Part 139).

Source: AAS-330

(202) 267-8752

As of: 12/31/00

# National Airspace Total System Delays

Year	Jan	Feb	Mar	Apr	May	Jun	Jul	Aug	Sep	Oct	Nov	Dec	YTD Total
2001	27,894	31,599	29,855	30,260	36,460	41,607							197,675
2000	26,015	27,208	32,205	35,332	36,570	50,114	44,430	47,893	43,357	43,794	34,365	29,006	450,289
1999	24,345	19,851	23,180	34,046	39,533	41,602	45,162	37,189	32,833	28,223	23,330	24,822	374,116 r/
1998	27,623	24,855	24,159	22,563	29,187	37,093	25,672	30,549	20,194	23,988	20,439	19,912	306,234 r/
1997	21,588	15,856	15,055	17,453	19,177	25,068	26,193	24,816	19,388	17,812	22,337	20,516	245,259 r/

Delays of 15 minutes or longer

r/ Revised

17

As of: 6/30/01

Source: ATT-220  
(703) 904-4470

# Aircraft

## U.S. Air Carrier Activity

	CY 1999	CY 1998	CY 1997
<b>Total Number of Aircraft<sup>1</sup>.....</b>	19,145	18,754	17,990
<b>Type of Carrier</b>			
<b>Domestic, flag, supplemental,     scheduled, cargo air carriers,     and commercial     operators.....</b>	7,094	6,959	6,681
<b>Commuter Air Carriers and Air     Taxis.....</b>	12,051	11,795	11,309
<b>Total Number of Aircraft<sup>1</sup>.....</b>	19,145	18,754	17,990
<b>Type of Aircraft</b>			
<b>Jet.....</b>	7,270	6,865	6,464
<b>Turboprop.....</b>	3,740	3,535	3,207
<b>Piston.....</b>	5,757	6,065	6,167
<b>Rotary Wing.....</b>	2,378	2,289	2,152
<b>Air Carrier Traffic Statistics<sup>2</sup> (Millions)*</b>			
<b>Passenger miles flown.....</b>	668,169	635,517	605,434
<b>Passenger enplanements.....</b>	635	613	599
<b>Ton miles.....</b>	86,800	82,304	81,057
<b>Aircraft miles flown.....</b>	6,161	5,838	5,679
<b>Passenger load factor<sup>3</sup></b>			
<b>Domestic.....</b>	68.9%	70.0%	69.1%
<b>International.....</b>	74.4%	72.8%	74.1%

<sup>1</sup> Source: Vital Information System

<sup>2</sup> Includes domestic and international scheduled service, of Certificated Route Air Carriers only.

<sup>3</sup> Proportion of aircraft seating capacity that is sold.

As of: 12/31/99

Source: AFS-40  
(202) 267-3433  
\*BTS (K-25)  
(202) 366-8513

# U.S. General Aviation and Air Taxi Activity

## (Calendar Years)

	Estimated Active Aircraft (thousands)		Estimated Hours Flown (Millions)	
	1999	1998	1999	1998
<b>Total .....</b>	219.4	204.7	31.8	28.1
<b>By Type Aircraft</b>				
Piston.....	171.9	163.0	22.9	20.4
Turboprop.....	5.7	6.2	1.8	1.8
Jet.....	7.1	6.1	2.7	2.2
Rotary Wing.....	7.4	7.4	2.7	2.3
Other.....	6.8	5.6	0.3	0.3
Experimental.....	20.5	16.5	1.2	1.1
<b>By Type Flying</b>				
Public Use.....	4.1	4.0	1.1	1.4
Corporate.....	10.8	11.3	3.6	3.2
Business.....	24.5	32.6	3.6	3.5
Personal.....	147.1	124.3	11.3	9.8
Instructional.....	16.1	11.4	5.9	4.0
Aerial Application.....	4.6	4.6	1.5	1.3
Aerial Observation.....	3.2	3.2	1.2	0.8
External Load.....	0.2	0.3	0.1	0.2
Other Work Use.....	2.4	1.1	0.8	0.3
Sight Seeing.....	0.8	0.7	0.2	0.2
Air Tours.....	0.3	0.3	0.1	0.2
Air Taxi.....	4.3	4.9	1.9	2.4
Other.....	N/A	6.0	N/A	0.9
Air Medical Services...	0.8	N/A	0.5	N/A

As of: 12/31/99

Source: APO-110  
(202) 493-4236

# Aircraft Certification Service

## Aircraft Certification Mission and Program Profiles

	FY 2000	FY 1999
Type Certificates/Supplemental Type Certificates Issued.....	1,680	1,790
Other Design Approvals Issued.....	5,975	5,960
Production Approvals (Including Amendments) Issued.....	2,770	2,720
Airworthiness Certificates Issued.....	2,850	2,820
New Airworthiness Directives (AD) Issued.....	510	474
New Designees (Representative of the Administrator) Appointed.....	959	1,195
Total Active Designees.....	4,384	4,594

As of: 9/30/00

Source: AIR-503  
(202) 267-7260

## Active Pilots and Nonpilots (As of 31 December)

	2000		1999	
	Total	Women	Total	Women
<b>Pilot-Total</b> .....	<b>625,581</b>	<b>36,757</b>	<b>635,472</b>	<b>35,762</b>
Student.....	93,064	10,809	97,359	11,191
Private.....	251,561	14,554	258,749	15,171
Commercial.....	121,858	5,807	124,261	5,720
Airline Transport.....	141,596	4,411	137,642	4,126
Other <sup>1</sup> .....	17,502	1,176	17,461	1,165
<b>Nonpilot-Total<sup>2</sup></b> .....	<b>547,453</b>	<b>16,552</b>	<b>549,588</b>	<b>15,380</b>
Mechanic.....	344,434	5,047	340,402	4,722
Repairmen.....	38,208	1,704	35,989	1,582
Ground Instructor.....	72,326	5,154	10,447	5,016
Flight Engineer.....	65,098	2,076	63,591	1,841
Other <sup>3</sup> .....	27,387	2,571	25,975	2,389
<b>Flight Instructor</b> .....	<b>80,931</b>	<b>5,193</b>	<b>79,171</b>	<b>5,028</b>

<sup>1</sup> Includes helicopter (only) & glider (only), and recreational pilot certificates.

<sup>2</sup> Excludes non-pilots 70 years old or over in all certificate types except flight engineers and flight navigators.

<sup>3</sup> Includes flight navigators, parachute riggers, and dispatchers.

As of 12/31/00

Source: APO-110  
(202) 267-3352



# Industry Trends

## Scheduled U.S. Air Carrier Traffic and Financial Trends

	Oct-Jun FY 2001	Oct-Jun FY 2000	Numerical Change	Percent Change
<b>TRAFFIC</b>				
<b>ASM'S (in millions)</b>				
Majors.....	671,727	656,559	15,168	2.3
Nationals.....	49,315	41,442	7,873	19.0
Regionals.....	647	711	(64)	(9.0)
<b>Totals.....</b>	<b>721,688</b>	<b>698,712</b>	<b>22,976</b>	<b>3.3</b>
<b>RPM'S (in millions)</b>				
Majors.....	475,039	469,158	5,881	1.3
Nationals.....	33,254	27,040	6,214	23.0
Regionals.....	344	343	1	0.3
<b>Totals.....</b>	<b>508,637</b>	<b>496,541</b>	<b>12,096</b>	<b>2.4</b>
<b>Load Factor (in percent)</b>				
Majors.....	70.7	71.5	(0.8)	
Nationals.....	67.4	65.2	2.2	
Regionals.....	53.2	48.2	5.0	
<b>Totals.....</b>	<b>70.5</b>	<b>71.1</b>	<b>(0.6)</b>	
<b>FINANCIAL</b>				
<b>Revenues (in millions)</b>				
Majors.....	\$85,824	\$84,572	\$1,252	1.5
Nationals.....	8,329	8,597	(268)	(3.1)
Regionals.....	667	584	83	14.2
<b>Totals.....</b>	<b>\$94,820</b>	<b>\$93,752</b>	<b>1,067</b>	<b>1.1</b>
<b>Expenses (in millions)</b>				
Majors.....	\$86,861	\$79,499	\$7,362	9.3
Nationals.....	8,321	8,197	124	1.5
Regionals.....	664	606	58	9.6
<b>Totals.....</b>	<b>\$95,845</b>	<b>\$88,301</b>	<b>7,544</b>	<b>8.5</b>
<b>Operating Profit/Loss (in millions)</b>				
Majors.....	(\$1,037)	\$5,073	(\$6,110)	
Nationals.....	8	400	(392)	
Regionals.....	4	(22)	26	
<b>Totals.....</b>	<b>(\$1,026)</b>	<b>\$5,451</b>	<b>(\$6,477)</b>	

As of: 10/09/01

Source: APO-110  
(202) 493-4236

# U.S. Commercial Space Transportation Financial Trends

---

	CY 99	CY 00	CY 01 (Projected)
<b>Commercial Launch Revenues (in Millions)</b>	\$851	\$625	\$600

---

As of: 1/19/01

Source: AST-200  
(202) 267-8308

# Aviation Forecasts

	Actual FY 2000	Forecast FY 2004
<hr/>		
<b>FAA FACILITY WORKLOAD</b>	<b>46.0</b>	<b>50.4</b>
<b>Aircraft Handled by FAA ARTCC's (Millions)</b>		
Air Carrier.....	25.0	28.0
Air Taxi/Commuter.....	8.1	8.7
General Aviation.....	8.7	9.5
Military.....	4.2	4.2
<b>Operations Logged by FAA Towers (Millions)</b>		
Airport.....	68.7	77.5
Instrument.....	53.0	57.7
<b>Flight Services Logged by Flight Services Stations (Millions)</b>	30.5	30.1
<hr/>		
<b>CIVIL AVIATION ACTIVITY</b>		
<b>Certificated Route Air Carrier</b>		
Revenue Passenger Enplanements (Millions)*.....	658.7	754.9
Revenue Passenger Miles (Billions)*.....	684.0	817.9
<b>Air Carrier Aircraft.....</b>	<b>6,037</b>	<b>7,131</b>
<b>General Aviation Estimated</b>		
Hours Flown (Millions)**.....	32.1	35.4
Active Aircraft (Thousands)**.....	221.2	230.2
<hr/>		
<b>ESTIMATED FUEL CONSUMED BY U.S. DOMESTIC CIVIL AVIATION (Millions of Gallons)</b>		
<b>Jet Fuel</b>		
Air Carrier.....	20,175	24,092
General Aviation.....	1,035	1,383
<b>Aviation Gas</b>		
Air Carrier.....	2.0	2.0
General Aviation.....	347.1	367.0
<hr/>		
<b>Active Pilots (Thousands)** .....</b>	<b>648.5</b>	<b>714.6</b>
<hr/>		

\* Reflects update to forecasts published in FAA Aerospace Forecasts Fiscal Years 2001-2012.

\*\* Calendar Year

As of: 3/7/2001

Source: APO-110  
(202) 493-4236

# Aviation Forecasts

Actual Forecast  
FY 1999 FY 2003

---

## FAA FACILITY WORKLOAD

<b>Aircraft Handled by FAA ARTCC's (Millions)</b>	<b>44.7</b>	<b>49.0</b>
Air Carrier.....	24.0	26.9
Air Taxi/Commuter.....	7.7	8.5
General Aviation.....	8.8	9.6
Military.....	4.1	4.1
<b>Operations Logged by FAA Towers (Millions)</b>		
Airport.....	68.2	73.9
Instrument.....	51.8	56.5
<b>Flight Services Logged by Flight Services Stations (Millions)</b>	<b>32.4</b>	<b>32.2</b>

---

## CIVIL AVIATION ACTIVITY

### Certificated Route Air Carrier

Revenue Passenger Enplanements (Millions)....	629.4	713.3
Revenue Passenger Miles (Billions).....	642.8	756.8

**Air Carrier Aircraft**..... 5,668 6,856

### General Aviation Estimated

Hours Flown (Millions)*.....	29.8	32.7
Active Aircraft (Thousands)*.....	206.5	215.1

---

## ESTIMATED FUEL CONSUMED BY U.S. DOMESTIC

### CIVIL AVIATION (Millions of Gallons)

#### Jet Fuel

Air Carrier.....	19,429	22,287
General Aviation.....	888	1,191

#### Aviation Gas

Air Carrier.....	2	2
General Aviation.....	313	331

---

**Active Pilots (Thousands)\***..... 640.1 702.8

---

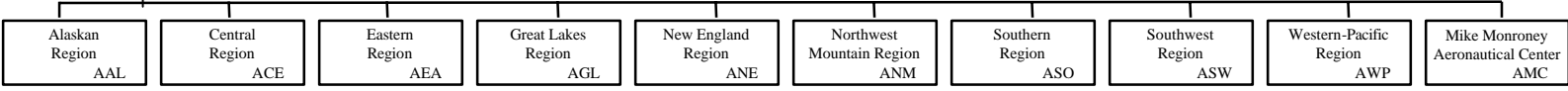
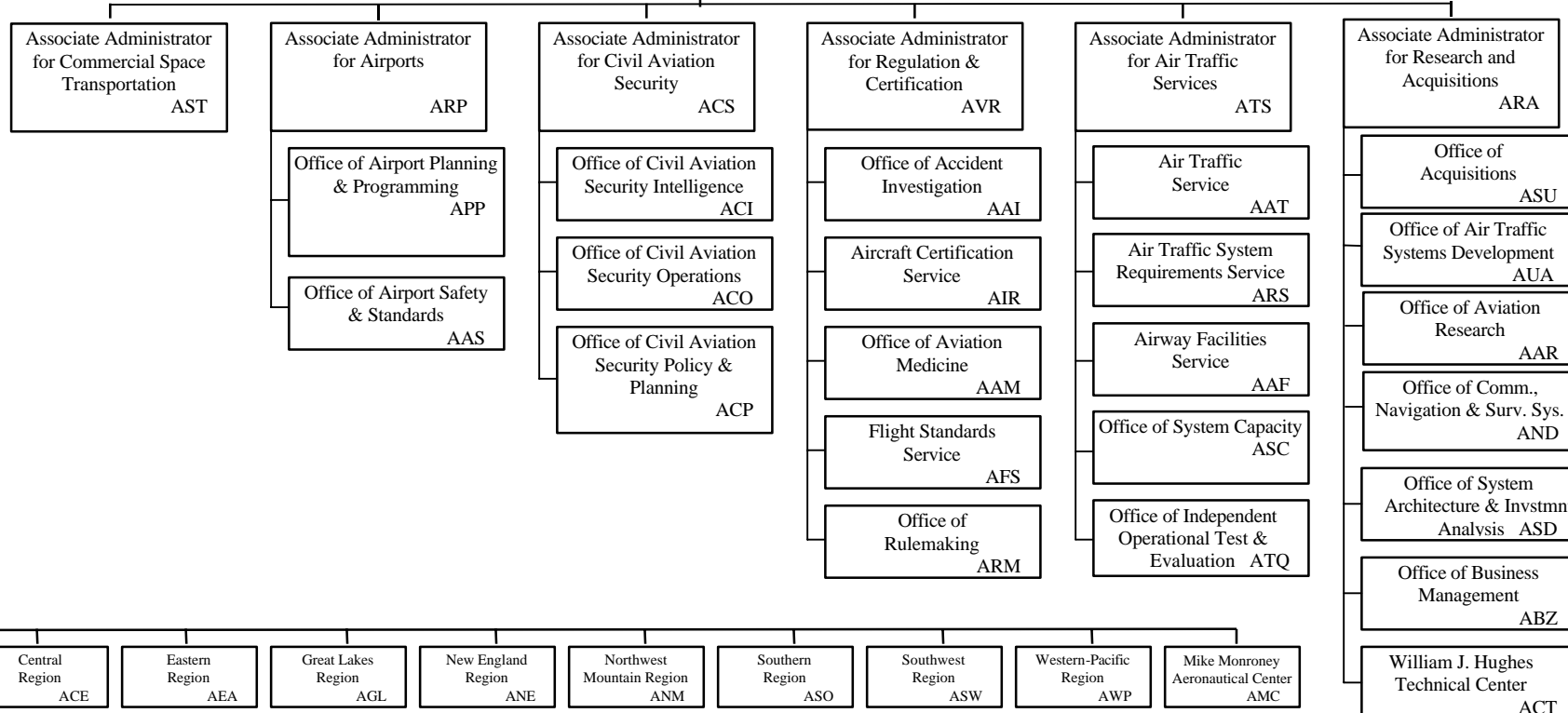
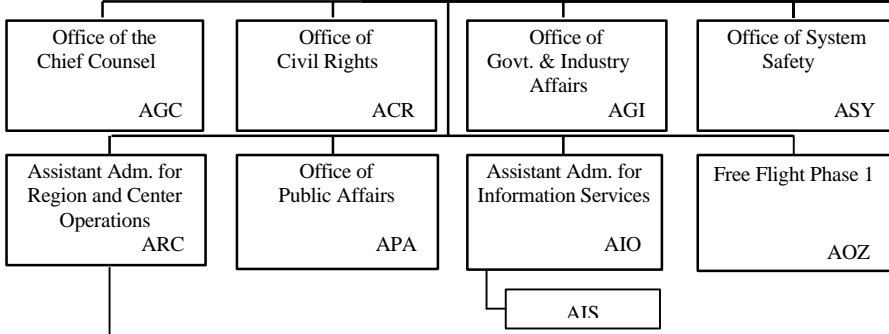
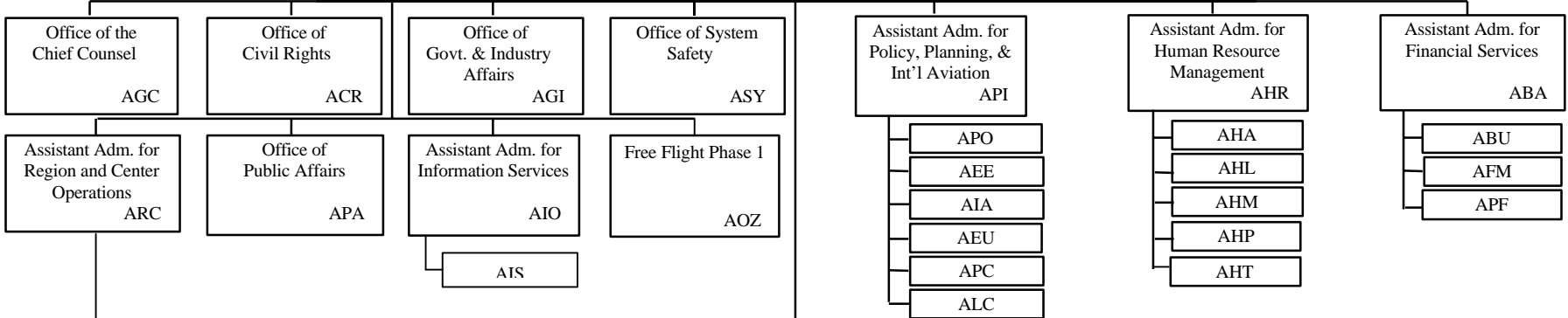
\*Calendar Year  
As of: 3/2000

Source: APO-110  
(202) 493-4236

# FEDERAL AVIATION ADMINISTRATION

Administrator  
AOA

Deputy  
Administrator  
ADA



# The Associate Administrator for Commercial Space Transportation

Since its establishment in 1984, the primary responsibilities of the Associate Administrator for Commercial Space Transportation (AST) have been to regulate the US commercial space transportation industry and license commercial launches to protect public health and safety, safety of property, national security, and foreign policy interests of the US. The Office is also responsible for encouraging, facilitating and promoting commercial launches by the private sector and for regulating non-federal or commercial space launch sites.

Licenses to conduct commercial launches are granted to commercial launch providers who demonstrate evidence of compliance with all safety regulations and other requirements for conducting commercial space launch activities. Licensees must also have sufficient insurance or financial resources to cover any probable losses from a launch mishap.

Licensed commercial launches are currently conducted at federal launch sites including Cape Canaveral Air Station, Florida; Vandenberg Air Force Base, California; Wallops Flight Facility, Wallops Island, Virginia; and White Sands Missile Range, New Mexico. Four non-federal or commercial sites are now licensed and operational to allow licensed commercial launches and other launch operations. They are the California Spaceport, located at Vandenberg Air Force Base; Spaceport Florida Authority, located at Cape Canaveral; the Virginia Space Flight Center, located on Wallops Island, Virginia; and the Kodiak Launch Complex, located on Kodiak Island, Alaska. The state of New Mexico has a proposal for the development of the Southwest Regional Spaceport in south central New Mexico.

## **AST Programs and Initiatives**

### Regulatory and Safety Program

- Licensing, Rulemaking, Insurance Determinations/Risk Assessment, Environmental Compliance, Standards, Compliance Monitoring, Enforcement, Safety Research, Reentry Spacecraft and Operations.

### Other Programs and Initiatives

- Launch Technology Development, Customer Service, Industry and Market Analysis, Federal Space Policy Development, International Launch Trade Policy, Community and Educational Outreach

### Research Areas

- Flight Safety, Launch Sites, Payload Safety, Standards, GPS, Environmental Issues, Space Safety including Orbital Debris.

**World Wide Web Address:**

<http://AST.faa.gov/>

# U.S. Commercial Space Transportation Activity and AST Licensing

	FY 1999	FY 2000	FY 2001 (Proj.)
<b>Licensed Commercial Launches</b>			
<b>TOTAL</b>	<b>18</b>	<b>12</b>	<b>16</b>
<b>Number of Orbital Launches</b>	18	12	15
<b>Number of Sub-Orbital Launches</b>	0	0	1
<b>By Launch Vehicle Type</b>			
Delta Family (Boeing Company)	7	2	3
Atlas Family (Lockheed Martin)	5	4	3
Pegasus (Orbital Sciences Corp.)	2	2	2
Athena 1&2 (Lockheed Martin)	3	0	1
Iaurus (Orbital Sciences Corp.)	0	1	1
Zenit (KB Yuzhnoye, Ukraine)	1	3	3
Other	1	0	3
<b>By Payload Type</b>			
GEO <sup>1</sup> Communications Satellites	8	8	9
LEO <sup>2</sup> Communications Satellites	5	2	0
Scientific Satellites	3	1	1
Remote Sensing Satellites	3	0	3
Microgravity or Sub-orbital Payloads	0	0	1
Mass Simulator / Testing	1	1	2
<b>By Launch Site (Federal)</b>			
Cape Canaveral Air Station, FL	13	6	6
Vandenberg AFB, CA	4	1	3
Wallops Flight Facility, VA	0	1	0
White Sands Missile Range, NM	0	0	0
Kwajalein Missile Range	1	0	1
<b>By Launch Site (Non-Federal)</b>			
California Spaceport	0	0	0
Spaceport Florida Authority	0	0	0
Virginia Space Flight Center	0	0	0
Pacific Ocean Platform	1	3	3
Kodiak Launch Complex, AK	0	0	1
International Site	0	0	2
<b>Number of Licenses</b>			
New	3	6	8
Renewal	4	1	4
Amendments	18	5	3

<sup>1</sup> GEO: Geosynchronous Earth orbit-approx. 22,300 miles above the equator.

<sup>2</sup> LEO: Low Earth Orbit- from 100-1000 nautical miles.

## United States Commercial Space Launch Schedule, CY 2001

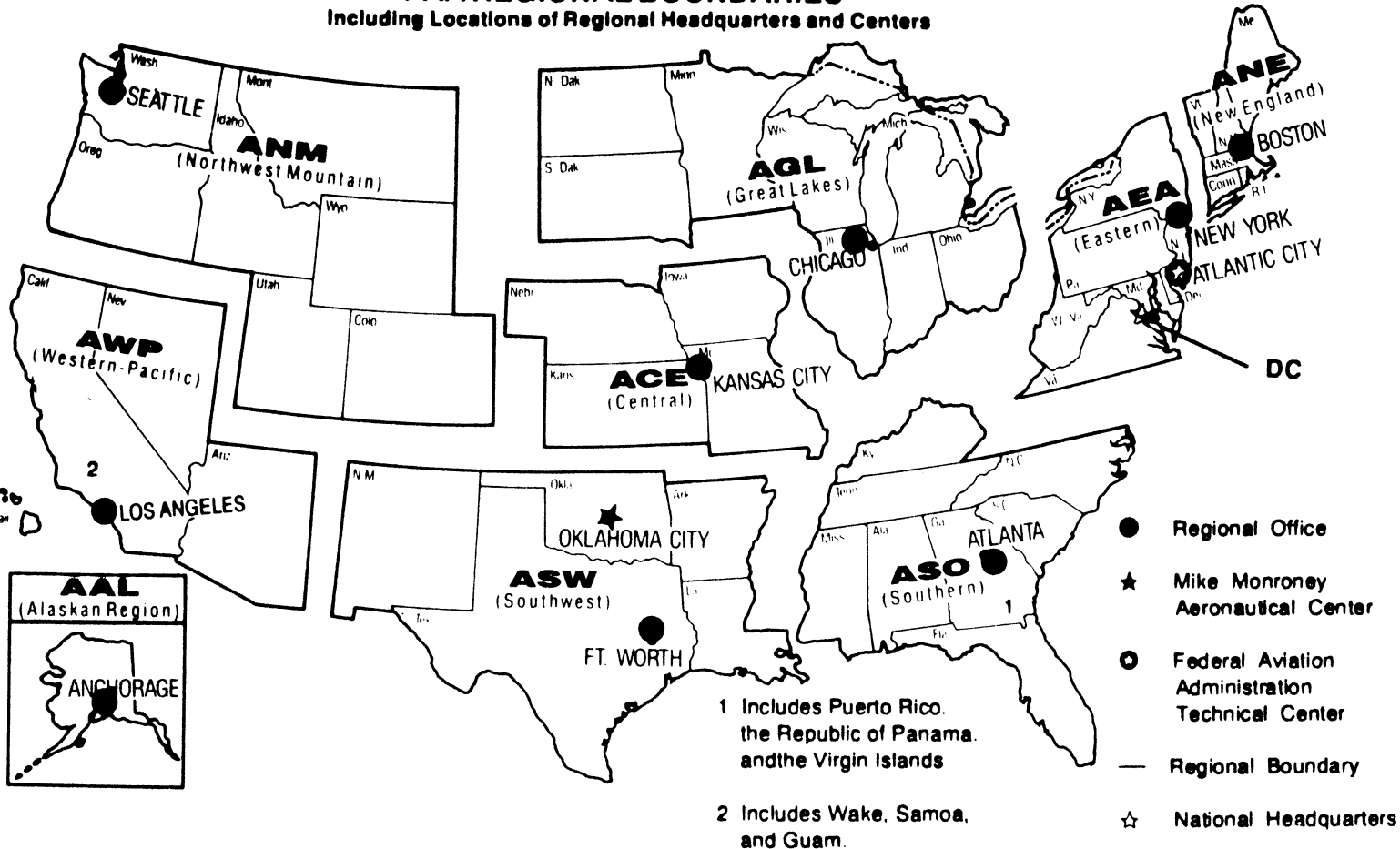
Payload (Country)/ Description	Launch Company/ Vehicle	Launch Date/ Launch Site	
<i>XM-1 (Int'l)</i> Comm. Satellite	Sea Launch Zenit-3SL	February 28, 2001 Pacific Ocean Platform	
<i>IOS (US)</i> Scientific Payload	InterOrbital Systems Tachyon	March 2001 Pacific Ocean Platform	
<i>XM-1 (International)</i> Comm. Satellite	Sea Launch Zenit-3SL	April 2001 Pacific Ocean Platform	
<i>Orbview 4 (US)</i> Remote Sensig Satellite	Orbital Sciences Corp. Taurus	May 30, 2001 Vandenberg AFB, CA	
<i>Galaxy IIIC (US)</i> Comm. Satellite	Sea Launch Zenit 3SL	May 2001 Pacific Ocean Platform	
<i>DIRECTV-5 (US)</i> Comm. Satellite	Lockheed Martin Atlas IIAS	May 2001 Cape Canaveral, FL	
<i>Orbview 3 (US)</i> Remote Sensing Satellite	Orbital Sciences Corp. Pegasus XL	June 2001 Vandenberg AFB, CA	
<i>HyShot (Int'l)</i> Technology Testing	Astrotech Space Terrier-Orion	June 2001 Woomera, Australia	
<i>HyShot (Int'l)</i> Technology Testing	Astrotech Space Terrier-Orion	June 2001 Woomera, Australia	
<i>Demonstration Satellite (US)</i>	The Boeing Company Delta 4	November 2001 Cape Canaveral, FL	
<i>Earthwatch (US)</i> Remote Sensing Satellite	Lockheed Martin Athena 2	November 2001 Kodiak Launch Complex, AK	
<i>ORBCOMM-5 (US)</i> LEO Comm Satellite	Orbital Sciences Corp. Pegasus	December 2001 Kwajalein Missile Range	

As of 1/19/01

Source: AST-200  
(202) 267-8308



**U.S. DEPARTMENT OF TRANSPORTATION  
Federal Aviation Administration  
FAA REGIONAL BOUNDARIES**  
Including Locations of Regional Headquarters and Centers



# FAA Resources

---

## FAA Employment (Permanent Employees)<sup>1</sup>

	FY 00	FY 01 Revised
<b>Line of Business</b>		
Air Traffic Services (ATS).....	35,425	36,349
Regulation and Certification (AVR).....	5,864	6,195
Civil Aviation Security (ACS).....	1,153	1,221
Airports (ARP).....	446	472
Research and Acquisitions (ARA).....	1,898	1,858
Comm. Space Transportation (AST)....	25	44
Staff Offices.....	3,652	3,762
<b>Total.....</b>	<b>48,463</b>	<b>49,901</b>
<b>Region/Center/Headquarters (included in above total)</b>		
Aeronautical Center.....	1,566	1,582
Alaskan.....	1,358	1,406
Central.....	2,511	2,587
Eastern.....	5,326	5,411
Great Lakes.....	6,515	6,588
New England.....	1,923	1,996
Northwest Mountain.....	4,175	4,224
Southern.....	7,718	7,883
Southwest.....	5,340	5,430
Western-Pacific.....	5,562	5,661
Washington Headquarters (only) <sup>2</sup> .....	3,672	4,109
Washington Headquarters Field <sup>3</sup> .....	1,825	2,055
Technical Center.....	972	969

<sup>1</sup> Full time permanent and part time permanent employees only.

<sup>2</sup> Washington Headquarters employees physically located in FOB-10A and surrounding areas (i.e. Portals, Market Square, etc.).

<sup>3</sup> Washington Headquarters employees physically located in the Field (i.e. Technical Center, Aeronautical Center, etc.)

Source: APF-100

(202) 267-9946

As of: 9/30/01

# FAA Percent Minority & Female Employment<sup>1</sup>

Lines of Business/Region/Center/Headquarters	% Minority		%Female	
	FY 00	FY 01 r	FY 00	FY 01r
AirTraffic Services (ATS).....	16.4	16.8	18.7	19.1
Regulation and Certification (AVR).....	17.4	17.9	28.7	28.3
Civil Aviation Security (ACS).....	27.9	27.7	41.9	42.3
Airports (ARP).....	24.7	23.3	38.1	39.6
Research and Acquisitions (ARA).....	27.4	27.5	37.8	38.2
Commercial Space Transportation (AST).....	32.0	45.4	20.0	31.8
Staff Offices.....	31.9	32.0	53.4	54.0
<b>Total.....</b>	<b>18.5</b>	<b>18.9</b>	<b>24.0</b>	<b>24.3</b>
Aeronautical Center.....	23.8	23.7	42.3	43.4
Alaskan.....	14.0	13.8	25.6	25.3
Central.....	13.8	14.2	24.8	24.7
Eastern.....	15.0	15.4	19.0	19.4
Great Lakes.....	10.7	10.7	20.3	20.6
New England.....	7.6	7.7	21.3	21.0
Northwest Mountain.....	11.8	12.0	22.2	22.7
Southern.....	19.9	20.3	19.9	19.9
Southwest.....	20.2	21.2	20.5	20.6
Western-Pacific.....	28.4	28.6	20.7	20.8
Washington Headquarters (only) <sup>2</sup> .....	33.1	32.5	46.3	45.0
Washington Headquarters Field <sup>3</sup> .....	15.7	18.1	30.2	31.0
Technical Center.....	20.7	20.1	31.8	32.4

<sup>1</sup> Full-time permanent, and part-time permanent employees only (FTE 1111 & 1132).

<sup>2</sup> Washington Headquarters employees physically located in FOB-10A and surrounding areas (i.e. Portals, Market Square, etc.).

<sup>3</sup> Washington Headquarters employees physically located in the Field (i.e. Technical Center, Aeronautical Center, etc.).

r Revised

# Major Work Force Employment

	Employment <sup>1</sup>				
	FY99	FY 00	FY01	% Change	Actual Change
Air Traffic Controller Work Force ATCS <sup>2</sup> (bargaining unit employees)	17,469	17,423	17,510	0.5%	87
Traffic Management Coordinators <sup>2</sup>	14,902	14,904	14,997	0.6%	93
Operations Supervisors <sup>2</sup>	600	622	787	26.5%	165
Flight Service Stations	1,967	1,897	1,726	-9.0%	-171
Field Maintenance (210-211 only)	3,017	2,976	2,934	-1.4%	-42
Security Work Force	8,070	7,830	8,188	-3.0%	358
Airports Work Force	1,136	1,136	1,172	0.0%	36
Research & Acquisition Work Force <sup>3</sup>	480	440	461	-8.3%	21
Aircraft Certification	1,991	1,945	1,910	-2.3%	-35
Flight Standards Work Force	980	992	1,025	1.2%	33
	4,357	4,206	4,476	-3.5%	270

<sup>1</sup> Full time permanent appointments (operations direct).

<sup>2</sup> Included in Air Traffic Controller Work Force Total.

<sup>3</sup> Includes direct operations, F&E, and R,E&D.

Note: Traffic Management Supervisors (TMS) are no longer included in Controller Work Force.

Source: APF-100  
(202) 267-9946

As of: 9/30/01

# Labor Relations

	BARGAINING UNITS	LABOR AGREEMENTS	EMPLOYEES REPRESENTED
<b>Unions.....</b>	<b>47</b>	<b>17</b>	<b>38,886</b>
AFGE.....	11	5	1,400
AFSCME (HQ).....	5	0	1,900
LIUNA.....	1	1	150
NAATS.....	1	1	2,400
NAGE.....	3	1	400
NATCA (AT).....	3	1	16,300
NATCA (AF).....	5	1	1,400
NATCA (HQ).....	7	0	1,511
NFFE.....	2	2	1,600
NUDAI.....	1	0	25
PAACE.....	3	2	400
PASS (AF/AEA).....	1	1	7,500
PASS (AVN).....	1	1	250
PASS (AFS).....	2	1	3,500
PASS (AIR).....	1	0	150

AFGE	--American Federation of Government Employees
AFSCME	--American Federation of State, County, and Municipal Employees
LIUNA	--Laborer's International Union of North America
NAATS	--National Association of Air Traffic Specialists
NAGE	--National Association of Government Employees
NACTA	--National Air Traffic Controllers Association
NFFE	--National Federation of Federal Employees
NUDAI	--National Union of Drug Abatement Inspectors
PAACE	--Professional Association of Aeronautical Center Employees
PASS	--Professional Airway System Specialists

As of: 4/23/01

Source: AHL-200  
(202) 267-3375

# FAA Finances

## (In Millions of Dollars)

	FY 2000	FY 2001	FY 2002
	Actual	Est.	Est.
<b>Budget Authority</b>			
Grants-In-Aid (Obligation Limitation).....	1,896	3,193	3,300
Research, Engineering, & Development.....	156	187	188
Facilities and Equipment.....	2,034 <sup>1/</sup>	2,651	2,914
Operations.....	5,958 <sup>2/</sup>	6,516	6,886
<b>Total.....</b>	<b>10,044</b>	<b>12,547</b>	<b>13,288</b>
<b>Obligations Incurred--Operations</b>			
<b>Appropriation by Budget Activity</b>			
Air Traffic Services.....	4,670	5,185	5,447
Regulation and Certification.....	645	706	745
Civil Aviation Security.....	136	139	150
Research and Acquisitions.....	174	190	197
Commercial Space Transportation.....	6	12	15
Regions/Center Operations.....	85	99	91
Human Resources.....	66	55	75
Financial Services.....	40	48	51
Staff Offices.....	76	105	116
<b>Total.....</b>	<b>5,898</b>	<b>6,539</b>	<b>6,887</b>
<b>Airport Grant Obligations (NET)</b>			
Primary Airports & Cargo.....	612	1,162	1,151
States/Territories/Insular/Alaska Supp.....	353	649	668
Carryover Entitlements.....	136	133	133
Discretionary Fund.....	750	1,196	1,274
<b>Total.....</b>	<b>1,851</b>	<b>3,140</b>	<b>3,226</b>
<b>Total FAA Outlays.....</b>	<b>9,561</b>	<b>11,021</b>	<b>10,558</b>
<b>Trust Fund Receipts from Excise Taxes</b>			
Passenger Ticket Tax.....	5,103	5,273	5,603
Passenger Flight Segment Tax.....	1,655	1,830	2,057
Waybill Tax.....	500	640	683
Fuel Tax.....	887	1,000	1,044
International Departure/Arrival Tax.....	1,349	1,412	1,528
Rural Airports Tax.....	86	91	97
Frequent Flyer Tax.....	159	168	172
Interest on Investment.....	805	871	996
Offsetting Collections.....	144	96	96
<b>Total.....</b>	<b>10,688</b>	<b>11,381</b>	<b>12,276</b>

Numbers may not add due to rounding.

1/ Reflects \$30 million rescission.

2/ Includes \$75 million supplemental and rescission of \$10.8 million in unobligated Y2K balance.

Source: ABU-100  
(202) 267-9070

# FAA NAS Operational Facilities and FAA Aircraft (As of December 31)

	2000	1999	1998
<b>NAS Operational Facilities<sup>1</sup></b> .....	<b>40,921</b>	<b>40,360</b>	<b>38,209</b>
Communications.....	14,103	13,901	13,437
Automation.....	3,889	3,802	3,157
Environment.....	6,620	6,391	5,872
Navigation.....	11,211	11,265	11,164
Surveillance.....	1,794	1,764	1,660
Weather.....	3,304	3,237	2,919
<b>Air Traffic Control Facilities<sup>2</sup></b>			
Air Route Traffic Control Center.....	21	21	21
Airport Traffic Control Tower.....	496	492	467
Flight Service Stations.....	75	77	76
Automated Flight Service Stations	61	61	61
<b>FAA Aircraft*</b> .....	<b>50</b>	<b>49</b>	<b>48</b>

<sup>1</sup> Excludes non-federal facilities and foreign facilities.

<sup>2</sup> Included in NAS operational facilities.

Source: AOP-200  
(202) 267-5928  
ASW-280\*  
(405) 954-6231

As of: 12/31/00

# FAA Officials

## Washington Headquarters

Routing Symbol	Officials
<b>AOA</b> .....	<b>Administrator</b> <b>Jane F. Garvey, 267-3111</b> Thomas Zoeller, Chief of Staff, 267-3111
<b>ADA</b> .....	<b>Deputy Administrator</b> <b>Monte R. Belger (Actg.), 267-8111</b> Shirley S. Miller, Executive Assistant, 267-8111
<b>AOZ*</b> .....	<i>Free Flight</i> <i>Director, John Thornton (Actg.), 220-3300</i>
<b>AIO</b> .....	<b>Assistant Administrator for Information Services</b> <b>Daniel J. Mehan, CIO, 493-4570</b> Deputy, Arthur Pyster, 493-4570
<b>AIS*</b> .....	<i>Office of Information Systems</i> <i>Director, Michael F. Brown, 267-7104</i>
<b>ASY</b> .....	<b>Assistant Administrator for System Safety</b> <b>Christopher A. Hart, 267-3611</b> Deputy, Daniel C. Hedges, 267-3611
<b>AGC*</b> .....	<b>Chief Counsel</b> <b>David G. Leitch, 267-3222</b> Deputy, James Whitlow, 267-3773
<b>ACR</b> .....	<b>Assistant Administrator for Civil Rights</b> <b>Fanny Rivera, 267-3254</b> Deputy, Barbara A. Edwards, 267-3264
<b>AGI</b> .....	<b>Asst. Administrator for Government &amp; Industry Affairs</b> <b>Quentin Burgess (Actg.), 267-3277</b> Deputy, Vacant, 267-8211
<b>APA</b> .....	<b>Assistant Administrator for Public Affairs</b> <b>Scott M. Brenner, 267-3883</b> Deputy, Laura Brown, 267-3883
<b>API*</b> .....	<b>Asst. Administrator for Policy, Planning, and Intl. Aviat.</b> <b>Louise E. Maillott (Actg.), 267-3033</b> Deputy, Vacant, 267-3927
<b>APO</b> .....	<i>Office of Aviation Policy and Plans</i> <i>Director, John M. Rodgers, 267-3274</i>
<b>AEE</b> .....	<i>Office of Environment and Energy</i> <i>Director, Carl Bureson, 267-3576</i>
<b>AIA*</b> .....	<i>Office of International Aviation</i> <i>Director, John R. Hancock (Actg.), 267-8112</i>
<b>ARC</b> .....	<b>Assistant Administrator for Region/Center Operations</b> <b>Ruth Leverenz, 817-222-5001 / 202-267-7369</b>



# FAA Officials

## Washington Headquarters--(Cont)

Routing Symbol	Officials
<b>ABA</b> .....	<b>Assistant Administrator for Financial Services</b> <b>Christoph P. Bertram, CFO, 267-9105</b> Deputy, John F. Hennigan, 267-8928
<b>ABU</b> .....	<i>Office of Budget</i> Director, J. Brian Riley, 267-8010
<b>AFM*</b> .....	<i>Office of Financial Management</i> Director, David M. Zavada, 267-3018
<b>APF*</b> .....	<i>Office of Cost and Performance Management</i> Director, Tim Lawler, 267-7140
<b>AHR</b> .....	<b>Assistant Administrator for Human Resource Management</b> <b>Glenda Tate, 267-3456</b> Deputy, Mary Ellen Dix, 267-3850
<b>AHP</b> .....	<i>Office of Personnel</i> Director, Roger M. Edwards, 267-3850
<b>AHL</b> .....	<i>Office of Labor &amp; Employee Relations</i> Director, Melvin Harris, 267-3979
<b>AHD</b> .....	<i>Office of Organization, Learning &amp; Development</i> Director, Paul Longanbach, 267-9041
<b>AHM*</b> .....	<i>Center for Management Development</i> Director, Barbara J. Smith (Actg.), 386-446-7136
<b>AHA</b> .....	<i>Office of the Accountability Board</i> Director, Barbara J. Smith, 267-8015
<b>AST</b> .....	<b>Assoc. Adm. for Commercial Space Transportation</b> <b>Patricia Grace Smith, 267-7793</b> Deputy, Joseph A. Hawkins, 267-7848
<b>ARP</b> .....	<b>Associate Administrator for Airports</b> <b>Woodie Woodward (Actg.), 267-9471</b> Deputy, Paul L. Galis, 267-8738
<b>APP</b> .....	<i>Office of Airport Planning &amp; Programming</i> Director, Catherine M. Lang, 267-8775
<b>AAS</b> .....	<i>Office of Airport Safety and Standards</i> Director, David L. Bennett, 267-3053
<b>ACS*</b> .....	<b>Associate Administrator for Civil Aviation Security</b> <b>Lynne A. Osmus, 267-9863</b> Deputy, Lynne A. Osmus, 267-3969
<b>ACI*</b> .....	<i>Office of Civil Aviation Security Intelligence</i> Director, Claudio Manno, 267-9075
<b>ACO*</b> .....	<i>Office of Civil Aviation Security Operations</i> Director, Eugene Ross Hamory, 267-8537
<b>ACP*</b> .....	<i>Office of Civil Aviation Security Policy and Planning</i> Director, Lee Longmire, 267-8058

# FAA Officials

## Washington Headquarters--(Cont.)

Routing Symbol	Officials
AVR*	<b>Associate Administrator for Regulation &amp; Certification</b> <b>Nicholas A. Sabatini, 267-3131</b> Deputy, Peggy Gilligan, 267-7804
AAI	<i>Office of Accident Investigation</i> Director, Steven B. Wallace, 267-9612
AIR	<i>Aircraft Certification Service</i> Director, John J. Hickey, 267-8235
AAM	<i>Office of Aviation Medicine</i> Director, Jon L. Jordon, MD, 267-3535
AFS*	<i>Flight Standards Service</i> Director, Ava L. Mims (Actg.), 267-8237
ARM	<i>Office of Rulemaking</i> Director, Anthony F. Fazio, 267-9677
ATS	<b>Associate Administrator for Air Traffic Services</b> <b>Steven J. Brown (Actg.), 267-7111</b> Deputy, Peter H. Challan, 267-3133
AAT	<i>Air Traffic Service</i> Director, Bill G. Peacock, 267-3666
AAF	<i>Airway Facilities Service</i> Director, Alan Moore, 267-8181
ASC	<i>Office of System Capacity and Requirements</i> Director, Paula R. Lewis, 267-7370
AIQ	<i>Independent Operational Test and Evaluation</i> Director, A. Martin Phillips, 267-3341
ARS	<i>Air Traffic System Requirements Service</i> Director, James H. Washington, 385-7500
ATB	<i>Terminal Business Service</i> Director, William Voss, 264-3500
ARI	<i>Runway Safety</i> Director, William S. Davis, 267-9131
ARA	<b>Associate Administrator for Research and Acquisitions</b> <b>Steven Zaidman, 267-7222</b> Deputy, Dennis DeGaetano, 267-7222
ASU	<i>Office of Acquisitions</i> Director, Gilbert B. Devey, 267-8513
AUA	<i>Office of Air Traffic Systems Development</i> Director, Gregory D. Burke (Actg.), 493-0313
AAR	<i>Office of Aviation Research</i> Director, Herman Rediess, Ph.D., 267-9251
AND	<i>Office of Communications, Navigation, &amp; Surveillance Sys.</i> Director, Carl McCullough, 267-3555
ASD	<i>Office of System Architecture and Investment Analysis</i> Director, John A. Scardina, 358-5238
ABZ	<i>Office of Business Management</i> Director, Lauraline Gregory, 267-3616

Duty Officer

(202) 267-3333

# FAA Officials

## Major Field Organizations

Routing Symbol	Officials
<b>AAL</b> .....	<b>Alaskan Region, Regional Administrator</b> <b>Patrick N. Poe, 907-271-5645</b> 222 West 7th Avenue, Box 14 Anchorage, Alaska 99513-7587 Duty Officer, 907-271-5936
<b>ACE*</b> .....	<b>Central Region, Regional Administrator</b> <b>Christopher Blum, 816-329-3050</b> 901 Locust Kansas City, Missouri 64106 Duty Officer, 816-329-3000
<b>ACT</b> .....	<b>William J. Hughes Technical Center, Director</b> <b>Anne Harlan, Ph.D., 609-485-6641</b> Atlantic City International Airport New Jersey 08405 Duty Officer, 609-485-6482
<b>AEA</b> .....	<b>Eastern Region, Regional Administrator</b> <b>Arlene B. Feldman, 718-553-3000</b> 1 Aviation Plaza 159-30 Rockaway Blvd. Jamaica, New York 11434-4809 Duty Officer, 718-553-3100
<b>AGL</b> .....	<b>Great Lakes Region, Regional Administrator</b> <b>Cecelia Hunziker, 847-294-7294</b> 2300 East Devon Avenue Des Plaines, Illinois 60018 Duty Officer, 847-294-8400
<b>AMC</b> .....	<b>Mike Monroney Aeronautical Center, Director</b> <b>Lindy Ritz, 405-954-4521</b> 6500 South MacArthur Oklahoma City, Oklahoma 73125 Duty Officer, 405-954-3583

# FAA Officials

## Major Field Organizations--(Cont.)

Routing Symbol	Officials
<b>ANE</b> .....	<b>New England Region, Regional Administrator</b> <b>Robert S. Bartanowicz, 781-238-7020</b> 12 New England Executive Park Burlington, Massachusetts 01803 Duty Officer, 781-238-7001
<b>ANM</b> .....	<b>Northwest Mountain Region, Regional Administrator</b> <b>Larry Andriesen, 425-227-2001</b> 1601 Lind Avenue, S.W. Renton, Washington 98055-4056 Duty Officer, 425-227-2000
<b>ASO</b> .....	<b>Southern Region, Regional Administrator</b> <b>Carolyn Blum, 404-305-5000</b> 1701 Columbia Avenue College Park, Georgia 30337 Duty Officer, 404-305-5180
<b>ASW</b> .....	<b>Southwest Region, Regional Administrator</b> <b>Ruth Leverenz, 817-222-5001</b> 2601 Meacham Blvd. Ft. Worth, Texas 76137-4298 Duty Officer, 817-222-5006
<b>AWP</b> .....	<b>Western-Pacific Region, Regional Administrator</b> <b>William C. Withycombe, 310-725-3550</b> 15000 Aviation Boulevard Hawthorne, California 90261 Duty Officer, 310-725-3300

# FAA Officials

---

## International Area Offices

Routing Symbol	Officials
<b>AEU</b> .....	<b>Europe, Africa, &amp; Middle East Area Office, Director</b> <b>Paul Feldman, 011.32.2.508.2700</b> American Embassy, Brussels PSC 82 Box 002 APO AE 09724-1011
<b>ALC</b> .....	<b>Latin America &amp; Caribbean Area Office, Director</b> <b>Joaquin Archilla, 305-716-3300</b> 8600 NW 36th Street Miami, FL 33166
<b>APC*</b> .....	<b>Asia-Pacific Area Office, Director</b> <b>Elizabeth E. Erickson, 011.65.543.1466</b> American Embassy 27 Napier Road Singapore 258508

# FAA STRATEGIC PLAN

## SAFETY

**GOAL:** *By 2007, reduce U.S. aviation fatal accident rates by 80% from 1996 levels.*

### **Outcome Measures:**

*Fatal Aircraft Accident Rate:* By 2007, reduce the U.S. aviation fatal accident rate per aircraft departure, as measured by a three-year moving average, by 80 percent from the three-year average of 1994-96.

*Overall Aircraft Accident Rate:* Reduce the rate per aircraft departure.

*Fatalities and Losses by Type of Accident:* Reduce the number and type of fatalities and losses from accidents that occur for each major type of accident.

*Occupant Risk:* Reduce the risk of mortality to a passenger or flight crew member on a typical flight.

### **Strategic Focus Areas:**

*Regulatory Reform:* Implement a regulatory process that is timely, responsive, and consistently applied.

*Safety information Sharing and Analysis:* Develop partnerships with the aviation community to share data and information supporting safe, secure aviation.

*Surveillance/Inspection:* Develop new approaches to working with others on inspection and surveillance and targeting FAA resources where they will do the most good.

*Accident Prevention:* Based on detailed root cause analysis, prevent accidents before they happen through appropriate, targeted, systematic interventions in the aviation system.

As of 3/31/99

Source: APO-120  
(202) 267-3220

## **Security**

**GOAL: Prevent security incidents in the aviation system.**

### **Outcome Measures:**

*Explosive Device and Weapons Detection:* Increase ability to detect improvised explosive devices (through use of simulants) and weapons with no significant increase in operational impact - in checked and carry-on baggage and on the person.

*Compliance with Security Requirements:* Increase as measured by compliance audits.

*Risk and Vulnerability at Airports and Airway Facilities:* Reduce as measured by risk assessments.

### **Strategic Focus Areas:**

*New Security Baseline:* Continue to improve the baseline security system for civil aviation.

*Performance and Procedures:* Maximize the performance capability of people working in security for air carriers and airport operators and at FAA facilities.

*Information Security Architecture:* Develop a systematic information security architecture that describes the future NAS information security system FAA will build toward.

## SYSTEM EFFICIENCY

*GOAL: Provide an aerospace transportation system that meets the needs of users and is efficient in the application of FAA and aerospace resources.*

### *Outcome Measures:*

*System Flexibility:* Reduce total number of published ATC preferential routes by 7%.

*User Access:* Reduce the average call waiting times for Automated Flight Service Stations (AFSS) by 20%.

*System Delays:* Reduce the rates of volume and equipment related delays by 20%.

### *Strategic Focus Areas:*

*NAS Modernization:* Using the NAS Architecture as the guideline, continually refine and update the NAS to achieve efficient aerospace systems and operations.

*Free Flight:* Within safety consideration, work toward giving aircraft the opportunity to fly in the way that gives them the most benefit as they define it.

*Systems Integration:* Integrate airport and commercial space requirements into NAS planning and architecture.



## **ENABLING GOALS:**

### **People: The Foundation of Accomplishment**

Provide a model work environment supporting the productive, diverse, and highly skilled workforce needed to carry out the FAA mission into the twenty-first century. To accomplish this, FAA will focus on:

*Intellectual Capital*

*Managing the Diverse Work Force*

*Quality of Work Life*

### **Reform: The Framework for Accomplishment**

Fundamentally change the way the FAA operates by implementing personnel and acquisition reform and pursuing financial reform. FAA will focus on:

*Acquisition Reform*

*Personnel Reform*

*Financial Reform*

### **The Environment: Our Responsibility**

Address what may represent the single greatest challenge to the continued growth and prosperity of civil aerospace as we enter the twenty first century, focusing on:

*Understanding Aerospace Environmental Impacts*

*Reducing Aerospace Environmental Impacts of FAA Activities*

*Quantify and Mitigate Environmental Impacts of FAA Activities*

### **Global Leadership: Commitment to Worldwide Improvements**

*Improve safety, security and system efficiency globally through:*

*International Safety Oversight*

*Global Safety Action Plan*

*Global CNS/ATM Development and Implementation*

*International Regulatory Harmonization*

# 2001

## January

	<b>1</b>	2	3	4	5	6
7	8	9	10	11	12	13
14	<b>15</b>	16	17	18	19	20
21	22	23	24	25	26	27
28	29	30	31			

## March

				1	2	3
4	5	6	7	8	9	10
11	12	13	14	15	16	17
18	19	20	21	22	23	24
25	26	27	28	29	30	31

## May

		1	2	3	4	5
6	7	8	9	10	11	12
13	14	15	16	17	18	19
20	21	22	23	24	25	26
27	<b>28</b>	29	30	31		

## July

1	2	3	<b>4</b>	5	6	7
8	9	10	11	12	13	14
15	16	17	18	19	20	21
22	23	24	25	26	27	28
29	30	31				

## September

						1
2	<b>3</b>	4	5	6	7	8
9	10	11	12	13	14	15
16	17	18	19	20	21	22
23	24	25	26	27	28	29
30						

## November

				1	2	3
4	5	6	7	8	9	10
<b>11</b>	12	13	14	15	16	17
18	19	20	21	<b>22</b>	23	24
25	26	27	28	29	30	

## February

				1	2	3
4	5	6	7	8	9	10
11	12	13	14	15	16	17
18	<b>19</b>	20	21	22	23	24
25	26	27	28			

## April

1	2	3	4	5	6	7
8	9	10	11	12	13	14
15	16	17	18	19	20	21
22	23	24	25	26	27	28
29	30					

## June

					1	2
3	4	5	6	7	8	9
10	11	12	13	14	15	16
17	18	19	20	21	22	23
24	25	26	27	28	29	30

## August

			1	2	3	4
5	6	7	8	9	10	11
12	13	14	15	16	17	18
19	20	21	22	23	24	25
26	27	28	29	30	31	

## October

	1	2	3	4	5	6
7	<b>8</b>	9	10	11	12	13
14	15	16	17	18	19	20
21	22	23	24	25	26	27
28	29	30	31			

## December

						1
2	3	4	5	6	7	8
9	10	11	12	13	14	15
16	17	18	19	20	21	22
23	24	<b>25</b>	26	27	28	29
30	31					