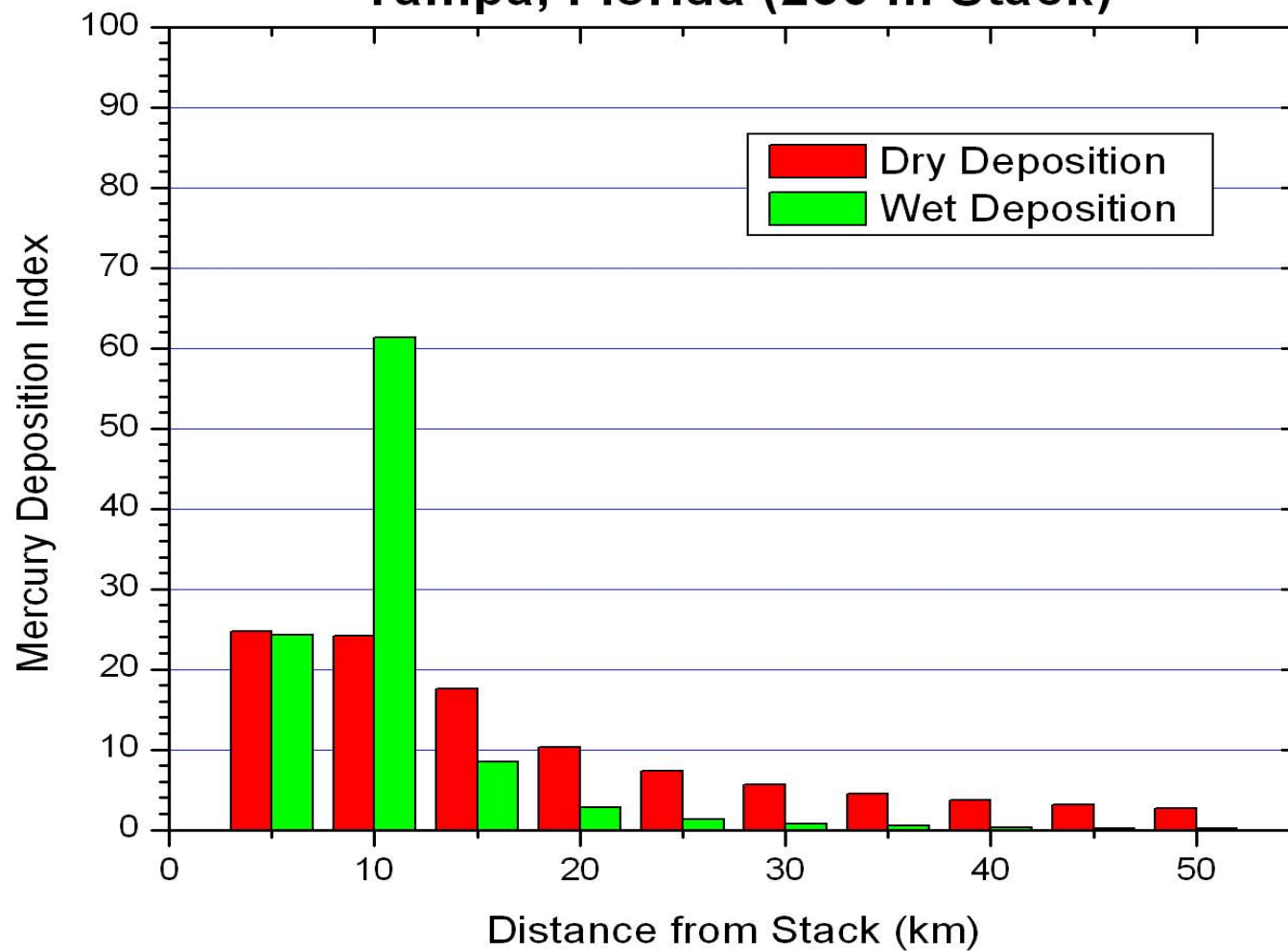


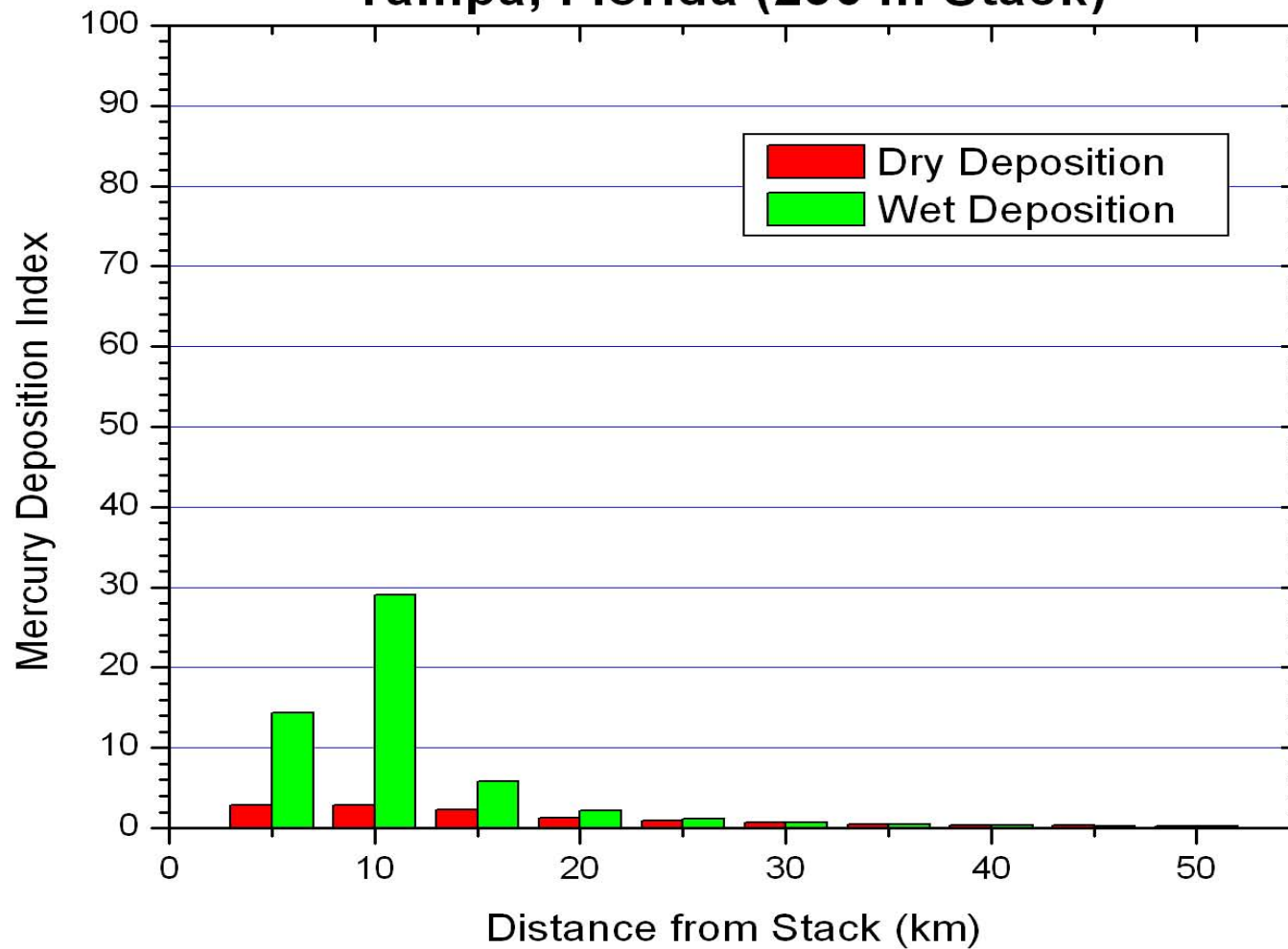
## APPENDIX A: ISC3 Graphics

## Annual Hg<sup>(++)</sup> Deposition - Incremental Tampa, Florida (250 m Stack)

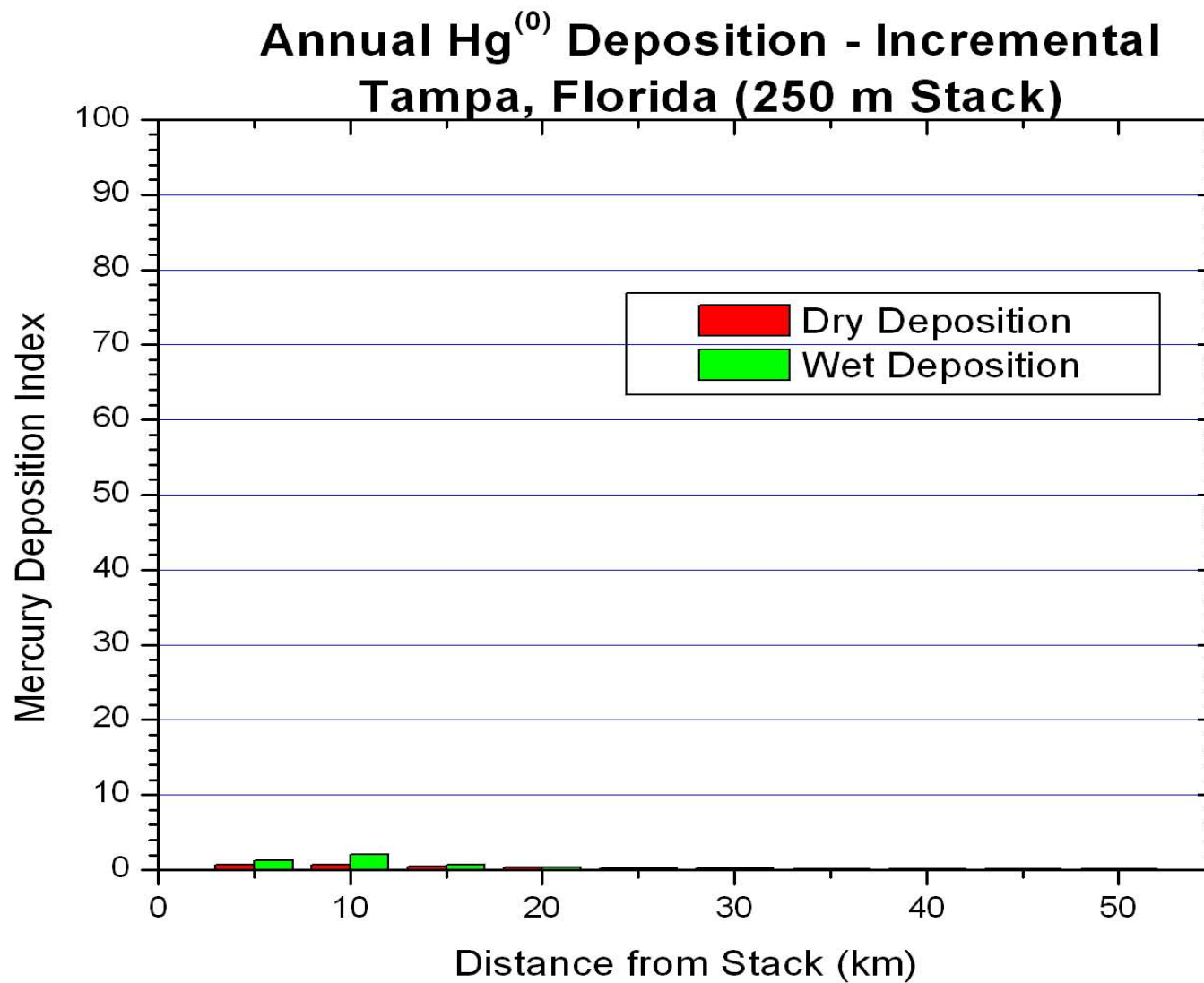


**Figure 1.** Annual Average Oxidized Hg Deposition for Tampa, Florida - 250 m stack height, 1990-1994 meteorology, emission rate of 1 kg/day.

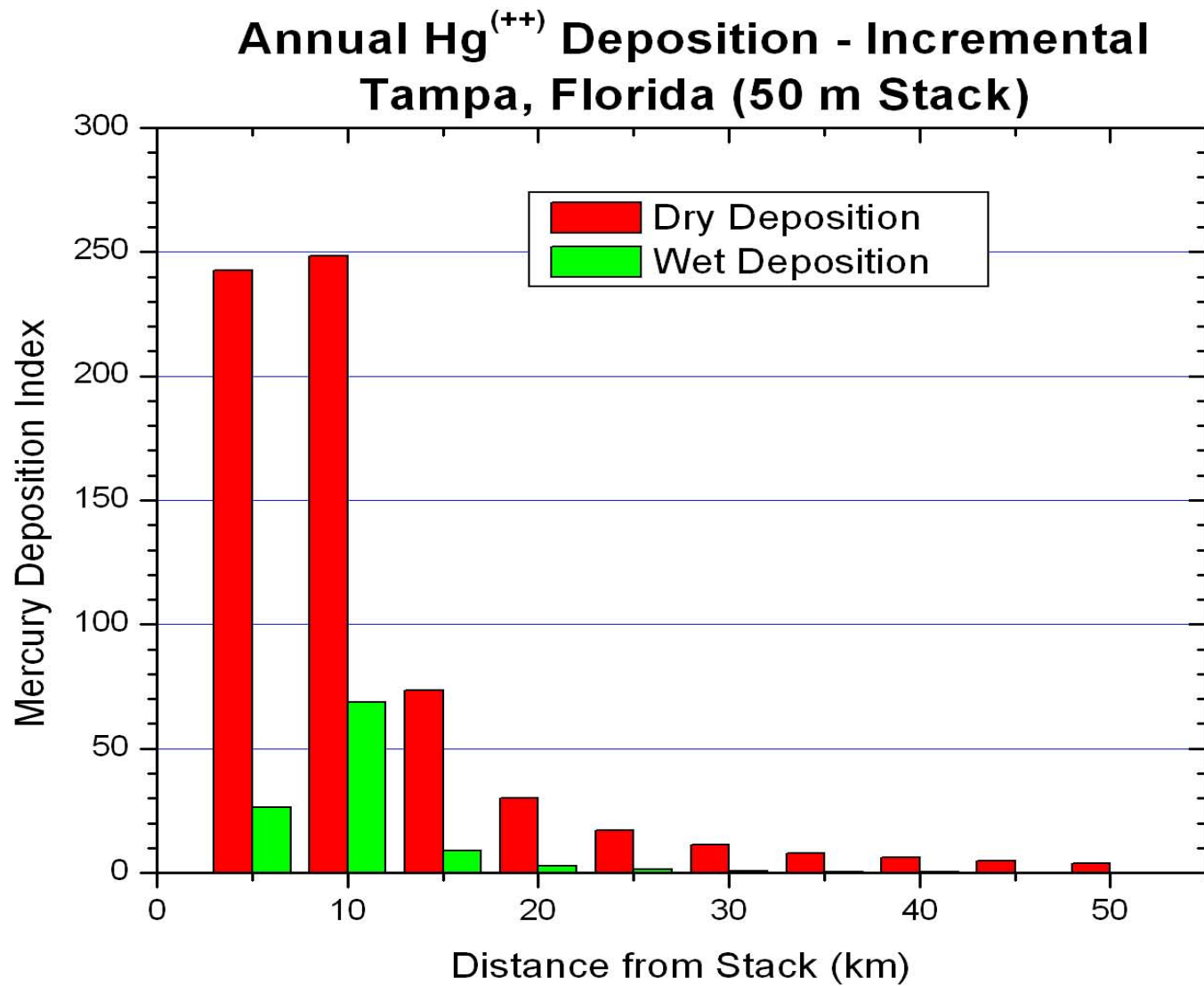
## Annual Hg<sup>(p)</sup> Deposition - Incremental Tampa, Florida (250 m Stack)



**Figure 2.** Annual Average Particulate Hg Deposition for Tampa, Florida - 250 m stack height, 1990-1994 meteorology, emission rate of 1 kg/day.

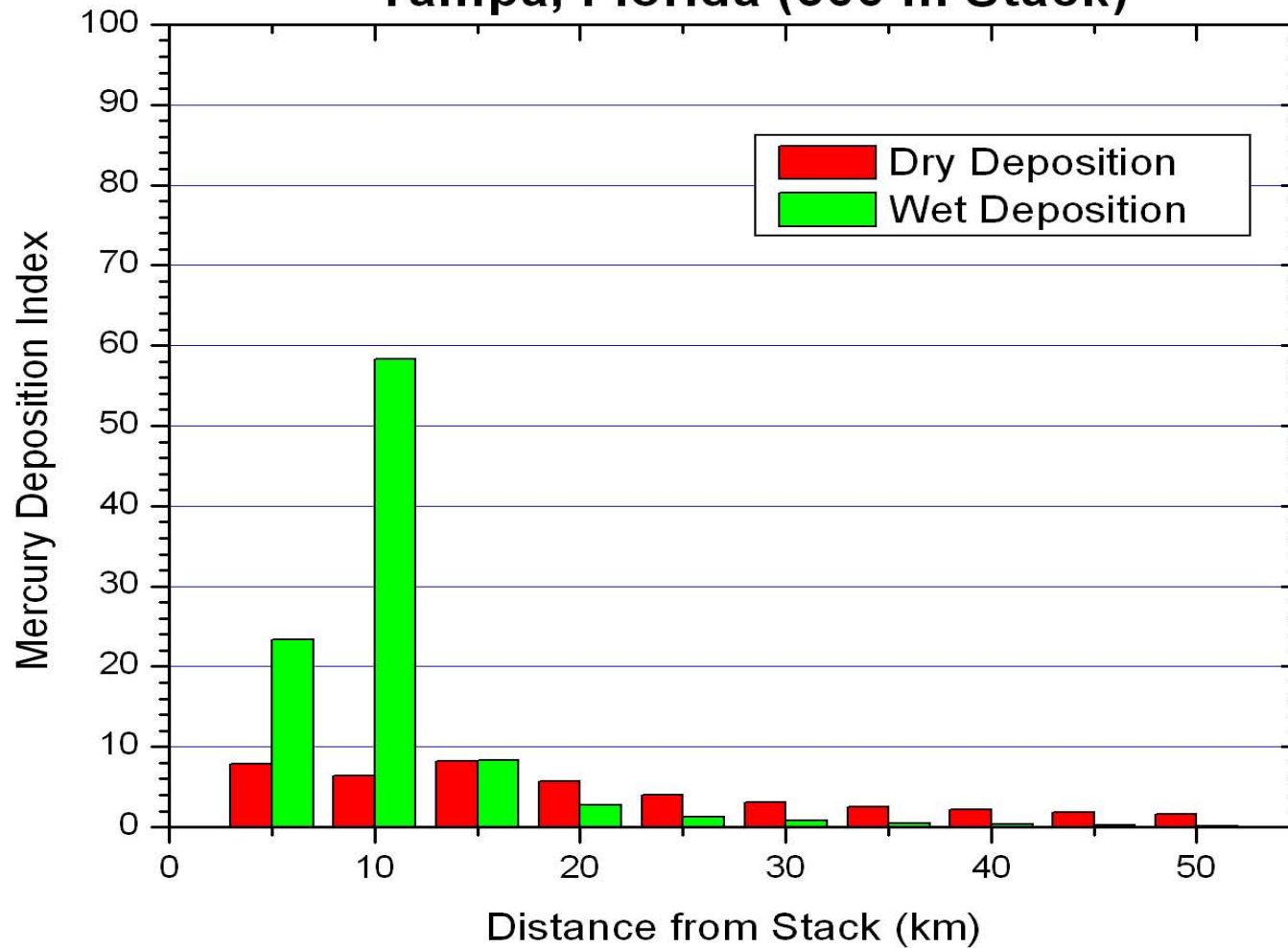


**Figure 3.** Annual Average Elemental Hg Deposition for Tampa, Florida - 250 m stack height, 1990-1994 meteorology, emission rate of 1 kg/day.

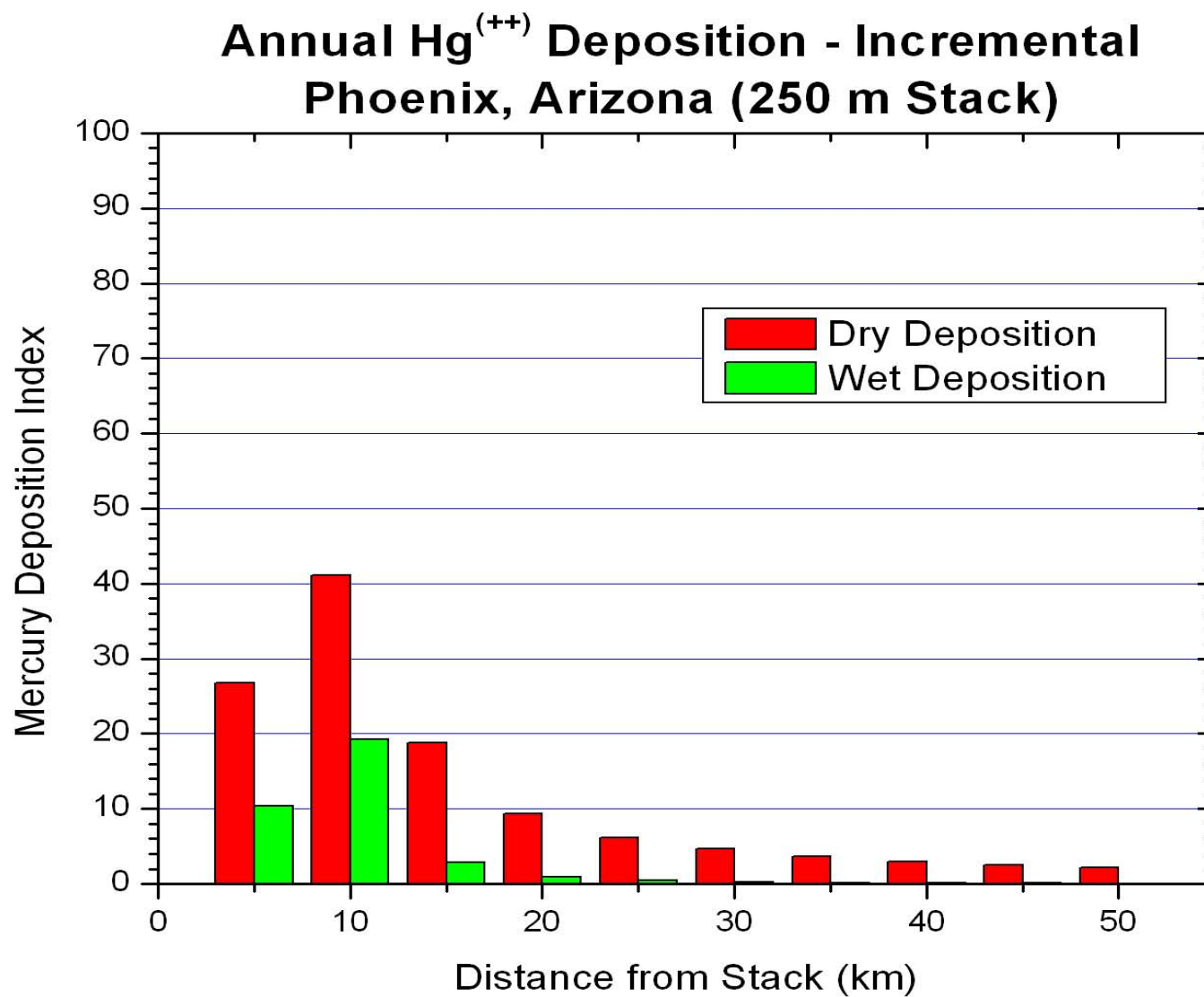


**Figure 4.** Annual Average Oxidized Hg Deposition for Tampa, Florida - 50 m stack height, 1990-1994 meteorology, emission rate of 1 kg/day.

## Annual Hg<sup>(++)</sup> Deposition - Incremental Tampa, Florida (500 m Stack)

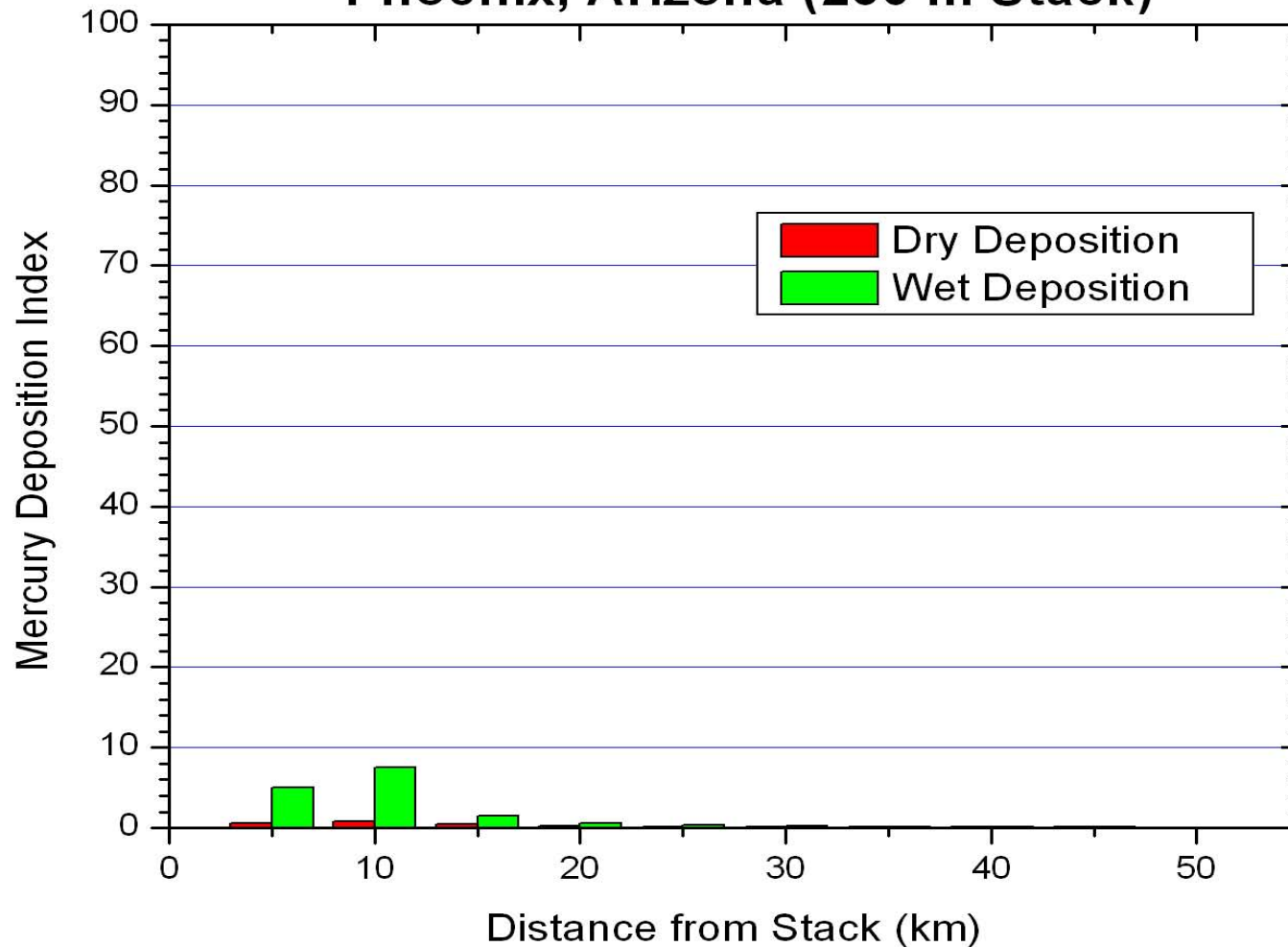


**Figure 5.** Annual Average Oxidized Hg Deposition for Tampa, Florida - 500 m stack height, 1990-1994 meteorology, emission rate of 1 kg/day.



**Figure 6.** Annual Average Oxidized Hg Deposition for Phoenix, Arizona - 250 m stack height, 1986-1990 meteorology, emission rate of 1 kg/day.

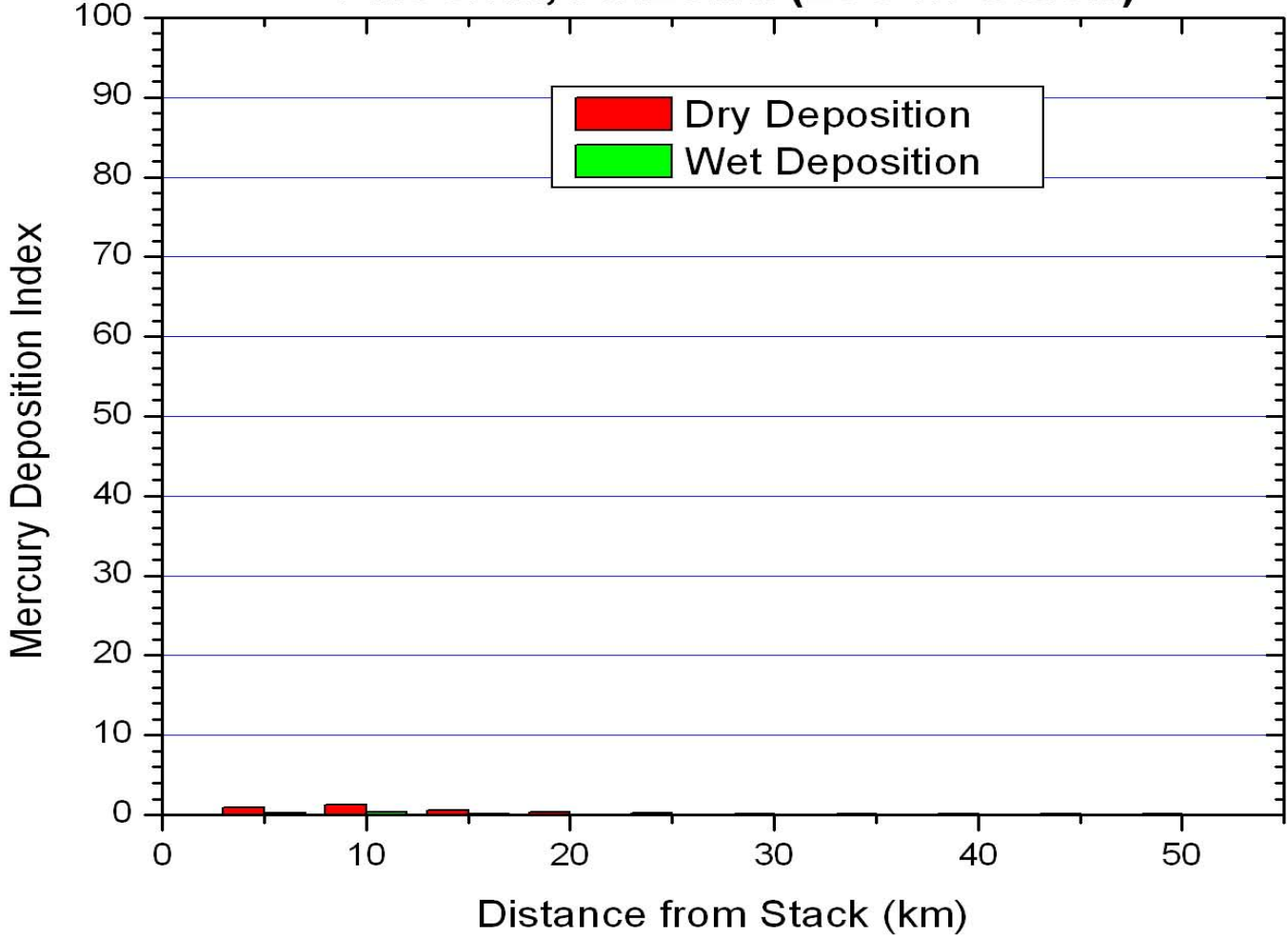
## Annual Hg<sup>(p)</sup> Deposition - Incremental Phoenix, Arizona (250 m Stack)



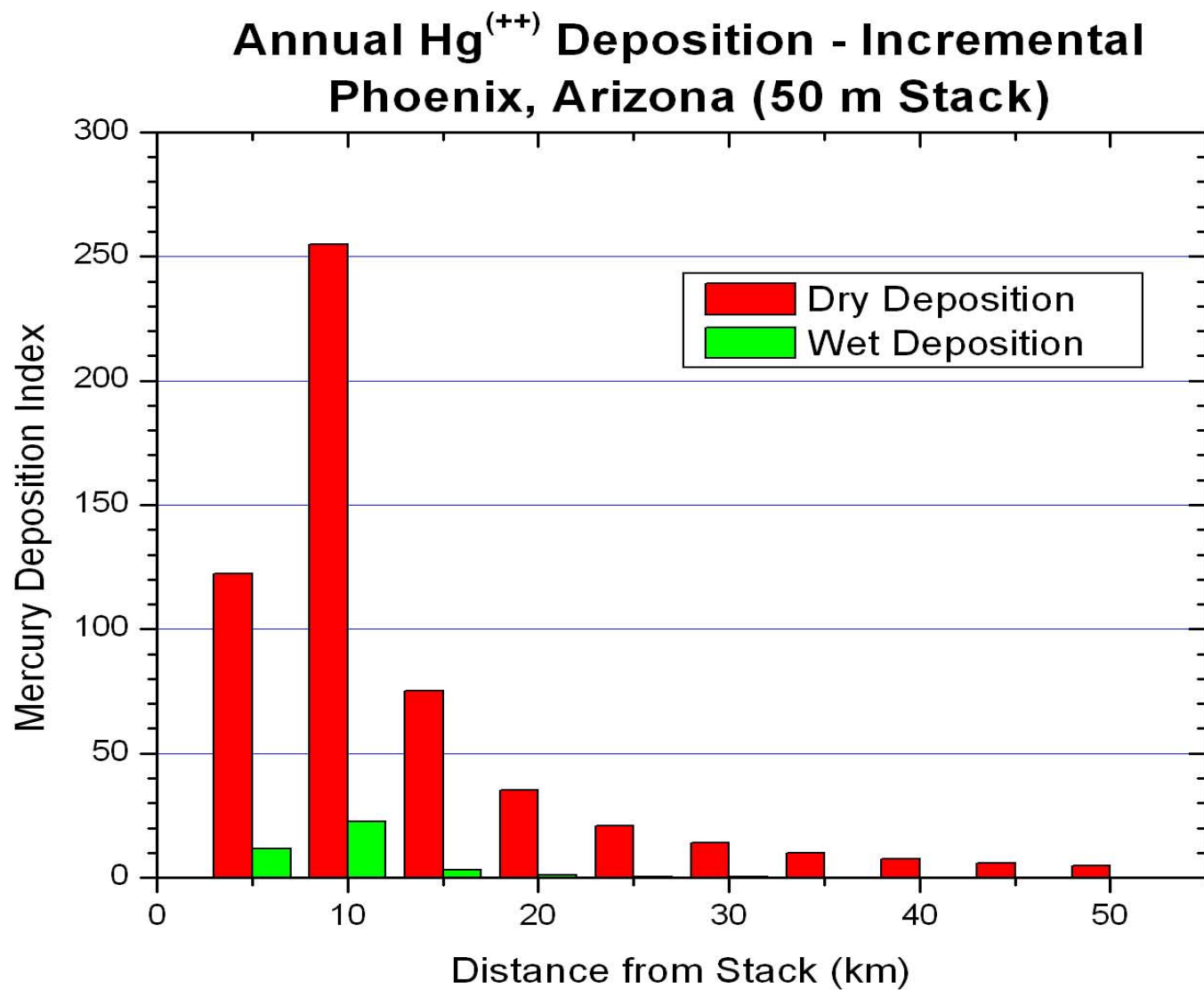
**Figure 7.** Annual Average Particulate Hg Deposition for Phoenix, Arizona - 250 m stack height, 1986-1990 meteorology, emission rate of 1 kg/day.



# Annual Hg<sup>(0)</sup> Deposition - Incremental Phoenix, Arizona (250 m Stack)

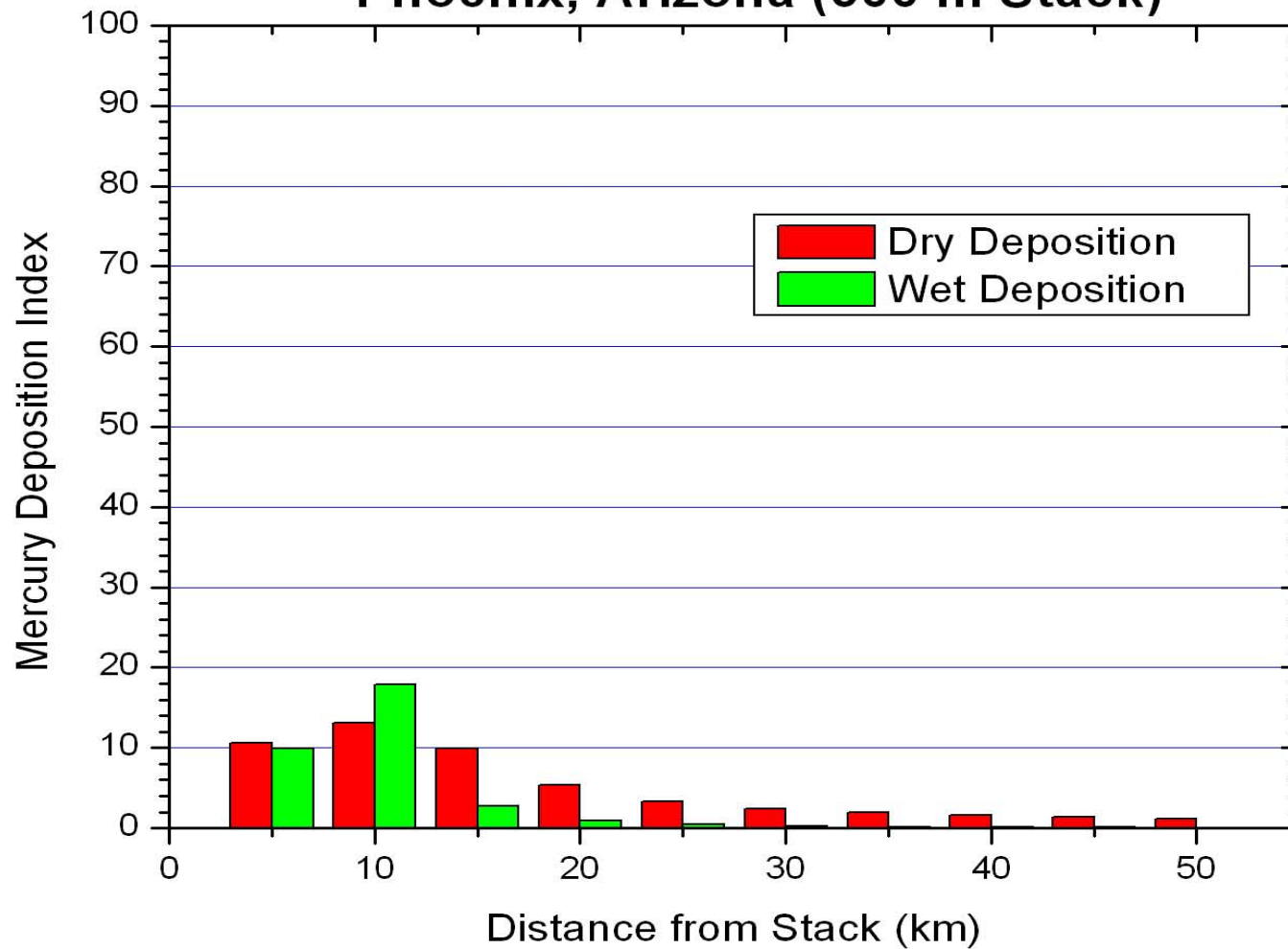


**Figure 8.** Annual Average Elemental Hg Deposition for Phoenix, Arizona - 250 m stack height, 1986-1990 meteorology, emission rate of 1 kg/day.

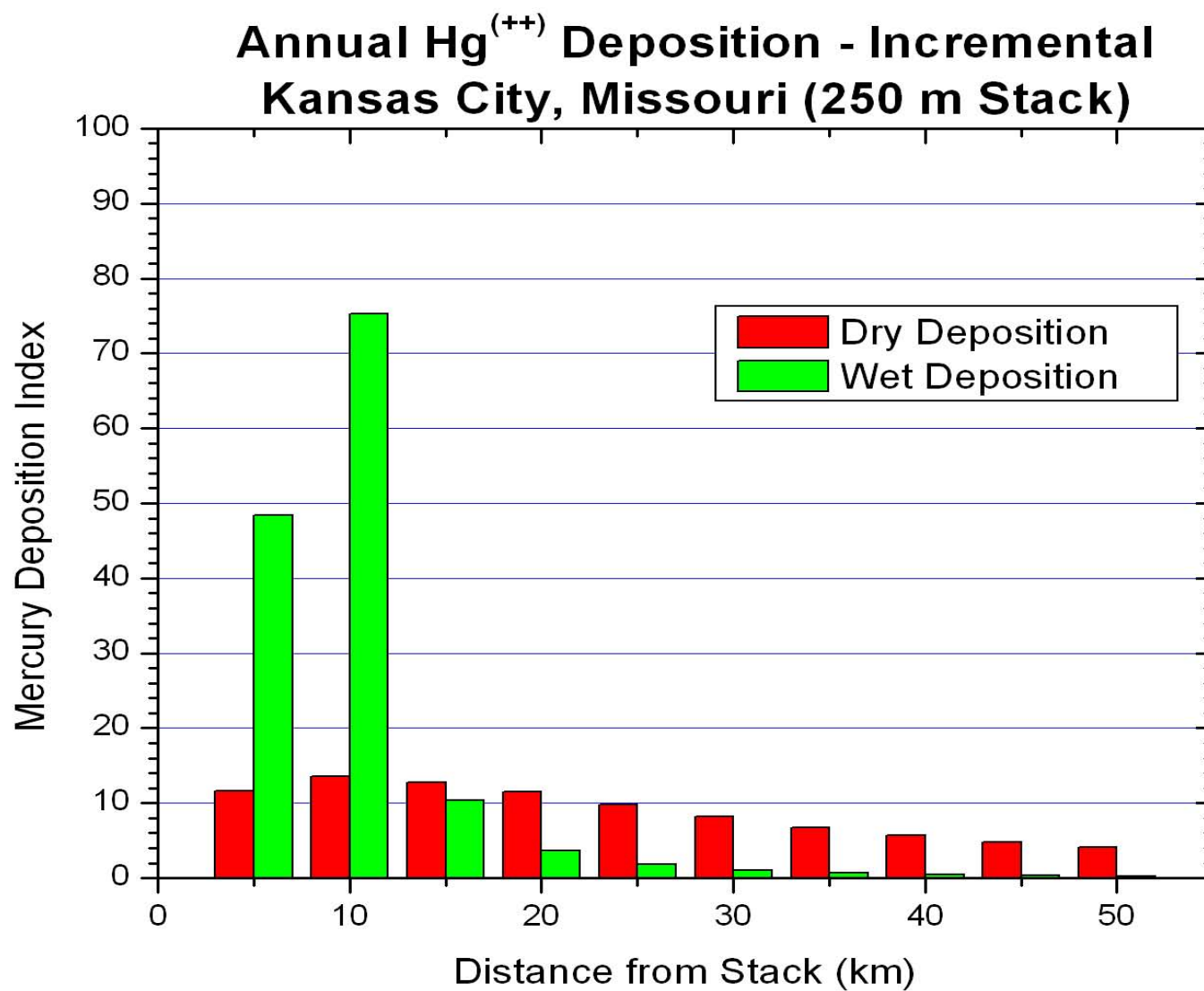


**Figure 9.** Annual Average Oxidized Hg Deposition for Phoenix, Arizona - 50 m stack height, 1986-1990 meteorology, emission rate of 1 kg/day.

## Annual Hg<sup>(++)</sup> Deposition - Incremental Phoenix, Arizona (500 m Stack)

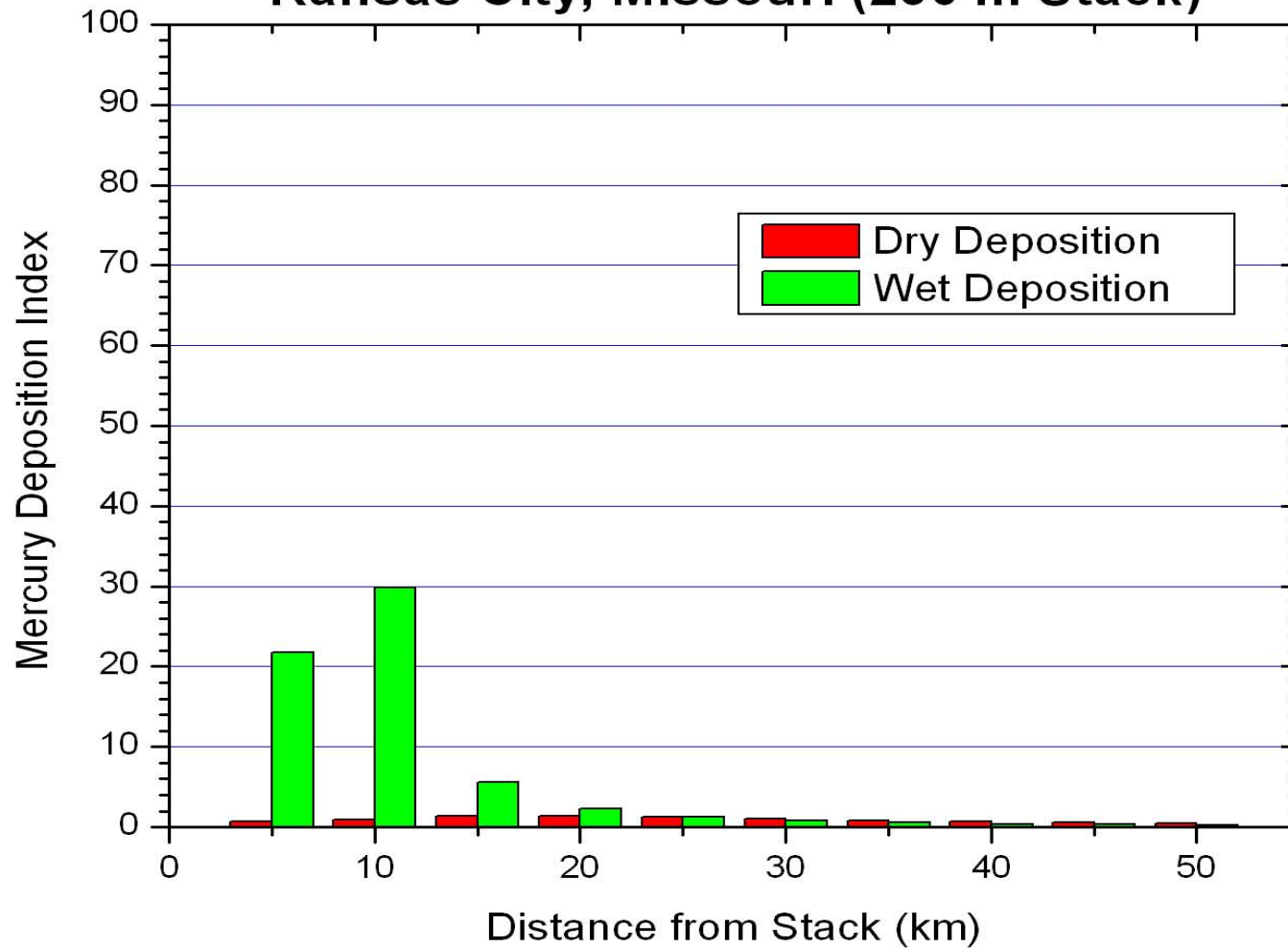


**Figure 10.** Annual Average Oxidized Hg Deposition for Phoenix, Arizona - 500 m stack height, 1986-1990 meteorology, emission rate of 1 kg/day.

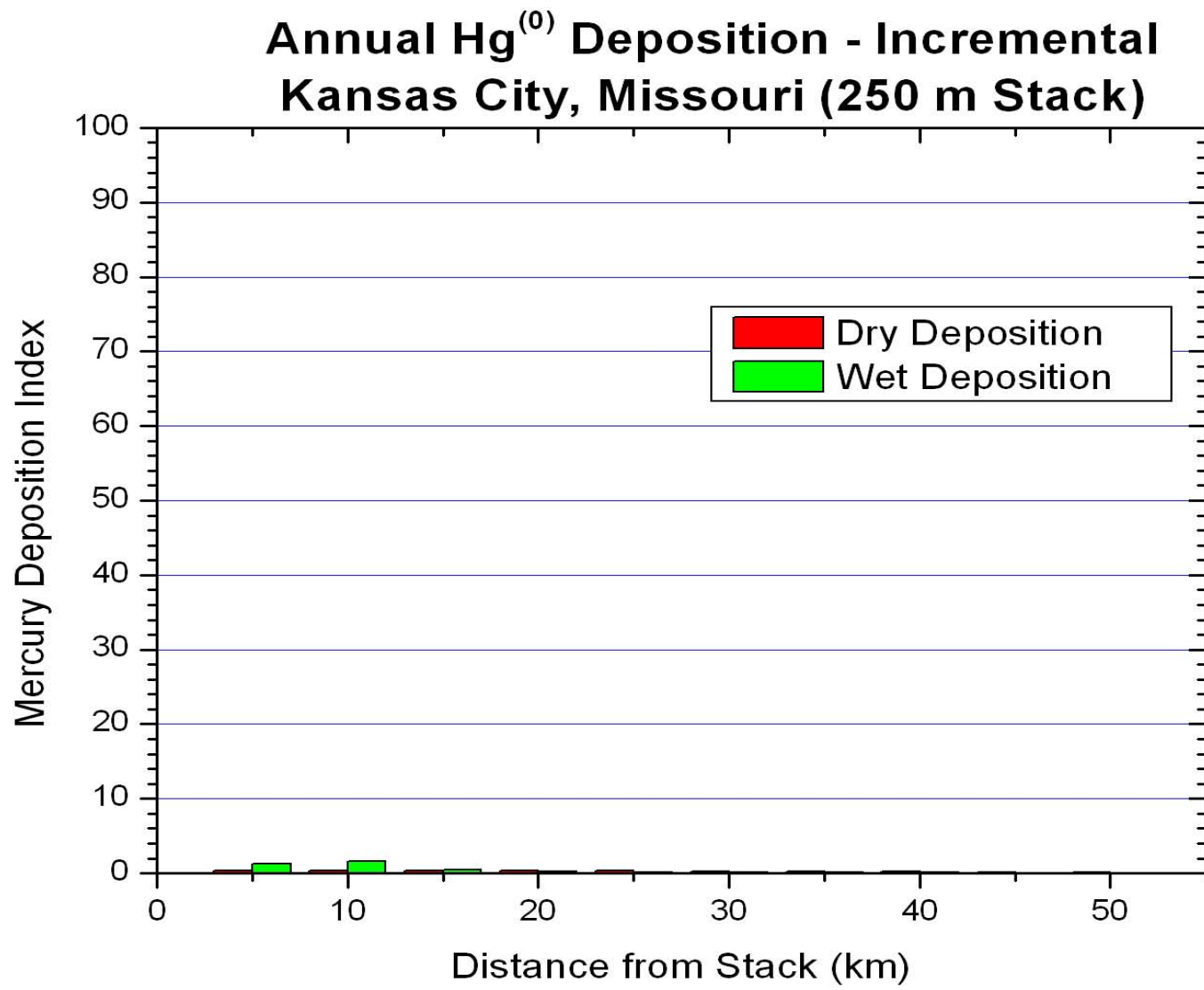


**Figure 11.** Annual Average Oxidized Hg Deposition for Kansas City, Missouri - 250 m stack height, 1990-1994 meteorology, emission rate of 1 kg/day.

## Annual Hg<sup>(p)</sup> Deposition - Incremental Kansas City, Missouri (250 m Stack)

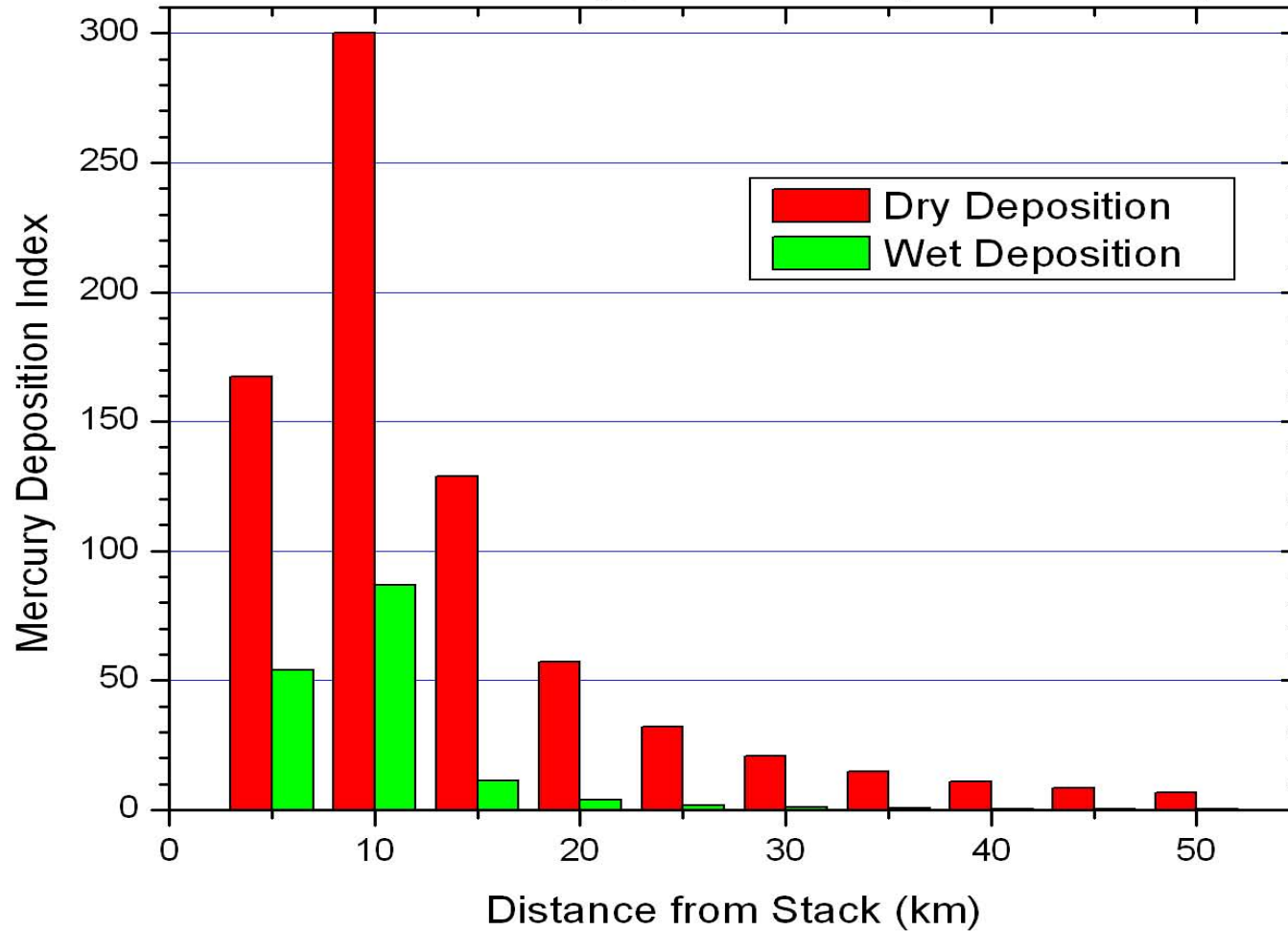


**Figure 12.** Annual Average Particulate Hg Deposition for Kansas City, Missouri - 250 m stack height, 1990-1994 meteorology, emission rate of 1 kg/day.

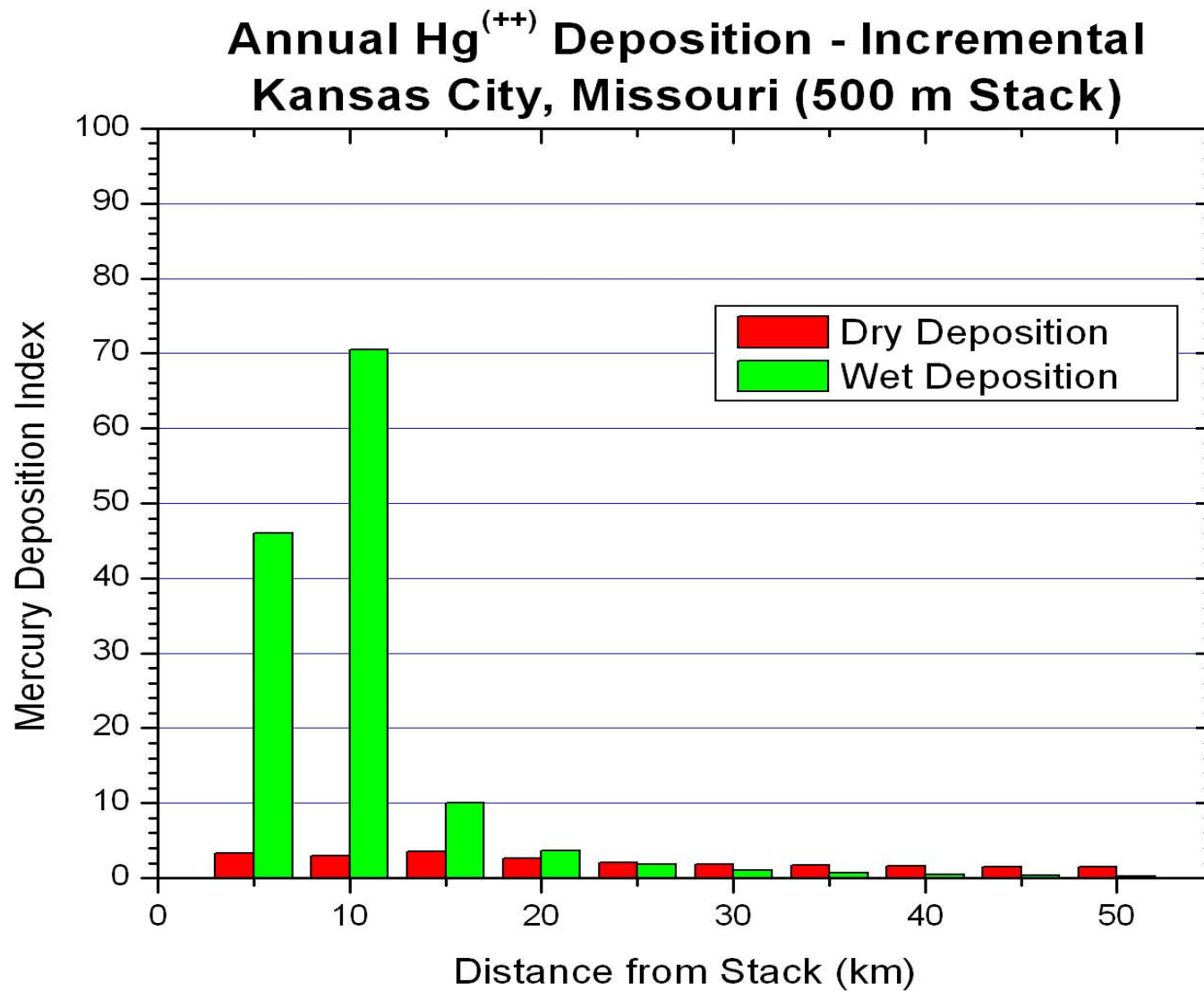


**Figure 13.** Annual Average Elemental Hg Deposition for Kansas City, Missouri - 250 m stack height, 1990-1994 meteorology, emission rate of 1 kg/day.

## Annual Hg<sup>(++)</sup> Deposition - Incremental Kansas City, Missouri (50 m Stack)

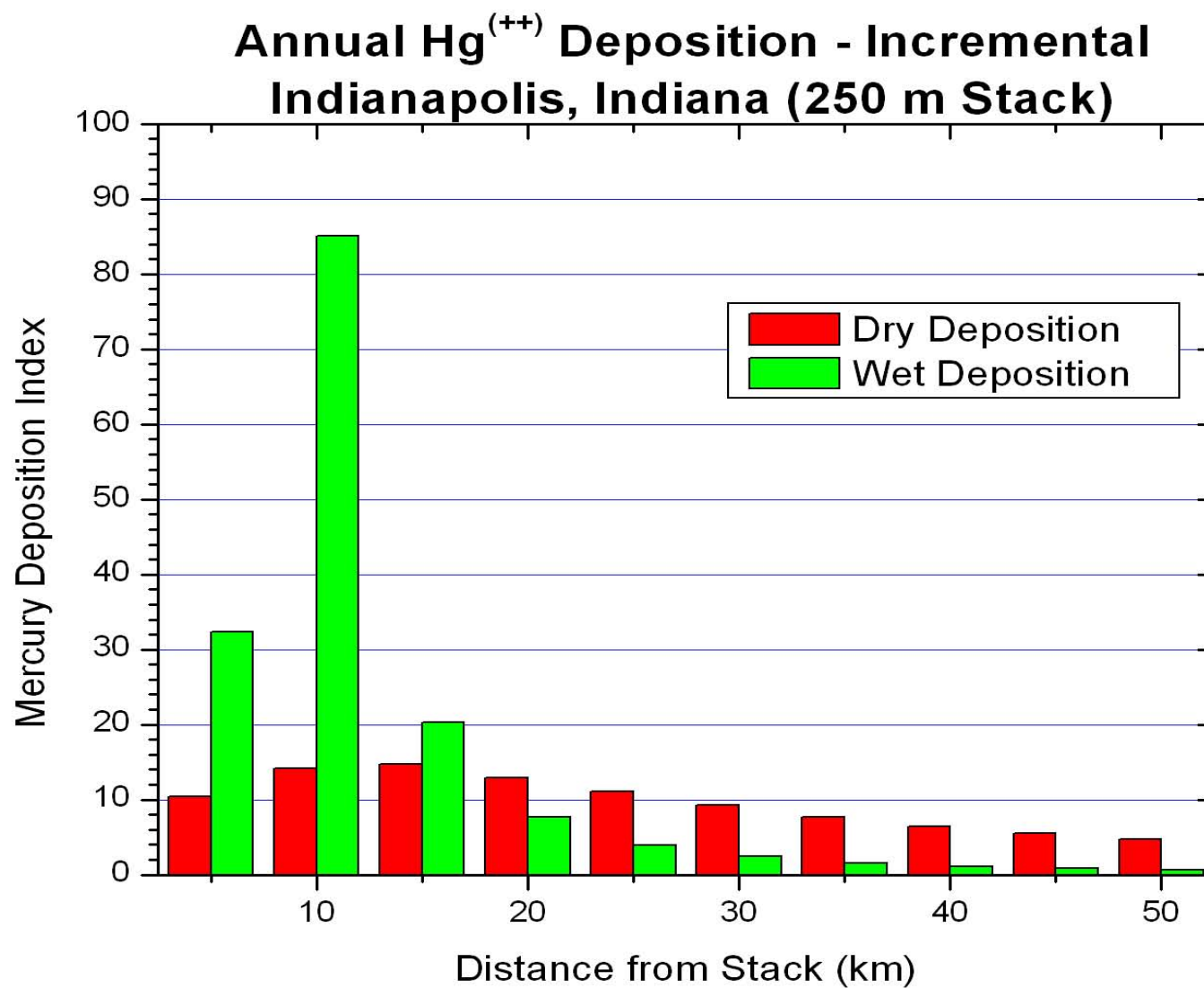


**Figure 14.** Annual Average Oxidized Hg Deposition for Kansas City, Missouri - 50 m stack height, 1990-1994 meteorology, emission rate of 1 kg/day.



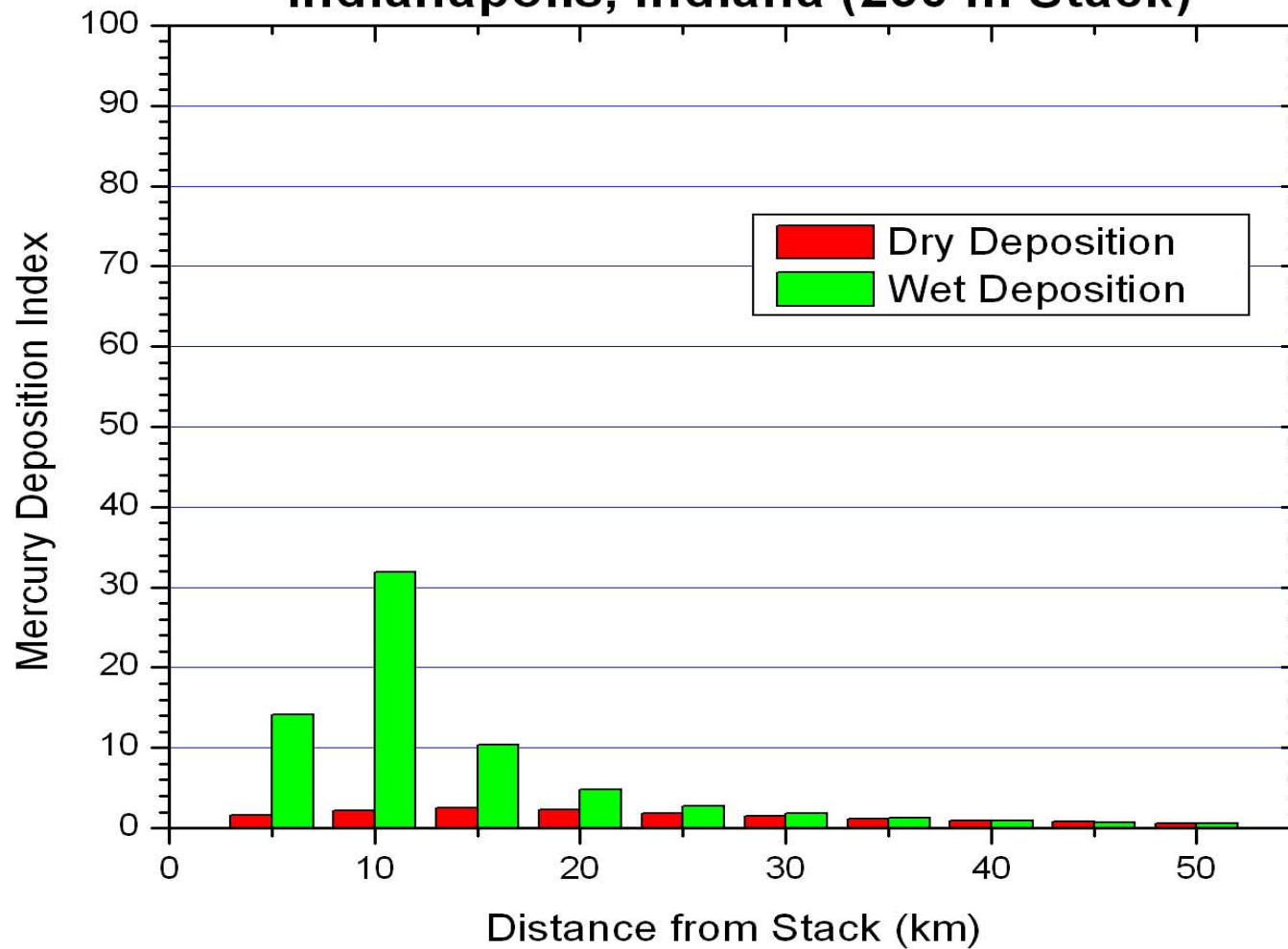
**Figure 15.** Annual Average Oxidized Hg Deposition for Kansas City, Missouri - 500 m stack height, 1990-1994 meteorology, emission rate of 1 kg/day.



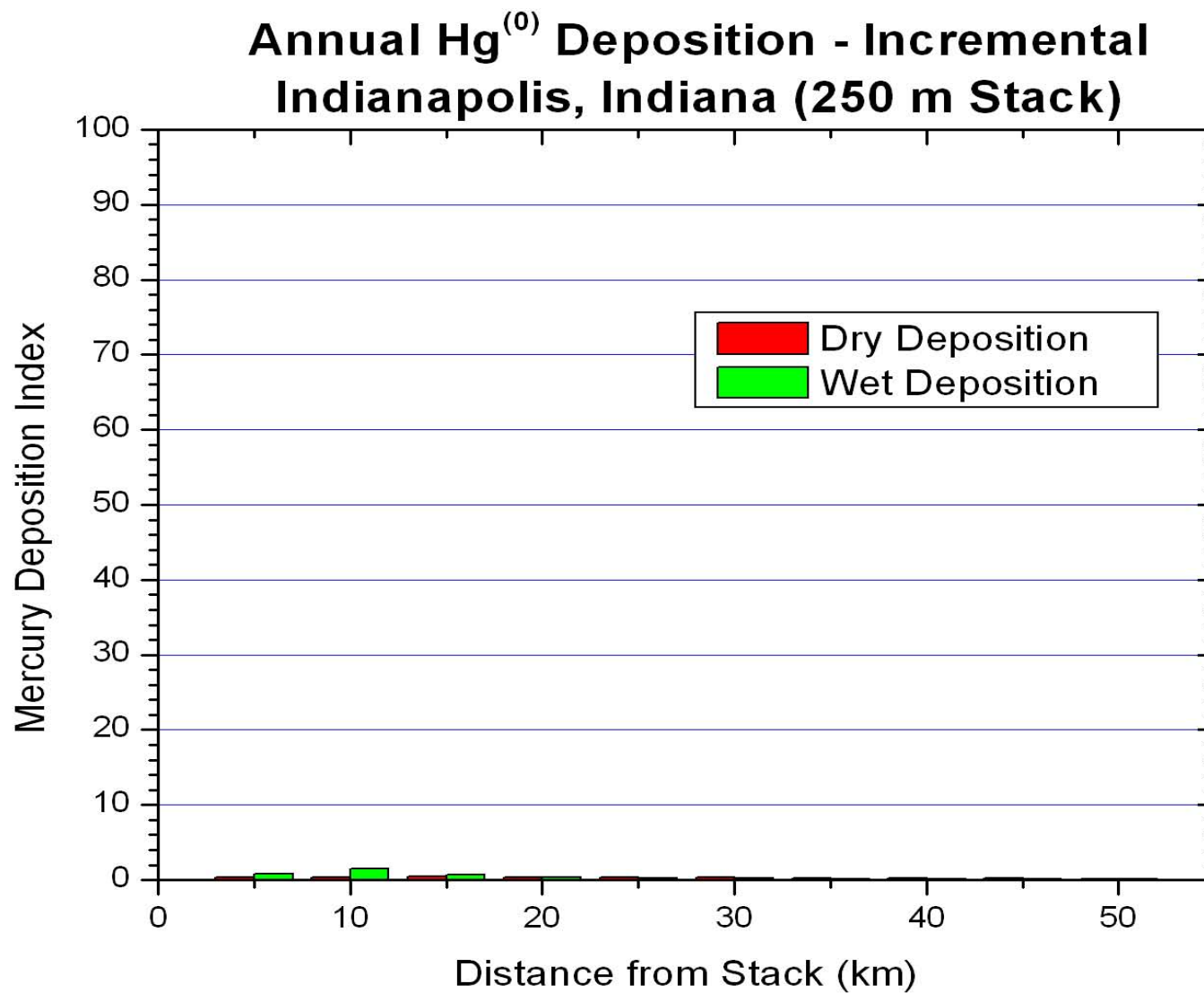


**Figure 16.** Annual Average Oxidized Hg Deposition for Indianapolis, Indiana - 250 m stack height, 1990-1994 meteorology, emission rate of 1 kg/day.

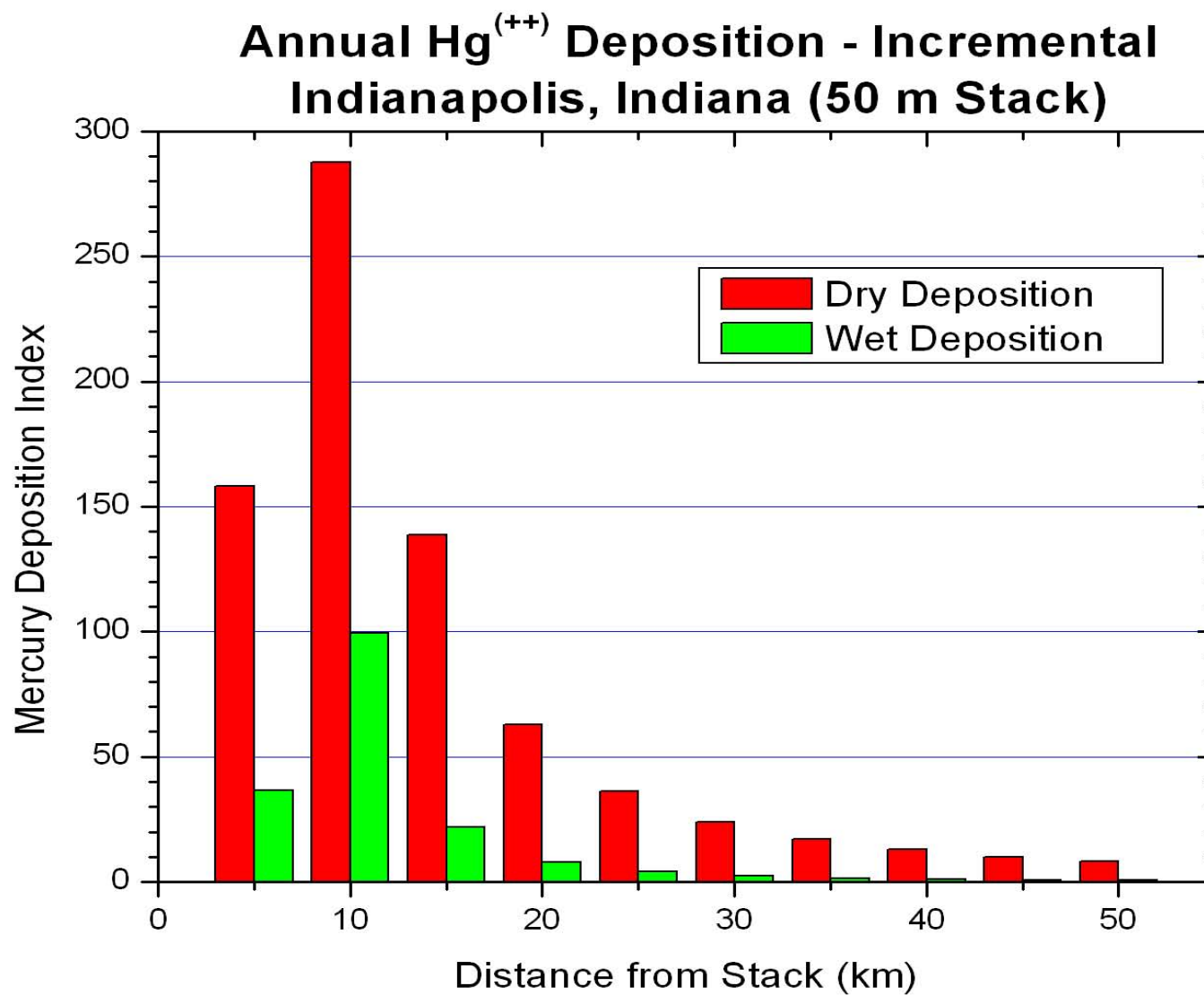
## Annual Hg<sup>(p)</sup> Deposition - Incremental Indianapolis, Indiana (250 m Stack)



**Figure 17.** Annual Average Particulate Hg Deposition for Indianapolis, Indiana - 250 m stack height, 1990-1994 meteorology, emission rate of 1 kg/day.

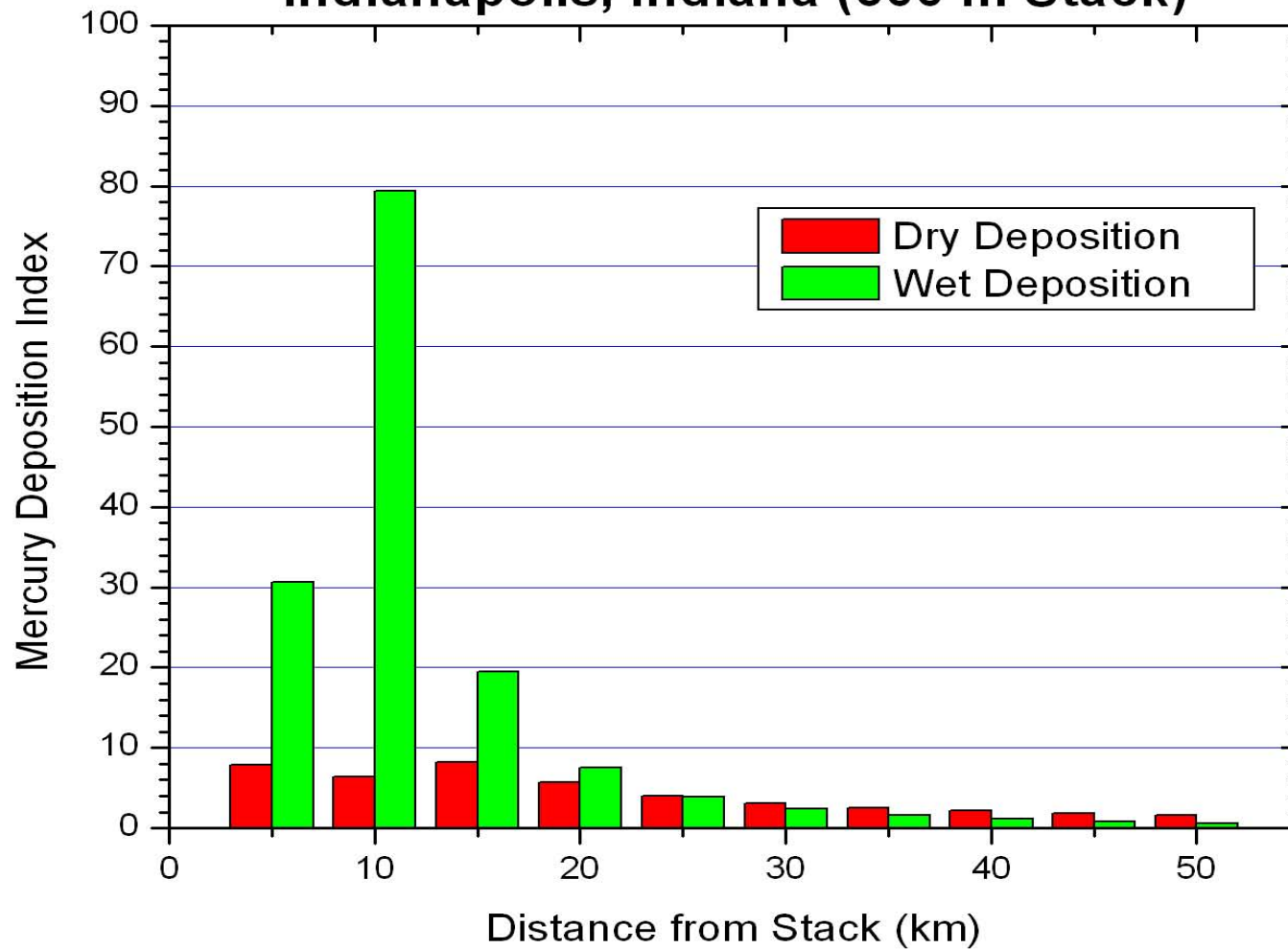


**Figure 18.** Annual Average Elemental Hg Deposition for Indianapolis, Indiana - 250 m stack height, 1990-1994 meteorology, emission rate of 1 kg/day.



**Figure 19.** Annual Average Oxidized Hg Deposition for Indianapolis, Indiana - 50 m stack height, 1990-1994 meteorology, emission rate of 1 kg/day.

## Annual Hg<sup>(++)</sup> Deposition - Incremental Indianapolis, Indiana (500 m Stack)



**Figure 20.** Annual Average Oxidized Hg Deposition for Indianapolis, Indiana - 500 m stack height, 1990-1994 meteorology, emission rate of 1 kg/day.

