



Rocky Mountain Research Station



Partner's Guide

May 2008

We at the Rocky Mountain Research Station believe in partnerships. We cannot accomplish our mission of creating and delivering scientific knowledge without you as a partner. Please feel free to contact us, to learn about the exciting things we are doing, and to join with us in applying science to natural resource problems. This directory is meant to more fully open our doors to you, whether you are a user of research, a staff member or administrator, a collaborator, or someone just interested in what research is being conducted in the Interior West where we operate. Our station's territory spans Forest Service Regions 1,2,3, and 4, more than half the land mass in the National Forest System. We are proud of our many partnerships with the National Forest System, State and Private Forestry, the Department of the Interior agencies, State Forestry Organizations, Universities, the Nature Conservancy, and others in this area, and we invite you to join us. This directory is a living document, as our organizations continually changes. We look forward to working with you and hopefully to serving in our role as a good partner and provider of top quality scientific information and tools for you.

Thanks and be safe...

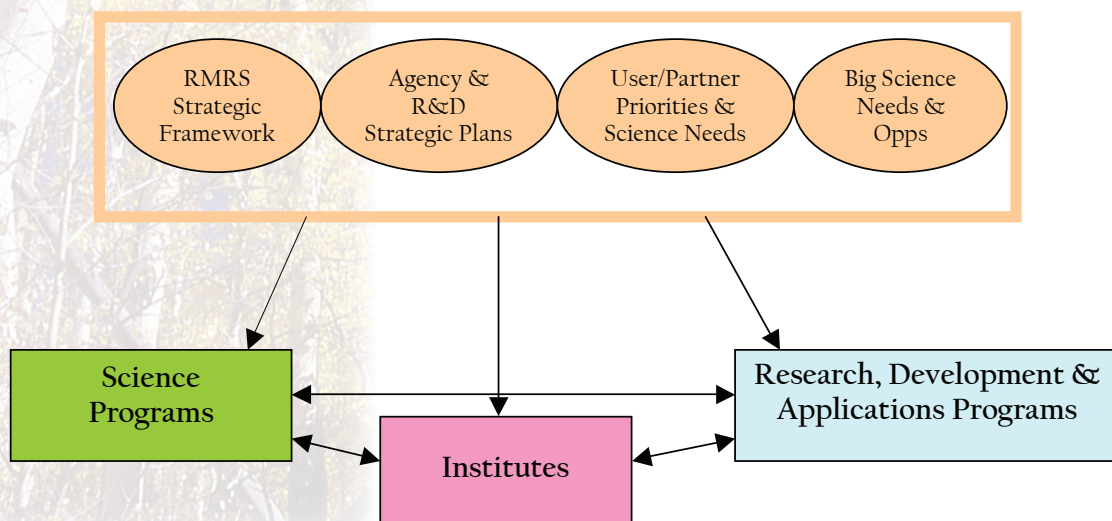
George S. Foster

Contents

Overview of the Rocky Mountain Research Station	1
Program Descriptions	3
Science Programs by Location	6
Research Work Units by Science Programs.....	7
Laboratory Addresses	8
Liaison Guide	9
Telephone Directory.....	11
Fun Facts.....	17
Maps.....	18

Headquartered in Fort Collins, CO, the USDA Forest Service Rocky Mountain Research Station (RMRS) maintains a forest and rangeland research and development program among 14 states of the Interior West. Research laboratories and experimental areas are maintained in eight states (AZ, CO, ID, MT, NV, NM, SD, and UT). We develop and deliver scientific and technological information and knowledge to improve the health and use of forests and rangelands.

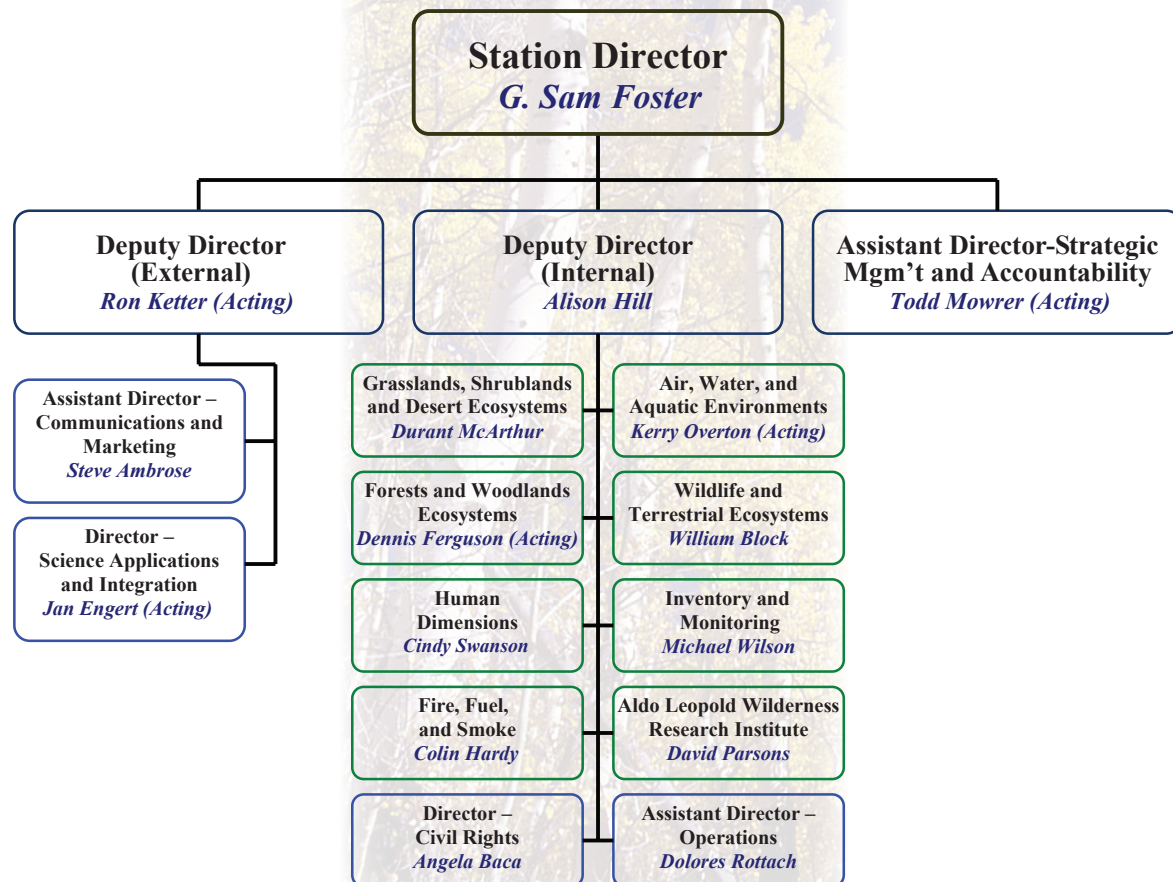
In 2006, RMRS began an organizational restructuring to better serve our clients and improve internal efficiency. The goal was to create a structure that will allow the Station to improve innovation, effectiveness (competitiveness), accountability, flexibility (resilience), efficiency, accessibility, and be centered on teams and their talents. This restructuring took the Station from 30 research work units (including ecosystem management units and national programs) to a virtual programmatic structure organized into Science Programs; Research, Development and Applications Programs; and an Institute.



The **External Deputy Area** is focused on building relationships with all partners external to the Station, particularly Congress, National Forest Systems, State and Private Forestry, state foresters and university deans and department heads. It is home to communications; science applications and integration, and research, development and applications programs. The communications program focuses on building awareness and marketing accomplishments and capabilities to Congress, the news media, our partners and stakeholders. Communications includes internal information exchange, publication production, media coordination, legislative affairs, the national library service, and conservation education programs. The science applications and integration program develops focused programs to build science findings into tools and technology; assists users in delivering and adopting these into land management practices; and manages relationships with planning and technical staffs in the National Forest System.

The **Internal Deputy Area** focuses on the science programs, civil rights, and business operations. The Science Programs are focused on long-term and short-term research, science innovation and discovery, tool development and delivery and program integration. Civil Rights provides leadership in developing and implementing programs and training that ensure the fair treatment of employees, assist with outreach and recruitment, facilitate alternative dispute resolution, and assist with addressing complaints. Business operations consists of acquisition management, budget and finance, facilities, and the remaining human resources and IRM liaisons. Together, these business operations units keep the Station functioning effectively, efficiently and legally.

Rocky Mountain Research Station Leadership Team Organization Chart



Descriptions of RMRS Science Programs and Institute

Grassland, Shrubland and Desert Ecosystems

This program addresses the biology, use, management, and restoration of grasslands, shrublands, shrub steppe, and pinyon-juniper woodlands that are important for the human well being and landscape health, biodiversity, productivity, watersheds, and sustainability. Scientists are cooperating with land managers to solve ecological problems, identify and develop native plants for restoration, control and managing invasive weeds, and improve wildlife habitats and rangelands. <http://www.fs.fed.us/rmrs/research/programs/grassland-shrubland-desert/>



Prescribed fire is being evaluated as a tool to help restore Great Basin ecosystems.

Forest and Woodland Ecosystems

This program provides the scientific knowledge basis for natural resource management activities to sustain and restore the health, biodiversity, productivity, and processes in these ecosystems. Studies address basic vegetation and soil ecology and related ecosystem biota and processes as the basis for understanding the function, composition, and structure of these complex ecosystems. The program develops vegetation and fuels management and restoration strategies; and quantitative tools to guide planning and treatment implementation. The program provides understanding of the complex interactions of management treatments and other ecosystem disturbance processes temporally and spatially. <http://www.fs.fed.us/rmrs/research/programs/forest-woodlands-ecosystem/>



Scientists are studying the effects of climate change on pine beetle populations.

Fire, Fuel, and Smoke

This program has a national charter to conduct fundamental and applied research relating to wildland fire processes, terrestrial and atmospheric effects of fire, and ecological adaptations to fire. In addition, the Program develops associated knowledge tools and applications for both scientists and managers. The scope of work addresses four temporal stages of a fire-environment continuum, including precursors to fire, combustion and fire behavior processes, immediate (first-order) fire effects, and longer-term (second-order) fire effects. The Program is organized within six focus areas: 1. physical fire dynamics; 2. fuel dynamics; 3. smoke emissions and dispersion; 4. fire ecology; 5. fire and fuel management strategies; and 6. science synthesis and delivery. <http://www.fs.fed.us/rmrs/research/programs/fire-fuels-smoke/>



Experiments at the Fire Sciences Laboratory evaluate extreme wildland fire behavior.

Air, Water and Aquatic Environments

This program supports the integrated management of ecosystems to understand of the effects of natural processes and human activities on our air, water and aquatic resources in the Interior West. The program's research is organized around the following components: ecosystem processes, air and fire interactions, climate change variability, extreme events, and tool development. The program is committed to the development of knowledge and science applications related to air and water quality, as well as the habitat quality, distribution, diversity, and persistence of fish and other aquatic species. <http://www.fs.fed.us/rmrs/research/programs/air-water-aquatics/>



Fish sampling in Southwestern streams has helped produce a comprehensive record of the status of native and non-native fish populations. Results are used to help reestablish fish habitat following disturbance.

Wildlife and Terrestrial Ecosystems

This program focuses on four components. First, sustaining species/ecosystems of concern includes multi-scale studies to identify factors that affect the persistence of species, communities, and ecosystems of concern. Second, understand public use affects looks at the interactions between people and fish/wildlife. Managing for terrestrial and aquatic habitats looks at questions about the amount, kind, distribution, and connectivity of habitat critical to the persistence and abundance of these species. The fourth area of focus, evaluating outcomes of land/water uses and natural disturbances, looks at threats to habitats and determines immediate, long-term, and cumulative effects of disturbances on species of concern and interest in the Intermountain West. <http://www.fs.fed.us/rmrs/research/programs/wildlife-terrestrial-habitats/>



Scientists are studying wolverines and the impacts on their habitats from winter recreationists.

Inventory and Monitoring

This program provides the data, analyses, and tools needed to identify the current status and evaluate trends in the condition of forests and rangelands throughout the Interior West. The information and methods provided by the Program will assist in identifying changes in use, management options and impacts, and threats and impacts of climate change, fire, insects, disease, and other natural processes. The Forest Inventory and Analysis Program is a central component of this Science Program. <http://www.fs.fed.us/rmrs/research/programs/inventory-monitoring-analysis/>



Field inventories help understand the extent, condition, and health of forest lands in the Interior West.

Human Dimensions

This program provides social and economic science-based innovation to human societies as they develop a sustainable relationship with their environment. Major issues confronting societies across the globe such as global climate change, energy, fire, water, and ecosystem services, all have important social-economic dimensions that will be explored and addressed by this program. The national RPA scientists are in this program. Expertise residing in the program includes market and non-market economics; collaborative planning and community involvement; decision science and operations research; and risk management and organizational development. <http://www.fs.fed.us/rmrs/research/programs/social-economics-decision/>



Studies are underway to help determine what the public's attitudes are toward wildfire and fire management activities.

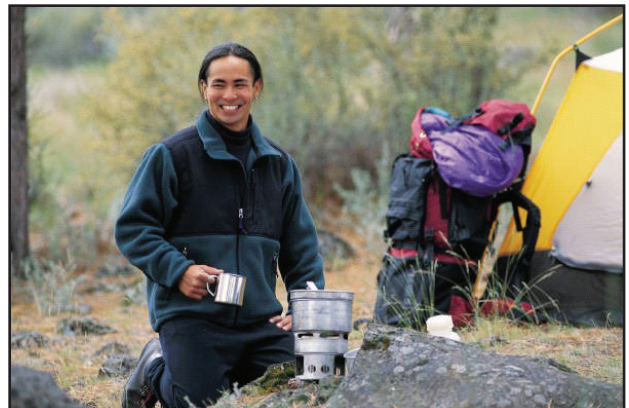
Aldo Leopold Wilderness Research Institute

In this program, scientists and research application specialists work on wilderness law, policy, and management to help assure that the science necessary for the understanding and stewardship of wild ecosystems is developed, delivered and applied to those responsible for managing such lands. ALWRI functions as an interagency research program (support is provided by the FS, BLM, FWS, NPS and USGS) that focuses on the following five problem areas: 1. recreation impacts and management; 2. relationships between people and public lands; 3. wilderness fire stewardship and management, including wildland fire use; 4. wilderness in the context of larger ecological and social systems (this includes issues related to wildlife, water, and invasive species that do not recognize administrative boundaries); and, 5. science delivery and application. <http://www.fs.fed.us/rmrs/research/programs/aldo-leopold/>



Scientists are evaluating several wetlands to restore heavily-used campsites in wilderness areas.

For more information on the RMRS Science Programs, please visit our website at <http://www.fs.fed.us/rmrs/>



RMRS Science Programs by Location

	Albuquerque, NM	Boise, ID	Bozeman, MT	Flagstaff, AZ	Fort Collins, CO	Logan, UT	Missoula, MT	Moscow, ID	Ogden, UT	Provo, UT	Rapid City, SD	Reno, NV
AWA	Toxic Algae (Aquatics)	Fish & Water: (Aquatics)		Water & Soils (Watershed)	Atmospheric Deposition (Air) Snowmelt Water Yield (Watershed)		Aquatic Conservation (TES Species)	Soil & Water Erosion (Engineering)				
ALWRI							Wilderness (Recreation, Values, Fire, Monitoring)					
FFS					Atmospheric modeling, Fire weather forecasting		Physical fire dynamics, fuel dynamics, smoke emissions, fire ecology, fuel management					
FWVE				Pathology, woodlands, invasive plants	White pine blister rust, forest ecosystem processes, invasive plants	Bark beetles, aspen	Riparian ecology, white bark pine, invasive plants	Silviculture, W/PB rust, remote sensing, forest growth modeling, soil, genetics				
GSD	Desert Grasslands, Riparian Corridors, Rural Viability	Native Plant Development	Invasive Plant Biocontrol							Chenopgrass Control, Shrub & Forb Restoration	Great Plains Grasslands & Wildlife, Invasive Plants	Great Basin Woodlands & Watersheds, Paleocology
HD					RPA, climate change, non-market & social values		Fire management decision tools, market values					
IM	Inventory (Statistics)				Inventory (Geography)				Inventory (EIA)			
WTE		Fire/fuels (birds)	Fire/Fuels/ Restoration (birds); Riparian (woodpecker)	Fire/Fuels/ Restoration (birds); human/wildlife interactions (birds)	Forest management (goshawks)		Furbearer ecology, wildlife genetics; landscape dynamics; climate change; invasive systems					

RMRS Research Work Units to Science Programs and Institute (General)*

RWU	Name	Location	GSD	FWE	AWA	WTE	HD	FFS	IM	ALWRI
4151	Sutherland	Missoula		X						
4155	Ferguson	Moscow		X						
4156	Edminster	Flagstaff		X						
4201	Ruggiero	Missoula				X				
4251	Block	Flagstaff				X				
4252	Tausch	Reno	X							
4253	McArthur	Provo	X							
4254	Butler	Rapid City	X							
4301	Bartos	Logan		X						
4302	Neary	Flagstaff			X					
4351	Finch	Albuquerque	X							
4352	Elder	Fort Collins			X					
4353	Overton	Boise			X					
4401	Hardy	Missoula						X		
4403	Reinhardt	Missoula						X		
4404	Hao	Missoula						X		
4451	Joyce	Fort Collins		X			X			
4501	Bentz	Logan		X						
4552	Dumroese	Moscow		X						
4651	Edminster	Flagstaff		X						
4652	Finch	Albuquerque	X							
4654	Jones	Missoula	X							
4655	Chambers	Reno	X							
4702	Elliott	Moscow			X					
4801	Wilson	Ogden							X	
4802	Jones	Missoula					X			
4851	Brown	Fort Collins					X			
4852	Kent	Fort Collins		X			X			
4901	Parsons	Missoula								X

*Not all RWU positions migrated exactly into one Science Program

RMRS Lab Addresses

Rocky Mountain Research Station
Natural Resources Research Center
2150 Centre Avenue, Building A
Fort Collins, CO 80526-1891

Forestry Sciences Laboratory
333 Broadway, SE – Suite 115
Albuquerque, NM 87102-3497

Aquatic Sciences Laboratory
322 E. Front Street, Suite 401
Boise, ID 83702

Forestry Sciences Laboratory
1648 South 7th Avenue, MSU Campus
Bozeman, MT 59717-2780

Southwest Forest Science Complex
2500 South Pine Knoll
Flagstaff, AZ 86001-6381

Forestry Sciences Lab / Service Center
240 West Prospect Road
Fort Collins, CO 80526-2098

Forestry Sciences Laboratory
860 North 1200 East
Logan, UT 84321

Aldo Leopold Wilderness Research Institute
790 East Beckwith Avenue
Missoula, MT 59801

Fire Sciences Laboratory
5775 Highway 10 West
Missoula, MT 59808

Forestry Sciences Laboratory
800 East Beckwith Avenue
Missoula, MT 59801

Forestry Sciences Laboratory
1221 South Main Street
Moscow, ID 83843

Ogden Service Center
324 - 25th Street, 2nd Floor
Ogden, UT 84401-2394

Forestry Sciences Laboratory
507 - 25th Street
Ogden, UT 84401-2394

Shrub Sciences Laboratory
735 North 500 East
Provo, UT 84606-1856

Forestry Sciences Laboratory
1730 Samco Road
Rapid City, SD 57702

Forestry Sciences Laboratory
University of Nevada, Reno
920 Valley Road
Reno, NV 89512



**ROCKY MOUNTAIN RESEARCH STATION
Program/Liaison/Coordinator Assignments**

Acronyms--SD: Station Director; DD: Deputy Director; ASD: Assistant Station Director; PM: Program Manager; SMA: Strategic Management and Accountability; Ops: Operations; Comm: Communications; CE: Conservation Education; CR: Civil Rights; A&I: Applications and Integration

Issue/Topic/Group/Program	Primary Contact	Secondary Contact
Air, Water and Aquatic Environments (AWA)	Kerry Overton, Acting Program Manager: 208-373-4357	
Aldo Leopold Wilderness Research Institute (ALWRI)	David Parsons, Program Manager: 406-542-4193	
Fire, Fuel and Smoke (FFS)	Colin Hardy, Program Manager: 406-329-4978	
Forest and Woodland Ecosystems (FWE)	Dennis Ferguson, Acting Program Manager: 208-883-2351	
Grassland, Shrubland and Desert Ecosystems (GSD)	Durant McArthur, Program Manager: 801-356-5112	
Human Dimensions (HD)	Cindy Swanson, Program Manager: 406-542-4172	
Inventory and Monitoring (IM)	Michael Wilson, Program Manager: 801-625-5407	Renee O' Brien: 801-625-5371
LandFire	Kevin Ryan, Program Manager: 406-329-4807	Jan Engert, Acting Director A&I
Wildland Fire Management (WFM) Research, Development & Applications Unit	Tom Zimmerman, Program Manager: 505-842-3350	Jan Engert, Acting Director A&I
Wildlife and Terrestrial Ecosystems (WTE)	Bill Block, Program Manager: 928-556-2161	Len Ruggiero: 406-542-4160
AMC	Dolores Rottach, ASD Ops: 970-498-1325	
Agenda 2020	Ron Ketter, Acting DD: 970-295-5917	Dennis Ferguson, Acting FWE PM: 208-883-2351
Agriculture Experiment Station Directors (AESD)	Sam Foster, SD: 970-295-5925	Ron Ketter, Acting DD: 970-295-5917
Audits	Dolores Rottach, ASD Ops: 970-498-1325	Todd Mowrer, Acting ASD SMA: 970-295-5960
Department of Interior Liaison	Sam Foster, SD: 970-295-5925	Ron Ketter, Acting DD: 970-295-5917
Biomass/Bioenergy	Dennis Ferguson, Acting FWE PM: 208-883-2351	
Budget Execution	Alison Hill, DD: 970-295-5942	Dolores Rottach, ASD Ops: 970-498-1325
Budget Formulation	Todd Mowrer, Acting ASD SMA: 970-295-5960	Alison Hill, DD: 970-295-5942
Center for Environmental Management of Military Lands (CEMML)		
1700 - Civil Rights/ADR	Angela Baca, Director CR: 970-498-1343	Alison Hill, DD: 970-295-5942
Columbia River Basin	Kerry Overton, Acting AWA PM: 208-373-4357	
Communications Network, R&D (COMNET)	Steve Ambrose. ASD Comm: 970-295-5922	Dave Tippets, Public Affairs: 970-295-5930
Congressional Inquiries	Steve Ambrose. ASD Comm: 970-295-5922	Ron Ketter, DD: 970-295-5917
Conservation Education Program	Rita Klepac, CE Coordinator: 970-295-5918	
Cooperative Ecosystem Unit (CESU)	Ron Ketter, Acting DD: 970-295-5917	Jan Engert, Acting Director A&I
Current Research Information System	Rita Klepac: 970-295-5918	Todd Mowrer, Acting ASD SMA: 970-295-5960
4000 - Data Quality Act	Todd Mowrer, Acting ASD SMA: 970-295-5960	Alison Hill, DD: 970-295-5942
4060-2 - Experimental Forests / Ranges / Sites	Todd Mower, Science Applications Specialist: 970-295-5960	Jan Engert, Acting Director A&I
Extension Foresters	Steve Ambrose. ASD Comm: 970-295-5922	Jan Engert, Acting Director A&I
Federal Laboratory Consortium	Ron Ketter, Acting DD: 970-295-5917	
4801 - Forest Inventory & Analysis (FIA)	Michael Wilson, IM PM: 801-625-5407	Renee O' Brien, IM Deputy: 801-625-5371
FS Research Executive Team (FSRET)	Sam Foster, SD: 970-295-5925	Ron Ketter, Acting DD: 970-295-5917, Alison Hill, DD: 970-295-5942
Global Change	Cindy Swanson, HD PM: 406-542-4172	Linda Joyce, Climate Change Coordinator: 970-498-2560
1930 - Government Performance Review Act	Todd Mowrer, Acting ASD SMA: 970-295-5960	Alison Hill, DD: 970-295-5942
Great Basin Management Partnership	Jan Engert, Acting Director A&I	Jeanne Chambers, Research Ecologist: 775-784-5329

Issue/Topic/Group/Program	Primary Contact	Secondary Contact
Greater Yellowstone Coordinating Committee	David Parsons, ALWRI PM: 406-542-4193	
Inter-Regional Ecosystem Management Coordinating Group	Alison Hill, DD: 970-295-5942; Ron Ketter, Acting DD: 970-295-5917	
4000 - Invasive Species	Durant McArthur, GSD PM: 801-356-5112	Alison Hill, DD: 970-295-5942
3100 / 5100 - Joint Fire Science	Colin Hardy, FFS PM: 406-329-4978	Alison Hill, DD: 970-295-5942
Leadership Development/Retention	Ron Ketter, Acting DD: 970-295-5917	Alison Hill, DD: 970-295-5942
Legislative Affairs	Steve Ambrose. ASD Comm: 970-295-5922	Dave Tippetts, Public Affairs: 970-295-5930
National Association of Professional Forestry Schools and Colleges	Ron Ketter, Acting DD: 970-295-5917	Sam Foster, SD: 970-295-5925
National Association of State Foresters	Sam Foster, SD: 970-295-5925	Ron Ketter, Acting DD: 970-295-5917
1950 - National Environmental Policy Act	Todd Mower, Science Applications Specialist: 970-295-5960	Ron Ketter, Acting DD: 970-295-5917
3100 / 5100 - National Fire Plan	Colin Hardy, FFS PM: 406-329-4978	Alison Hill, DD: 970-295-5942
National Leadership Team	Sam Foster, SD: 970-295-5925	Alison Hill, DD: 970-295-5942; Ron Ketter, Acting DD: 970-295-5917
1670 - National Library	Carol Ayer, Acting National Librarian: 970-498-1310	Steve Ambrose. ASD Comm: 970-295-5922
NEON	Todd Mower, Science Applications Specialist: 970-295-5960	
Public Affairs/ Communications/ Media Relations	Steve Ambrose. ASD Comm: 970-295-5922	Dave Tippetts, Public Affairs: 970-295-5930
1630 - Publications	Lane Eskew, Editor: 970-498-1388	Steve Ambrose. ASD Comm: 970-295-5922
R1 Liaison	Jan Engert, Acting Director A&I	Ron Ketter, Acting DD: 970-295-5917
R2 Liaison	Steve Ambrose. ASD Comm: 970-295-5922	Ron Ketter, Acting DD: 970-295-5917
R3 Liaison	Steve Ambrose. ASD Comm: 970-295-5922	Ron Ketter, Acting DD: 970-295-5917
R4 Liaison	Jan Engert, Acting Director A&I	Ron Ketter, Acting DD: 970-295-5917
2200 – Rangeland / Grassland / Shrublands	Durant McArthur, PM GSD: 801-356-5112	Alison Hill, DD: 970-295-5942
Request for Proposals (RFPs)	Deb Jensen, Grants and Agreements: 970-498-1172	
6100 - Research Grade Evaluation Guide	Alison Hill, DD: 970-295-5942	
4060-3 - Research Natural Areas (RNA)	Todd Mower, Science Applications Specialist: 970-295-5960	Jan Engert, Acting Director A&I
Region 1	John Byrne, Forester: 208-883-2363	
Region 2	Laurie Huckaby, Ecologist: 970-498-1298	
Region 3	Carolyn Sieg, Research Ecologist: 928-556-2151	
Region 4	Stan Kitchen, Research Botanist: 801-356-5109 and Nancy Shaw, Research Botanist: 208-373-4360	
Resources Planning Act Assessments (RPA)	Cindy Swanson, HD PM: 406-542-4172	Alison Hill, DD: 970-295-5942
Shrub Research Consortium	Durant McArthur, GSD PM: 801-356-5112	Stan Kitchen, Research Botanist: 801-356-5109
Skeen Rangeland Restoration Institute	Durant McArthur, GSD PM: 801-356-5112	
Southwest Ecological Restoration Institutes (SWERI)	Sam Foster, SD: 970-295-5926 (Exec Lead)	Carolyn Sieg, Research Plant Ecologist: 928-556-2151 (Development Team, SWERI)
Southwest Strategy Executive Committee	Ron Ketter, Acting DD: 970-295-5917	Dennis Ferguson, Acting FWE PM: 208-883-2351
State Foresters	Ron Ketter, Acting DD: 970-295-5917	Steve Ambrose. ASD Comm: 970-295-5922
Strategic Planning	Todd Mowrer, Acting ASD SMA: 970-295-5960	Jennifer Hayes, Analyst: 970-295-5958
Strategic Program Areas (SPAs)	Alison Hill, DD: 970-295-5942	
Fire	Colin Hardy, FFS PM: 406-329-4978	
Invasive Species	Durant McArthur, GSD PM: 801-356-5112	
Recreation	Cindy Swanson, HD PM: 406-542-4172	
Resource Management and Use	Dennis Ferguson, Acting FWE PM: 208-883-2351	
Resource Data and Analysis	Michael Wilson, IM PM: 801-625-5407	
Water and Air	Kerry Overton, Acting AWA PM: 208-373-4357	
Wildlife and Fish	Bill Block, WTE PM: 928-556-2161	

Issue/Topic/Group/Program	Primary Contact	Secondary Contact
Tribal Liaison	Steve Ambrose. ASD Comm: 970-295-5922	Ron Ketter, Acting DD: 970-295-5917
2500 / 3500 - Watershed Research	Kerry Overton, Acting AWA PM: 208-373-4357	Alison Hill, DD: 970-295-5942
Websites	Nick Reyna, A&I: 970-295-5905	Steve Ambrose. ASD Comm: 970-295-5922
Western Association of State Foresters	Sam Foster, SD: 970-295-5925	Ron Ketter, Acting DD: 970-295-5917
Western Forestry Leadership Coalition	Sam Foster, SD: 970-295-5925	Ron Ketter, Acting DD: 970-295-5917
Western Governors' Association	Sam Foster, SD: 970-295-5925	Ron Ketter, Acting DD: 970-295-5917
Western National Association of University Forest Resource Programs	Sam Foster, SD: 970-295-5925	Alison Hill, DD: 970-295-5942
Wildland Fire Decision Support Partnership (FRAMES)	Jan Engert, Acting Director A&I	Colin Hardy, FFS PM: 406-329-4978
Wildlife/T&E	Bill Block, WTE PM: 928-556-2161	Alison Hill, DD: 970-295-5942
Wilderness	David Parsons, ALWRI PM: 406-542-4193	
1200 - Workforce Planning	Alison Hill, DD: 970-295-5942	Dolores Rottach, ASD Ops: 970-498-1325

Telephone Directory*

Name	Title	Location	Phone Number
Director's Executive Team			
G. SAM FOSTER	Station Director	Fort Collins, CO	970-295-5926
Alison Hill	Deputy Station Director	Fort Collins, CO	970-295-5942
Vacant (Ron Ketter, Acting)	Deputy Station Director	Fort Collins, CO	970-295-5917
Director's Office Team			
Steve Ambrose	ASD for Communications	Fort Collins, CO	970-295-5922
Dolores Rottach	ASD for Operations	Fort Collins, CO	970-295-5924
Vacant (Todd Mowrer, Acting)	ASD for Strategic Management	Fort Collins, CO	970-295-5915
Angela Baca	Civil Rights Director	Fort Collins, CO	970-498-1343
Vacant (Jan Engert, Acting)	Science Application and Integration Director		406-542-3256
Science Program Managers			
William Block	Wildlife & Terrestrial Ecosystems	Flagstaff, AZ	928-556-2161
Dennis Ferguson (Acting)	Forests & Woodlands Ecosystems	Moscow, ID	208-883-2351
Colin Hardy	Fire, Fuel & Smoke	Missoula, MT	406-329-4978
E. Durant McArthur	Grasslands, Shrublands & Desert Ecosystems	Provo, UT	801-356-5112
Kerry Overton (Acting)	Air, Water & Aquatic Environments	Boise, ID	208-373-4357
David Parsons	Aldo Leopold Wilderness Research Institute	Missoula, MT	406-542-4193
Cindy Swanson	Human Dimensions	Missoula, MT	406-542-4172
Michael Wilson	Inventory & Monitoring	Ogden, UT	801-625-5407
Director's Representatives			
Deborah Finch	Albuquerque Forestry Sciences Laboratory		505-724-3671
Kerry Overton	Boise Aquatic Sciences Laboratory		208-373-4357
Vicki Saab	Bozeman Forestry Sciences Laboratory		406-994-5032
William Block	Flagstaff Southwest Forest Science Complex		928-556-2161
Linda Joyce	Fort Collins Forestry Sciences Laboratory		970-498-2560
Dale Bartos	Logan Forestry Sciences Laboratory		435-755-3567
Cindy Swanson	Missoula Forestry Sciences Laboratory		406-542-4172
Colin Hardy	Missoula Fire Sciences Laboratory		406-329-4978
William Elliot	Moscow Forestry Sciences Laboratory		208-883-2338
Michael Wilson	Ogden Forestry Sciences Laboratory		801-625-5407
Stan Kitchen	Provo Shrub Sciences Laboratory		801-356-5109
Jack Butler	Rapid City Forest and Grassland Research Laboratory		605-716-2160
Robin Tausch	Reno Forestry Sciences Laboratory		775-784-5329

Directory of Scientists and Professionals

Research, Development and Application Programs

Wildland Fire Management RDC&A

Tom Zimmerman	Program Manager	Boise, ID	208-387-5871
John Szymoniak	Science Application Specialist	Boise, ID	208-387-5748

LANDFIRE

Kevin Ryan	Program Manager	Missoula, MT	406-329-4807
Jennifer Bushur	GIS Specialist	Missoula, MT	406-829-6887
Gregory Dillon	Geographer	Missoula, MT	406-829-6783
Lisa Holsinger	GIS Specialist	Missoula, MT	406-329-4810
Kristine Lee	Management & Program Analyst	Missoula, MT	406-829-6977
Don Long	Ecologist	Missoula, MT	406-329-4706
Maureen Mislivets	GIS Specialist	Missoula, MT	406-329-4816
Jeff Natharius	Geographer	Missoula, MT	406-829-6782
Sean Parks	GIS Specialist	Missoula, MT	406-829-6785
Matt Reeves	GIS Specialist	Missoula, MT	406-829-7337
Matthew Rollins	Supervisory Ecologist	Missoula, MT	406-329-4960
Thomas Thompson	GIS Specialist	Missoula, MT	406-829-6905
Brendan Ward	GIS Specialist	Missoula, MT	406-829-6792
Marc Weber	Biological Scientist	Missoula, MT	406-829-6976
Ann Wolf	GIS Specialist	Missoula, MT	406-329-4837

Human Factors and Risk Management (Proposed)

Jim Saveland	Program Manager	Fort Collins, CO	970-498-1193
--------------	-----------------	------------------	--------------

Science Programs

Air, Water and Aquatic Environments

Kerry Overton	Acting Program Manager	Boise, ID	208-373-4357
Tom Black	Hydrologist	Boise, ID	208-373-4363
Carolyn Bohn	Hydrologist	Boise, ID	208-373-4367
Robert Brown	Hydrologist	Moscow, ID	208-883-2356
John Buffington	Research Geomorphologist	Boise, ID	208-373-4384
Gwynne Chandler	Fisheries Biologist	Boise, ID	208-373-4372
Matthew Dare	Ecologist	Boise, ID	208-373-4371
Mark Dixon	Hydrologist	Fraser, CO	970-726-5220
Kate Dwire	Research Ecologist	Fort Collins, CO	970-498-1016
Kelly Elder	Supervisory Research Hydrologist	Fort Collins, CO	970-498-1233
William Elliot	Supv. Research Civil Engineer	Moscow, ID	208-883-2338
Randy Foltz	Research Engineer	Moscow, ID	208-883-2312
John Guzevich	Supv. Fisheries Biologist	Boise, ID	208-373-4398
David Hall	Computer Specialist	Moscow, ID	208-883-2332
Dona Horan	Fisheries Biologist	Boise, ID	208-373-4399
Robert Hubbard	Research Ecologist	Fort Collins, CO	970-498-1260
Dan Isaak	Fisheries Biologist	Boise, ID	208-373-4385
Ben Kopyscianski	Hydrologist	Moscow, ID	208-883-2323
Charles Luce	Research Hydrologist	Boise, ID	208-373-4382
Claire McGrath	Ecologist	Boise, ID	208-373-4380
Jim McKean	Research Geomorphologist	Boise, ID	208-373-4383
Alvin Medina	Rangeland Mgmt. Specialist	Flagstaff, AZ	928-556-2180
Robert Musselman	Research Plant Physiologist	Fort Collins, CO	970-498-1239
Dave Nagel	Physical Scientist	Boise, ID	208-373-4397
Daniel Neary	Supv. Research Soil Scientist	Flagstaff, AZ	928-556-2176
Charles Rhoades	Research Biogeochemist	Fort Collins, CO	970-498-1250
John Rinne	Research Fisheries Biologist	Flagstaff, AZ	928-556-2187
Peter Robichaud	Research Engineer	Moscow, ID	208-883-2349
Sandra Ryan-Burkett	Research Hydrologist	Fort Collins, CO	970-498-1015
Kathleen Seyedbagheri	Hydrologist	Boise, ID	208-373-4370
Russ Thurow	Research Fisheries Biologist	Boise, ID	208-373-4377
Mike Young	Research Fisheries Biologist	Missoula, MT	406-542-3254

Fire, Fuel, and Smoke Sciences (RMRS-4405)

Colin Hardy	Program Manager	Missoula, MT	406-329-4978
Patricia Andrews	Research Physical Scientist	Missoula, MT	406-329-4827
Stephen Baker	Chemist	Missoula, MT	406-329-4860
Roberta Bartlette	Forester	Missoula, MT	406-329-4828
Larry Bradshaw	Meteorologist	Missoula, MT	406-329-4979
Bret Butler	Research Mechanical Engineer	Missoula, MT	406-329-4801
Michael Chandler	Forestry Technician	Missoula, MT	406-329-4868
Carolyn Chase	Mathematician	Missoula, MT	406-329-4823
Jack Cohen	Research Physical Scientist	Missoula, MT	406-329-4821
Wayne Cook	Fire Technology Transfer Specialist	Missoula, MT	406-329-4824
Stacy Drury	Ecologist	Missoula, MT	406-329-4800
Mark Finney	Research Forester	Missoula, MT	406-329-4832
Wei-Min Hao	Supv. Research Chemist	Missoula, MT	406-329-4838
Michael Harrington	Research Forester	Missoula, MT	406-329-4836
Donald Helmbrecht	GIS Specialist	Missoula, MT	406-829-7370
Emily Heyerdahl	Research Forester	Missoula, MT	406-829-6939
Sharon Hood	Forester	Missoula, MT	406-329-4818
Daniel Jimenez	Mechanical Engineer	Missoula, MT	406-329-4724
Matt Jolly	Ecologist	Missoula, MT	406-329-4848
Eva Karau	GIS Specialist	Missoula, MT	406-829-6950
Robert Keane	Supv. Research Ecologist	Missoula, MT	406-329-4846
Vladimir Kovalev	Atmospheric Physicist	Missoula, MT	406-329-4862
Laurie Kurth	Fire Management Specialist	Missoula, MT	406-329-4947
Duncan Lutes	Ecologist	Missoula, MT	406-329-4761
Chuck McHugh	Forester	Missoula, MT	406-829-6953
James Menakis	Forester	Missoula, MT	406-329-4958
Bryce Nordgren	Physical Scientist	Missoula, MT	406-829-6955
Russell Parsons	Student Trainee, Forestry	Missoula, MT	406-329-4872
James Reardon	Forester	Missoula, MT	406-329-4849
Elizabeth Reinhardt	Research Forester	Missoula, MT	406-329-4760
Kathy Schon	Ecologist	McCall, ID	208-634-0631
Robert Seli	Forester	Missoula, MT	406-826-4330
Helen Smith	Ecologist	Missoula, MT	406-329-4707
Jane Smith	Supervisory Ecologist	Missoula, MT	406-329-4805
Paul Sopko	Physical Scientist	Missoula, MT	406-329-4830
Diane Trethewey	Mathematician	Missoula, MT	406-329-4822
Shawn Urbanski	Research Physical Scientist	Missoula, MT	406-329-4829
Karl Zeller	Research Meteorologist	Fort Collins, CO	970-498-1238

Forest and Woodland Ecosystems (RMRS-4157)

Dennis Ferguson	Acting Program Manager	Moscow, ID	208-883-2351
Ann Abbott	Student Trainee, Forestry	Moscow, ID	208-882-3557
Michael Amacher	Research Soil Scientist	Logan, UT	435-755-3560
Dale Bartos	Research Ecologist	Logan, UT	435-755-3567
Michael Battaglia	Ecologist	Fort Collins, CO	970-498-1286
Barbara Bentz	Research Entomologist	Logan, UT	435-755-3577
John Byrne	Forester	Moscow, ID	208-883-2363
Jimmie Chew	Forester	Missoula, MT	406-542-4171
Nicholas Crookston	Operations Research Analyst	Moscow, ID	208-883-2317
Samuel Cushman	Research Ecologist	Missoula, MT	406-329-2133
Bob Denner	Forester	Moscow, ID	208-883-2316
Paula Fornwalt	Student Trainee, Ecology	Fort Collins, CO	970-498-2581
James Fowler	Ecologist	Flagstaff, AZ	928-556-2172
John Frank	Electronics Engineer	Fort Collins, CO	970-498-1319
Brian Geils	Research Plant Pathologist	Flagstaff, AZ	928-556-2076
Gerald Gottfried	Research Forester	Phoenix, AZ	602-225-5357

Forest and Woodland Ecosystems (RMRS-4157)

Russell Graham	Research Forester	Moscow, ID	208-883-2325
Matt Hansen	Entomologist	Logan, UT	435-755-3575
Laurie Huckaby	Ecologist	Fort Collins, CO	970-498-1298
Andrew Hudak	Research Forester	Moscow, ID	208-883-2327
Terrie Jain	Research Forester	Moscow, ID	208-883-2331
Ned Klopfenstein	Research Plant Pathologist	Moscow, ID	208-883-2310
Ann Lynch	Research Entomologist	Tucson, AZ	520-626-9582
William Massman	Research Meteorologist	Fort Collins, CO	970-498-1296
Ward McCaughey	Research Forester	Missoula, MT	406-329-2125
Kirk Moeller	Info Tech Spec	New Hampshire	207-457-5383
Jose Negron	Research Entomologist	Fort Collins, CO	970-498-1252
Steven Overby	Soil Scientist	Flagstaff, AZ	928-556-2184
Deborah Page-Dumroese	Supv. Research Soil Scientist	Moscow, ID	208-883-2339
Tom Rice	Geographer	Moscow, ID	208-883-2308
Michael Ryan	Research Ecologist	Fort Collins, CO	970-498-1012
Anna Schoettle	Research Plant Physiologist	Fort Collins, CO	970-498-1333
Carolyn Sieg	Research Ecologist	Flagstaff, AZ	928-556-2151
Christine Stalling	Biologist	Missoula, MT	406-542-4153
Elaine Sutherland	Supv. Research Biologist	Missoula, MT	406-542-4169
Steve Sutherland	Research Ecologist	Missoula, MT	406-329-4813
Jonalea Tonn	Forester	Moscow, ID	208-883-2348
Jim Vandygriff	Entomologist	Logan, UT	435-755-3574
Marcus Warwell	Geneticist	Moscow, ID	208-883-2322
David Wright	Ecologist	Missoula, MT	406-542-4181
Paul Zambino	Research Plant Pathologist	Moscow, ID	208-883-2334

Grassland, Shrubland, and Desert Ecosystems (RMRS-4255)

E. Durant McArthur	Program Manager	Provo, UT	801-356-5112
Jack Butler	Supervisory Ecologist	Rapid City, SD	605-716-2160
Jeanne Chambers	Research Ecologist	Reno, NV	775-784-5329
Robert Cox	Ecologist	Boise, ID	208-373-4358
Deborah Finch	Supv. Res. Wildlife Biologist	Albuquerque, NM	505-724-3671
Paulette Ford	Research Ecologist	Albuquerque, NM	505-724-3670
Scott Jensen	Botanist	Provo, UT	801-356-5128
Stanley Kitchen	Research Botanist	Provo, UT	801-356-5109
George Markin	Research Entomologist	Bozeman, MT	406-994-4892
Alice McSweeney	Social Science Analyst	Albuquerque, NM	505-724-3677
Susan Meyer	Research Ecologist	Provo, UT	801-356-5125
Cheryl Nowak	Biologist	Reno, NV	775-784-5329
Burton Pendleton	Research Ecologist	Albuquerque, NM	505-724-3674
Rosemary Pendleton	Research Ecologist	Albuquerque, NM	505-724-3673
Carol Raish	Research Archeologist	Albuquerque, NM	505-724-3666
Mark Rumble	Research Wildlife Biologist	Rapid City, SD	605-716-2174
Stewart Sanderson	Geneticist	Provo, UT	801-356-5111
Nancy Shaw	Research Botanist	Boise, ID	208-373-4360
Robin Tausch	Supv. Research Rangeland Scientist	Reno, NV	775-784-5329
Daniel Uresk	Research Biologist	Rapid City, SD	605-341-2808

Human Dimensions (RMRS-4853)

Cindy Swanson	Program Manager	Missoula, MT	406-542-4172
Tony Baltic	Operations Research Analyst	Fort Collins, CO	970-295-5976
Michael Bevers	Research Forester	Fort Collins, CO	970-295-5911
Thomas Brown	Supervisory Economist	Fort Collins, CO	970-295-5968
David Calkin	Research Forester	Missoula, MT	406-542-4151
Janie Canton-Thompson	Social Science Analyst	Missoula, MT	406-542-3248
Patricia Champ	Research Economist	Fort Collins, CO	970-295-5967
Curtis Flather	Research Wildlife Biologist	Fort Collins, CO	970-295-5910

Human Dimensions (RMRS-4853)

Linda Joyce	Supv. Research Rangeland Scientist	Fort Collins, CO	970-498-2560
J. Greg Jones	Supervisory Research Forester	Missoula, MT	406-542-4167
Brian Kent	Supervisory Research Forester	Fort Collins, CO	970-295-5955
Marni Koopman	Wildlife Biologist	Fort Collins, CO	970-498-1282
Kurt Krueger	Economist	Missoula, MT	406-542-3243
Daniel McCollum	Economist	Fort Collins, CO	970-295-5962
John Mitchell	Research Rangeland Scientist	Fort Collins, CO	970-295-5957
Sharon Ritter	Ecologist	Stevensville, MT	406-777-7416
Deborah Shields	Economist	Fort Collins, CO	970-295-5975
Janet Sullivan	Biologist	Missoula, MT	406-542-4185
Steve Tapia	Wildlife Biologist	Woodland Park, CO	719-477-4206
Daniel Williams	Research Social Scientist	Fort Collins, CO	970-295-5970

Inventory and Monitoring--Interior West Forest Inventory and Analysis Program (RMRS-4801)

Michael Wilson	Program Manager	Ogden, UT	801-625-5407
Renee O'Brien	Deputy Program Manager	Ogden, UT	801-625-5371
Phyllis Adams	Statistician	Portland, OR	503-808-2052
Robert Bailey	Geographer	Fort Collins, CO	970-498-2617
Mike Bell	Supervisory Forester	Bozeman, MT	406-994-5033
Susan Brown	IT Specialist	Ogden, UT	801-625-5380
Brian Bryant	Supervisory Forester	Whitefish, MT	406-270-2729
John Capuano	Supervisory Ecologist	Tucson, AZ	520-425-7080
Raymond Czaplewski	Research Mathematical Statistician	Fort Collins, CO	970-295-5973
Larry DeBlander	Forester	Ogden, UT	801-625-5204
Jim Dexter	Supervisory Forester	Prescott, AZ	928-848-8661
Bill Dunning	Supervisory Forester	Ogden, UT	801-625-5463
Tami Fikstad	Ecologist	Missoula, MT	406-214-6066
Tracey Frescino	Forester	Ogden, UT	801-625-5402
Sean Healey	Ecologist	Ogden, UT	801-625-5770
David Herwig	Supervisory Forester	Ogden, UT	801-725-4096
Dana Lambert	Supervisory Ecologist	Gunnison, CO	970-642-1155
Bryan Lanier	IT Specialist	Madison, WI	608-663-5185
Chuck Liff	Computer Scientist	Ogden, UT	801-625-5659
James Menlove	Ecologist	Ogden, UT	801-625-5426
Gretchen Moisen	Research Forester	Ogden, UT	801-625-5384
Alberto Moreno	Supervisory Forester	Ogden, UT	801-625-5613
Kent Mueller	IT Specialist	Ogden, UT	801-625-5920
Paul Patterson	Statistician	Fort Collins, CO	970-295-5966
Robert Rhoades	Supervisory Forester	Ogden, UT	801-625-5685
Mark Rubey	IT Specialist	Ogden, UT	801-625-5647
Ray Safiran	Ecologist	Driggs, ID	208-360-6181
John Shaw	Forester	Ogden, UT	801-625-5673
Maryfaith Snyder	Supervisory Forester	Ogden, UT	801-625-5724
Mike Thompson	Forester	Ogden, UT	801-625-5374
Ronald Tymcio	GIS Specialist	Ogden, UT	801-625-5554
Chris Witt	Ecologist	Ogden, UT	801-625-5330
Sharon Woudenberg	Supervisory Forester	Ogden, UT	801-625-5379
Thomas Wuenschell	Supervisory Forester	Ogden, UT	801-625-5933

Wildlife and Terrestrial Ecosystems (RMRS-4256)

William Block	Program Manager	Flagstaff, AZ	928-556-2161
Jeff Copeland	Wildlife Biologist	Missoula, MT	406-542-4165
Jon Dudley	Ecologist	Boise, ID	208-373-4378
Joseph Ganey	Research Wildlife Biologist	Flagstaff, AZ	928-556-2156
Teryl Grubb	Research Wildlife Biologist	Flagstaff, AZ	928-556-2155
Dan Huebner	Technology Consultant	Flagstaff, AZ	928-814-6350
Jose Iniguez	Research Ecologist	Flagstaff, AZ	928-556-2159

Wildlife and Terrestrial Ecosystems (RMRS-4256)

Roy Lopez	Wildlife Biologist	Flagstaff, AZ	928-556-2162
Kevin McKelvey	Research Ecologist	Missoula, MT	406-542-4163
Yvette Ortega	Ecologist	Missoula, MT	406-542-3246
Dean Pearson	Research Ecologist	Missoula, MT	406-542-4159
Richard Reynolds	Supv. Research Wildlife Biologist	Fort Collins, CO	970-295-5972
Len Ruggiero	Supv. Research Wildlife Biologist	Missoula, MT	406-542-4160
Robin Russell	Ecologist	Bozeman, MT	406-994-3002
Vicki Saab	Research Wildlife Biologist	Bozeman, MT	406-994-5032
Michael Schwartz	Research Ecologist	Missoula, MT	406-542-4161
John Squires	Research Wildlife Biologist	Missoula, MT	406-542-4164
Brenda Strohmeyer	Conservation Education Coordinator	Flagstaff, AZ	928-556-2185

Aldo Leopold Wilderness Research Institute (RMRS-4901)

David Parsons	Program Manager	Missoula, MT	406-542-4193
Anne Black	Social Science Research Analyst	Missoula, MT	406-329-2126
David Cole	Research Biologist	Missoula, MT	406-542-4199
Brett Davis	GIS Specialist	Missoula, MT	406-329-2127
Peter Landres	Ecologist	Missoula, MT	406-542-4189
Carol Miller	Research Ecologist	Missoula, MT	406-542-4198
Alan Watson	Supv. Research Social Scientist	Missoula, MT	406-542-4197
Vita Wright	Wilderness Specialist	Missoula, MT	406-542-4194

* For a more complete RMRS Telephone Directory, please visit our website at <http://www.fs.fed.us/rmrs/docs/staff/rmrs-directory.pdf>

Did You Know?



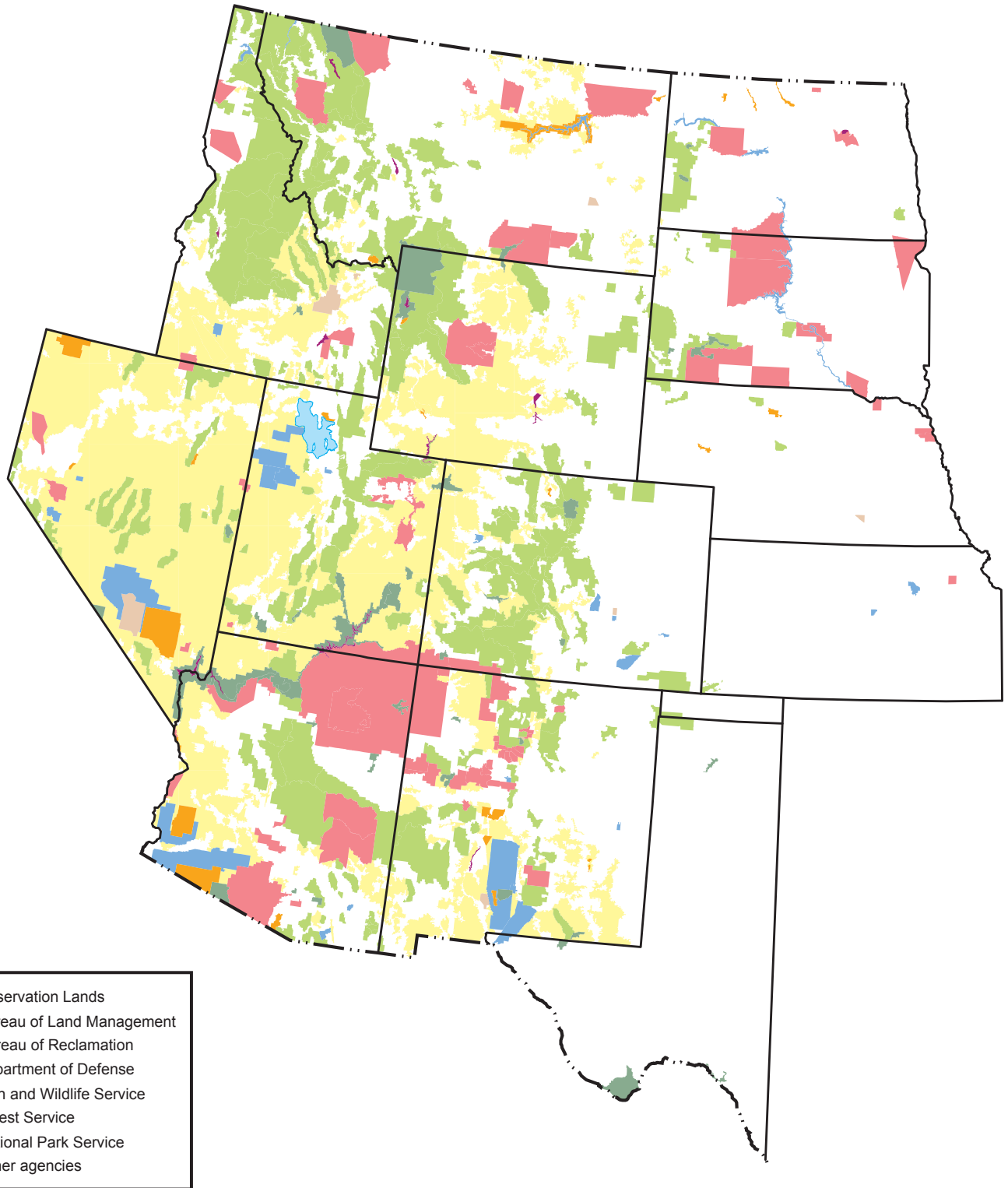
- ❖ 48% of Congressionally designated wilderness in the lower 48 states is in our territory.
- ❖ We service approximately 53% of NFS lands and 4 out of 9 NFS Regions.
- ❖ RMRS has consistently received ~15% of the total FS R&D appropriated budget.

- ❖ 55% of BLM lands and 55% of protected lands in the lower 48 states are in our territory.
- ❖ RMRS territory is home to the original Smokey Bear who was found as a burned cub following a wildfire in southern New Mexico.
- ❖ The Fort Valley Experimental Forest, established in 1908 near Flagstaff, Arizona, is the site of the nation's first Forest Service research endeavor.



- ❖ We contribute science to the management of over 103 million acres of NFS land.
- ❖ We are responsible for territory in 28% of the contiguous US, servicing 18% of the US population.
- ❖ RMRS had 92 Research Grade Evaluation Guide scientists in FY 2007.

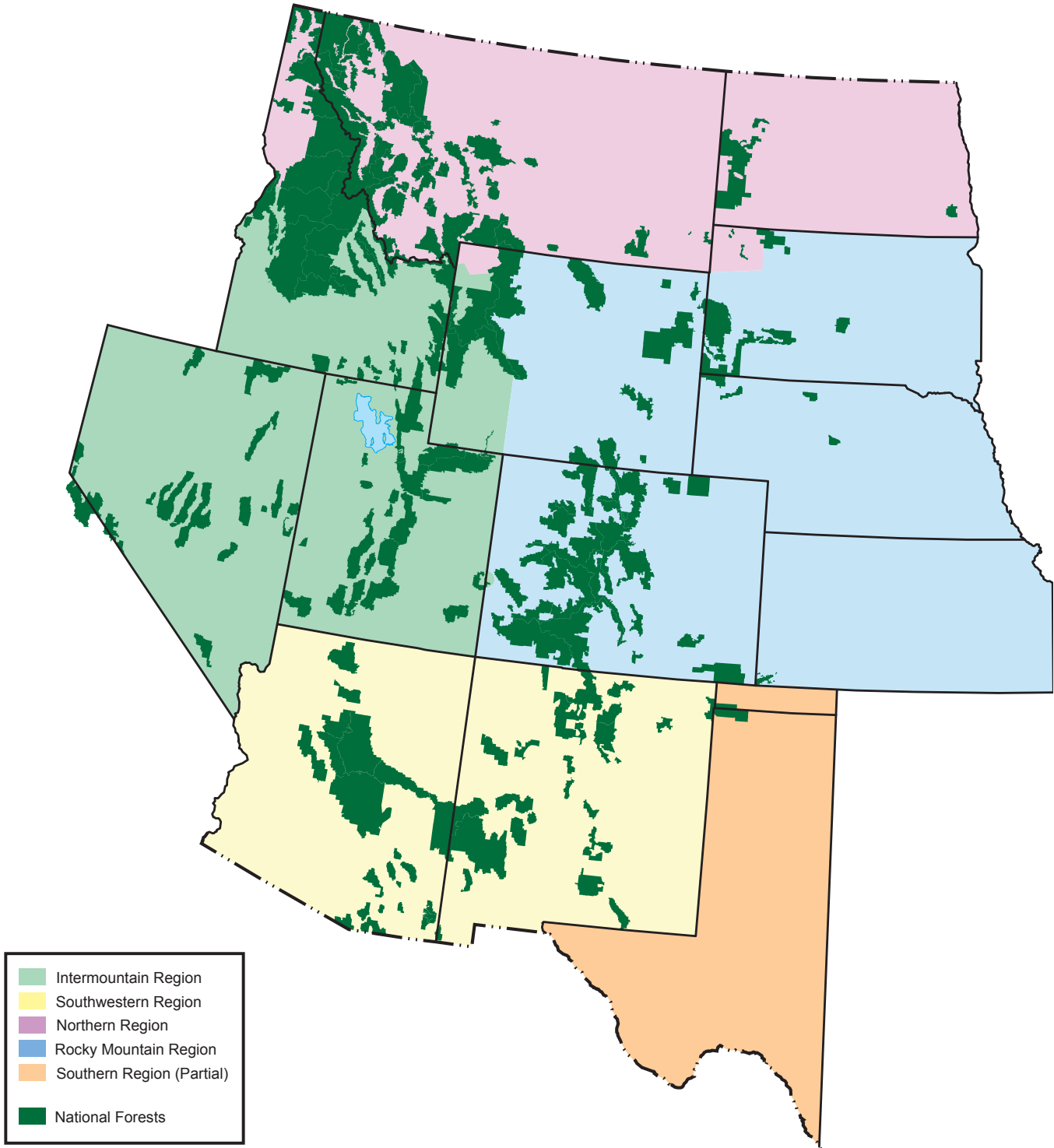
Federal and Reservation Lands Within The Rocky Mountain Research Station Territory



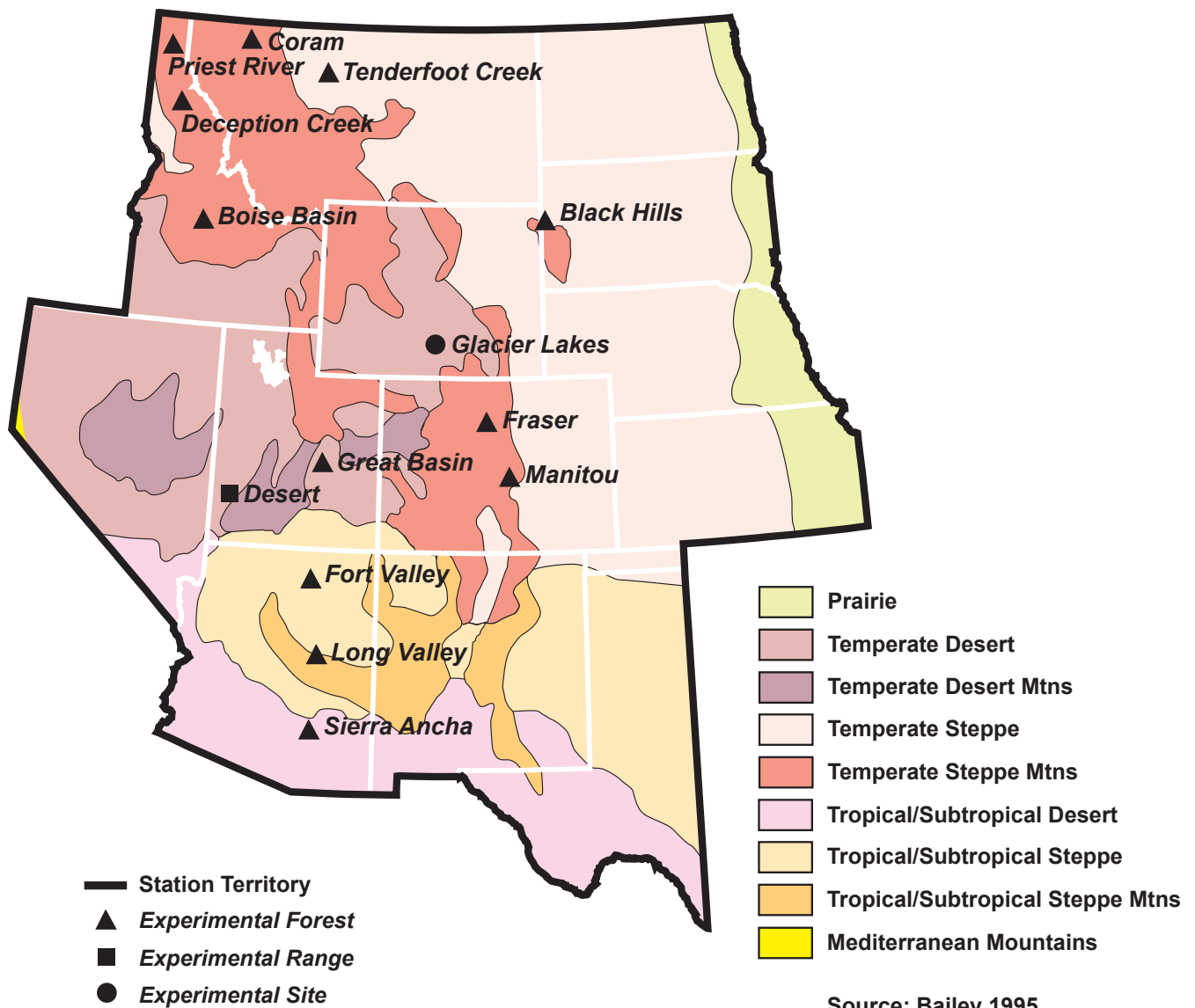
Rivers and Lakes Within The Rocky Mountain Research Station Territory



Forest Service Regions and National Forests and Grasslands Within The Rocky Mountain Research Station Territory



Experimental Areas and Ecoregions Within The Rocky Mountain Research Station Territory



Research Natural Areas by Forest Service Region

	Established RNAs
Northern Region (R1)	114
Rocky Mountain Region (R2)	56
Southwestern Region (R3)	18
Intermountain Region (R4)	104



Station Headquarters
Natural Resources Research Center,
2150 Centre Avenue, Building A,
Fort Collins, CO 80526

<http://www.fs.fed.us/rmrs>
<http://fsweb.rmrs.fs.fed.us>

The U.S. Department of Agriculture (USDA) prohibits discrimination in all its programs and activities on the basis of race, color, national origin, age, disability, and where applicable, sex, marital status, familial status, parental status, religion, sexual orientation, genetic information, political beliefs, reprisal, or because all or part of an individual's income is derived from any public assistance program. (Not all prohibited bases apply to all programs.) Persons with disabilities who require alternative means for communication of program information (Braille, large print, audiotape, etc.) should contact USDA's TARGET Center at (202) 720-2600 (voice and TDD).

To file a complaint of discrimination, write to USDA, Director, Office of Civil Rights, 1400 Independence Avenue, S.W., Washington, DC 20250-9410, or call (800) 795-3272 (voice) or (202) 720-6382 (TDD). USDA is an equal opportunity provider and employer.