

**NOTICE**

This map is meant to be used to identify open roads and trails and as a supplement to other maps such as the Forest Visitor Map, or a USGS Topographic map. IT IS NOT INTENDED TO BE USED SOLELY FOR NAVIGATION.

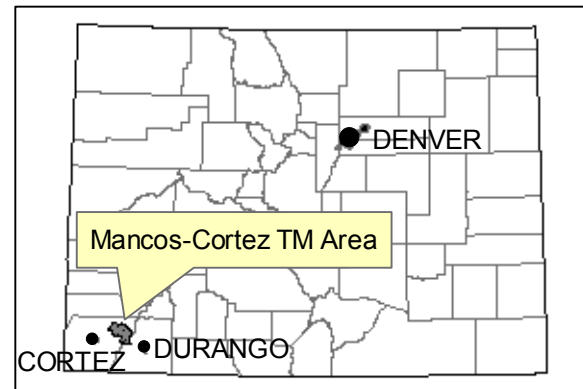
Vehicles used for off-highway recreation on all public lands must comply with Colorado law requiring the registration of all terrain vehicles (ATVs), unlicensed motorcycles (dirt bikes), and unlicensed four-wheel drives. Registration fees fund the Colorado OHV Program. For more information go to: <http://parks.state.co.us/OHV/SandSnowmobiles/OHVProgram/>

Motorized access off of designated routes for various permitted activities (such as livestock operations, minerals exploration, timber sales, firewood cutting, recreation special uses, etc.) is allowed under specific terms and conditions of the permit and/or contract.

**FOR ADDITIONAL INFORMATION**

Stay the Trail [www.staythetrail.org](http://www.staythetrail.org)  
Tread Lightly [www.TreadLightly.org](http://www.TreadLightly.org)  
Leave No Trace [www.lnt.org](http://www.lnt.org)  
San Juan N.F. [www.fs.fed.us/r2/sanjuan/recreation/](http://www.fs.fed.us/r2/sanjuan/recreation/)

**VICINITY MAP**



**MANCOS-CORTEZ TRAVEL MAP**

San Juan National Forest  
Dolores Public Lands Office

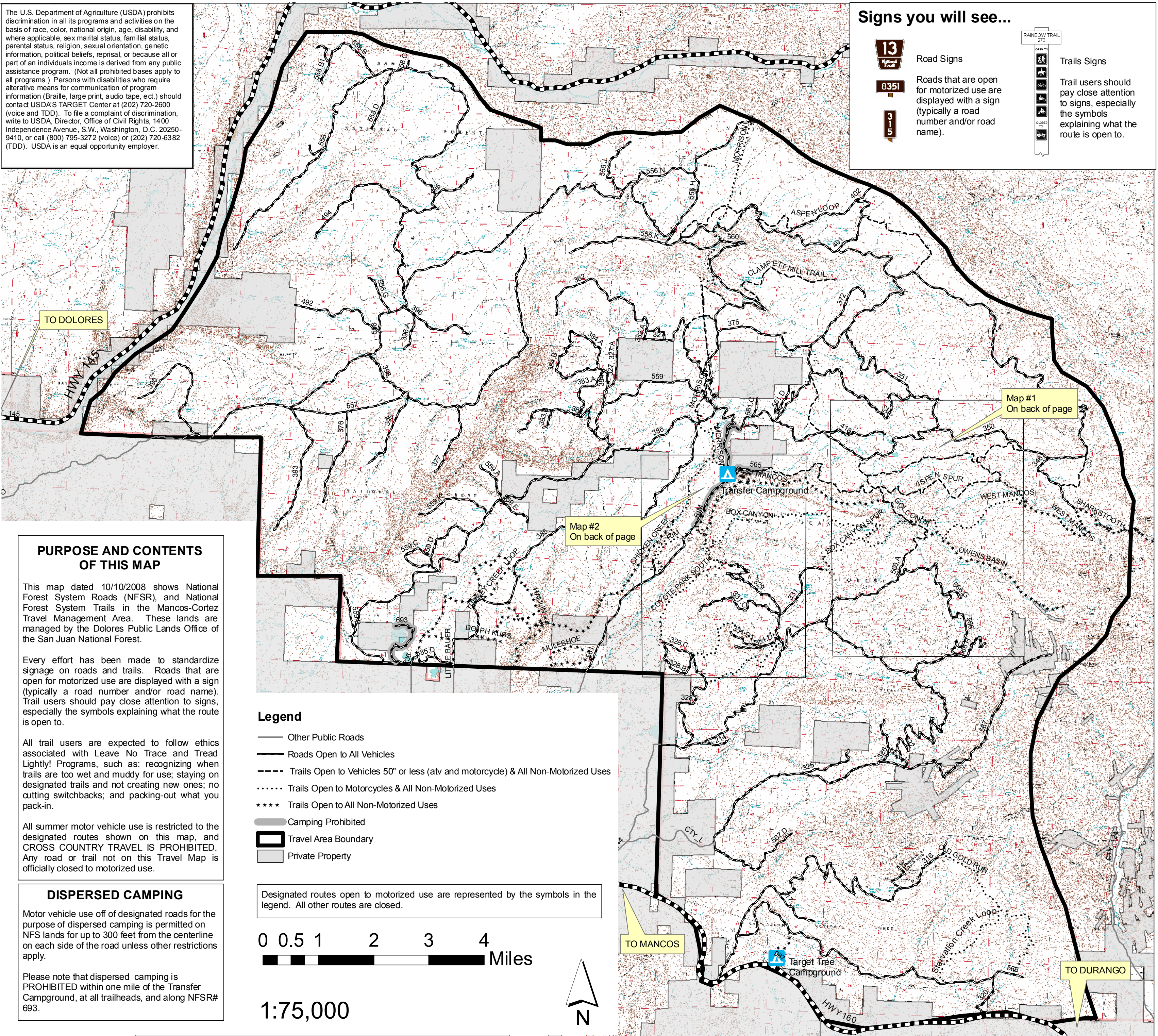


October 2008

Dolores Public Lands Office  
29211 HWY 184  
Dolores, CO 81323-9308  
970-882-7296



The U.S. Department of Agriculture (USDA) prohibits discrimination in all its programs and activities on the basis of race, color, national origin, age, disability, and where applicable, sex marital status, familial status, parental status, religion, sexual orientation, genetic information, political beliefs, reprisal, or because all or part of an individual's income is derived from any public assistance program. (Not all prohibited bases apply to all programs.) Persons with disabilities who require alternative means for communication of program information (Braille, large print, audio tape, etc.) should contact USDA's TARGET Center at (202) 720-2600 (voice and TDD). To file a complaint of discrimination, write to USDA, Director, Office of Civil Rights, 1400 Independence Avenue, S.W., Washington, D.C. 20250-9410, or call (800) 795-3272 (voice) or (202) 720-6382 (TDD). USDA is an equal opportunity employer.



**Signs you will see...**

<p><b>13</b> Highway 13</p> <p><b>8351</b></p> <p><b>3-5</b></p>	<p>Road Signs</p> <p>Roads that are open for motorized use are displayed with a sign (typically a road number and/or road name).</p>	<p>RAINBOW TRAIL 273</p> <p>Trails Signs</p> <p>Trail users should pay close attention to signs, especially the symbols explaining what the route is open to.</p>
--	--	---

**PURPOSE AND CONTENTS OF THIS MAP**

This map dated 10/10/2008 shows National Forest System Roads (NFSR), and National Forest System Trails in the Mancos-Cortez Travel Management Area. These lands are managed by the Dolores Public Lands Office of the San Juan National Forest.

Every effort has been made to standardize signage on roads and trails. Roads that are open for motorized use are displayed with a sign (typically a road number and/or road name). Trail users should pay close attention to signs, especially the symbols explaining what the route is open to.

All trail users are expected to follow ethics associated with Leave No Trace and Tread Lightly! Programs, such as: recognizing when trails are too wet and muddy for use; staying on designated trails and not creating new ones; no cutting switchbacks; and packing-out what you pack-in.

All summer motor vehicle use is restricted to the designated routes shown on this map, and CROSS COUNTRY TRAVEL IS PROHIBITED. Any road or trail not on this Travel Map is officially closed to motorized use.

**DISPERSED CAMPING**

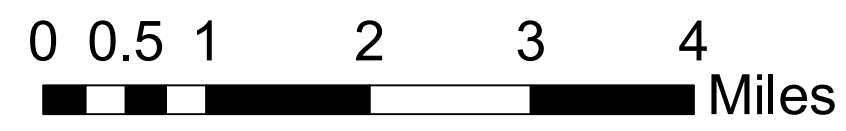
Motor vehicle use off of designated roads for the purpose of dispersed camping is permitted on NFS lands for up to 300 feet from the centerline on each side of the road unless other restrictions apply.

Please note that dispersed camping is PROHIBITED within one mile of the Transfer Campground, at all trailheads, and along NFSR# 693.

**Legend**

- Other Public Roads
- Roads Open to All Vehicles
- Trails Open to Vehicles 50" or less (atv and motorcycle) & All Non-Motorized Uses
- ..... Trails Open to Motorcycles & All Non-Motorized Uses
- \*\*\*\* Trails Open to All Non-Motorized Uses
- Camping Prohibited
- ▭ Travel Area Boundary
- ▭ Private Property

Designated routes open to motorized use are represented by the symbols in the legend. All other routes are closed.



1:75,000

