

Rio Puerco Field Office

[Home](#) > Rio Puerco Field Office

Rio Puerco Field Office

Bureau of Land Management
435 Montano Road, NE
Albuquerque, NM 87107-4935

(505) 761-8700

(505) 761-8911 FAX

Recreation Information

[Rio Puerco Field Office Outdoor Recreation](#)

Kasha-Katuwe Tent Rocks

- [Kasha-Katuwe Tent Rocks Draft RMP/EIS](#)
- [Kasha-Katuwe Tent Rocks Scoping Meeting](#)
- [Newsletter \(PDF\)](#)

Management Plans

Stand-Alone Management Plan

- [The El Malpais Plan: A Stand-Alone Management Plan for El Malpais NCA and Adjoining Lands](#)

Environmental Impact Statements

- [New Mexico Products Pipeline EIS](#)
- [Environmental Assessment for the Treatment of Saltcedar and Other Noxious Weeds in the Chico Arroyo Watershed EA NM-010-02-032 \(PDF, 3MB\)](#)
- [Santo Domingo Pueblo/BLM Land Exchange FEIS](#)

Similar to National Forest Service EISs on this issue.

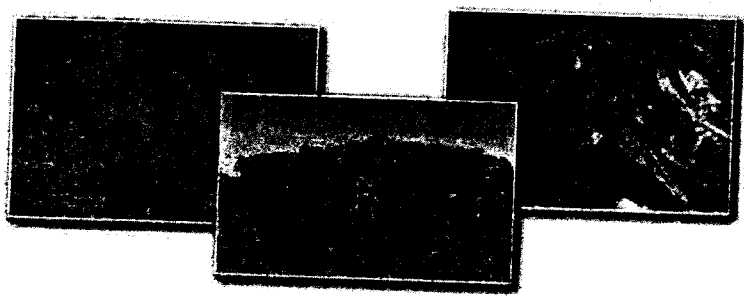
Environmental Assessments

- [San Pedro Rock Quarry Environmental Assessment](#)

Potential future rock quarry to be analyzed in revised TAOS RMP

Resource Management Plans

- [Albuquerque Field Office RMP Update Document 2001 \(PDF 1.7MB\)](#)
- [Albuquerque Field Office RMP Update Document 1999-2000 \(PDF 750K\)](#)



[Home](#)
[State Director's Welcome](#)
[News / Information / What We Do / BLM Facts / Directory](#)
[Browse / Frequently Asked Questions / Feedback / Disclaimer / Privacy Policy](#)
[BLM Electronic Customer Comment Cards](#)

 **Comment Card**

Taos Field Office

[Home > Taos FO](#)

Taos Field Office

Bureau of Land Management
226 Cruz Alta Road
Taos, NM 87571-5983

(505) 758-8851
(505) 758-1620 FAX

[Map to Taos Field Office](#)

Information

[San Pedro Rock Quarry
Environmental Assessment](#)

To be analyzed
in TAOS BMP
EIS

[NM 68 Rockfall Project](#)

Minor project

[Taos Field Office Outdoor
Recreation](#)

[El Monte Roads Right-of-Way
Environmental Assessment](#)

minor project

[Project Power](#)

PNM project covered
elsewhere

[Buckman Water Diversion
Project](#)

Santa Fe
project covered
elsewhere

[The Rio Grande Corridor Final
Plan](#)



[Home](#)

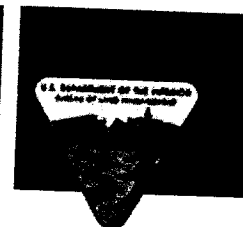
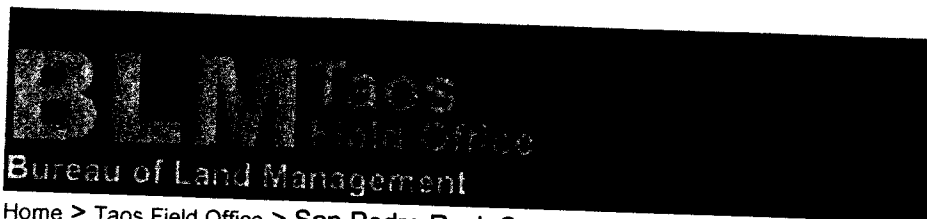
[State Director's Welcome](#)

[News / Information / What We Do / BLM Facts / Directory](#)

[Browse / Frequently Asked Questions / Feedback / Disclaimer / Privacy Policy](#)

[BLM Electronic Customer Comment Cards](#)





Home > Taos Field Office > San Pedro Rock Quarry Environmental Assessment

San Pedro Rock Quarry Environmental Assessment

In 2004, the Bureau of Land Management, Rio Puerco Field Office, Albuquerque District, received and began processing for the Taos Field Office an application from A & M Rock to develop a long-term source for the production of construction aggregates. The rock quarry would be located on public lands in the San Pedro Mountains managed by the Taos Field Office.

Documents

Please stay tuned to this site for additional information as it becomes available.

A preliminary environmental assessment was prepared in 2005. Based upon internal review and growing public interest in how public lands are managed in the San Pedro Area, it has been determined that this proposal can best be analyzed in the upcoming Taos Resource Management Plan Amendment (RMPA). A major goal of the Taos RMPA is to engage communities in discussion about potential uses of public lands in or near their communities.

The Taos RMPA process will begin in early 2006 with public scoping, and it is anticipated that the resulting environmental impact statement and Plan Amendment will be completed by 2008. The Taos RMPA is being prepared by the Taos Field Office.

As the RMPA process gets underway, updates will be provided on this site. If you have questions or would like additional information, please contact John Bailey, Assistant Manager, at the Taos Field Office, at (505) 751-4703.



Taos Field Office

Home > Taos FO > Buckman Water Diversion Project EIS

Buckman Water Diversion Project Draft Environmental Impact Statement

Taos Field Office



Continuing water shortages in the City of Santa Fe and surrounding area have resulted in a critical and immediate need for developing a sustainable means of accessing water supplies.

Additionally, the City and County of Santa Fe seek long term solutions to meet future water needs in a region experiencing rapid growth.

The City of Santa Fe, Santa Fe County, and Las Campanas Limited Partnership have each submitted Special Use Applications to the Forest Service (FS) and Bureau of Land Management (BLM) on a proposal that if authorized, would permit long-term use of public lands administered by the BLM and FS for construction and operation of the Buckman Water Diversion Project. The direct diversion would occur in the Buckman area on the Rio Grande, approximately 15 miles northwest of Santa Fe.

The draft EIS documents an analysis of the effects of a proposal to divert water from the Rio Grande to meet the needs for the City of Santa Fe, Santa Fe County and Las Campanas Limited Partnership.

The 60-day comment period ended February 14, 2005.

Documents

- [Cover, Dear Reader Letter, Abstract, Contents, Acronyms, and Executive Summary](#)
- [Chapter 1](#)
- [Chapter 2](#)
- [Chapter 3](#)
- [List of Preparers and Document Distribution, References Cited, Index](#)

Adobe Acrobat Reader is required to view these documents. [Download Acrobat Reader for free](#)

These documents contain the exact text, graphics and tables of the original printed documents. Typestyles, margins, page widths and length may vary from the original, printed documents due to document conversion to PDF format.





Taos Field Office

[Home](#) > [Taos FO](#) > [Project Power EA](#)

Project Power

Environmental Assessment

Taos Field Office



The Public Service Company of New Mexico (PNM) proposal has been approved to upgrade and enhance the power transmission system in the Santa Fe and Las Vegas, New Mexico area. PNM's technical studies show that the existing transmission line system is reaching the limit of its load capacity, leaving the area vulnerable to electrical system problems.

On June 3, 2004, Acting Field Manager Sam DesGeorges signed the Record of Decision. Both action alternatives have been selected for BLM portions of alternatives A, F, O, and S for potential implementation. While authorization is for either of the two routes on BLM, only one route on BLM lands will ultimately be used. Once a route off BLM lands is selected, the BLM will review and authorize PNM's updated applications for that connected route across BLM lands. BLM will authorize upgrades to the 115 kV transmission line, addition of fiber optic cable, and widening of the existing right-of-way for one of the two routes across BLM lands. PNM has committed to continue working with private citizens, the City of Santa Fe, Santa Fe County, and the State of New Mexico to identify the best possible route across those jurisdictions.

Documents

Please note that these documents are very large and may take several minutes to download even with a high-speed connection.

- [Record of Decision](#)
- [Environmental Assessment \(40MB\)](#)
- [Appendices \(60MB\)](#)
- For further information:
www.project-power.org

Adobe Acrobat Reader is required to view these documents. [Download Acrobat Reader](#) for free



Project Power: Reference

Proposal Approved

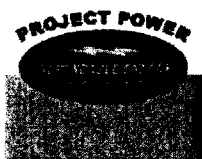
June 30, 2004

The PNM proposal has been approved to upgrade and enhance the power transmission system in the Santa Fe and Las Vegas, N.M., areas. PNM's technical studies show that the existing transmission line system is reaching the limit of its load capacity, leaving the area vulnerable to electrical system problems.

On June 3, 2004, Acting Field Manager Sam DesGeorges signed the Record of Decision. Both action alternatives have been selected for BLM portions of alternatives A, F, O and S for potential implementation. While authorization is for either of the two routes on BLM, only one route on BLM lands will ultimately be used.

Once a route off BLM lands is selected, the BLM will review and authorize PNM's updated applications for that connected route across BLM lands. BLM will authorize upgrades to the 115 kV transmission line, addition of fiber optic cable and widening of the existing right-of-way for one of the two routes across BLM lands.

PNM has committed to continue working with private citizens, the City of Santa Fe, Santa Fe County and the State of New Mexico and has identified the best possible route across those jurisdictions as being Route A.



why

how

when

what

reference

us



Copyright © 2005, Project Power. All rights reserved.

**FINAL
BUREAU OF LAND MANAGEMENT
FINDING OF NO SIGNIFICANT IMPACT AND DECISION RECORD**

Proposal: Public Service of New Mexico (PNM) has applied to the Bureau of Land Management (BLM) for an amendment to an existing right-of-way in order to upgrade a 115 kV transmission electrical transmission line and widen the existing right-of-way; and for authorization to include fiber optic line with the new transmission line. The transmission line upgrade with the new fiber optic line would cross public lands managed by the BLM northwest of Santa Fe, New Mexico. The upgraded transmission line and fiber optic line on public lands managed by BLM are part of a larger proposal to upgrade and enhance the electrical transmission system for the cities of Santa Fe and Las Vegas, New Mexico.

PNM's technical studies show that the existing transmission line system serving the area is reaching the limits of its load capacity, which would leave the area vulnerable to electrical system problems if there were a loss of a transmission line or other critical piece of equipment. Without this transmission line upgrade, studies have indicated that the Santa Fe/Las Vegas electrical system could experience serious problems as early as winter 2003-2004. With the increased loads that are expected on the system over the next several years, the risk of problems will also increase.

The BLM portion of the project lies in the Buckman area northwest of Santa Fe, originating at PNM's existing Norton substation and continuing south and southeast, utilizing either of two existing power line corridors, for approximately 5.5 miles to the BLM boundary. Outside of the BLM boundary, the power line with fiber optic line will continue across private lands and lands under the jurisdictions of the City of Santa Fe, Santa Fe County, and the State of New Mexico.

Decision to Be Made: The BLM only has the authority to make decisions regarding lands and resources managed by the BLM. Therefore, the decision to be made by BLM is whether or not the BLM will (1) Authorize an amendment to the existing right-of-way to accommodate upgrades to the 115 kV transmission line and widening of the right-of-way, and (2) Authorize addition of fiber optic line to the transmission line corridor. The decision will also address the location of and conditions under which these activities would be authorized.

The Environmental Assessment (EA) prepared for this project as required by the National Environmental Policy Act of 1969 (NEPA) provides the analytical basis for BLM to make a decision for BLM lands and resources. The EA will also provide important information to PNM, the City of Santa Fe, Santa Fe County, the State of New Mexico, and private citizens for making subsequent decisions regarding routes and facilities on lands within their jurisdictions and ownership.

Actions Connected to the Proposal Outside of this BLM Decision: Actions connected to this proposal but outside BLM's jurisdiction include determining the route of the 115 kV transmission line and fiber optic cable replacing poles and lines, widening the right-of-way in some areas, and retro-fitting or constructing a new switching station. PNM has stated that they will continue to work with the other jurisdictional entities and private citizens to make decision regarding these potential activities.

Finding of No Significant Impacts: A thorough analysis of environmental impacts has been conducted and those impacts have been disclosed in the EA. Based on the analysis of the environmental assessment, I have determined that the potential impacts of the proposed action are not expected to be significant and an environmental impact statement is not required.

Public and Agency Review and Comment:

Comments from the Village of Agua Fria Planning Committee and the Agua Fria Village Association meeting held on May 3, 2004.

Results were:

8 individuals preferred Option A

4 individuals preferred Option S

1 individual opposed Option A

1 individual opposed Option O

7 individuals indicated there should not be a switching station or substation in Agua Fria

Letter from Department of Game and Fish

- provided recommendations to minimize or eliminate impacts to wildlife (these included 2003 powerline project guidelines and 2003 trenching guidelines)

Letter from Warren Thompson, president of one of the general partners of Rancho Viejo Limited Partnership. Addressed to PNM, in response to their request for an easement for the powerline. Concerns with:

- visual impact on the current natural grassland landscape;
- possible negative impact to future development of their property;
- would require lines be buried at no expense to the Partnership and at a location acceptable to the Partnership;
- urge PNM to use other, already existing corridors;

Letter from Isaac Pino, Vice President and General Manager Rancho Viejo de Santa Fe Inc. Exact same letter as above, same concerns.

Comment from William H. Mee.

As a resident of and public servant of the Village of Agua Fria, citizens want:

- respect of the Traditional Historic Community boundaries;
- preservation of Cultural Land Use Patterns;
- prohibition of substations or switching stations in residential areas; and
- scenic preservation of the village.

Decision: It is my decision to select both action alternatives (BLM portions of alternatives A, F, O, and S) for potential implementation. While I am authorizing either of the two routes on BLM to be authorized, only one route on BLM lands will ultimately be used. Once a route off BLM lands has been selected, the BLM will review and authorize PNM's updated applications for that connected route across BLM lands. Therefore, BLM will authorize upgrades to the 115 kV transmission line, addition of fiber optic cable, and widening of the existing right-of-way for one of the two routes across BLM lands. I understand that PNM has committed to continue working with private citizens, the City of Santa Fe, Santa Fe County, and the State of New Mexico to identify the best possible route across those jurisdictions.

A map showing the two routes on BLM lands is provided on Map 2-1 in the attached EA.

Rationale for Decision: My decision to authorize these activities is based on the following rationale:

- The activities within the selected alternatives are in conformance with the Taos Resource Management Plan (1988) and BLM policy and guidance.
- The major resource issues identified through BLM interdisciplinary review have been addressed in the analysis and considered in the decision. Based on the analysis in the EA, the impacts of the activities to be authorized are not expected to be significant.
- There are no adverse impacts to federally listed threatened or endangered plant or animal species or to cultural resources.
- This project is planned and designed to address current and future critical electrical transmission reliability and capacity problems for the cities of Santa Fe and Las Vegas. Preparation of the EA and this first phase decision by BLM facilitates continued discussion and planning for routing the line off BLM lands. In addition, this BLM decision allows the other jurisdictions to move forward in their analysis of routes without precluding selection of any of the four routes in their jurisdictions that are analyzed in detail in the EA.

Additional Information:

A discussion of rangeland resources and grazing was inadvertently omitted from the EA sent out for public review and comment. That discussion has been incorporated into the final EA that is available with the Decision Record and FONSI. The possible effects on rangeland resources and grazing from implementation of all action alternatives are similar or the same.

This Decision pertains to BLM lands and resources only. The EA has been prepared to facilitate its use by the City of Santa Fe, Santa Fe County, State Land Office, and PNM in

determining where, how and when the transmission facilities should be continued onto non-BLM lands.

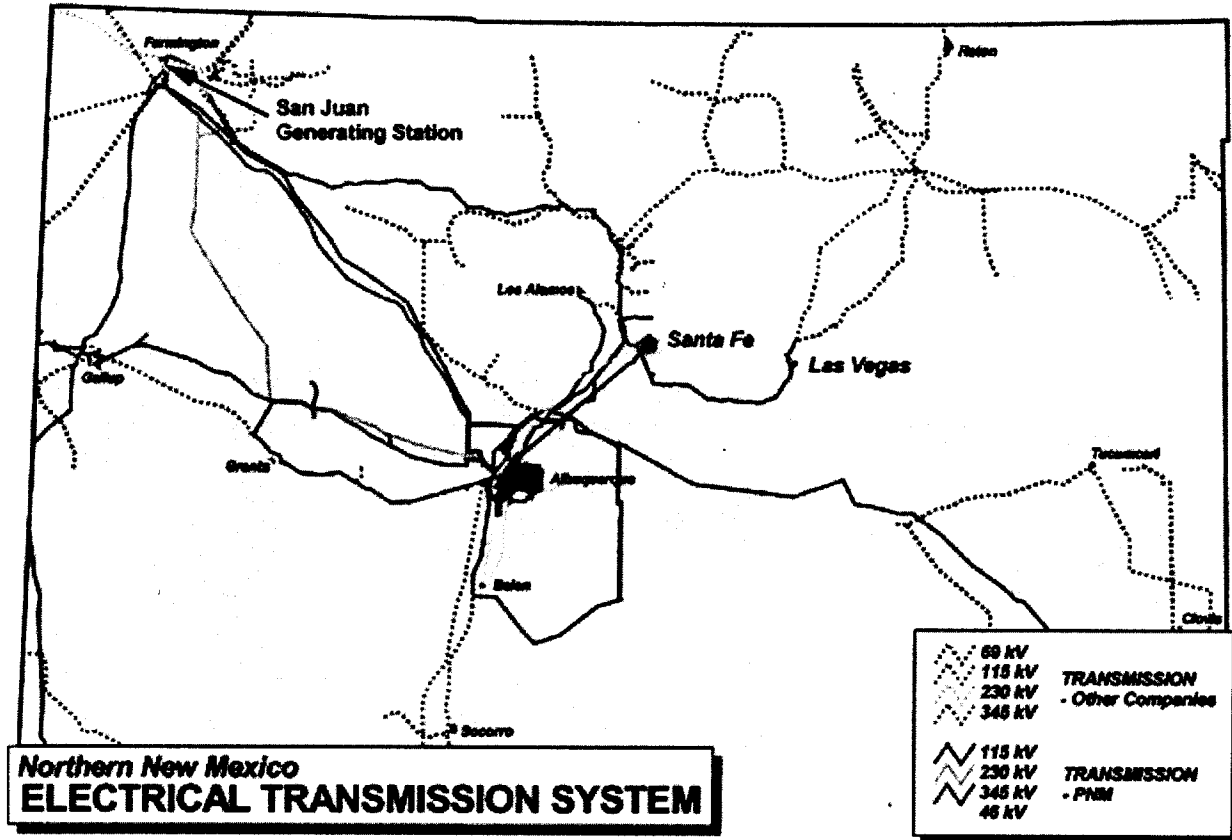
If you wish to obtain a paper copy of the final EA, please contact Lora Yonemoto, Taos Field Office, 226 Cruz Alta Rd., Taos, NM 87571, or at (505) 751-4709.



Sam DesGeorges
Acting Taos Field Office Manager

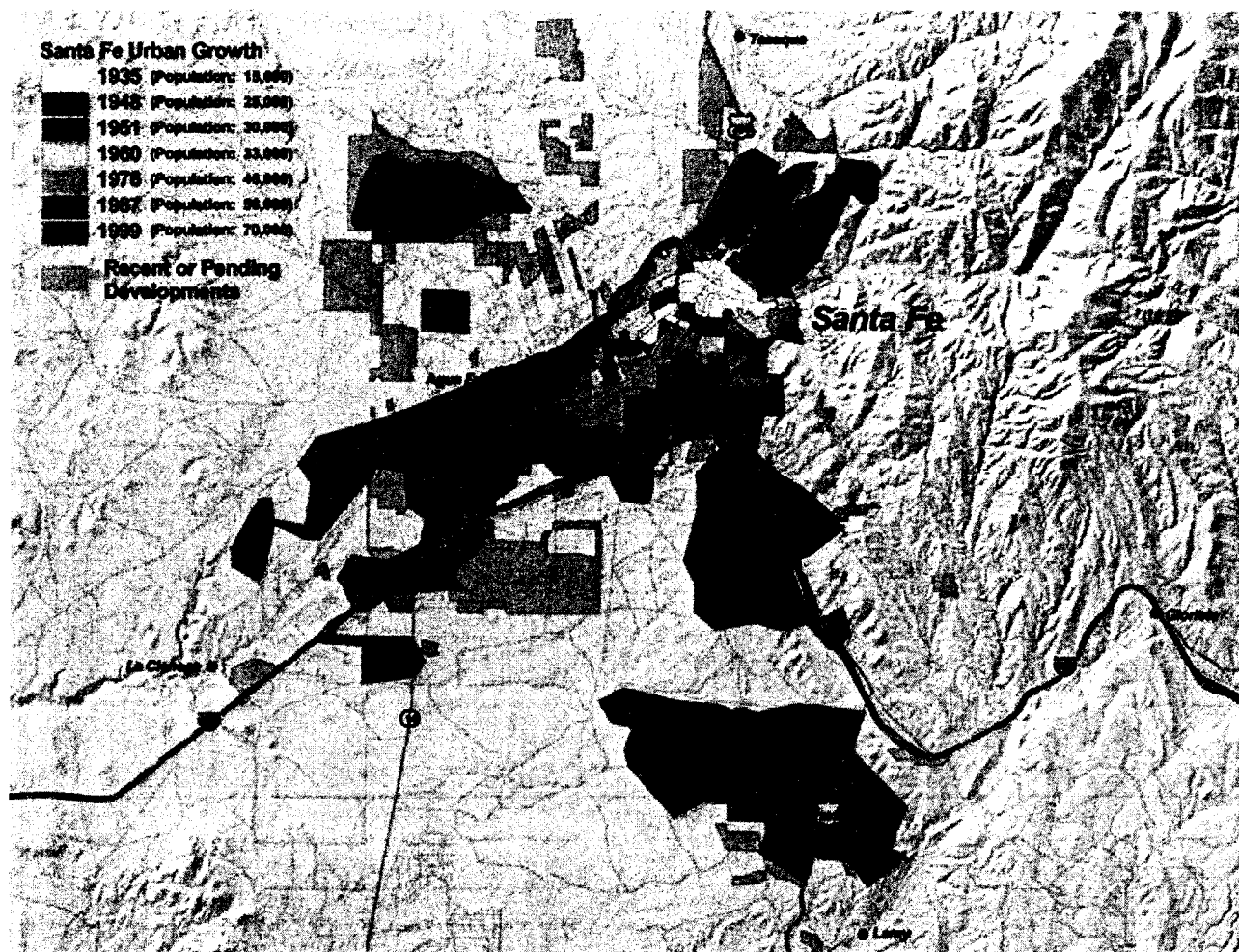
6/3/2004

Date



The Santa Fe and Las Vegas area is served by three high-voltage transmission lines, which are rated to carry 115,000 volts (115 kilovolts [kV]).

[return to Resource Library](#)



Generally speaking, customer demand on the system, measured in "megawatts," has grown substantially in recent years.

[return to Resource Library](#)

Bureau of Land Management

Home > Albuquerque FO > New Mexico Products Pipeline

New Mexico Products Pipeline Environmental Impact Statement



Shell Pipeline Company ("Shell") is proposing to build and operate a refined petroleum products pipeline system from Odessa, Texas to Bloomfield, New Mexico. Shell estimates that the pipeline, known as the New Mexico Products Pipeline ("NMPP"), will deliver 30,000 to 40,000 barrels per day of refined petroleum products via a continuous interstate pipeline system from the Odessa, Texas area to markets in central and northwestern New Mexico. This pipeline system will expand the nation's refined products distribution network to provide valuable service and supplies to New Mexico for future years.

The NMPP will primarily utilize Shell's existing, currently permitted 406-mile, 16-inch diameter pipeline from Jal, New Mexico to a point 18 miles south of Bisti, New Mexico. The existing pipeline will be supplemented by two additional 16-inch segments: (1) from an existing pipeline and distribution terminal in Odessa, Texas to Jal (approximately 62 miles, most of which is along already disturbed, existing rights of ways, and 3 miles of which cross BLM lands) and (2) from the Bisti Connection to an existing truck loading terminal at Bloomfield, New Mexico (approximately 32 miles, most of which is along already disturbed, existing rights of way, and 30 miles of which cross BLM lands). Shell will use a temporary 75-foot wide strip, along the right of way, for construction purposes. The right of way will revert to a permanent 50-foot wide strip following construction.

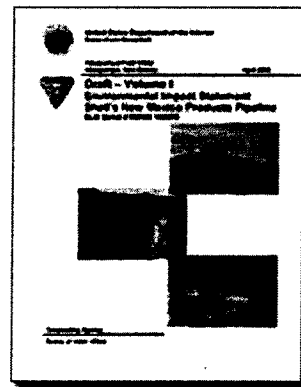
Shell's existing 406-mile pipeline section formerly carried crude oil from the Bisti Connection to Jal. Shell is proposing to reverse the flow direction (with product traveling northwest from Odessa to Bloomfield) and extend the pipeline with the additional sections at either end as described above. Due to the reversal of flow and increased isolation capabilities along the existing pipeline system, there will be 28 new block/check valve sites, seven new, intermediate pump stations (three on BLM lands; approximately 2 acres each), a new pumping and product transfer

Index

- [NEPA Process](#)
- [Public Participation](#)
- [Project Map](#)
- [Documents](#)
- [Que Pasa?](#)
- [Contacts](#)

The Draft Environmental Impact Statement (DEIS) is now available (PDF)

Note: If you have problems downloading this file, right-click on the link and choose "Save Target As" (Internet Explorer) or "Save Link As" (Netscape) to save the document to your hard drive.



Adobe Acrobat Reader may be required to view some of these documents.

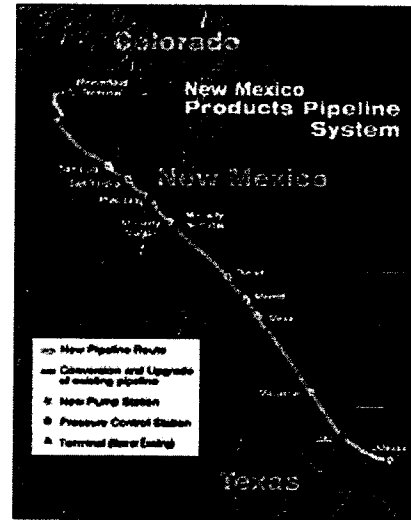
[Download Acrobat Reader for free](#)

These documents contain the exact text, graphics and tables of the original printed documents. Typestyles, margins, page widths and length may vary from the original, printed documents due to document conversion to PDF format.

2/16/06
New segments not in the ROI
AD

facility at Odessa, a new product distribution terminal near Moriarty, New Mexico and two new pressure control stations that would be added at existing facilities, as well as a product delivery metering facility at Bloomfield.

Refined petroleum products (e. g., gasoline, diesel and aviation fuels) will be transported to product distribution terminals in the Albuquerque and Four Corners areas in New Mexico. Transport trucks will load product at the terminals for movement to regional retail outlets. A new distribution terminal will be constructed south of the town of Moriarty. At that terminal, product will be taken from the line, placed into tanks and then loaded into trucks for transportation to the Albuquerque and the Santa Fe areas.



Click map to enlarge

