

# WEST HILLS COMMUNITY COLLEGE DISTRICT

West Hills College Coalinga (HSI)

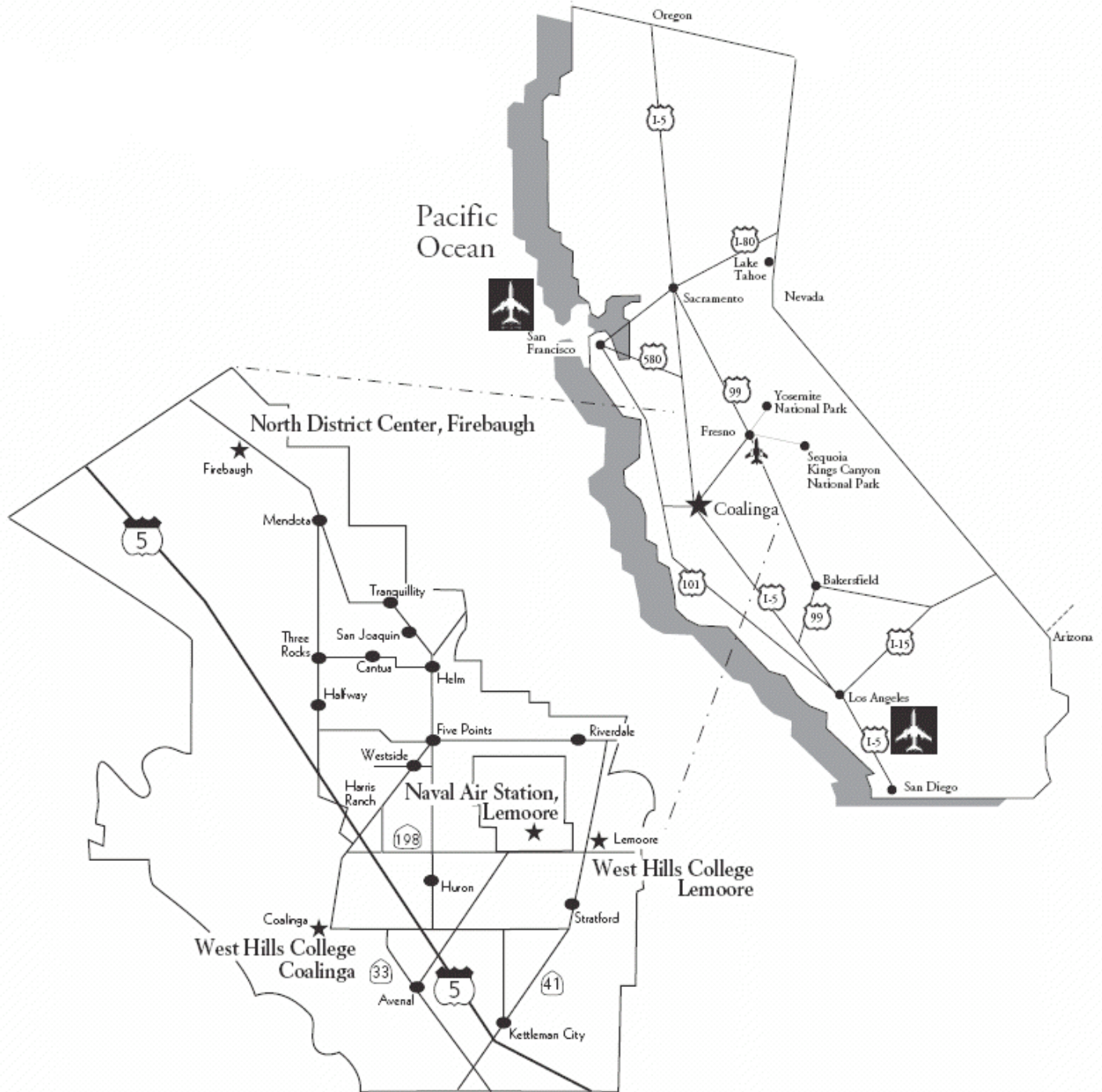
West Hills College Lemoore (HSI)



# Partnerships That Promote STEM Learning

- ▶ University Charter School
- ▶ Middle College High School
- ▶ Farm of the Future







# WHCCD Spring 2007 Enrollment

Full-time	Part-time	Total	% of inc. from Spring 2005
1611	4405	6016	15.6%

# WHCCD Faculty & Staff

▶ Full-time Faculty	87
▶ Part-time Faculty	167
▶ Non Teaching Faculty	12
▶ Administrators	59
▶ Full-time Staff	236
▶ Part-time Staff	<u>28</u>
Total	561





# West Hills College Lemoore







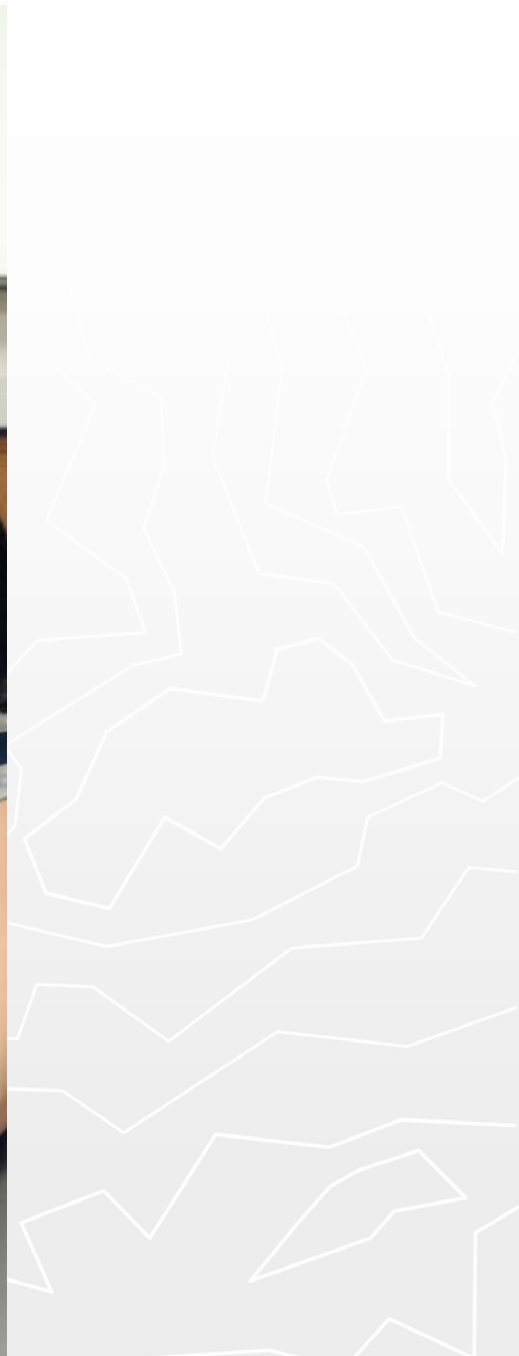
# 200 Building

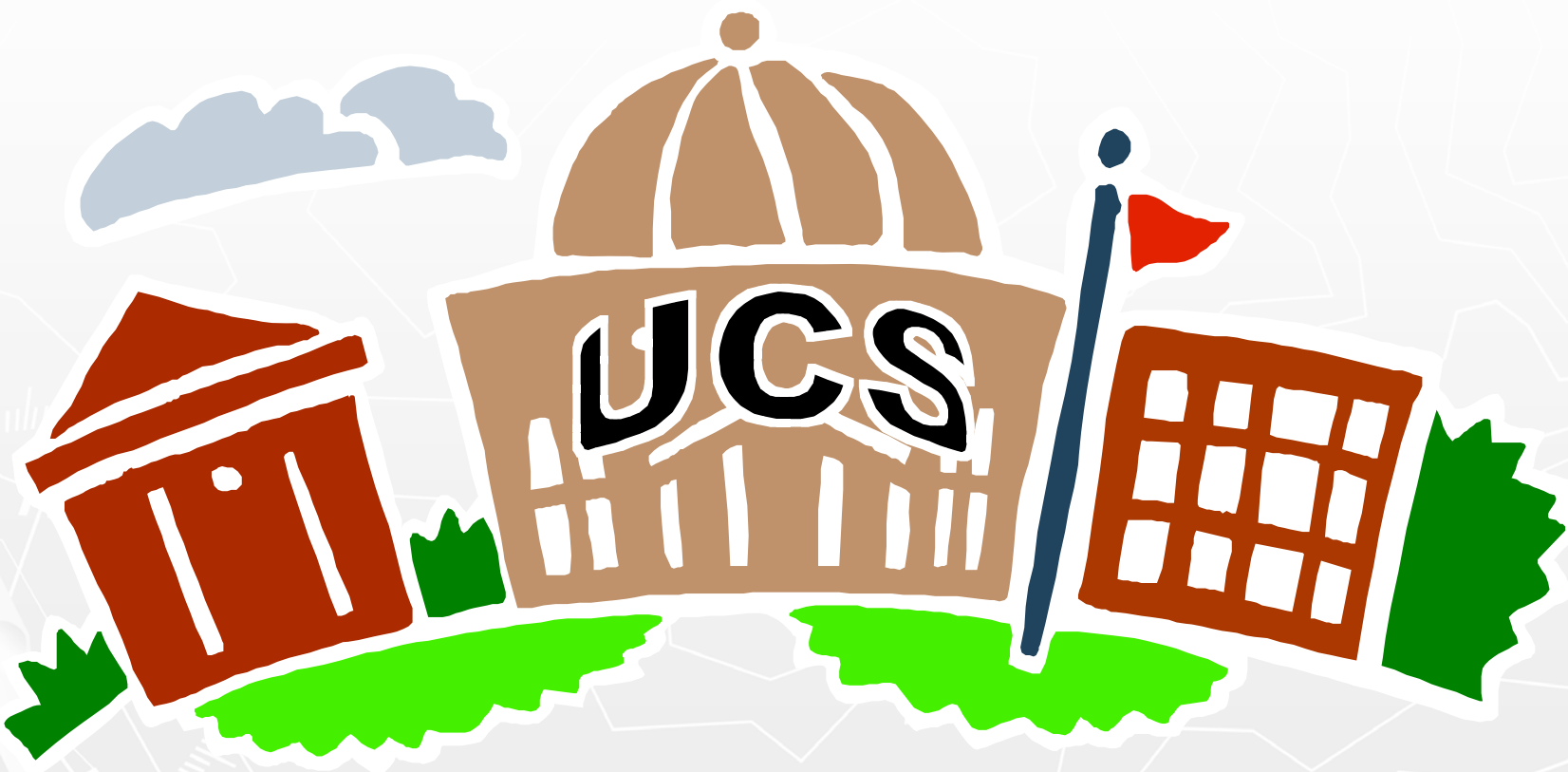


# 200 Building Quad Area







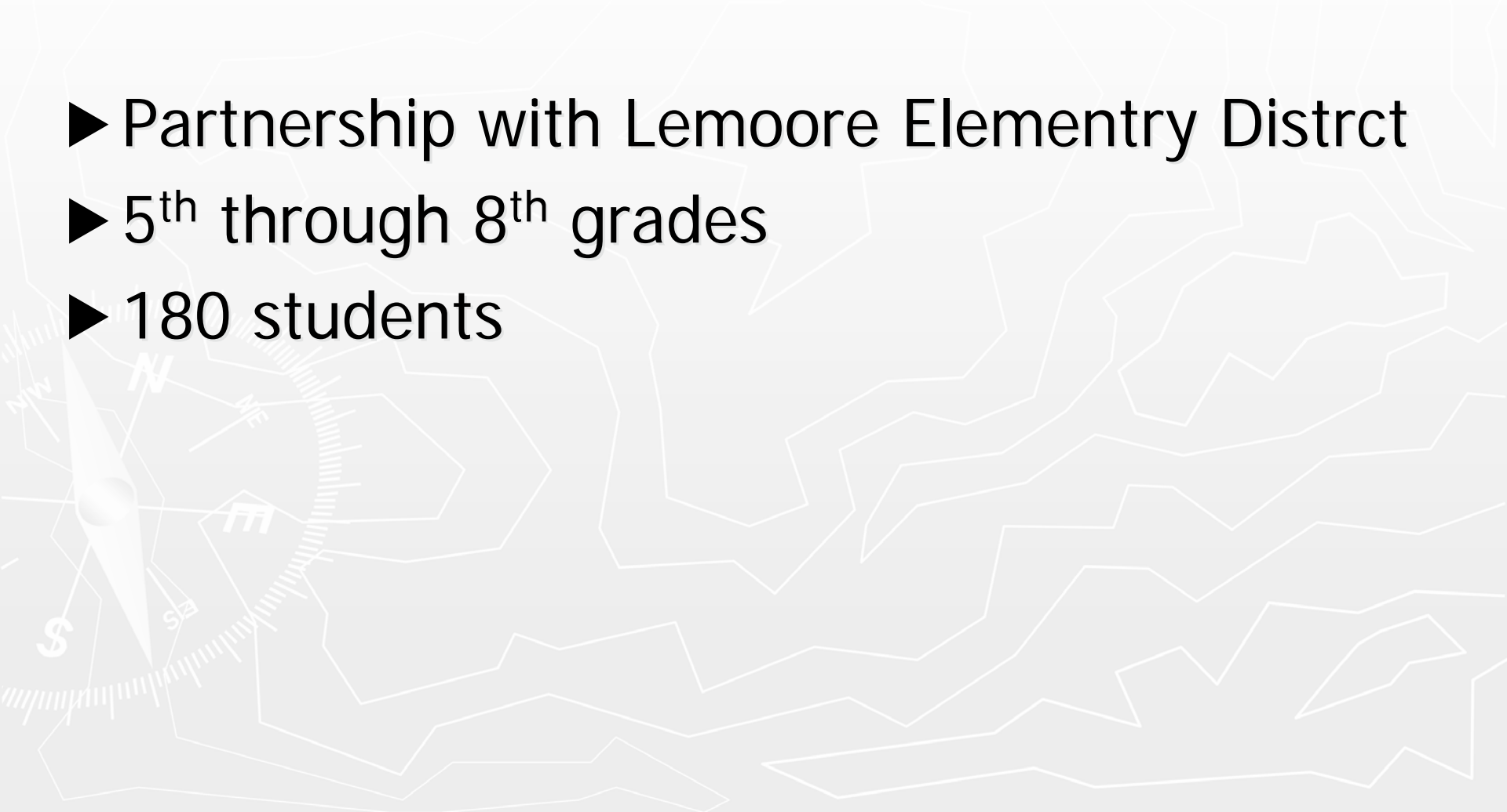


UCS



# University Charter School

- ▶ Partnership with Lemoore Elementary District
- ▶ 5<sup>th</sup> through 8<sup>th</sup> grades
- ▶ 180 students



# UCS Main Campus at WHCL



# West Hills College

## Classes

- ▶ PE-21: Fitness Lab (7)
- ▶ Math 63: Intermediate Algebra (5)
- ▶ Math-25: Intro to Statistics (3)
- ▶ Flspn-1: Foreign Language Spanish (2)
- ▶ Biology 32: Human Anatomy (1)
- ▶ PE-46: Care/Prevention Athletic Injury (1)

# T.E.A.M. Teach Education Practicum

- ▶ Edu 01 – job shadows (20)
- ▶ Edu 05 – Three week project
  - Week 1: Observations and characteristics of adolescent child
  - Week 2: Planning
  - Week 3: Lesson demonstrations



# Paraprofessional Certification and Professional Development

- ▶ Teacher Recruitment and Preparation Programs
  - T.E.A.M. Teach
  - 5 C's Summer Program
- ▶ Student tutors
  - T.E.A.M. Teach students as student aides in UCS classes 10 hours per week.

# Experiential Teacher, Paraprofessional, and Support Staff Training

- ▶ UCS staff plan and implement lesson plans with WHCL students
- ▶ WHCL students present lessons to UCS students
- ▶ UCS staff mentors to WHCL students

# On-site Professional Development Opportunities

- ▶ WHCL flex- and duty- days
- ▶ Ongoing in-service opportunities with WHCL staff
- ▶ Committee meeting input
- ▶ Collegiality

# UCS Student Distribution

<b>Ethnicity</b>	<b>Male</b>	<b>Female</b>
<b>American Indian or Alaska Native</b>	<b>1</b>	<b>2</b>
<b>Asian</b>	<b>0</b>	<b>1</b>
<b>Pacific Islander</b>	<b>0</b>	<b>2</b>
<b>Filipino</b>	<b>4</b>	<b>4</b>
<b>Hispanic or Latino</b>	<b>21</b>	<b>40</b>
<b>Black or African American</b>	<b>8</b>	<b>6</b>
<b>White (non Hispanic)</b>	<b>43</b>	<b>46</b>
<b>Decline to State</b>	<b>1</b>	<b>1</b>
<b>Total</b>	<b>78</b>	<b>102</b>



# Programs

Free and Reduced Lunch	73 out of 180 41%
Gifted and Talented Education	30 out of 180 17%
English Language Learner	15 out of 180 8%
Migrant	6 out of 180 3%



University Charter School

## West Hills College Lemoore

The background of the slide is a light gray topographic map with white contour lines. In the bottom-left corner, there is a white compass rose with a needle pointing towards the top-left. The cardinal directions are labeled with letters: 'N' for North, 'S' for South, 'E' for East, and 'W' for West. There are also some smaller, less distinct letters like 'NW', 'SE', and 'SW' visible.

West Hills College Lemoore

Middle College High School

# Middle College High School

- ▶ Partnership with Lemoore High School
- ▶ Calif. Chancellors Office grant -\$136,000 per year for five years
- ▶ 9-11 grades – 12 grade beginning in fall
- ▶ 70 students
- ▶ High School core classes in morning, college classes in afternoon
- ▶ When students graduate HS, only need one more year of college courses for associates degree

# West Hills College Coalinga

## Farm of the Future





KEITH SCRIVNER



WEST HILLS  
COMMUNITY  
COLLEGE



# West Hills College - Coalinga

## ► Areas Of Study

- 19 AA Degrees
- 9 AS Degrees
- 9 Certificates

► 46% of Agriculture Students are Latino

Coalinga

Ethnicity	Spring 2005	
AmInd	14	0.9%
Asian	55	3.6%
Black	119	7.8%
Filipino	14	0.9%
Latino	685	44.8%
Pacific Islander	13	0.9%
White	556	36.4%
Other	10	0.7%
Unknown	63	4.1%
<b>Total</b>	<b>1,529</b>	

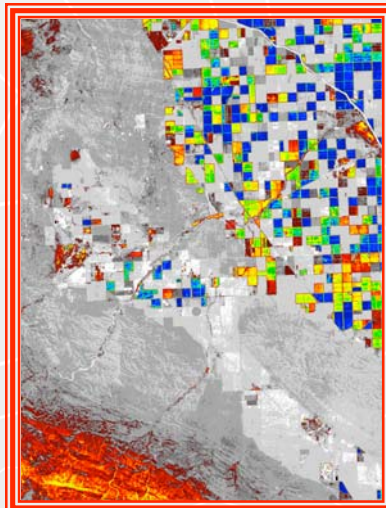
	Economically Disadvantaged (%)	English Language Learners (%)
Firebaugh High	78.3	23.5
Mendota High	80.1	60.7
Coalinga High	48.1	16.4
Riverdale High	69.5	29.4
Tranquillity High	89.7	59.9
Avenal High	100	37.1
Lemoore High	29.6	2.6



# Farm of the Future



- ▶ 850 Acre Farm
  - Almonds
  - Pistachio
  - Range-Cattle
  - Hay
  - Winter Vegetables
- ▶ + \$4 Million Equipment /Tech
- ▶ Areas of Emphasis
  - GPS/GIS
  - Tractor Guidance
  - Remote Sensing
  - Variable Rate Technology
- ▶ To Promote
  - Higher Yields
  - Lower Production Costs
  - Protect Environment





# History

- ▶ Began as partnership with Cal Poly San Luis Obispo, CSU Fresno, and WHC Coalinga
- ▶ 6 USDA Grants Worth \$800,000
- ▶ 4 Calif. Chancellors Office Grants \$800,000
- ▶ Recruiting
  - 64 High Schools
    - ▶ Calexico to Tulelake
  - 12 Hands-On Field Days
  - 9,500 Students



# Equipment Partners

## ► Equipment Partners

- Local John Deere
- TOPCON Positioning
- In-Time
- Green Giant Fresh

## ► Other Partners

- Allen Farms
- Harris Farms
- Western Farm Service
- Wilbur Ellis Comp.
- Precision Agri-Labs
- Britz Fertilizers
- Beeline
- Trimble
- Granit Construction





# Contact Info

## ▶ Don Warkentin

- President West Hills College Lemoore
- [donwarkentin@westhillscollege.com](mailto:donwarkentin@westhillscollege.com)
- (559) 925- 3217

## ▶ Dr. Ron Meade

- Superintendent Lemoore Union Elementary
- [rmeade@luesd.k12.ca.us](mailto:rmeade@luesd.k12.ca.us)
- (559) 924-6809

## ▶ Clint Cowden

- Ag. Science and Tech Inst
- [clintcowden@westhillscollege.com](mailto:clintcowden@westhillscollege.com)
- (559) 934-2701

