

Table XV-1
LUNG AND BRONCHUS CANCER (Invasive)

TRENDS IN SEER INCIDENCE^a AND U.S. MORTALITY^b USING THE JOINTPOINT REGRESSION PROGRAM, 1975-2005
WITH UP TO THREE JOINTPOINTS BY RACE AND SEX

		Jointpoint Trend 1		Jointpoint Trend 2		Jointpoint Trend 3		Jointpoint Trend 4		AAPC ^c	
		Years	APC	Years	APC	Years	APC	Years	APC	1996-2005	2001-2005
<u>SEER Cancer Incidence^a</u>											
All Races	Both Sexes	1975-1982	2.5*	1982-1991	1.0*	1991-2005	-0.8*			-0.8*	-0.8*
All Races	Male	1975-1982	1.4*	1982-1991	-0.4	1991-2005	-1.9*			-1.9*	-1.9*
All Races	Female	1975-1982	5.5*	1982-1990	3.5*	1990-1998	1.0*	1998-2005	-0.2	0.1	-0.2
White	Both Sexes	1975-1982	2.5*	1982-1991	1.1*	1991-2005	-0.7*			-0.7*	-0.7*
White	Male	1975-1981	1.5*	1981-1990	-0.2	1990-2005	-1.8*			-1.8*	-1.8*
White	Female	1975-1982	5.6*	1982-1988	4.1*	1988-1997	1.6*	1997-2005	-0.1	0.0	-0.1
Black	Both Sexes	1975-1985	3.2*	1985-2005	-1.0*					-1.0*	-1.0*
Black	Male	1975-1984	3.1*	1984-2003	-1.7*	2003-2005	-9.5			-3.5*	-5.7
Black	Female	1975-1990	4.3*	1990-2005	0.4					0.4	0.4
<u>SEER Delay-Adjusted Incidence^a</u>											
All Races	Both Sexes	1975-1982	2.5*	1982-1991	1.0*	1991-2005	-0.7*			-0.7*	-0.7*
All Races	Male	1975-1982	1.5*	1982-1991	-0.5	1991-2005	-1.8*			-1.8*	-1.8*
All Races	Female	1975-1982	5.6*	1982-1991	3.4*	1991-2005	0.5*			0.5*	0.5*
White	Both Sexes	1975-1982	2.6*	1982-1991	1.1*	1991-2005	-0.6*			-0.6*	-0.6*
White	Male	1975-1981	1.4*	1981-1989	-0.1	1989-2005	-1.6*			-1.6*	-1.6*
White	Female	1975-1982	5.6*	1982-1988	4.1*	1988-1997	1.6*	1997-2005	0.1	0.3	0.1
Black	Both Sexes	1975-1985	3.2*	1985-2005	-0.9*					-0.9*	-0.9*
Black	Male	1975-1984	3.1*	1984-2003	-1.6*	2003-2005	-8.4			-3.2*	-5.1
Black	Female	1975-1990	4.2*	1990-2005	0.6					0.6	0.6
<u>U.S. Cancer Mortality^b</u>											
All Races	Both Sexes	1975-1980	3.0*	1980-1990	1.8*	1990-1995	-0.2	1995-2005	-1.0*	-1.0*	-1.0*
All Races	Male	1975-1982	1.7*	1982-1990	0.5*	1990-1994	-1.3*	1994-2005	-2.0*	-2.0*	-2.0*
All Races	Female	1975-1983	5.8*	1983-1990	4.0*	1990-1995	1.8*	1995-2005	0.1	0.1	0.1
White	Both Sexes	1975-1980	2.9*	1980-1990	1.8*	1990-1995	-0.1	1995-2005	-0.9*	-0.9*	-0.9*
White	Male	1975-1982	1.7*	1982-1991	0.4*	1991-2005	-1.8*			-1.8*	-1.8*
White	Female	1975-1983	5.8*	1983-1990	4.1*	1990-1995	1.9*	1995-2005	0.2*	0.2*	0.2*
Black	Both Sexes	1975-1981	3.5*	1981-1990	1.9*	1990-1995	-0.7*	1995-2005	-1.7*	-1.7*	-1.7*
Black	Male	1975-1981	3.1*	1981-1989	1.6*	1989-1994	-0.9*	1994-2005	-2.8*	-2.8*	-2.8*
Black	Female	1975-1981	6.8*	1981-1992	3.8*	1992-2005	0.3*			0.3*	0.3*

Jointpoint Regression Program Version 3.3.1, April 2008, National Cancer Institute. (<http://srab.cancer.gov/jointpoint/>).

The APC is the Annual Percent Change based on rates age-adjusted to the 2000 US Std Population (19 age groups - Census P25-1130). Trends are from the SEER 9 areas (San Francisco, Connecticut, Detroit, Hawaii, Iowa, New Mexico, Seattle, Utah, and Atlanta).

Trends are from US Mortality Files, National Center for Health Statistics, Centers for Disease Control and Prevention.

The AAPC is the Average Annual Percent Change and is based on the APCs calculated by Jointpoint over the time range of 1975-2005.

The APC/AAPC is significantly different from zero ($p < .05$).

a
b
c
*

Table XV-1a
LUNG AND BRONCHUS CANCER (Invasive)

TRENDS IN SEER INCIDENCE^a AND U.S. MORTALITY^b USING THE JOINTPOINT REGRESSION PROGRAM, 1975-2005
WITH UP TO FOUR JOINTPOINTS BY RACE AND SEX

		Jointpoint Trend 1		Jointpoint Trend 2		Jointpoint Trend 3		Jointpoint Trend 4		Jointpoint Trend 5		AAPC ^c
		Years	APC	Years	APC	Years	APC	Years	APC	Years	APC	2001-2005
<u>SEER Cancer Incidence^a</u>												
All Races	Both Sexes	1975-1982	2.5*	1982-1991	1.0*	1991-2005	-0.8*					-0.8*
All Races	Male	1975-1982	1.4*	1982-1991	-0.4	1991-2005	-1.9*					-1.9*
All Races	Female	1975-1982	5.5*	1982-1990	3.5*	1990-1998	1.0*	1998-2005	-0.2			-0.2
White	Both Sexes	1975-1982	2.5*	1982-1991	1.1*	1991-2005	-0.7*					-0.7*
White	Male	1975-1981	1.5*	1981-1990	-0.2	1990-2005	-1.8*					-1.8*
White	Female	1975-1982	5.6*	1982-1988	4.1*	1988-1997	1.6*	1997-2005	-0.1			-0.1
Black	Both Sexes	1975-1985	3.2*	1985-2005	-1.0*							-1.0*
Black	Male	1975-1984	3.1*	1984-2003	-1.7*	2003-2005	-9.5					-5.7
Black	Female	1975-1990	4.3*	1990-2005	0.4							0.4
<u>SEER Delay-Adjusted Incidence^a</u>												
All Races	Both Sexes	1975-1982	2.5*	1982-1991	1.0*	1991-2005	-0.7*					-0.7*
All Races	Male	1975-1982	1.5*	1982-1991	-0.5	1991-2005	-1.8*					-1.8*
All Races	Female	1975-1982	5.6*	1982-1991	3.4*	1991-2005	0.5*					0.5*
White	Both Sexes	1975-1982	2.6*	1982-1991	1.1*	1991-2005	-0.6*					-0.6*
White	Male	1975-1981	1.4*	1981-1989	-0.1	1989-2005	-1.6*					-1.6*
White	Female	1975-1982	5.6*	1982-1988	4.1*	1988-1997	1.6*	1997-2005	0.1			0.1
Black	Both Sexes	1975-1985	3.2*	1985-2005	-0.9*							-0.9*
Black	Male	1975-1984	3.3*	1984-2005	-1.8*							-1.8*
Black	Female	1975-1990	4.2*	1990-2005	0.6							0.6
<u>U.S. Cancer Mortality^b</u>												
All Races	Both Sexes	1975-1980	3.0*	1980-1990	1.8*	1990-1995	-0.2	1995-2005	-1.0*			-1.0*
All Races	Male	1975-1978	2.5*	1978-1984	1.2*	1984-1990	0.4*	1990-1993	-1.1	1993-2005	-1.9*	-1.9*
All Races	Female	1975-1982	6.0*	1982-1990	4.2*	1990-1995	1.7*	1995-2003	0.3*	2003-2005	-0.9	-0.3
White	Both Sexes	1975-1980	2.9*	1980-1990	1.8*	1990-1995	-0.1	1995-2005	-0.9*			-0.9*
White	Male	1975-1982	1.7*	1982-1991	0.4*	1991-2005	-1.8*					-1.8*
White	Female	1975-1983	5.8*	1983-1990	4.1*	1990-1994	2.1*	1994-2002	0.5*	2002-2005	-0.6	-0.3
Black	Both Sexes	1975-1981	3.5*	1981-1990	1.9*	1990-1995	-0.7*	1995-2005	-1.7*			-1.7*
Black	Male	1975-1977	4.9*	1977-1984	2.3*	1984-1990	1.2*	1990-1994	-1.2*	1994-2005	-2.7*	-2.7*
Black	Female	1975-1981	6.8*	1981-1992	3.8*	1992-2005	0.3*					0.3*

Jointpoint Regression Program Version 3.3.1, April 2008, National Cancer Institute. (<http://srab.cancer.gov/jointpoint/>).

The APC is the Annual Percent Change based on rates age-adjusted to the 2000 US Std Population (19 age groups - Census P25-1130).

Trends are from the SEER 9 areas (San Francisco, Connecticut, Detroit, Hawaii, Iowa, New Mexico, Seattle, Utah, and Atlanta).

Trends are from US Mortality Files, National Center for Health Statistics, Centers for Disease Control and Prevention.

The AAPC is the Average Annual Percent Change and is based on the APCs calculated by Jointpoint over the time range of 1975-2005.

The APC/AAPC is significantly different from zero ($p < .05$).

a
b
c
*

Table XV-2
 SMALL CELL LUNG AND BRONCHUS CANCER (Invasive) AND NON-SMALL CELL LUNG AND BRONCHUS CANCER (Invasive)

TRENDS IN SEER INCIDENCE^a USING THE JOINPOINT REGRESSION PROGRAM, 1975-2005
 WITH UP TO THREE JOINPOINTS BY RACE AND SEX

		Joinpoint Trend 1		Joinpoint Trend 2		Joinpoint Trend 3		Joinpoint Trend 4		AAPC ^b	
		Years	APC	Years	APC	Years	APC	Years	APC	1996-2005	2001-2005
<u>SEER Cancer Incidence for Small Cell Lung and Bronchus^a</u>											
All Races	Both Sexes	1975-1982	6.1*	1982-1989	1.3*	1989-2005	-2.4*			-2.4*	-2.4*
All Races	Male	1975-1981	5.5*	1981-1988	0.2	1988-2005	-3.3*			-3.3*	-3.3*
All Races	Female	1975-1982	9.6*	1982-1991	3.0*	1991-2005	-1.7*			-1.7*	-1.7*
White	Both Sexes	1975-1982	6.3*	1982-1989	1.4*	1989-2005	-2.2*			-2.2*	-2.2*
White	Male	1975-1980	6.2*	1980-1988	0.5	1988-2005	-3.3*			-3.3*	-3.3*
White	Female	1975-1982	10.2*	1982-1991	3.0*	1991-2005	-1.5*			-1.5*	-1.5*
Black	Both Sexes	1975-1986	4.7*	1986-2005	-2.3*					-2.3*	-2.3*
Black	Male	1975-1986	4.2*	1986-2005	-3.7*					-3.7*	-3.7*
Black	Female	1975-1991	4.4*	1991-2005	-1.6					-1.6	-1.6
<u>SEER Cancer Incidence for Non-Small Cell Lung and Bronchus^a</u>											
All Races	Both Sexes	1975-1991	1.3*	1991-2005	-0.6*					-0.6*	-0.6*
All Races	Male	1975-1982	0.9*	1982-1992	-0.4	1992-2005	-1.7*			-1.7*	-1.7*
All Races	Female	1975-1988	4.3*	1988-1997	1.7*	1997-2005	0.2			0.4*	0.2
White	Both Sexes	1975-1991	1.4*	1991-2005	-0.5*					-0.5*	-0.5*
White	Male	1975-1989	0.2	1989-2005	-1.5*					-1.5*	-1.5*
White	Female	1975-1988	4.4*	1988-1997	1.9*	1997-2005	0.2			0.4*	0.2
Black	Both Sexes	1975-1985	3.0*	1985-2005	-0.8*					-0.8*	-0.8*
Black	Male	1975-1984	2.9*	1984-2003	-1.5*	2003-2005	-9.4			-3.3*	-5.5
Black	Female	1975-1990	4.2*	1990-2005	0.7*					0.7*	0.7*

Joinpoint Regression Program Version 3.3.1, April 2008, National Cancer Institute. (<http://srab.cancer.gov/joinpoint/>).
 The APC is the Annual Percent Change based on rates age-adjusted to the 2000 US Std Population (19 age groups - Census P25-1130).
 Trends are from the SEER 9 areas (San Francisco, Connecticut, Detroit, Hawaii, Iowa, New Mexico, Seattle, Utah, and Atlanta).
 The AAPC is the Average Annual Percent Change and is based on the APCs calculated by Joinpoint over the time range of 1975-2005.
 The APC/AAPC is significantly different from zero ($p < .05$).

a
b
*

Table XV-2a
 SMALL CELL LUNG AND BRONCHUS CANCER (Invasive) AND NON-SMALL CELL LUNG AND BRONCHUS CANCER (Invasive)

TRENDS IN SEER INCIDENCE^a USING THE JOINTPOINT REGRESSION PROGRAM, 1975-2005
 WITH UP TO FOUR JOINTPOINTS BY RACE AND SEX

		Joinpoint Trend 1		Joinpoint Trend 2		Joinpoint Trend 3		Joinpoint Trend 4		Joinpoint Trend 5		AAPC ^c
		Years	APC	Years	APC	Years	APC	Years	APC	Years	APC	2001-2005
<u>SEER Cancer Incidence for Small Cell Lung and Bronchus^a</u>												
All Races	Both Sexes	1975-1982	6.1*	1982-1989	1.3*	1989-2005	-2.4*					-2.4*
All Races	Male	1975-1981	5.5*	1981-1988	0.2	1988-2005	-3.3*					-3.3*
All Races	Female	1975-1982	9.6*	1982-1991	3.0*	1991-2005	-1.7*					-1.7*
White	Both Sexes	1975-1982	6.3*	1982-1989	1.4*	1989-2005	-2.2*					-2.2*
White	Male	1975-1980	6.2*	1980-1988	0.5	1988-2005	-3.3*					-3.3*
White	Female	1975-1982	10.2*	1982-1991	3.0*	1991-2005	-1.5*					-1.5*
Black	Both Sexes	1975-1986	4.7*	1986-2005	-2.3*							-2.3*
Black	Male	1975-1986	4.2*	1986-2005	-3.7*							-3.7*
Black	Female	1975-1991	4.4*	1991-2005	-1.6							-1.6
<u>SEER Cancer Incidence for Non-Small Cell Lung and Bronchus^a</u>												
All Races	Both Sexes	1975-1991	1.3*	1991-2005	-0.6*							-0.6*
All Races	Male	1975-1982	0.9*	1982-1992	-0.4	1992-2005	-1.7*					-1.7*
All Races	Female	1975-1988	4.3*	1988-1997	1.7*	1997-2005	0.2					0.2
White	Both Sexes	1975-1991	1.4*	1991-2005	-0.5*							-0.5*
White	Male	1975-1989	0.2	1989-2005	-1.5*							-1.5*
White	Female	1975-1988	4.4*	1988-1997	1.9*	1997-2005	0.2					0.2
Black	Both Sexes	1975-1985	3.0*	1985-2005	-0.8*							-0.8*
Black	Male	1975-1984	2.9*	1984-2003	-1.5*	2003-2005	-9.4					-5.5
Black	Female	1975-1990	4.2*	1990-2005	0.7*							0.7*

Joinpoint Regression Program Version 3.3.1, April 2008, National Cancer Institute. (<http://srab.cancer.gov/joinpoint/>).

The APC is the Annual Percent Change based on rates age-adjusted to the 2000 US Std Population (19 age groups - Census P25-1130).

Trends are from the SEER 9 areas (San Francisco, Connecticut, Detroit, Hawaii, Iowa, New Mexico, Seattle, Utah, and Atlanta).

The AAPC is the Average Annual Percent Change and is based on the APCs calculated by Joinpoint over the time range of 1975-2005.

The APC/AAPC is significantly different from zero ($p < .05$).

^a
^b
^{*}

Table XV-3
LUNG AND BRONCHUS CANCER (Invasive)

AGE ADJUSTED SEER INCIDENCE^a RATES BY YEAR, RACE AND SEX

	All Races			Whites			Blacks		
	Total	Males	Females	Total	Males	Females	Total	Males	Females
<u>AGE-ADJUSTED RATES</u>									
YEAR OF DIAGNOSIS:									
1975	52.3	89.6	24.5	52.0	89.2	24.8	64.6	114.9	24.7
1976	55.4	93.8	27.3	54.6	92.8	27.3	72.3	131.0	28.6
1977	56.7	95.5	28.3	55.9	94.8	28.1	73.6	124.8	33.9
1978	57.8	96.7	29.7	57.3	95.9	29.9	74.5	130.5	31.6
1979	58.6	95.8	31.6	58.0	95.2	31.6	74.5	127.6	34.1
1980	60.7	100.0	32.2	59.4	97.7	32.4	86.6	151.5	38.3
1981	62.0	99.4	35.1	61.6	98.5	35.5	82.2	143.0	37.2
1982	63.3	100.7	36.7	63.1	99.7	37.7	80.4	141.1	35.7
1983	63.4	99.5	37.9	63.0	97.7	39.1	86.6	151.3	39.5
1984	65.5	102.1	39.5	64.4	100.0	39.6	93.1	159.2	44.8
1985	64.6	98.7	40.2	64.0	96.9	40.9	89.6	149.7	46.0
1986	65.8	99.1	42.3	65.2	97.4	42.9	93.0	156.4	48.7
1987	67.9	101.5	44.1	68.1	100.6	45.5	84.8	143.7	43.2
1988	68.0	98.7	46.3	68.2	97.9	47.7	88.1	144.9	48.1
1989	67.5	97.9	46.1	67.6	97.0	47.2	89.0	142.8	51.4
1990	68.0	96.9	47.7	68.2	96.1	48.9	86.7	137.0	52.0
1991	69.2	97.3	49.6	69.0	95.9	50.6	93.2	145.0	56.9
1992	69.4	97.2	49.8	68.9	94.8	51.1	94.0	149.0	55.9
1993	67.8	93.9	49.2	67.8	92.5	50.7	86.3	135.4	52.4
1994	67.1	90.9	50.5	67.2	90.1	51.6	86.9	131.1	56.2
1995	66.8	89.7	50.4	67.1	87.9	52.4	85.6	138.5	50.0
1996	66.4	87.9	51.1	66.7	86.7	52.9	84.1	128.3	55.1
1997	66.6	86.2	52.5	67.2	84.8	54.9	82.0	129.3	50.3
1998	67.5	87.9	52.9	68.0	86.5	55.0	87.0	130.5	57.7
1999	65.8	84.5	52.4	66.3	83.3	54.4	84.3	121.7	58.8
2000	64.0	81.9	51.1	64.6	80.6	53.2	79.2	113.0	56.6
2001	63.9	80.9	51.5	64.8	80.6	53.4	79.7	113.3	56.9
2002	63.6	79.8	52.1	64.4	79.3	53.9	80.6	111.6	60.1
2003	64.1	80.1	52.6	64.9	78.8	55.2	79.6	116.9	54.5
2004	61.3	74.9	51.3	62.0	74.2	53.2	73.8	101.5	55.3
2005	61.0	73.2	52.2	61.9	73.0	54.0	72.2	94.2	57.6
1975-2005	64.3	91.1	44.8	64.3	90.1	45.8	82.7	130.4	49.2

^a SEER 9 areas (San Francisco, Connecticut, Detroit, Hawaii, Iowa, New Mexico, Seattle, Utah, and Atlanta). Rates are per 100,000 and are age-adjusted to the 2000 US Std Population (19 age groups - Census P25-1130).

- Statistic not shown. Rate based on less than 16 cases for the time interval.

Table XV-4
 SMALL CELL LUNG AND BRONCHUS CANCER (Invasive)

AGE ADJUSTED SEER INCIDENCE^a RATES BY YEAR, RACE AND SEX

	All Races			Whites			Blacks		
	Total	Males	Females	Total	Males	Females	Total	Males	Females
<u>AGE-ADJUSTED RATES</u>									
YEAR OF DIAGNOSIS:									
1975	6.6	10.4	3.8	6.9	10.7	4.0	5.9	8.9	3.5
1976	7.1	11.4	3.8	7.1	11.5	3.9	8.2	12.8	4.8
1977	7.7	12.4	4.2	7.8	12.8	4.2	8.1	11.2	5.8
1978	8.6	13.4	5.0	8.9	13.7	5.3	7.8	13.9	3.1
1979	8.7	13.1	5.4	9.0	13.6	5.6	7.6	11.8	4.5
1980	9.1	14.2	5.2	9.3	14.4	5.5	10.0	17.5	4.4
1981	9.7	14.5	6.1	10.0	14.8	6.5	9.2	15.9	4.2
1982	10.4	14.9	7.1	10.7	15.3	7.6	9.6	15.9	4.9
1983	10.4	14.9	7.1	10.7	15.0	7.6	9.1	15.1	4.9
1984	10.7	15.2	7.4	11.0	15.6	7.8	10.4	15.0	6.9
1985	10.4	15.0	7.1	10.8	15.3	7.5	11.1	17.8	6.3
1986	11.2	15.5	8.0	11.5	16.0	8.3	12.3	17.7	8.4
1987	10.6	14.1	8.2	11.2	14.6	8.8	9.5	14.5	6.0
1988	11.4	15.3	8.5	11.9	15.6	9.2	10.5	17.9	5.3
1989	11.2	14.8	8.7	11.7	15.2	9.2	12.1	17.7	8.4
1990	10.7	13.8	8.4	11.3	14.5	9.1	9.4	13.7	6.2
1991	11.3	14.0	9.3	11.7	14.3	9.8	12.4	16.0	10.0
1992	10.5	13.4	8.4	11.0	13.8	9.0	10.2	13.4	8.0
1993	10.0	12.3	8.3	10.5	12.6	8.9	9.4	13.2	6.7
1994	9.8	11.7	8.4	10.2	12.0	9.1	9.9	13.6	7.4
1995	9.8	12.2	8.1	10.4	12.6	8.8	9.4	13.7	6.6
1996	9.7	12.1	8.0	10.3	12.4	8.6	8.8	12.0	6.8
1997	9.5	10.9	8.6	10.1	11.1	9.5	7.9	10.8	6.1
1998	9.3	10.8	8.1	9.9	11.3	8.8	9.4	12.1	7.4
1999	8.8	10.0	8.0	9.3	10.2	8.8	8.1	10.9	6.0
2000	8.8	10.4	7.6	9.2	10.8	8.1	9.4	11.5	7.9
2001	8.3	9.8	7.3	8.9	10.2	7.9	8.4	10.8	6.8
2002	8.2	9.3	7.5	8.9	9.8	8.3	7.2	9.7	5.7
2003	8.1	9.0	7.5	8.6	9.3	8.2	7.9	9.5	6.7
2004	8.0	8.8	7.4	8.4	9.1	7.9	8.5	9.7	7.7
2005	7.4	8.4	6.7	8.0	9.0	7.4	6.5	7.4	5.8
1975-2005	9.4	12.2	7.3	9.9	12.7	7.8	9.1	13.0	6.4

^a SEER 9 areas (San Francisco, Connecticut, Detroit, Hawaii, Iowa, New Mexico, Seattle, Utah, and Atlanta). Rates are per 100,000 and are age-adjusted to the 2000 US Std Population (19 age groups - Census P25-1130).
 - Statistic not shown. Rate based on less than 16 cases for the time interval.

Table XV-5
 NON-SMALL CELL LUNG AND BRONCHUS CANCER (Invasive)

AGE ADJUSTED SEER INCIDENCE^a RATES BY YEAR, RACE AND SEX

	All Races			Whites			Blacks		
	Total	Males	Females	Total	Males	Females	Total	Males	Females
<u>AGE-ADJUSTED RATES</u>									
YEAR OF DIAGNOSIS:									
1975	45.6	79.2	20.7	45.1	78.5	20.9	58.7	106.0	21.2
1976	48.4	82.5	23.5	47.5	81.3	23.4	64.1	118.2	23.9
1977	49.0	83.1	24.1	48.0	82.0	23.8	65.4	113.6	28.1
1978	49.2	83.3	24.6	48.4	82.2	24.6	66.7	116.6	28.5
1979	49.9	82.7	26.2	49.0	81.6	26.0	66.9	115.8	29.6
1980	51.6	85.8	27.0	50.1	83.3	26.8	76.7	133.9	33.9
1981	52.3	84.9	29.0	51.5	83.6	29.1	73.0	127.1	33.0
1982	52.9	85.8	29.6	52.3	84.4	30.2	70.7	125.1	30.8
1983	53.1	84.6	30.8	52.3	82.6	31.5	77.5	136.3	34.6
1984	54.8	86.9	32.0	53.3	84.3	31.9	82.6	144.2	38.0
1985	54.2	83.7	33.1	53.2	81.7	33.4	78.5	131.9	39.8
1986	54.6	83.5	34.3	53.6	81.4	34.7	80.7	138.7	40.3
1987	57.2	87.4	36.0	56.9	86.1	36.7	75.2	129.2	37.2
1988	56.6	83.4	37.8	56.3	82.3	38.5	77.6	127.1	42.8
1989	56.3	83.1	37.4	55.9	81.8	38.0	77.0	125.1	43.0
1990	57.4	83.1	39.3	56.9	81.7	39.8	77.3	123.3	45.8
1991	57.9	83.3	40.2	57.3	81.6	40.8	80.8	129.0	46.9
1992	58.9	83.8	41.4	57.9	81.0	42.1	83.8	135.5	47.9
1993	57.7	81.6	40.8	57.3	79.9	41.7	76.9	122.1	45.7
1994	57.3	79.2	42.1	57.0	78.1	42.5	76.9	117.5	48.7
1995	56.9	77.5	42.3	56.7	75.3	43.7	76.2	124.8	43.4
1996	56.7	75.9	43.1	56.5	74.2	44.3	75.3	116.3	48.2
1997	57.0	75.4	43.9	57.1	73.7	45.4	74.2	118.4	44.2
1998	58.2	77.1	44.7	58.1	75.3	46.2	77.6	118.4	50.2
1999	57.0	74.5	44.5	56.9	73.0	45.6	76.1	110.8	52.8
2000	55.2	71.5	43.6	55.3	69.8	45.0	69.8	101.4	48.7
2001	55.5	71.1	44.2	56.0	70.3	45.5	71.2	102.6	50.1
2002	55.4	70.5	44.7	55.5	69.5	45.6	73.4	101.8	54.3
2003	56.0	71.1	45.1	56.3	69.5	46.9	71.8	107.5	47.8
2004	53.2	66.0	43.9	53.6	65.1	45.2	65.3	91.8	47.7
2005	53.6	64.8	45.5	53.9	64.0	46.7	65.7	86.8	51.7
1975-2005	54.9	78.8	37.5	54.4	77.5	38.0	73.6	117.5	42.8

^a SEER 9 areas (San Francisco, Connecticut, Detroit, Hawaii, Iowa, New Mexico, Seattle, Utah, and Atlanta). Rates are per 100,000 and are age-adjusted to the 2000 US Std Population (19 age groups - Census P25-1130).

- Statistic not shown. Rate based on less than 16 cases for the time interval.

Table XV-6
LUNG AND BRONCHUS CANCER (Invasive)

AGE-ADJUSTED U.S. DEATH^a RATES BY YEAR, RACE AND SEX

	All Races			Whites			Blacks		
	Total	Males	Females	Total	Males	Females	Total	Males	Females
<u>AGE-ADJUSTED RATES</u>									
YEAR OF DEATH:									
1975	42.6	76.4	17.6	42.1	75.5	17.7	49.3	91.0	17.3
1976	44.2	78.5	19.0	43.7	77.6	19.1	51.1	94.0	18.5
1977	45.5	80.4	20.0	44.8	79.1	20.1	54.6	100.8	19.9
1978	46.9	82.1	21.4	46.3	80.8	21.6	55.3	101.6	20.7
1979	47.7	82.9	22.3	47.1	81.6	22.4	56.4	102.9	22.2
1980	49.4	84.7	24.1	48.8	83.3	24.2	59.2	106.7	24.6
1981	50.0	85.2	24.9	49.3	83.5	25.1	60.6	109.7	25.1
1982	51.4	86.8	26.5	50.8	85.2	26.7	62.3	112.5	26.3
1983	52.4	87.0	28.1	51.7	85.4	28.3	63.7	112.8	28.7
1984	53.4	88.2	28.9	52.6	86.2	29.3	65.1	118.0	28.0
1985	54.3	88.5	30.4	53.7	86.7	30.8	65.8	117.5	29.6
1986	55.0	89.0	31.4	54.4	87.0	31.8	67.0	119.2	31.0
1987	56.2	90.0	32.7	55.6	88.1	33.0	68.6	121.8	32.5
1988	57.0	89.9	34.1	56.4	87.9	34.6	69.2	122.2	33.5
1989	57.9	89.8	35.8	57.2	87.6	36.3	71.0	124.7	34.9
1990	58.9	90.6	36.8	58.2	88.4	37.3	72.1	125.2	36.5
1991	59.0	89.9	37.6	58.4	87.8	38.1	71.6	123.6	37.2
1992	58.9	88.0	38.7	58.3	86.0	39.2	71.4	121.1	38.6
1993	59.1	87.6	39.3	58.7	85.5	40.0	71.1	122.0	37.7
1994	58.5	85.7	39.6	58.2	83.8	40.3	70.2	118.6	38.6
1995	58.4	84.4	40.3	58.1	82.6	41.0	69.3	116.1	38.8
1996	57.9	82.8	40.4	57.7	81.2	41.2	68.3	113.2	39.1
1997	57.5	81.3	40.8	57.3	79.8	41.5	67.9	110.2	40.5
1998	57.1	79.9	41.0	56.9	78.5	41.7	66.9	107.4	40.7
1999	55.4	77.0	40.1	55.3	75.7	40.9	65.0	103.6	40.0
2000	55.8	76.4	41.1	56.0	75.4	42.1	63.8	100.9	39.7
2001	55.3	75.2	41.0	55.5	74.2	42.0	62.6	99.3	38.8
2002	55.0	73.5	41.5	55.3	72.8	42.6	62.2	95.7	40.3
2003	54.1	71.9	41.2	54.5	71.2	42.2	61.1	93.1	40.3
2004	53.3	70.3	40.9	53.7	69.7	41.9	60.1	90.6	40.0
2005	52.8	69.4	40.6	53.2	69.0	41.6	58.8	87.2	40.2
1975-2005	54.4	82.3	34.4	54.1	81.0	34.9	64.1	108.2	34.0

^a US Mortality Files, National Center for Health Statistics, Centers for Disease Control and Prevention. Rates are per 100,000 and are age-adjusted to the 2000 US Std Population (19 age groups - Census P25-1130).

- Statistic not shown. Rate based on less than 16 cases for the time interval.

Table XV-7
LUNG AND BRONCHUS CANCER (Invasive)

SEER INCIDENCE^a AND U.S. DEATH^b RATES, AGE-ADJUSTED AND AGE-SPECIFIC RATES, BY RACE AND SEX

	All Races			Whites			Blacks		
	Total	Males	Females	Total	Males	Females	Total	Males	Females
<u>SEER INCIDENCE</u>									
<u>AGE AT DIAGNOSIS</u>									
AGE-ADJUSTED RATES, 2001-2005									
All ages	63.9	79.4	52.6	65.1	79.3	54.9	76.0	107.6	54.6
Under 65	21.2	24.0	18.6	21.1	23.2	19.1	31.2	41.0	23.1
65 and over	358.7	462.0	287.4	369.4	467.0	302.0	385.6	568.3	272.2
All ages(IARC world std) ^c	40.6	49.0	33.9	41.3	48.8	35.5	50.3	69.7	36.3
AGE-SPECIFIC RATES, 2001-2005									
<1	-	-	-	-	-	-	-	-	-
1-4	-	-	-	-	-	-	-	-	-
5-9	-	-	-	-	-	-	-	-	-
10-14	-	-	-	-	-	-	-	-	-
15-19	0.1	-	0.1	0.1	-	-	-	-	-
20-24	0.3	0.3	0.3	0.3	0.3	0.4	-	-	-
25-29	0.5	0.5	0.6	0.6	0.5	0.6	0.6	-	-
30-34	1.1	1.1	1.2	1.1	1.0	1.2	1.2	1.4	1.0
35-39	3.6	3.4	3.9	3.6	3.2	3.9	4.0	3.5	4.5
40-44	10.9	10.8	11.0	10.6	10.3	11.0	16.8	17.5	16.2
45-49	25.5	26.7	24.2	24.6	25.0	24.1	43.1	51.0	36.2
50-54	51.5	58.5	44.8	49.7	54.9	44.5	85.9	109.8	65.7
55-59	102.3	117.2	88.4	101.4	112.0	91.3	156.6	215.6	107.7
60-64	184.9	217.5	155.1	189.2	216.0	164.3	239.4	332.3	165.2
65-69	283.7	337.5	237.1	294.2	341.8	252.2	330.1	452.2	237.0
70-74	378.8	468.2	307.3	393.8	475.3	327.2	404.7	580.5	281.8
75-79	433.9	559.9	344.2	447.5	566.1	362.2	456.4	672.2	322.8
80-84	408.6	554.0	317.5	415.7	557.1	327.4	423.5	658.2	295.2
85+	294.9	448.1	224.4	296.3	450.1	226.5	302.2	515.5	215.5
<u>U.S. MORTALITY</u>									
<u>AGE AT DEATH</u>									
AGE-ADJUSTED RATES, 2001-2005									
All ages	54.1	72.0	41.0	54.4	71.3	42.0	60.9	93.1	39.9
Under 65	16.9	20.6	13.4	16.6	19.8	13.6	23.3	33.0	15.4
65 and over	311.1	427.4	231.8	315.7	427.8	238.5	321.3	508.4	209.6
All ages(IARC world std) ^c	33.5	43.4	25.7	33.6	42.8	26.3	39.5	58.8	25.8
AGE-SPECIFIC RATES, 2001-2005									
<1	-	-	-	-	-	-	-	-	-
1-4	-	-	-	-	-	-	-	-	-
5-9	-	-	-	-	-	-	-	-	-
10-14	-	-	-	-	-	-	-	-	-
15-19	0.0	0.0	-	0.0	-	-	-	-	-
20-24	0.1	0.1	0.1	0.1	0.1	0.1	-	-	-
25-29	0.2	0.2	0.2	0.2	0.2	0.2	0.2	-	-
30-34	0.6	0.6	0.5	0.6	0.6	0.5	0.6	0.7	0.5
35-39	2.5	2.5	2.5	2.5	2.4	2.5	2.9	3.3	2.6
40-44	8.8	9.4	8.1	8.4	8.8	8.0	12.9	15.5	10.6
45-49	20.6	23.8	17.6	19.6	22.0	17.2	32.5	42.3	23.9
50-54	40.9	50.3	31.9	39.4	47.2	31.7	62.5	87.5	41.3
55-59	81.5	100.7	63.5	80.1	96.4	64.5	115.4	166.4	73.4
60-64	148.8	185.7	115.2	149.3	181.8	119.1	183.9	272.8	114.4
65-69	229.3	292.2	174.8	232.4	290.9	180.7	259.8	383.7	167.9
70-74	315.0	413.1	236.4	321.0	414.0	244.9	325.7	496.5	210.3
75-79	373.3	510.1	275.8	378.9	510.3	283.8	381.7	607.2	247.2
80-84	376.4	539.9	276.5	380.8	540.1	282.6	375.7	626.3	244.8
85+	300.3	482.2	220.4	303.9	485.8	223.8	280.2	500.7	194.2

^a SEER 17 areas. Rates are per 100,000 and are age-adjusted to the 2000 US Std Population (19 age groups - Census P25-1130), unless noted.

^b US Mortality Files, National Center for Health Statistics, Centers for Disease Control and Prevention. Rates are per 100,000 and are age-adjusted to the 2000 US Std Population (19 age groups - Census P25-1130), unless noted.

^c Rates are per 100,000 and are age-adjusted to the IARC world standard population.

- Statistic not shown. Rate based on less than 16 cases for the time interval.

Table XV-8
 SMALL CELL LUNG AND BRONCHUS CANCER (Invasive) and NON-SMALL CELL LUNG AND BRONCHUS CANCER (Invasive)

SEER INCIDENCE^a RATES, AGE-ADJUSTED AND AGE-SPECIFIC RATES, BY RACE AND SEX

	All Races			Whites			Blacks		
	Total	Males	Females	Total	Males	Females	Total	Males	Females
<u>SMALL CELL LUNG AND BRONCHUS CANCER</u>									
<u>AGE AT DIAGNOSIS</u>									
AGE-ADJUSTED RATES, 2001-2005									
All ages	8.1	9.3	7.3	8.7	9.7	8.0	7.4	9.3	6.1
Under 65	3.1	3.4	2.9	3.4	3.5	3.3	3.1	3.7	2.7
65 and over	42.7	50.3	37.7	45.7	52.5	41.1	36.9	48.1	30.0
All ages(IARC world std) ^b	5.5	6.1	5.1	6.0	6.4	5.6	5.1	6.2	4.3
AGE-SPECIFIC RATES, 2001-2005									
<1	-	-	-	-	-	-	-	-	-
1-4	-	-	-	-	-	-	-	-	-
5-9	-	-	-	-	-	-	-	-	-
10-14	-	-	-	-	-	-	-	-	-
15-19	-	-	-	-	-	-	-	-	-
20-24	-	-	-	-	-	-	-	-	-
25-29	-	-	-	-	-	-	-	-	-
30-34	0.1	-	-	-	-	-	-	-	-
35-39	0.3	0.3	0.3	0.4	0.4	0.4	-	-	-
40-44	1.2	1.2	1.2	1.3	1.3	1.4	1.2	1.2	1.1
45-49	3.5	3.5	3.5	3.8	3.7	3.8	3.8	3.9	3.6
50-54	7.6	8.4	6.9	8.2	8.9	7.5	8.3	9.9	7.0
55-59	16.0	17.0	15.1	17.1	17.7	16.5	17.4	20.6	14.8
60-64	28.5	30.7	26.5	31.0	32.7	29.5	25.8	31.0	21.7
65-69	41.4	43.8	39.4	44.8	46.1	43.7	39.0	47.4	32.5
70-74	50.6	56.5	45.8	54.9	59.9	50.7	38.7	46.6	33.2
75-79	51.4	62.1	43.7	54.5	64.6	47.3	43.0	56.0	35.0
80-84	39.2	50.8	32.0	40.6	51.5	33.8	38.9	60.5	27.1
85+	18.6	30.6	13.1	19.2	31.3	13.6	15.8	24.4	12.3
<u>NON-SMALL CELL LUNG AND BRONCHUS CANCER</u>									
<u>AGE AT DIAGNOSIS</u>									
AGE-ADJUSTED RATES, 2001-2005									
All ages	55.7	70.1	45.2	56.4	69.6	46.8	68.6	98.3	48.4
Under 65	18.1	20.7	15.6	17.7	19.7	15.9	28.0	37.3	20.4
65 and over	315.9	411.7	249.8	323.7	414.5	260.9	348.7	520.2	242.2
All ages(IARC world std) ^b	35.0	42.9	28.8	35.4	42.4	29.9	45.2	63.5	32.0
AGE-SPECIFIC RATES, 2001-2005									
<1	-	-	-	-	-	-	-	-	-
1-4	-	-	-	-	-	-	-	-	-
5-9	-	-	-	-	-	-	-	-	-
10-14	-	-	-	-	-	-	-	-	-
15-19	0.1	-	0.1	0.1	-	-	-	-	-
20-24	0.3	0.3	0.3	0.3	0.3	0.4	-	-	-
25-29	0.5	0.5	0.5	0.5	0.5	0.6	0.6	-	-
30-34	1.1	1.0	1.1	1.0	0.9	1.1	1.1	1.3	1.0
35-39	3.3	3.0	3.6	3.2	2.9	3.5	3.9	3.3	4.4
40-44	9.7	9.6	9.8	9.3	9.0	9.6	15.6	16.3	15.1
45-49	22.0	23.3	20.8	20.8	21.3	20.3	39.4	47.1	32.6
50-54	43.9	50.0	38.0	41.5	46.0	37.0	77.6	99.9	58.6
55-59	86.3	100.1	73.3	84.4	94.3	74.8	139.2	195.0	92.9
60-64	156.4	186.8	128.6	158.2	183.3	134.8	213.6	301.4	143.5
65-69	242.2	293.7	197.7	249.4	295.7	208.6	291.1	404.8	204.5
70-74	328.3	411.7	261.5	338.9	415.4	276.4	366.0	533.9	248.5
75-79	382.5	497.7	300.5	392.9	501.5	314.9	413.4	616.1	287.9
80-84	369.3	503.3	285.5	375.1	505.6	293.6	384.6	597.7	268.1
85+	276.3	417.5	211.2	277.1	418.8	212.9	286.4	491.1	203.2

^a SEER 17 areas. Rates are per 100,000 and are age-adjusted to the 2000 US Std Population (19 age groups - Census P25-1130), unless noted.

^b Rates are per 100,000 and are age-adjusted to the IARC world standard population.

- Statistic not shown. Rate based on less than 16 cases for the time interval.

Table XV-9
LUNG AND BRONCHUS CANCER (Invasive)

SURVIVAL RATES, BY RACE, SEX, DIAGNOSIS YEAR, STAGE AND AGE

	All Races			Whites			Blacks		
	Total	Males	Females	Total	Males	Females	Total	Males	Females
5-YR RELATIVE SURVIVAL RATES									
YEAR OF DIAGNOSIS:									
1960-1963 ^a	-	-	-	8	7	11	5	5	6
1970-1973 ^a	-	-	-	10	9	14	7	6	10
1975-1977 ^b	12.7	11.5	15.8	12.8	11.5	15.9	11.4	10.6	14.0
1978-1980 ^b	13.3	11.8	16.7	13.4	12.0	16.6	12.0	10.0	17.9
1981-1983 ^b	13.7	12.1	16.9	13.9	12.3	17.1	11.7	10.5	15.1
1984-1986 ^b	13.3	11.6	16.4	13.5	11.7	16.7	11.4	10.6	13.0
1987-1989 ^b	13.5	12.4	15.4	13.8	12.5	15.8	11.2	11.1	11.4
1990-1992 ^b	14.1	12.6	16.3	14.5	13.0	16.6	10.8	9.6	12.8
1993-1995 ^b	14.8	12.9	17.4	15.1	13.1	17.7	13.0	11.5	15.8
1996-2004 ^b	15.7 ^e	13.5 ^e	18.2 ^e	15.9 ^e	13.7 ^e	18.4 ^e	12.7 ^e	11.0	15.1
5-YR PERIOD SURVIVAL RATES^{cd}									
YEAR OF DIAGNOSIS:									
1996-2004	15.5	13.3	17.9	15.8	13.6	18.2	12.1	10.4	14.4
STAGE DISTRIBUTION (%) 1996-2004^c									
All Stages									
Number of cases	244,474	134,234	110,240	203,259	109,417	93,842	25,770	15,347	10,423
Percent	100%	100%	100%	100%	100%	100%	100%	100%	100%
Localized	16	15	18	16	15	18	14	12	15
Regional	25	26	24	25	26	25	25	26	25
Distant	51	53	50	51	52	49	55	56	54
Unstaged	8	7	8	8	7	8	6	6	7
5-YR RELATIVE SURVIVAL RATES, 1996-2004^c									
AGE AT DIAGNOSIS:									
<45	23.4	20.8	26.1	25.6	23.6	27.6	15.5	12.0	19.5
45-54	18.1	14.7	22.4	18.8	15.0	23.4	13.8	11.5	17.5
55-64	17.3	14.8	20.7	17.9	15.3	21.1	13.3	11.3	16.8
65-74	15.2	13.1	17.7	15.4	13.2	17.9	11.3	10.0	13.0
75+	10.7	9.4	11.9	10.8	9.5	12.1	8.3	7.0	9.4
Under 65	18.0	15.2	21.7	18.7	15.8	22.3	13.7	11.4	17.4
65 and over	13.3	11.6	15.1	13.5	11.8	15.3	10.2	9.1	11.7
STAGE:									
All Stages	15.2	13.1	17.6	15.5	13.4	17.9	12.1	10.4	14.5
Localized	49.5	44.7	54.0	50.1	45.5	54.3	41.2	37.0	46.1
Regional	20.6	18.8	22.7	20.7	19.0	22.7	17.5	15.5	20.4
Distant	2.8	2.4	3.3	2.7	2.3	3.2	2.7	2.4	3.2
Unstaged	8.3	7.7	8.9	7.8	7.3	8.4	9.3	8.6	10.1

^a Rates are based on End Results data from a series of hospital registries and one population-based registry.

^b Rates are from the SEER 9 areas (San Francisco, Connecticut, Detroit, Hawaii, Iowa, New Mexico, Seattle, Utah, Atlanta).

Rates are based on follow-up of patients into 2005.

^c Rates are from the SEER 17 areas (San Francisco, Connecticut, Detroit, Hawaii, Iowa, New Mexico, Seattle, Utah, Atlanta, San Jose-Monterey, Los Angeles, Alaska Native Registry, Rural Georgia, California excluding SF/SJM/LA, Kentucky, Louisiana and New Jersey). California excluding SF/SJM/LA, Kentucky, Louisiana, and New Jersey contribute cases for diagnosis years 2000-2004. The remaining 13 SEER Areas contribute cases for the entire period 1996-2004. Rates are based on follow-up of patients into 2005.

^d Period survival provides a more up-to-date estimate of survival by piecing together the most recent conditional survival estimates from several cohorts. It is computed here using three calendar year blocks (2002-2004: 0-1 year survival), (2001-2003: 1-2 year survival), (2000-2002: 2-3 year survival), (1999-2001: 3-4 year survival), (1998-2000: 4-5 years survival).

^e The difference in rates between 1975-1977 and 1996-2004 is statistically significant ($p < .05$).

^f The standard error of the survival rate is between 5 and 10 percentage points.

^g The standard error of the survival rate is greater than 10 percentage points.

- Statistic could not be calculated due to fewer than 16 cases during the time period.

Table XV-10
SMALL CELL LUNG AND BRONCHUS CANCER (Invasive)

SURVIVAL RATES, BY RACE, SEX, DIAGNOSIS YEAR, STAGE AND AGE

	All Races			Whites			Blacks		
	Total	Males	Females	Total	Males	Females	Total	Males	Females
5-YR RELATIVE SURVIVAL RATES									
YEAR OF DIAGNOSIS:									
1975-1977 ^a	3.7	3.2	4.8	3.8	3.2	4.9	3.8	3.9	3.6
1978-1980 ^a	4.4	3.3	6.6	4.5	3.5	6.6	3.2	2.4	5.0
1981-1983 ^a	4.8	3.8	6.4	4.8	3.9	6.2	5.6	4.3	8.5
1984-1986 ^a	4.7	3.5	6.5	4.9	3.7	6.7	3.6	2.3	5.6
1987-1989 ^a	5.2	4.0	6.7	5.3	4.0	6.9	4.0	3.4	4.7
1990-1992 ^a	5.6	4.8	6.6	5.7	4.8	6.8	4.2	4.4	3.9
1993-1995 ^a	6.6	5.4	8.0	6.5	5.3	7.8	6.9	4.6	9.9
1996-2004 ^a	6.2 ^d	5.2 ^d	7.3 ^d	6.3 ^d	5.1 ^d	7.5 ^d	4.6	4.3 ^d	4.9
5-YR PERIOD SURVIVAL RATES^{bc}									
YEAR OF DIAGNOSIS:									
1996-2004	5.9	5.1	6.7	5.9	5.0	6.7	4.6	4.0	5.0
STAGE DISTRIBUTION (%) 1996-2004^b									
All Stages									
Number of cases	34,022	17,520	16,502	29,767	15,042	14,725	2,722	1,461	1,261
Percent	100%	100%	100%	100%	100%	100%	100%	100%	100%
Localized	6	6	6	6	5	6	6	6	6
Regional	24	22	26	24	22	26	25	24	25
Distant	66	68	63	66	68	63	65	66	65
Unstaged	5	4	5	5	4	5	4	4	4
5-YR RELATIVE SURVIVAL RATES, 1996-2004^b									
AGE AT DIAGNOSIS:									
<45	8.9	7.8	10.0	9.8	8.1	11.5	2.0	3.6	0.0
45-54	8.7	6.7	11.1	8.9	7.1	11.1	6.4	3.7	9.7
55-64	7.5	6.1	9.0	7.5	6.0	9.2	5.2	5.3	5.1
65-74	5.1	4.4	5.7	5.0	4.2	5.8	3.7	4.3	3.0
75+	3.0	2.5	3.4	3.1	2.7	3.4	1.6	1.0	2.4
Under 65	7.9	6.3	9.6	8.0	6.4	9.8	5.3	4.5	6.3
65 and over	4.3	3.8	4.8	4.3	3.7	4.9	3.1	3.4	2.9
STAGE:									
All Stages	5.9	5.0	6.8	5.9	4.9	6.9	4.2	4.0	4.5
Localized	19.5	17.7	21.1	19.2	17.7	20.5	15.8	16.9 ^e	15.1 ^e
Regional	12.5	11.1	13.7	12.9	11.3	14.2	8.2	8.6	7.6
Distant	2.2	1.9	2.5	2.2	1.8	2.6	1.6	1.2	2.0
Unstaged	6.4	5.4	7.2	6.4	5.7	6.8	6.0	3.4	8.8

^a Rates are from the SEER 9 areas (San Francisco, Connecticut, Detroit, Hawaii, Iowa, New Mexico, Seattle, Utah, Atlanta).

Rates are based on follow-up of patients into 2005.

^b Rates are from the SEER 17 areas (San Francisco, Connecticut, Detroit, Hawaii, Iowa, New Mexico, Seattle, Utah, Atlanta, San Jose-Monterey, Los Angeles, Alaska Native Registry, Rural Georgia, California excluding SF/SJM/LA, Kentucky, Louisiana and New Jersey). California excluding SF/SJM/LA, Kentucky, Louisiana, and New Jersey contribute cases for diagnosis years 2000-2004. The remaining 13 SEER Areas contribute cases for the entire period 1996-2004. Rates are based on follow-up of patients into 2005.

^c Period survival provides a more up-to-date estimate of survival by piecing together the most recent conditional survival estimates from several cohorts. It is computed here using three calendar year blocks (2002-2004: 0-1 year survival), (2001-2003: 1-2 year survival), (2000-2002: 2-3 year survival), (1999-2001: 3-4 year survival), (1998-2000: 4-5 years survival).

^d The difference in rates between 1975-1977 and 1996-2004 is statistically significant ($p < .05$).

^e The standard error of the survival rate is between 5 and 10 percentage points.

^f The standard error of the survival rate is greater than 10 percentage points.

- Statistic could not be calculated due to fewer than 16 cases during the time period.

Table XV-11
NON-SMALL CELL LUNG AND BRONCHUS CANCER (Invasive)

SURVIVAL RATES, BY RACE, SEX, DIAGNOSIS YEAR, STAGE AND AGE

	All Races			Whites			Blacks		
	Total	Males	Females	Total	Males	Females	Total	Males	Females
5-YR RELATIVE SURVIVAL RATES									
YEAR OF DIAGNOSIS:									
1975-1977 ^a	14.2	12.7	17.9	14.3	12.8	18.1	12.4	11.3	16.2
1978-1980 ^a	15.0	13.4	18.8	15.2	13.6	18.9	13.2	10.9	19.9
1981-1983 ^a	15.6	13.7	19.5	16.0	14.0	19.9	12.5	11.3	16.1
1984-1986 ^a	15.1	13.2	18.8	15.5	13.4	19.3	12.6	11.8	14.6
1987-1989 ^a	15.3	14.0	17.6	15.7	14.2	18.1	12.3	12.1	12.6
1990-1992 ^a	15.8	14.0	18.6	16.4	14.6	19.1	11.6	10.2	14.3
1993-1995 ^a	16.4	14.2	19.5	16.8	14.5	20.0	13.8	12.3	16.7
1996-2004 ^a	17.3 ^d	14.9 ^d	20.3 ^d	17.7 ^d	15.2 ^d	20.7 ^d	13.7 ^d	11.7	16.6
5-YR PERIOD SURVIVAL RATES^{bc}									
YEAR OF DIAGNOSIS:									
1996-2004	17.1	14.6	19.9	17.5	15.0	20.4	13.0	11.1	15.5
STAGE DISTRIBUTION (%) 1996-2004^b									
All Stages									
Number of cases	210,452	116,714	93,738	173,492	94,375	79,117	23,048	13,886	9,162
Percent	100%	100%	100%	100%	100%	100%	100%	100%	100%
Localized	18	16	20	18	16	20	14	13	16
Regional	25	26	24	25	26	24	25	26	24
Distant	49	50	48	48	49	46	54	55	52
Unstaged	8	8	9	8	8	9	7	6	7
5-YR RELATIVE SURVIVAL RATES, 1996-2004^b									
AGE AT DIAGNOSIS:									
<45	25.2	22.5	28.1	27.9	25.8	29.9	16.6	12.7	21.0
45-54	19.7	16.0	24.6	20.7	16.5	26.0	14.7	12.3	18.5
55-64	19.3	16.4	23.3	20.1	17.2	24.0	14.3	11.9	18.5
65-74	17.0	14.5	20.1	17.3	14.7	20.5	12.3	10.6	14.6
75+	11.7	10.2	13.1	11.9	10.4	13.3	9.0	7.6	10.2
Under 65	19.9	16.7	24.2	20.9	17.6	25.1	14.7	12.2	18.8
65 and over	14.7	12.8	16.9	15.0	13.0	17.2	11.1	9.7	12.9
STAGE:									
All Stages	16.8	14.4	19.6	17.2	14.8	20.0	13.0	11.1	15.9
Localized	51.2	46.2	55.9	51.9	47.0	56.3	42.4	37.9	47.6
Regional	21.8	19.8	24.4	22.0	20.0	24.5	18.5	16.2	22.1
Distant	2.9	2.5	3.5	2.8	2.4	3.4	2.9	2.5	3.4
Unstaged	8.5	7.9	9.1	8.0	7.4	8.6	9.6	9.0	10.1

^a Rates are from the SEER 9 areas (San Francisco, Connecticut, Detroit, Hawaii, Iowa, New Mexico, Seattle, Utah, Atlanta).

Rates are based on follow-up of patients into 2005.

^b Rates are from the SEER 17 areas (San Francisco, Connecticut, Detroit, Hawaii, Iowa, New Mexico, Seattle, Utah, Atlanta, San Jose-Monterey, Los Angeles, Alaska Native Registry, Rural Georgia, California excluding SF/SJM/LA, Kentucky, Louisiana and New Jersey). California excluding SF/SJM/LA, Kentucky, Louisiana, and New Jersey contribute cases for diagnosis years 2000-2004. The remaining 13 SEER Areas contribute cases for the entire period 1996-2004. Rates are based on follow-up of patients into 2005.

^c Period survival provides a more up-to-date estimate of survival by piecing together the most recent conditional survival estimates from several cohorts. It is computed here using three calendar year blocks (2002-2004: 0-1 year survival), (2001-2003: 1-2 year survival), (2000-2002: 2-3 year survival), (1999-2001: 3-4 year survival), (1998-2000: 4-5 years survival).

^d The difference in rates between 1975-1977 and 1996-2004 is statistically significant ($p < .05$).

^e The standard error of the survival rate is between 5 and 10 percentage points.

^f The standard error of the survival rate is greater than 10 percentage points.

- Statistic could not be calculated due to fewer than 16 cases during the time period.

Table XV-12
LUNG AND BRONCHUS CANCER (Invasive)

SURVIVAL RATES^a

By Year of Diagnosis

All Races, Males and Females

Year of Diagnosis

	1975- 1979	1980- 1984	1985	1986	1987	1988	1989	1990	1991	1992	1993	1994	1995	1996	1997	1998	1999	2000	2001	2002	2003	2004
Relative Survival Rates (SEER ^b)																						
1-year	36.7	38.7	39.5	40.3	39.6	40.2	40.3	40.3	41.2	41.1	40.8	41.0	41.6	41.0	41.6	41.2	42.7	42.3	41.5	41.9	42.9	43.3
2-year	21.7	22.6	22.9	23.2	22.7	23.4	23.4	23.6	23.9	24.7	24.6	24.5	25.4	25.3	25.3	25.8	26.4	26.5	26.1	27.0	26.9	
3-year	16.7	17.4	17.6	17.6	17.0	17.7	17.6	18.0	18.7	19.0	18.9	19.0	19.5	19.7	19.7	20.2	20.2	20.8	20.3	21.3		
4-year	14.4	14.9	15.1	14.8	14.7	15.2	15.2	15.3	16.0	16.2	16.2	16.3	16.9	16.7	17.0	17.4	17.4	18.0	17.2			
5-year	13.0	13.4	13.6	13.2	13.2	13.5	13.9	13.8	14.2	14.3	14.7	14.7	15.0	15.1	15.2	15.1	15.7	16.2				
6-year	12.0	12.3	12.6	12.1	12.2	12.3	12.9	12.7	13.2	13.2	13.6	13.6	13.7	13.8	13.8	13.8	14.4					
7-year	11.4	11.5	11.6	11.4	11.1	11.4	11.9	11.8	12.0	12.2	12.6	12.6	13.0	12.8	12.8	12.8						
8-year	10.8	10.7	10.9	10.6	10.5	10.6	11.1	11.0	11.2	11.3	11.7	11.9	12.2	12.0	11.9							
9-year	10.2	10.0	10.2	10.2	9.8	10.0	10.5	10.1	10.6	10.6	11.1	11.2	11.6	11.2								
11-year	9.7	9.4	9.7	9.5	9.3	9.4	10.0	9.4	10.1	10.0	10.3	10.6	10.9									
10-year	9.2	9.1	9.3	8.9	8.8	8.8	9.4	8.9	9.5	9.4	9.8	10.0										
12-year	8.9	8.6	8.8	8.4	8.4	8.2	9.0	8.3	9.0	9.1	9.2											
13-year	8.5	8.2	8.4	8.0	7.8	7.9	8.6	8.1	8.4	8.6												
14-year	8.2	7.9	8.1	7.7	7.4	7.6	8.1	7.8	7.7													
15-year	7.8	7.5	7.7	7.3	7.1	7.4	7.8	7.6														
16-year	7.6	7.2	7.2	7.1	6.9	7.1	7.5															
17-year	7.4	6.8	6.6	6.8	6.7	6.8																
18-year	7.0	6.5	6.1	6.6	6.4																	
19-year	6.8	6.2	5.8	6.2																		
20-year	6.6	5.8	5.7																			

^a Survival rates are relative rates expressed as percents.

^b Rates are from the SEER 9 areas (San Francisco, Connecticut, Detroit, Hawaii, Iowa, New Mexico, Seattle, Utah, and Atlanta).

Table XV-13
LUNG AND BRONCHUS CANCER (Invasive)

SURVIVAL RATES^a

By Year of Diagnosis

All Races, Males

Year of Diagnosis

	1975- 1979	1980- 1984	1985	1986	1987	1988	1989	1990	1991	1992	1993	1994	1995	1996	1997	1998	1999	2000	2001	2002	2003	2004
Relative Survival Rates (SEER ^b)																						
1-year	34.7	36.8	36.8	38.2	38.2	38.2	37.9	38.1	39.0	39.1	38.3	38.7	39.3	39.1	39.3	38.3	39.6	40.0	38.3	38.4	40.4	40.4
2-year	20.0	20.8	20.9	21.0	21.7	21.9	22.0	21.4	22.1	23.2	22.4	22.0	23.5	23.5	23.5	23.2	23.3	24.3	22.7	23.6	24.0	
3-year	15.1	15.7	15.6	15.9	15.9	16.5	16.2	16.1	17.1	17.6	16.6	16.7	17.6	18.1	18.1	17.8	17.0	18.6	17.7	18.4		
4-year	12.9	13.4	13.0	13.1	13.6	13.7	13.9	13.5	14.2	14.8	14.0	14.0	15.2	15.0	15.2	15.0	14.4	16.1	14.7			
5-year	11.5	12.0	11.7	11.6	12.3	12.1	12.8	12.0	12.6	13.1	12.6	12.6	13.5	13.5	13.7	12.8	13.0	14.5				
6-year	10.6	10.9	10.7	10.6	11.3	10.9	11.9	11.0	11.7	11.9	11.6	11.4	12.2	12.2	12.3	11.4	11.8					
7-year	10.0	10.1	9.9	9.9	10.4	9.9	11.2	10.2	10.5	10.9	10.8	10.5	11.7	11.2	11.3	10.6						
8-year	9.5	9.3	9.2	9.2	9.9	9.2	10.5	9.3	9.7	9.9	9.9	9.8	10.8	10.5	10.5							
9-year	8.9	8.7	8.7	8.7	9.3	8.6	10.0	8.4	9.2	9.2	9.4	9.4	10.1	9.9								
11-year	8.4	8.2	8.2	8.1	8.7	8.1	9.5	7.7	8.8	8.6	8.9	8.9	9.4									
10-year	8.0	7.8	7.9	7.5	8.2	7.7	8.9	7.1	8.2	7.9	8.2	8.6										
12-year	7.6	7.5	7.4	6.9	7.7	7.0	8.5	6.7	7.9	7.7	7.8											
13-year	7.2	7.1	7.1	6.6	7.0	6.7	8.0	6.4	7.2	7.3												
14-year	7.0	6.8	6.8	6.4	6.7	6.5	7.5	6.3	6.6													
15-year	6.6	6.4	6.4	6.0	6.5	6.4	7.3	5.9														
16-year	6.4	6.0	6.2	5.7	6.2	6.0	6.9															
17-year	6.2	5.7	5.5	5.3	5.9	5.6																
18-year	5.9	5.5	5.0	5.2	5.5																	
19-year	5.7	5.2	4.8	4.9																		
20-year	5.5	4.8	4.6																			

^a Survival rates are relative rates expressed as percents.

^b Rates are from the SEER 9 areas (San Francisco, Connecticut, Detroit, Hawaii, Iowa, New Mexico, Seattle, Utah, and Atlanta).

Table XV-14
LUNG AND BRONCHUS CANCER (Invasive)

SURVIVAL RATES^a

By Year of Diagnosis

All Races, Females

Year of Diagnosis

	1975- 1979	1980- 1984	1985	1986	1987	1988	1989	1990	1991	1992	1993	1994	1995	1996	1997	1998	1999	2000	2001	2002	2003	2004
Relative Survival Rates (SEER ^b)																						
1-year	41.7	42.7	44.7	43.9	42.3	43.6	44.1	43.7	44.5	44.1	44.5	44.1	44.6	43.4	44.6	44.9	46.5	45.2	45.5	46.2	46.0	46.6
2-year	25.8	26.2	26.7	27.1	24.6	25.8	25.8	27.0	26.8	27.0	27.8	27.8	28.0	27.6	27.6	29.1	30.1	29.3	30.4	31.0	30.2	
3-year	20.6	20.9	21.4	20.6	18.9	19.7	19.8	21.0	21.1	21.1	22.2	22.2	22.1	21.7	21.8	23.3	24.1	23.5	23.4	24.6		
4-year	18.1	18.1	19.0	17.8	16.6	17.5	17.3	18.0	18.6	18.3	19.2	19.4	19.4	18.9	19.0	20.3	20.9	20.4	20.3			
5-year	16.6	16.4	17.1	15.9	14.8	15.6	15.7	16.5	16.4	16.1	17.7	17.5	17.1	17.2	17.1	17.9	18.9	18.2				
6-year	15.4	15.1	16.0	14.8	13.6	14.4	14.5	15.2	15.2	15.1	16.3	16.4	15.7	15.8	15.7	16.6	17.4					
7-year	14.5	14.2	14.7	13.8	12.2	13.5	13.1	14.0	14.1	14.0	15.1	15.2	14.7	14.8	14.7	15.5						
8-year	13.8	13.3	13.8	13.0	11.5	12.7	12.0	13.3	13.2	13.2	14.2	14.4	14.1	13.8	13.6							
9-year	13.0	12.5	12.9	12.5	10.5	12.0	11.3	12.5	12.6	12.5	13.4	13.4	13.4	12.8								
11-year	12.3	11.8	12.3	11.5	10.3	11.3	10.6	11.8	11.8	11.9	12.3	12.6	12.8									
10-year	11.9	11.3	11.5	11.1	9.8	10.5	10.1	11.2	11.2	11.3	11.8	11.8										
12-year	11.5	10.7	11.1	10.7	9.3	9.8	9.7	10.5	10.5	10.9	11.1											
13-year	11.1	10.1	10.5	10.1	9.0	9.6	9.4	10.3	9.8	10.4												
14-year	10.6	9.8	10.0	9.8	8.4	9.1	9.0	9.9	9.2													
15-year	10.1	9.3	9.6	9.2	8.1	8.8	8.5	9.8														
16-year	9.8	8.9	8.9	9.0	7.9	8.4	8.3															
17-year	9.4	8.7	8.2	8.9	7.6	8.3																
18-year	9.1	8.2	7.7	8.6	7.5																	
19-year	8.7	7.6	7.4	8.0																		
20-year	8.5	7.3	7.3																			

^a Survival rates are relative rates expressed as percents.^b Rates are from the SEER 9 areas (San Francisco, Connecticut, Detroit, Hawaii, Iowa, New Mexico, Seattle, Utah, and Atlanta).

Table XV-15
LUNG AND BRONCHUS CANCER (Invasive)

Risk of Being Diagnosed With Cancer in 10, 20 and 30 Years, Lifetime Risk of Being Diagnosed with Cancer, and
Lifetime Risk of Dying from Cancer Given Cancer Free At Current Age
Both Sexes, 2003-2005 By Race/Ethnicity

Race/ Ethnicity	Current Age	Risk of Being Diagnosed with Cancer			Risk of Dying from Cancer	
		+10 yrs Percent (95% C.I.)	+20 yrs Percent (95% C.I.)	+30 yrs Percent (95% C.I.)	Eventually Percent (95% C.I.)	Eventually Percent (95% C.I.)
All Races	0	0.00 (0.00, 0.00)	0.00 (0.00, 0.00)	0.01 (0.00, 0.01)	6.94 (6.90, 6.97)	5.98 (5.96, 5.99)
	10	0.00 (0.00, 0.00)	0.01 (0.00, 0.01)	0.03 (0.03, 0.03)	7.02 (6.98, 7.06)	6.06 (6.04, 6.08)
	20	0.00 (0.00, 0.01)	0.03 (0.03, 0.03)	0.21 (0.21, 0.22)	7.05 (7.01, 7.09)	6.09 (6.07, 6.10)
	30	0.03 (0.03, 0.03)	0.21 (0.21, 0.21)	0.91 (0.90, 0.92)	7.11 (7.07, 7.15)	6.14 (6.13, 6.16)
	40	0.19 (0.18, 0.19)	0.90 (0.89, 0.91)	2.80 (2.78, 2.82)	7.18 (7.14, 7.22)	6.21 (6.19, 6.23)
	50	0.73 (0.72, 0.74)	2.69 (2.67, 2.71)	5.42 (5.38, 5.45)	7.20 (7.15, 7.24)	6.24 (6.22, 6.26)
	60	2.09 (2.07, 2.11)	4.99 (4.96, 5.03)	6.61 (6.57, 6.65)	6.89 (6.85, 6.93)	6.02 (6.00, 6.04)
	70	3.37 (3.34, 3.39)	5.24 (5.20, 5.28)	- (- , -)	5.56 (5.52, 5.60)	4.97 (4.95, 4.99)
80	2.67 (2.64, 2.70)	- (- , -)	- (- , -)	3.12 (3.09, 3.16)	2.99 (2.97, 3.00)	
White	0	0.00 (0.00, 0.00)	0.00 (0.00, 0.00)	0.01 (0.00, 0.01)	7.13 (7.08, 7.17)	6.12 (6.10, 6.14)
	10	0.00 (0.00, 0.00)	0.01 (0.00, 0.01)	0.03 (0.03, 0.03)	7.20 (7.16, 7.25)	6.19 (6.17, 6.21)
	20	0.00 (0.00, 0.01)	0.03 (0.03, 0.03)	0.21 (0.20, 0.21)	7.23 (7.19, 7.27)	6.22 (6.20, 6.24)
	30	0.03 (0.02, 0.03)	0.20 (0.20, 0.21)	0.89 (0.88, 0.90)	7.29 (7.24, 7.33)	6.27 (6.25, 6.29)
	40	0.18 (0.17, 0.18)	0.88 (0.87, 0.89)	2.85 (2.83, 2.87)	7.35 (7.31, 7.40)	6.33 (6.31, 6.35)
	50	0.72 (0.71, 0.73)	2.75 (2.72, 2.77)	5.58 (5.55, 5.62)	7.37 (7.32, 7.42)	6.36 (6.34, 6.38)
	60	2.15 (2.13, 2.18)	5.17 (5.13, 5.21)	6.80 (6.76, 6.85)	7.07 (7.02, 7.11)	6.13 (6.11, 6.15)
	70	3.48 (3.45, 3.51)	5.37 (5.33, 5.41)	- (- , -)	5.68 (5.63, 5.72)	5.05 (5.03, 5.07)
80	2.69 (2.66, 2.73)	- (- , -)	- (- , -)	3.13 (3.09, 3.17)	3.01 (2.99, 3.03)	
Black	0	0.00 (0.00, 0.00)	0.00 (0.00, 0.00)	0.01 (0.00, 0.01)	6.54 (6.42, 6.66)	5.49 (5.44, 5.53)
	10	0.00 (0.00, 0.00)	0.01 (0.00, 0.01)	0.04 (0.03, 0.04)	6.69 (6.57, 6.82)	5.62 (5.57, 5.67)
	20	0.01 (0.00, 0.01)	0.04 (0.03, 0.04)	0.33 (0.31, 0.34)	6.74 (6.61, 6.86)	5.66 (5.61, 5.71)
	30	0.03 (0.03, 0.04)	0.33 (0.31, 0.34)	1.36 (1.32, 1.40)	6.84 (6.72, 6.97)	5.74 (5.69, 5.79)
	40	0.30 (0.29, 0.32)	1.36 (1.32, 1.40)	3.40 (3.33, 3.48)	6.98 (6.85, 7.11)	5.86 (5.80, 5.91)
	50	1.11 (1.08, 1.15)	3.27 (3.20, 3.35)	5.65 (5.54, 5.76)	7.04 (6.91, 7.18)	5.93 (5.87, 5.98)
	60	2.43 (2.36, 2.50)	5.11 (4.99, 5.22)	6.45 (6.31, 6.58)	6.68 (6.54, 6.83)	5.68 (5.62, 5.74)
	70	3.37 (3.27, 3.47)	5.06 (4.92, 5.20)	- (- , -)	5.36 (5.21, 5.51)	4.66 (4.60, 4.72)
80	2.72 (2.60, 2.84)	- (- , -)	- (- , -)	3.20 (3.06, 3.35)	2.92 (2.86, 2.98)	

Devcan Version 7.0.0, April 2008, National Cancer Institute (<http://srab.cancer.gov/devcan/>).

Source: Incidence data are from the SEER 17 areas (San Francisco, Connecticut, Detroit, Hawaii, Iowa, New Mexico, Seattle, Utah, Atlanta, San Jose-Monterey, Los Angeles, Alaska Native Registry, Rural Georgia, California excluding SF/SJM/LA, Kentucky, Louisiana and New Jersey). Mortality data are from the NCHS public use data file for the total US.

- Statistic could not be calculated.

A percent or confidence interval value of 0.00 represents a value that is below 0.005.

Table XV-15 - continued
LUNG AND BRONCHUS CANCER (Invasive)

Risk of Being Diagnosed With Cancer in 10, 20 and 30 Years, Lifetime Risk of Being Diagnosed with Cancer, and
 Lifetime Risk of Dying from Cancer Given Cancer Free At Current Age
 Both Sexes, 2003-2005 By Race/Ethnicity

Race/ Ethnicity	Current Age	Risk of Being Diagnosed with Cancer				Risk of Dying from Cancer	
		+10 yrs Percent (95% C.I.)	+20 yrs Percent (95% C.I.)	+30 yrs Percent (95% C.I.)	Eventually Percent (95% C.I.)	Eventually Percent (95% C.I.)	
Asian/ Pacific Islander	0	0.00 (0.00, 0.00)	0.00 (0.00, 0.00)	0.00 (0.00, 0.01)	5.54 (5.38, 5.71)	4.17 (4.05, 4.30)	
	10	0.00 (0.00, 0.00)	0.00 (0.00, 0.01)	0.03 (0.03, 0.04)	5.59 (5.43, 5.76)	4.20 (4.08, 4.34)	
	20	0.00 (0.00, 0.00)	0.03 (0.02, 0.03)	0.15 (0.13, 0.16)	5.61 (5.45, 5.78)	4.21 (4.09, 4.35)	
	30	0.03 (0.02, 0.03)	0.14 (0.13, 0.16)	0.58 (0.55, 0.60)	5.63 (5.47, 5.80)	4.23 (4.11, 4.36)	
	40	0.12 (0.11, 0.13)	0.55 (0.53, 0.58)	1.65 (1.60, 1.71)	5.64 (5.47, 5.81)	4.24 (4.11, 4.37)	
	50	0.44 (0.42, 0.46)	1.56 (1.50, 1.61)	3.47 (3.38, 3.57)	5.60 (5.43, 5.77)	4.22 (4.09, 4.35)	
	60	1.16 (1.11, 1.21)	3.14 (3.04, 3.23)	4.79 (4.66, 4.93)	5.34 (5.17, 5.52)	4.09 (3.96, 4.23)	
	70	2.16 (2.08, 2.24)	3.96 (3.83, 4.09)	- (- , -)	4.56 (4.38, 4.74)	3.66 (3.53, 3.80)	
	80	2.24 (2.12, 2.36)	- (- , -)	- (- , -)	2.98 (2.80, 3.17)	2.61 (2.47, 2.77)	
American Indian/ Alaska Native ^a	0	0.00 (0.00, 0.02)	0.00 (0.00, 0.02)	0.00 (0.00, 0.02)	5.04 (4.54, 5.67)	4.10 (3.85, 4.38)	
	10	0.00 (0.00, 0.01)	0.00 (0.00, 0.01)	0.02 (0.01, 0.04)	5.14 (4.63, 5.78)	4.18 (3.92, 4.46)	
	20	0.00 (0.00, 0.01)	0.02 (0.01, 0.04)	0.12 (0.08, 0.16)	5.18 (4.67, 5.82)	4.21 (3.96, 4.50)	
	30	0.02 (0.01, 0.04)	0.12 (0.08, 0.16)	0.65 (0.55, 0.76)	5.26 (4.74, 5.92)	4.29 (4.03, 4.58)	
	40	0.10 (0.07, 0.14)	0.65 (0.55, 0.76)	2.02 (1.79, 2.27)	5.39 (4.85, 6.06)	4.41 (4.14, 4.71)	
	50	0.57 (0.47, 0.68)	2.00 (1.76, 2.25)	4.13 (3.72, 4.56)	5.51 (4.96, 6.21)	4.51 (4.23, 4.83)	
	60	1.54 (1.33, 1.78)	3.84 (3.42, 4.29)	5.10 (4.57, 5.69)	5.33 (4.75, 6.07)	4.47 (4.17, 4.81)	
	70	2.70 (2.33, 3.11)	4.19 (3.65, 4.80)	- (- , -)	4.46 (3.85, 5.26)	3.71 (3.40, 4.08)	
	80	2.10 (1.64, 2.67)	- (- , -)	- (- , -)	2.48 (1.88, 3.39)	2.24 (1.91, 2.66)	
Hispanic ^b	0	0.00 (0.00, 0.00)	0.00 (0.00, 0.00)	0.00 (0.00, 0.01)	4.36 (4.23, 4.49)	3.16 (3.09, 3.23)	
	10	0.00 (0.00, 0.00)	0.00 (0.00, 0.01)	0.02 (0.01, 0.02)	4.41 (4.28, 4.54)	3.20 (3.13, 3.27)	
	20	0.00 (0.00, 0.01)	0.02 (0.01, 0.02)	0.09 (0.08, 0.10)	4.43 (4.30, 4.56)	3.21 (3.14, 3.28)	
	30	0.01 (0.01, 0.01)	0.09 (0.08, 0.09)	0.40 (0.38, 0.42)	4.46 (4.33, 4.59)	3.23 (3.17, 3.30)	
	40	0.08 (0.07, 0.08)	0.39 (0.37, 0.41)	1.33 (1.29, 1.37)	4.49 (4.36, 4.63)	3.26 (3.19, 3.33)	
	50	0.32 (0.31, 0.34)	1.28 (1.24, 1.33)	2.89 (2.81, 2.97)	4.52 (4.38, 4.66)	3.29 (3.22, 3.36)	
	60	1.01 (0.97, 1.05)	2.70 (2.62, 2.78)	3.96 (3.85, 4.08)	4.41 (4.27, 4.55)	3.24 (3.16, 3.31)	
	70	1.89 (1.82, 1.96)	3.31 (3.20, 3.43)	- (- , -)	3.81 (3.67, 3.96)	2.89 (2.82, 2.97)	
	80	1.87 (1.77, 1.98)	- (- , -)	- (- , -)	2.53 (2.37, 2.70)	2.07 (1.98, 2.16)	

Devcan Version 7.0.0, April 2008, National Cancer Institute (<http://srab.cancer.gov/devcan/>).

Source: Incidence data are from the SEER 17 areas (San Francisco, Connecticut, Detroit, Hawaii, Iowa, New Mexico, Seattle, Utah, Atlanta, San Jose-Monterey, Los Angeles, Alaska Native Registry, Rural Georgia, California excluding SF/SJM/LA, Kentucky, Louisiana and New Jersey). Mortality data are from the NCHS public use data file for the total US.

^a Underlying incidence and mortality data for American Indian/Alaska Native are based on the CHSDA (Contract Health Service Delivery Area) counties.

^b Hispanic is not mutually exclusive from whites, blacks, Asian/Pacific Islanders, and American Indians/Alaska Natives. Underlying incidence data for Hispanics are based on NHIA and exclude cases from the Alaska Native Registry and Kentucky. Underlying mortality data for Hispanics exclude deaths from Minnesota, New Hampshire and North Dakota.

- Statistic could not be calculated.

A percent or confidence interval value of 0.00 represents a value that is below 0.005.

Table XV-15 - continued
LUNG AND BRONCHUS CANCER (Invasive)

Risk of Being Diagnosed With Cancer in 10, 20 and 30 Years, Lifetime Risk of Being Diagnosed with Cancer, and
Lifetime Risk of Dying from Cancer Given Cancer Free At Current Age
Males, 2003-2005 By Race/Ethnicity

Race/ Ethnicity	Current Age	Risk of Being Diagnosed with Cancer				Risk of Dying from Cancer	
		+10 yrs Percent (95% C.I.)	+20 yrs Percent (95% C.I.)	+30 yrs Percent (95% C.I.)	Eventually Percent (95% C.I.)	Eventually Percent (95% C.I.)	
All Races	0	0.00 (0.00, 0.00)	0.00 (0.00, 0.00)	0.01 (0.00, 0.01)	7.78 (7.72, 7.84)	7.08 (7.05, 7.11)	
	10	0.00 (0.00, 0.00)	0.01 (0.00, 0.01)	0.03 (0.03, 0.03)	7.88 (7.82, 7.94)	7.19 (7.16, 7.22)	
	20	0.00 (0.00, 0.01)	0.03 (0.03, 0.03)	0.21 (0.21, 0.22)	7.93 (7.86, 7.99)	7.23 (7.20, 7.26)	
	30	0.03 (0.02, 0.03)	0.21 (0.20, 0.22)	1.00 (0.98, 1.01)	8.03 (7.97, 8.09)	7.33 (7.30, 7.36)	
	40	0.19 (0.18, 0.19)	0.99 (0.97, 1.00)	3.15 (3.12, 3.18)	8.14 (8.08, 8.20)	7.44 (7.41, 7.47)	
	50	0.83 (0.81, 0.84)	3.07 (3.04, 3.10)	6.22 (6.17, 6.28)	8.24 (8.18, 8.31)	7.55 (7.52, 7.58)	
	60	2.43 (2.40, 2.46)	5.84 (5.79, 5.90)	7.72 (7.66, 7.79)	8.03 (7.96, 8.10)	7.40 (7.37, 7.43)	
	70	4.08 (4.04, 4.13)	6.33 (6.26, 6.39)	- (- , -)	6.70 (6.63, 6.77)	6.31 (6.28, 6.34)	
80	3.45 (3.40, 3.51)	- (- , -)	- (- , -)	4.02 (3.95, 4.09)	4.05 (4.02, 4.09)		
White	0	0.00 (0.00, 0.00)	0.00 (0.00, 0.00)	0.01 (0.00, 0.01)	7.86 (7.79, 7.92)	7.17 (7.14, 7.20)	
	10	0.00 (0.00, 0.00)	0.01 (0.00, 0.01)	0.03 (0.03, 0.03)	7.95 (7.88, 8.01)	7.26 (7.23, 7.29)	
	20	0.00 (0.00, 0.01)	0.03 (0.03, 0.03)	0.20 (0.19, 0.21)	7.99 (7.92, 8.06)	7.30 (7.27, 7.33)	
	30	0.02 (0.02, 0.03)	0.20 (0.19, 0.20)	0.95 (0.93, 0.96)	8.08 (8.02, 8.15)	7.39 (7.36, 7.42)	
	40	0.18 (0.17, 0.18)	0.94 (0.92, 0.95)	3.13 (3.09, 3.16)	8.19 (8.12, 8.26)	7.50 (7.47, 7.53)	
	50	0.79 (0.77, 0.80)	3.05 (3.02, 3.09)	6.28 (6.22, 6.33)	8.29 (8.22, 8.37)	7.60 (7.57, 7.63)	
	60	2.44 (2.41, 2.48)	5.92 (5.86, 5.98)	7.80 (7.73, 7.87)	8.09 (8.02, 8.17)	7.45 (7.41, 7.48)	
	70	4.14 (4.08, 4.19)	6.37 (6.30, 6.44)	- (- , -)	6.73 (6.65, 6.80)	6.34 (6.31, 6.38)	
80	3.45 (3.39, 3.51)	- (- , -)	- (- , -)	3.99 (3.92, 4.06)	4.05 (4.01, 4.08)		
Black	0	0.00 (0.00, 0.00)	0.00 (0.00, 0.00)	0.01 (0.00, 0.01)	7.75 (7.56, 7.94)	6.99 (6.91, 7.07)	
	10	0.00 (0.00, 0.00)	0.01 (0.00, 0.01)	0.04 (0.03, 0.05)	7.95 (7.76, 8.15)	7.19 (7.11, 7.27)	
	20	0.01 (0.00, 0.01)	0.04 (0.03, 0.05)	0.35 (0.33, 0.38)	8.03 (7.83, 8.23)	7.25 (7.16, 7.33)	
	30	0.03 (0.02, 0.04)	0.36 (0.33, 0.38)	1.67 (1.61, 1.74)	8.23 (8.03, 8.43)	7.41 (7.33, 7.50)	
	40	0.34 (0.31, 0.36)	1.70 (1.63, 1.76)	4.26 (4.14, 4.39)	8.47 (8.26, 8.68)	7.62 (7.53, 7.71)	
	50	1.45 (1.39, 1.52)	4.20 (4.07, 4.32)	7.09 (6.91, 7.28)	8.69 (8.47, 8.91)	7.82 (7.73, 7.91)	
	60	3.20 (3.08, 3.32)	6.58 (6.38, 6.77)	8.17 (7.94, 8.40)	8.43 (8.20, 8.68)	7.69 (7.58, 7.79)	
	70	4.54 (4.36, 4.73)	6.68 (6.44, 6.93)	- (- , -)	7.04 (6.78, 7.31)	6.56 (6.44, 6.67)	
80	3.90 (3.66, 4.15)	- (- , -)	- (- , -)	4.56 (4.27, 4.87)	4.43 (4.30, 4.57)		

Devcan Version 7.0.0, April 2008, National Cancer Institute (<http://srab.cancer.gov/devcan/>).

Source: Incidence data are from the SEER 17 areas (San Francisco, Connecticut, Detroit, Hawaii, Iowa, New Mexico, Seattle, Utah, Atlanta, San Jose-Monterey, Los Angeles, Alaska Native Registry, Rural Georgia, California excluding SF/SJM/LA, Kentucky, Louisiana and New Jersey). Mortality data are from the NCHS public use data file for the total US.

- Statistic could not be calculated.

A percent or confidence interval value of 0.00 represents a value that is below 0.005.

Table XV-15 - continued
LUNG AND BRONCHUS CANCER (Invasive)

Risk of Being Diagnosed With Cancer in 10, 20 and 30 Years, Lifetime Risk of Being Diagnosed with Cancer, and
Lifetime Risk of Dying from Cancer Given Cancer Free At Current Age
Males, 2003-2005 By Race/Ethnicity

Race/ Ethnicity	Current Age	Risk of Being Diagnosed with Cancer				Risk of Dying from Cancer	
		+10 yrs Percent (95% C.I.)	+20 yrs Percent (95% C.I.)	+30 yrs Percent (95% C.I.)	Eventually Percent (95% C.I.)	Eventually Percent (95% C.I.)	
Asian/ Pacific Islander	0	0.00 (0.00, 0.00)	0.00 (0.00, 0.00)	0.00 (0.00, 0.01)	7.03 (6.77, 7.30)	5.40 (5.21, 5.62)	
	10	0.00 (0.00, 0.00)	0.00 (0.00, 0.01)	0.03 (0.03, 0.04)	7.10 (6.84, 7.37)	5.45 (5.26, 5.67)	
	20	0.00 (0.00, 0.00)	0.03 (0.02, 0.04)	0.16 (0.15, 0.18)	7.12 (6.86, 7.39)	5.47 (5.27, 5.69)	
	30	0.03 (0.02, 0.04)	0.16 (0.15, 0.18)	0.70 (0.66, 0.74)	7.16 (6.91, 7.44)	5.50 (5.30, 5.72)	
	40	0.13 (0.12, 0.15)	0.68 (0.63, 0.72)	2.12 (2.03, 2.22)	7.19 (6.93, 7.47)	5.52 (5.32, 5.74)	
	50	0.55 (0.51, 0.59)	2.03 (1.93, 2.12)	4.68 (4.51, 4.85)	7.18 (6.92, 7.47)	5.52 (5.31, 5.74)	
	60	1.54 (1.46, 1.63)	4.31 (4.15, 4.48)	6.40 (6.17, 6.64)	6.93 (6.66, 7.22)	5.40 (5.20, 5.63)	
	70	3.09 (2.94, 3.24)	5.42 (5.19, 5.65)	- (- , -)	6.00 (5.72, 6.31)	4.89 (4.67, 5.14)	
	80	3.06 (2.86, 3.28)	- (- , -)	- (- , -)	3.84 (3.55, 4.17)	3.49 (3.24, 3.76)	
American Indian/ Alaska Native ^a	0	0.00 (0.00, 0.05)	0.00 (0.00, 0.05)	0.00 (0.00, 0.05)	5.27 (4.50, 6.37)	4.53 (4.14, 5.01)	
	10	0.00 (0.00, 0.02)	0.00 (0.00, 0.02)	0.02 (0.00, 0.06)	5.39 (4.60, 6.51)	4.64 (4.23, 5.12)	
	20	0.00 (0.00, 0.02)	0.02 (0.00, 0.06)	0.11 (0.07, 0.18)	5.44 (4.65, 6.58)	4.69 (4.28, 5.18)	
	30	0.02 (0.00, 0.05)	0.12 (0.07, 0.18)	0.70 (0.55, 0.87)	5.57 (4.75, 6.73)	4.81 (4.40, 5.32)	
	40	0.10 (0.06, 0.16)	0.71 (0.56, 0.89)	2.18 (1.84, 2.56)	5.75 (4.91, 6.95)	4.99 (4.56, 5.52)	
	50	0.64 (0.49, 0.81)	2.19 (1.84, 2.59)	4.43 (3.83, 5.11)	5.96 (5.07, 7.22)	5.19 (4.72, 5.75)	
	60	1.71 (1.38, 2.08)	4.17 (3.55, 4.88)	5.49 (4.68, 6.43)	5.85 (4.90, 7.22)	5.20 (4.70, 5.82)	
	70	2.97 (2.40, 3.65)	4.56 (3.72, 5.57)	- (- , -)	4.99 (3.97, 6.55)	4.57 (4.01, 5.29)	
	80	2.38 (1.61, 3.43)	- (- , -)	- (- , -)	3.02 (1.90, 5.11)	3.10 (2.42, 4.04)	
Hispanic ^b	0	0.00 (0.00, 0.00)	0.00 (0.00, 0.00)	0.00 (0.00, 0.01)	5.26 (5.05, 5.49)	4.25 (4.13, 4.37)	
	10	0.00 (0.00, 0.00)	0.00 (0.00, 0.01)	0.01 (0.01, 0.02)	5.33 (5.11, 5.56)	4.30 (4.18, 4.43)	
	20	0.00 (0.00, 0.01)	0.01 (0.01, 0.02)	0.09 (0.08, 0.10)	5.36 (5.14, 5.59)	4.33 (4.21, 4.45)	
	30	0.01 (0.01, 0.01)	0.09 (0.08, 0.10)	0.44 (0.41, 0.47)	5.42 (5.20, 5.65)	4.38 (4.26, 4.51)	
	40	0.08 (0.07, 0.09)	0.43 (0.41, 0.46)	1.58 (1.51, 1.65)	5.48 (5.26, 5.72)	4.43 (4.31, 4.56)	
	50	0.37 (0.34, 0.39)	1.55 (1.48, 1.62)	3.59 (3.46, 3.72)	5.57 (5.34, 5.81)	4.51 (4.38, 4.64)	
	60	1.26 (1.19, 1.33)	3.44 (3.31, 3.58)	4.99 (4.80, 5.18)	5.55 (5.31, 5.81)	4.50 (4.37, 4.64)	
	70	2.51 (2.39, 2.64)	4.30 (4.11, 4.50)	- (- , -)	4.95 (4.69, 5.23)	4.09 (3.95, 4.24)	
	80	2.51 (2.33, 2.71)	- (- , -)	- (- , -)	3.42 (3.12, 3.76)	3.00 (2.83, 3.19)	

Devcan Version 7.0.0, April 2008, National Cancer Institute (<http://srab.cancer.gov/devcan/>).

Source: Incidence data are from the SEER 17 areas (San Francisco, Connecticut, Detroit, Hawaii, Iowa, New Mexico, Seattle, Utah, Atlanta, San Jose-Monterey, Los Angeles, Alaska Native Registry, Rural Georgia, California excluding SF/SJM/LA, Kentucky, Louisiana and New Jersey). Mortality data are from the NCHS public use data file for the total US.

^a Underlying incidence and mortality data for American Indian/Alaska Native are based on the CHSDA (Contract Health Service Delivery Area) counties.

^b Hispanic is not mutually exclusive from whites, blacks, Asian/Pacific Islanders, and American Indians/Alaska Natives. Underlying incidence data for Hispanics are based on NHIA and exclude cases from the Alaska Native Registry and Kentucky. Underlying mortality data for Hispanics exclude deaths from Minnesota, New Hampshire and North Dakota.

- Statistic could not be calculated.

A percent or confidence interval value of 0.00 represents a value that is below 0.005.

Table XV-15 - continued
 LUNG AND BRONCHUS CANCER (Invasive)

Risk of Being Diagnosed With Cancer in 10, 20 and 30 Years, Lifetime Risk of Being Diagnosed with Cancer, and
 Lifetime Risk of Dying from Cancer Given Cancer Free At Current Age
 Females, 2003-2005 By Race/Ethnicity

Race/ Ethnicity	Current Age	Risk of Being Diagnosed with Cancer						Risk of Dying from Cancer	
		+10 yrs Percent (95% C.I.)	+20 yrs Percent (95% C.I.)	+30 yrs Percent (95% C.I.)	Eventually Percent (95% C.I.)	Eventually Percent (95% C.I.)			
All Races	0	0.00 (0.00, 0.00)	0.00 (0.00, 0.00)	0.01 (0.00, 0.01)	6.22 (6.17, 6.27)	5.02 (4.99, 5.04)			
	10	0.00 (0.00, 0.00)	0.01 (0.00, 0.01)	0.03 (0.03, 0.04)	6.29 (6.24, 6.34)	5.08 (5.06, 5.10)			
	20	0.00 (0.00, 0.01)	0.03 (0.03, 0.04)	0.21 (0.21, 0.22)	6.31 (6.25, 6.36)	5.09 (5.07, 5.11)			
	30	0.03 (0.03, 0.03)	0.21 (0.20, 0.21)	0.83 (0.82, 0.84)	6.33 (6.28, 6.38)	5.12 (5.10, 5.14)			
	40	0.18 (0.18, 0.19)	0.81 (0.79, 0.82)	2.47 (2.44, 2.50)	6.36 (6.31, 6.41)	5.15 (5.13, 5.17)			
	50	0.64 (0.63, 0.65)	2.33 (2.31, 2.36)	4.70 (4.66, 4.74)	6.31 (6.26, 6.37)	5.13 (5.11, 5.15)			
	60	1.78 (1.76, 1.81)	4.26 (4.22, 4.31)	5.69 (5.64, 5.74)	5.96 (5.90, 6.01)	4.89 (4.87, 4.91)			
	70	2.80 (2.76, 2.83)	4.40 (4.36, 4.45)	- (- , -)	4.70 (4.65, 4.75)	3.97 (3.95, 3.99)			
80	2.16 (2.13, 2.20)	- (- , -)	- (- , -)	2.56 (2.52, 2.60)	2.34 (2.32, 2.36)				
White	0	0.00 (0.00, 0.00)	0.00 (0.00, 0.00)	0.01 (0.01, 0.01)	6.52 (6.46, 6.57)	5.21 (5.18, 5.23)			
	10	0.00 (0.00, 0.00)	0.01 (0.01, 0.01)	0.03 (0.03, 0.04)	6.58 (6.52, 6.64)	5.26 (5.24, 5.29)			
	20	0.01 (0.00, 0.01)	0.03 (0.03, 0.04)	0.21 (0.20, 0.22)	6.59 (6.54, 6.65)	5.28 (5.25, 5.30)			
	30	0.03 (0.03, 0.03)	0.21 (0.20, 0.21)	0.84 (0.82, 0.86)	6.62 (6.56, 6.68)	5.30 (5.28, 5.32)			
	40	0.18 (0.17, 0.19)	0.82 (0.80, 0.83)	2.59 (2.55, 2.62)	6.65 (6.59, 6.70)	5.33 (5.30, 5.35)			
	50	0.65 (0.64, 0.66)	2.45 (2.42, 2.49)	4.96 (4.91, 5.01)	6.60 (6.54, 6.66)	5.30 (5.28, 5.33)			
	60	1.89 (1.86, 1.92)	4.52 (4.47, 4.57)	5.97 (5.91, 6.03)	6.23 (6.17, 6.29)	5.05 (5.02, 5.07)			
	70	2.96 (2.92, 3.00)	4.59 (4.54, 4.65)	- (- , -)	4.88 (4.82, 4.93)	4.08 (4.05, 4.10)			
80	2.20 (2.17, 2.24)	- (- , -)	- (- , -)	2.59 (2.55, 2.64)	2.37 (2.35, 2.40)				
Black	0	0.00 (0.00, 0.00)	0.00 (0.00, 0.00)	0.00 (0.00, 0.01)	5.45 (5.30, 5.60)	4.18 (4.12, 4.24)			
	10	0.00 (0.00, 0.00)	0.00 (0.00, 0.01)	0.04 (0.03, 0.04)	5.57 (5.41, 5.72)	4.27 (4.21, 4.33)			
	20	0.00 (0.00, 0.01)	0.04 (0.03, 0.04)	0.30 (0.28, 0.33)	5.58 (5.43, 5.74)	4.29 (4.22, 4.35)			
	30	0.03 (0.03, 0.04)	0.30 (0.28, 0.32)	1.07 (1.03, 1.12)	5.63 (5.47, 5.78)	4.32 (4.26, 4.38)			
	40	0.27 (0.25, 0.29)	1.06 (1.01, 1.11)	2.64 (2.55, 2.73)	5.69 (5.53, 5.85)	4.37 (4.31, 4.44)			
	50	0.82 (0.78, 0.86)	2.47 (2.38, 2.56)	4.40 (4.27, 4.53)	5.65 (5.49, 5.82)	4.37 (4.31, 4.44)			
	60	1.81 (1.73, 1.89)	3.92 (3.79, 4.06)	5.06 (4.90, 5.22)	5.29 (5.12, 5.46)	4.14 (4.08, 4.21)			
	70	2.53 (2.42, 2.65)	3.90 (3.75, 4.06)	- (- , -)	4.17 (4.01, 4.35)	3.38 (3.32, 3.45)			
80	2.04 (1.91, 2.17)	- (- , -)	- (- , -)	2.44 (2.29, 2.61)	2.11 (2.05, 2.18)				

Devcan Version 7.0.0, April 2008, National Cancer Institute (<http://srab.cancer.gov/devcan/>).

Source: Incidence data are from the SEER 17 areas (San Francisco, Connecticut, Detroit, Hawaii, Iowa, New Mexico, Seattle, Utah, Atlanta, San Jose-Monterey, Los Angeles, Alaska Native Registry, Rural Georgia, California excluding SF/SJM/LA, Kentucky, Louisiana and New Jersey). Mortality data are from the NCHS public use data file for the total US.

- Statistic could not be calculated.

A percent or confidence interval value of 0.00 represents a value that is below 0.005.

Table XV-15 - continued
LUNG AND BRONCHUS CANCER (Invasive)

Risk of Being Diagnosed With Cancer in 10, 20 and 30 Years, Lifetime Risk of Being Diagnosed with Cancer, and
Lifetime Risk of Dying from Cancer Given Cancer Free At Current Age
Females, 2003-2005 By Race/Ethnicity

Race/ Ethnicity	Current Age	Risk of Being Diagnosed with Cancer				Risk of Dying from Cancer	
		+10 yrs Percent (95% C.I.)	+20 yrs Percent (95% C.I.)	+30 yrs Percent (95% C.I.)	Eventually Percent (95% C.I.)	Eventually Percent (95% C.I.)	
Asian/ Pacific Islander	0	0.00 (0.00, 0.00)	0.00 (0.00, 0.01)	0.00 (0.00, 0.01)	4.28 (4.08, 4.50)	3.14 (2.98, 3.30)	
	10	0.00 (0.00, 0.00)	0.00 (0.00, 0.01)	0.03 (0.02, 0.04)	4.31 (4.11, 4.54)	3.16 (3.01, 3.33)	
	20	0.00 (0.00, 0.01)	0.03 (0.02, 0.04)	0.13 (0.12, 0.15)	4.32 (4.12, 4.54)	3.17 (3.01, 3.34)	
	30	0.02 (0.02, 0.03)	0.13 (0.11, 0.14)	0.47 (0.43, 0.50)	4.33 (4.13, 4.55)	3.17 (3.02, 3.34)	
	40	0.10 (0.09, 0.12)	0.44 (0.41, 0.48)	1.24 (1.18, 1.31)	4.32 (4.12, 4.55)	3.17 (3.02, 3.35)	
	50	0.34 (0.32, 0.37)	1.15 (1.09, 1.22)	2.48 (2.37, 2.59)	4.27 (4.06, 4.49)	3.15 (2.99, 3.32)	
	60	0.83 (0.78, 0.89)	2.20 (2.09, 2.30)	3.48 (3.33, 3.64)	4.03 (3.82, 4.26)	3.03 (2.87, 3.20)	
	70	1.46 (1.37, 1.55)	2.83 (2.68, 2.98)	- (- , -)	3.42 (3.21, 3.65)	2.70 (2.54, 2.88)	
	80	1.63 (1.51, 1.77)	- (- , -)	- (- , -)	2.33 (2.11, 2.58)	1.98 (1.80, 2.17)	
American Indian/ Alaska Native ^a	0	0.00 (0.00, 0.05)	0.00 (0.00, 0.05)	0.00 (0.00, 0.05)	4.87 (4.22, 5.77)	3.73 (3.41, 4.10)	
	10	0.00 (0.00, 0.02)	0.00 (0.00, 0.02)	0.01 (0.00, 0.05)	4.95 (4.29, 5.87)	3.79 (3.47, 4.17)	
	20	0.00 (0.00, 0.02)	0.02 (0.00, 0.05)	0.12 (0.07, 0.18)	4.98 (4.31, 5.90)	3.81 (3.49, 4.20)	
	30	0.02 (0.00, 0.05)	0.12 (0.07, 0.18)	0.60 (0.46, 0.75)	5.03 (4.35, 5.95)	3.85 (3.53, 4.24)	
	40	0.10 (0.06, 0.16)	0.59 (0.46, 0.75)	1.87 (1.57, 2.21)	5.10 (4.42, 6.05)	3.92 (3.58, 4.31)	
	50	0.50 (0.38, 0.65)	1.82 (1.52, 2.17)	3.85 (3.32, 4.44)	5.15 (4.45, 6.13)	3.96 (3.61, 4.37)	
	60	1.40 (1.13, 1.71)	3.54 (3.01, 4.15)	4.79 (4.10, 5.58)	4.93 (4.21, 5.94)	3.90 (3.54, 4.33)	
	70	2.47 (2.00, 3.03)	3.91 (3.22, 4.72)	- (- , -)	4.07 (3.34, 5.15)	3.08 (2.72, 3.53)	
	80	1.93 (1.36, 2.66)	- (- , -)	- (- , -)	2.14 (1.51, 3.32)	1.72 (1.38, 2.20)	
Hispanic ^b	0	0.00 (0.00, 0.00)	0.00 (0.00, 0.00)	0.01 (0.00, 0.01)	3.63 (3.47, 3.80)	2.25 (2.18, 2.34)	
	10	0.00 (0.00, 0.00)	0.01 (0.00, 0.01)	0.02 (0.02, 0.02)	3.66 (3.51, 3.84)	2.28 (2.20, 2.36)	
	20	0.00 (0.00, 0.01)	0.02 (0.01, 0.02)	0.09 (0.08, 0.10)	3.67 (3.51, 3.84)	2.28 (2.21, 2.37)	
	30	0.01 (0.01, 0.02)	0.09 (0.08, 0.10)	0.37 (0.34, 0.39)	3.68 (3.52, 3.85)	2.29 (2.21, 2.37)	
	40	0.07 (0.07, 0.08)	0.35 (0.33, 0.38)	1.11 (1.05, 1.16)	3.69 (3.53, 3.86)	2.30 (2.22, 2.38)	
	50	0.29 (0.26, 0.31)	1.05 (0.99, 1.10)	2.29 (2.20, 2.39)	3.67 (3.51, 3.85)	2.29 (2.21, 2.38)	
	60	0.79 (0.74, 0.84)	2.08 (1.99, 2.18)	3.13 (3.00, 3.27)	3.51 (3.35, 3.69)	2.24 (2.16, 2.33)	
	70	1.41 (1.33, 1.49)	2.56 (2.43, 2.69)	- (- , -)	2.98 (2.81, 3.16)	2.02 (1.94, 2.11)	
	80	1.44 (1.33, 1.57)	- (- , -)	- (- , -)	1.97 (1.79, 2.17)	1.49 (1.40, 1.59)	

Devcan Version 7.0.0, April 2008, National Cancer Institute (<http://srab.cancer.gov/devcan/>).

Source: Incidence data are from the SEER 17 areas (San Francisco, Connecticut, Detroit, Hawaii, Iowa, New Mexico, Seattle, Utah, Atlanta, San Jose-Monterey, Los Angeles, Alaska Native Registry, Rural Georgia, California excluding SF/SJM/LA, Kentucky, Louisiana and New Jersey). Mortality data are from the NCHS public use data file for the total US.

^a Underlying incidence and mortality data for American Indian/Alaska Native are based on the CHSDA (Contract Health Service Delivery Area) counties.

^b Hispanic is not mutually exclusive from whites, blacks, Asian/Pacific Islanders, and American Indians/Alaska Natives. Underlying incidence data for Hispanics are based on NHIA and exclude cases from the Alaska Native Registry and Kentucky. Underlying mortality data for Hispanics exclude deaths from Minnesota, New Hampshire and North Dakota.

- Statistic could not be calculated.

A percent or confidence interval value of 0.00 represents a value that is below 0.005.

Table XV-16
LUNG AND BRONCHUS (Invasive)

SEER INCIDENCE AND U.S. MORTALITY
AGE-ADJUSTED RATES AND TRENDS^a
By Race/Ethnicity and Sex

SEER Incidence	Rate 2001-2005 ^b			Seer 13 Areas ^c Trend 1996-2005 AAPC (%)			SEER 9 Areas ^d Trend 1996-2005 AAPC (%)		
	Rate per 100,000 persons			Total	Males	Females	Total	Males	Females
	Total	Males	Females	Total	Males	Females	Total	Males	Females
RACE/ETHNICITY									
All Races	63.9	79.4	52.6	-1.2*	-2.1*	-0.4*	-0.8*	-1.9*	0.1
White	65.1	79.3	54.9	-1.1*	-2.0*	-0.5*	-0.7*	-1.8*	0.0
White Hispanic ^e	33.9	44.8	26.0	-1.8*	-2.3*	-1.2*	-	-	-
White Non-Hispanic ^e	66.6	79.5	57.3	-0.9*	-1.9*	-0.2	-	-	-
Black	76.0	107.6	54.6	-1.4*	-2.6*	0.6*	-1.0*	-3.5*	0.4
Asian/Pacific Islander	39.1	53.9	28.0	-0.7*	-1.2*	0.4	-	-	-
Amer Ind/Alaska Nat ^f	46.0	54.3	39.7	-0.3	-2.4*	2.6*	-	-	-
Hispanic ^e	33.3	44.2	25.4	-1.6*	-2.1*	-1.1*	-	-	-
U.S. Mortality ^g									
	Rate 2001-2005			Trend 1996-2005 ^h					
	Rate per 100,000 persons			AAPC (%)					
	Total	Males	Females	Total	Males	Females			
RACE/ETHNICITY									
All Races	54.1	72.0	41.0	-0.9*	-1.9*	0.1			
White	54.4	71.3	42.0	-0.7*	-1.8*	0.2			
White Hispanic ^e	24.0	36.1	15.1	-1.7*	-2.6*	-0.1			
White Non-Hispanic ^e	56.9	74.2	44.3	-0.6*	-1.6*	0.4			
Black	60.9	93.1	39.9	-1.7*	-2.8*	0.4*			
Asian/Pacific Islander	26.6	37.5	18.5	-1.3*	-1.7*	-0.5			
Amer Ind/Alaska Nat									
Total U.S.	34.8	42.5	28.8	-0.7	-2.3*	1.4*			
CHSDA Counties	40.9	50.2	33.8	0.1	-1.3*	1.8*			
Non-CHSDA Counties	27.0	33.0	22.3	-1.4	-3.6*	1.0			
Hispanic ^e	23.2	35.1	14.6	-1.7*	-2.6*	-0.1			

The AAPC is the Average Annual Percent Change over the time interval. The AAPCs are calculated by the Joinpoint Regression Program Version 3.3, April 2008, National Cancer Institute.

Statistic not shown. Rate based on less than 16 cases for the time interval. Trend based on less than 10 cases for at least one year within the time interval.

Rates are age-adjusted to the 2000 US Std Population (19 age groups - Census P25-1130). Trends are based on rates age-adjusted to the 2000 US Std Population (19 age groups - Census P25-1130).

Incidence data used in calculating the 2001-2005 rates are from the SEER 17 areas (San Francisco, Connecticut, Detroit, Hawaii, Iowa, New Mexico, Seattle, Utah, Atlanta, San Jose-Monterey, Los Angeles, Alaska Native Registry, Rural Georgia, California excluding SF/SJM/LA, Kentucky, Louisiana and New Jersey).

The SEER 13 areas are San Francisco, Connecticut, Detroit, Hawaii, Iowa, New Mexico, Seattle, Utah, Atlanta, San Jose-Monterey, Los Angeles, Alaska Native Registry and Rural Georgia. The 1996-2005 AAPC trends are based on a Joinpoint analysis using diagnosis years 1992-2005.

The SEER 9 areas are San Francisco, Connecticut, Detroit, Hawaii, Iowa, New Mexico, Seattle, Utah, and Atlanta. The 1996-2005 AAPC trends are based on a Joinpoint analysis using diagnosis years 1975-2005.

Hispanic and Non-Hispanic are not mutually exclusive from whites, blacks, Asian/Pacific Islanders, and American Indians/Alaska Natives. Incidence data for Hispanics and Non-Hispanics are based on NHIA and exclude cases from the Alaska Native Registry and Kentucky. The 2001-2005 Hispanic and Non-Hispanic death rates exclude deaths from Minnesota, New Hampshire and North Dakota. The 1996-2005 Hispanic and Non-Hispanic mortality trends exclude deaths from Connecticut, Maine, Maryland, Minnesota, New Hampshire, New York, North Dakota, Oklahoma and Vermont.

Incidence data for American Indian/Alaska Native are based on the CHSDA(Contract Health Service Delivery Area) counties.

US Mortality Files, National Center for Health Statistics, CDC.

The 1996-2005 mortality AAPCs are based on a Joinpoint analysis using years of death 1992-2005.

The APC is significantly different from zero (p<.05).

Table XV-17
LUNG AND BRONCHUS CANCER (Invasive)

AGE-ADJUSTED SEER INCIDENCE RATES^a
By Registry, Race and Sex

	All Races			Whites			Blacks		
	Total	Males	Females	Total	Males	Females	Total	Males	Females
<u>SEER INCIDENCE RATES^a, 2001-2005</u>									
REGISTRY									
Atlanta & Rural Georgia	61.7	82.4	47.9	62.1	79.0	50.6	64.2	98.5	44.0
Atlanta	61.2	81.3	47.9	61.4	78.0	50.4	64.3	97.9	44.7
Rural Georgia	73.1	103.7	49.5	75.7	99.0	55.8	67.2	113.2	37.9
California	55.7	67.0	47.5	57.2	67.0	50.1	71.7	95.5	54.7
Greater Bay Area	52.6	62.2	45.8	53.7	60.4	49.3	76.7	96.5	62.6
San Francisco-Oakland	54.7	64.9	47.6	55.2	61.9	50.8	79.8	100.4	65.3
San Jose-Monterey	48.4	56.8	42.4	51.1	57.7	46.7	56.9	77.0	41.4
Los Angeles	48.9	61.3	39.9	48.2	58.2	40.9	71.2	98.5	52.6
Greater California	60.2	71.3	51.9	62.0	72.5	54.2	69.1	91.5	52.2
Connecticut	68.5	82.5	58.8	69.5	83.0	60.1	61.8	85.6	46.7
Detroit	81.1	101.9	66.7	79.8	97.7	67.7	90.3	125.6	66.6
Hawaii	51.9	67.8	38.9	62.2	73.8	51.7	29.5	-	-
Iowa	67.8	89.3	52.4	67.6	88.9	52.4	101.9	143.5	67.7
Kentucky	101.2	136.2	76.2	101.5	136.4	76.3	105.2	144.4	79.5
Louisiana	80.6	111.4	58.2	80.3	106.1	61.4	82.5	130.5	50.2
New Jersey	66.1	80.8	55.9	67.2	80.6	58.0	70.0	97.1	52.6
New Mexico	47.5	59.1	38.5	49.8	61.3	40.8	51.6	71.7	36.9
Seattle-Puget Sound	69.1	80.9	60.5	70.4	81.0	62.8	80.7	111.2	55.6
Utah	30.2	39.6	22.4	30.1	39.6	22.3	47.7	-	-
9 SEER Areas ^b	62.7	77.7	51.9	63.5	77.0	53.9	77.0	107.3	56.8
11 SEER Areas ^b	58.8	72.9	48.6	59.6	72.1	50.7	75.2	104.4	55.5
13 SEER Areas ^b	58.9	73.0	48.7	59.7	72.2	50.7	75.0	104.4	55.2
17 SEER Areas ^b	63.9	79.4	52.6	65.1	79.3	54.9	76.0	107.6	54.6

^a Rates are per 100,000 and are age-adjusted to the 2000 US Std Population (19 age groups - Census P25-1130)

^b The SEER 9 areas are San Francisco, Connecticut, Detroit, Hawaii, Iowa, New Mexico, Seattle, Utah and Atlanta.

The SEER 11 areas comprise the SEER 9 areas plus San Jose-Monterey and Los Angeles.

The SEER 13 areas comprise the SEER 11 areas plus the Alaska Native Registry and Rural Georgia.

The SEER 17 areas comprise the SEER 13 areas plus California excluding SF/SJM/LA, Kentucky, Louisiana and New Jersey.

- Statistic not shown. Rate based on less than 16 cases for the time interval.

Table XV-18
LUNG AND BRONCHUS CANCER (Invasive)

AGE-ADJUSTED SEER DEATH RATES^a
By Registry, Race and Sex

	All Races			Whites			Blacks		
	Total	Males	Females	Total	Males	Females	Total	Males	Females
<u>SEER DEATH RATES^a, 2001-2005</u>									
REGISTRY									
Atlanta & Rural Georgia	48.6	68.5	35.6	48.6	65.6	37.2	51.0	82.3	32.7
Atlanta	48.1	67.1	35.7	48.0	64.5	37.2	50.6	80.2	33.3
Rural Georgia	59.8	93.7	34.7	60.7	87.6	39.1	58.5	109.3	27.4
California	44.1	54.8	36.3	45.6	55.2	38.5	58.7	81.6	42.7
Greater Bay Area	41.3	50.2	35.0	42.8	49.6	38.3	65.9	89.3	49.4
San Francisco-Oakland	43.3	52.9	36.4	44.5	51.4	39.8	68.1	91.3	52.0
San Jose-Monterey	37.4	44.9	32.1	39.9	46.6	35.5	52.4	84.9	27.5
Los Angeles	38.8	50.2	30.4	38.2	47.9	31.2	57.1	80.9	41.1
Greater California	47.7	58.6	39.7	49.3	59.8	41.6	56.0	78.1	39.9
Connecticut	49.0	62.0	40.2	49.7	62.3	41.1	45.8	67.0	33.3
Detroit	58.0	75.8	45.9	56.8	72.6	46.2	65.5	93.0	47.2
Hawaii	36.8	49.8	26.2	46.8	55.8	38.3	-	-	-
Iowa	52.7	72.6	38.4	52.5	72.4	38.4	81.9	111.0	58.4
Kentucky	79.0	111.5	55.9	79.2	111.7	56.1	82.3	118.7	58.5
Louisiana	67.0	95.9	46.3	65.3	89.4	47.8	73.1	119.4	42.4
New Jersey	50.3	64.8	40.4	50.9	64.7	41.6	57.0	82.2	41.1
New Mexico	38.0	48.8	29.7	39.8	50.6	31.5	43.4	67.9	26.4
Seattle-Puget Sound	52.7	63.4	45.0	54.3	64.3	47.1	59.8	84.6	39.2
Utah	24.4	33.7	16.9	24.4	33.7	16.8	38.0	-	-
9 SEER Areas ^b	47.3	61.0	37.6	48.2	60.9	39.2	59.0	84.9	41.9
11 SEER Areas ^b	44.9	57.7	35.6	45.7	57.5	37.3	58.4	83.8	41.5
13 SEER Areas ^b	45.0	57.9	35.7	45.8	57.6	37.3	58.4	84.1	41.3
17 SEER Areas ^b	49.7	64.3	39.1	50.7	64.3	40.8	61.4	90.6	42.0
Total U.S.	54.1	72.0	41.0	54.4	71.3	42.0	60.9	93.1	39.9

^a US Mortality Files, National Center for Health Statistics, Centers for Disease Control and Prevention. Rates are per 100,000 and are age-adjusted to the 2000 US Std Population (19 age groups - Census P25-1130).

^b The SEER 9 areas are San Francisco, Connecticut, Detroit, Hawaii, Iowa, New Mexico, Seattle, Utah and Atlanta.
The SEER 11 areas comprise the SEER 9 areas plus San Jose-Monterey and Los Angeles.

The SEER 13 areas comprise the SEER 11 areas plus the Alaska Native Registry and Rural Georgia.

The SEER 17 areas comprise the SEER 13 areas plus California excluding SF/SJM/LA, Kentucky, Louisiana and New Jersey.

- Statistic not shown. Rate based on less than 16 cases for the time interval.

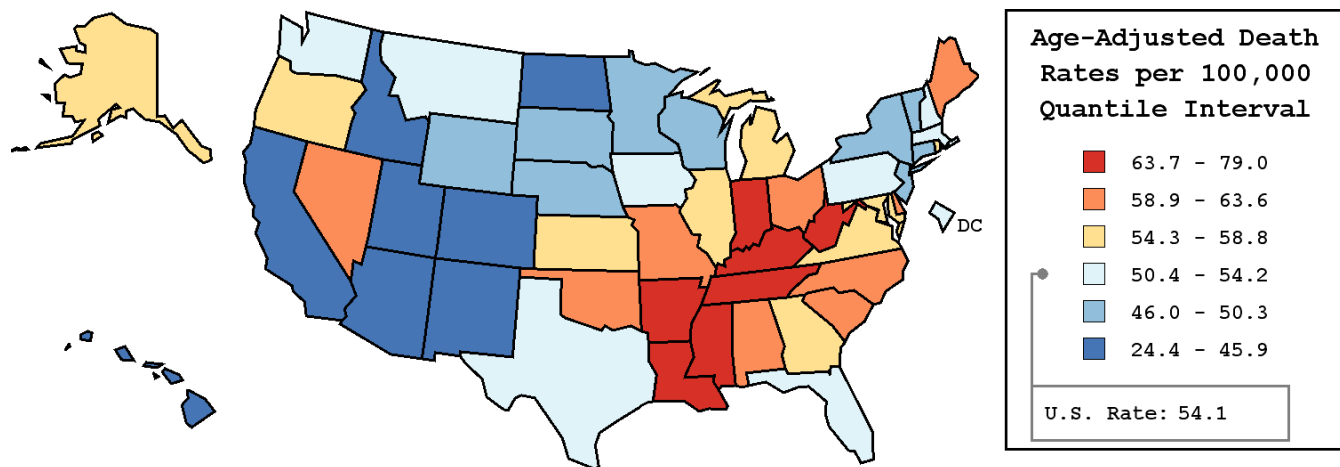
Table XV-19
LUNG AND BRONCHUS CANCER (Invasive)

AVERAGE ANNUAL AGE-ADJUSTED CANCER DEATH^a RATES BY STATE, ALL RACES, 2001-2005

Males and Females

State	Rate	SE	Rank	PD
TOTAL U.S.	54.1	0.06		
High Five States				
Kentucky	79.0 ^b	0.61	(01)	46.0 ^c
Arkansas	69.2 ^b	0.68	(02)	27.9 ^c
Tennessee	68.8 ^b	0.48	(03)	27.2 ^c
West Virginia	68.3 ^b	0.79	(04)	26.2 ^c
Mississippi	67.3 ^b	0.69	(05)	24.4 ^c
Low Five States				
Idaho	44.1 ^b	0.84	(47)	-18.5 ^c
Colorado	40.8 ^b	0.47	(48)	-24.6 ^c
New Mexico	38.0 ^b	0.65	(49)	-29.8 ^c
Hawaii	36.8 ^b	0.74	(50)	-32.0 ^c
Utah	24.4 ^b	0.54	(51)	-54.9 ^c

State	Rate	SE	Rank	PD	State	Rate	SE	Rank	PD
Alabama	63.6 ^b	0.52	(09)	17.6 ^c	Montana	53.3	1.03	(31)	-1.5
Alaska	54.7	1.80	(25)	1.1	Nebraska	49.2 ^b	0.74	(38)	-9.1 ^c
Arizona	45.9 ^b	0.40	(44)	-15.2 ^c	Nevada	59.4 ^b	0.77	(16)	9.8 ^c
Arkansas	69.2 ^b	0.68	(02)	27.9 ^c	New Hampshire	54.2	0.92	(26)	0.2
California	44.1 ^b	0.17	(46)	-18.5 ^c	New Jersey	50.3 ^b	0.33	(35)	-7.0 ^c
Colorado	40.8 ^b	0.47	(48)	-24.6 ^c	New Mexico	38.0 ^b	0.65	(49)	-29.8 ^c
Connecticut	49.0 ^b	0.51	(40)	-9.4 ^c	New York	47.1 ^b	0.22	(42)	-12.9 ^c
Delaware	62.2 ^b	1.20	(11)	15.0 ^c	North Carolina	59.5 ^b	0.38	(15)	10.0 ^c
D.C.	52.1	1.35	(34)	-3.7	North Dakota	45.5 ^b	1.13	(45)	-15.9 ^c
Florida	54.2	0.22	(27)	0.2	Ohio	60.5 ^b	0.32	(14)	11.8 ^c
Georgia	58.8 ^b	0.41	(17)	8.7 ^c	Oklahoma	63.6 ^b	0.59	(08)	17.6 ^c
Hawaii	36.8 ^b	0.74	(50)	-32.0 ^c	Oregon	55.1	0.55	(22)	1.8
Idaho	44.1 ^b	0.84	(47)	-18.5 ^c	Pennsylvania	54.1	0.27	(28)	0.0
Illinois	55.3 ^b	0.30	(21)	2.2	Rhode Island	54.9	0.97	(24)	1.5
Indiana	63.9 ^b	0.45	(07)	18.1 ^c	South Carolina	60.6 ^b	0.54	(13)	12.0 ^c
Iowa	52.7	0.56	(33)	-2.6	South Dakota	49.5 ^b	1.08	(37)	-8.5 ^c
Kansas	55.0	0.63	(23)	1.7	Tennessee	68.8 ^b	0.48	(03)	27.2 ^c
Kentucky	79.0 ^b	0.61	(01)	46.0 ^c	Texas	53.0 ^b	0.24	(32)	-2.0
Louisiana	67.0 ^b	0.56	(06)	23.8 ^c	Utah	24.4 ^b	0.54	(51)	-54.9 ^c
Maine	61.4 ^b	0.90	(12)	13.5 ^c	Vermont	49.7 ^b	1.23	(36)	-8.1 ^c
Maryland	56.1 ^b	0.47	(20)	3.7	Virginia	56.8 ^b	0.41	(18)	5.0 ^c
Massachusetts	53.6	0.40	(30)	-0.9	Washington	53.6	0.43	(29)	-0.9
Michigan	56.7 ^b	0.34	(19)	4.8	West Virginia	68.3 ^b	0.79	(04)	26.2 ^c
Minnesota	46.6 ^b	0.44	(43)	-13.9 ^c	Wisconsin	49.1 ^b	0.42	(39)	-9.2 ^c
Mississippi	67.3 ^b	0.69	(05)	24.4 ^c	Wyoming	47.2 ^b	1.38	(41)	-12.8 ^c
Missouri	63.2 ^b	0.46	(10)	16.8 ^c					



^a US Mortality Files, National Center for Health Statistics, Centers for Disease Control and Prevention. Rates are per 100,000 and are age-adjusted to the 2000 US Std Population (19 age groups - Census P25-1130).

^b Difference between state rate and total U.S. rate is statistically significant ($p \leq .0002$).

^c Absolute percent difference between state rate and total U.S. rate is 5% or more.

SE Standard error of the rate.

PD Percent difference between state rate and total U.S. rate.

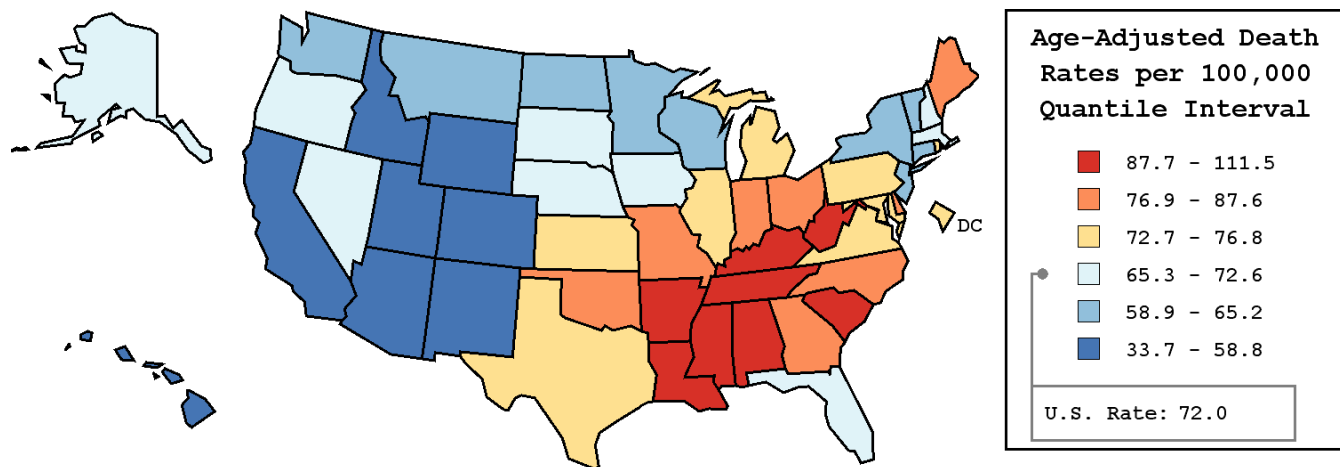
Table XV-20
LUNG AND BRONCHUS CANCER (Invasive)

AVERAGE ANNUAL AGE-ADJUSTED CANCER DEATH^a RATES BY STATE, ALL RACES, 2001-2005

Males

State	Rate	SE	Rank	PD
TOTAL U.S.	72.0	0.11		
High Five States				
Kentucky	111.5 ^b	1.14	(01)	54.9 ^c
Mississippi	101.3 ^b	1.32	(02)	40.7 ^c
Tennessee	99.9 ^b	0.91	(03)	38.8 ^c
Arkansas	99.0 ^b	1.25	(04)	37.5 ^c
Louisiana	95.9 ^b	1.05	(05)	33.2 ^c
Low Five States				
California	54.8 ^b	0.29	(47)	-23.9 ^c
Colorado	51.0 ^b	0.82	(48)	-29.2 ^c
Hawaii	49.8 ^b	1.28	(49)	-30.8 ^c
New Mexico	48.8 ^b	1.11	(50)	-32.2 ^c
Utah	33.7 ^b	0.95	(51)	-53.2 ^c

State	Rate	SE	Rank	PD	State	Rate	SE	Rank	PD
Alabama	94.8 ^b	0.99	(06)	31.7 ^c	Montana	64.9 ^b	1.70	(36)	-9.9 ^c
Alaska	67.1	3.03	(32)	-6.8 ^c	Nebraska	66.9 ^b	1.31	(33)	-7.1 ^c
Arizona	57.2 ^b	0.67	(45)	-20.6 ^c	Nevada	68.3	1.23	(28)	-5.1 ^c
Arkansas	99.0 ^b	1.25	(04)	37.5 ^c	New Hampshire	67.4	1.58	(30)	-6.4 ^c
California	54.8 ^b	0.29	(47)	-23.9 ^c	New Jersey	64.8 ^b	0.59	(37)	-10.0 ^c
Colorado	51.0 ^b	0.82	(48)	-29.2 ^c	New Mexico	48.8 ^b	1.11	(50)	-32.2 ^c
Connecticut	62.0 ^b	0.89	(40)	-13.9 ^c	New York	61.0 ^b	0.39	(41)	-15.3 ^c
Delaware	80.5 ^b	2.11	(15)	11.8 ^c	North Carolina	85.1 ^b	0.71	(13)	18.2 ^c
D.C.	76.3	2.61	(18)	6.0 ^c	North Dakota	60.5 ^b	1.95	(42)	-16.0 ^c
Florida	69.8 ^b	0.38	(27)	-3.1	Ohio	82.4 ^b	0.57	(14)	14.4 ^c
Georgia	86.0 ^b	0.78	(12)	19.4 ^c	Oklahoma	87.6 ^b	1.06	(09)	21.7 ^c
Hawaii	49.8 ^b	1.28	(49)	-30.8 ^c	Oregon	66.5 ^b	0.91	(34)	-7.6 ^c
Idaho	55.9 ^b	1.41	(46)	-22.4 ^c	Pennsylvania	73.7	0.49	(22)	2.4
Illinois	74.3 ^b	0.54	(20)	3.2	Rhode Island	72.8	1.72	(24)	1.1
Indiana	87.2 ^b	0.83	(10)	21.1 ^c	South Carolina	88.9 ^b	1.02	(08)	23.5 ^c
Iowa	72.6	1.00	(26)	0.8	South Dakota	67.6	1.90	(29)	-6.1 ^c
Kansas	73.7	1.11	(21)	2.4	Tennessee	99.9 ^b	0.91	(03)	38.8 ^c
Kentucky	111.5 ^b	1.14	(01)	54.9 ^c	Texas	72.7	0.44	(25)	1.0
Louisiana	95.9 ^b	1.05	(05)	33.2 ^c	Utah	33.7 ^b	0.95	(51)	-53.2 ^c
Maine	79.5 ^b	1.58	(16)	10.4 ^c	Vermont	64.6	2.16	(38)	-10.3 ^c
Maryland	73.1	0.83	(23)	1.5	Virginia	76.8 ^b	0.74	(17)	6.7 ^c
Massachusetts	67.3 ^b	0.69	(31)	-6.5 ^c	Washington	65.2 ^b	0.73	(35)	-9.4 ^c
Michigan	74.5 ^b	0.59	(19)	3.5	West Virginia	92.8 ^b	1.42	(07)	28.9 ^c
Minnesota	59.5 ^b	0.75	(43)	-17.4 ^c	Wisconsin	64.3 ^b	0.73	(39)	-10.7 ^c
Mississippi	101.3 ^b	1.32	(02)	40.7 ^c	Wyoming	58.8 ^b	2.33	(44)	-18.3 ^c
Missouri	87.2 ^b	0.83	(11)	21.1 ^c					



^a US Mortality Files, National Center for Health Statistics, Centers for Disease Control and Prevention. Rates are per 100,000 and are age-adjusted to the 2000 US Std Population (19 age groups - Census P25-1130).
^b Difference between state rate and total U.S. rate is statistically significant (p<=.0002).
^c Absolute percent difference between state rate and total U.S. rate is 5% or more.
SE Standard error of the rate.
PD Percent difference between state rate and total U.S. rate.

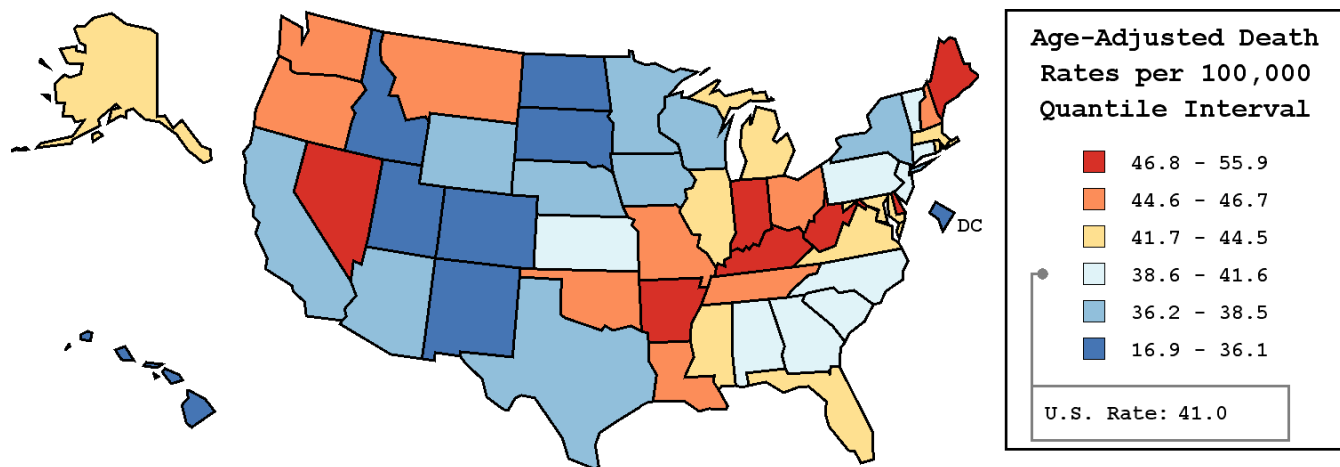
Table XV-21
LUNG AND BRONCHUS CANCER (Invasive)

AVERAGE ANNUAL AGE-ADJUSTED CANCER DEATH^a RATES BY STATE, ALL RACES, 2001-2005

Females

State	Rate	SE	Rank	PD
TOTAL U.S.	41.0	0.07		
High Five States				
Kentucky	55.9 ^b	0.69	(01)	36.3 ^c
Nevada	51.9 ^b	0.97	(02)	26.6 ^c
West Virginia	50.6 ^b	0.91	(03)	23.4 ^c
Delaware	48.7 ^b	1.42	(04)	18.8 ^c
Maine	48.4 ^b	1.07	(05)	18.0 ^c
Low Five States				
North Dakota	34.1 ^b	1.35	(47)	-16.8 ^c
Colorado	33.6 ^b	0.57	(48)	-18.0 ^c
New Mexico	29.7 ^b	0.77	(49)	-27.6 ^c
Hawaii	26.2 ^b	0.84	(50)	-36.1 ^c
Utah	16.9 ^b	0.61	(51)	-58.8 ^c

State	Rate	SE	Rank	PD	State	Rate	SE	Rank	PD
Alabama	41.6	0.55	(26)	1.5	Montana	44.6	1.28	(16)	8.8 ^c
Alaska	44.2	2.20	(18)	7.8 ^c	Nebraska	36.2 ^b	0.85	(43)	-11.7 ^c
Arizona	36.9 ^b	0.49	(41)	-10.0 ^c	Nevada	51.9 ^b	0.97	(02)	26.6 ^c
Arkansas	47.1 ^b	0.75	(07)	14.9 ^c	New Hampshire	44.8	1.12	(15)	9.3 ^c
California	36.3 ^b	0.20	(42)	-11.5 ^c	New Jersey	40.4	0.40	(30)	-1.5
Colorado	33.6 ^b	0.57	(48)	-18.0 ^c	New Mexico	29.7 ^b	0.77	(49)	-27.6 ^c
Connecticut	40.2	0.61	(31)	-2.0	New York	37.6 ^b	0.26	(39)	-8.3 ^c
Delaware	48.7 ^b	1.42	(04)	18.8 ^c	North Carolina	41.3	0.42	(28)	0.7
D.C.	36.1	1.47	(44)	-12.0 ^c	North Dakota	34.1 ^b	1.35	(47)	-16.8 ^c
Florida	41.7	0.26	(25)	1.7	Ohio	45.2 ^b	0.36	(14)	10.2 ^c
Georgia	39.8	0.44	(33)	-2.9	Oklahoma	46.1 ^b	0.67	(11)	12.4 ^c
Hawaii	26.2 ^b	0.84	(50)	-36.1 ^c	Oregon	46.7 ^b	0.68	(08)	13.9 ^c
Idaho	34.9 ^b	1.01	(46)	-14.9 ^c	Pennsylvania	40.5	0.31	(29)	-1.2
Illinois	41.9	0.35	(24)	2.2	Rhode Island	42.7	1.14	(22)	4.1
Indiana	47.4 ^b	0.52	(06)	15.6 ^c	South Carolina	40.1	0.58	(32)	-2.2
Iowa	38.4 ^b	0.65	(37)	-6.3 ^c	South Dakota	35.9 ^b	1.26	(45)	-12.4 ^c
Kansas	41.5	0.74	(27)	1.2	Tennessee	46.7 ^b	0.52	(09)	13.9 ^c
Kentucky	55.9 ^b	0.69	(01)	36.3 ^c	Texas	38.5 ^b	0.27	(35)	-6.1 ^c
Louisiana	46.3 ^b	0.62	(10)	12.9 ^c	Utah	16.9 ^b	0.61	(51)	-58.8 ^c
Maine	48.4 ^b	1.07	(05)	18.0 ^c	Vermont	39.2	1.47	(34)	-4.4
Maryland	44.1 ^b	0.54	(19)	7.6 ^c	Virginia	42.5	0.46	(23)	3.7
Massachusetts	44.5 ^b	0.48	(17)	8.5 ^c	Washington	45.2 ^b	0.54	(13)	10.2 ^c
Michigan	44.1 ^b	0.40	(20)	7.6 ^c	West Virginia	50.6 ^b	0.91	(03)	23.4 ^c
Minnesota	37.3 ^b	0.53	(40)	-9.0 ^c	Wisconsin	38.4 ^b	0.50	(36)	-6.3 ^c
Mississippi	43.2	0.73	(21)	5.4 ^c	Wyoming	38.0	1.69	(38)	-7.3 ^c
Missouri	46.0 ^b	0.52	(12)	12.2 ^c					



^a US Mortality Files, National Center for Health Statistics, Centers for Disease Control and Prevention. Rates are per 100,000 and are age-adjusted to the 2000 US Std Population (19 age groups - Census P25-1130).
^b Difference between state rate and total U.S. rate is statistically significant ($p \leq .0002$).
^c Absolute percent difference between state rate and total U.S. rate is 5% or more.
SE Standard error of the rate.
PD Percent difference between state rate and total U.S. rate.

Table XV-22
LUNG AND BRONCHUS CANCER (Invasive)

Estimated United States Cancer Prevalence Counts^a on January 1, 2005
By Race/Ethnicity, Sex and Years Since Diagnosis

Years Since Diagnosis	0 to <5	5 to <10	10 to <15	15 to <20	20 to <25	25 to <30	0 to <15 ^e	0 to <30 ^e	>=30 ^g	Complete ^h
Race/Sex										
All Races ^b	206,013	69,132	37,536	19,609	10,036	5,948	312,681	348,273	11,808	360,081
Males	99,962	31,236	17,208	9,534	4,735	2,986	148,406	165,661	6,765	172,426
Females	106,051	37,896	20,328	10,075	5,301	2,962	164,275	182,612	5,043	187,655
White ^b	177,913	60,655	33,309	17,471	8,821	5,266	271,877	303,433	5,759	309,192
Males	85,424	26,799	15,029	8,320	4,135	2,604	127,252	142,310	2,817	145,127
Females	92,489	33,856	18,280	9,151	4,686	2,662	144,625	161,123	2,942	164,065
Black ^b	20,971	6,356	3,320	1,677	950	517	30,646	33,791	541	34,332
Males	10,688	3,231	1,679	944	473	309	15,598	17,324	302	17,626
Females	10,283	3,125	1,641	733	477	208	15,048	16,467	239	16,706
Asian/Pacific Islander ^c	5,287	1,477	620	+	+	+	7,384	+	+	+
Males	2,887	837	357	+	+	+	4,081	+	+	+
Females	2,400	640	263	+	+	+	3,303	+	+	+
Hispanic ^d	6,338	1,679	940	+	+	+	8,956	+	+	+
Males	3,127	871	429	+	+	+	4,427	+	+	+
Females	3,211	808	511	+	+	+	4,529	+	+	+

Estimated prevalence percent^a on January 1, 2005, of the SEER 11 population diagnosed in the previous 15 years
By Age at Prevalence, Race/Ethnicity and Sex

Age at Prevalence	Age Specific (Crude)										Age-Adjusted ^f
	All Ages	0-9	10-19	20-29	30-39	40-49	50-59	60-69	70-79	80+	All Ages
Race/Sex											
All Races ^c	0.0900%	-	0.0003%	0.0014%	0.0051%	0.0272%	0.1104%	0.3550%	0.6240%	0.4906%	0.0967%
Males	0.0870%	-	0.0003%	0.0012%	0.0045%	0.0241%	0.1122%	0.3748%	0.6954%	0.5974%	0.1054%
Females	0.0930%	-	0.0002%	0.0015%	0.0057%	0.0302%	0.1087%	0.3372%	0.5693%	0.4317%	0.0905%
White ^c	0.0970%	-	0.0003%	0.0015%	0.0054%	0.0266%	0.1078%	0.3688%	0.6505%	0.4981%	0.0992%
Males	0.0907%	-	0.0004%	0.0013%	0.0048%	0.0235%	0.1047%	0.3730%	0.7043%	0.5921%	0.1048%
Females	0.1032%	-	-	0.0018%	0.0060%	0.0298%	0.1107%	0.3649%	0.6084%	0.4468%	0.0957%
Black ^c	0.0762%	-	-	0.0009%	0.0047%	0.0386%	0.1667%	0.4080%	0.6350%	0.4155%	0.1064%
Males	0.0811%	-	-	-	0.0037%	0.0341%	0.1963%	0.5083%	0.7877%	0.5571%	0.1299%
Females	0.0718%	-	-	-	0.0055%	0.0426%	0.1421%	0.3295%	0.5339%	0.3472%	0.0904%
Asian/Pacific Islander ^c	0.0645%	-	-	-	0.0042%	0.0205%	0.0819%	0.2336%	0.4479%	0.4696%	0.0720%
Males	0.0736%	-	-	-	0.0039%	0.0201%	0.0958%	0.2991%	0.5798%	0.6511%	0.0920%
Females	0.0560%	-	-	-	0.0045%	0.0208%	0.0698%	0.1786%	0.3520%	0.3490%	0.0570%
Hispanic ^d	0.0209%	-	-	0.0013%	0.0029%	0.0125%	0.0423%	0.1445%	0.2846%	0.2750%	0.0440%
Males	0.0198%	-	-	0.0008%	0.0032%	0.0114%	0.0439%	0.1504%	0.3331%	0.3663%	0.0504%
Females	0.0221%	-	-	0.0020%	0.0025%	0.0136%	0.0408%	0.1395%	0.2495%	0.2224%	0.0399%

- ^a US 2005 cancer prevalence counts are based on 2005 cancer prevalence proportions from the SEER registries and 1/1/2005 US population estimates based on the average of 2004 and 2005 population estimates from the US Bureau of the Census. Prevalence was calculated using the First Malignant Primary Only for a person.
- ^{b c d} Statistics based on (b) SEER 9 Areas (c) SEER 11 Areas and Rural Georgia (d) NHIA for Hispanic for SEER 11 Areas and Rural Georgia.
- ^e Maximum limited-duration prevalence: 30 years for 1975-2005 SEER 9 data; 15 years for 1990-2005 SEER 11 data (used to calculate prevalence for Hispanics and Asian Pacific Islanders).
- ^f Percentages are age-adjusted to the 2000 US Standard Population (19 age groups - Census P25-1130) by 5-year age groups.
- ^{g h} (g) Cases diagnosed more than 30 years ago were estimated using the completeness index method (Capocaccia et. al. 1997, Merrill et. al. 2000). (h) Complete prevalence is obtained by summing 0 to <30 and >=30.
- Statistic not shown. Statistic based on fewer than 5 cases estimated alive in SEER for the time interval.
- + Not available.

Table XV-23

LUNG AND BRONCHUS CANCER(Invasive)

Percent Distribution and Counts by Histology among Histologically Confirmed Cases, 2001-2005
Both Sexes by Race

Histology ^a	All Races		White		Black		API		AI/AN		Hispanic ^b	
	Count	Percent	Count	Percent	Count	Percent	Count	Percent	Count	Percent	Count	Percent
Carcinoma	197,475	98.9%	166,274	98.9%	19,817	98.9%	10,134	99.2%	674	99.1%	9,986	98.7%
Small cell (8041-8045)	28,313	14.2%	25,040	14.9%	2,175	10.9%	900	8.8%	129	19.0%	1,248	12.3%
Non-small cell ^c	169,162	84.7%	141,234	84.0%	17,642	88.1%	9,234	90.4%	545	80.1%	8,738	86.3%
Squamous and transitional cell (8051-8052,8070-8084, 8120-8131)	40,195	20.1%	33,640	20.0%	4,649	23.2%	1,638	16.0%	156	22.9%	1,812	17.9%
Adenocarcinoma (8050,8140-8149, 8160-8162,8190-8221, 8250-8263,8270-8280, 8290-8337,8350-8390, 8400-8560,8570-8576, 8940-8941)	72,983	36.6%	60,965	36.3%	6,827	34.1%	4,812	47.1%	168	24.7%	3,959	39.1%
Large cell (8011-8015)	7,866	3.9%	6,508	3.9%	961	4.8%	355	3.5%	23	3.4%	410	4.1%
Other non-small cell ^d	48,118	24.1%	40,121	23.9%	5,205	26.0%	2,429	23.8%	198	29.1%	2,557	25.3%
Sarcoma (8680-8713,8800-8921, 8990-8991,9040-9044, 9120-9136,9150-9252, 9370-9373,9540-9582)	334	0.2%	283	0.2%	30	0.1%	-	-	-	-	27	0.3%
Other specified types ^e (8720-8790,8930-8936, 8950-8983,9000-9030, 9060-9110,9260-9365, 9380-9539)	172	0.1%	144	0.1%	21	0.1%	-	-	-	-	-	-
Unspecified (8000-8005)	1,634	0.8%	1,403	0.8%	163	0.8%	59	0.6%	-	-	94	0.9%
Total	199,616	100.0%	168,105	100.0%	20,031	100.0%	10,215	100.0%	680	100.0%	10,121	100.0%

Source: SEER 17 areas (San Francisco, Connecticut, Detroit, Hawaii, Iowa, New Mexico, Seattle, Utah, Atlanta, San Jose-Monterey, Los Angeles, Alaska Native Registry, Rural Georgia, California excluding SF/SJM/LA, Kentucky, Louisiana and New Jersey). Percents may not sum to 100 due to rounding.

- Statistic not shown due to fewer than 16 cases during the time period.

^a Excludes Kaposi Sarcoma, mesothelioma, lymphomas, leukemias, myelomas, lymphoreticular, and immunoproliferative diseases.

^b Hispanic is not mutually exclusive from whites, blacks, Asian/Pacific Islanders, and American Indians/Alaska Natives.

^c Underlying incidence data for Hispanics are based on NHIA and exclude cases from the Alaska Native Registry and Kentucky.

^c Non-small cell includes histologies 8010-8015, 8020-8022, 8030-8040, 8046, 8050-8052, 8070-8084, 8090-8110, 8120-8131, 8140-8156, 8160-8162, 8170-8175, 8180, 8190-8221, 8230-8231, 8240-8263, 8270-8280, 8290-8337, 8340-8347, 8350-8390, 8400-8562, 8570-8576, 8580-8671, 8940-8941.

^d Includes large cell carcinoma, NOS, other specified carcinomas, and unspecified carcinomas (8010, 8020-8022, 8030-8040, 8046, 8090-8110, 8150-8156, 8170-8175, 8180, 8230-8231, 8240-8249, 8340-8347, 8561-8562, 8580-8671).

^e Other specific types includes melanomas.

Table XV-24

LUNG AND BRONCHUS CANCER(Invasive)

Percent Distribution and Counts by Histology among Histologically Confirmed Cases, 2001-2005
Males by Race

Histology ^a	All Races		White		Black		API		AI/AN		Hispanic ^b	
	Count	Percent	Count	Percent	Count	Percent	Count	Percent	Count	Percent	Count	Percent
Carcinoma	107,240	98.9%	88,996	98.9%	11,547	99.0%	6,023	99.2%	355	99.2%	5,649	98.7%
Small cell (8041-8045)	14,292	13.2%	12,468	13.9%	1,129	9.7%	605	10.0%	57	15.9%	697	12.2%
Non-small cell ^c	92,948	85.8%	76,528	85.1%	10,418	89.3%	5,418	89.3%	298	83.2%	4,952	86.5%
Squamous and transitional cell (8051-8052,8070-8084, 8120-8131)	25,834	23.8%	21,341	23.7%	3,108	26.6%	1,211	20.0%	97	27.1%	1,200	21.0%
Adenocarcinoma (8050,8140-8149, 8160-8162,8190-8221, 8250-8263,8270-8280, 8290-8337,8350-8390, 8400-8560,8570-8576, 8940-8941)	36,124	33.3%	29,847	33.2%	3,634	31.2%	2,452	40.4%	82	22.9%	2,016	35.2%
Large cell (8011-8015)	4,497	4.1%	3,675	4.1%	571	4.9%	233	3.8%	-	-	267	4.7%
Other non-small cell ^d	26,493	24.4%	21,665	24.1%	3,105	26.6%	1,522	25.1%	109	30.4%	1,469	25.7%
Sarcoma	199	0.2%	166	0.2%	21	0.2%	-	-	-	-	16	0.3%
(8680-8713,8800-8921, 8990-8991,9040-9044, 9120-9136,9150-9252, 9370-9373,9540-9582)												
Other specified types ^e	91	0.1%	77	0.1%	-	-	-	-	-	-	-	-
(8720-8790,8930-8936, 8950-8983,9000-9030, 9060-9110,9260-9365, 9380-9539)												
Unspecified (8000-8005)	858	0.8%	732	0.8%	88	0.8%	33	0.5%	-	-	52	0.9%
Total	108,389	100.0%	89,972	100.0%	11,665	100.0%	6,069	100.0%	358	100.0%	5,722	100.0%

Source: SEER 17 areas (San Francisco, Connecticut, Detroit, Hawaii, Iowa, New Mexico, Seattle, Utah, Atlanta, San Jose-Monterey, Los Angeles, Alaska Native Registry, Rural Georgia, California excluding SF/SJM/LA, Kentucky, Louisiana and New Jersey). Percents may not sum to 100 due to rounding.

- Statistic not shown due to fewer than 16 cases during the time period.

^a Excludes Kaposi Sarcoma, mesothelioma, lymphomas, leukemias, myelomas, lymphoreticular, and immunoproliferative diseases.

^b Hispanic is not mutually exclusive from whites, blacks, Asian/Pacific Islanders, and American Indians/Alaska Natives.

^c Underlying incidence data for Hispanics are based on NHIA and exclude cases from the Alaska Native Registry and Kentucky.

^c Non-small cell includes histologies 8010-8015, 8020-8022, 8030-8040, 8046, 8050-8052, 8070-8084, 8090-8110, 8120-8131, 8140-8156, 8160-8162, 8170-8175, 8180, 8190-8221, 8230-8231, 8240-8263, 8270-8280, 8290-8337, 8340-8347, 8350-8390, 8400-8562, 8570-8576, 8580-8671, 8940-8941.

^d Includes large cell carcinoma, NOS, other specified carcinomas, and unspecified carcinomas (8010, 8020-8022, 8030-8040, 8046, 8090-8110, 8150-8156, 8170-8175, 8180, 8230-8231, 8240-8249, 8340-8347, 8561-8562, 8580-8671).

^e Other specific types includes melanomas.

Table XV-25

LUNG AND BRONCHUS CANCER(Invasive)

Percent Distribution and Counts by Histology among Histologically Confirmed Cases, 2001-2005
Females by Race

Histology ^a	All Races		White		Black		API		AI/AN		Hispanic ^b	
	Count	Percent	Count	Percent	Count	Percent	Count	Percent	Count	Percent	Count	Percent
Carcinoma	90,235	98.9%	77,278	98.9%	8,270	98.9%	4,111	99.2%	319	99.1%	4,337	98.6%
Small cell (8041-8045)	14,021	15.4%	12,572	16.1%	1,046	12.5%	295	7.1%	72	22.4%	551	12.5%
Non-small cell ^c	76,214	83.5%	64,706	82.8%	7,224	86.3%	3,816	92.0%	247	76.7%	3,786	86.1%
Squamous and transitional cell (8051-8052,8070-8084, 8120-8131)	14,361	15.7%	12,299	15.7%	1,541	18.4%	427	10.3%	59	18.3%	612	13.9%
Adenocarcinoma (8050,8140-8149, 8160-8162,8190-8221, 8250-8263,8270-8280, 8290-8337,8350-8390, 8400-8560,8570-8576, 8940-8941)	36,859	40.4%	31,118	39.8%	3,193	38.2%	2,360	56.9%	86	26.7%	1,943	44.2%
Large cell (8011-8015)	3,369	3.7%	2,833	3.6%	390	4.7%	122	2.9%	-	-	143	3.3%
Other non-small cell ^d	21,625	23.7%	18,456	23.6%	2,100	25.1%	907	21.9%	89	27.6%	1,088	24.7%
Sarcoma (8680-8713,8800-8921, 8990-8991,9040-9044, 9120-9136,9150-9252, 9370-9373,9540-9582)	135	0.1%	117	0.1%	-	-	-	-	-	-	-	-
Other specified types ^e (8720-8790,8930-8936, 8950-8983,9000-9030, 9060-9110,9260-9365, 9380-9539)	81	0.1%	67	0.1%	-	-	-	-	-	-	-	-
Unspecified (8000-8005)	776	0.9%	671	0.9%	75	0.9%	26	0.6%	-	-	42	1.0%
Total	91,227	100.0%	78,133	100.0%	8,366	100.0%	4,146	100.0%	322	100.0%	4,399	100.0%

Source: SEER 17 areas (San Francisco, Connecticut, Detroit, Hawaii, Iowa, New Mexico, Seattle, Utah, Atlanta, San Jose-Monterey, Los Angeles, Alaska Native Registry, Rural Georgia, California excluding SF/SJM/LA, Kentucky, Louisiana and New Jersey). Percents may not sum to 100 due to rounding.

- Statistic not shown due to fewer than 16 cases during the time period.

^a Excludes Kaposi Sarcoma, mesothelioma, lymphomas, leukemias, myelomas, lymphoreticular, and immunoproliferative diseases.

^b Hispanic is not mutually exclusive from whites, blacks, Asian/Pacific Islanders, and American Indians/Alaska Natives.

^c Underlying incidence data for Hispanics are based on NHIA and exclude cases from the Alaska Native Registry and Kentucky.

^c Non-small cell includes histologies 8010-8015, 8020-8022, 8030-8040, 8046, 8050-8052, 8070-8084, 8090-8110, 8120-8131, 8140-8156, 8160-8162, 8170-8175, 8180, 8190-8221, 8230-8231, 8240-8263, 8270-8280, 8290-8337, 8340-8347, 8350-8390, 8400-8562, 8570-8576, 8580-8671, 8940-8941.

^d Includes large cell carcinoma, NOS, other specified carcinomas, and unspecified carcinomas (8010, 8020-8022, 8030-8040, 8046, 8090-8110, 8150-8156, 8170-8175, 8180, 8230-8231, 8240-8249, 8340-8347, 8561-8562, 8580-8671).

^e Other specific types includes melanomas.

SEER Incidence, Delay Adjusted Incidence and US Death Rates^a Lung and Bronchus Cancer, by Race and Sex

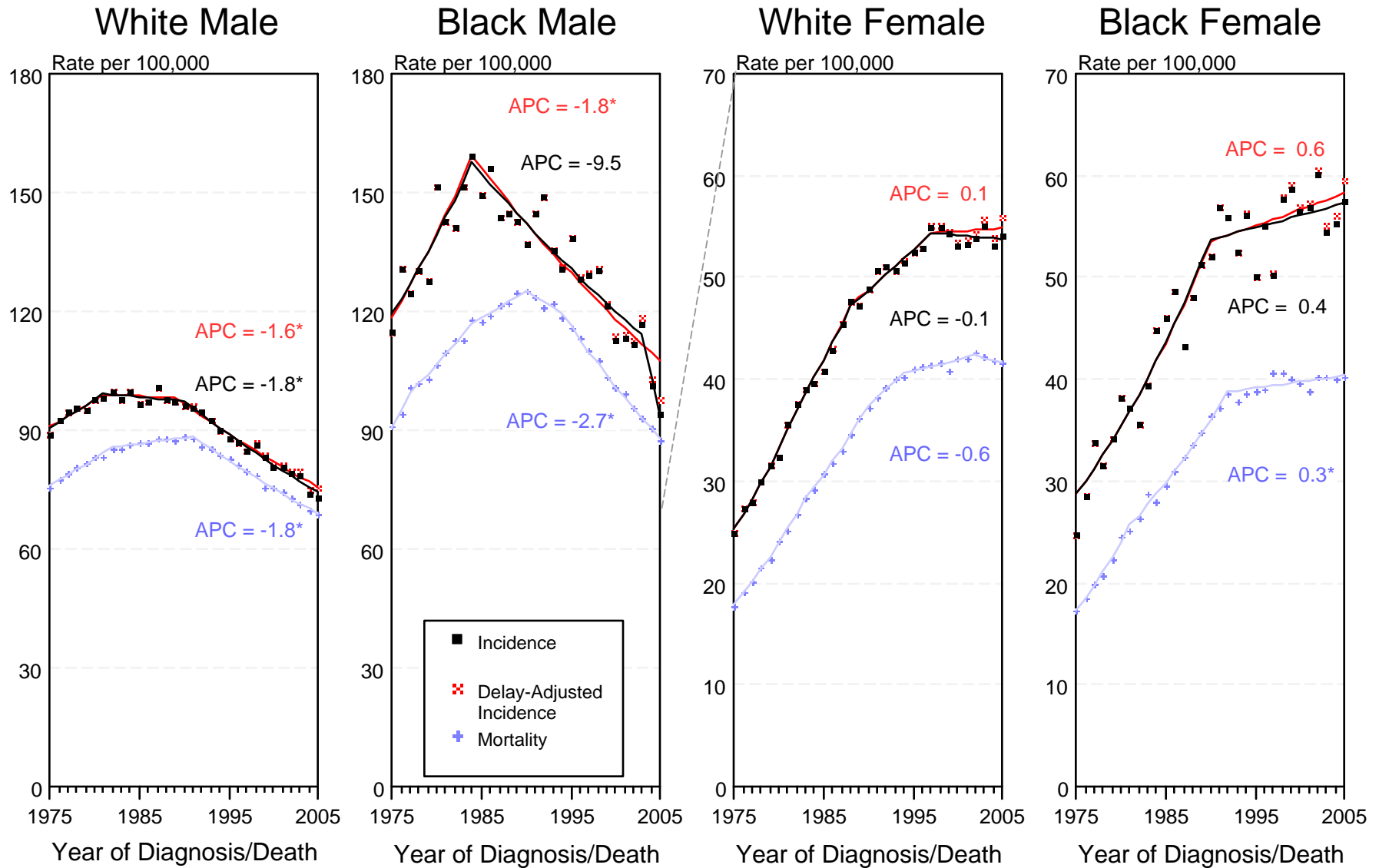


Figure XV-1

^a Source: SEER 9 areas and US Mortality Files (National Center for Health Statistics, CDC). Rates are age-adjusted to the 2000 US Std Population (19 age groups - Census P25-1103). Regression lines and APCs are calculated using the Joinpoint Regression Program Version 3.3.1, April 2008, National Cancer Institute. The APC is the Annual Percent Change for the regression line segments. The APC shown on the graph is for the most recent trend.
* The APC is significantly different from zero ($p < 0.05$).

SEER Incidence, Delay Adjusted Incidence and US Death Rates^a Lung and Bronchus Cancer, Under 65 Years of Age, by Race and Sex

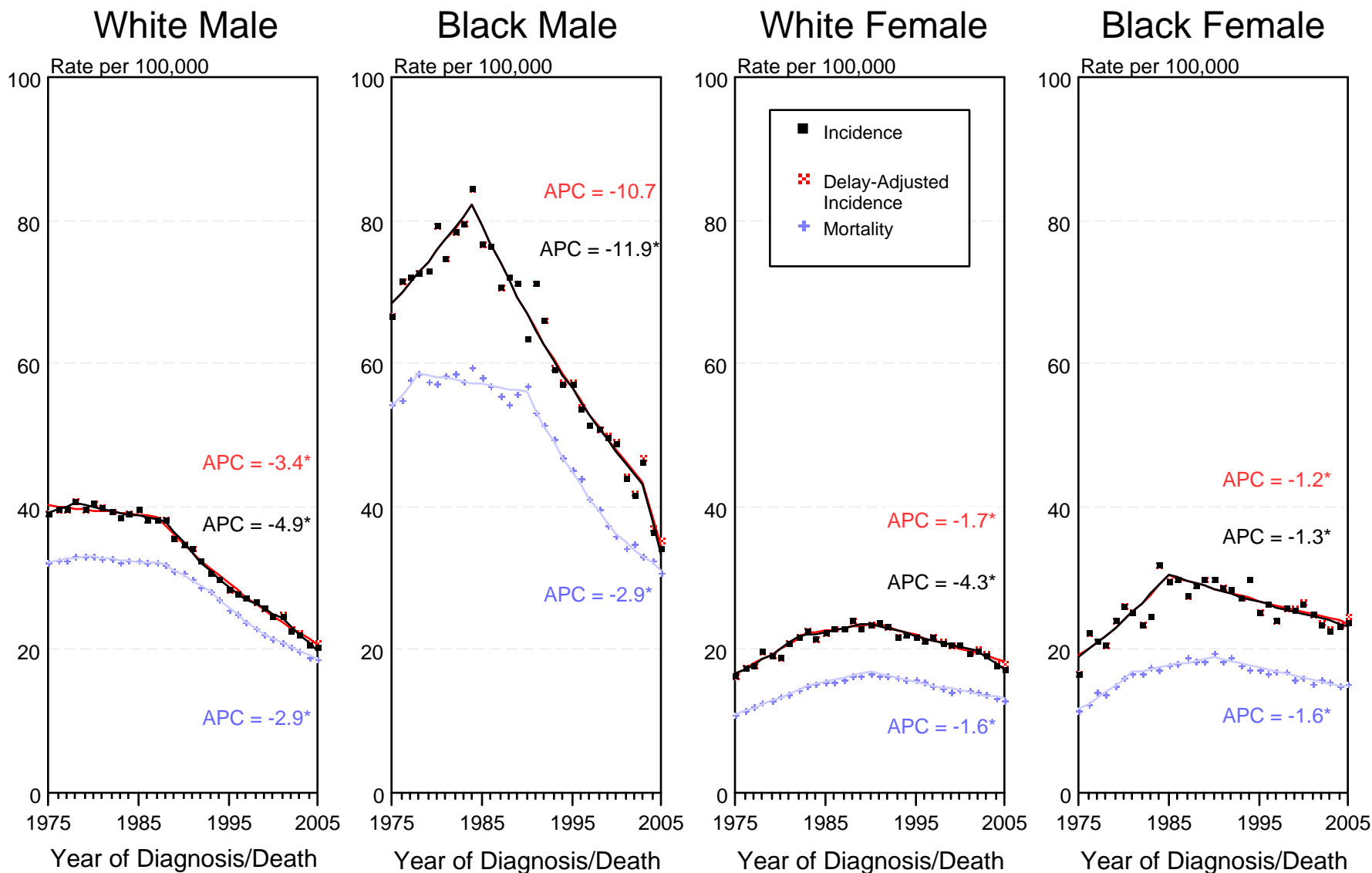


Figure XV-2

^a Source: SEER 9 areas and US Mortality Files (National Center for Health Statistics, CDC). Rates are age-adjusted to the 2000 US Std Population (19 age groups - Census P25-1103). Regression lines and APCs are calculated using the Joinpoint Regression Program Version 3.3.1, April 2008, National Cancer Institute. The APC is the Annual Percent Change for the regression line segments. The APC shown on the graph is for the most recent trend.
* The APC is significantly different from zero ($p < 0.05$).

SEER Incidence, Delay Adjusted Incidence and US Death Rates^a Lung and Bronchus Cancer, Ages 65 and Over, by Race and Sex

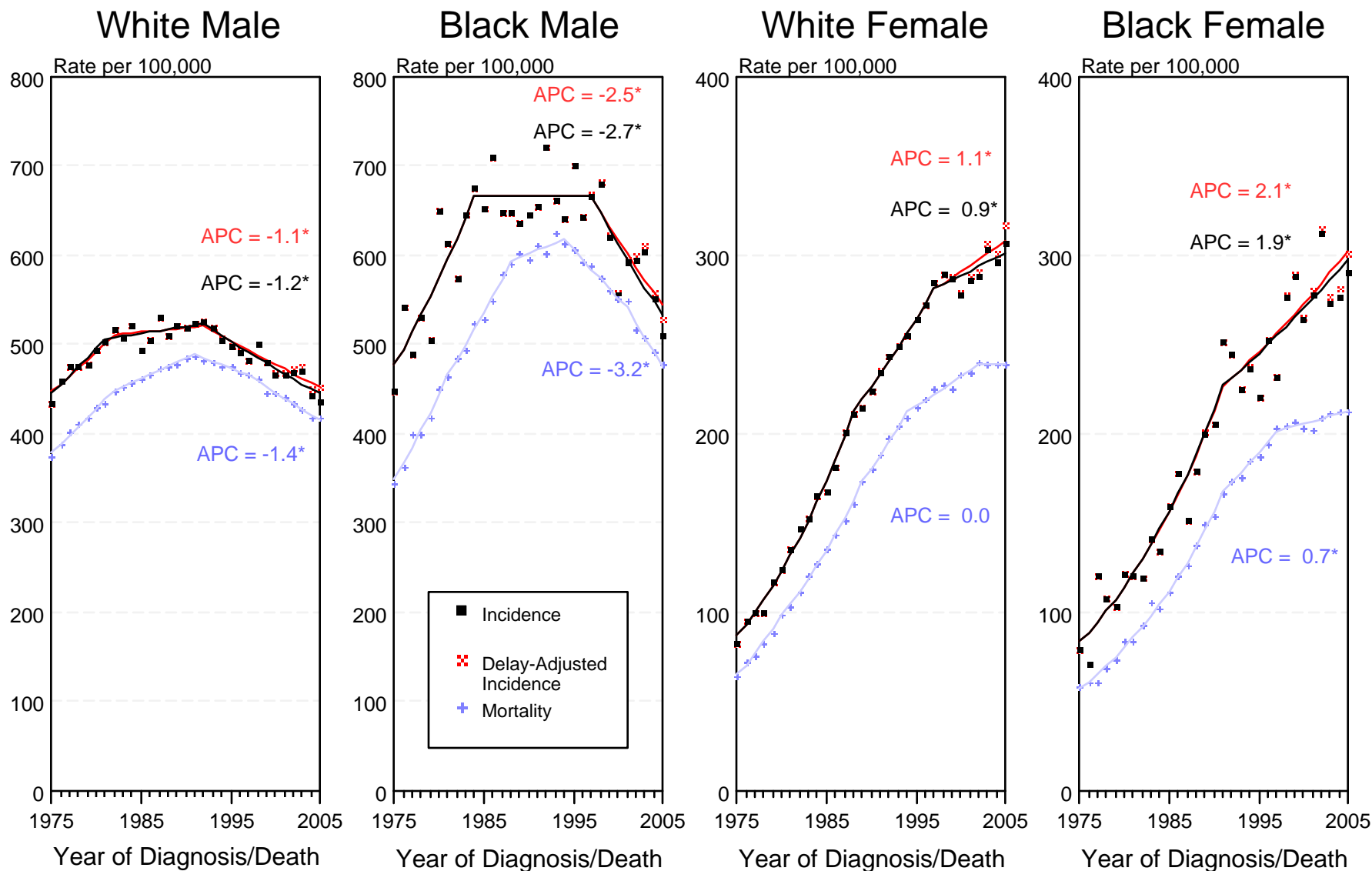


Figure XV-3

^a Source: SEER 9 areas and US Mortality Files (National Center for Health Statistics, CDC). Rates are age-adjusted to the 2000 US Std Population (19 age groups - Census P25-1103). Regression lines and APCs are calculated using the Joinpoint Regression Program Version 3.3.1, April 2008, National Cancer Institute. The APC is the Annual Percent Change for the regression line segments. The APC shown on the graph is for the most recent trend.
* The APC is significantly different from zero ($p < 0.05$).

SEER Incidence and US Death Rates^a Lung and Bronchus Cancer, Both Sexes

Joinpoint Analyses for Whites and Blacks from 1975-2005 and for Asian/Pacific Islanders, American Indians/Alaska Natives and Hispanics from 1992-2005

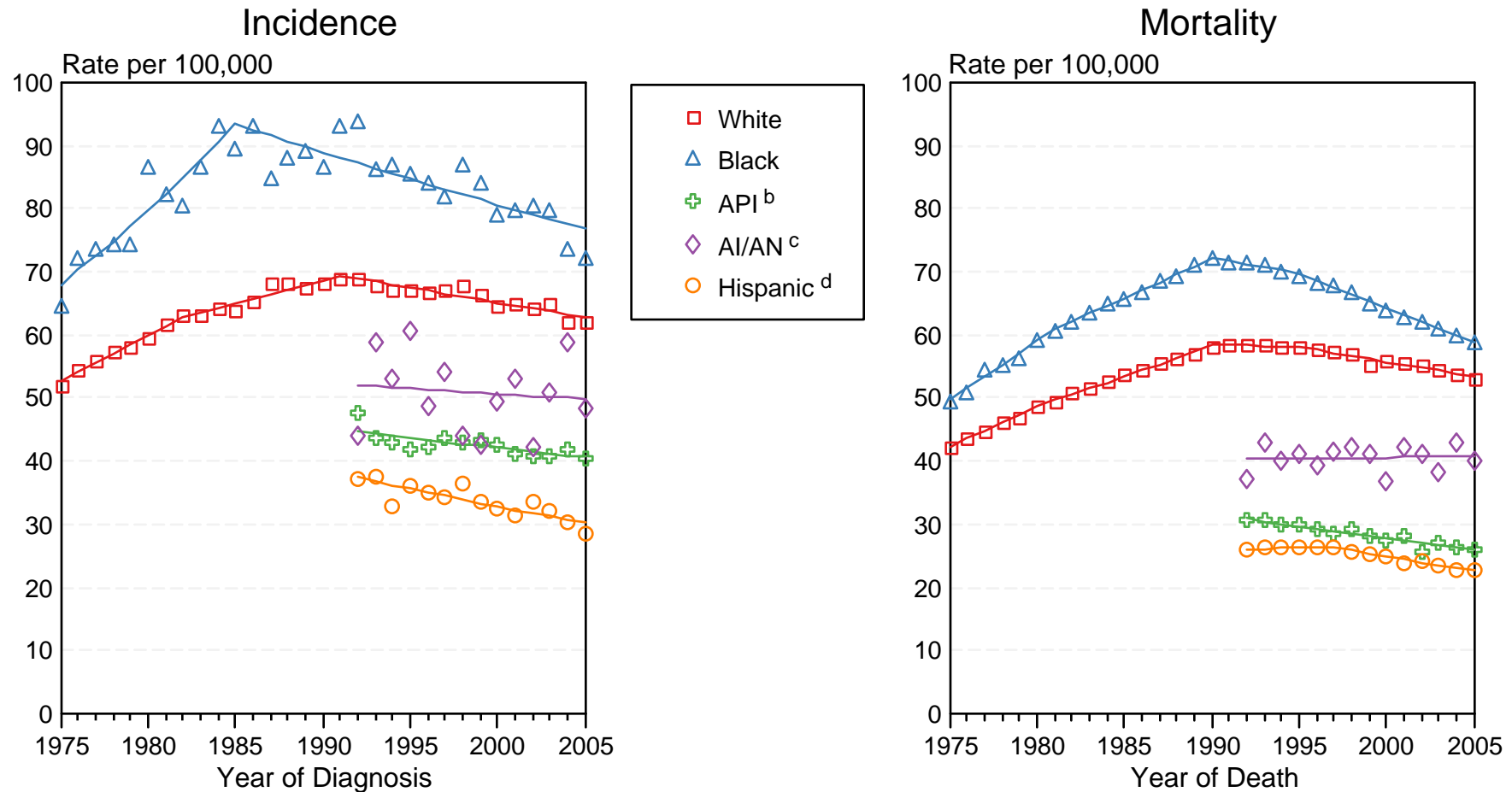


Figure XV-4

Source: Incidence data for whites and blacks are from the SEER 9 areas (San Francisco, Connecticut, Detroit, Hawaii, Iowa, New Mexico, Seattle, Utah, Atlanta).

Incidence data for Asian/Pacific Islanders, American Indians/Alaska Natives and Hispanics are from the SEER 13 Areas (SEER 9 Areas, San Jose-Monterey, Los Angeles, Alaska Native Registry and Rural Georgia). Mortality data are from US Mortality Files, National Center for Health Statistics, CDC.

^a Rates are age-adjusted to the 2000 US Std Population (19 age groups - Census P25-1103).

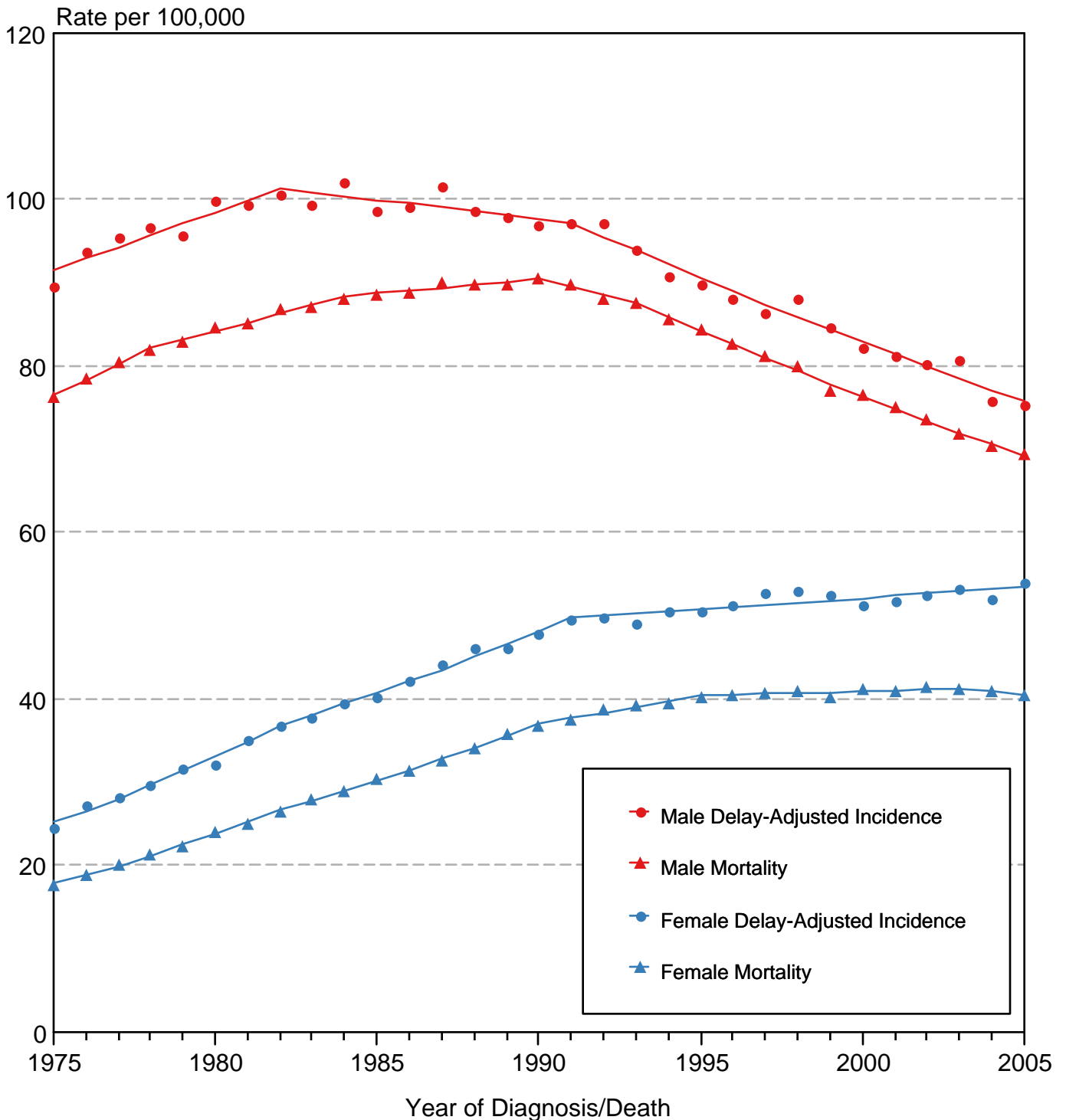
Regression lines are calculated using the Joinpoint Regression Program Version 3.3.1, April 2008, National Cancer Institute. Joinpoint analyses for Whites and Blacks during the 1975-2005 period allow a maximum of 4 joinpoints. Analyses for other ethnic groups during the period 1992-2005 allow a maximum of 3 joinpoints.

^b API = Asian/Pacific Islander.

^c AI/AN = American Indian/Alaska Native. Rates for American Indian/Alaska Native are based on the CHSDA(Contract Health Service Delivery Area) counties.

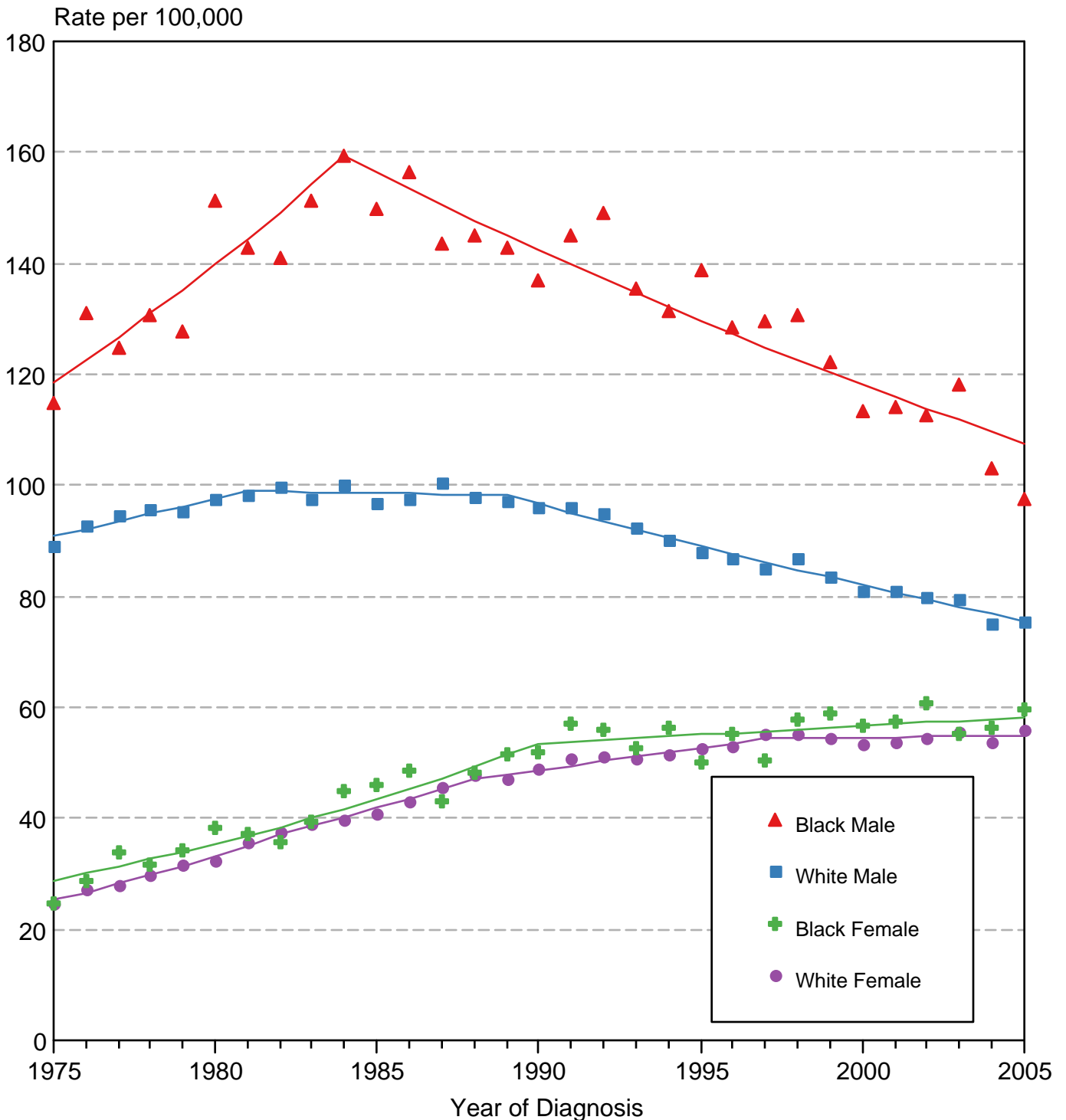
^d Hispanic is not mutually exclusive from whites, blacks, Asian/Pacific Islanders, and American Indians/Alaska Natives. Incidence data for Hispanics are based on NHIA and exclude cases from the Alaska Native Registry. Mortality data for Hispanics exclude cases from Connecticut, Maine, Maryland, Minnesota, New Hampshire, New York, North Dakota, Oklahoma, and Vermont.

Cancer of the Lung & Bronchus SEER Delay-Adjusted Incidence & US Death Rates, 1975-2005, All Races, By Sex



Source: SEER 9 areas and US Mortality Files (National Center for Health Statistics, CDC).
Rates are age-adjusted to the 2000 US Std Population (19 age groups - Census P25-1103).
Regression lines are calculated using the Joinpoint Regression Program Version 3.3.1, April 2008, National Cancer Institute.

Cancer of the Lung & Bronchus SEER Delay-Adjusted Incidence, 1975-2005 By Sex and Race



Source: SEER 9 areas. Rates are age-adjusted to the 2000 US Std Population (19 age groups - Census P25-1103). Regression lines are calculated using the Joinpoint Regression Program Version 3.3.1, April 2008, National Cancer Institute.