

Table V-1
CERVIX UTERI CANCER (Invasive)

TRENDS IN SEER INCIDENCE^a AND U.S. MORTALITY^b USING THE JOINPOINT REGRESSION PROGRAM, 1975-2005
 WITH UP TO THREE JOINPOINTS BY RACE AND AGE

		Joinpoint Trend 1		Joinpoint Trend 2		Joinpoint Trend 3		Joinpoint Trend 4		AAPC ^c	
		Years	APC	Years	APC	Years	APC	Years	APC	1996-2005	2001-2005
<u>SEER Cancer Incidence^a</u>											
All Races	All Ages	1975-1981	-4.6*	1981-1996	-1.1*	1996-2005	-3.8*			-3.8*	-3.8*
All Races	Under 50	1975-1981	-3.7*	1981-1996	-0.4	1996-2005	-3.6*			-3.6*	-3.6*
All Races	50 and Over	1975-1983	-4.9*	1983-1991	-0.8	1991-2005	-3.4*			-3.4*	-3.4*
White	All Ages	1975-1982	-4.8*	1982-1990	0.5	1990-2005	-2.6*			-2.6*	-2.6*
White	Under 50	1975-1981	-4.6*	1981-1990	1.4	1990-2005	-2.2*			-2.2*	-2.2*
White	50 and Over	1975-1985	-4.6*	1985-1991	0.2	1991-2005	-3.5*			-3.5*	-3.5*
Black	All Ages	1975-2005	-3.8*							-3.8*	-3.8*
Black	Under 50	1975-2005	-3.4*							-3.4*	-3.4*
Black	50 and Over	1975-2005	-4.0*							-4.0*	-4.0*
<u>SEER Delay-Adjusted Incidence^a</u>											
All Races	All Ages	1975-1981	-4.6*	1981-1996	-1.1*	1996-2005	-3.6*			-3.6*	-3.6*
All Races	Under 50	1975-1981	-3.7*	1981-1996	-0.4	1996-2005	-3.4*			-3.4*	-3.4*
All Races	50 and Over	1975-1983	-4.9*	1983-1991	-0.8	1991-2005	-3.3*			-3.3*	-3.3*
White	All Ages	1975-1982	-4.8*	1982-1990	0.4	1990-2005	-2.5*			-2.5*	-2.5*
White	Under 50	1975-1982	-4.0*	1982-1989	2.1	1989-2005	-1.9*			-1.9*	-1.9*
White	50 and Over	1975-1985	-4.6*	1985-1991	0.2	1991-2005	-3.3*			-3.3*	-3.3*
Black	All Ages	1975-2005	-3.7*							-3.7*	-3.7*
Black	Under 50	1975-2005	-3.3*							-3.3*	-3.3*
Black	50 and Over	1975-2005	-4.0*							-4.0*	-4.0*
<u>U.S. Cancer Mortality^b</u>											
All Races	All Ages	1975-1982	-4.4*	1982-1995	-1.6*	1995-2005	-3.4*			-3.4*	-3.4*
All Races	Under 50	1975-1982	-3.5*	1982-1994	-0.4	1994-2005	-3.1*			-3.1*	-3.1*
All Races	50 and Over	1975-1984	-4.3*	1984-1994	-1.8*	1994-2005	-3.4*			-3.4*	-3.4*
White	All Ages	1975-1983	-4.2*	1983-1996	-1.3*	1996-2005	-3.2*			-3.2*	-3.2*
White	Under 50	1975-1980	-4.1*	1980-1996	-0.3	1996-2005	-3.0*			-3.0*	-3.0*
White	50 and Over	1975-1984	-4.7*	1984-1994	-1.7*	1994-2005	-3.1*			-3.1*	-3.1*
Black	All Ages	1975-1981	-4.8*	1981-1992	-2.3*	1992-2005	-4.5*			-4.5*	-4.5*
Black	Under 50	1975-2005	-3.3*							-3.3*	-3.3*
Black	50 and Over	1975-1993	-3.0*	1993-2005	-4.4*					-4.4*	-4.4*

Joinpoint Regression Program Version 3.3.1, April 2008, National Cancer Institute. (<http://srab.cancer.gov/joinpoint/>).
 The APC is the Annual Percent Change based on rates age-adjusted to the 2000 US Std Population (19 age groups - Census P25-1130).
 Trends are from the SEER 9 areas (San Francisco, Connecticut, Detroit, Hawaii, Iowa, New Mexico, Seattle, Utah, and Atlanta).
 Trends are from US Mortality Files, National Center for Health Statistics, Centers for Disease Control and Prevention.
 The AAPC is the Average Annual Percent Change and is based on the APCs calculated by Joinpoint over the time range of 1975-2005.
 The APC/AAPC is significantly different from zero ($p < .05$).

a
b
c
*

Table V-1a
CERVIX UTERI CANCER (Invasive)

TRENDS IN SEER INCIDENCE^a AND U.S. MORTALITY^b USING THE JOINPOINT REGRESSION PROGRAM, 1975-2005
 WITH UP TO FOUR JOINPOINTS BY RACE AND AGE

		<u>Joinpoint Trend 1</u>		<u>Joinpoint Trend 2</u>		<u>Joinpoint Trend 3</u>		<u>Joinpoint Trend 4</u>		<u>Joinpoint Trend 5</u>		<u>AAPC^c</u>
		Years	APC	Years	APC	Years	APC	Years	APC	Years	APC	2001-2005
<u>SEER Cancer Incidence^a</u>												
All Races	All Ages	1975-1981	-4.6*	1981-1996	-1.1*	1996-2005	-3.8*					-3.8*
All Races	Under 50	1975-1981	-3.7*	1981-1996	-0.4	1996-2005	-3.6*					-3.6*
All Races	50 and Over	1975-1983	-4.9*	1983-1991	-0.8	1991-2005	-3.4*					-3.4*
White	All Ages	1975-1982	-4.8*	1982-1990	0.5	1990-2005	-2.6*					-2.6*
White	Under 50	1975-1981	-4.6*	1981-1990	1.4	1990-2005	-2.2*					-2.2*
White	50 and Over	1975-1985	-4.6*	1985-1991	0.2	1991-2005	-3.5*					-3.5*
Black	All Ages	1975-2005	-3.8*									-3.8*
Black	Under 50	1975-2005	-3.4*									-3.4*
Black	50 and Over	1975-2005	-4.0*									-4.0*
<u>SEER Delay-Adjusted Incidence^a</u>												
All Races	All Ages	1975-1981	-4.6*	1981-1996	-1.1*	1996-2005	-3.6*					-3.6*
All Races	Under 50	1975-1981	-3.7*	1981-1996	-0.4	1996-2005	-3.4*					-3.4*
All Races	50 and Over	1975-1983	-4.9*	1983-1991	-0.8	1991-2005	-3.3*					-3.3*
White	All Ages	1975-1982	-4.8*	1982-1990	0.4	1990-2005	-2.5*					-2.5*
White	Under 50	1975-1982	-4.0*	1982-1989	2.1	1989-2005	-1.9*					-1.9*
White	50 and Over	1975-1985	-4.6*	1985-1991	0.2	1991-2005	-3.3*					-3.3*
Black	All Ages	1975-2005	-3.7*									-3.7*
Black	Under 50	1975-2005	-3.3*									-3.3*
Black	50 and Over	1975-2005	-4.0*									-4.0*
<u>U.S. Cancer Mortality^b</u>												
All Races	All Ages	1975-1982	-4.4*	1982-1995	-1.6*	1995-2005	-3.4*					-3.4*
All Races	Under 50	1975-1982	-3.5*	1982-1994	-0.4	1994-2005	-3.1*					-3.1*
All Races	50 and Over	1975-1984	-4.3*	1984-1994	-1.8*	1994-2005	-3.4*					-3.4*
White	All Ages	1975-1983	-4.2*	1983-1996	-1.3*	1996-2005	-3.2*					-3.2*
White	Under 50	1975-1980	-4.1*	1980-1996	-0.3	1996-2005	-3.0*					-3.0*
White	50 and Over	1975-1984	-4.7*	1984-1994	-1.7*	1994-2005	-3.1*					-3.1*
Black	All Ages	1975-1981	-4.8*	1981-1992	-2.3*	1992-2005	-4.5*					-4.5*
Black	Under 50	1975-2005	-3.3*									-3.3*
Black	50 and Over	1975-1993	-3.0*	1993-2005	-4.4*							-4.4*

Joinpoint Regression Program Version 3.3.1, April 2008, National Cancer Institute. (<http://srab.cancer.gov/joinpoint/>).

The APC is the Annual Percent Change based on rates age-adjusted to the 2000 US Std Population (19 age groups - Census P25-1130).

^a Trends are from the SEER 9 areas (San Francisco, Connecticut, Detroit, Hawaii, Iowa, New Mexico, Seattle, Utah, and Atlanta).

^b Trends are from US Mortality Files, National Center for Health Statistics, Centers for Disease Control and Prevention.

^c The AAPC is the Average Annual Percent Change and is based on the APCs calculated by Joinpoint over the time range of 1975-2005.

* The APC/AAPC is significantly different from zero ($p < .05$).

Table V-2
CERVIX UTERI CANCER (Invasive)

AGE-ADJUSTED SEER INCIDENCE^a RATES BY YEAR, RACE AND AGE

	<u>All Races, Females</u>			<u>White Females</u>			<u>Black Females</u>		
	<u>All</u>	<u><50</u>	<u>50+</u>	<u>All</u>	<u><50</u>	<u>50+</u>	<u>All</u>	<u><50</u>	<u>50+</u>
<u>SEER INCIDENCE RATES</u>									
<u>YEAR OF DIAGNOSIS:</u>									
1975	14.8	9.7	28.2	13.3	8.9	24.8	33.1	17.6	73.7
1976	14.2	9.5	26.7	12.9	8.8	23.7	29.3	15.8	64.4
1977	13.0	8.4	25.0	11.7	7.6	22.5	28.3	15.9	60.8
1978	12.5	8.3	23.6	11.4	7.8	20.9	24.1	12.4	55.0
1979	12.7	8.7	23.4	11.0	7.6	19.9	28.8	16.0	62.4
1980	12.2	8.1	23.0	11.0	7.3	20.6	23.5	13.6	49.4
1981	10.8	7.4	19.7	9.6	6.6	17.3	24.0	13.6	51.2
1982	10.6	7.1	19.8	9.4	6.7	16.5	21.8	10.2	52.4
1983	10.5	7.3	18.8	9.6	6.8	17.0	18.8	11.9	37.0
1984	11.0	8.0	19.0	10.0	7.4	16.8	21.1	12.6	43.3
1985	10.2	7.1	18.5	9.1	6.7	15.4	19.0	9.5	43.8
1986	10.8	7.9	18.6	9.7	7.3	16.0	18.4	10.7	38.5
1987	10.0	7.1	17.6	9.0	6.9	14.6	18.7	8.7	45.0
1988	10.6	7.9	17.7	9.5	7.4	15.0	19.0	10.4	41.3
1989	10.7	7.9	18.0	10.1	7.9	15.7	15.7	8.0	35.9
1990	10.6	8.0	17.5	9.9	7.7	15.7	16.7	9.6	35.2
1991	10.0	7.0	17.9	9.2	6.8	15.6	16.3	9.2	35.0
1992	9.9	7.5	16.4	9.4	7.2	15.2	14.1	9.9	25.0
1993	9.6	7.1	16.4	9.2	7.0	14.8	13.7	8.9	26.5
1994	9.5	6.9	16.2	8.7	6.8	13.7	14.1	7.0	32.6
1995	8.9	6.8	14.3	7.9	6.5	11.7	13.5	7.8	28.5
1996	9.6	7.4	15.5	8.7	7.1	13.0	14.3	8.1	30.6
1997	9.2	7.1	14.7	8.4	6.9	12.3	13.6	8.1	28.1
1998	9.1	7.1	14.4	8.4	6.8	12.6	13.1	9.0	23.9
1999	8.2	6.5	12.8	7.8	6.5	11.0	13.4	8.0	27.3
2000	7.7	5.8	12.6	7.4	5.9	11.4	10.2	6.4	20.2
2001	7.9	5.8	13.3	7.4	5.8	11.6	11.1	4.9	27.2
2002	7.4	5.6	11.9	7.0	5.6	10.4	10.3	6.5	20.3
2003	7.2	5.7	11.3	6.8	5.6	9.9	10.6	6.1	22.5
2004	7.1	5.4	11.3	6.8	5.6	9.9	10.4	6.4	21.0
2005	6.7	5.3	10.2	6.4	5.4	9.2	8.5	5.0	17.5
1975-2005	9.8	7.1	17.0	9.1	6.8	14.9	16.1	9.0	34.7

^a SEER 9 areas (San Francisco, Connecticut, Detroit, Hawaii, Iowa, New Mexico, Seattle, Utah, and Atlanta). Rates are per 100,000 and are age-adjusted to the 2000 US Std Population (19 age groups - Census P25-1130).

- Statistic not shown. Rate based on less than 16 cases for the time interval.

Table V-3
CERVIX UTERI CANCER (Invasive)

AGE-ADJUSTED U.S. DEATH^a RATES BY YEAR, RACE AND AGE

	<u>All Races, Females</u>			<u>White Females</u>			<u>Black Females</u>		
	<u>All</u>	<u><50</u>	<u>50+</u>	<u>All</u>	<u><50</u>	<u>50+</u>	<u>All</u>	<u><50</u>	<u>50+</u>
<u>U.S. DEATH RATES</u>									
<u>YEAR OF DEATH:</u>									
1975	5.6	2.4	13.9	4.7	1.9	12.1	13.3	5.7	33.3
1976	5.4	2.2	13.9	4.7	1.9	12.1	12.9	4.9	33.7
1977	5.0	2.0	12.7	4.2	1.6	11.0	12.2	5.0	31.1
1978	4.8	2.1	12.0	4.2	1.8	10.4	11.6	4.8	29.6
1979	4.6	1.9	11.6	3.9	1.6	10.2	10.6	4.5	26.7
1980	4.5	2.0	11.0	3.8	1.6	9.5	10.8	4.6	26.9
1981	4.3	1.8	10.9	3.7	1.6	9.4	9.9	3.7	26.0
1982	4.1	1.8	10.2	3.5	1.5	8.7	9.8	3.6	25.9
1983	4.0	1.8	9.9	3.4	1.5	8.4	9.8	3.9	25.2
1984	3.9	1.8	9.5	3.4	1.5	8.1	9.3	3.9	23.3
1985	3.8	1.7	9.4	3.3	1.5	7.9	9.0	3.4	23.7
1986	3.8	1.8	9.2	3.2	1.5	7.8	9.2	4.0	22.9
1987	3.6	1.7	8.6	3.1	1.5	7.4	8.2	3.6	20.3
1988	3.6	1.7	8.6	3.1	1.5	7.2	8.2	3.0	21.7
1989	3.6	1.7	8.5	3.0	1.5	7.1	8.6	3.3	22.6
1990	3.7	1.8	8.6	3.2	1.6	7.4	7.8	3.4	19.2
1991	3.5	1.7	8.2	3.0	1.5	7.0	7.6	3.2	19.4
1992	3.5	1.7	8.2	3.0	1.5	6.9	8.1	3.4	20.4
1993	3.4	1.7	8.0	2.9	1.5	6.8	7.7	3.1	19.6
1994	3.4	1.7	7.9	3.0	1.5	6.9	6.7	2.8	16.8
1995	3.2	1.6	7.5	2.8	1.5	6.4	7.0	3.0	17.5
1996	3.2	1.6	7.5	2.9	1.5	6.5	6.2	2.5	15.8
1997	3.1	1.6	7.2	2.8	1.4	6.2	6.5	2.8	16.0
1998	3.0	1.6	6.7	2.6	1.5	5.8	5.9	2.5	14.7
1999	2.8	1.4	6.7	2.6	1.3	5.8	5.4	1.9	14.6
2000	2.8	1.4	6.5	2.5	1.2	5.7	5.4	2.2	14.0
2001	2.7	1.4	6.1	2.4	1.3	5.4	4.8	1.9	12.4
2002	2.5	1.3	5.9	2.3	1.2	5.1	5.0	2.1	12.6
2003	2.5	1.2	5.7	2.2	1.2	5.1	4.7	1.9	11.8
2004	2.4	1.3	5.5	2.2	1.2	4.8	4.5	1.9	11.3
2005	2.4	1.2	5.5	2.2	1.2	4.9	4.4	2.0	10.7
1975-2005	3.5	1.6	8.5	3.1	1.5	7.3	7.6	3.0	19.5

^a US Mortality Files, National Center for Health Statistics, Centers for Disease Control and Prevention. Rates are per 100,000 and are age-adjusted to the 2000 US Std Population (19 age groups - Census P25-1130).

- Statistic not shown. Rate based on less than 16 cases for the time interval.

Table V-4
CERVIX UTERI CANCER (Invasive)

SEER INCIDENCE^a AND U.S. DEATH^b RATES, AGE-ADJUSTED AND AGE-SPECIFIC RATES, BY RACE

	Incidence ^a			US Death ^b		
	All Races, Females	White Females	Black Females	All Races, Females	White Females	Black Females
<u>AGE-ADJUSTED RATES, 2001-2005</u>						
AGE AT DIAGNOSIS/DEATH:						
All ages	8.4	8.2	10.8	2.5	2.3	4.7
Under 65	7.8	7.7	8.8	1.9	1.8	3.1
65 and over	13.0	11.4	24.6	6.6	5.6	15.4
All ages(IARC world std) ^c	6.6	6.5	8.2	1.8	1.7	3.3
<u>AGE-SPECIFIC RATES, 2001-2005</u>						
AGE AT DIAGNOSIS/DEATH:						
<1	-	-	-	-	-	-
1-4	-	-	-	-	-	-
5-9	-	-	-	-	-	-
10-14	-	-	-	-	-	-
15-19	-	-	-	-	-	-
20-24	1.5	1.5	1.8	0.1	0.1	-
25-29	5.8	6.2	5.7	0.6	0.5	1.0
30-34	11.3	12.2	9.7	1.4	1.4	1.9
35-39	13.3	14.2	11.9	2.4	2.3	3.4
40-44	15.3	15.3	16.0	3.4	3.2	5.3
45-49	14.6	13.8	18.3	4.2	3.9	6.8
50-54	13.9	13.5	17.6	4.6	4.2	7.4
55-59	14.1	13.4	18.3	5.2	4.8	8.7
60-64	14.3	12.6	24.2	5.5	4.9	10.5
65-69	15.1	13.7	23.9	5.8	5.0	12.8
70-74	13.1	11.9	22.2	6.0	5.1	13.2
75-79	12.5	10.5	25.2	6.3	5.4	15.2
80-84	11.4	9.8	27.4	7.7	6.7	18.7
85+	10.7	9.0	26.5	8.5	7.2	22.2

^a SEER 17 areas. Rates are per 100,000 and are age-adjusted to the 2000 US Std Population (19 age groups - Census P25-1130), unless noted.

^b US Mortality Files, National Center for Health Statistics, Centers for Disease Control and Prevention. Rates are per 100,000 and are age-adjusted to the 2000 US Std Population (19 age groups - Census P25-1130), unless noted.

^c Rates are per 100,000 and are age-adjusted to the IARC world standard population.

- Statistic not shown. Rate based on less than 16 cases for the time interval.

Table V-5
CERVIX UTERI CANCER (Invasive)

SURVIVAL RATES, BY RACE, DIAGNOSIS YEAR, STAGE AND AGE

	All Races, Females			White Females			Black Females		
	All	<50	50+	All	<50	50+	All	<50	50+
<u>5-YR RELATIVE SURVIVAL RATES</u>									
YEAR OF DIAGNOSIS:									
1960-1963 ^a	-	-	-	58	-	-	47	-	-
1970-1973 ^a	-	-	-	64	-	-	61	-	-
1975-1977 ^b	69.9	82.4	58.5	70.6	83.8	58.9	65.0	75.5	55.0
1978-1980 ^b	68.5	78.5	58.9	69.3	79.8	59.5	61.7	70.6	52.7
1981-1983 ^b	68.3	79.6	56.5	69.0	80.8	56.3	61.6	73.7	49.4
1984-1986 ^b	68.1	78.0	56.2	70.0	79.7	57.5	58.3	67.9	48.3
1987-1989 ^b	71.2	79.7	59.4	73.6	82.6	59.9	58.2	63.8	52.9
1990-1992 ^b	70.6	78.9	58.2	71.9	81.2	57.9	58.8	63.3	52.4
1993-1995 ^b	73.3	81.7	60.5	74.7	83.4	60.6	64.0	70.8	54.5
1996-2004 ^b	72.6 ^e	81.2	59.3	73.7 ^e	83.1	58.2	65.3	69.5	59.7
<u>5-YR PERIOD SURVIVAL RATES^{cd}</u>									
YEAR OF DIAGNOSIS:									
1996-2004	70.8	79.0	58.9	72.4	80.8	59.5	60.9	68.0	51.7
<u>STAGE DISTRIBUTION (%) 1996-2004^c</u>									
All Stages									
Number of cases	22,325	12,704	9,621	16,903	9,912	6,991	2,950	1,570	1,380
Percent	100%	100%	100%	100%	100%	100%	100%	100%	100%
Localized	51	62	37	52	63	37	44	53	34
Regional	35	28	44	34	27	44	38	34	43
Distant	10	7	13	9	7	14	11	8	14
Unstaged	5	4	6	5	4	6	7	5	8
<u>5-YR RELATIVE SURVIVAL RATES, 1996-2004^c</u>									
AGE AT DIAGNOSIS:									
<45	81.1	-	-	82.6	-	-	70.3	-	-
45-54	70.4	-	-	71.6	-	-	58.7	-	-
55-64	62.2	-	-	61.5	-	-	56.4	-	-
65-74	58.1	-	-	57.9	-	-	52.0	-	-
75+	42.4	-	-	40.9	-	-	46.1	-	-
Under 65	74.9	-	-	76.2	-	-	64.3	-	-
65 and over	52.0	-	-	51.5	-	-	49.8	-	-
STAGE:									
All Stages	71.2	79.2	59.4	72.5	80.8	59.3	61.8	67.6	54.0
Localized	91.7	93.5	87.5	92.6	94.5	87.8	85.9	86.5	84.1
Regional	55.9	61.5	50.6	56.7	63.0	50.6	47.5	50.6	44.3
Distant	16.6	22.0	12.6	17.5	25.1	11.7	8.9	8.1	9.8
Unstaged	59.4	73.8	44.3	59.2	72.1	44.8	56.6	70.1 ^f	45.1 ^f

^a Rates are based on End Results data from a series of hospital registries and one population-based registry.

^b Rates are from the SEER 9 areas (San Francisco, Connecticut, Detroit, Hawaii, Iowa, New Mexico, Seattle, Utah, Atlanta).

Rates are based on follow-up of patients into 2005.

^c Rates are from the SEER 17 areas (San Francisco, Connecticut, Detroit, Hawaii, Iowa, New Mexico, Seattle, Utah, Atlanta, San Jose-Monterey, Los Angeles, Alaska Native Registry, Rural Georgia, California excluding SF/SJM/LA, Kentucky, Louisiana and New Jersey). California excluding SF/SJM/LA, Kentucky, Louisiana, and New Jersey contribute cases for diagnosis years 2000-2004. The remaining 13 SEER Areas contribute cases for the entire period 1996-2004. Rates are based on follow-up of patients into 2005.

^d Period survival provides a more up-to-date estimate of survival by piecing together the most recent conditional survival estimates from several cohorts. It is computed here using three calendar year blocks (2002-2004: 0-1 year survival), (2001-2003: 1-2 year survival), (2000-2002: 2-3 year survival), (1999-2001: 3-4 year survival), (1998-2000: 4-5 years survival).

^e The difference in rates between 1975-1977 and 1996-2004 is statistically significant ($p < .05$).

^f The standard error of the survival rate is between 5 and 10 percentage points.

^g The standard error of the survival rate is greater than 10 percentage points.

- Statistic could not be calculated due to fewer than 16 cases during the time period.

Table V-6
CERVIX UTERI CANCER (Invasive)

SURVIVAL RATES^a

By Year of Diagnosis

All Races, Females

Year of Diagnosis

	1975- 1979	1980- 1984	1985	1986	1987	1988	1989	1990	1991	1992	1993	1994	1995	1996	1997	1998	1999	2000	2001	2002	2003	2004
Relative Survival Rates (SEER ^b)																						
1-year	87.1	87.8	87.2	86.1	87.6	87.5	89.5	88.4	89.0	87.5	89.5	88.0	89.9	89.2	89.5	88.7	90.0	88.7	86.2	88.1	87.1	86.7
2-year	78.3	77.9	76.3	77.0	77.8	79.4	81.3	80.1	80.1	78.6	80.2	80.8	82.4	82.4	80.9	81.7	83.2	81.6	79.7	79.8	79.5	
3-year	73.6	73.4	71.7	71.9	72.8	75.8	76.6	76.0	74.9	74.6	76.0	77.0	79.0	78.3	76.4	77.1	78.8	76.9	76.3	74.9		
4-year	71.0	70.6	69.3	69.2	69.9	74.0	73.9	73.9	71.6	71.1	73.3	74.5	76.4	75.2	73.6	74.6	76.7	74.8	73.9			
5-year	69.2	68.9	67.5	66.9	67.9	73.2	72.1	72.9	69.7	68.9	71.5	73.1	75.3	74.3	72.5	73.3	75.3	73.1				
6-year	68.2	67.2	66.6	66.4	67.1	71.5	70.9	71.7	68.2	67.8	71.3	71.6	74.0	73.7	71.0	71.9	74.5					
7-year	67.4	65.7	65.5	65.3	66.6	70.6	70.0	71.0	67.7	67.1	70.6	70.5	72.8	72.9	70.7	71.0						
8-year	66.7	64.6	64.5	64.6	66.3	69.9	68.9	70.2	66.6	66.6	70.2	69.8	72.3	72.0	70.4							
9-year	66.2	64.2	63.7	64.6	65.9	69.7	68.2	68.4	66.0	66.3	69.9	69.7	71.5	70.6								
10-year	65.3	63.8	63.0	64.4	65.9	68.8	67.7	67.2	66.0	66.3	69.6	69.1	70.8									
11-year	64.9	63.5	62.9	64.1	65.7	68.7	66.9	67.2	66.0	65.6	69.6	68.5										
12-year	64.4	62.9	62.2	63.8	65.1	68.0	66.3	67.1	66.0	64.8	69.4											
13-year	64.1	62.7	61.9	63.8	64.5	67.5	66.0	66.9	65.5	64.8												
14-year	63.8	62.1	61.9	63.8	63.6	67.4	65.3	66.4	65.1													
15-year	63.5	61.6	61.8	63.3	63.4	66.7	65.3	66.3														
16-year	63.3	61.3	61.5	63.3	62.4	66.4	65.1															
17-year	63.0	60.7	61.2	62.8	62.0	65.8																
18-year	62.8	60.1	61.1	62.6	62.0																	
19-year	62.3	59.9	61.1	62.6																		
20-year	62.0	59.6	60.9																			

^a

Survival rates are relative rates expressed as percents.

^b

Rates are from the SEER 9 areas (San Francisco, Connecticut, Detroit, Hawaii, Iowa, New Mexico, Seattle, Utah, and Atlanta).

Table V-7
CERVIX UTERI CANCER (Invasive)

Risk of Being Diagnosed With Cancer in 10, 20 and 30 Years, Lifetime Risk of Being Diagnosed with Cancer, and
 Lifetime Risk of Dying from Cancer Given Cancer Free At Current Age
 Females, 2003-2005 By Race/Ethnicity

Race/ Ethnicity	Current Age	Risk of Being Diagnosed with Cancer				Risk of Dying from Cancer	
		+10 yrs Percent (95% C.I.)	+20 yrs Percent (95% C.I.)	+30 yrs Percent (95% C.I.)	Eventually Percent (95% C.I.)	Eventually Percent (95% C.I.)	
All Races	0	0.00 (0.00, 0.00)	0.00 (0.00, 0.00)	0.04 (0.04, 0.04)	0.69 (0.67, 0.70)	0.24 (0.23, 0.24)	
	10	0.00 (0.00, 0.00)	0.04 (0.04, 0.04)	0.16 (0.15, 0.16)	0.70 (0.68, 0.71)	0.24 (0.23, 0.24)	
	20	0.04 (0.04, 0.04)	0.15 (0.15, 0.16)	0.29 (0.28, 0.30)	0.70 (0.68, 0.71)	0.24 (0.23, 0.24)	
	30	0.12 (0.11, 0.12)	0.26 (0.25, 0.26)	0.39 (0.38, 0.39)	0.66 (0.65, 0.68)	0.24 (0.23, 0.24)	
	40	0.14 (0.14, 0.15)	0.27 (0.26, 0.28)	0.39 (0.38, 0.40)	0.55 (0.54, 0.57)	0.22 (0.22, 0.22)	
	50	0.13 (0.13, 0.14)	0.26 (0.25, 0.27)	0.35 (0.34, 0.37)	0.42 (0.41, 0.43)	0.19 (0.18, 0.19)	
	60	0.13 (0.12, 0.14)	0.23 (0.22, 0.24)	0.29 (0.27, 0.30)	0.30 (0.29, 0.31)	0.15 (0.14, 0.15)	
	70	0.11 (0.11, 0.12)	0.17 (0.16, 0.18)	- (- , -)	0.19 (0.18, 0.20)	0.11 (0.10, 0.11)	
80	0.08 (0.07, 0.09)	- (- , -)	- (- , -)	0.10 (0.09, 0.11)	0.07 (0.07, 0.08)		
White	0	0.00 (0.00, 0.00)	0.00 (0.00, 0.00)	0.04 (0.04, 0.05)	0.66 (0.65, 0.68)	0.21 (0.21, 0.22)	
	10	0.00 (0.00, 0.00)	0.04 (0.04, 0.05)	0.17 (0.16, 0.17)	0.67 (0.65, 0.68)	0.21 (0.21, 0.22)	
	20	0.04 (0.04, 0.04)	0.16 (0.16, 0.17)	0.30 (0.29, 0.31)	0.67 (0.65, 0.68)	0.22 (0.21, 0.22)	
	30	0.13 (0.12, 0.13)	0.26 (0.25, 0.27)	0.38 (0.37, 0.40)	0.63 (0.61, 0.65)	0.21 (0.21, 0.22)	
	40	0.14 (0.13, 0.14)	0.26 (0.25, 0.27)	0.37 (0.36, 0.38)	0.51 (0.50, 0.52)	0.20 (0.19, 0.20)	
	50	0.13 (0.12, 0.13)	0.24 (0.23, 0.25)	0.33 (0.31, 0.34)	0.38 (0.37, 0.39)	0.17 (0.16, 0.17)	
	60	0.12 (0.11, 0.13)	0.21 (0.20, 0.22)	0.25 (0.24, 0.26)	0.26 (0.25, 0.28)	0.13 (0.12, 0.13)	
	70	0.10 (0.09, 0.11)	0.15 (0.14, 0.16)	- (- , -)	0.16 (0.15, 0.17)	0.09 (0.09, 0.10)	
80	0.07 (0.06, 0.08)	- (- , -)	- (- , -)	0.09 (0.08, 0.10)	0.06 (0.06, 0.07)		
Black	0	0.00 (0.00, 0.00)	0.00 (0.00, 0.01)	0.04 (0.03, 0.05)	0.87 (0.82, 0.93)	0.41 (0.40, 0.43)	
	10	0.00 (0.00, 0.00)	0.04 (0.03, 0.05)	0.15 (0.13, 0.16)	0.89 (0.84, 0.95)	0.42 (0.41, 0.44)	
	20	0.04 (0.03, 0.05)	0.14 (0.13, 0.16)	0.31 (0.28, 0.33)	0.89 (0.84, 0.95)	0.42 (0.41, 0.44)	
	30	0.10 (0.09, 0.12)	0.27 (0.25, 0.29)	0.43 (0.41, 0.46)	0.86 (0.81, 0.91)	0.42 (0.40, 0.44)	
	40	0.17 (0.15, 0.18)	0.34 (0.31, 0.36)	0.52 (0.48, 0.55)	0.77 (0.72, 0.82)	0.40 (0.38, 0.42)	
	50	0.18 (0.16, 0.20)	0.36 (0.33, 0.40)	0.51 (0.46, 0.55)	0.63 (0.58, 0.68)	0.36 (0.34, 0.38)	
	60	0.20 (0.18, 0.23)	0.36 (0.32, 0.40)	0.46 (0.41, 0.51)	0.49 (0.44, 0.55)	0.31 (0.29, 0.32)	
	70	0.19 (0.16, 0.22)	0.31 (0.26, 0.35)	- (- , -)	0.34 (0.30, 0.40)	0.24 (0.22, 0.26)	
80	0.18 (0.14, 0.22)	- (- , -)	- (- , -)	0.23 (0.18, 0.29)	0.18 (0.16, 0.20)		

Devcan Version 7.0.0, April 2008, National Cancer Institute (<http://srab.cancer.gov/devcan/>).

Source: Incidence data are from the SEER 17 areas (San Francisco, Connecticut, Detroit, Hawaii, Iowa, New Mexico, Seattle, Utah, Atlanta, San Jose-Monterey, Los Angeles, Alaska Native Registry, Rural Georgia, California excluding SF/SJM/LA, Kentucky, Louisiana and New Jersey). Mortality data are from the NCHS public use data file for the total US.

- Statistic could not be calculated.

A percent or confidence interval value of 0.00 represents a value that is below 0.005.

Table V-7 - continued
 CERVIX UTERI CANCER (Invasive)

Risk of Being Diagnosed With Cancer in 10, 20 and 30 Years, Lifetime Risk of Being Diagnosed with Cancer, and
 Lifetime Risk of Dying from Cancer Given Cancer Free At Current Age
 Females, 2003-2005 By Race/Ethnicity

Race/ Ethnicity	Current Age	Risk of Being Diagnosed with Cancer				Risk of Dying from Cancer	
		+10 yrs Percent (95% C.I.)	+20 yrs Percent (95% C.I.)	+30 yrs Percent (95% C.I.)	Eventually Percent (95% C.I.)	Eventually Percent (95% C.I.)	
Asian/ Pacific Islander	0	0.00 (0.00, 0.00)	0.00 (0.00, 0.00)	0.01 (0.01, 0.02)	0.77 (0.71, 0.86)	0.28 (0.24, 0.34)	
	10	0.00 (0.00, 0.00)	0.01 (0.01, 0.02)	0.08 (0.07, 0.09)	0.78 (0.72, 0.86)	0.29 (0.25, 0.35)	
	20	0.01 (0.01, 0.02)	0.08 (0.07, 0.09)	0.22 (0.20, 0.24)	0.78 (0.72, 0.86)	0.29 (0.25, 0.35)	
	30	0.07 (0.06, 0.08)	0.20 (0.18, 0.22)	0.33 (0.31, 0.36)	0.77 (0.71, 0.85)	0.28 (0.24, 0.35)	
	40	0.14 (0.12, 0.15)	0.27 (0.24, 0.29)	0.42 (0.39, 0.46)	0.70 (0.64, 0.79)	0.28 (0.24, 0.34)	
	50	0.13 (0.12, 0.15)	0.29 (0.26, 0.32)	0.44 (0.40, 0.48)	0.58 (0.52, 0.66)	0.26 (0.22, 0.32)	
	60	0.16 (0.14, 0.19)	0.31 (0.28, 0.35)	0.42 (0.37, 0.47)	0.45 (0.40, 0.54)	0.22 (0.18, 0.28)	
	70	0.16 (0.14, 0.20)	0.28 (0.23, 0.33)	- (- , -)	0.31 (0.26, 0.40)	0.18 (0.14, 0.25)	
	80	0.13 (0.10, 0.18)	- (- , -)	- (- , -)	0.18 (0.13, 0.26)	0.13 (0.09, 0.21)	
American Indian/ Alaska Native ^a	0	0.00 (0.00, 0.05)	0.00 (0.00, 0.05)	0.04 (0.01, 0.09)	0.68 (0.48, 1.21)	0.35 (0.26, 0.51)	
	10	0.00 (0.00, 0.02)	0.04 (0.01, 0.08)	0.11 (0.06, 0.18)	0.69 (0.48, 1.23)	0.35 (0.26, 0.52)	
	20	0.04 (0.01, 0.08)	0.11 (0.06, 0.18)	0.20 (0.14, 0.29)	0.69 (0.49, 1.24)	0.35 (0.26, 0.52)	
	30	0.08 (0.04, 0.13)	0.17 (0.11, 0.25)	0.26 (0.18, 0.36)	0.66 (0.46, 1.21)	0.35 (0.26, 0.52)	
	40	0.09 (0.05, 0.16)	0.18 (0.12, 0.28)	0.30 (0.20, 0.45)	0.60 (0.40, 1.16)	0.32 (0.23, 0.50)	
	50	0.09 (0.05, 0.17)	0.21 (0.12, 0.35)	0.40 (0.25, 0.62)	0.52 (0.32, 1.10)	0.29 (0.20, 0.47)	
	60	0.13 (0.06, 0.25)	0.32 (0.18, 0.54)	0.45 (0.25, 0.75)	0.45 (0.25, 1.06)	0.24 (0.15, 0.43)	
	70	0.22 (0.10, 0.45)	0.37 (0.18, 0.69)	- (- , -)	0.37 (0.18, 1.07)	0.22 (0.12, 0.44)	
	80	0.19 (0.05, 0.52)	- (- , -)	- (- , -)	0.20 (0.05, 1.11)	0.18 (0.08, 0.47)	
Hispanic ^b	0	0.00 (0.00, 0.00)	0.00 (0.00, 0.00)	0.04 (0.03, 0.04)	1.18 (1.12, 1.26)	0.35 (0.32, 0.38)	
	10	0.00 (0.00, 0.00)	0.04 (0.03, 0.04)	0.18 (0.17, 0.20)	1.19 (1.13, 1.27)	0.35 (0.32, 0.38)	
	20	0.04 (0.03, 0.04)	0.18 (0.17, 0.19)	0.39 (0.37, 0.42)	1.19 (1.13, 1.27)	0.35 (0.32, 0.38)	
	30	0.14 (0.13, 0.16)	0.36 (0.34, 0.38)	0.59 (0.56, 0.62)	1.16 (1.10, 1.24)	0.35 (0.32, 0.38)	
	40	0.22 (0.20, 0.23)	0.45 (0.42, 0.47)	0.68 (0.65, 0.72)	1.03 (0.96, 1.10)	0.33 (0.30, 0.36)	
	50	0.23 (0.21, 0.25)	0.48 (0.44, 0.51)	0.68 (0.64, 0.73)	0.82 (0.76, 0.90)	0.29 (0.26, 0.32)	
	60	0.25 (0.22, 0.28)	0.47 (0.42, 0.51)	0.58 (0.53, 0.64)	0.61 (0.55, 0.68)	0.24 (0.21, 0.27)	
	70	0.24 (0.20, 0.27)	0.36 (0.31, 0.41)	- (- , -)	0.39 (0.34, 0.46)	0.18 (0.15, 0.21)	
	80	0.15 (0.12, 0.20)	- (- , -)	- (- , -)	0.20 (0.15, 0.27)	0.13 (0.10, 0.17)	

Devcan Version 7.0.0, April 2008, National Cancer Institute (<http://srab.cancer.gov/devcan/>).

Source: Incidence data are from the SEER 17 areas (San Francisco, Connecticut, Detroit, Hawaii, Iowa, New Mexico, Seattle, Utah, Atlanta, San Jose-Monterey, Los Angeles, Alaska Native Registry, Rural Georgia, California excluding SF/SJM/LA, Kentucky, Louisiana and New Jersey). Mortality data are from the NCHS public use data file for the total US.

^a Underlying incidence and mortality data for American Indian/Alaska Native are based on the CHSDA (Contract Health Service Delivery Area) counties.

^b Hispanic is not mutually exclusive from whites, blacks, Asian/Pacific Islanders, and American Indians/Alaska Natives. Underlying incidence data for Hispanics are based on NHIA and exclude cases from the Alaska Native Registry and Kentucky. Underlying mortality data for Hispanics exclude deaths from Minnesota, New Hampshire and North Dakota.

- Statistic could not be calculated.

A percent or confidence interval value of 0.00 represents a value that is below 0.005.

Table V-8
CERVIX UTERI CANCER (Invasive)

SEER INCIDENCE AND U.S. MORTALITY
AGE-ADJUSTED RATES AND TRENDS^a
 By Race/Ethnicity

<u>SEER Incidence</u>	Rate 2001-2005 ^b		Seer 13 Areas ^c		SEER 9 Areas ^d	
	Rate per 100,000 persons		Trend 1996-2005		Trend 1996-2005	
			AAPC (%)		AAPC (%)	
RACE/ETHNICITY	Females		Females		Females	
All Races	8.4		-2.8*		-3.8*	
White	8.2		-2.4*		-2.6*	
White Hispanic ^e	13.7		-3.6*		-	
White Non-Hispanic ^e	7.0		-2.6*		-	
Black	10.8		-3.9*		-3.8*	
Asian/Pacific Islander	8.0		-4.8*		-	
Amer Ind/Alaska Nat ^f	6.9		-2.3		-	
Hispanic ^e	13.2		-3.5*		-	
<u>U.S. Mortality^g</u>	Rate 2001-2005		Trend 1996-2005 ^h			
	Rate per 100,000 persons		AAPC (%)			
RACE/ETHNICITY	Females		Females			
All Races	2.5		-3.1*			
White	2.3		-2.8*			
White Hispanic ^e	3.3		-3.2*			
White Non-Hispanic ^e	2.2		-2.7*			
Black	4.7		-4.6*			
Asian/Pacific Islander	2.2		-4.1*			
Amer Ind/Alaska Nat						
Total U.S.	2.7		-4.1*			
CHSDA Counties	3.7		-3.2*			
Non-CHSDA Counties	1.4		-			
Hispanic ^e	3.2		-3.1*			

The AAPC is the Average Annual Percent Change over the time interval. The AAPCs are calculated by the Joinpoint Regression Program Version 3.3, April 2008, National Cancer Institute.

- Statistic not shown. Rate based on less than 16 cases for the time interval. Trend based on less than 10 cases for at least one year within the time interval.

a Rates are age-adjusted to the 2000 US Std Population (19 age groups - Census P25-1130). Trends are based on rates age-adjusted to the 2000 US Std Population (19 age groups - Census P25-1130).

b Incidence data used in calculating the 2001-2005 rates are from the SEER 17 areas (San Francisco, Connecticut, Detroit, Hawaii, Iowa, New Mexico, Seattle, Utah, Atlanta, San Jose-Monterey, Los Angeles, Alaska Native Registry, Rural Georgia, California excluding SF/SJM/LA, Kentucky, Louisiana and New Jersey).

c The SEER 13 areas are San Francisco, Connecticut, Detroit, Hawaii, Iowa, New Mexico, Seattle, Utah, Atlanta, San Jose-Monterey, Los Angeles, Alaska Native Registry and Rural Georgia. The 1996-2005 AAPC trends are based on a Joinpoint analysis using diagnosis years 1992-2005.

d The SEER 9 areas are San Francisco, Connecticut, Detroit, Hawaii, Iowa, New Mexico, Seattle, Utah, and Atlanta. The 1996-2005 AAPC trends are based on a Joinpoint analysis using diagnosis years 1975-2005.

e Hispanic and Non-Hispanic are not mutually exclusive from whites, blacks, Asian/Pacific Islanders, and American Indians/Alaska Natives. Incidence data for Hispanics and Non-Hispanics are based on NHIA and exclude cases from the Alaska Native Registry and Kentucky. The 2001-2005 Hispanic and Non-Hispanic death rates exclude deaths from Minnesota, New Hampshire and North Dakota. The 1996-2005 Hispanic and Non-Hispanic mortality trends exclude deaths from Connecticut, Maine, Maryland, Minnesota, New Hampshire, New York, North Dakota, Oklahoma and Vermont.

f Incidence data for American Indian/Alaska Native are based on the CHSDA(Contract Health Service Delivery Area) counties.

g US Mortality Files, National Center for Health Statistics, CDC.

h The 1996-2005 mortality AAPCs are based on a Joinpoint analysis using years of death 1992-2005.

* The APC is significantly different from zero (p<.05).

Table V-9
CERVIX UTERI CANCER (Invasive)

AGE-ADJUSTED SEER INCIDENCE RATES^a
By Registry, Race/Ethnicity and Age

	All Races			Whites			Blacks		
	All Ages	Ages <50	Ages 50+	All Ages	Ages <50	Ages 50+	All Ages	Ages <50	Ages 50+
<u>SEER INCIDENCE RATES^a, 2001-2005</u>									
REGISTRY									
Atlanta & Rural Georgia	8.1	5.5	15.0	7.0	5.8	10.3	10.8	5.1	25.7
Atlanta	8.0	5.5	14.7	7.0	5.7	10.5	10.5	5.1	24.5
Rural Georgia	9.8	-	19.5	-	-	-	15.8	-	44.1
California	8.5	6.5	14.0	8.7	6.9	13.3	8.0	4.9	16.0
Greater Bay Area	6.7	5.1	10.8	6.7	5.5	9.9	8.0	5.1	15.6
San Francisco-Oakland	6.2	4.6	10.4	6.0	4.7	9.3	7.9	5.4	14.2
San Jose-Monterey	7.5	6.0	11.7	8.0	6.8	10.9	-	-	-
Los Angeles	10.9	7.8	19.0	11.5	8.5	19.1	8.7	5.5	16.9
Greater California	8.0	6.3	12.6	8.1	6.6	11.9	7.1	4.2	14.6
Connecticut	6.6	4.7	11.6	6.3	4.8	10.3	11.1	4.8	27.5
Detroit	8.5	6.5	14.0	7.5	6.0	11.4	12.1	8.1	22.4
Hawaii	7.6	6.2	11.1	6.7	5.6	9.6	-	-	-
Iowa	7.3	6.1	10.3	7.2	6.1	10.0	-	-	-
Kentucky	9.9	7.9	15.2	9.6	7.7	14.5	14.0	9.2	26.5
Louisiana	9.7	8.0	14.1	8.2	7.3	10.4	13.6	9.6	23.9
New Jersey	9.2	6.8	15.8	8.9	6.7	14.5	13.2	8.2	26.2
New Mexico	9.0	7.1	13.8	9.0	7.4	13.0	-	-	-
Seattle-Puget Sound	6.9	5.8	9.8	6.7	5.8	9.1	6.0	-	-
Utah	6.1	4.9	9.2	6.0	5.0	8.6	-	-	-
9 SEER Areas ^b	7.2	5.6	11.6	6.9	5.6	10.2	10.1	5.8	21.6
11 SEER Areas ^b	8.1	6.1	13.3	7.9	6.3	12.1	9.8	5.7	20.4
13 SEER Areas ^b	8.1	6.1	13.3	7.9	6.3	12.1	9.8	5.7	20.7
17 SEER Areas ^b	8.4	6.4	13.6	8.2	6.6	12.4	10.8	6.6	21.8

^a Rates are per 100,000 and are age-adjusted to the 2000 US Std Population (19 age groups - Census P25-1130)

^b The SEER 9 areas are San Francisco, Connecticut, Detroit, Hawaii, Iowa, New Mexico, Seattle, Utah and Atlanta.

The SEER 11 areas comprise the SEER 9 areas plus San Jose-Monterey and Los Angeles.

The SEER 13 areas comprise the SEER 11 areas plus the Alaska Native Registry and Rural Georgia.

The SEER 17 areas comprise the SEER 13 areas plus California excluding SF/SJM/LA, Kentucky, Louisiana and New Jersey.

- Statistic not shown. Rate based on less than 16 cases for the time interval.

Table V-10
CERVIX UTERI CANCER (Invasive)

AGE-ADJUSTED SEER DEATH RATES^a
By Registry, Race/Ethnicity and Age

	All Races			Whites			Blacks		
	All Ages	Ages <50	Ages 50+	All Ages	Ages <50	Ages 50+	All Ages	Ages <50	Ages 50+
<u>SEER DEATH RATES^a, 2001-2005</u>									
REGISTRY									
Atlanta & Rural Georgia	2.5	1.0	6.4	2.0	1.0	4.6	3.5	1.1	10.0
Atlanta	2.5	1.0	6.4	2.0	1.0	4.8	3.5	1.1	9.6
Rural Georgia	-	-	-	-	-	-	-	-	-
California	2.4	1.2	5.6	2.4	1.2	5.3	3.5	1.6	8.5
Greater Bay Area	1.7	0.8	4.1	1.6	0.8	3.7	2.9	1.7	6.1
San Francisco-Oakland	1.7	0.7	4.1	1.6	0.7	3.8	3.0	-	6.1
San Jose-Monterey	1.8	0.9	4.2	1.7	0.9	3.6	-	-	-
Los Angeles	3.2	1.4	7.9	3.2	1.5	7.6	4.3	1.9	10.7
Greater California	2.3	1.2	5.0	2.2	1.3	4.8	2.8	1.2	7.0
Connecticut	1.7	0.6	4.7	1.7	0.6	4.6	2.3	-	-
Detroit	2.5	1.2	6.1	2.0	1.0	4.6	4.4	1.8	11.2
Hawaii	2.0	1.1	4.3	2.5	-	-	-	-	-
Iowa	2.2	1.2	5.1	2.2	1.2	5.0	-	-	-
Kentucky	2.9	1.6	6.1	2.7	1.5	5.7	5.6	3.0	12.6
Louisiana	3.0	1.8	6.1	2.0	1.3	3.9	5.5	2.9	12.3
New Jersey	2.7	1.4	6.1	2.5	1.3	5.4	5.0	2.1	12.6
New Mexico	2.6	1.3	6.0	2.6	1.3	5.9	-	-	-
Seattle-Puget Sound	1.7	0.7	4.2	1.5	0.7	3.8	-	-	-
Utah	1.5	0.7	3.6	1.5	0.7	3.6	-	-	-
9 SEER Areas ^b	2.0	0.9	4.9	1.9	0.9	4.4	3.5	1.3	9.2
11 SEER Areas ^b	2.3	1.0	5.5	2.1	1.0	5.0	3.7	1.4	9.5
13 SEER Areas ^b	2.3	1.0	5.5	2.1	1.0	5.0	3.7	1.4	9.6
17 SEER Areas ^b	2.4	1.2	5.5	2.2	1.2	5.0	4.2	1.8	10.4
Total U.S.	2.5	1.3	5.7	2.3	1.2	5.0	4.7	2.0	11.7

^a US Mortality Files, National Center for Health Statistics, Centers for Disease Control and Prevention. Rates are per 100,000 and are age-adjusted to the 2000 US Std Population (19 age groups - Census P25-1130).

^b The SEER 9 areas are San Francisco, Connecticut, Detroit, Hawaii, Iowa, New Mexico, Seattle, Utah and Atlanta.

The SEER 11 areas comprise the SEER 9 areas plus San Jose-Monterey and Los Angeles.

The SEER 13 areas comprise the SEER 11 areas plus the Alaska Native Registry and Rural Georgia.

The SEER 17 areas comprise the SEER 13 areas plus California excluding SF/SJM/LA, Kentucky, Louisiana and New Jersey.

- Statistic not shown. Rate based on less than 16 cases for the time interval.

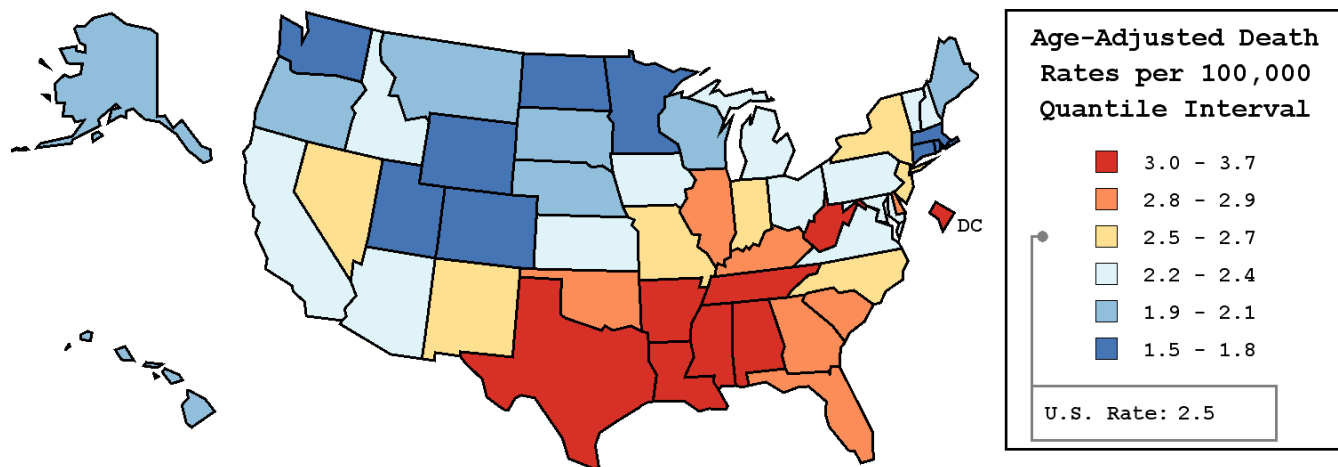
Table V-11
CERVIX UTERI CANCER (Invasive)

AVERAGE ANNUAL AGE-ADJUSTED CANCER DEATH^a RATES BY STATE, ALL RACES, 2001-2005

Females

State	Rate	SE	Rank	PD
TOTAL U.S.	2.5	0.02		
High Five States				
D.C.	3.7	0.49	(01)	48.0 ^c
Mississippi	3.6 ^b	0.22	(02)	44.0 ^c
Arkansas	3.6 ^b	0.22	(03)	44.0 ^c
West Virginia	3.5 ^b	0.26	(04)	40.0 ^c
Texas	3.2 ^b	0.08	(05)	28.0 ^c
Low Five States				
Connecticut	1.7 ^b	0.13	(47)	-32.0 ^c
North Dakota	1.7	0.31	(48)	-32.0 ^c
Minnesota	1.6 ^b	0.11	(49)	-36.0 ^c
Massachusetts	1.5 ^b	0.09	(50)	-40.0 ^c
Utah	1.5 ^b	0.18	(51)	-40.0 ^c

State	Rate	SE	Rank	PD	State	Rate	SE	Rank	PD
Alabama	3.1 ^b	0.16	(07)	24.0 ^c	Montana	1.9	0.27	(40)	-24.0 ^c
Alaska	1.9	0.39	(42)	-24.0 ^c	Nebraska	2.1	0.21	(36)	-16.0 ^c
Arizona	2.4	0.13	(26)	-4.0	Nevada	2.7	0.22	(17)	8.0
Arkansas	3.6 ^b	0.22	(03)	44.0 ^c	New Hampshire	2.3	0.25	(29)	-8.0
California	2.4	0.05	(25)	-4.0	New Jersey	2.7	0.10	(16)	8.0
Colorado	1.8 ^b	0.13	(44)	-28.0 ^c	New Mexico	2.6	0.23	(19)	4.0
Connecticut	1.7 ^b	0.13	(47)	-32.0 ^c	New York	2.6	0.07	(18)	4.0
Delaware	2.9	0.36	(09)	16.0 ^c	North Carolina	2.5	0.11	(21)	0.0
D.C.	3.7	0.49	(01)	48.0 ^c	North Dakota	1.7	0.31	(48)	-32.0 ^c
Florida	2.8 ^b	0.08	(14)	12.0	Ohio	2.4	0.09	(23)	-4.0
Georgia	2.8	0.11	(15)	12.0	Oklahoma	2.8	0.18	(12)	12.0
Hawaii	2.0	0.25	(38)	-20.0 ^c	Oregon	2.1	0.15	(35)	-16.0 ^c
Idaho	2.2	0.25	(34)	-12.0	Pennsylvania	2.3	0.08	(28)	-8.0
Illinois	2.8 ^b	0.09	(11)	12.0	Rhode Island	1.8	0.25	(43)	-28.0 ^c
Indiana	2.5	0.12	(22)	0.0	South Carolina	2.8	0.16	(13)	12.0
Iowa	2.2	0.17	(30)	-12.0	South Dakota	2.0	0.32	(37)	-20.0 ^c
Kansas	2.4	0.18	(24)	-4.0	Tennessee	3.2 ^b	0.14	(06)	28.0 ^c
Kentucky	2.9	0.16	(10)	16.0 ^c	Texas	3.2 ^b	0.08	(05)	28.0 ^c
Louisiana	3.0	0.16	(08)	20.0 ^c	Utah	1.5 ^b	0.18	(51)	-40.0 ^c
Maine	1.9	0.22	(39)	-24.0 ^c	Vermont	2.2	0.35	(32)	-12.0
Maryland	2.4	0.13	(27)	-4.0	Virginia	2.2	0.11	(31)	-12.0
Massachusetts	1.5 ^b	0.09	(50)	-40.0 ^c	Washington	1.8 ^b	0.11	(46)	-28.0 ^c
Michigan	2.2 ^b	0.09	(33)	-12.0	West Virginia	3.5 ^b	0.26	(04)	40.0 ^c
Minnesota	1.6 ^b	0.11	(49)	-36.0 ^c	Wisconsin	1.9 ^b	0.11	(41)	-24.0 ^c
Mississippi	3.6 ^b	0.22	(02)	44.0 ^c	Wyoming	1.8	0.37	(45)	-28.0 ^c
Missouri	2.6	0.13	(20)	4.0					



^a US Mortality Files, National Center for Health Statistics, Centers for Disease Control and Prevention. Rates are per 100,000 and are age-adjusted to the 2000 US Std Population (19 age groups - Census P25-1130).
^b Difference between state rate and total U.S. rate is statistically significant ($p \leq .0002$).
^c Absolute percent difference between state rate and total U.S. rate is 15% or more.
SE Standard error of the rate.
PD Percent difference between state rate and total U.S. rate.

Table V-12
CERVIX UTERI CANCER (Invasive)

Estimated United States Cancer Prevalence Counts^a on January 1, 2005
By Race/Ethnicity and Years Since Diagnosis

Years Since Diagnosis	0 to <5	5 to <10	10 to <15	15 to <20	20 to <25	25 to <30	0 to <15 ^e	0 to <30 ^e	>=30 ^g	Complete ^h
<u>Race</u>										
All Races ^b	40,655	39,359	35,168	29,369	23,160	22,241	115,182	189,952	59,804	249,756
White ^b	31,965	31,027	29,121	24,595	19,114	18,103	92,113	153,925	49,832	203,757
Black ^b	6,045	5,475	4,026	3,232	3,093	3,258	15,546	25,129	+	+
Asian/Pacific Islander ^c	1,960	1,772	1,409	+	+	+	5,141	+	+	+
Hispanic ^d	8,273	6,351	5,650	+	+	+	20,274	+	+	+

Estimated prevalence percent^a on January 1, 2005, of the SEER 11 population diagnosed in the previous 15 years
By Age at Prevalence and Race/Ethnicity

Age at Prevalence	All Ages	0-9	10-19	20-29	Age Specific (Crude)						Age-Adjusted ^f
					30-39	40-49	50-59	60-69	70-79	80+	All Ages
<u>Race</u>											
All Races ^c	0.0837%	-	0.0003%	0.0106%	0.0847%	0.1657%	0.1750%	0.1550%	0.1374%	0.0852%	0.0817%
White ^c	0.0849%	-	0.0003%	0.0115%	0.0963%	0.1758%	0.1722%	0.1427%	0.1207%	0.0643%	0.0823%
Black ^c	0.0763%	-	-	0.0104%	0.0680%	0.1433%	0.1713%	0.1864%	0.1962%	0.1855%	0.0841%
Asian/Pacific Islander ^c	0.0791%	-	-	0.0032%	0.0324%	0.1173%	0.1821%	0.2021%	0.2002%	0.1900%	0.0764%
Hispanic ^d	0.1004%	-	-	0.0115%	0.0929%	0.2617%	0.3186%	0.3077%	0.3045%	0.1828%	0.1387%

^a US 2005 cancer prevalence counts are based on 2005 cancer prevalence proportions from the SEER registries and 1/1/2005 US population estimates based on the average of 2004 and 2005 population estimates from the US Bureau of the Census. Prevalence was calculated using the First Malignant Primary Only for a person.

^{b c d} Statistics based on (b) SEER 9 Areas (c) SEER 11 Areas and Rural Georgia (d) NHIA for Hispanic for SEER 11 Areas and Rural Georgia.

^e Maximum limited-duration prevalence: 30 years for 1975-2005 SEER 9 data; 15 years for 1990-2005 SEER 11 data (used to calculate prevalence for Hispanics and Asian Pacific Islanders).

^f Percentages are age-adjusted to the 2000 US Standard Population (19 age groups - Census P25-1130) by 5-year age groups.

^{g h i} (g) Cases diagnosed more than 30 years ago were estimated using the completeness index method (Capocaccia et. al. 1997, Merrill et. al. 2000). (h) Complete prevalence is obtained by summing 0 to <30 and >=30. (i) Age-specific completeness index was approximated using empirical data from historical Connecticut tumor registry.

- Statistic not shown. Statistic based on fewer than 5 cases estimated alive in SEER for the time interval.

+ Not available.

Table V-13

CERVIX UTERI CANCER(Invasive)

Percent Distribution and Counts by Histology among Histologically Confirmed Cases, 2001-2005
Females by Race

Histology ^a	All Races		White		Black		API		AI/AN		Hispanic ^b	
	Count	Percent	Count	Percent	Count	Percent	Count	Percent	Count	Percent	Count	Percent
Carcinoma	15,756	98.5%	12,017	98.5%	2,058	98.5%	1,409	98.7%	81	100.0%	3,670	98.9%
Epidermoid carcinoma ^c	11,095	69.4%	8,315	68.2%	1,635	78.2%	956	66.9%	58	71.6%	2,712	73.1%
(8050-8131)												
Squamous cell carcinoma	7,033	44.0%	5,207	42.7%	1,143	54.7%	573	40.1%	37	45.7%	1,547	41.7%
(8070)												
Squamous cell,	1,288	8.1%	974	8.0%	196	9.4%	100	7.0%	-	-	385	10.4%
keratinizing (8071)												
Squamous cell,	1,600	10.0%	1,249	10.2%	173	8.3%	155	10.9%	-	-	445	12.0%
non-keratinizing (8072)												
Squamous cell,	945	5.9%	729	6.0%	87	4.2%	96	6.7%	-	-	274	7.4%
Microinvasive (8076)												
Other (8050-8069,	229	1.4%	156	1.3%	36	1.7%	32	2.2%	-	-	61	1.6%
8073-8075,8077-8131)												
Adenocarcinoma	3,941	24.6%	3,173	26.0%	321	15.4%	379	26.5%	16	19.8%	817	22.0%
(8140-8147,8160-8162,												
8180-8221,8250-8507,8514,												
8520-8551,8560,8570-8574,												
8576,8940-8941)												
Adenocarcinoma, NOS	2,031	12.7%	1,646	13.5%	148	7.1%	194	13.6%	-	-	425	11.4%
(8140)												
Adenosquamous (8560,8570)	693	4.3%	542	4.4%	75	3.6%	71	5.0%	-	-	171	4.6%
Other adenocarcinomas	1,217	7.6%	985	8.1%	98	4.7%	114	8.0%	-	-	221	6.0%
(8141-8147,8160-8162,												
8180-8221,8250-8507,												
8514,8520-8551,												
8571-8574,8576,												
8940-8941)												
Other specific carcinomas	266	1.7%	189	1.5%	30	1.4%	43	3.0%	-	-	54	1.5%
(8012-8015,8030-8046,												
8150-8155,8170-8175,												
8230-8249,8508,8510-8513,												
8561-8562,8575,8580-8671)												
Unspecified, Carcinoma, NOS	454	2.8%	340	2.8%	72	3.4%	31	2.2%	-	-	87	2.3%
(8010-8011)												

Source: SEER 17 areas (San Francisco, Connecticut, Detroit, Hawaii, Iowa, New Mexico, Seattle, Utah, Atlanta, San Jose-Monterey, Los Angeles, Alaska Native Registry, Rural Georgia, California excluding SF/SJM/LA, Kentucky, Louisiana and New Jersey). Percents may not sum to 100 due to rounding.

- Statistic not shown due to fewer than 16 cases during the time period.

^a Excludes Kaposi Sarcoma, mesothelioma, lymphomas, leukemias, myelomas, lymphoreticular, and immunoproliferative diseases.

^b Hispanic is not mutually exclusive from whites, blacks, Asian/Pacific Islanders, and American Indians/Alaska Natives.

Underlying incidence data for Hispanics are based on NHIA and exclude cases from the Alaska Native Registry and Kentucky.

^c Epidermoid carcinoma includes squamous, basal, and transitional cell carcinomas.

Table V-13 - continued

CERVIX UTERI CANCER(Invasive)

Percent Distribution and Counts by Histology among Histologically Confirmed Cases, 2001-2005
Females by Race

Histology ^a	All Races		White		Black		API		AI/AN		Hispanic ^b	
	Count	Percent	Count	Percent	Count	Percent	Count	Percent	Count	Percent	Count	Percent
Sarcoma (8680-8713,8800-8921, 9040-9044,9120-9136, 9150-9252,9370-9373, 9540-9582)	58	0.4%	47	0.4%	-	-	-	-	-	-	-	-
Other specific types (8720-8790,8930-8936, 8950-9030,9060-9110, 9260-9365,9380-9539)	120	0.8%	90	0.7%	17	0.8%	-	-	-	-	17	0.5%
Unspecified (8000-8005)	60	0.4%	46	0.4%	-	-	-	-	-	-	-	-
Total ^c	15,994	100.0%	12,200	100.0%	2,090	100.0%	1,428	100.0%	81	100.0%	3,712	100.0%

Source: SEER 17 areas (San Francisco, Connecticut, Detroit, Hawaii, Iowa, New Mexico, Seattle, Utah, Atlanta, San Jose-Monterey, Los Angeles, Alaska Native Registry, Rural Georgia, California excluding SF/SJM/LA, Kentucky, Louisiana and New Jersey). Percents may not sum to 100 due to rounding.

- Statistic not shown due to fewer than 16 cases during the time period.

^a Excludes Kaposi Sarcoma, mesothelioma, lymphomas, leukemias, myelomas, lymphoreticular, and immunoproliferative diseases.

^b Hispanic is not mutually exclusive from whites, blacks, Asian/Pacific Islanders, and American Indians/Alaska Natives.

^c Underlying incidence data for Hispanics are based on NHIA and exclude cases from the Alaska Native Registry and Kentucky.

^c Total includes carcinoma cases from the previous page.

SEER Incidence, Delay Adjusted Incidence and US Death Rates^a Cervix Uteri Cancer, by Race

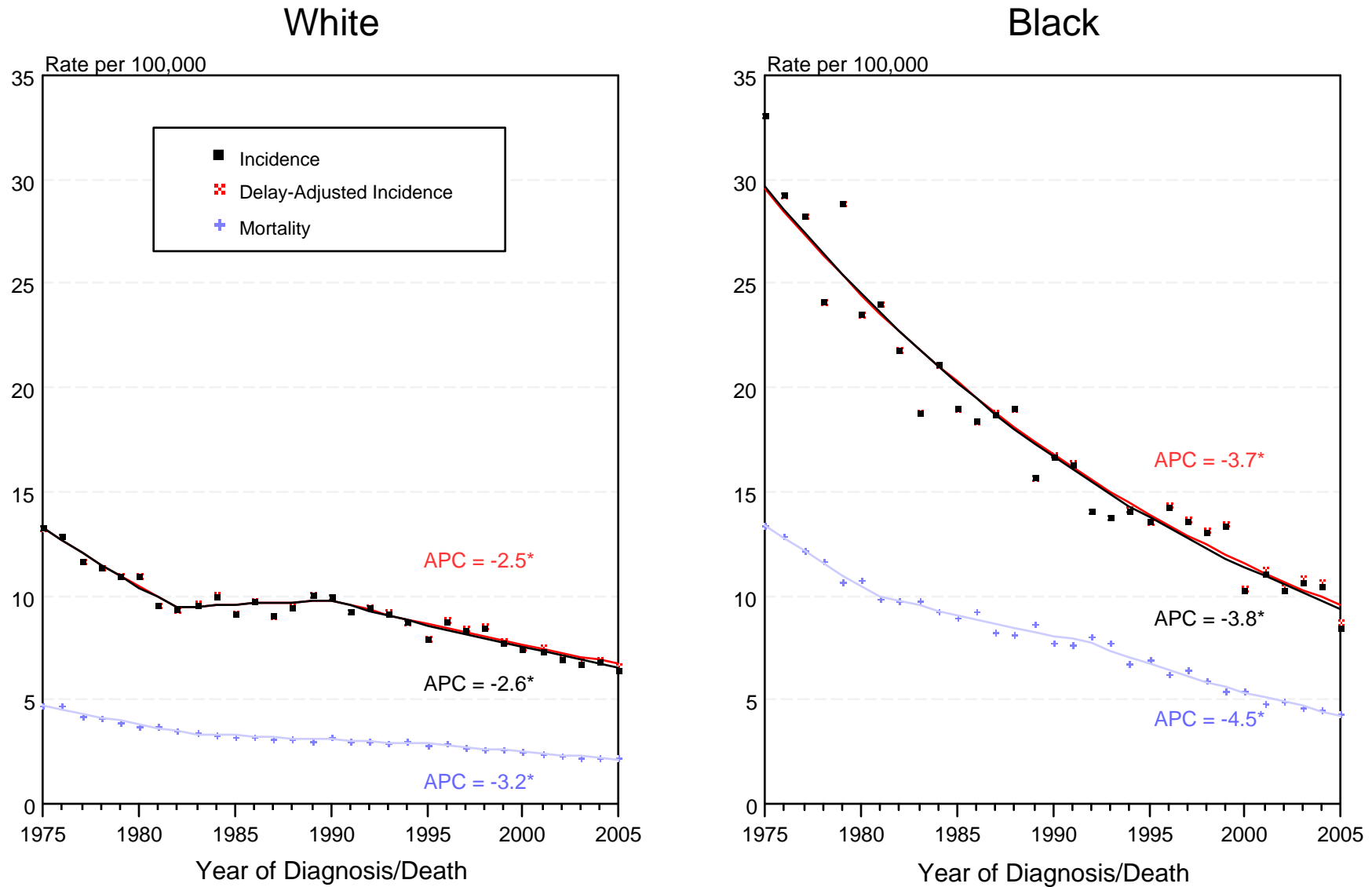


Figure V-1

- ^a Source: SEER 9 areas and US Mortality Files (National Center for Health Statistics, CDC). Rates are age-adjusted to the 2000 US Std Population (19 age groups - Census P25-1103). Regression lines and APCs are calculated using the Joinpoint Regression Program Version 3.3.1, April 2008, National Cancer Institute. The APC is the Annual Percent Change for the regression line segments. The APC shown on the graph is for the most recent trend.
- * The APC is significantly different from zero ($p < 0.05$).

SEER Incidence, Delay Adjusted Incidence and US Death Rates^a Cervix Uteri Cancer, by Age and Race

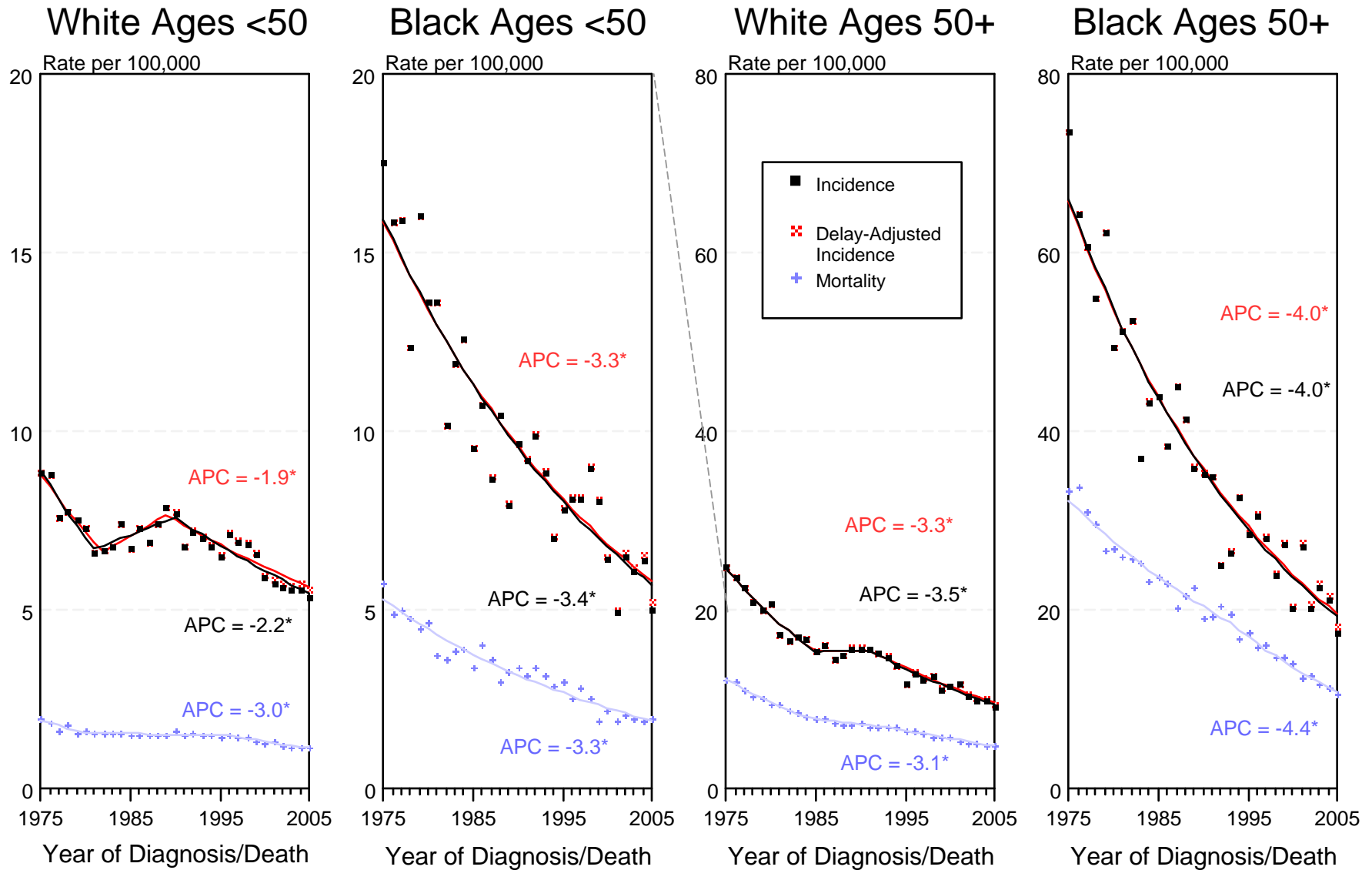


Figure V-2

- ^a Source: SEER 9 areas and US Mortality Files (National Center for Health Statistics, CDC). Rates are age-adjusted to the 2000 US Std Population (19 age groups - Census P25-1103). Regression lines and APCs are calculated using the Joinpoint Regression Program Version 3.3.1, April 2008, National Cancer Institute. The APC is the Annual Percent Change for the regression line segments. The APC shown on the graph is for the most recent trend.
- * The APC is significantly different from zero (p < 0.05).

SEER Incidence and US Death Rates^a Cervix Uteri Cancer

Joinpoint Analyses for Whites and Blacks from 1975-2005
and for Asian/Pacific Islanders, American Indians/Alaska Natives and Hispanics from 1992-2005

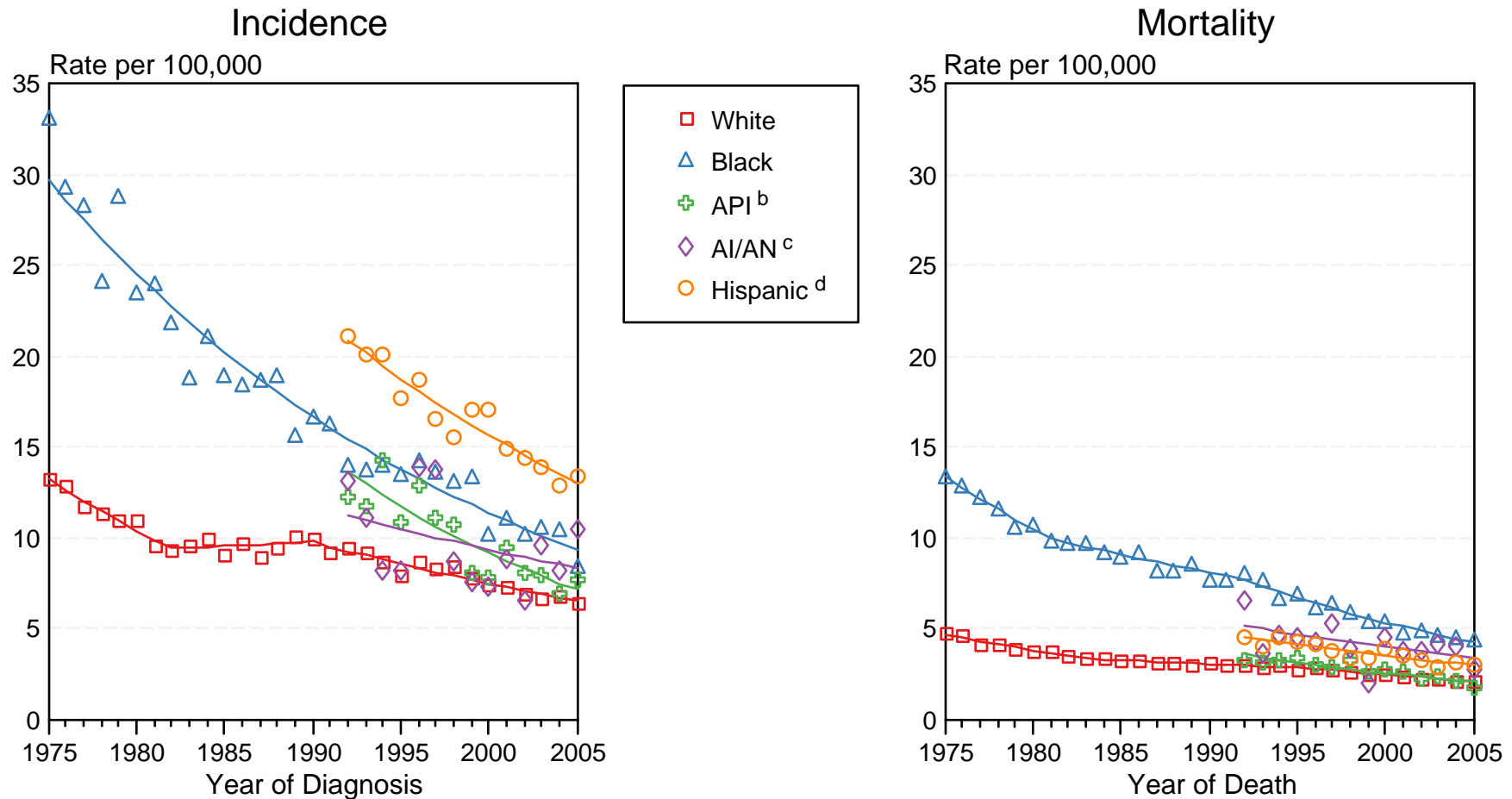


Figure V-3

Source: Incidence data for whites and blacks are from the SEER 9 areas (San Francisco, Connecticut, Detroit, Hawaii, Iowa, New Mexico, Seattle, Utah, Atlanta).

Incidence data for Asian/Pacific Islanders, American Indians/Alaska Natives and Hispanics are from the SEER 13 Areas (SEER 9 Areas, San Jose-Monterey, Los Angeles, Alaska Native Registry and Rural Georgia). Mortality data are from US Mortality Files, National Center for Health Statistics, CDC.

^a Rates are age-adjusted to the 2000 US Std Population (19 age groups - Census P25-1103).

Regression lines are calculated using the Joinpoint Regression Program Version 3.3.1, April 2008, National Cancer Institute. Joinpoint analyses for Whites and Blacks during the 1975-2005 period allow a maximum of 4 joinpoints. Analyses for other ethnic groups during the period 1992-2005 allow a maximum of 3 joinpoints.

^b API = Asian/Pacific Islander.

^c AI/AN = American Indian/Alaska Native. Rates for American Indian/Alaska Native are based on the CHSDA(Contract Health Service Delivery Area) counties.

^d Hispanic is not mutually exclusive from whites, blacks, Asian/Pacific Islanders, and American Indians/Alaska Natives. Incidence data for Hispanics are based on NHIA and exclude cases from the Alaska Native Registry. Mortality data for Hispanics exclude cases from Connecticut, Maine, Maryland, Minnesota, New Hampshire, New York, North Dakota, Oklahoma, and Vermont.