

Table II-1
ALL CANCER SITES (Invasive)

TRENDS IN SEER INCIDENCE^a AND U.S. MORTALITY^b USING THE JOINPOINT REGRESSION PROGRAM, 1975-2005
WITH UP TO THREE JOINPOINTS BY RACE AND SEX

		Joinpoint Trend 1		Joinpoint Trend 2		Joinpoint Trend 3		Joinpoint Trend 4		AAPC ^c	
		Years	APC	Years	APC	Years	APC	Years	APC	1996-2005	2001-2005
<u>SEER Cancer Incidence^a</u>											
All Races	Both Sexes	1975-1992	1.4*	1992-1995	-1.3	1995-2001	0.3	2001-2005	-1.7*	-0.6	-1.7*
All Races	Male	1975-1989	1.3*	1989-1992	5.0*	1992-1995	-4.0	1995-2005	-0.6*	-0.6*	-0.6*
All Races	Female	1975-1979	-0.3	1979-1986	1.6*	1986-1999	0.4*	1999-2005	-0.7*	-0.4*	-0.7*
White	Both Sexes	1975-1992	1.5*	1992-1995	-1.5	1995-2001	0.5	2001-2005	-1.7*	-0.5	-1.7*
White	Male	1975-1989	1.4*	1989-1992	4.8*	1992-1995	-4.2	1995-2005	-0.5*	-0.5*	-0.5*
White	Female	1975-1979	-0.1	1979-1987	1.6*	1987-2001	0.4*	2001-2005	-1.2*	-0.3	-1.2*
Black	Both Sexes	1975-1984	1.6*	1984-1989	0.4	1989-1992	4.4	1992-2005	-1.1*	-1.1*	-1.1*
Black	Male	1975-1981	2.8*	1981-1989	0.6	1989-1992	7.0*	1992-2005	-1.9*	-1.9*	-1.9*
Black	Female	1975-1991	1.1*	1991-2005	-0.1					-0.1	-0.1
<u>SEER Delay-Adjusted Incidence^a</u>											
All Races	Both Sexes	1975-1992	1.4*	1992-2005	-0.3*					-0.3*	-0.3*
All Races	Male	1975-1989	1.3*	1989-1992	5.0*	1992-1995	-4.1*	1995-2005	-0.4*	-0.4*	-0.4*
All Races	Female	1975-1979	-0.3	1979-1986	1.6*	1986-1999	0.4*	1999-2005	-0.5	-0.2	-0.5
White	Both Sexes	1975-1992	1.5*	1992-1995	-1.6	1995-1999	1.1	1999-2005	-0.7*	-0.1	-0.7*
White	Male	1975-1989	1.4*	1989-1992	4.9*	1992-1995	-4.3*	1995-2005	-0.2	-0.2	-0.2
White	Female	1975-1979	-0.2	1979-1986	1.7*	1986-1999	0.5*	1999-2005	-0.3	0.0	-0.3
Black	Both Sexes	1975-1984	1.6*	1984-1989	0.4	1989-1992	4.2*	1992-2005	-0.8*	-0.8*	-0.8*
Black	Male	1975-1981	2.8*	1981-1989	0.7	1989-1992	6.8*	1992-2005	-1.7*	-1.7*	-1.7*
Black	Female	1975-1991	1.1*	1991-2005	0.1					0.1	0.1
<u>U.S. Cancer Mortality^b</u>											
All Races	Both Sexes	1975-1990	0.5*	1990-1993	-0.3	1993-2002	-1.1*	2002-2005	-1.8*	-1.3*	-1.6*
All Races	Male	1975-1980	0.9*	1980-1992	0.3*	1992-2001	-1.5*	2001-2005	-2.0*	-1.7*	-2.0*
All Races	Female	1975-1990	0.6*	1990-1994	-0.2	1994-2002	-0.8*	2002-2005	-1.6*	-1.1*	-1.4*
White	Both Sexes	1975-1991	0.4*	1991-2001	-0.9*	2001-2005	-1.6*			-1.2*	-1.6*
White	Male	1975-1980	0.8*	1980-1992	0.2*	1992-2002	-1.4*	2002-2005	-2.0*	-1.6*	-1.8*
White	Female	1975-1991	0.6*	1991-2001	-0.6*	2001-2005	-1.5*			-1.0*	-1.5*
Black	Both Sexes	1975-1983	1.3*	1983-1991	0.7*	1991-1996	-0.9*	1996-2005	-1.9*	-1.9*	-1.9*
Black	Male	1975-1982	1.8*	1982-1990	1.1*	1990-1995	-0.7*	1995-2005	-2.5*	-2.5*	-2.5*
Black	Female	1975-1991	1.0*	1991-1997	-0.4	1997-2005	-1.3*			-1.2*	-1.3*

Joinpoint Regression Program Version 3.3.1, April 2008, National Cancer Institute. (<http://srab.cancer.gov/joinpoint/>).
The APC is the Annual Percent Change based on rates age-adjusted to the 2000 US Std Population (19 age groups - Census P25-1130).
Trends are from the SEER 9 areas (San Francisco, Connecticut, Detroit, Hawaii, Iowa, New Mexico, Seattle, Utah, and Atlanta).
Trends are from US Mortality Files, National Center for Health Statistics, Centers for Disease Control and Prevention.
The AAPC is the Average Annual Percent Change and is based on the APCs calculated by Joinpoint over the time range of 1975-2005.
The APC/AAPC is significantly different from zero (p<.05).

a
b
c
*

Table II-1a
ALL CANCER SITES (Invasive)

TRENDS IN SEER INCIDENCE^a AND U.S. MORTALITY^b USING THE JOINTPOINT REGRESSION PROGRAM, 1975-2005
 WITH UP TO FOUR JOINTPOINTS BY RACE AND SEX

		Jointpoint Trend 1		Jointpoint Trend 2		Jointpoint Trend 3		Jointpoint Trend 4		Jointpoint Trend 5		AAPC ^c
		Years	APC	Years	APC	Years	APC	Years	APC	Years	APC	2001-2005
<u>SEER Cancer Incidence^a</u>												
All Races	Both Sexes	1975-1989	1.2*	1989-1992	2.8	1992-1995	-2.2	1995-2001	0.4	2001-2005	-1.7*	-1.7*
All Races	Male	1975-1989	1.3*	1989-1992	5.1*	1992-1995	-4.8*	1995-2001	0.3	2001-2005	-2.2*	-2.2*
All Races	Female	1975-1979	-0.3	1979-1987	1.6*	1987-1995	0.1	1995-1998	1.5	1998-2005	-0.8*	-0.8*
White	Both Sexes	1975-1982	0.9*	1982-1992	1.8*	1992-1995	-1.9	1995-2001	0.6	2001-2005	-1.7*	-1.7*
White	Male	1975-1989	1.4*	1989-1992	5.0*	1992-1995	-5.1*	1995-2001	0.5	2001-2005	-2.2*	-2.2*
White	Female	1975-1979	-0.2	1979-1987	1.7*	1987-1995	0.1	1995-1998	1.8	1998-2005	-0.8*	-0.8*
Black	Both Sexes	1975-1984	1.6*	1984-1989	0.4	1989-1992	4.4	1992-2005	-1.1*			-1.1*
Black	Male	1975-1981	2.8*	1981-1989	0.6	1989-1992	6.6*	1992-2003	-1.7*	2003-2005	-4.4	-3.1*
Black	Female	1975-1991	1.1*	1991-2005	-0.1							-0.1
<u>SEER Delay-Adjusted Incidence^a</u>												
All Races	Both Sexes	1975-1989	1.2*	1989-1992	2.8*	1992-1995	-2.4	1995-1999	0.9	1999-2005	-0.8*	-0.8*
All Races	Male	1975-1989	1.3*	1989-1992	5.2*	1992-1995	-4.8*	1995-2001	0.3	2001-2005	-1.8*	-1.8*
All Races	Female	1975-1979	-0.3	1979-1987	1.6*	1987-1995	0.1	1995-1998	1.4	1998-2005	-0.6*	-0.6*
White	Both Sexes	1975-1982	0.8*	1982-1992	1.8*	1992-1995	-2.1	1995-1999	1.2	1999-2005	-0.7*	-0.7*
White	Male	1975-1989	1.4*	1989-1992	5.0*	1992-1995	-5.0*	1995-2001	0.6*	2001-2005	-1.6*	-1.6*
White	Female	1975-1979	-0.2	1979-1987	1.7*	1987-1995	0.1	1995-1998	1.8	1998-2005	-0.5*	-0.5*
Black	Both Sexes	1975-1989	1.2*	1989-1992	3.6	1992-2005	-0.8*					-0.8*
Black	Male	1975-1981	2.8*	1981-1989	0.7	1989-1992	6.8*	1992-2005	-1.7*			-1.7*
Black	Female	1975-1991	1.1*	1991-2005	0.1							0.1
<u>U.S. Cancer Mortality^b</u>												
All Races	Both Sexes	1975-1990	0.5*	1990-1993	-0.3	1993-2002	-1.1*	2002-2005	-1.8*			-1.6*
All Races	Male	1975-1979	1.0*	1979-1990	0.3*	1990-1993	-0.5	1993-2001	-1.5*	2001-2005	-2.0*	-2.0*
All Races	Female	1975-1990	0.6*	1990-1994	-0.2	1994-2002	-0.8*	2002-2005	-1.6*			-1.4*
White	Both Sexes	1975-1990	0.4*	1990-1993	-0.3	1993-2002	-1.0*	2002-2005	-1.7*			-1.5*
White	Male	1975-1980	0.8*	1980-1992	0.2*	1992-2002	-1.4*	2002-2005	-2.0*			-1.8*
White	Female	1975-1990	0.6*	1990-1994	-0.2	1994-2002	-0.8*	2002-2005	-1.6*			-1.4*
Black	Both Sexes	1975-1983	1.3*	1983-1991	0.7*	1991-1996	-0.9*	1996-2005	-1.9*			-1.9*
Black	Male	1975-1982	1.8*	1982-1990	1.0*	1990-1993	-0.2	1993-2000	-2.0*	2000-2005	-2.8*	-2.8*
Black	Female	1975-1991	1.0*	1991-1997	-0.4	1997-2005	-1.3*					-1.3*

Jointpoint Regression Program Version 3.3.1, April 2008, National Cancer Institute. (<http://srab.cancer.gov/jointpoint/>).

The APC is the Annual Percent Change based on rates age-adjusted to the 2000 US Std Population (19 age groups - Census P25-1130).

Trends are from the SEER 9 areas (San Francisco, Connecticut, Detroit, Hawaii, Iowa, New Mexico, Seattle, Utah, and Atlanta).

Trends are from US Mortality Files, National Center for Health Statistics, Centers for Disease Control and Prevention.

The AAPC is the Average Annual Percent Change and is based on the APCs calculated by Jointpoint over the time range of 1975-2005.

The APC/AAPC is significantly different from zero ($p < .05$).

a
b
c
*

Table II-2
ALL CANCER SITES (Invasive)

AGE ADJUSTED SEER INCIDENCE^a RATES BY YEAR, RACE AND SEX

	<u>All Races</u>			<u>Whites</u>			<u>Blacks</u>		
	<u>Total</u>	<u>Males</u>	<u>Females</u>	<u>Total</u>	<u>Males</u>	<u>Females</u>	<u>Total</u>	<u>Males</u>	<u>Females</u>
<u>AGE-ADJUSTED RATES</u>									
<u>YEAR OF DIAGNOSIS:</u>									
1975	400.4	466.8	365.9	402.2	468.7	369.6	426.3	525.1	356.6
1976	407.4	481.1	367.4	409.7	481.8	373.2	427.4	553.0	340.4
1977	407.7	486.5	363.7	409.3	487.2	367.8	442.6	577.6	352.0
1978	407.3	488.4	362.1	409.8	489.9	367.9	436.3	570.4	343.9
1979	412.5	496.5	365.4	414.1	497.6	369.6	451.4	589.8	358.9
1980	417.9	505.7	368.0	419.4	505.2	373.3	467.2	614.8	366.3
1981	425.2	510.8	377.0	427.7	510.9	383.8	472.4	633.6	362.6
1982	424.4	511.0	376.1	427.7	512.4	383.4	465.2	621.9	359.5
1983	431.1	519.9	380.7	434.4	520.9	388.0	486.7	645.6	381.7
1984	439.9	525.4	392.3	443.5	527.5	399.4	487.8	643.9	385.5
1985	448.7	531.1	403.1	453.3	533.3	411.4	488.2	642.6	387.5
1986	451.2	538.1	402.1	455.8	542.8	408.9	493.5	643.4	396.3
1987	467.9	563.0	413.1	474.8	568.6	423.3	500.8	665.9	393.9
1988	463.7	558.2	409.0	470.0	564.8	417.6	503.7	657.3	404.2
1989	467.5	566.8	408.0	474.8	573.3	418.2	492.2	660.5	384.4
1990	481.6	592.3	415.2	488.4	598.7	424.5	520.5	698.4	407.5
1991	502.6	637.1	418.4	509.9	643.9	428.0	548.7	764.2	412.4
1992	510.2	657.5	414.6	516.3	662.4	423.4	567.8	807.7	412.5
1993	492.9	621.4	407.9	496.5	619.5	416.8	567.3	816.5	403.5
1994	482.8	588.8	412.9	486.7	586.6	422.5	556.0	780.3	407.9
1995	475.9	570.3	414.1	481.1	568.8	425.2	540.0	743.7	403.8
1996	478.0	571.0	417.1	483.5	572.1	427.2	537.8	723.4	414.7
1997	485.0	573.7	427.3	492.0	574.4	439.9	536.1	732.4	408.1
1998	486.5	570.5	432.5	494.9	573.8	445.6	530.5	714.7	411.9
1999	488.7	578.6	428.9	496.4	580.0	441.9	535.8	715.9	417.5
2000	483.4	576.1	420.0	493.4	579.4	435.7	521.9	704.6	399.6
2001	485.7	575.2	423.8	496.5	580.9	439.1	512.3	686.3	394.4
2002	481.9	566.7	423.5	491.5	572.3	436.4	525.1	685.3	417.1
2003	467.8	549.9	411.2	477.6	553.8	425.7	507.2	662.6	402.4
2004	466.2	544.4	412.0	475.7	549.4	425.0	503.9	651.7	405.3
2005	455.5	525.9	406.9	466.0	532.4	420.7	480.2	600.2	399.5
1975-2005	461.0	552.5	403.7	466.3	554.7	412.8	505.4	674.5	393.4

^a SEER 9 areas (San Francisco, Connecticut, Detroit, Hawaii, Iowa, New Mexico, Seattle, Utah, and Atlanta). Rates are per 100,000 and are age-adjusted to the 2000 US Std Population (19 age groups - Census P25-1130).
 - Statistic not shown. Rate based on less than 16 cases for the time interval.

Table II-3
ALL CANCER SITES (Invasive)

AGE-ADJUSTED U.S. DEATH^a RATES BY YEAR, RACE AND SEX

	<u>All Races</u>			<u>Whites</u>			<u>Blacks</u>		
	<u>Total</u>	<u>Males</u>	<u>Females</u>	<u>Total</u>	<u>Males</u>	<u>Females</u>	<u>Total</u>	<u>Males</u>	<u>Females</u>
<u>AGE-ADJUSTED RATES</u>									
<u>YEAR OF DEATH:</u>									
1975	199.1	258.4	160.0	196.3	254.0	159.0	235.5	320.5	174.2
1976	202.3	262.2	162.7	199.4	257.5	161.7	241.8	328.4	179.1
1977	203.0	264.2	162.9	199.7	258.8	161.6	246.4	337.9	181.6
1978	204.4	267.1	163.8	201.1	261.6	162.5	247.2	340.9	181.5
1979	204.5	268.7	163.1	201.2	263.2	161.7	249.0	344.7	182.7
1980	207.0	271.1	165.8	203.3	265.0	164.2	256.2	353.9	189.2
1981	206.4	269.8	165.9	202.6	263.3	164.6	256.8	358.6	187.5
1982	208.3	272.9	167.4	204.5	266.3	166.1	260.4	364.9	190.2
1983	209.2	274.1	168.3	205.2	267.2	166.7	263.8	369.3	193.2
1984	210.9	275.1	170.5	206.7	267.6	169.0	268.1	377.9	195.7
1985	211.3	275.7	171.0	207.3	268.2	169.6	268.1	377.8	196.3
1986	211.8	276.0	171.6	207.7	268.8	170.0	269.4	378.9	199.1
1987	211.9	276.3	171.5	207.8	269.0	169.9	271.1	383.2	199.9
1988	212.6	276.9	172.5	208.5	269.5	170.9	271.6	384.2	200.4
1989	214.3	278.5	174.3	210.0	270.2	172.9	275.9	395.3	200.9
1990	214.9	279.8	174.7	210.4	271.5	172.9	279.3	399.1	205.4
1991	215.1	279.1	175.3	210.6	271.2	173.4	279.0	395.9	207.4
1992	213.5	276.5	174.4	209.2	268.9	172.6	274.9	389.2	205.8
1993	213.4	275.9	174.6	209.2	267.9	172.8	277.1	394.8	206.3
1994	211.7	272.1	174.1	207.8	264.7	172.6	272.0	385.2	204.1
1995	209.9	268.5	173.4	206.1	261.5	171.7	269.5	379.0	204.5
1996	207.0	263.7	171.2	203.4	256.8	169.8	265.3	373.7	200.9
1997	203.6	258.1	169.0	199.9	251.6	167.3	262.1	363.2	202.5
1998	200.8	253.6	166.9	197.6	247.6	165.4	255.7	353.1	198.4
1999	200.7	252.8	167.2	197.8	247.1	165.9	253.8	349.2	197.5
2000	198.7	248.2	166.6	196.3	243.1	165.9	248.0	340.9	193.2
2001	195.9	244.1	164.3	193.6	239.4	163.4	244.0	332.3	191.9
2002	193.7	240.2	162.8	191.7	236.3	162.0	240.2	322.9	191.0
2003	190.0	234.1	160.4	188.2	230.6	159.7	234.4	311.3	188.1
2004	185.8	228.5	157.0	184.2	225.1	156.5	228.3	303.9	182.9
2005	184.0	226.1	155.3	182.7	223.2	154.9	224.1	296.7	180.2
1975-2005	204.7	262.1	167.7	201.4	256.2	166.4	257.0	356.3	194.4

^a US Mortality Files, National Center for Health Statistics, Centers for Disease Control and Prevention. Rates are per 100,000 and are age-adjusted to the 2000 US Std Population (19 age groups - Census P25-1130).
 - Statistic not shown. Rate based on less than 16 cases for the time interval.

Table II-4
ALL CANCER SITES (Invasive)

SEER INCIDENCE^a AND U.S. DEATH^b RATES, AGE-ADJUSTED AND AGE-SPECIFIC RATES, BY RACE AND SEX

	All Races			Whites			Blacks		
	Total	Males	Females	Total	Males	Females	Total	Males	Females
<u>SEER INCIDENCE</u>									
<u>AGE AT DIAGNOSIS</u>									
AGE-ADJUSTED RATES, 2001-2005									
All ages	467.4	549.3	411.0	475.3	551.4	423.6	500.6	651.5	398.9
Under 65	222.6	219.2	227.2	226.0	219.3	233.9	249.1	286.6	219.4
65 and over	2,159.3	2,831.3	1,681.9	2,198.7	2,847.2	1,734.9	2,239.3	3,173.4	1,639.5
All ages(IARC world std) ^c	316.4	359.6	284.6	322.1	361.0	293.8	344.2	440.0	275.5
AGE-SPECIFIC RATES, 2001-2005									
<1	23.7	24.7	22.6	24.9	26.3	23.4	17.4	16.5	18.3
1-4	20.9	22.7	18.9	21.9	23.7	20.0	14.7	16.0	13.3
5-9	11.2	12.0	10.4	11.9	12.9	10.8	8.8	8.8	8.8
10-14	13.1	13.5	12.7	13.8	14.2	13.4	10.6	10.9	10.2
15-19	21.3	22.7	19.7	23.0	24.7	21.2	13.6	14.1	13.1
20-24	33.8	32.3	35.4	36.7	35.5	37.9	22.2	19.2	25.2
25-29	52.9	45.1	61.1	56.8	48.7	65.6	39.4	32.4	45.8
30-34	81.5	60.8	102.9	85.8	64.9	108.2	68.6	47.9	87.5
35-39	125.4	88.1	163.4	128.9	91.3	168.2	117.3	83.6	148.0
40-44	208.1	146.3	269.7	211.9	148.4	276.8	207.8	162.1	249.1
45-49	343.1	272.5	412.0	344.8	270.3	419.3	380.6	356.3	402.0
50-54	551.4	529.3	572.4	553.9	521.7	585.5	658.4	751.3	579.5
55-59	867.9	947.4	793.1	872.3	932.8	814.1	1,060.2	1,387.0	789.1
60-64	1,281.9	1,525.8	1,059.2	1,302.3	1,523.3	1,096.3	1,511.9	2,063.2	1,071.7
65-69	1,765.1	2,236.4	1,357.6	1,802.4	2,242.1	1,414.1	1,977.9	2,818.6	1,337.0
70-74	2,140.4	2,797.7	1,614.2	2,188.8	2,819.6	1,673.0	2,260.0	3,232.4	1,579.9
75-79	2,422.4	3,196.8	1,871.2	2,468.6	3,210.5	1,935.2	2,464.3	3,517.4	1,812.3
80-84	2,484.0	3,276.5	1,988.2	2,516.5	3,286.4	2,035.2	2,419.6	3,405.8	1,880.4
85+	2,236.9	3,065.9	1,855.2	2,258.8	3,102.6	1,876.1	2,174.9	2,970.0	1,851.6
<u>U.S. MORTALITY</u>									
<u>AGE AT DEATH</u>									
AGE-ADJUSTED RATES, 2001-2005									
All ages	189.8	234.4	159.9	188.0	230.7	159.2	234.0	313.0	186.7
Under 65	62.3	66.9	58.0	60.4	64.4	56.6	87.8	101.1	77.2
65 and over	1,070.8	1,391.6	864.1	1,070.0	1,380.2	868.4	1,244.2	1,777.6	943.3
All ages(IARC world std) ^c	113.7	135.4	97.7	112.2	132.6	97.0	145.0	186.4	117.8
AGE-SPECIFIC RATES, 2001-2005									
<1	1.8	1.8	1.8	1.9	2.0	1.9	1.3	1.1	1.4
1-4	2.5	2.7	2.3	2.6	2.8	2.4	2.4	2.6	2.2
5-9	2.6	2.8	2.4	2.6	2.8	2.5	2.5	2.7	2.2
10-14	2.5	2.7	2.3	2.5	2.6	2.3	2.6	3.0	2.3
15-19	3.5	4.1	2.8	3.6	4.3	2.9	3.4	3.9	2.9
20-24	4.8	5.5	4.0	4.8	5.5	4.0	5.1	5.9	4.3
25-29	6.8	7.0	6.6	6.6	7.0	6.3	8.8	8.2	9.3
30-34	11.9	10.8	13.0	11.5	10.7	12.4	15.8	13.4	18.0
35-39	22.7	19.1	26.3	22.0	18.8	25.2	30.4	23.2	36.9
40-44	46.2	41.4	50.9	44.2	39.8	48.6	66.0	58.2	72.9
45-49	89.2	88.3	90.1	84.6	83.5	85.7	134.1	137.5	131.2
50-54	158.8	169.4	148.6	151.7	160.2	143.4	237.7	273.3	207.5
55-59	268.6	298.3	240.7	260.8	286.2	236.4	388.5	473.2	318.9
60-64	438.3	506.2	376.7	431.6	492.5	375.3	584.5	747.0	457.5
65-69	648.4	776.4	537.5	644.0	764.2	537.9	814.6	1,062.0	631.0
70-74	912.0	1,126.0	740.3	911.0	1,113.8	744.9	1,087.1	1,482.0	820.6
75-79	1,186.3	1,523.0	946.3	1,186.6	1,509.7	952.9	1,374.6	1,958.2	1,026.4
80-84	1,445.2	1,933.1	1,147.1	1,445.4	1,919.3	1,153.3	1,638.3	2,453.2	1,212.8
85+	1,697.8	2,443.3	1,370.2	1,701.8	2,441.3	1,376.6	1,834.6	2,872.5	1,430.1

^a SEER 17 areas. Rates are per 100,000 and are age-adjusted to the 2000 US Std Population (19 age groups - Census P25-1130), unless noted.
^b US Mortality Files, National Center for Health Statistics, Centers for Disease Control and Prevention. Rates are per 100,000 and are age-adjusted to the 2000 US Std Population (19 age groups - Census P25-1130), unless noted.
^c Rates are per 100,000 and are age-adjusted to the IARC world standard population.
- Statistic not shown. Rate based on less than 16 cases for the time interval.

Table II-5
ALL CANCER SITES (Invasive)

	All Races			Whites			Blacks		
	Total	Males	Females	Total	Males	Females	Total	Males	Females
<u>5-YR RELATIVE SURVIVAL RATES</u>									
YEAR OF DIAGNOSIS:									
1960-1963 ^a	-	-	-	39	-	-	27	-	-
1970-1973 ^a	-	-	-	43	-	-	31	-	-
1975-1977 ^b	50.1	42.3	57.1	51.0	43.3	57.8	39.8	32.7	47.2
1978-1980 ^b	50.4	44.0	56.4	51.4	45.3	57.1	39.6	33.3	46.6
1981-1983 ^b	51.6	46.1	56.7	52.8	47.6	57.6	39.6	34.2	45.6
1984-1986 ^b	53.5	47.7	58.9	54.7	49.1	59.9	40.8	35.5	46.4
1987-1989 ^b	56.4	51.6	61.0	57.8	53.3	62.1	43.7	38.8	48.9
1990-1992 ^b	60.9	59.5	62.3	62.4	61.3	63.5	48.2	47.3	49.3
1993-1995 ^b	62.2	61.1	63.4	63.4	62.4	64.5	52.9	53.6	51.9
1996-2004 ^b	66.3 ^e	66.0 ^e	66.6 ^e	67.5 ^e	67.2 ^e	67.7 ^e	57.5 ^e	59.8 ^e	54.9 ^e
<u>5-YR PERIOD SURVIVAL RATES^{cd}</u>									
YEAR OF DIAGNOSIS:									
1996-2004	66.2	66.4	66.0	67.0	67.1	66.9	58.1	60.7	55.2
<u>5-YR RELATIVE SURVIVAL RATES, 1996-2004^c</u>									
AGE AT DIAGNOSIS:									
<45	77.6	71.9	81.4	79.6	74.4	83.1	63.3	54.8	68.7
45-54	70.5	63.8	75.8	72.3	65.6	77.5	58.0	54.8	61.2
55-64	67.5	67.3	67.8	68.7	68.3	69.2	59.4	63.0	53.8
65-74	63.4	66.8	58.8	64.1	67.2	60.0	56.7	63.8	46.4
75+	53.2	57.4	49.4	53.9	57.7	50.5	44.3	51.0	38.3
Under 65	71.0	67.3	74.4	72.4	68.8	75.8	59.9	59.0	60.9
65 and over	59.1	63.2	54.3	59.7	63.6	55.4	52.1	59.7	42.9

^a Rates are based on End Results data from a series of hospital registries and one population-based registry.

^b Rates are from the SEER 9 areas (San Francisco, Connecticut, Detroit, Hawaii, Iowa, New Mexico, Seattle, Utah, Atlanta).

Rates are based on follow-up of patients into 2005.

^c Rates are from the SEER 17 areas (San Francisco, Connecticut, Detroit, Hawaii, Iowa, New Mexico, Seattle, Utah, Atlanta, San Jose-Monterey, Los Angeles, Alaska Native Registry, Rural Georgia, California excluding SF/SJM/LA, Kentucky, Louisiana and New Jersey). California excluding SF/SJM/LA, Kentucky, Louisiana, and New Jersey contribute cases for diagnosis years 2000-2004. The remaining 13 SEER Areas contribute cases for the entire period 1996-2004. Rates are based on follow-up of patients into 2005.

^d Period survival provides a more up-to-date estimate of survival by piecing together the most recent conditional survival estimates from several cohorts. It is computed here using three calendar year blocks (2002-2004: 0-1 year survival), (2001-2003: 1-2 year survival), (2000-2002: 2-3 year survival), (1999-2001: 3-4 year survival), (1998-2000: 4-5 years survival).

^e The difference in rates between 1975-1977 and 1996-2004 is statistically significant ($p < .05$).

^f The standard error of the survival rate is between 5 and 10 percentage points.

^g The standard error of the survival rate is greater than 10 percentage points.

- Statistic could not be calculated due to fewer than 16 cases during the time period.

Table II-6
ALL CANCER SITES (Invasive)

SURVIVAL RATES^a

By Year of Diagnosis

All Races, Males and Females

Year of Diagnosis

	1975- 1979	1980- 1984	1985	1986	1987	1988	1989	1990	1991	1992	1993	1994	1995	1996	1997	1998	1999	2000	2001	2002	2003	2004
Relative Survival Rates (SEER ^b)																						
1-year	70.0	71.7	73.1	73.6	74.2	74.3	74.8	75.8	77.3	78.0	77.4	77.2	77.2	77.6	78.3	78.6	79.2	79.6	80.1	80.2	80.0	80.5
2-year	60.4	62.1	63.8	64.3	65.4	65.5	66.3	67.4	69.3	70.6	70.2	69.8	69.9	70.7	71.4	71.9	72.8	73.3	74.0	74.4	74.0	
3-year	55.5	57.2	59.0	59.6	60.7	61.2	61.8	63.2	65.3	66.9	66.4	66.1	66.3	67.3	68.0	68.7	69.6	70.2	71.0	71.6		
4-year	52.4	53.9	55.8	56.6	57.9	58.4	59.0	60.5	62.9	64.6	64.0	63.6	64.0	65.1	65.9	66.6	67.7	68.3	69.2			
5-year	50.2	51.5	53.6	54.5	55.8	56.4	57.0	58.8	61.0	62.6	62.2	62.0	62.5	63.5	64.4	65.1	66.4	67.2				
6-year	48.5	49.7	52.0	52.9	54.1	54.8	55.4	57.2	59.4	61.2	60.9	60.7	61.3	62.4	63.2	64.1	65.4					
7-year	47.2	48.2	50.6	51.6	52.7	53.4	54.1	55.8	58.0	59.8	59.6	59.6	60.3	61.6	62.5	63.4						
8-year	46.2	47.1	49.6	50.6	51.7	52.3	52.9	54.6	56.8	58.8	58.7	58.8	59.6	60.9	61.9							
9-year	45.3	46.1	48.6	49.7	50.6	51.3	52.1	53.6	56.0	58.0	57.8	58.1	59.0	60.4								
10-year	44.5	45.4	47.8	48.9	49.9	50.5	51.2	52.8	55.2	57.2	57.1	57.5	58.5									
11-year	43.8	44.7	47.2	48.2	49.1	49.8	50.6	52.0	54.5	56.5	56.4	56.8										
12-year	43.2	44.2	46.5	47.6	48.4	49.1	49.9	51.5	53.9	55.9	56.0											
13-year	42.9	43.7	46.1	47.0	47.7	48.4	49.4	51.0	53.4	55.4												
14-year	42.5	43.3	45.5	46.5	47.3	48.0	49.0	50.5	53.0													
15-year	42.2	43.0	45.1	46.0	47.0	47.6	48.6	50.2														
16-year	42.0	42.6	44.7	45.6	46.7	47.4	48.4															
17-year	41.8	42.3	44.3	45.6	46.6	47.1																
18-year	41.7	42.1	44.2	45.5	46.5																	
19-year	41.7	41.9	44.1	45.4																		
20-year	41.6	41.8	44.1																			

^a Survival rates are relative rates expressed as percents.

^b Rates are from the SEER 9 areas (San Francisco, Connecticut, Detroit, Hawaii, Iowa, New Mexico, Seattle, Utah, and Atlanta).

Table II-7
ALL CANCER SITES (Invasive)

SURVIVAL RATES^a

By Year of Diagnosis

All Races, Males

Year of Diagnosis

	1975- 1979	1980- 1984	1985	1986	1987	1988	1989	1990	1991	1992	1993	1994	1995	1996	1997	1998	1999	2000	2001	2002	2003	2004
Relative Survival Rates (SEER ^b)																						
1-year	64.6	67.6	69.1	69.8	71.0	71.2	72.0	73.8	76.4	77.7	76.8	76.3	76.0	76.7	77.4	77.3	78.5	79.1	79.6	79.7	79.5	80.1
2-year	53.9	57.2	58.9	59.4	61.3	61.5	62.9	64.7	68.2	70.2	69.5	68.5	68.4	69.6	70.5	70.6	71.9	72.9	73.5	73.9	73.4	
3-year	48.6	52.0	53.7	54.4	56.2	56.7	58.1	60.4	64.4	66.9	65.9	64.8	64.9	66.3	67.3	67.4	68.8	69.9	70.9	71.4		
4-year	45.2	48.5	50.2	51.0	53.1	53.5	54.9	57.6	61.8	64.6	63.5	62.3	62.6	64.1	65.2	65.4	67.1	68.2	69.3			
5-year	42.8	45.9	47.8	48.9	50.9	51.3	52.7	55.7	59.8	62.6	61.6	60.7	61.1	62.7	63.7	64.1	65.9	67.1				
6-year	41.0	43.9	46.1	47.0	49.1	49.5	51.0	54.0	57.9	61.0	60.3	59.3	59.8	61.6	62.5	63.1	65.1					
7-year	39.5	42.3	44.5	45.6	47.4	47.8	49.4	52.1	56.3	59.5	59.0	58.2	58.9	60.7	61.9	62.4						
8-year	38.2	41.0	43.4	44.5	46.1	46.4	47.9	50.7	54.8	58.0	58.0	57.1	58.1	60.1	61.3							
9-year	37.1	39.9	42.3	43.3	44.9	45.2	46.6	49.5	53.8	57.0	56.9	56.3	57.4	59.6								
10-year	36.0	39.0	41.5	42.3	43.7	44.1	45.5	48.4	52.8	55.9	56.0	55.7	56.8									
11-year	35.1	38.3	40.6	41.4	42.7	43.2	44.6	47.3	51.8	55.0	55.2	55.0										
12-year	34.4	37.6	39.6	40.5	41.8	42.2	43.7	46.6	51.0	54.3	54.5											
13-year	33.8	37.1	39.0	39.7	41.0	41.2	42.8	45.9	50.3	53.6												
14-year	33.4	36.5	38.1	39.0	40.4	40.6	42.1	45.3	49.7													
15-year	32.9	36.1	37.5	38.2	39.9	39.9	41.3	44.8														
16-year	32.5	35.4	37.0	37.8	39.5	39.2	40.8															
17-year	32.2	35.0	36.5	37.8	39.2	38.6																
18-year	31.9	34.7	36.3	37.6	38.7																	
19-year	31.8	34.5	36.1	37.2																		
20-year	31.6	34.3	36.0																			

^a Survival rates are relative rates expressed as percents.

^b Rates are from the SEER 9 areas (San Francisco, Connecticut, Detroit, Hawaii, Iowa, New Mexico, Seattle, Utah, and Atlanta).

Table II-8
ALL CANCER SITES (Invasive)

SURVIVAL RATES^a

By Year of Diagnosis

All Races, Females

Year of Diagnosis

	1975- 1979	1980- 1984	1985	1986	1987	1988	1989	1990	1991	1992	1993	1994	1995	1996	1997	1998	1999	2000	2001	2002	2003	2004
Relative Survival Rates (SEER ^b)																						
1-year	75.4	75.8	77.1	77.4	77.6	77.5	77.7	77.9	78.4	78.4	78.2	78.1	78.6	78.5	79.2	79.9	80.0	80.1	80.5	80.9	80.6	80.8
2-year	66.7	67.1	68.7	69.1	69.6	69.7	69.8	70.3	70.6	71.0	70.9	71.2	71.5	71.8	72.3	73.3	73.7	73.7	74.6	75.0	74.5	
3-year	62.1	62.3	64.1	64.7	65.2	65.7	65.7	66.1	66.4	67.1	67.0	67.5	67.9	68.3	68.8	69.9	70.4	70.5	71.1	71.7		
4-year	59.0	59.2	61.1	62.0	62.6	63.3	63.1	63.6	64.1	64.5	64.5	65.0	65.5	66.1	66.6	67.8	68.4	68.5	69.2			
5-year	56.9	56.9	59.0	59.8	60.5	61.4	61.2	62.0	62.3	62.7	62.8	63.3	64.0	64.4	65.0	66.1	66.8	67.3				
6-year	55.2	55.1	57.4	58.4	58.9	59.9	59.8	60.5	60.9	61.4	61.5	62.1	62.8	63.2	63.9	65.1	65.7					
7-year	53.9	53.7	56.1	57.1	57.6	58.7	58.7	59.4	59.9	60.3	60.4	61.0	61.8	62.5	63.1	64.3						
8-year	52.9	52.5	55.1	56.2	56.8	57.8	57.7	58.5	58.9	59.6	59.4	60.5	61.1	61.7	62.5							
9-year	52.1	51.6	54.1	55.4	55.9	57.0	57.2	57.6	58.2	59.1	58.8	59.9	60.5	61.1								
10-year	51.4	50.8	53.3	54.6	55.4	56.4	56.6	57.0	57.7	58.6	58.3	59.3	60.2									
11-year	50.7	50.1	52.7	54.1	54.7	55.7	56.1	56.4	57.4	58.0	57.8	58.7										
12-year	50.1	49.6	52.3	53.6	54.2	55.2	55.6	56.0	56.8	57.6	57.5											
13-year	49.8	49.2	51.9	53.2	53.5	54.7	55.3	55.6	56.5	57.4												
14-year	49.4	48.8	51.6	52.8	53.2	54.4	55.0	55.2	56.2													
15-year	49.0	48.5	51.2	52.3	52.8	54.1	54.8	55.0														
16-year	48.8	48.1	50.8	51.9	52.6	54.1	54.8															
17-year	48.6	47.8	50.4	51.8	52.5	54.1																
18-year	48.5	47.6	50.2	51.7	52.5																	
19-year	48.3	47.3	50.2	51.7																		
20-year	48.1	47.2	50.2																			

^a Survival rates are relative rates expressed as percents.

^b Rates are from the SEER 9 areas (San Francisco, Connecticut, Detroit, Hawaii, Iowa, New Mexico, Seattle, Utah, and Atlanta).

Table II-9
ALL CANCER SITES (Invasive)

Risk of Being Diagnosed With Cancer in 10, 20 and 30 Years, Lifetime Risk of Being Diagnosed with Cancer, and
 Lifetime Risk of Dying from Cancer Given Cancer Free At Current Age
 Both Sexes, 2003-2005 By Race/Ethnicity

Race/ Ethnicity	Current Age	Risk of Being Diagnosed with Cancer			Risk of Dying from Cancer	
		+10 yrs Percent (95% C.I.)	+20 yrs Percent (95% C.I.)	+30 yrs Percent (95% C.I.)	Eventually Percent (95% C.I.)	Eventually Percent (95% C.I.)
All Races	0	0.16 (0.16, 0.17)	0.33 (0.33, 0.34)	0.76 (0.75, 0.77)	40.35 (40.26, 40.45)	21.21 (21.18, 21.24)
	10	0.17 (0.17, 0.18)	0.60 (0.60, 0.61)	1.60 (1.59, 1.61)	40.74 (40.64, 40.84)	21.48 (21.45, 21.51)
	20	0.43 (0.43, 0.44)	1.43 (1.42, 1.45)	3.96 (3.95, 3.98)	40.79 (40.70, 40.89)	21.55 (21.52, 21.58)
	30	1.02 (1.01, 1.02)	3.58 (3.56, 3.60)	9.53 (9.50, 9.56)	40.89 (40.79, 40.99)	21.69 (21.66, 21.72)
	40	2.62 (2.60, 2.63)	8.70 (8.67, 8.73)	19.67 (19.62, 19.73)	40.73 (40.63, 40.83)	21.81 (21.78, 21.84)
	50	6.38 (6.36, 6.41)	17.91 (17.85, 17.96)	30.65 (30.56, 30.73)	40.02 (39.91, 40.12)	21.77 (21.74, 21.81)
	60	12.84 (12.79, 12.90)	27.05 (26.96, 27.13)	35.46 (35.36, 35.56)	37.49 (37.38, 37.60)	21.00 (20.97, 21.04)
	70	17.93 (17.85, 18.00)	28.55 (28.44, 28.65)	- (- , -)	31.11 (31.00, 31.22)	18.55 (18.51, 18.58)
80	16.89 (16.79, 16.99)	- (- , -)	- (- , -)	20.97 (20.85, 21.09)	13.93 (13.89, 13.96)	
White	0	0.17 (0.16, 0.18)	0.35 (0.35, 0.36)	0.81 (0.80, 0.82)	40.89 (40.79, 40.99)	21.38 (21.35, 21.41)
	10	0.18 (0.18, 0.19)	0.65 (0.64, 0.66)	1.68 (1.67, 1.70)	41.21 (41.11, 41.32)	21.61 (21.57, 21.64)
	20	0.46 (0.46, 0.47)	1.50 (1.49, 1.52)	4.06 (4.04, 4.08)	41.25 (41.15, 41.36)	21.67 (21.63, 21.70)
	30	1.05 (1.04, 1.06)	3.64 (3.62, 3.66)	9.62 (9.59, 9.66)	41.31 (41.21, 41.42)	21.80 (21.77, 21.83)
	40	2.64 (2.63, 2.66)	8.75 (8.72, 8.79)	19.91 (19.85, 19.98)	41.11 (41.00, 41.22)	21.90 (21.87, 21.93)
	50	6.41 (6.38, 6.44)	18.11 (18.05, 18.18)	31.06 (30.97, 31.15)	40.35 (40.23, 40.46)	21.85 (21.82, 21.88)
	60	13.02 (12.96, 13.07)	27.41 (27.32, 27.51)	35.80 (35.69, 35.91)	37.74 (37.62, 37.86)	21.06 (21.03, 21.10)
	70	18.16 (18.07, 18.24)	28.73 (28.62, 28.84)	- (- , -)	31.18 (31.05, 31.30)	18.56 (18.53, 18.60)
80	16.88 (16.78, 16.98)	- (- , -)	- (- , -)	20.79 (20.66, 20.92)	13.86 (13.82, 13.90)	
Black	0	0.13 (0.12, 0.14)	0.25 (0.24, 0.27)	0.55 (0.53, 0.57)	36.19 (35.91, 36.48)	21.18 (21.09, 21.27)
	10	0.13 (0.12, 0.14)	0.44 (0.42, 0.46)	1.32 (1.29, 1.35)	36.98 (36.69, 37.27)	21.69 (21.60, 21.78)
	20	0.31 (0.30, 0.33)	1.20 (1.17, 1.23)	3.83 (3.77, 3.89)	37.11 (36.82, 37.41)	21.78 (21.69, 21.88)
	30	0.91 (0.88, 0.93)	3.59 (3.53, 3.64)	10.38 (10.27, 10.48)	37.52 (37.22, 37.82)	22.05 (21.95, 22.14)
	40	2.76 (2.72, 2.81)	9.77 (9.66, 9.87)	21.01 (20.83, 21.20)	37.76 (37.45, 38.07)	22.32 (22.23, 22.42)
	50	7.52 (7.43, 7.62)	19.60 (19.41, 19.79)	30.55 (30.29, 30.82)	37.58 (37.26, 37.91)	22.45 (22.35, 22.55)
	60	14.26 (14.08, 14.44)	27.19 (26.91, 27.48)	33.80 (33.46, 34.13)	35.50 (35.14, 35.85)	21.79 (21.69, 21.90)
	70	17.84 (17.57, 18.10)	26.95 (26.58, 27.31)	- (- , -)	29.29 (28.89, 29.69)	19.46 (19.34, 19.58)
80	16.19 (15.83, 16.56)	- (- , -)	- (- , -)	20.36 (19.89, 20.83)	15.27 (15.13, 15.41)	

Devcan Version 7.0.0, April 2008, National Cancer Institute (<http://srab.cancer.gov/devcan/>).

Source: Incidence data are from the SEER 17 areas (San Francisco, Connecticut, Detroit, Hawaii, Iowa, New Mexico, Seattle, Utah, Atlanta, San Jose-Monterey, Los Angeles, Alaska Native Registry, Rural Georgia, California excluding SF/SJM/LA, Kentucky, Louisiana and New Jersey). Mortality data are from the NCHS public use data file for the total US.

- Statistic could not be calculated.

A percent or confidence interval value of 0.00 represents a value that is below 0.005.

Table II-9 - continued
ALL CANCER SITES (Invasive)

Risk of Being Diagnosed With Cancer in 10, 20 and 30 Years, Lifetime Risk of Being Diagnosed with Cancer, and
 Lifetime Risk of Dying from Cancer Given Cancer Free At Current Age
 Both Sexes, 2003-2005 By Race/Ethnicity

Race/ Ethnicity	Current Age	Risk of Being Diagnosed with Cancer				Risk of Dying from Cancer	
		+10 yrs Percent (95% C.I.)	+20 yrs Percent (95% C.I.)	+30 yrs Percent (95% C.I.)	Eventually Percent (95% C.I.)	Eventually Percent (95% C.I.)	
Asian/ Pacific Islander	0	0.14 (0.12, 0.15)	0.26 (0.24, 0.28)	0.54 (0.51, 0.56)	35.22 (34.82, 35.62)	18.31 (18.03, 18.59)	
	10	0.13 (0.12, 0.14)	0.41 (0.39, 0.43)	1.16 (1.12, 1.19)	35.43 (35.03, 35.84)	18.44 (18.17, 18.73)	
	20	0.28 (0.27, 0.30)	1.03 (1.00, 1.06)	3.01 (2.96, 3.07)	35.43 (35.03, 35.84)	18.46 (18.19, 18.75)	
	30	0.76 (0.73, 0.78)	2.75 (2.70, 2.80)	6.86 (6.77, 6.95)	35.40 (34.99, 35.81)	18.50 (18.22, 18.78)	
	40	2.02 (1.98, 2.06)	6.18 (6.09, 6.26)	13.75 (13.59, 13.91)	35.05 (34.64, 35.47)	18.46 (18.18, 18.75)	
	50	4.28 (4.21, 4.35)	12.08 (11.92, 12.23)	22.44 (22.20, 22.69)	34.01 (33.59, 34.44)	18.23 (17.94, 18.52)	
	60	8.31 (8.18, 8.45)	19.37 (19.12, 19.61)	28.05 (27.71, 28.39)	31.70 (31.27, 32.15)	17.53 (17.24, 17.83)	
	70	12.69 (12.48, 12.90)	22.66 (22.32, 23.00)	- (- , -)	26.86 (26.39, 27.34)	15.92 (15.62, 16.24)	
	80	13.36 (13.04, 13.68)	- (- , -)	- (- , -)	18.97 (18.44, 19.53)	12.79 (12.44, 13.15)	
American Indian/ Alaska Native ^a	0	0.13 (0.09, 0.19)	0.24 (0.19, 0.30)	0.49 (0.42, 0.58)	27.27 (26.11, 28.54)	16.63 (16.12, 17.17)	
	10	0.10 (0.08, 0.14)	0.37 (0.31, 0.43)	1.09 (0.98, 1.21)	27.68 (26.50, 28.98)	16.94 (16.41, 17.49)	
	20	0.26 (0.21, 0.32)	0.99 (0.88, 1.11)	2.67 (2.49, 2.86)	27.82 (26.63, 29.12)	17.06 (16.53, 17.62)	
	30	0.74 (0.65, 0.84)	2.45 (2.28, 2.63)	6.39 (6.07, 6.72)	28.06 (26.85, 29.39)	17.33 (16.80, 17.90)	
	40	1.77 (1.63, 1.91)	5.83 (5.52, 6.16)	13.11 (12.53, 13.71)	28.21 (26.97, 29.57)	17.69 (17.13, 18.27)	
	50	4.30 (4.02, 4.58)	11.99 (11.40, 12.59)	20.92 (20.01, 21.87)	27.93 (26.63, 29.36)	17.97 (17.39, 18.58)	
	60	8.53 (8.00, 9.08)	18.43 (17.49, 19.41)	24.62 (23.39, 25.91)	26.21 (24.82, 27.75)	17.68 (17.05, 18.34)	
	70	12.21 (11.35, 13.12)	19.84 (18.54, 21.21)	- (- , -)	21.79 (20.27, 23.51)	16.01 (15.31, 16.75)	
	80	11.38 (10.13, 12.74)	- (- , -)	- (- , -)	14.29 (12.59, 16.31)	12.41 (11.55, 13.34)	
Hispanic ^b	0	0.16 (0.15, 0.17)	0.32 (0.31, 0.33)	0.65 (0.63, 0.67)	37.19 (36.83, 37.55)	17.31 (17.16, 17.47)	
	10	0.16 (0.15, 0.17)	0.49 (0.48, 0.51)	1.25 (1.23, 1.27)	37.48 (37.12, 37.85)	17.49 (17.34, 17.65)	
	20	0.33 (0.32, 0.35)	1.10 (1.08, 1.12)	3.01 (2.98, 3.05)	37.52 (37.16, 37.89)	17.53 (17.38, 17.69)	
	30	0.77 (0.76, 0.79)	2.71 (2.67, 2.75)	7.24 (7.16, 7.31)	37.60 (37.23, 37.97)	17.63 (17.47, 17.79)	
	40	1.97 (1.94, 2.00)	6.57 (6.50, 6.65)	15.55 (15.40, 15.70)	37.43 (37.07, 37.81)	17.68 (17.52, 17.84)	
	50	4.78 (4.72, 4.85)	14.10 (13.95, 14.25)	25.71 (25.48, 25.95)	36.83 (36.45, 37.22)	17.61 (17.45, 17.78)	
	60	10.15 (10.01, 10.28)	22.79 (22.55, 23.03)	31.53 (31.21, 31.86)	34.88 (34.48, 35.30)	17.07 (16.90, 17.24)	
	70	15.24 (15.02, 15.46)	25.78 (25.44, 26.13)	- (- , -)	29.82 (29.37, 30.29)	15.49 (15.31, 15.68)	
	80	15.44 (15.09, 15.79)	- (- , -)	- (- , -)	21.36 (20.81, 21.92)	12.37 (12.16, 12.59)	

Devcan Version 7.0.0, April 2008, National Cancer Institute (<http://srab.cancer.gov/devcan/>).

Source: Incidence data are from the SEER 17 areas (San Francisco, Connecticut, Detroit, Hawaii, Iowa, New Mexico, Seattle, Utah, Atlanta, San Jose-Monterey, Los Angeles, Alaska Native Registry, Rural Georgia, California excluding SF/SJM/LA, Kentucky, Louisiana and New Jersey). Mortality data are from the NCHS public use data file for the total US.

^a Underlying incidence and mortality data for American Indian/Alaska Native are based on the CHSDA (Contract Health Service Delivery Area) counties.

^b Hispanic is not mutually exclusive from whites, blacks, Asian/Pacific Islanders, and American Indians/Alaska Natives. Underlying incidence data for Hispanics are based on NHIA and exclude cases from the Alaska Native Registry and Kentucky. Underlying mortality data for Hispanics exclude deaths from Minnesota, New Hampshire and North Dakota.

- Statistic could not be calculated.

A percent or confidence interval value of 0.00 represents a value that is below 0.005.

Table II-9 - continued
ALL CANCER SITES (Invasive)

Risk of Being Diagnosed With Cancer in 10, 20 and 30 Years, Lifetime Risk of Being Diagnosed with Cancer, and
 Lifetime Risk of Dying from Cancer Given Cancer Free At Current Age
 Males, 2003-2005 By Race/Ethnicity

Race/ Ethnicity	Current Age	Risk of Being Diagnosed with Cancer				Risk of Dying from Cancer	
		+10 yrs Percent (95% C.I.)	+20 yrs Percent (95% C.I.)	+30 yrs Percent (95% C.I.)	Eventually Percent (95% C.I.)	Eventually Percent (95% C.I.)	
All Races	0	0.18 (0.17, 0.18)	0.35 (0.34, 0.36)	0.72 (0.71, 0.73)	43.89 (43.74, 44.03)	23.24 (23.20, 23.29)	
	10	0.18 (0.17, 0.18)	0.55 (0.54, 0.56)	1.27 (1.25, 1.28)	44.37 (44.22, 44.52)	23.58 (23.53, 23.62)	
	20	0.38 (0.37, 0.39)	1.10 (1.08, 1.11)	3.07 (3.05, 3.10)	44.50 (44.36, 44.65)	23.68 (23.64, 23.73)	
	30	0.73 (0.72, 0.74)	2.74 (2.72, 2.76)	8.98 (8.94, 9.03)	44.86 (44.71, 45.01)	23.94 (23.90, 23.99)	
	40	2.06 (2.04, 2.07)	8.44 (8.40, 8.49)	21.60 (21.51, 21.68)	45.14 (44.98, 45.29)	24.21 (24.17, 24.26)	
	50	6.72 (6.68, 6.76)	20.56 (20.47, 20.64)	35.71 (35.58, 35.84)	45.33 (45.17, 45.49)	24.47 (24.42, 24.52)	
	60	15.71 (15.63, 15.80)	32.92 (32.78, 33.05)	41.94 (41.77, 42.10)	43.84 (43.67, 44.02)	24.08 (24.03, 24.13)	
	70	23.08 (22.95, 23.21)	35.18 (35.00, 35.36)	- (- , -)	37.74 (37.54, 37.94)	21.94 (21.89, 22.00)	
80	21.98 (21.79, 22.17)	- (- , -)	- (- , -)	26.63 (26.39, 26.87)	17.47 (17.40, 17.54)		
White	0	0.18 (0.18, 0.19)	0.37 (0.36, 0.38)	0.78 (0.76, 0.79)	43.98 (43.82, 44.14)	23.35 (23.30, 23.40)	
	10	0.19 (0.18, 0.20)	0.60 (0.59, 0.61)	1.35 (1.33, 1.37)	44.37 (44.21, 44.53)	23.63 (23.58, 23.68)	
	20	0.41 (0.40, 0.42)	1.17 (1.15, 1.18)	3.15 (3.12, 3.17)	44.49 (44.33, 44.65)	23.73 (23.68, 23.78)	
	30	0.77 (0.75, 0.78)	2.78 (2.75, 2.80)	8.94 (8.89, 8.99)	44.78 (44.61, 44.94)	23.97 (23.92, 24.02)	
	40	2.06 (2.04, 2.08)	8.36 (8.31, 8.41)	21.53 (21.44, 21.62)	44.99 (44.82, 45.16)	24.21 (24.16, 24.26)	
	50	6.62 (6.58, 6.67)	20.46 (20.36, 20.56)	35.66 (35.52, 35.81)	45.11 (44.94, 45.28)	24.43 (24.38, 24.48)	
	60	15.64 (15.55, 15.73)	32.83 (32.68, 32.98)	41.71 (41.53, 41.89)	43.51 (43.32, 43.70)	24.01 (23.95, 24.06)	
	70	22.95 (22.80, 23.09)	34.80 (34.60, 34.99)	- (- , -)	37.20 (36.99, 37.41)	21.82 (21.76, 21.88)	
80	21.49 (21.29, 21.69)	- (- , -)	- (- , -)	25.86 (25.61, 26.11)	17.27 (17.20, 17.34)		
Black	0	0.13 (0.12, 0.15)	0.26 (0.24, 0.28)	0.50 (0.48, 0.53)	40.47 (40.03, 40.92)	23.54 (23.40, 23.68)	
	10	0.13 (0.12, 0.14)	0.38 (0.36, 0.41)	1.00 (0.96, 1.04)	41.46 (41.01, 41.93)	24.18 (24.04, 24.32)	
	20	0.26 (0.24, 0.28)	0.88 (0.84, 0.92)	3.22 (3.14, 3.29)	41.76 (41.30, 42.22)	24.34 (24.20, 24.49)	
	30	0.64 (0.61, 0.67)	3.04 (2.97, 3.11)	11.31 (11.14, 11.47)	42.65 (42.18, 43.13)	24.83 (24.69, 24.98)	
	40	2.49 (2.43, 2.56)	11.07 (10.90, 11.23)	25.59 (25.29, 25.90)	43.59 (43.10, 44.08)	25.41 (25.26, 25.56)	
	50	9.31 (9.15, 9.46)	25.07 (24.76, 25.39)	38.02 (37.58, 38.46)	44.60 (44.09, 45.13)	26.05 (25.89, 26.21)	
	60	19.59 (19.27, 19.91)	35.68 (35.18, 36.17)	42.41 (41.84, 42.99)	43.85 (43.25, 44.47)	26.12 (25.94, 26.30)	
	70	25.05 (24.53, 25.58)	35.54 (34.85, 36.24)	- (- , -)	37.79 (37.03, 38.55)	24.47 (24.26, 24.68)	
80	22.81 (22.00, 23.65)	- (- , -)	- (- , -)	27.70 (26.67, 28.76)	20.84 (20.56, 21.12)		

Devcan Version 7.0.0, April 2008, National Cancer Institute (<http://srab.cancer.gov/devcan/>).

Source: Incidence data are from the SEER 17 areas (San Francisco, Connecticut, Detroit, Hawaii, Iowa, New Mexico, Seattle, Utah, Atlanta, San Jose-Monterey, Los Angeles, Alaska Native Registry, Rural Georgia, California excluding SF/SJM/LA, Kentucky, Louisiana and New Jersey). Mortality data are from the NCHS public use data file for the total US.

- Statistic could not be calculated.

A percent or confidence interval value of 0.00 represents a value that is below 0.005.

Table II-9 - continued
ALL CANCER SITES (Invasive)

Risk of Being Diagnosed With Cancer in 10, 20 and 30 Years, Lifetime Risk of Being Diagnosed with Cancer, and
 Lifetime Risk of Dying from Cancer Given Cancer Free At Current Age
 Males, 2003-2005 By Race/Ethnicity

Race/ Ethnicity	Current Age	Risk of Being Diagnosed with Cancer				Risk of Dying from Cancer	
		+10 yrs Percent (95% C.I.)	+20 yrs Percent (95% C.I.)	+30 yrs Percent (95% C.I.)	Eventually Percent (95% C.I.)	Eventually Percent (95% C.I.)	
Asian/ Pacific Islander	0	0.15 (0.13, 0.17)	0.28 (0.26, 0.31)	0.50 (0.47, 0.54)	38.90 (38.29, 39.52)	20.76 (20.35, 21.18)	
	10	0.13 (0.12, 0.15)	0.35 (0.33, 0.38)	0.81 (0.77, 0.85)	39.17 (38.55, 39.80)	20.93 (20.52, 21.36)	
	20	0.22 (0.20, 0.24)	0.68 (0.65, 0.72)	1.96 (1.90, 2.02)	39.21 (38.59, 39.84)	20.97 (20.55, 21.39)	
	30	0.46 (0.44, 0.49)	1.75 (1.69, 1.81)	5.53 (5.41, 5.65)	39.30 (38.68, 39.94)	21.03 (20.62, 21.46)	
	40	1.30 (1.25, 1.35)	5.12 (5.00, 5.24)	14.15 (13.91, 14.40)	39.26 (38.63, 39.90)	21.05 (20.63, 21.48)	
	50	3.92 (3.82, 4.02)	13.19 (12.95, 13.43)	26.39 (26.00, 26.79)	38.95 (38.31, 39.61)	20.93 (20.51, 21.37)	
	60	9.93 (9.71, 10.15)	24.07 (23.67, 24.48)	34.02 (33.47, 34.58)	37.53 (36.85, 38.22)	20.42 (19.98, 20.87)	
	70	16.82 (16.45, 17.20)	28.66 (28.08, 29.24)	- (- , -)	32.83 (32.08, 33.60)	18.89 (18.43, 19.38)	
	80	17.37 (16.79, 17.95)	- (- , -)	- (- , -)	23.49 (22.59, 24.43)	15.45 (14.89, 16.03)	
American Indian/ Alaska Native ^a	0	0.13 (0.08, 0.21)	0.23 (0.17, 0.33)	0.46 (0.36, 0.58)	27.19 (25.53, 29.14)	17.60 (16.82, 18.45)	
	10	0.11 (0.07, 0.16)	0.34 (0.26, 0.43)	0.92 (0.77, 1.08)	27.68 (25.98, 29.67)	17.96 (17.17, 18.84)	
	20	0.23 (0.17, 0.31)	0.82 (0.68, 0.98)	1.99 (1.77, 2.23)	27.88 (26.16, 29.89)	18.14 (17.33, 19.02)	
	30	0.60 (0.49, 0.74)	1.80 (1.60, 2.03)	5.67 (5.24, 6.12)	28.33 (26.57, 30.38)	18.57 (17.74, 19.48)	
	40	1.25 (1.09, 1.43)	5.26 (4.84, 5.71)	13.55 (12.69, 14.46)	28.83 (27.01, 30.96)	19.18 (18.31, 20.11)	
	50	4.27 (3.88, 4.69)	13.09 (12.20, 14.02)	22.29 (20.92, 23.72)	29.34 (27.42, 31.59)	19.83 (18.92, 20.83)	
	60	9.95 (9.11, 10.84)	20.34 (18.90, 21.86)	26.89 (25.00, 28.92)	28.30 (26.21, 30.77)	20.01 (19.01, 21.11)	
	70	13.25 (11.93, 14.68)	21.61 (19.56, 23.85)	- (- , -)	23.41 (21.07, 26.26)	18.71 (17.54, 20.01)	
	80	13.34 (11.19, 15.81)	- (- , -)	- (- , -)	16.20 (13.43, 19.91)	15.73 (14.17, 17.50)	
Hispanic ^b	0	0.17 (0.16, 0.18)	0.34 (0.32, 0.36)	0.63 (0.61, 0.66)	41.19 (40.63, 41.78)	19.75 (19.50, 20.01)	
	10	0.17 (0.16, 0.18)	0.47 (0.45, 0.49)	0.97 (0.94, 1.00)	41.57 (41.00, 42.16)	19.98 (19.73, 20.24)	
	20	0.30 (0.29, 0.32)	0.81 (0.78, 0.83)	2.16 (2.12, 2.20)	41.70 (41.12, 42.30)	20.06 (19.80, 20.32)	
	30	0.51 (0.49, 0.53)	1.88 (1.84, 1.93)	6.34 (6.24, 6.44)	41.99 (41.41, 42.60)	20.25 (19.99, 20.51)	
	40	1.40 (1.36, 1.43)	5.93 (5.83, 6.03)	16.89 (16.67, 17.12)	42.22 (41.62, 42.83)	20.42 (20.16, 20.69)	
	50	4.71 (4.62, 4.81)	16.12 (15.89, 16.35)	30.57 (30.19, 30.96)	42.47 (41.85, 43.10)	20.60 (20.33, 20.87)	
	60	12.58 (12.37, 12.81)	28.53 (28.13, 28.93)	38.29 (37.75, 38.83)	41.66 (40.99, 42.35)	20.38 (20.10, 20.68)	
	70	20.26 (19.87, 20.65)	32.64 (32.05, 33.25)	- (- , -)	36.92 (36.14, 37.74)	19.03 (18.71, 19.36)	
	80	20.37 (19.71, 21.04)	- (- , -)	- (- , -)	27.41 (26.34, 28.53)	15.94 (15.54, 16.36)	

Devcan Version 7.0.0, April 2008, National Cancer Institute (<http://srab.cancer.gov/devcan/>).

Source: Incidence data are from the SEER 17 areas (San Francisco, Connecticut, Detroit, Hawaii, Iowa, New Mexico, Seattle, Utah, Atlanta, San Jose-Monterey, Los Angeles, Alaska Native Registry, Rural Georgia, California excluding SF/SJM/LA, Kentucky, Louisiana and New Jersey). Mortality data are from the NCHS public use data file for the total US.

^a Underlying incidence and mortality data for American Indian/Alaska Native are based on the CHSDA (Contract Health Service Delivery Area) counties.

^b Hispanic is not mutually exclusive from whites, blacks, Asian/Pacific Islanders, and American Indians/Alaska Natives. Underlying incidence data for Hispanics are based on NHIA and exclude cases from the Alaska Native Registry and Kentucky. Underlying mortality data for Hispanics exclude deaths from Minnesota, New Hampshire and North Dakota.

- Statistic could not be calculated.

A percent or confidence interval value of 0.00 represents a value that is below 0.005.

Table II-9 - continued
ALL CANCER SITES (Invasive)

Risk of Being Diagnosed With Cancer in 10, 20 and 30 Years, Lifetime Risk of Being Diagnosed with Cancer, and
 Lifetime Risk of Dying from Cancer Given Cancer Free At Current Age
 Females, 2003-2005 By Race/Ethnicity

Race/ Ethnicity	Current Age	Risk of Being Diagnosed with Cancer				Risk of Dying from Cancer	
		+10 yrs Percent (95% C.I.)	+20 yrs Percent (95% C.I.)	+30 yrs Percent (95% C.I.)	Eventually Percent (95% C.I.)	Eventually Percent (95% C.I.)	
All Races	0	0.15 (0.14, 0.16)	0.32 (0.31, 0.32)	0.80 (0.78, 0.81)	37.35 (37.23, 37.48)	19.65 (19.61, 19.69)	
	10	0.17 (0.16, 0.17)	0.66 (0.64, 0.67)	1.95 (1.93, 1.97)	37.66 (37.54, 37.79)	19.87 (19.83, 19.91)	
	20	0.49 (0.48, 0.50)	1.79 (1.77, 1.80)	4.88 (4.85, 4.91)	37.64 (37.52, 37.77)	19.90 (19.86, 19.94)	
	30	1.31 (1.29, 1.32)	4.43 (4.40, 4.46)	10.10 (10.05, 10.15)	37.50 (37.38, 37.63)	19.95 (19.91, 19.99)	
	40	3.18 (3.16, 3.21)	8.97 (8.92, 9.01)	17.88 (17.80, 17.95)	36.92 (36.80, 37.05)	19.94 (19.90, 19.98)	
	50	6.06 (6.02, 6.10)	15.40 (15.32, 15.47)	26.04 (25.93, 26.14)	35.35 (35.22, 35.48)	19.67 (19.63, 19.71)	
	60	10.23 (10.16, 10.29)	21.88 (21.78, 21.98)	29.88 (29.76, 30.01)	32.08 (31.95, 32.22)	18.65 (18.61, 18.69)	
	70	13.95 (13.87, 14.04)	23.53 (23.41, 23.65)	- (- , -)	26.17 (26.03, 26.30)	16.15 (16.11, 16.19)	
80	13.86 (13.76, 13.97)	- (- , -)	- (- , -)	17.68 (17.54, 17.81)	11.89 (11.85, 11.93)		
White	0	0.15 (0.15, 0.16)	0.33 (0.32, 0.34)	0.85 (0.83, 0.86)	38.30 (38.17, 38.44)	19.87 (19.83, 19.91)	
	10	0.18 (0.17, 0.19)	0.70 (0.68, 0.71)	2.04 (2.01, 2.06)	38.57 (38.43, 38.71)	20.06 (20.01, 20.10)	
	20	0.52 (0.51, 0.53)	1.87 (1.84, 1.89)	5.02 (4.98, 5.06)	38.54 (38.40, 38.68)	20.08 (20.04, 20.13)	
	30	1.36 (1.34, 1.37)	4.54 (4.51, 4.57)	10.35 (10.29, 10.40)	38.38 (38.24, 38.52)	20.13 (20.08, 20.17)	
	40	3.25 (3.22, 3.27)	9.17 (9.12, 9.22)	18.39 (18.31, 18.48)	37.76 (37.62, 37.90)	20.11 (20.07, 20.15)	
	50	6.20 (6.16, 6.24)	15.86 (15.78, 15.94)	26.82 (26.70, 26.94)	36.14 (36.00, 36.28)	19.83 (19.79, 19.88)	
	60	10.57 (10.50, 10.64)	22.56 (22.45, 22.68)	30.64 (30.50, 30.78)	32.76 (32.62, 32.91)	18.80 (18.76, 18.85)	
	70	14.38 (14.29, 14.48)	24.07 (23.93, 24.20)	- (- , -)	26.61 (26.46, 26.76)	16.24 (16.20, 16.29)	
80	14.09 (13.97, 14.21)	- (- , -)	- (- , -)	17.79 (17.65, 17.94)	11.88 (11.83, 11.92)		
Black	0	0.12 (0.11, 0.14)	0.24 (0.22, 0.27)	0.60 (0.57, 0.63)	32.33 (31.97, 32.70)	19.30 (19.18, 19.42)	
	10	0.13 (0.11, 0.14)	0.49 (0.46, 0.52)	1.63 (1.57, 1.68)	32.94 (32.57, 33.32)	19.71 (19.59, 19.83)	
	20	0.37 (0.34, 0.39)	1.51 (1.46, 1.56)	4.41 (4.32, 4.50)	32.95 (32.58, 33.33)	19.75 (19.62, 19.87)	
	30	1.15 (1.11, 1.20)	4.09 (4.01, 4.17)	9.57 (9.43, 9.71)	32.96 (32.58, 33.34)	19.83 (19.71, 19.96)	
	40	3.01 (2.95, 3.08)	8.63 (8.50, 8.77)	16.94 (16.72, 17.17)	32.63 (32.24, 33.02)	19.88 (19.76, 20.01)	
	50	5.98 (5.86, 6.09)	14.82 (14.60, 15.05)	24.04 (23.72, 24.36)	31.51 (31.11, 31.91)	19.65 (19.52, 19.78)	
	60	10.01 (9.81, 10.21)	20.45 (20.13, 20.77)	26.96 (26.56, 27.36)	28.90 (28.47, 29.33)	18.61 (18.48, 18.75)	
	70	13.16 (12.88, 13.45)	21.37 (20.97, 21.78)	- (- , -)	23.82 (23.37, 24.28)	16.22 (16.08, 16.36)	
80	12.94 (12.56, 13.34)	- (- , -)	- (- , -)	16.80 (16.31, 17.31)	12.45 (12.29, 12.61)		

Devcan Version 7.0.0, April 2008, National Cancer Institute (<http://srab.cancer.gov/devcan/>).

Source: Incidence data are from the SEER 17 areas (San Francisco, Connecticut, Detroit, Hawaii, Iowa, New Mexico, Seattle, Utah, Atlanta, San Jose-Monterey, Los Angeles, Alaska Native Registry, Rural Georgia, California excluding SF/SJM/LA, Kentucky, Louisiana and New Jersey). Mortality data are from the NCHS public use data file for the total US.

- Statistic could not be calculated.

A percent or confidence interval value of 0.00 represents a value that is below 0.005.

Table II-9 - continued
ALL CANCER SITES (Invasive)

Risk of Being Diagnosed With Cancer in 10, 20 and 30 Years, Lifetime Risk of Being Diagnosed with Cancer, and
 Lifetime Risk of Dying from Cancer Given Cancer Free At Current Age
 Females, 2003-2005 By Race/Ethnicity

Race/ Ethnicity	Current Age	Risk of Being Diagnosed with Cancer				Risk of Dying from Cancer	
		+10 yrs Percent (95% C.I.)	+20 yrs Percent (95% C.I.)	+30 yrs Percent (95% C.I.)	Eventually Percent (95% C.I.)	Eventually Percent (95% C.I.)	
Asian/ Pacific Islander	0	0.12 (0.10, 0.14)	0.24 (0.22, 0.27)	0.57 (0.54, 0.61)	32.17 (31.65, 32.71)	16.24 (15.87, 16.61)	
	10	0.12 (0.11, 0.14)	0.46 (0.43, 0.49)	1.48 (1.43, 1.53)	32.35 (31.82, 32.89)	16.35 (15.98, 16.73)	
	20	0.34 (0.31, 0.36)	1.36 (1.32, 1.41)	3.99 (3.91, 4.08)	32.31 (31.79, 32.86)	16.36 (15.99, 16.74)	
	30	1.03 (0.99, 1.07)	3.68 (3.60, 3.76)	8.08 (7.94, 8.22)	32.16 (31.63, 32.71)	16.36 (15.99, 16.74)	
	40	2.68 (2.61, 2.75)	7.14 (7.01, 7.27)	13.45 (13.24, 13.67)	31.53 (31.00, 32.09)	16.29 (15.92, 16.67)	
	50	4.60 (4.50, 4.71)	11.13 (10.93, 11.33)	19.21 (18.92, 19.52)	29.81 (29.26, 30.37)	15.96 (15.59, 16.35)	
	60	6.93 (6.76, 7.10)	15.51 (15.22, 15.81)	23.08 (22.67, 23.50)	26.76 (26.20, 27.35)	15.14 (14.77, 15.54)	
	70	9.57 (9.34, 9.81)	18.01 (17.61, 18.42)	- (- , -)	22.12 (21.52, 22.73)	13.55 (13.16, 13.96)	
	80	10.59 (10.23, 10.97)	- (- , -)	- (- , -)	15.74 (15.09, 16.43)	10.79 (10.35, 11.25)	
American Indian/ Alaska Native ^a	0	0.14 (0.08, 0.23)	0.24 (0.17, 0.34)	0.53 (0.42, 0.66)	27.51 (25.89, 29.34)	15.96 (15.27, 16.71)	
	10	0.10 (0.07, 0.15)	0.40 (0.31, 0.50)	1.26 (1.09, 1.45)	27.84 (26.21, 29.70)	16.22 (15.52, 16.98)	
	20	0.30 (0.23, 0.39)	1.16 (1.00, 1.35)	3.34 (3.05, 3.64)	27.92 (26.27, 29.79)	16.30 (15.59, 17.07)	
	30	0.88 (0.74, 1.03)	3.08 (2.80, 3.37)	7.09 (6.62, 7.59)	27.95 (26.28, 29.84)	16.43 (15.71, 17.20)	
	40	2.26 (2.03, 2.49)	6.37 (5.92, 6.85)	12.71 (11.93, 13.53)	27.76 (26.06, 29.69)	16.57 (15.84, 17.36)	
	50	4.32 (3.94, 4.73)	10.97 (10.21, 11.78)	19.68 (18.46, 20.95)	26.77 (25.01, 28.77)	16.55 (15.80, 17.37)	
	60	7.26 (6.59, 7.96)	16.75 (15.52, 18.05)	22.74 (21.13, 24.45)	24.48 (22.64, 26.61)	15.94 (15.15, 16.80)	
	70	11.36 (10.25, 12.55)	18.53 (16.86, 20.33)	- (- , -)	20.61 (18.63, 22.95)	14.15 (13.28, 15.09)	
	80	10.14 (8.65, 11.83)	- (- , -)	- (- , -)	13.09 (10.99, 15.76)	10.45 (9.46, 11.56)	
Hispanic ^b	0	0.15 (0.14, 0.16)	0.30 (0.28, 0.32)	0.67 (0.65, 0.69)	34.16 (33.70, 34.63)	15.52 (15.32, 15.72)	
	10	0.15 (0.14, 0.16)	0.52 (0.50, 0.54)	1.58 (1.54, 1.62)	34.39 (33.92, 34.86)	15.66 (15.46, 15.87)	
	20	0.37 (0.36, 0.39)	1.43 (1.40, 1.47)	3.95 (3.89, 4.02)	34.35 (33.89, 34.83)	15.67 (15.47, 15.88)	
	30	1.07 (1.04, 1.10)	3.60 (3.54, 3.66)	8.23 (8.11, 8.34)	34.21 (33.74, 34.69)	15.68 (15.48, 15.89)	
	40	2.57 (2.52, 2.62)	7.27 (7.16, 7.38)	14.48 (14.29, 14.67)	33.65 (33.18, 34.13)	15.63 (15.42, 15.84)	
	50	4.87 (4.77, 4.96)	12.34 (12.15, 12.53)	21.57 (21.28, 21.86)	32.21 (31.72, 32.71)	15.36 (15.16, 15.57)	
	60	8.03 (7.87, 8.20)	17.96 (17.67, 18.24)	25.94 (25.54, 26.34)	29.40 (28.89, 29.92)	14.61 (14.40, 14.83)	
	70	11.45 (11.21, 11.70)	20.67 (20.27, 21.08)	- (- , -)	24.66 (24.11, 25.22)	13.04 (12.82, 13.27)	
	80	12.44 (12.05, 12.83)	- (- , -)	- (- , -)	17.82 (17.20, 18.47)	10.26 (10.02, 10.52)	

Devcan Version 7.0.0, April 2008, National Cancer Institute (<http://srab.cancer.gov/devcan/>).

Source: Incidence data are from the SEER 17 areas (San Francisco, Connecticut, Detroit, Hawaii, Iowa, New Mexico, Seattle, Utah, Atlanta, San Jose-Monterey, Los Angeles, Alaska Native Registry, Rural Georgia, California excluding SF/SJM/LA, Kentucky, Louisiana and New Jersey). Mortality data are from the NCHS public use data file for the total US.

^a Underlying incidence and mortality data for American Indian/Alaska Native are based on the CHSDA (Contract Health Service Delivery Area) counties.

^b Hispanic is not mutually exclusive from whites, blacks, Asian/Pacific Islanders, and American Indians/Alaska Natives. Underlying incidence data for Hispanics are based on NHIA and exclude cases from the Alaska Native Registry and Kentucky. Underlying mortality data for Hispanics exclude deaths from Minnesota, New Hampshire and North Dakota.

- Statistic could not be calculated.

A percent or confidence interval value of 0.00 represents a value that is below 0.005.

Table II-10
ALL CANCER SITES (Invasive)

SEER INCIDENCE AND U.S. MORTALITY
AGE-ADJUSTED RATES AND TRENDS^a
By Race/Ethnicity and Sex

SEER Incidence	Rate 2001-2005 ^b			Seer 13 Areas ^c Trend 1996-2005 AAPC (%)			SEER 9 Areas ^d Trend 1996-2005 AAPC (%)		
	Rate per 100,000 persons			Total	Males	Females	Total	Males	Females
	Total	Males	Females						
RACE/ETHNICITY									
All Races	467.4	549.3	411.0	-0.7*	-1.0*	-0.5*	-0.6	-0.6*	-0.4*
White	475.3	551.4	423.6	-0.7*	-1.0*	-0.5*	-0.5	-0.5*	-0.3
White Hispanic ^e	363.4	424.8	324.0	-0.6*	-1.2*	-0.2	-	-	-
White Non-Hispanic ^e	492.2	568.3	439.7	-0.5*	-0.8*	-0.3*	-	-	-
Black	500.6	651.5	398.9	-1.0*	-1.8*	-0.1	-1.1*	-1.9*	-0.1
Asian/Pacific Islander	313.5	354.0	287.8	-0.7*	-0.8	0.0	-	-	-
Amer Ind/Alaska Nat ^f	312.7	336.6	296.4	-0.1	-1.1*	0.8*	-	-	-
Hispanic ^e	357.6	419.4	317.8	-0.5*	-1.0*	-0.1	-	-	-
U.S. Mortality ^g									
	Rate 2001-2005			Trend 1996-2005 ^h					
	Rate per 100,000 persons			AAPC (%)					
	Total	Males	Females	Total	Males	Females			
RACE/ETHNICITY									
All Races	189.8	234.4	159.9	-1.3*	-1.6*	-1.1*			
White	188.0	230.7	159.2	-1.2*	-1.5*	-1.0*			
White Hispanic ^e	131.6	164.2	109.2	-1.4*	-1.8*	-1.1*			
White Non-Hispanic ^e	192.2	235.6	163.0	-1.1*	-1.4*	-0.8*			
Black	234.0	313.0	186.7	-1.8*	-2.5*	-1.2*			
Asian/Pacific Islander	113.8	138.8	95.9	-1.7*	-2.0*	-1.2*			
Amer Ind/Alaska Nat									
Total U.S.	128.2	151.5	111.8	-0.9*	-1.6	-0.5*			
CHSDA Counties	161.7	190.0	142.0	0.0	-0.2	0.2			
Non-CHSDA Counties	85.5	103.0	72.9	-2.1*	-3.2	-1.1*			
Hispanic ^e	127.0	159.0	105.2	-1.3*	-1.8*	-1.1*			

The AAPC is the Average Annual Percent Change over the time interval. The AAPCs are calculated by the Joinpoint Regression Program Version 3.3, April 2008, National Cancer Institute.

Statistic not shown. Rate based on less than 16 cases for the time interval. Trend based on less than 10 cases for at least one year within the time interval.

Rates are age-adjusted to the 2000 US Std Population (19 age groups - Census P25-1130). Trends are based on rates age-adjusted to the 2000 US Std Population (19 age groups - Census P25-1130).

Incidence data used in calculating the 2001-2005 rates are from the SEER 17 areas (San Francisco, Connecticut, Detroit, Hawaii, Iowa, New Mexico, Seattle, Utah, Atlanta, San Jose-Monterey, Los Angeles, Alaska Native Registry, Rural Georgia, California excluding SF/SJM/LA, Kentucky, Louisiana and New Jersey).

The SEER 13 areas are San Francisco, Connecticut, Detroit, Hawaii, Iowa, New Mexico, Seattle, Utah, Atlanta, San Jose-Monterey, Los Angeles, Alaska Native Registry and Rural Georgia. The 1996-2005 AAPC trends are based on a Joinpoint analysis using diagnosis years 1992-2005.

The SEER 9 areas are San Francisco, Connecticut, Detroit, Hawaii, Iowa, New Mexico, Seattle, Utah, and Atlanta. The 1996-2005 AAPC trends are based on a Joinpoint analysis using diagnosis years 1975-2005.

Hispanic and Non-Hispanic are not mutually exclusive from whites, blacks, Asian/Pacific Islanders, and American Indians/Alaska Natives. Incidence data for Hispanics and Non-Hispanics are based on NHIA and exclude cases from the Alaska Native Registry and Kentucky. The 2001-2005 Hispanic and Non-Hispanic death rates exclude deaths from Minnesota, New Hampshire and North Dakota. The 1996-2005 Hispanic and Non-Hispanic mortality trends exclude deaths from Connecticut, Maine, Maryland, Minnesota, New Hampshire, New York, North Dakota, Oklahoma and Vermont.

Incidence data for American Indian/Alaska Native are based on the CHSDA(Contract Health Service Delivery Area) counties.

US Mortality Files, National Center for Health Statistics, CDC.

The 1996-2005 mortality AAPCs are based on a Joinpoint analysis using years of death 1992-2005.

The APC is significantly different from zero (p<.05).

Table II-11
ALL CANCER SITES (Invasive)

AGE-ADJUSTED SEER INCIDENCE RATES^a
By Registry, Race and Sex

	All Races			Whites			Blacks		
	Total	Males	Females	Total	Males	Females	Total	Males	Females
<u>SEER INCIDENCE RATES^a, 2001-2005</u>									
REGISTRY									
Atlanta & Rural Georgia	449.4	547.5	385.1	451.2	531.6	400.1	470.8	631.9	373.0
Atlanta	449.5	545.6	387.0	451.2	529.8	402.0	473.1	633.6	376.2
Rural Georgia	457.5	588.1	362.4	455.2	568.4	369.1	462.8	640.3	350.9
California	440.9	511.2	392.3	452.2	517.5	407.5	477.2	599.5	389.4
Greater Bay Area	434.9	502.7	389.0	458.9	524.8	414.4	476.2	581.4	400.6
San Francisco-Oakland	440.1	507.3	394.2	462.2	525.1	419.3	484.7	587.5	411.6
San Jose-Monterey	425.0	494.6	378.4	453.2	525.0	405.5	423.0	567.8	307.8
Los Angeles	427.9	500.5	379.6	434.1	496.6	393.8	484.9	620.0	392.5
Greater California	449.5	519.4	400.0	457.8	524.0	411.3	468.9	587.3	377.3
Connecticut	504.1	583.9	451.0	508.4	583.9	459.1	475.7	607.9	385.8
Detroit	524.7	639.6	447.5	519.9	617.3	456.9	558.1	739.8	437.0
Hawaii	421.8	479.0	381.5	515.9	594.9	451.5	321.3	421.9	192.1
Iowa	474.0	552.1	422.6	469.9	544.6	421.2	509.4	647.6	396.9
Kentucky	506.1	604.2	441.6	501.7	597.0	439.3	549.6	696.0	453.6
Louisiana	491.3	616.9	404.2	485.4	596.7	407.7	515.9	692.3	401.7
New Jersey	508.8	603.6	446.0	515.1	599.8	460.0	503.4	665.5	398.6
New Mexico	414.8	482.8	362.9	430.1	499.7	376.5	324.6	387.6	272.9
Seattle-Puget Sound	498.4	570.5	447.9	512.6	582.9	463.2	500.2	637.4	385.9
Utah	406.8	486.9	344.0	411.6	492.4	348.3	390.2	499.1	290.0
9 SEER Areas ^b	471.1	551.9	415.2	481.1	557.2	429.1	505.1	656.0	403.6
11 SEER Areas ^b	458.5	537.0	404.8	469.4	542.7	420.0	498.6	644.7	399.6
13 SEER Areas ^b	458.6	537.2	404.8	469.4	542.8	419.8	498.0	644.5	398.7
17 SEER Areas ^b	467.4	549.3	411.0	475.3	551.4	423.6	500.6	651.5	398.9

^a Rates are per 100,000 and are age-adjusted to the 2000 US Std Population (19 age groups - Census P25-1130)

^b The SEER 9 areas are San Francisco, Connecticut, Detroit, Hawaii, Iowa, New Mexico, Seattle, Utah and Atlanta.

The SEER 11 areas comprise the SEER 9 areas plus San Jose-Monterey and Los Angeles.

The SEER 13 areas comprise the SEER 11 areas plus the Alaska Native Registry and Rural Georgia.

The SEER 17 areas comprise the SEER 13 areas plus California excluding SF/SJM/LA, Kentucky, Louisiana and New Jersey.

- Statistic not shown. Rate based on less than 16 cases for the time interval.

Table II-12
ALL CANCER SITES (Invasive)

AGE-ADJUSTED SEER DEATH RATES^a
 By Registry, Race and Sex

	<u>All Races</u>			<u>Whites</u>			<u>Blacks</u>		
	<u>Total</u>	<u>Males</u>	<u>Females</u>	<u>Total</u>	<u>Males</u>	<u>Females</u>	<u>Total</u>	<u>Males</u>	<u>Females</u>
<u>SEER DEATH RATES^a, 2001-2005</u>									
REGISTRY									
Atlanta & Rural Georgia	176.6	218.8	151.4	164.1	199.8	142.5	215.4	288.5	176.1
Atlanta	175.6	216.4	151.6	163.7	198.6	142.8	214.0	284.0	176.8
Rural Georgia	199.9	265.8	154.3	177.7	227.0	141.4	245.3	359.2	176.8
California	173.1	206.4	150.5	177.3	210.0	155.4	231.8	294.1	192.6
Greater Bay Area	165.4	195.2	146.0	171.9	199.9	154.5	240.8	302.9	201.4
San Francisco-Oakland	171.1	202.7	150.6	176.4	205.2	158.3	247.2	308.9	208.4
San Jose-Monterey	153.9	180.6	136.7	163.9	190.5	147.6	196.4	274.9	140.7
Los Angeles	166.8	199.1	145.6	167.2	197.4	147.7	231.9	296.7	192.7
Greater California	178.9	213.8	154.7	183.1	218.1	158.8	226.3	286.3	186.1
Connecticut	184.3	225.1	158.6	184.5	224.9	159.1	199.7	258.2	165.9
Detroit	200.0	245.6	171.2	192.1	233.7	166.1	237.9	306.7	194.8
Hawaii	152.2	189.4	123.0	181.2	219.5	150.8	97.3	133.1	58.2
Iowa	185.9	231.3	156.1	185.5	230.7	156.1	257.9	337.6	201.6
Kentucky	222.7	286.9	180.5	221.1	284.6	179.1	264.8	349.3	214.2
Louisiana	221.0	285.9	178.0	206.2	262.8	168.2	269.3	370.1	207.0
New Jersey	193.4	232.4	169.2	193.7	230.9	170.5	228.0	296.2	188.6
New Mexico	167.3	203.4	140.9	170.3	206.4	143.9	185.8	260.6	136.6
Seattle-Puget Sound	185.3	220.6	161.4	188.2	222.9	164.8	216.7	273.6	174.2
Utah	140.9	172.5	117.9	141.3	173.0	118.1	184.3	220.0	158.4
9 SEER Areas ^b	178.5	216.9	153.1	179.2	216.5	154.7	225.8	291.2	185.9
11 SEER Areas ^b	174.5	210.9	150.5	175.9	211.2	152.9	226.9	292.2	187.1
13 SEER Areas ^b	174.7	211.2	150.5	175.9	211.2	152.8	227.0	293.0	186.7
17 SEER Areas ^b	183.7	223.2	157.4	184.7	223.0	159.3	236.0	308.5	191.6
Total U.S.	189.8	234.4	159.9	188.0	230.7	159.2	234.0	313.0	186.7

^a US Mortality Files, National Center for Health Statistics, Centers for Disease Control and Prevention. Rates are per 100,000 and are age-adjusted to the 2000 US Std Population (19 age groups - Census P25-1130).

^b The SEER 9 areas are San Francisco, Connecticut, Detroit, Hawaii, Iowa, New Mexico, Seattle, Utah and Atlanta.

The SEER 11 areas comprise the SEER 9 areas plus San Jose-Monterey and Los Angeles.

The SEER 13 areas comprise the SEER 11 areas plus the Alaska Native Registry and Rural Georgia.

The SEER 17 areas comprise the SEER 13 areas plus California excluding SF/SJM/LA, Kentucky, Louisiana and New Jersey.

- Statistic not shown. Rate based on less than 16 cases for the time interval.

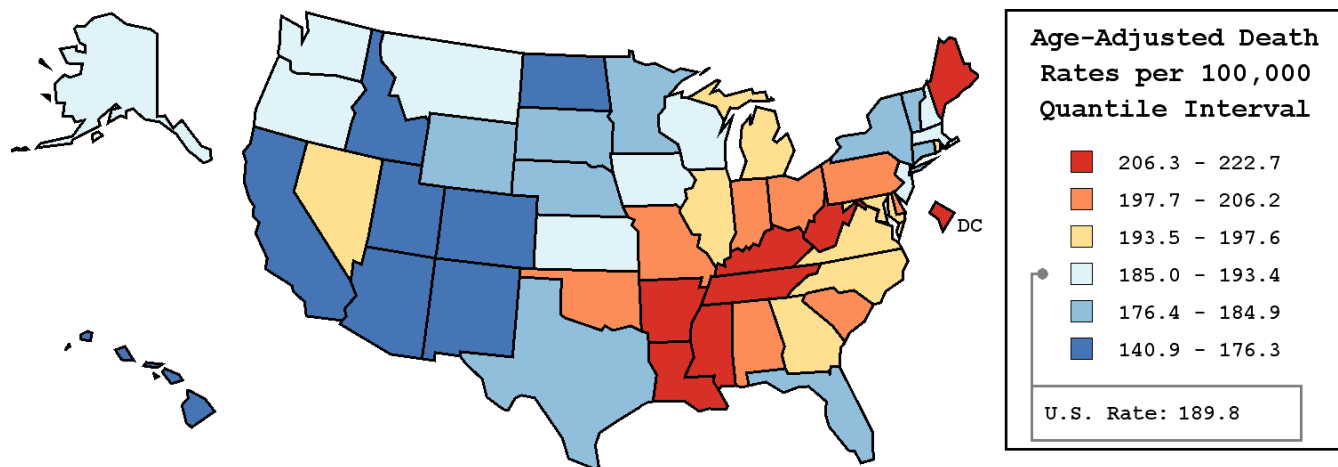
Table II-13
ALL CANCER SITES (Invasive)

AVERAGE ANNUAL AGE-ADJUSTED CANCER DEATH^a RATES BY STATE, ALL RACES, 2001-2005

Males and Females

State	Rate	SE	Rank	PD
TOTAL U.S.	189.8	0.11		
High Five States				
Kentucky	222.7 ^b	1.03	(01)	17.3 ^c
Louisiana	221.0 ^b	1.02	(02)	16.4 ^c
West Virginia	213.4 ^b	1.40	(03)	12.4 ^c
Mississippi	211.9 ^b	1.23	(04)	11.6 ^c
Tennessee	211.2 ^b	0.84	(05)	11.3 ^c
Low Five States				
Arizona	167.5 ^b	0.77	(47)	-11.7 ^c
New Mexico	167.3 ^b	1.36	(48)	-11.9 ^c
Colorado	166.4 ^b	0.95	(49)	-12.3 ^c
Hawaii	152.2 ^b	1.50	(50)	-19.8 ^c
Utah	140.9 ^b	1.29	(51)	-25.8 ^c

State	Rate	SE	Rank	PD	State	Rate	SE	Rank	PD
Alabama	206.2 ^b	0.93	(09)	8.6 ^c	Montana	186.6	1.92	(32)	-1.7
Alaska	186.5	3.36	(33)	-1.7	Nebraska	179.6 ^b	1.39	(42)	-5.4 ^c
Arizona	167.5 ^b	0.77	(47)	-11.7 ^c	Nevada	197.1 ^b	1.41	(18)	3.8
Arkansas	207.3 ^b	1.18	(07)	9.2 ^c	New Hampshire	193.0	1.73	(27)	1.7
California	173.1 ^b	0.33	(46)	-8.8 ^c	New Jersey	193.4 ^b	0.65	(25)	1.9
Colorado	166.4 ^b	0.95	(49)	-12.3 ^c	New Mexico	167.3 ^b	1.36	(48)	-11.9 ^c
Connecticut	184.3 ^b	0.98	(36)	-2.9	New York	179.9 ^b	0.42	(41)	-5.2 ^c
Delaware	204.3 ^b	2.19	(11)	7.6 ^c	North Carolina	196.1 ^b	0.69	(20)	3.3
D.C.	209.5 ^b	2.70	(06)	10.4 ^c	North Dakota	176.3 ^b	2.20	(44)	-7.1 ^c
Florida	180.1 ^b	0.41	(39)	-5.1 ^c	Ohio	204.1 ^b	0.58	(12)	7.5 ^c
Georgia	194.2 ^b	0.74	(24)	2.3	Oklahoma	200.1 ^b	1.04	(15)	5.4 ^c
Hawaii	152.2 ^b	1.50	(50)	-19.8 ^c	Oregon	192.0	1.02	(28)	1.2
Idaho	173.4 ^b	1.65	(45)	-8.6 ^c	Pennsylvania	198.5 ^b	0.52	(16)	4.6
Illinois	197.6 ^b	0.57	(17)	4.1	Rhode Island	194.7	1.80	(22)	2.6
Indiana	205.1 ^b	0.81	(10)	8.1 ^c	South Carolina	200.7 ^b	0.98	(14)	5.7 ^c
Iowa	185.9 ^b	1.05	(34)	-2.1	South Dakota	182.8	2.07	(38)	-3.7
Kansas	187.0	1.15	(30)	-1.5	Tennessee	211.2 ^b	0.84	(05)	11.3 ^c
Kentucky	222.7 ^b	1.03	(01)	17.3 ^c	Texas	184.9 ^b	0.45	(35)	-2.6
Louisiana	221.0 ^b	1.02	(02)	16.4 ^c	Utah	140.9 ^b	1.29	(51)	-25.8 ^c
Maine	206.8 ^b	1.65	(08)	9.0 ^c	Vermont	183.6	2.36	(37)	-3.3
Maryland	196.6 ^b	0.87	(19)	3.6	Virginia	194.7 ^b	0.75	(23)	2.6
Massachusetts	193.4 ^b	0.75	(26)	1.9	Washington	187.1	0.80	(29)	-1.4
Michigan	195.3 ^b	0.62	(21)	2.9	West Virginia	213.4 ^b	1.40	(03)	12.4 ^c
Minnesota	178.8 ^b	0.85	(43)	-5.8 ^c	Wisconsin	186.7 ^b	0.81	(31)	-1.6
Mississippi	211.9 ^b	1.23	(04)	11.6 ^c	Wyoming	180.0 ^b	2.70	(40)	-5.2 ^c
Missouri	201.9 ^b	0.81	(13)	6.4 ^c					



^a US Mortality Files, National Center for Health Statistics, Centers for Disease Control and Prevention. Rates are per 100,000 and are age-adjusted to the 2000 US Std Population (19 age groups - Census P25-1130).
^b Difference between state rate and total U.S. rate is statistically significant ($p \leq .0002$).
^c Absolute percent difference between state rate and total U.S. rate is 5% or more.
SE Standard error of the rate.
PD Percent difference between state rate and total U.S. rate.

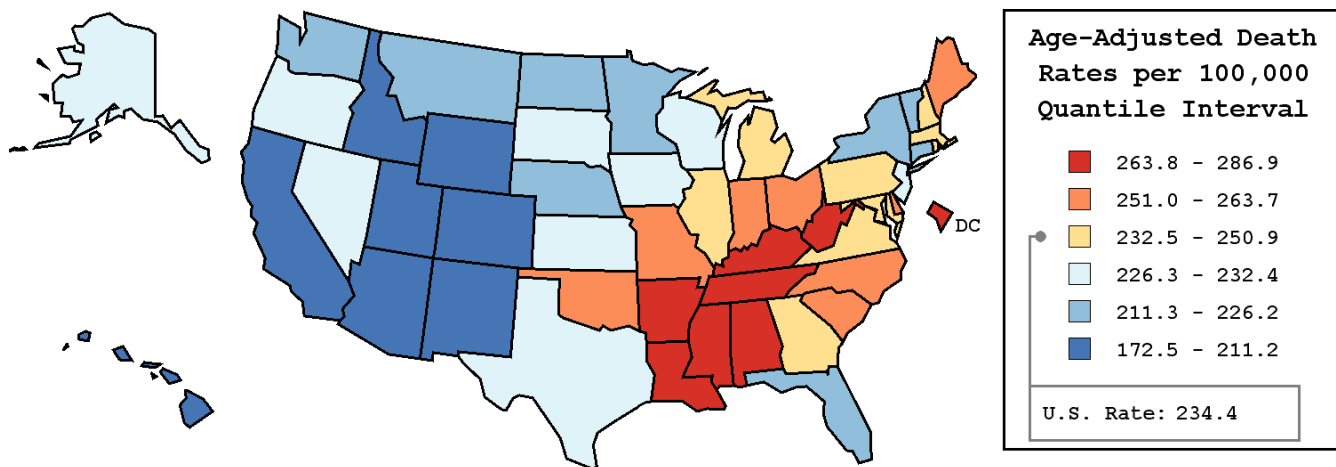
Table II-14
ALL CANCER SITES (Invasive)

AVERAGE ANNUAL AGE-ADJUSTED CANCER DEATH^a RATES BY STATE, ALL RACES, 2001-2005

Males

State	Rate	SE	Rank	PD
TOTAL U.S.	234.4	0.20		
High Five States				
Kentucky	286.9 ^b	1.86	(01)	22.4 ^c
Louisiana	285.9 ^b	1.84	(02)	22.0 ^c
Mississippi	282.6 ^b	2.25	(03)	20.6 ^c
D.C.	275.5 ^b	5.01	(04)	17.5 ^c
Tennessee	272.4 ^b	1.53	(05)	16.2 ^c
Low Five States				
New Mexico	203.4 ^b	2.29	(47)	-13.2 ^c
Arizona	201.3 ^b	1.27	(48)	-14.1 ^c
Colorado	199.3 ^b	1.63	(49)	-15.0 ^c
Hawaii	189.4 ^b	2.50	(50)	-19.2 ^c
Utah	172.5 ^b	2.18	(51)	-26.4 ^c

State	Rate	SE	Rank	PD	State	Rate	SE	Rank	PD
Alabama	271.7 ^b	1.71	(06)	15.9 ^c	Montana	222.0 ^b	3.18	(38)	-5.3 ^c
Alaska	226.7	5.80	(34)	-3.3	Nebraska	220.6 ^b	2.38	(39)	-5.9 ^c
Arizona	201.3 ^b	1.27	(48)	-14.1 ^c	Nevada	229.4	2.30	(31)	-2.1
Arkansas	266.8 ^b	2.07	(07)	13.8 ^c	New Hampshire	237.6	3.02	(25)	1.4
California	206.4 ^b	0.56	(46)	-11.9 ^c	New Jersey	232.4	1.13	(26)	-0.9
Colorado	199.3 ^b	1.63	(49)	-15.0 ^c	New Mexico	203.4 ^b	2.29	(47)	-13.2 ^c
Connecticut	225.1 ^b	1.70	(36)	-4.0	New York	217.1 ^b	0.73	(42)	-7.4 ^c
Delaware	252.8 ^b	3.80	(13)	7.8 ^c	North Carolina	251.8 ^b	1.25	(16)	7.4 ^c
D.C.	275.5 ^b	5.01	(04)	17.5 ^c	North Dakota	216.3 ^b	3.69	(43)	-7.7 ^c
Florida	219.9 ^b	0.68	(40)	-6.2 ^c	Ohio	254.9 ^b	1.02	(12)	8.7 ^c
Georgia	250.9 ^b	1.37	(17)	7.0 ^c	Oklahoma	252.2 ^b	1.82	(14)	7.6 ^c
Hawaii	189.4 ^b	2.50	(50)	-19.2 ^c	Oregon	228.2 ^b	1.69	(32)	-2.6
Idaho	208.4 ^b	2.74	(45)	-11.1 ^c	Pennsylvania	246.4 ^b	0.90	(18)	5.1 ^c
Illinois	245.6 ^b	1.00	(19)	4.8	Rhode Island	243.3	3.17	(21)	3.8
Indiana	257.7 ^b	1.44	(10)	9.9 ^c	South Carolina	263.7 ^b	1.80	(09)	12.5 ^c
Iowa	231.3	1.80	(29)	-1.3	South Dakota	228.2	3.50	(33)	-2.6
Kansas	231.9	1.97	(28)	-1.1	Tennessee	272.4 ^b	1.53	(05)	16.2 ^c
Kentucky	286.9 ^b	1.86	(01)	22.4 ^c	Texas	232.3	0.80	(27)	-0.9
Louisiana	285.9 ^b	1.84	(02)	22.0 ^c	Utah	172.5 ^b	2.18	(51)	-26.4 ^c
Maine	256.0 ^b	2.87	(11)	9.2 ^c	Vermont	226.2	4.11	(35)	-3.5
Maryland	241.4 ^b	1.53	(22)	3.0	Virginia	244.8 ^b	1.35	(20)	4.4
Massachusetts	237.8	1.31	(24)	1.5	Washington	222.8 ^b	1.35	(37)	-4.9
Michigan	240.2 ^b	1.08	(23)	2.5	West Virginia	265.6 ^b	2.45	(08)	13.3 ^c
Minnesota	219.2 ^b	1.45	(41)	-6.5 ^c	Wisconsin	230.8	1.39	(30)	-1.5
Mississippi	282.6 ^b	2.25	(03)	20.6 ^c	Wyoming	211.2 ^b	4.47	(44)	-9.9 ^c
Missouri	252.1 ^b	1.42	(15)	7.6 ^c					



^a US Mortality Files, National Center for Health Statistics, Centers for Disease Control and Prevention. Rates are per 100,000 and are age-adjusted to the 2000 US Std Population (19 age groups - Census P25-1130).
^b Difference between state rate and total U.S. rate is statistically significant ($p \leq .0002$).
^c Absolute percent difference between state rate and total U.S. rate is 5% or more.
SE Standard error of the rate.
PD Percent difference between state rate and total U.S. rate.

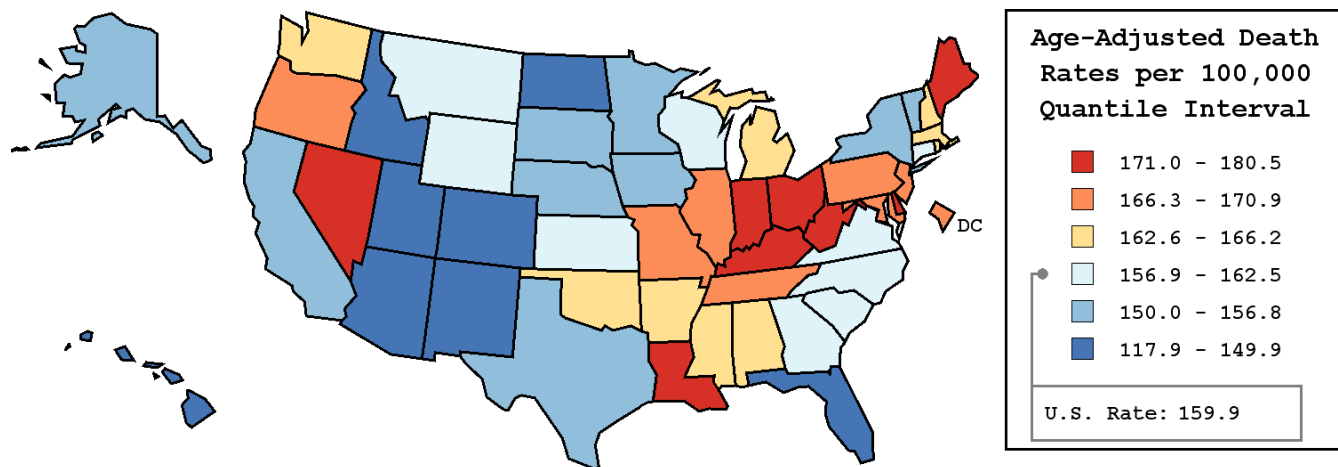
Table II-15
ALL CANCER SITES (Invasive)

AVERAGE ANNUAL AGE-ADJUSTED CANCER DEATH^a RATES BY STATE, ALL RACES, 2001-2005

Females

State	Rate	SE	Rank	PD
TOTAL U.S.	159.9	0.14		
High Five States				
Kentucky	180.5 ^b	1.23	(01)	12.9 ^c
West Virginia	178.2 ^b	1.71	(02)	11.4 ^c
Louisiana	178.0 ^b	1.21	(03)	11.3 ^c
Maine	173.8 ^b	2.02	(04)	8.7 ^c
Nevada	171.6 ^b	1.78	(05)	7.3 ^c
Low Five States				
Colorado	145.4 ^b	1.17	(47)	-9.1 ^c
Arizona	142.0 ^b	0.96	(48)	-11.2 ^c
New Mexico	140.9 ^b	1.67	(49)	-11.9 ^c
Hawaii	123.0 ^b	1.83	(50)	-23.1 ^c
Utah	117.9 ^b	1.58	(51)	-26.3 ^c

State	Rate	SE	Rank	PD	State	Rate	SE	Rank	PD
Alabama	163.6	1.10	(24)	2.3	Montana	162.0	2.43	(27)	1.3
Alaska	155.9	4.10	(38)	-2.5	Nebraska	152.4 ^b	1.73	(41)	-4.7
Arizona	142.0 ^b	0.96	(48)	-11.2 ^c	Nevada	171.6 ^b	1.78	(05)	7.3 ^c
Arkansas	166.2 ^b	1.41	(17)	3.9	New Hampshire	164.2	2.13	(23)	2.7
California	150.5 ^b	0.41	(43)	-5.9 ^c	New Jersey	169.2 ^b	0.80	(11)	5.8 ^c
Colorado	145.4 ^b	1.17	(47)	-9.1 ^c	New Mexico	140.9 ^b	1.67	(49)	-11.9 ^c
Connecticut	158.6	1.21	(30)	-0.8	New York	156.8 ^b	0.52	(35)	-1.9
Delaware	171.0 ^b	2.66	(08)	6.9 ^c	North Carolina	160.1	0.82	(28)	0.1
D.C.	169.4	3.17	(10)	5.9 ^c	North Dakota	149.6 ^b	2.77	(45)	-6.4 ^c
Florida	149.9 ^b	0.51	(44)	-6.3 ^c	Ohio	171.2 ^b	0.70	(06)	7.1 ^c
Georgia	158.3	0.87	(31)	-1.0	Oklahoma	164.5 ^b	1.26	(21)	2.9
Hawaii	123.0 ^b	1.83	(50)	-23.1 ^c	Oregon	166.9 ^b	1.27	(16)	4.4
Idaho	147.6 ^b	2.06	(46)	-7.7 ^c	Pennsylvania	168.0 ^b	0.63	(13)	5.1 ^c
Illinois	167.3 ^b	0.69	(15)	4.6	Rhode Island	164.4	2.20	(22)	2.8
Indiana	171.1 ^b	0.98	(07)	7.0 ^c	South Carolina	159.0	1.15	(29)	-0.6
Iowa	156.1	1.29	(37)	-2.4	South Dakota	150.8 ^b	2.56	(42)	-5.7 ^c
Kansas	157.3	1.41	(34)	-1.6	Tennessee	170.9 ^b	1.00	(09)	6.9 ^c
Kentucky	180.5 ^b	1.23	(01)	12.9 ^c	Texas	152.6 ^b	0.54	(40)	-4.6
Louisiana	178.0 ^b	1.21	(03)	11.3 ^c	Utah	117.9 ^b	1.58	(51)	-26.3 ^c
Maine	173.8 ^b	2.02	(04)	8.7 ^c	Vermont	156.2	2.91	(36)	-2.3
Maryland	167.6 ^b	1.06	(14)	4.8	Virginia	162.5	0.90	(26)	1.6
Massachusetts	166.2 ^b	0.92	(18)	3.9	Washington	162.7	1.01	(25)	1.8
Michigan	165.7 ^b	0.76	(20)	3.6	West Virginia	178.2 ^b	1.71	(02)	11.4 ^c
Minnesota	153.0 ^b	1.05	(39)	-4.3	Wisconsin	157.6	0.99	(32)	-1.4
Mississippi	165.8 ^b	1.43	(19)	3.7	Wyoming	157.4	3.42	(33)	-1.6
Missouri	168.6 ^b	0.99	(12)	5.4 ^c					



^a US Mortality Files, National Center for Health Statistics, Centers for Disease Control and Prevention. Rates are per 100,000 and are age-adjusted to the 2000 US Std Population (19 age groups - Census P25-1130).
^b Difference between state rate and total U.S. rate is statistically significant ($p \leq .0002$).
^c Absolute percent difference between state rate and total U.S. rate is 5% or more.
SE Standard error of the rate.
PD Percent difference between state rate and total U.S. rate.

Table II-16
ALL CANCER SITES (Invasive)

Estimated United States Cancer Prevalence Counts^a on January 1, 2005
By Race/Ethnicity, Sex and Years Since Diagnosis

Years Since Diagnosis	0 to <5	5 to <10	10 to <15	15 to <20	20 to <25	25 to <30	0 to <15 ^e	0 to <30 ^e	>=30 ^g	Complete ^h
<u>Race/Sex</u>										
All Races ^b	4,047,630	2,669,631	1,766,113	1,019,963	599,763	402,640	8,483,375	10,505,741	592,709	11,098,450
Males	2,069,338	1,307,711	836,905	374,429	197,838	110,132	4,213,955	4,896,353	120,806	5,017,159
Females	1,978,292	1,361,920	929,208	645,534	401,925	292,508	4,269,420	5,609,388	471,903	6,081,291
White ^b	3,505,535	2,345,934	1,582,582	927,604	548,404	368,182	7,434,050	9,278,240	524,364	9,802,604
Males	1,783,465	1,140,227	749,465	342,954	182,989	101,749	3,673,157	4,300,849	112,370	4,413,219
Females	1,722,070	1,205,707	833,117	584,650	365,415	266,433	3,760,893	4,977,391	411,994	5,389,385
Black ^b	376,663	221,875	126,932	61,263	34,507	22,272	725,470	843,511	32,984	876,495
Males	204,157	119,998	63,513	21,191	9,722	4,883	387,668	423,463	3,508	426,971
Females	172,506	101,877	63,419	40,072	24,785	17,389	337,802	420,048	29,476	449,524
Asian/Pacific Islander ^c	101,457	57,985	33,530	+	+	+	192,972	+	+	+
Males	44,546	23,346	12,527	+	+	+	80,419	+	+	+
Females	56,911	34,639	21,003	+	+	+	112,553	+	+	+
Hispanic ^d	225,763	129,311	80,093	+	+	+	435,168	+	+	+
Males	109,189	60,160	33,879	+	+	+	203,229	+	+	+
Females	116,574	69,151	46,214	+	+	+	231,939	+	+	+

Estimated prevalence percent^a on January 1, 2005, of the SEER 11 population diagnosed in the previous 15 years
By Age at Prevalence, Race/Ethnicity and Sex

Age at Prevalence	Age Specific (Crude)										Age-Adjusted ^f
	All Ages	0-9	10-19	20-29	30-39	40-49	50-59	60-69	70-79	80+	All Ages
<u>Race/Sex</u>											
All Races ^c	2.5665%	0.0751%	0.1545%	0.2626%	0.6521%	1.5479%	3.7013%	8.1540%	13.5257%	14.5615%	2.6954%
Males	2.5517%	0.0794%	0.1635%	0.2445%	0.5114%	1.0541%	2.9999%	8.9457%	18.1752%	21.4303%	3.0858%
Females	2.5810%	0.0705%	0.1450%	0.2818%	0.7972%	2.0393%	4.3674%	7.4419%	9.9672%	10.7713%	2.4751%
White ^c	2.8091%	0.0807%	0.1690%	0.2917%	0.7220%	1.6386%	3.8364%	8.5408%	14.1986%	14.9919%	2.8235%
Males	2.7614%	0.0860%	0.1795%	0.2717%	0.5769%	1.1295%	3.0751%	9.1701%	18.6971%	21.7580%	3.1798%
Females	2.8568%	0.0752%	0.1581%	0.3137%	0.8780%	2.1616%	4.5817%	7.9592%	10.6784%	11.3062%	2.6334%
Black ^c	1.8442%	0.0523%	0.1040%	0.1706%	0.4569%	1.2391%	3.6484%	8.4041%	13.3074%	12.4859%	2.5325%
Males	2.0672%	0.0498%	0.1067%	0.1540%	0.3212%	0.8620%	3.6986%	11.4989%	21.3769%	21.4479%	3.4670%
Females	1.6420%	0.0548%	0.1012%	0.1863%	0.5761%	1.5699%	3.6067%	5.9835%	7.9668%	8.1636%	1.9573%
Asian/Pacific Islander ^c	1.6210%	0.0598%	0.1181%	0.1624%	0.3852%	1.1320%	2.5941%	4.8656%	8.2375%	10.3676%	1.7546%
Males	1.4420%	0.0646%	0.1277%	0.1453%	0.2430%	0.5881%	1.5462%	4.5856%	10.6326%	14.9282%	1.8100%
Females	1.7887%	0.0548%	0.1078%	0.1793%	0.5197%	1.6296%	3.5117%	5.1007%	6.4987%	7.3349%	1.7650%
Hispanic ^d	1.0253%	0.0713%	0.1408%	0.1805%	0.4458%	1.1046%	2.5056%	5.4872%	9.4444%	10.2114%	1.8788%
Males	0.9155%	0.0757%	0.1478%	0.1678%	0.3329%	0.6242%	1.7701%	5.8656%	13.2222%	15.5695%	2.1411%
Females	1.1415%	0.0667%	0.1335%	0.1958%	0.5764%	1.6095%	3.1963%	5.1701%	6.7139%	7.1273%	1.7625%

^a US 2005 cancer prevalence counts are based on 2005 cancer prevalence proportions from the SEER registries and 1/1/2005 US population estimates based on the average of 2004 and 2005 population estimates from the US Bureau of the Census. Prevalence was calculated using the First Malignant Primary Only for a person.

^{b c d} Statistics based on (b) SEER 9 Areas (c) SEER 11 Areas and Rural Georgia (d) NHIA for Hispanic for SEER 11 Areas and Rural Georgia.

^e Maximum limited-duration prevalence: 30 years for 1975-2005 SEER 9 data; 15 years for 1990-2005 SEER 11 data (used to calculate prevalence for Hispanics and Asian Pacific Islanders).

^{f h} Percentages are age-adjusted to the 2000 US Standard Population (19 age groups - Census P25-1130) by 5-year age groups.

^{g h} (g) Cases diagnosed more than 30 years ago were estimated using the completeness index method (Capocaccia et. al. 1997, Merrill et. al. 2000). (h) Complete prevalence is obtained by summing 0 to <30 and >=30.

- Statistic not shown. Statistic based on fewer than 5 cases estimated alive in SEER for the time interval.

+ Not available.

SEER Incidence, Delay Adjusted Incidence and US Death Rates^a All Cancer Sites, by Race and Sex

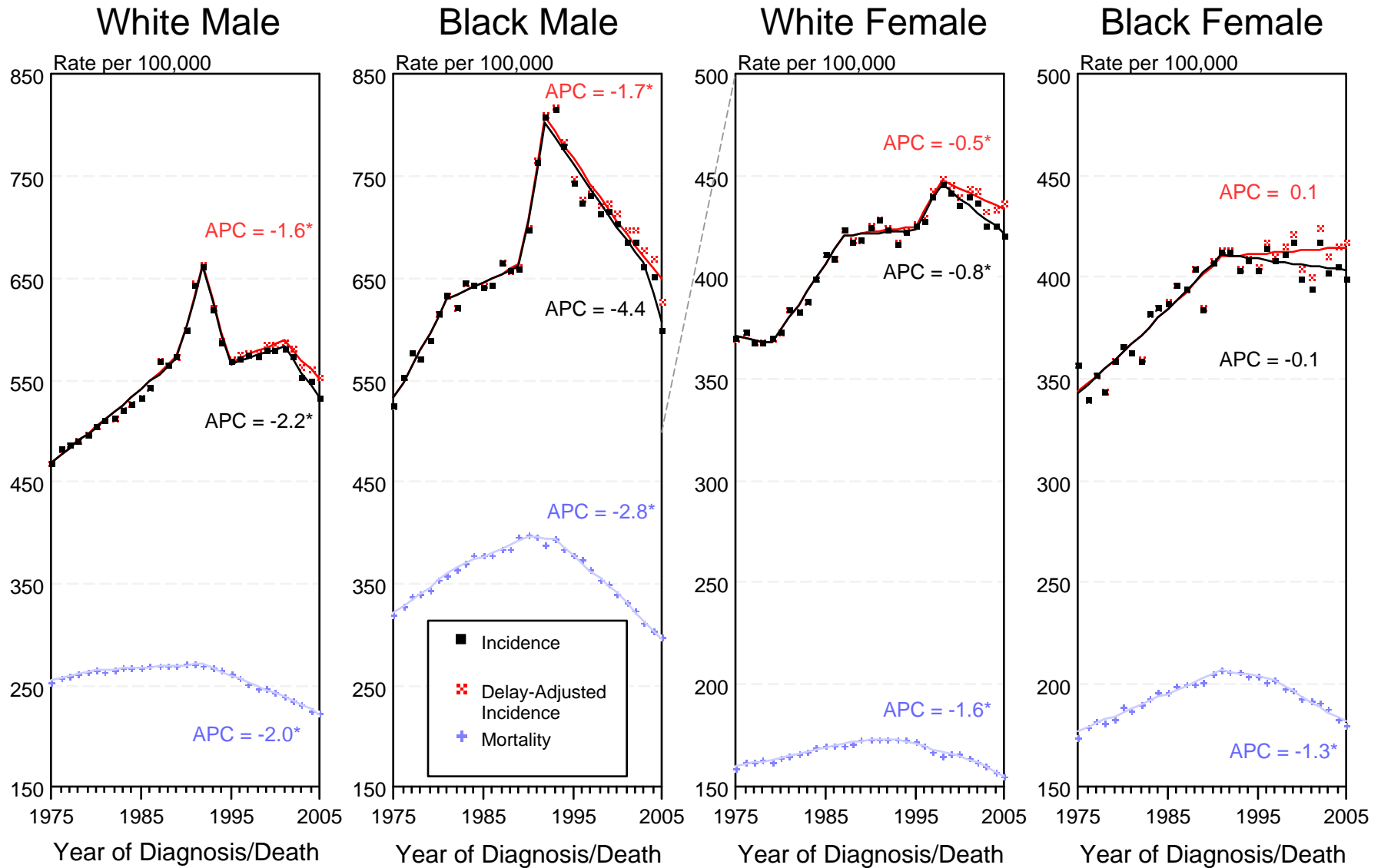


Figure II-1

^a Source: SEER 9 areas and US Mortality Files (National Center for Health Statistics, CDC). Rates are age-adjusted to the 2000 US Std Population (19 age groups - Census P25-1103). Regression lines and APCs are calculated using the Joinpoint Regression Program Version 3.3.1, April 2008, National Cancer Institute. The APC is the Annual Percent Change for the regression line segments. The APC shown on the graph is for the most recent trend.
* The APC is significantly different from zero ($p < 0.05$).

SEER Incidence, Delay Adjusted Incidence and US Death Rates^a All Cancer Sites, Under 65 Years of Age, by Race and Sex

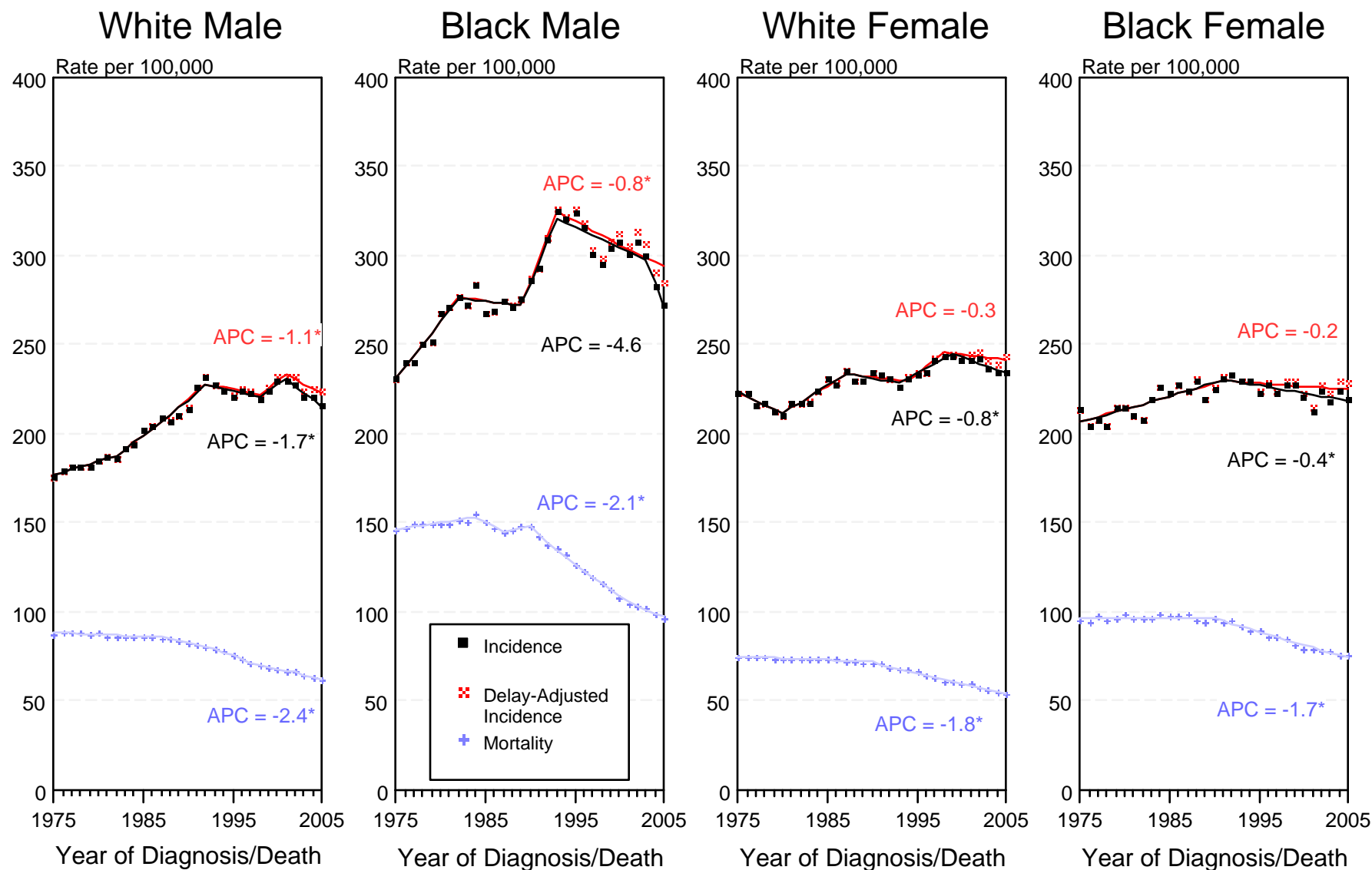


Figure II-2

^a Source: SEER 9 areas and US Mortality Files (National Center for Health Statistics, CDC). Rates are age-adjusted to the 2000 US Std Population (19 age groups - Census P25-1103). Regression lines and APCs are calculated using the Joinpoint Regression Program Version 3.3.1, April 2008, National Cancer Institute. The APC is the Annual Percent Change for the regression line segments. The APC shown on the graph is for the most recent trend.
* The APC is significantly different from zero ($p < 0.05$).

SEER Incidence, Delay Adjusted Incidence and US Death Rates^a All Cancer Sites, Ages 65 and Over, by Race and Sex

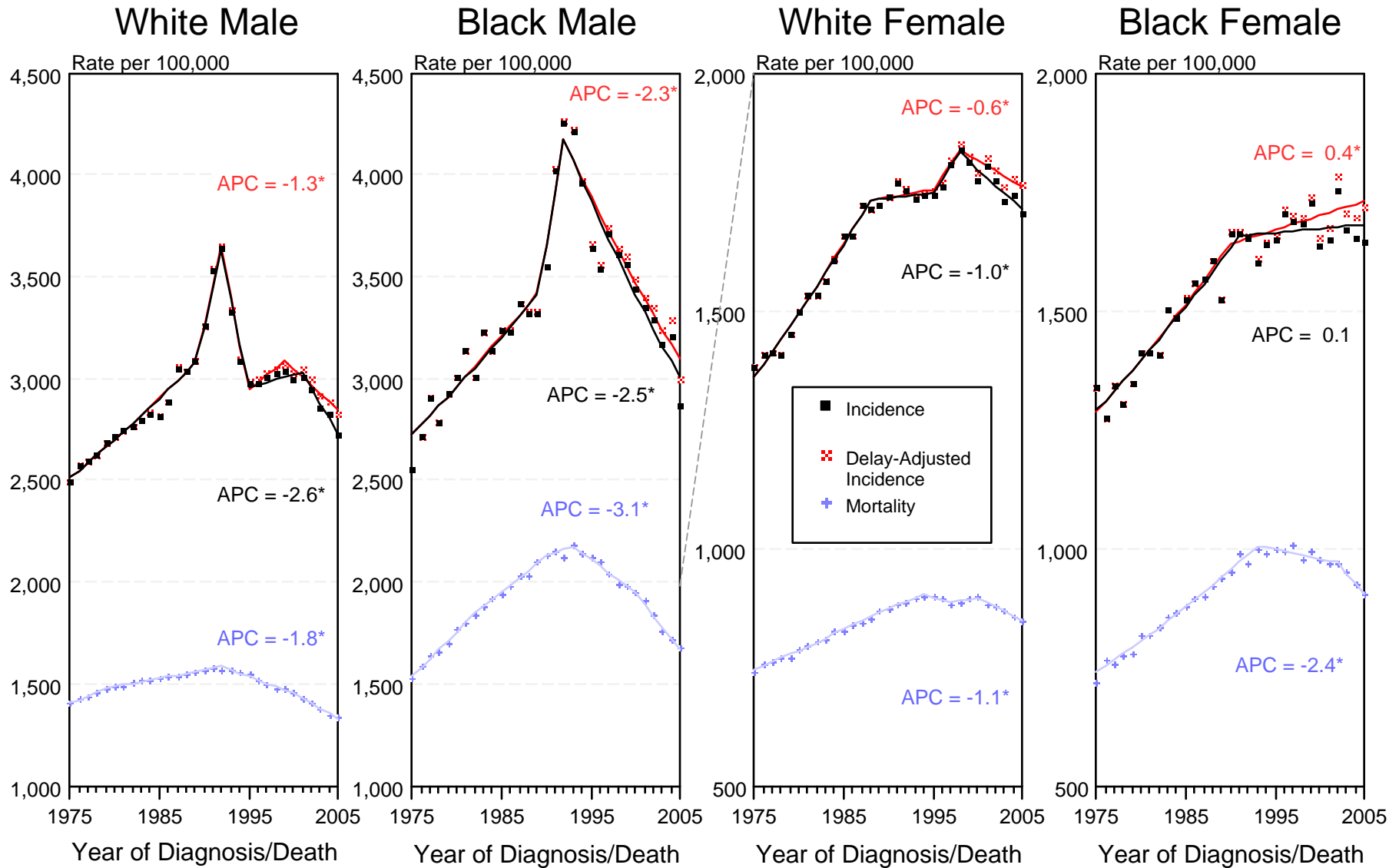


Figure II-3

^a Source: SEER 9 areas and US Mortality Files (National Center for Health Statistics, CDC). Rates are age-adjusted to the 2000 US Std Population (19 age groups - Census P25-1103). Regression lines and APCs are calculated using the Joinpoint Regression Program Version 3.3.1, April 2008, National Cancer Institute. The APC is the Annual Percent Change for the regression line segments. The APC shown on the graph is for the most recent trend.
* The APC is significantly different from zero ($p < 0.05$).

SEER Incidence and US Death Rates^a All Cancer Sites, Both Sexes

Joinpoint Analyses for Whites and Blacks from 1975-2005

and for Asian/Pacific Islanders, American Indians/Alaska Natives and Hispanics from 1992-2005

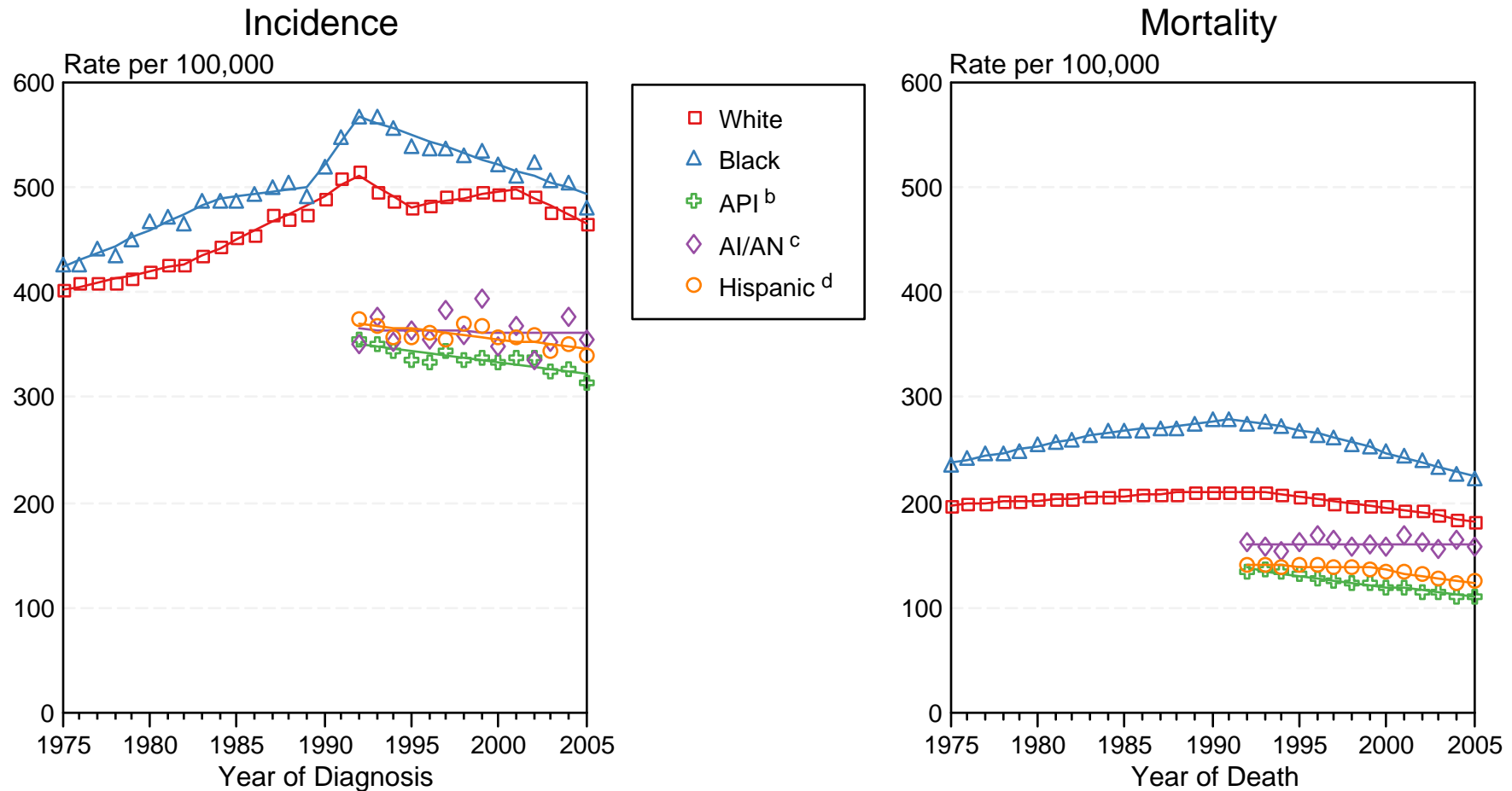


Figure 11-4

Source: Incidence data for whites and blacks are from the SEER 9 areas (San Francisco, Connecticut, Detroit, Hawaii, Iowa, New Mexico, Seattle, Utah, Atlanta).

Incidence data for Asian/Pacific Islanders, American Indians/Alaska Natives and Hispanics are from the SEER 13 Areas (SEER 9 Areas, San Jose-Monterey, Los Angeles, Alaska Native Registry and Rural Georgia). Mortality data are from US Mortality Files, National Center for Health Statistics, CDC.

^a Rates are age-adjusted to the 2000 US Std Population (19 age groups - Census P25-1103).

Regression lines are calculated using the Joinpoint Regression Program Version 3.3.1, April 2008, National Cancer Institute. Joinpoint analyses for Whites and Blacks during the 1975-2005 period allow a maximum of 4 joinpoints. Analyses for other ethnic groups during the period 1992-2005 allow a maximum of 3 joinpoints.

^b API = Asian/Pacific Islander.

^c AI/AN = American Indian/Alaska Native. Rates for American Indian/Alaska Native are based on the CHSDA(Contract Health Service Delivery Area) counties.

^d Hispanic is not mutually exclusive from whites, blacks, Asian/Pacific Islanders, and American Indians/Alaska Natives. Incidence data for Hispanics are based on NHIA and exclude cases from the Alaska Native Registry. Mortality data for Hispanics exclude cases from Connecticut, Maine, Maryland, Minnesota, New Hampshire, New York, North Dakota, Oklahoma, and Vermont.