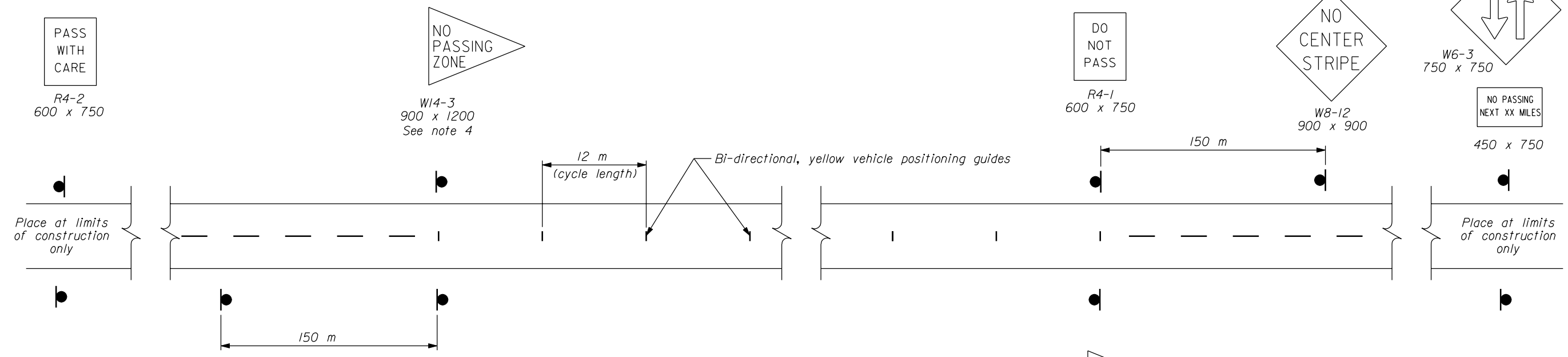


**NOTE:**

1. For periods as noted in Table A, pavement may be unmarked if appropriate vehicle positioning guides are provided.
2. Typical spacing between Vehicle Position Guides is 12 m as shown. In areas of severe curvature the spacing is 6 m. Areas of severe curvature are shown in the plans or provided in the Vehicle Positioning Guide Schedule.
3. Vehicle positioning guides shall meet the requirements of Section 718.21(b).
4. When ADT > 1000 and special hazards are present, supplement the R4-1 sign at the beginning of each no passing zone with a W14-3 sign mounted on the left of the roadside.
5. W14-3 and R4-1 shall be repeated at 1 km intervals minimum.



ADT	MAXIMUM DURATION BEFORE MARKINGS ARE REQUIRED
≤ 1000	14 Days
> 1000	3 Days

U.S. DEPARTMENT OF TRANSPORTATION  
 FEDERAL HIGHWAY ADMINISTRATION  
 FEDERAL LANDS HIGHWAY

**METRIC STANDARD**

**VEHICLE POSITIONING GUIDES  
 FOR TEMPORARY USE WITH  
 UNMARKED PAVEMENTS**

STANDARD APPROVED FOR USE 6/1998

REVISOR: STANDARD  
**M635-1**

NO SCALE