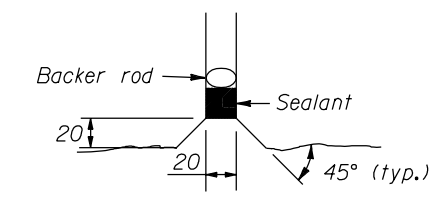
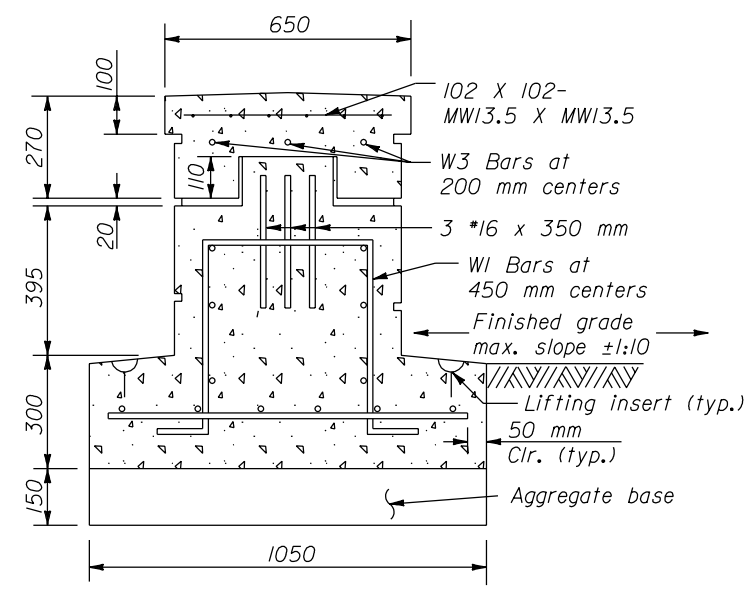
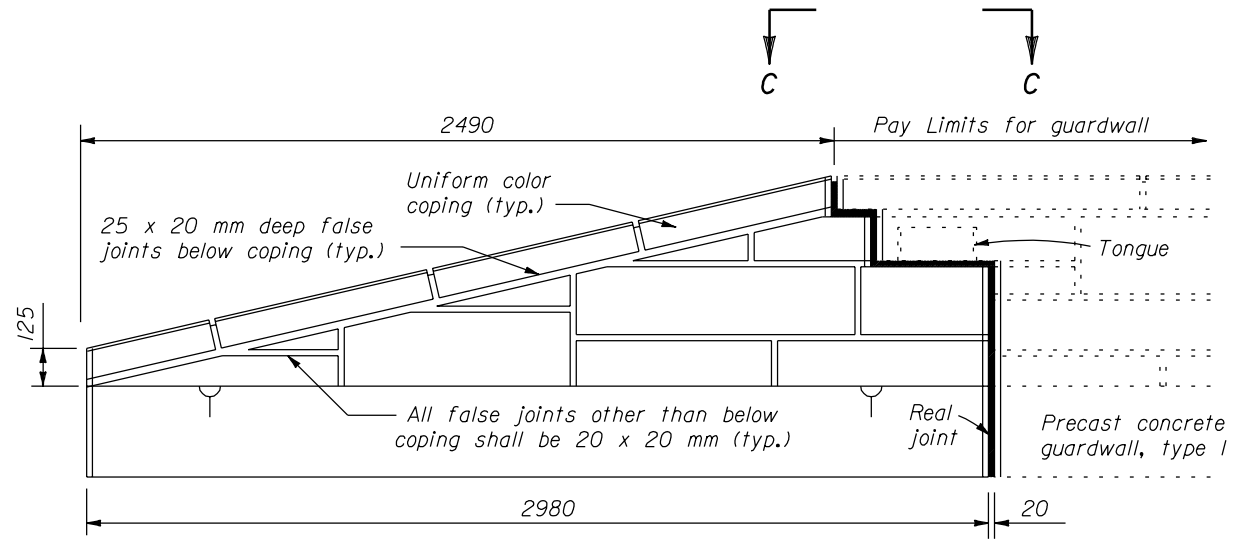


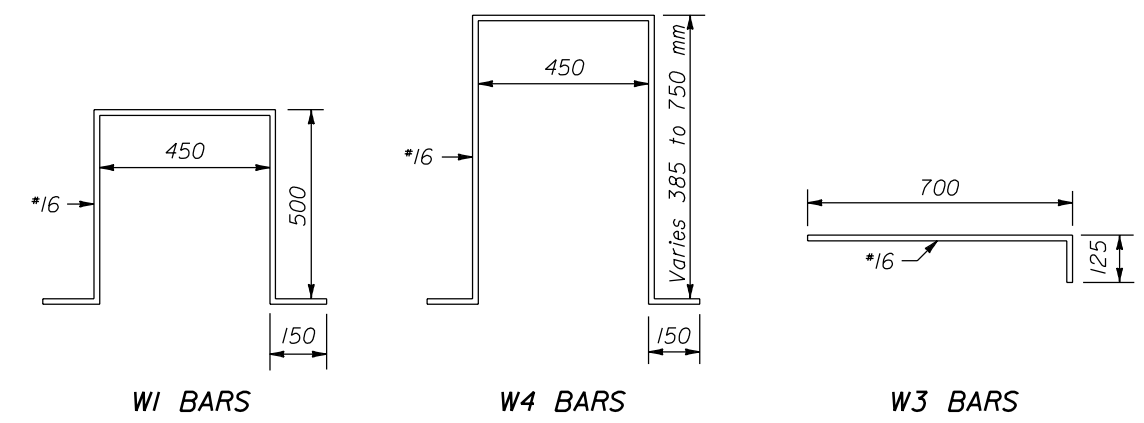
- NOTE:**
- Dimensions not labeled are in millimeters.
  - Terminal sections, Type A and Type B, are to interlock with any of the precast concrete guardwall segments.
  - Sealant for the real joint covers the perimeter joint of the capstone, sides, and top and sides of the footing.
  - Precast the entire wall section, no cast-in-place is allowed.
  - Unless located outside the clear zone, use terminal sections Type A and B with an earth berm as detailed on Standard M204-1, Earth Berm for Roadside Barrier Terminal Sections, and M204-2, Earth Berm for Median Barrier Terminal Sections.
  - Minimum concrete cover 50 mm unless shown otherwise.



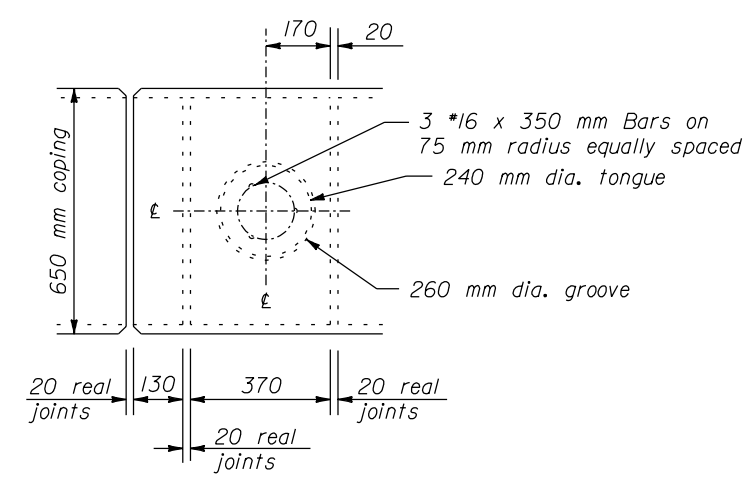
**TYPE B  
TERMINAL SECTIONS**

**SECTION B-B**

**REAL JOINTS DETAIL**



**BENDING DIAGRAMS**



**VIEW C-C**

NO SCALE

U.S. DEPARTMENT OF TRANSPORTATION  
FEDERAL HIGHWAY ADMINISTRATION  
FEDERAL LANDS HIGHWAY

**METRIC STANDARD**

**PRECAST CONCRETE GUARDWALL  
TYPE I TERMINAL SECTIONS,  
TYPES A AND B**

STANDARD APPROVED FOR USE 3/1996  
REVISED: 5/1997

STANDARD  
**M618-3**

20 NOV 2000 f:\standrow\metric\c\ms161803.dgn