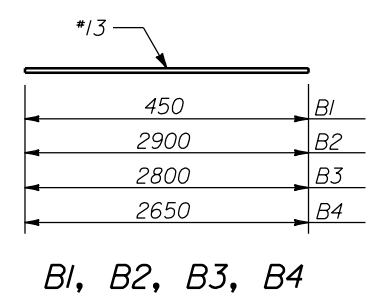
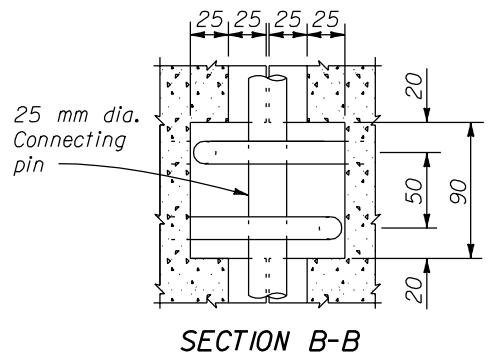
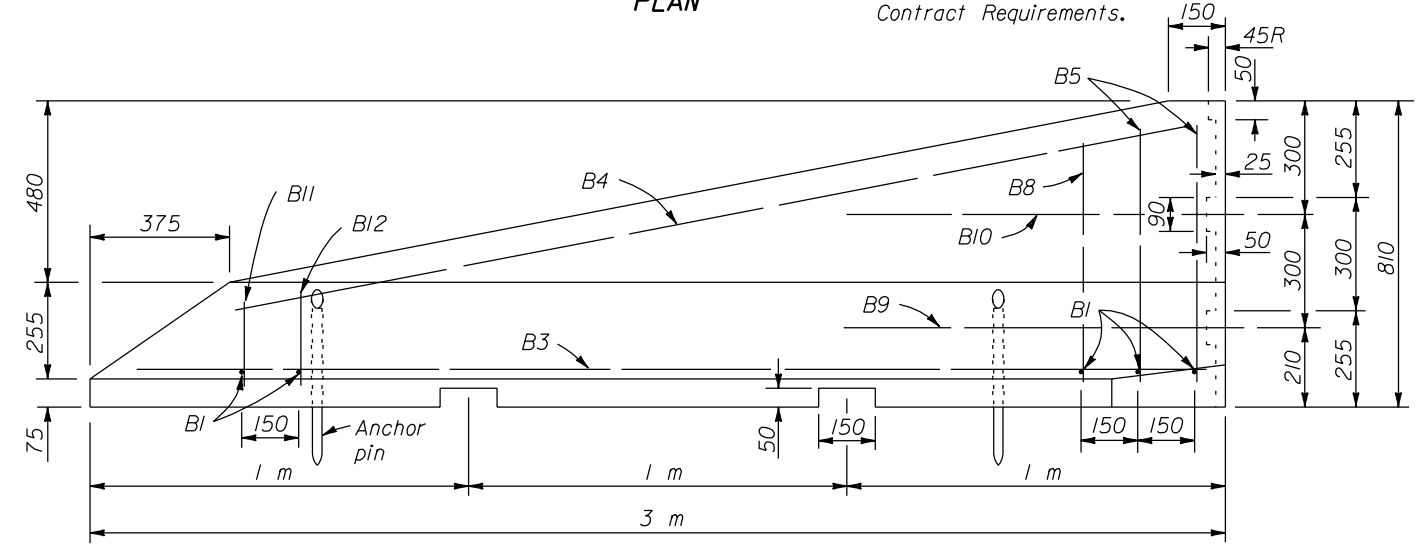
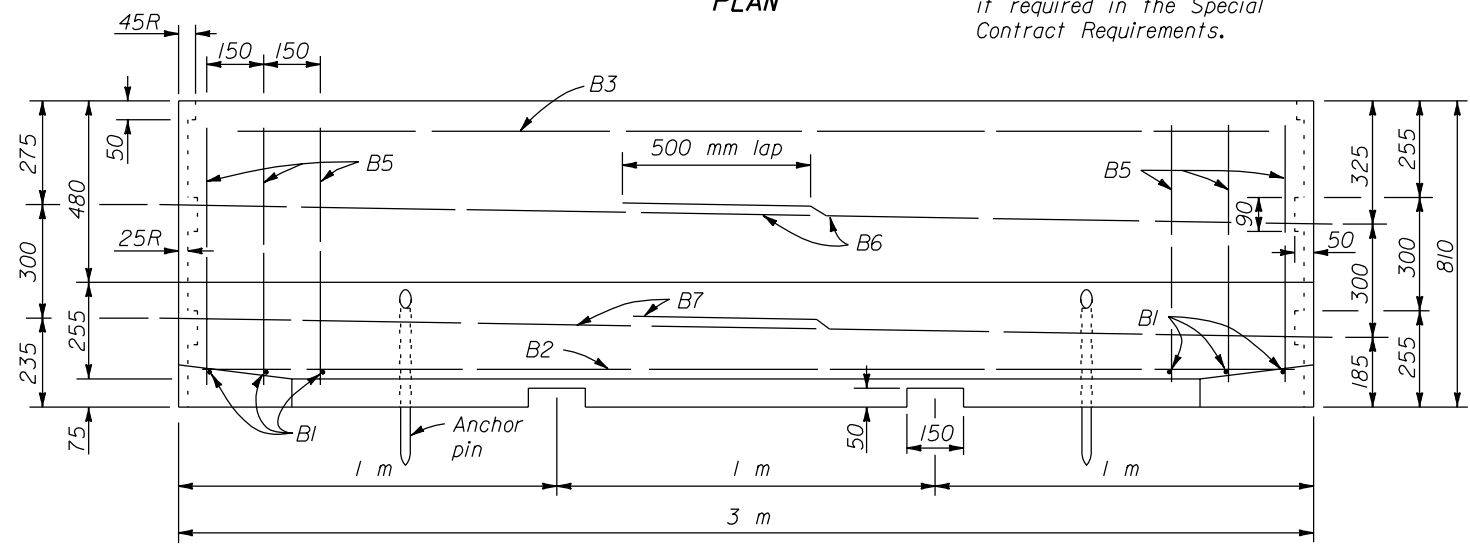
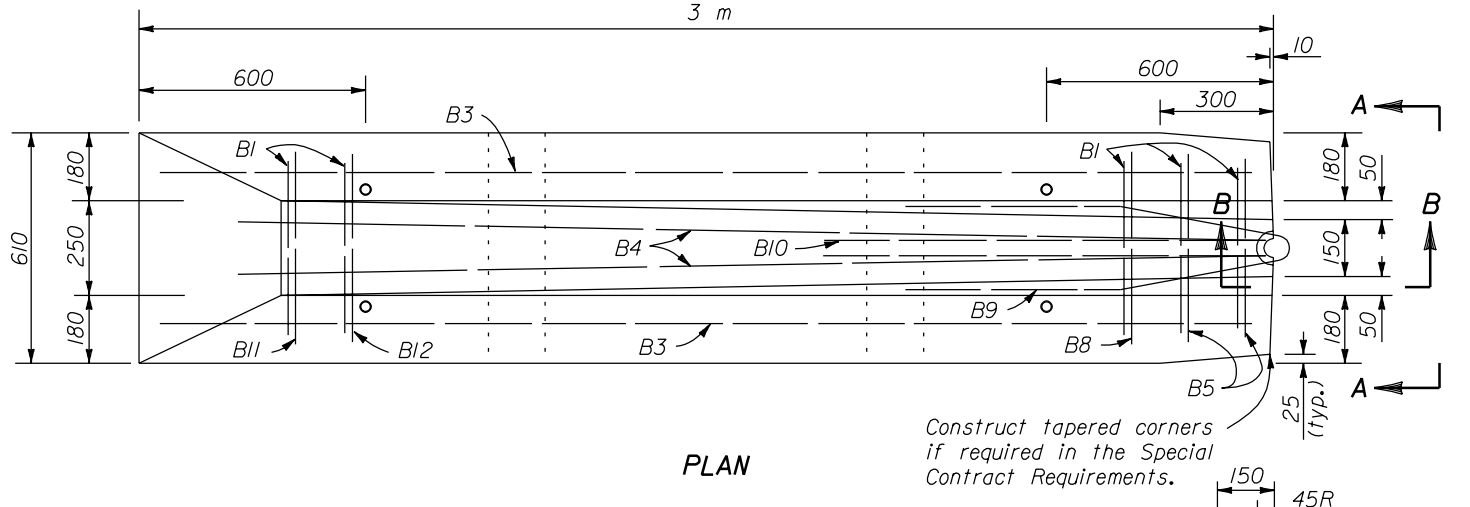
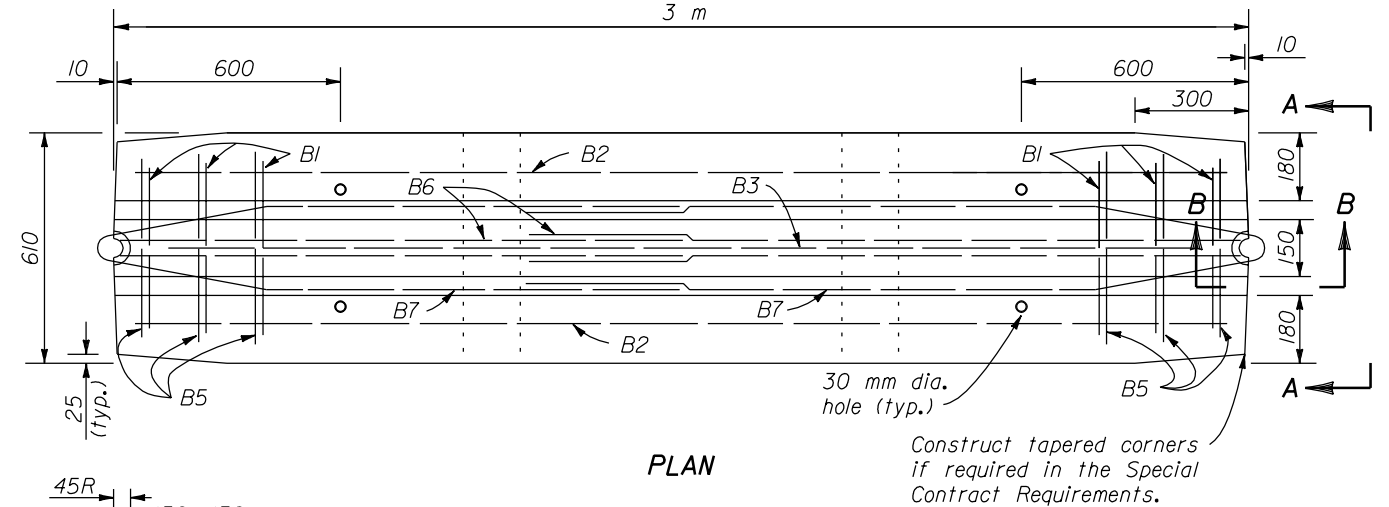


- NOTE:**
- Dimensions not labeled are in millimeters.
  - Provide for a clear cover of 50 mm for all reinforcing steel except as noted.
  - Galvanized anchor pin, connecting pin and area shown on reinforcement bars B6, B7, B9, and B10 in accordance with AASHTO M232 after fabrication.
  - Embedded inserts may be used for lifting and handling. Submit details for the inserts for approval.



NO SCALE

U.S. DEPARTMENT OF TRANSPORTATION  
FEDERAL HIGHWAY ADMINISTRATION  
FEDERAL LANDS HIGHWAY

**METRIC STANDARD**

**CONCRETE BARRIER**

STANDARD APPROVED FOR USE 3/1996  
REVISED: 12/1998

STANDARD  
**M618-1**

20 NOV 2000 f:\standrow\metric\m61801.dgn