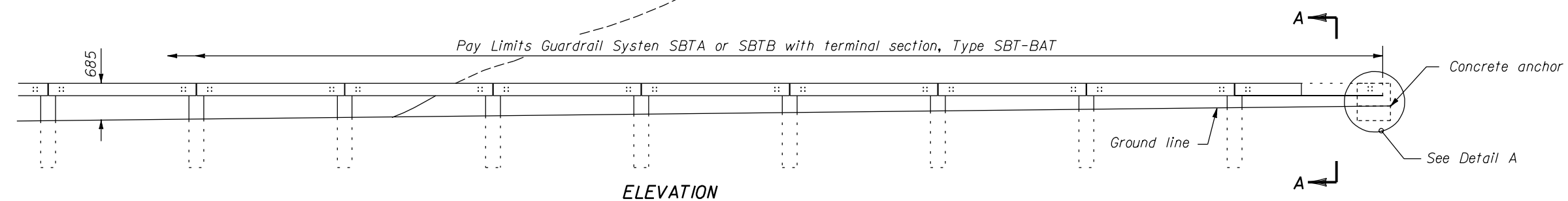


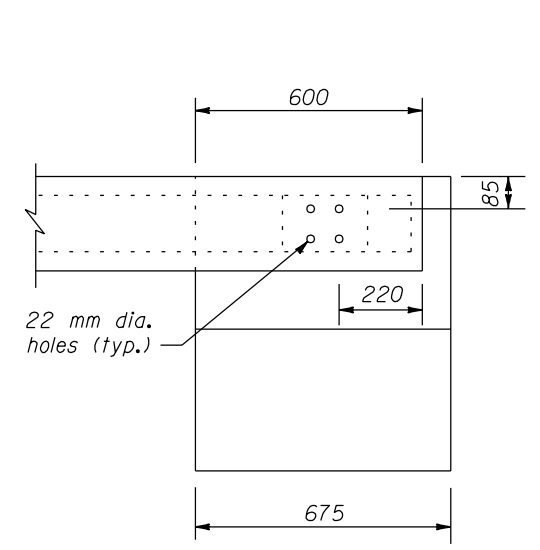
PLAN

- NOTE:**
1. Dimensions not labeled are in millimeters.
  2. See Standard M617-60, SBTA and SBTB for timber, structural steel, and hardware details.
  3. On the Type A, blocked-out guardrail, include the blocks in the terminal section, except on the concrete anchor. For the Type B, non-blocked-out guardrail, no blocks are included.
  4. Begin the cut flares at the nearest post to a transition point between fill and cut as directed by the CO.
  5. Extend the flare into the cut until a minimum 300 mm cover is obtained over the guardrail end.
  6. Furnish hardware in the metric sizes shown. Equivalent imperial sizes may be used when metric sizes are not available.



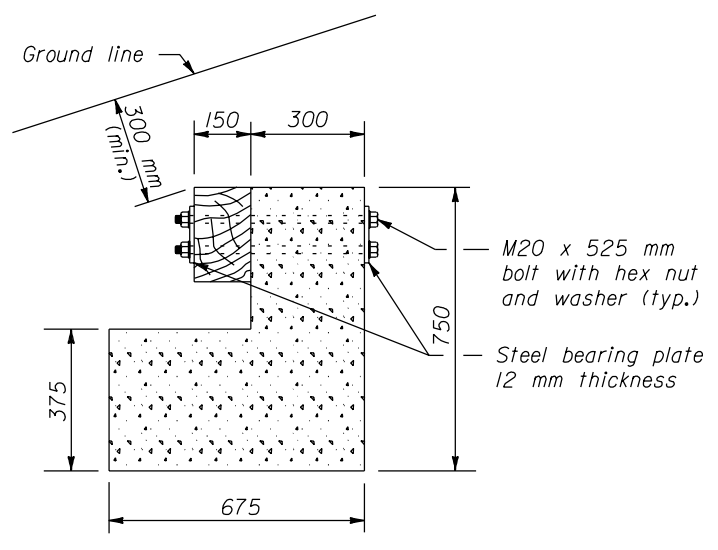
ELEVATION

APPROACH & DEPARTURE FLARE WITH BACK SLOPE ANCHOR TERMINAL (BAT)

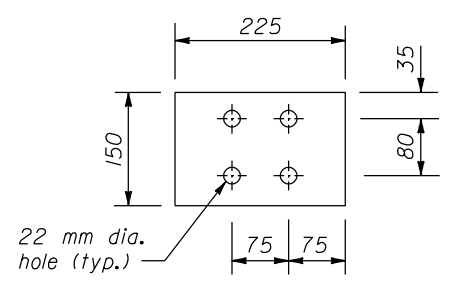


DETAIL A

CONCRETE ANCHOR



SECTION A-A



STEEL BEARING PLATE

Design Speed (km/h)	Shy line offset (m)	Flare rate inside shy line (a:b)	Flare rate outside shy line (a:b)
100	2.5	26:1	13:1
80	2.0	21:1	11:1
60	1.5	17:1	9:1
50 or less	1.0	13:1	7:1

U.S. DEPARTMENT OF TRANSPORTATION  
FEDERAL HIGHWAY ADMINISTRATION  
FEDERAL LANDS HIGHWAY

METRIC STANDARD

STEEL-BACKED TIMBER GUARDRAIL  
TERMINAL SECTION  
TYPE SBT-BAT

STANDARD APPROVED FOR USE 3/1996

REVISOR:

STANDARD  
M617-62

NO SCALE

22 NOV 2000 f:\standrow\metric\ms161762.dgn