

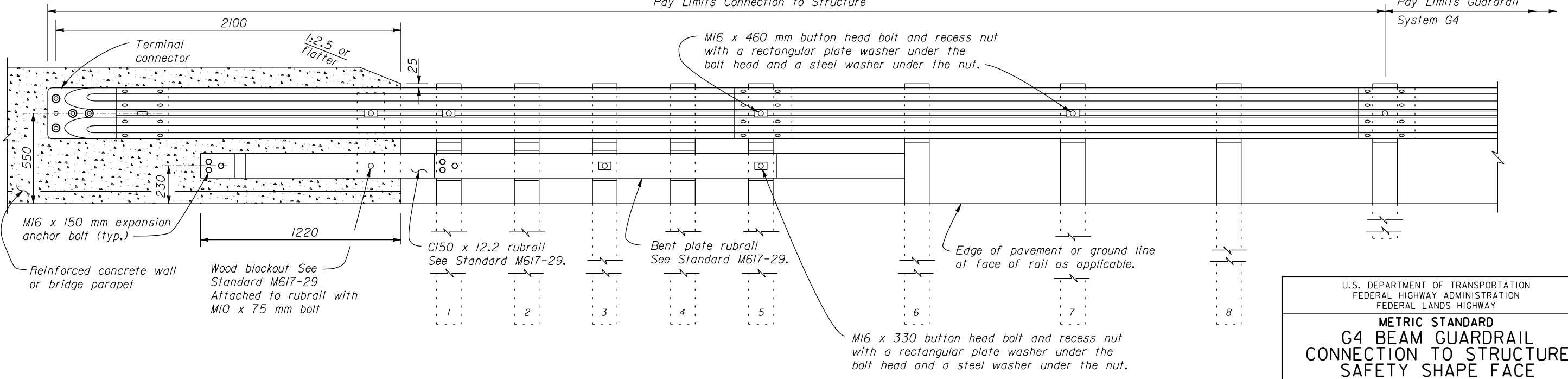
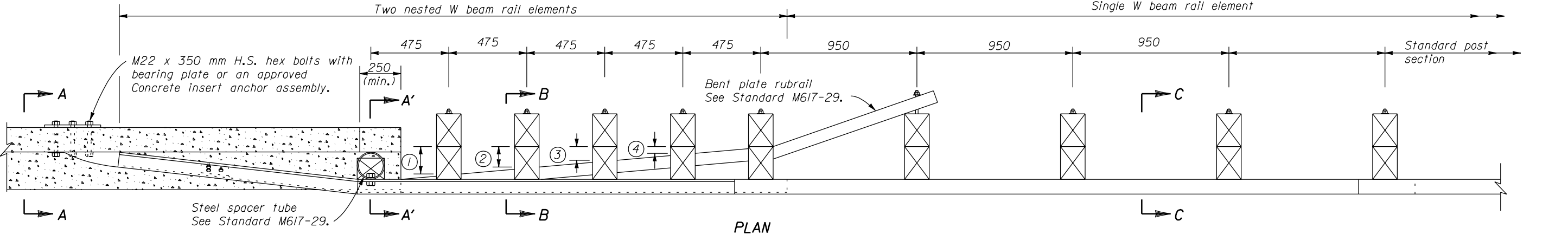
- NOTE:**
1. Dimensions not labeled are in millimeters.
  2. Center drill wood blocks for rubrail, located on posts 1 through 4. Secure blocks 2 and 4 with M16 carriage bolts.
  3. Center drill an additional hole on posts 1 through 5 to attach wood blocks to rubrail and/or the rubrail.
  4. Do not bolt W beam to posts and blocks at posts 2, 3, 4, 6 and 8. Bolt blocks directly to posts.
  5. Reinforced concrete wall or bridge parapet must be capable of developing a 265 kN pull out strength.
  6. Furnish hardware in the metric sizes shown. Equivalent imperial sizes may be used when metric sizes are not available.

Steel plate 16 mm thickness

**BEARING PLATE**

POST	THICKNESS
①	160
②	120
③	80
④	40

**WOOD BLOCKS FOR RUBRAIL**



**ELEVATION**

NO SCALE

U.S. DEPARTMENT OF TRANSPORTATION  
FEDERAL HIGHWAY ADMINISTRATION  
FEDERAL LANDS HIGHWAY

**METRIC STANDARD**  
**G4 BEAM GUARDRAIL**  
**CONNECTION TO STRUCTURE**  
**SAFETY SHAPE FACE**  
**WOOD POSTS**

STANDARD APPROVED FOR USE 3/1996  
REVISED: 1/1998

STANDARD  
**M617-27**

22 NOV 2000 f:\standrow\metric\m61727.dgn