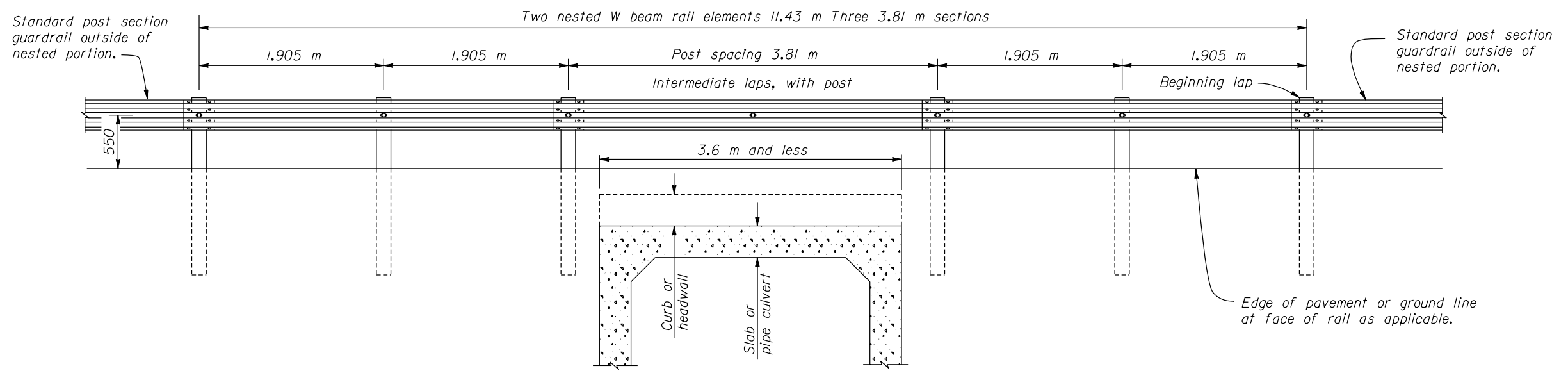
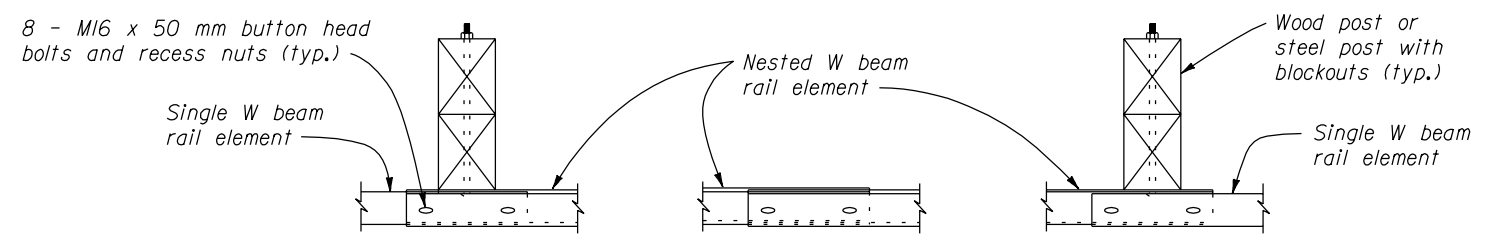


ELEVATION

- NOTE:**
1. Dimensions not labeled are in millimeters.
  2. 7.62 m rail lengths may be used to eliminate the intermediate lap without a post.



ELEVATION



ENDING LAP      INTERMEDIATE LAP WITHOUT POST      BEGINNING LAP

NO SCALE

U.S. DEPARTMENT OF TRANSPORTATION  
 FEDERAL HIGHWAY ADMINISTRATION  
 FEDERAL LANDS HIGHWAY

**METRIC STANDARD**

**G4 W BEAM GUARDRAIL  
 PLACEMENT AT MINOR  
 STRUCTURES AND CULVERTS**

STANDARD APPROVED FOR USE 3/1996  
 REVISED: 8/1997

STANDARD  
**M617-24**

f:\standrow\metric\mst61724.dgn 22 NOV 2000