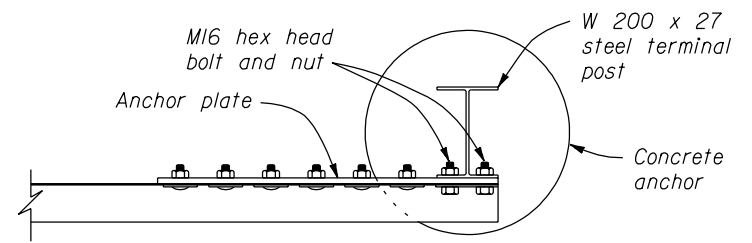
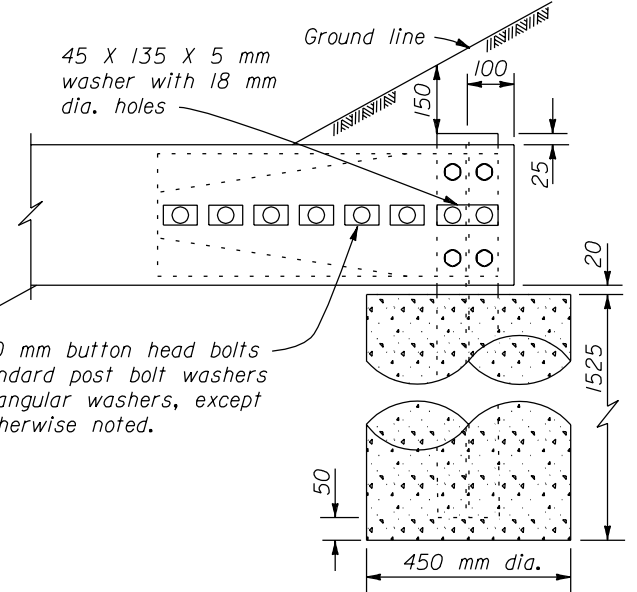


DETAIL A

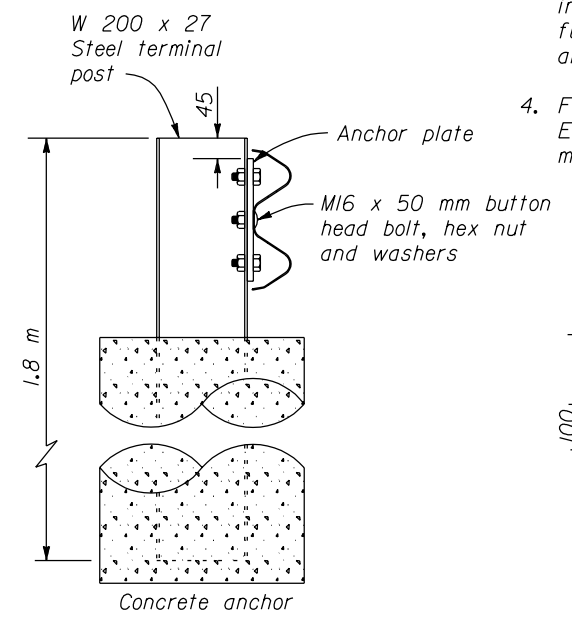
DESIGN SPEED km/h	a:b	Δ	Radius meters	X meters
110	15:1	3°48'51"	85.850	2.858
100	13:1	4°23'55"	74.442	2.859
90	12:1	4°45'49"	68.739	2.859
80	11:1	5°11'40"	63.037	2.859
70	10:1	5°42'38"	57.340	2.860
60	9:1	6°20'25"	51.645	2.860
50 or less	7:1	8°07'48"	40.276	2.862



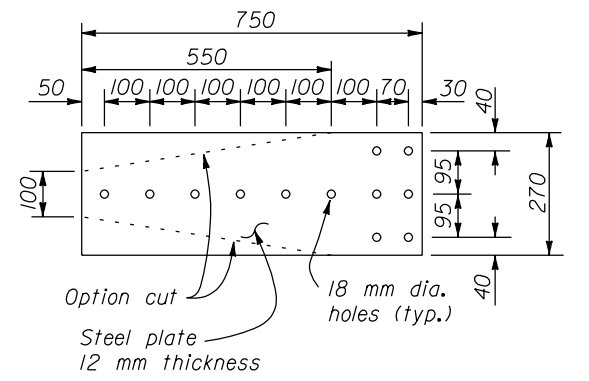
PLAN



ELEVATION

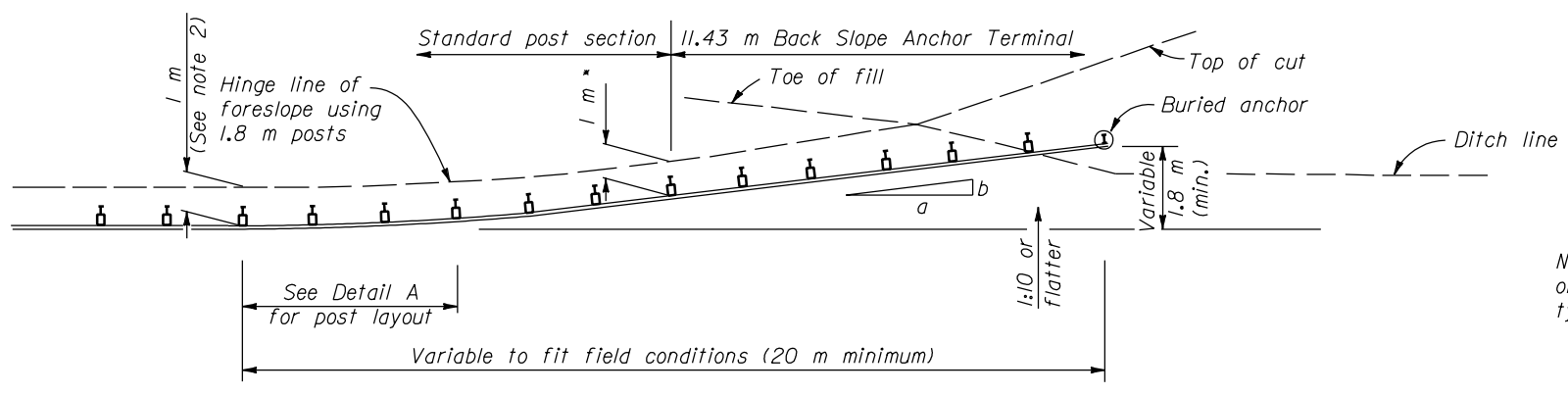


SIDE

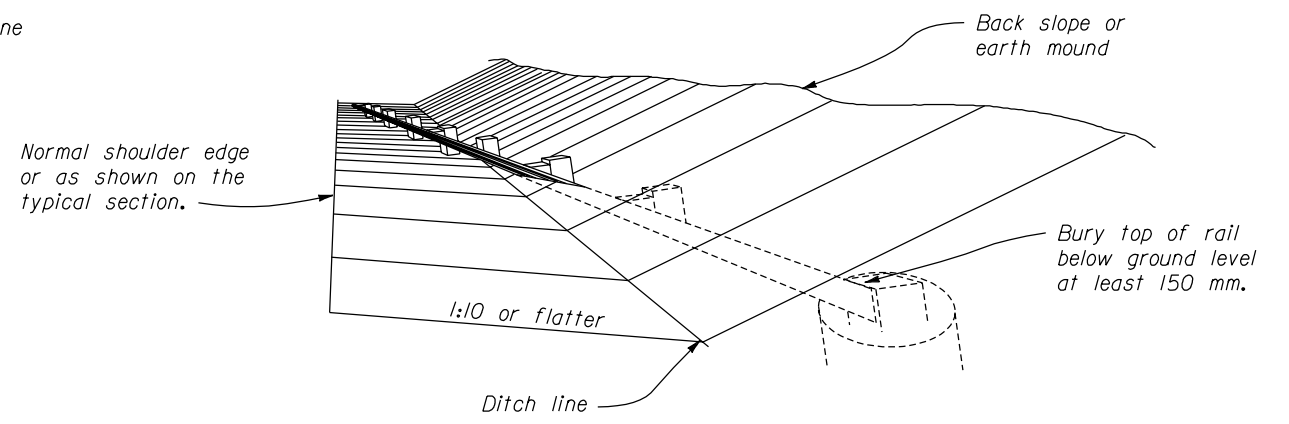


ANCHOR PLATE

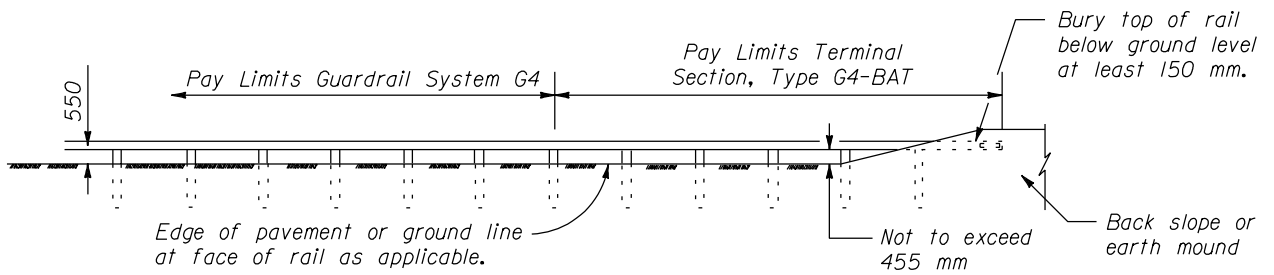
BACK SLOPE ANCHOR ASSEMBLY



PLAN

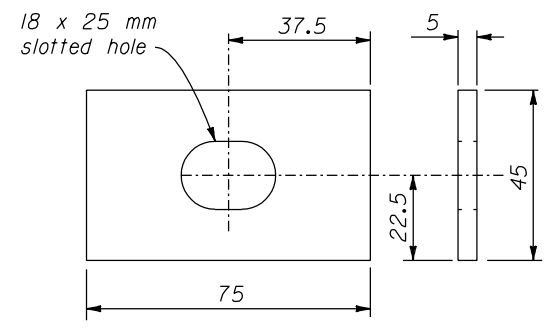


PERSPECTIVE VIEW



ELEVATION

APPROACH & DEPARTURE FLARE WITH BACK SLOPE ANCHOR TERMINAL



RECTANGULAR PLATE WASHER

NO SCALE

NOTE:

- All dimensions not labeled are in millimeters.
- See special contract requirements when 2.1 m or longer posts are specified.
- Dimensional tolerance not shown or implied are intended to be those consistent with the proper functioning of the part, including its appearance, and accepted manufacturing practices.
- Furnish hardware in the metric sizes shown. Equivalent imperial sizes may be used when metric sizes are not available.

U.S. DEPARTMENT OF TRANSPORTATION
FEDERAL HIGHWAY ADMINISTRATION
FEDERAL LANDS HIGHWAY

METRIC STANDARD
G4 W BEAM GUARDRAIL
BACK SLOPE ANCHOR TERMINAL
WOOD OR STEEL POSTS
TERMINAL SECTION, TYPE G4-BAT

STANDARD APPROVED FOR USE 3/1996
REVISED: 6/1997

STANDARD
M617-17