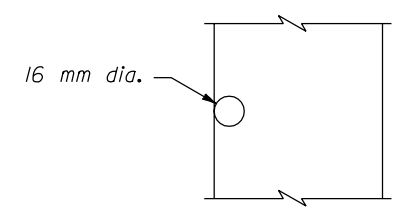


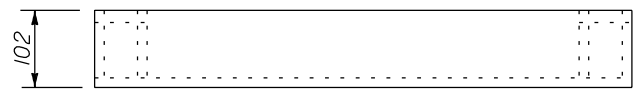
- NOTE:**
- Dimensions not labeled are in millimeters.
  - Hot dip galvanize all metal parts for frame and grate after fabrication.
  - Fabricate frame and grate from structural steel.
  - Furnish M20 x 120 x 200 mm anchor bolts with nuts to attach frame to inlet.
  - Cut holes in 89 x 12.7 mm bar as required to place 16 mm diameter rods.
  - Spot weld 16 mm diameter rods for frame and grate to 89 x 12.70 mm bars.
  - Furnish hardware in the metric sizes shown. Equivalent imperial sizes may be used when metric sizes are not available.

DETAIL B

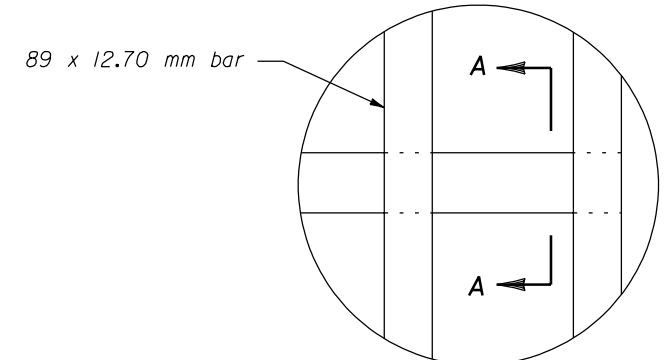
GRATE



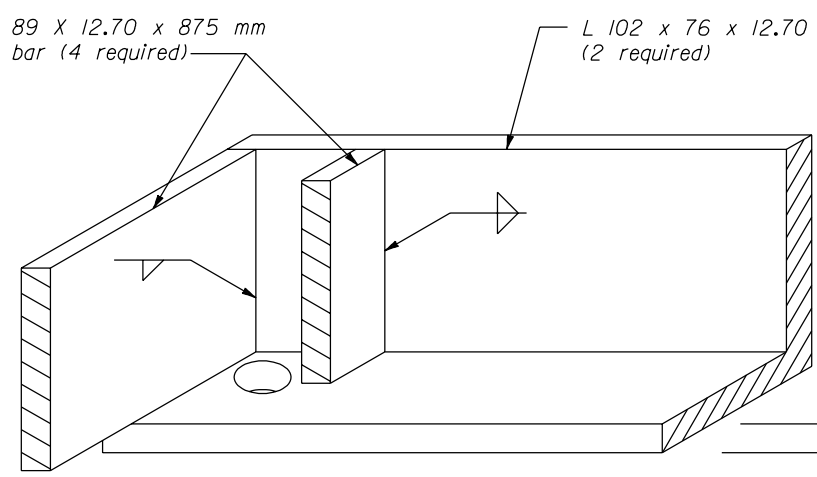
SECTION A-A



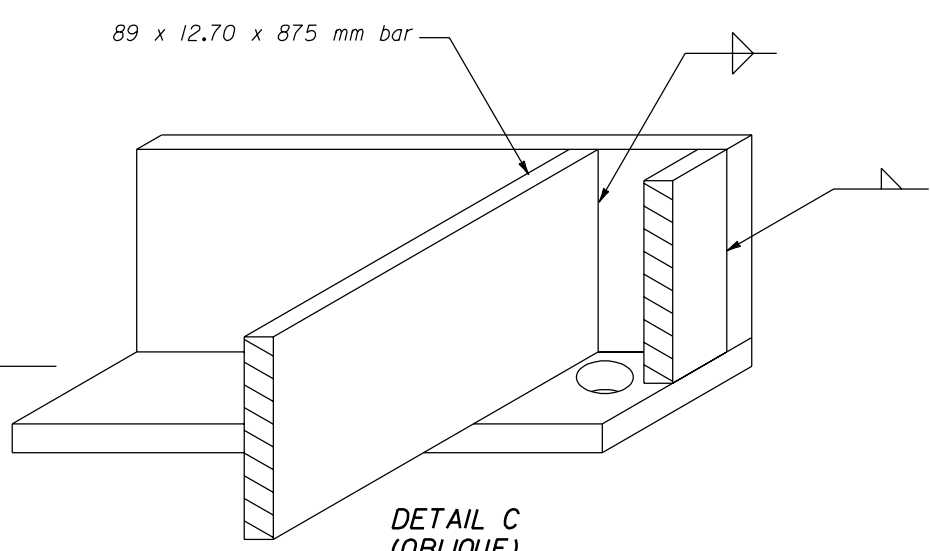
GRATE FRAME



DETAIL D



DETAIL A (OBLIQUE)



DETAIL C (OBLIQUE)

NO SCALE

U.S. DEPARTMENT OF TRANSPORTATION FEDERAL HIGHWAY ADMINISTRATION FEDERAL LANDS HIGHWAY	
METRIC STANDARD	
FRAME AND GRATE TYPE 5A	
STANDARD APPROVED FOR USE 3/1996	STANDARD
REVISED:	M604-6