

# NAVESINK LIGHT STATION

United States Department of the Interior, National Park Service

# FIGURES

National Register of Historic Places Registration Form



Figure 1: Navesink Light Station, Highlands, Monmouth County, New Jersey

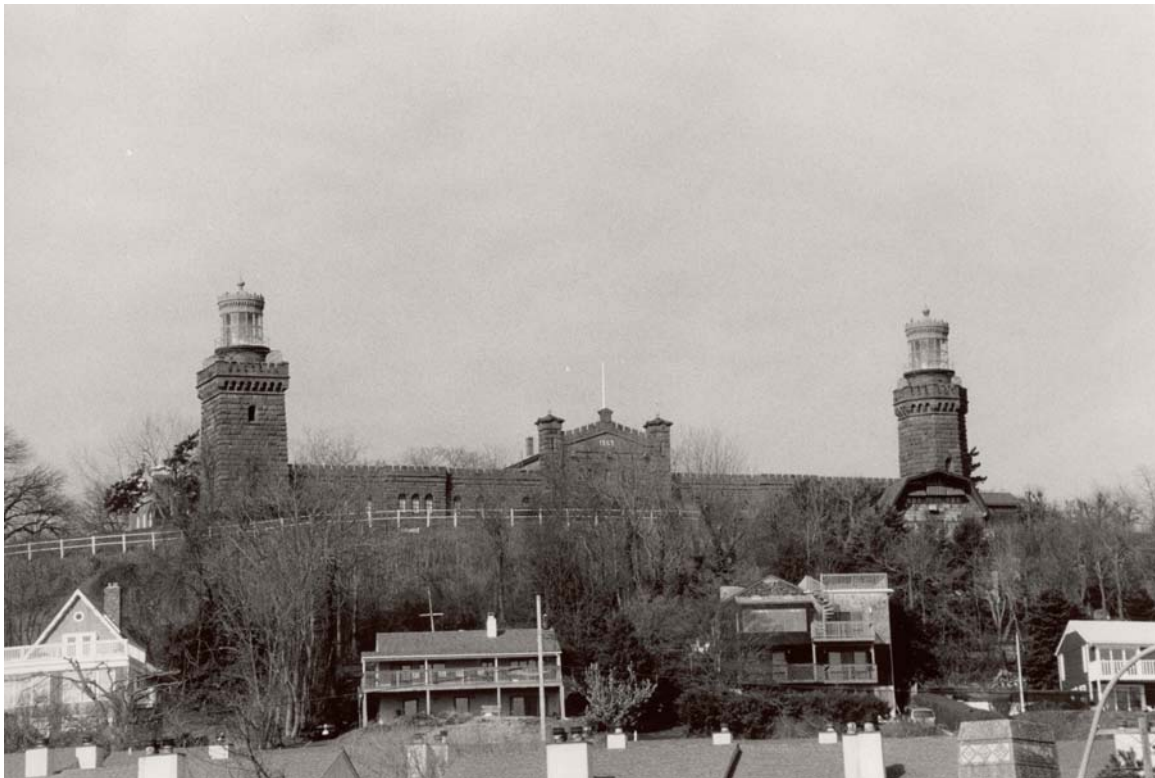


Figure 2: Navesink Light Station.

**NAVESINK LIGHT STATION**

**FIGURES**

United States Department of the Interior, National Park Service

National Register of Historic Places Registration Form



Figure 3: Navesink Light Station Keepers' Quarters (east elevation)

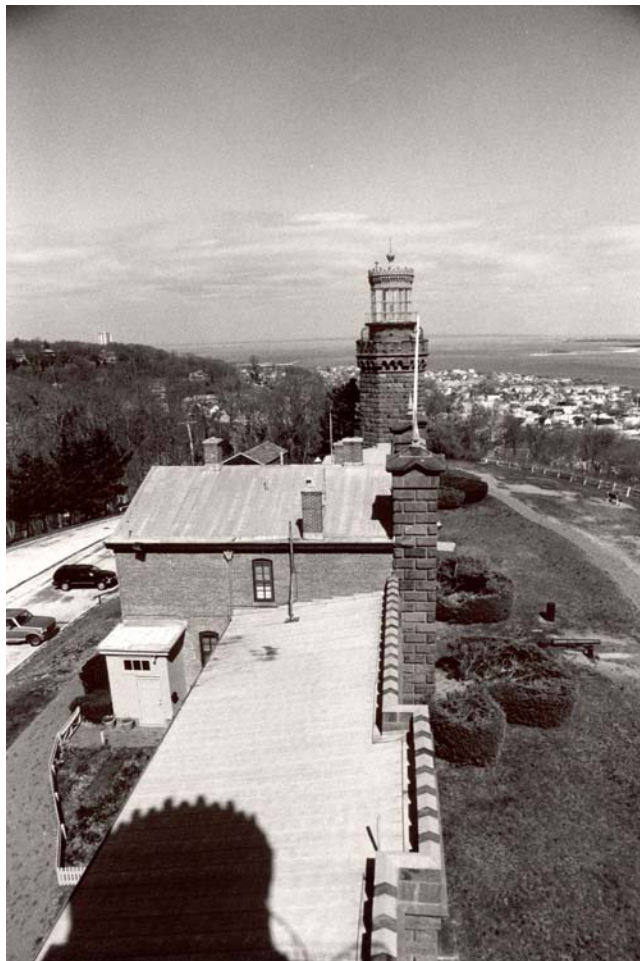


Figure 4: View from south tower looking north.

**NAVESINK LIGHT STATION**

**FIGURES**

United States Department of the Interior, National Park Service

National Register of Historic Places Registration Form

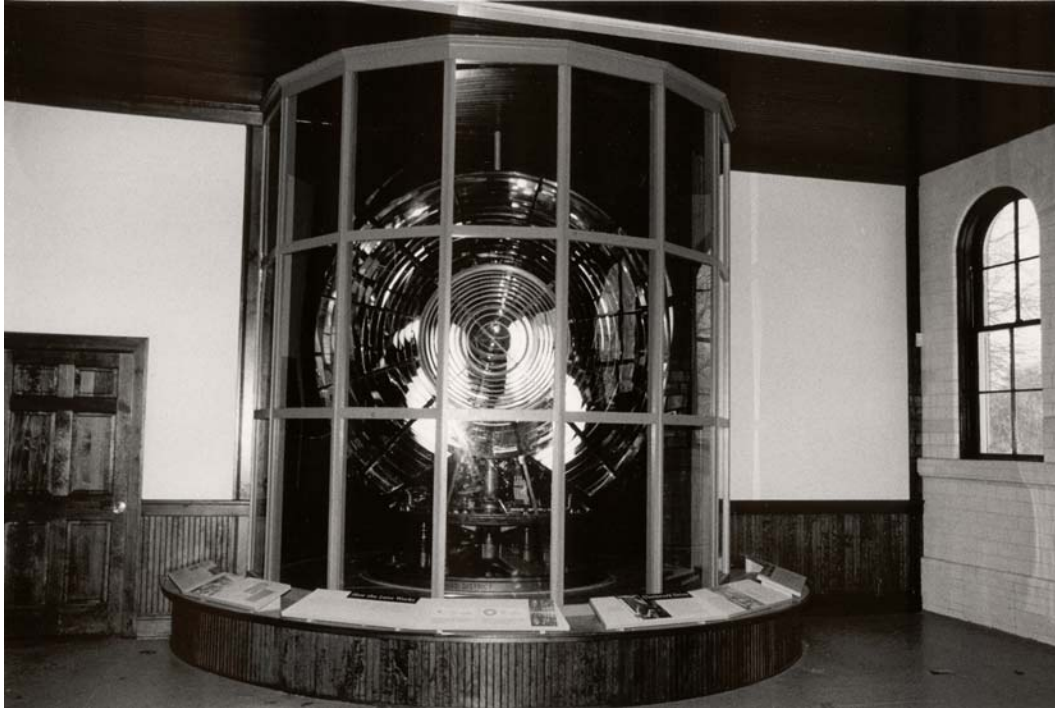


Figure5: 1898 second-order bivalve lens, which once occupied the lantern room of the south tower, on display in the Power House.

# NAVESINK LIGHT STATION

United States Department of the Interior, National Park Service

# FIGURES

National Register of Historic Places Registration Form

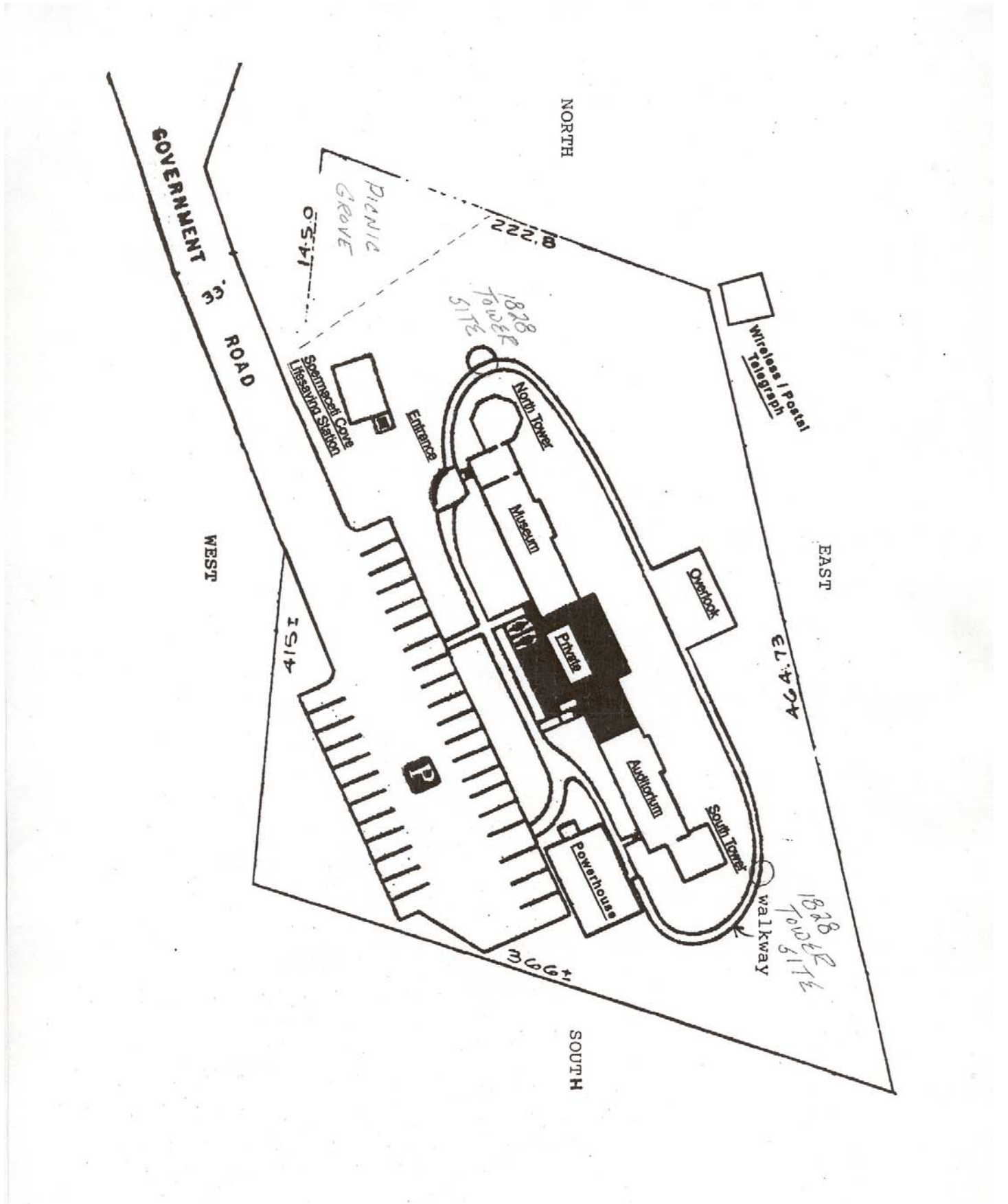


Figure 6: Current site plan of Navesink Light Station.

# NAVESINK LIGHT STATION

United States Department of the Interior, National Park Service

# FIGURES

National Register of Historic Places Registration Form

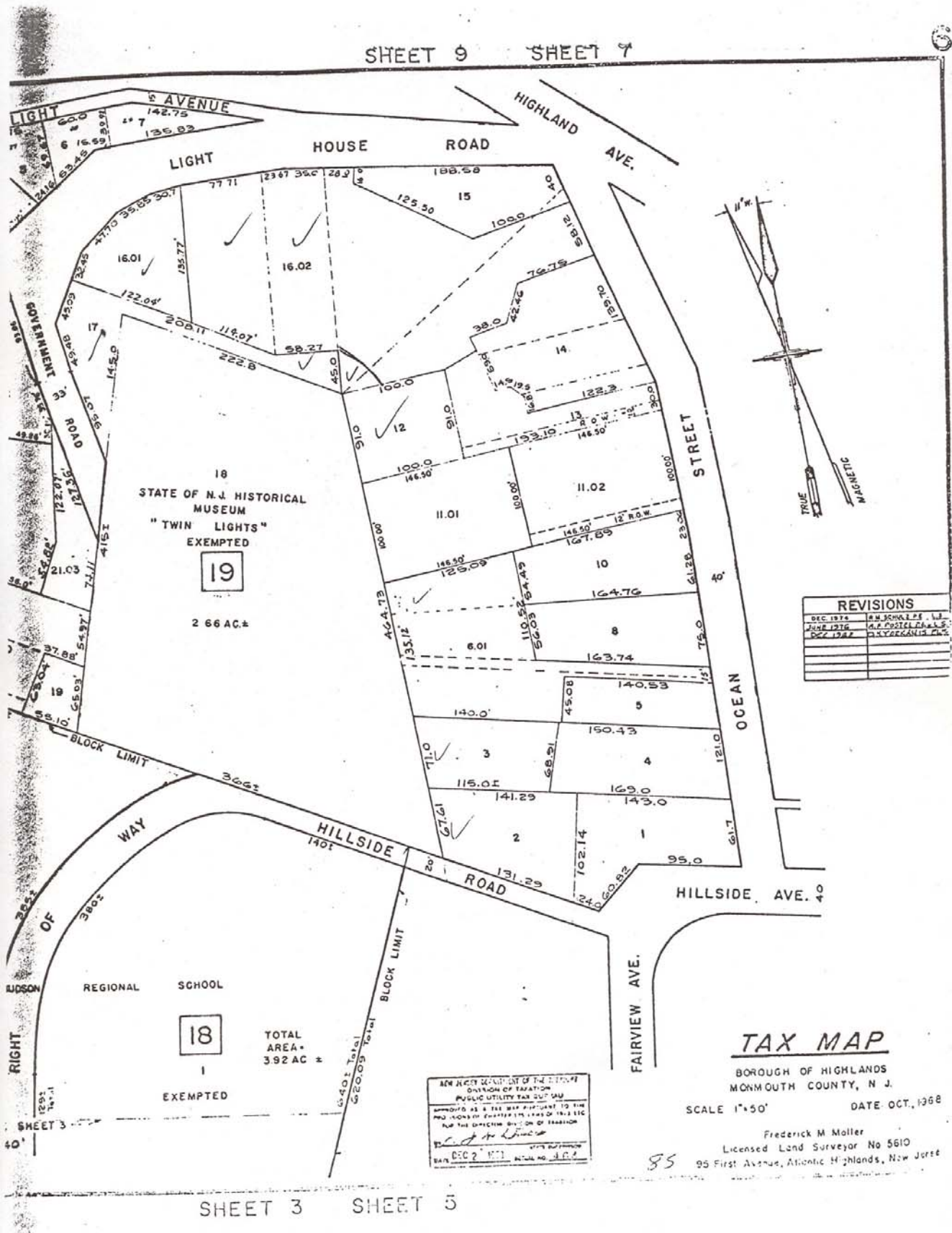


Figure 7: Boundary description for Navesink Light Station.

# NAVESINK LIGHT STATION

United States Department of the Interior, National Park Service

# FIGURES

National Register of Historic Places Registration Form

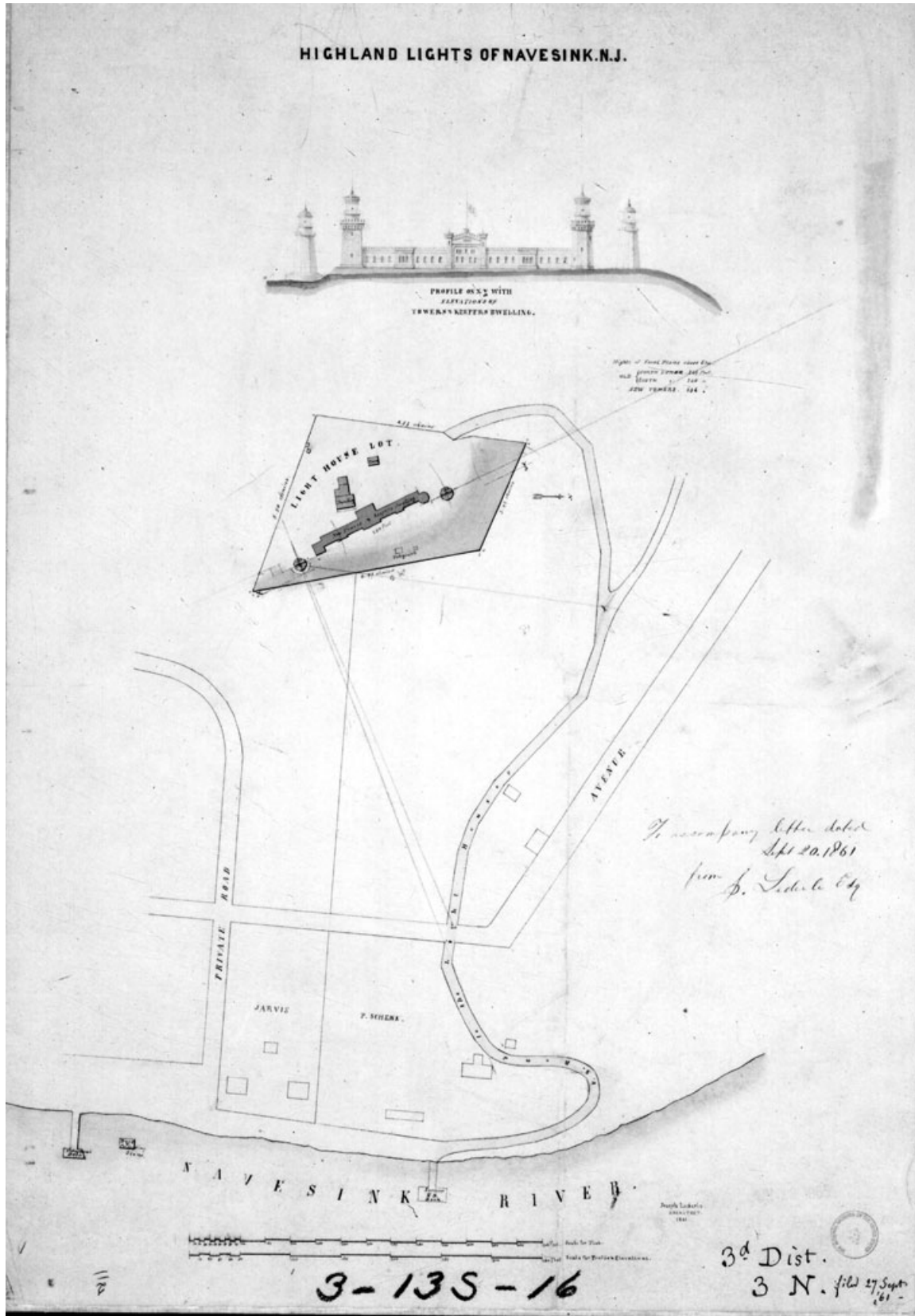


Figure 8: 1861 site map for Navesink Light Station, Record Group 26, National Archives.

# NAVESINK LIGHT STATION

# FIGURES

United States Department of the Interior, National Park Service

National Register of Historic Places Registration Form

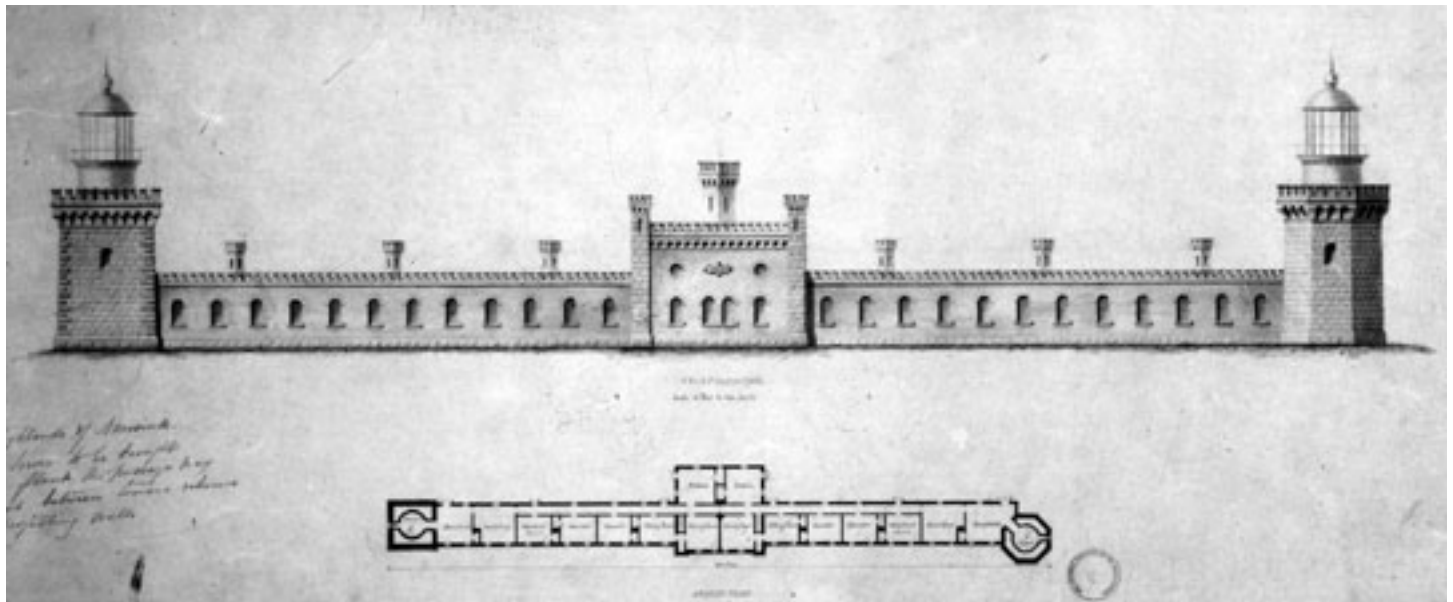


Figure 9: Elevation drawing of Navesink Light Station, circa 1861, Record Group 26, National Archives.

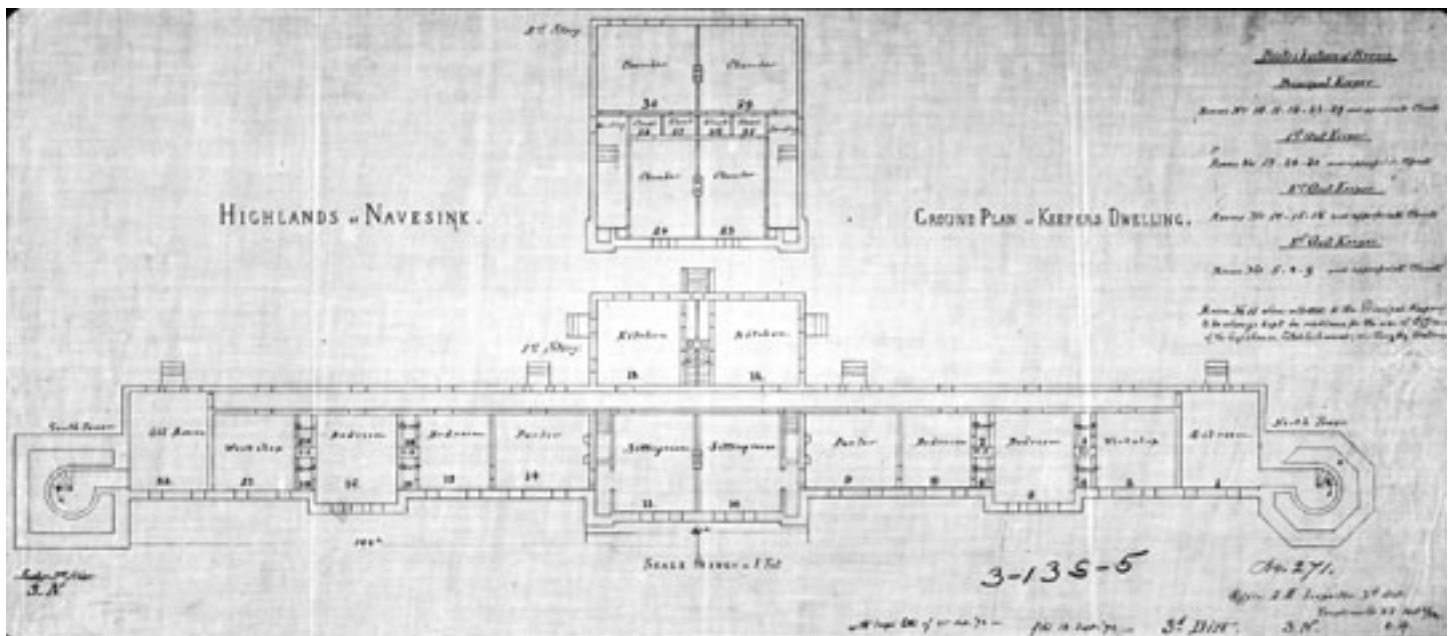


Figure 10: Ground plan of keepers dwelling, circa 1861, Record Group 26, National Archives.

# NAVESINK LIGHT STATION

United States Department of the Interior, National Park Service

# FIGURES

National Register of Historic Places Registration Form

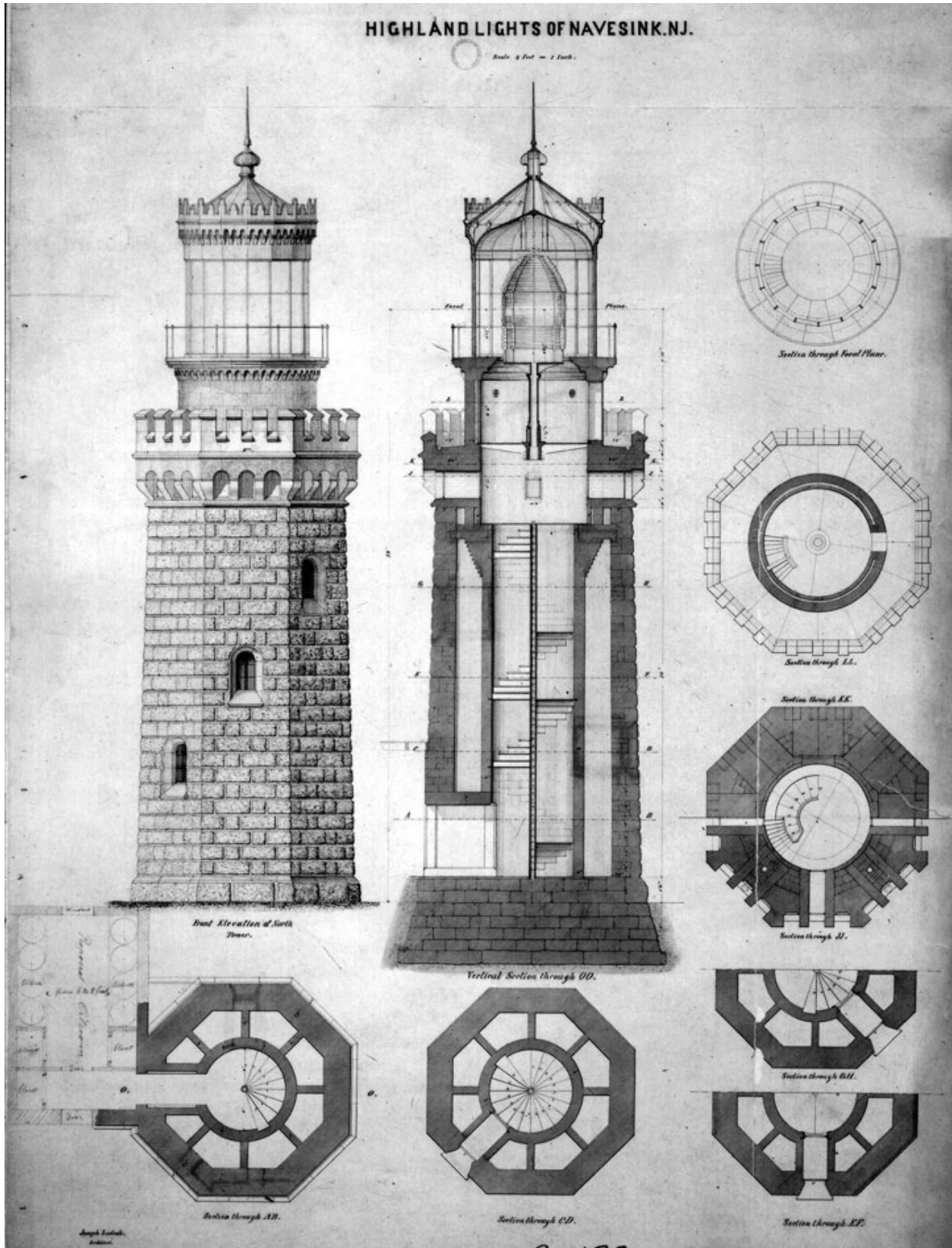


Figure 11: Plan for the north tower at Navesink Light Station, circa 1861, Record Group 26, National Archives.



**NAVESINK LIGHT STATION**

United States Department of the Interior, National Park Service

**FIGURES**

National Register of Historic Places Registration Form



Figure 12: Navesink Light Station keepers' quarters and north tower, circa 1890s, Record Group 26, National Archives.

# NAVESINK LIGHT STATION

United States Department of the Interior, National Park Service

# FIGURES

National Register of Historic Places Registration Form



Figure 13: Bird's-eye-view of Navesink Light Station, circa 1940s, USCG Historian's Office.

# NAVESINK LIGHT STATION

# FIGURES

United States Department of the Interior, National Park Service

National Register of Historic Places Registration Form

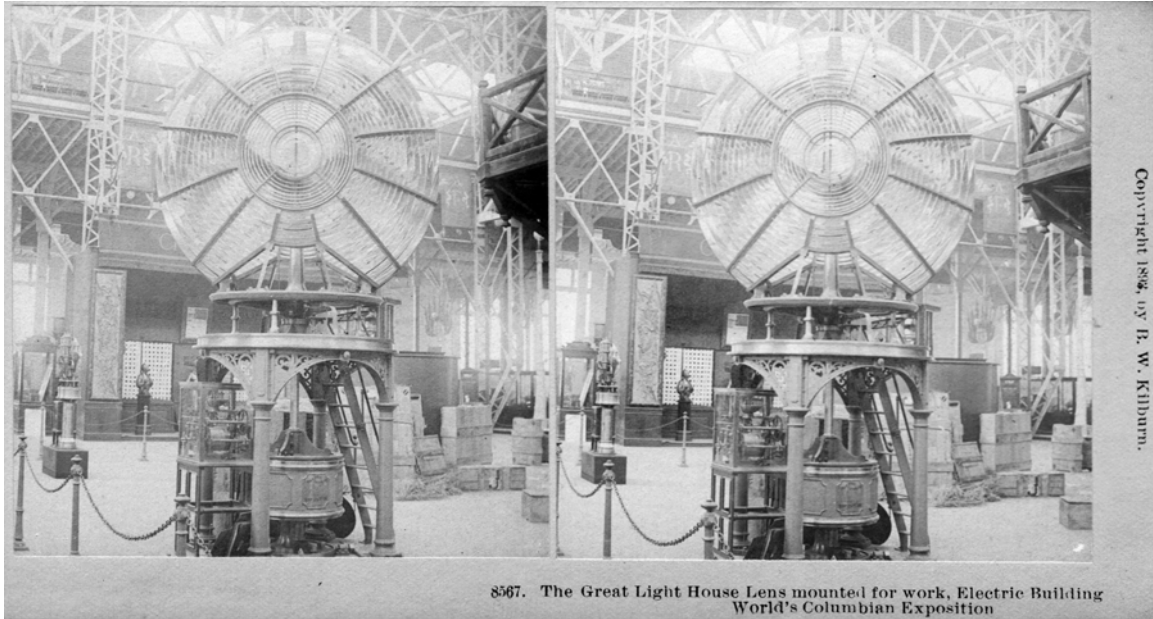


Figure 14: Bi-valve lens on display at the World's Columbian Exposition; image courtesy of the Twin Lights Historical Society.



**9,000,000 CANDLEPOWER: THE LENS AT NAVESINK**  
 Keeper Murphy L. Rockette of the Navesink Light station at the land end of Sandy Hook, New Jersey, inspects his bulbs, looks for dust flecks on his prisms. His lens, a bivalve worth \$20,000, is turned six times each minute in a pot of mercury by electric current supplied by the Jersey Central Power & Light Co.

Figure 15: Bi-valve lens installed in south tower; image courtesy of Twin Lights Historical Society (from *Fortune*, January 1937, Vol. XV, No. 1)

# NAVESINK LIGHT STATION

United States Department of the Interior, National Park Service

# FIGURES

National Register of Historic Places Registration Form



Figure 16: Historic sketch of Navesink Light Station depicting 1862 north tower and foundation of 1828 north tower; also in sketch is semaphore tower.



Figure 17: Historic postcard of Navesink Light Station showing 1898 power house (replaced in 1909 with current building); image courtesy of Twin Lights Historical Society.