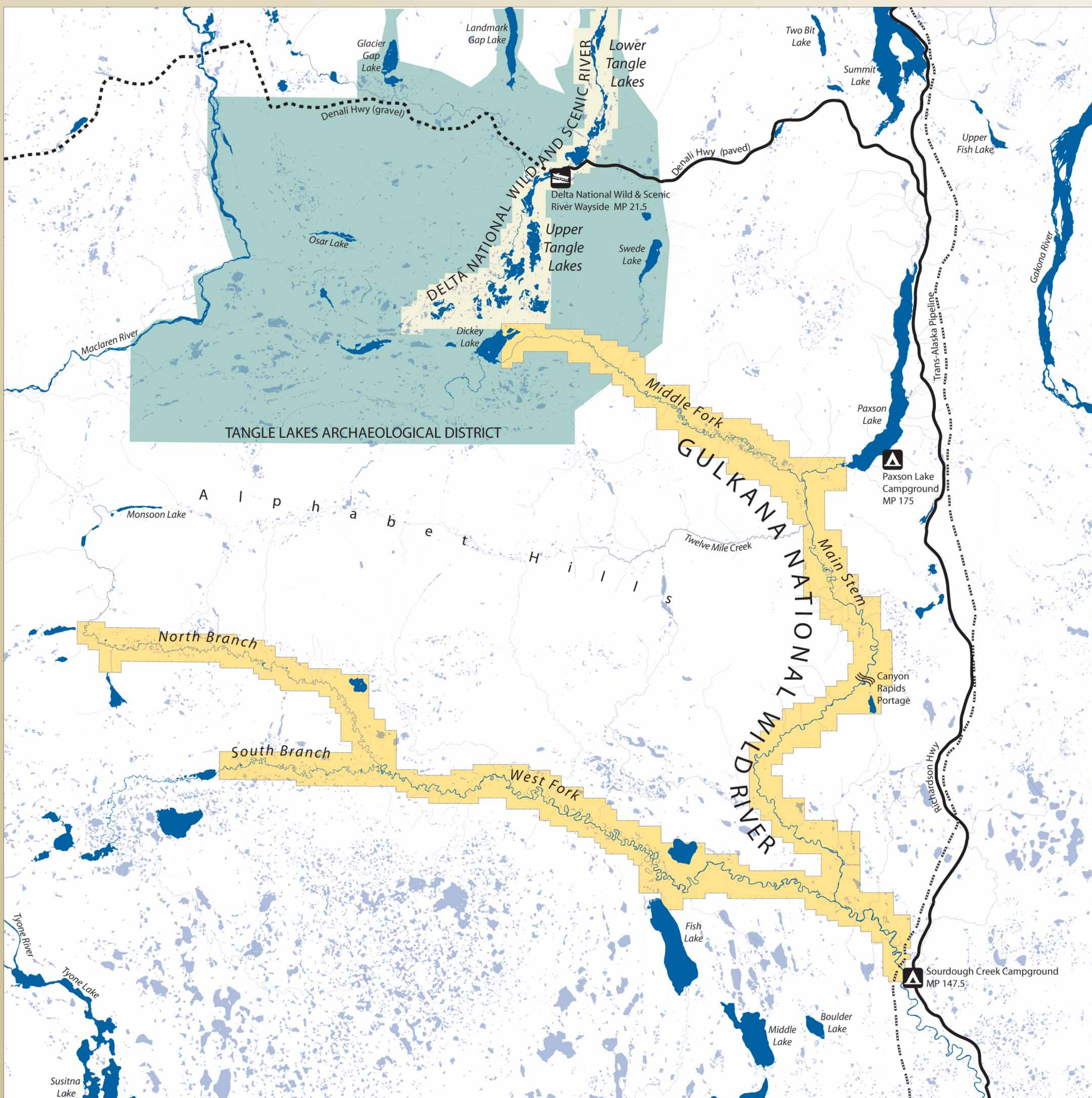




welcome to the

Gulkana National Wild River



Main Stem Float Highlights



Put-in is located at the Paxson Lake Campground Boat Launch.



It takes 3 to 4 hours to row to the outlet of Paxson Lake, depending on wind.



There are Class I-II rapids for approximately 2.5 river miles.



The confluence with the Middle Fork is at river mile 2.8.



A 1/2 mile portage around Canyon Rapids is marked with signs on river left at river mile 17.5. Depending on craft, water level and ability you may have to portage gear or entire craft. Recommend scouting before running rapids.



Class II-III rapids begin after Canyon Rapids and last for approximately 8 river miles.



Encounters with power boats can be expected as early as river mile 35, depending on water levels.



Confluence with the West Fork is at river mile 37.



Take-out is located at the Sourdough Creek Campground at river mile 45.5.



A typical float trip on the Main Stem takes 3 to 4 days. We recommend using the Floater's Guide that is available to identify river features and to find campsites that are appropriate for your group size.

Gulkana Float Descriptions

Float	Craft	Put-in	Take-out	River Miles Floated	Average Trip Length	Portage	Rapids
Main Stem	raft, canoe, cata-raft, kayak	Paxson Lake Campground MP 175 Richardson Hwy	Sourdough Creek Campground MP 147.5 Richardson Hwy	47	3 to 4 days	1/2 mile portage at Canyon Rapids for some craft, abilities, or comfort levels	Majority of river is Class III or IV with short stretches of Class III or IV
Middle Fork	canoe, kayak	Delta Wayside MP 21.5 Denali Hwy through Upper Tangle Lakes or Dickey Lake (float plane)	Sourdough Creek Campground MP 147.5 Richardson Hwy	72	6 to 7 days	Several possible portages if accessed through Upper Tangle Lakes. Lining may be required at low water levels, Canyon Rapids, portage on Main Stem	Majority of river is Class III or IV with short stretches of Class III or IV
West Fork (North and South Branches)	canoe, kayak	North Branch: float plane to unnamed lake South Branch: float plane or multiple portages from Lake Louise/Tyone River	Sourdough Creek Campground MP 147.5 Richardson Hwy	110	7 to 14 days	Several portages to reach the South Branch from Tyone River. At low water levels lining may be required at places on both branches	Class I to III although remote nature of trip adds to the challenge

For a more detailed description of these trips, see the Gulkana National Wild River Brochure

Emergency Contact Information

Alaska State Troopers, Glennallen (907) 822-3263 or 911

Bureau of Land Management
Glennallen Field Office
PO Box 147
Mile 186.5 Glenn Highway
Glennallen, AK 99588
(907) 822-3217

BLM Rangers, Glennallen (907) 822-3217 (week days only)

Fish and Game Regulation Information



AK Department of Fish & Game - Glennallen Office
PO Box 47, Mile 186 Glenn Highway
Glennallen, AK 99588
(907) 822-3309

Pre-Float Reminders

Campsite Selection

Use the Gulkana River Floater's Guide to help select campsites that are appropriate for your group size.



Green sites are suitable for 1 to 2 tents. They may be harder to see from the river, but are usually more secluded and offer the most privacy.



Orange sites are suitable for 3 to 4 tents. They have more room for camping gear and most have an established fire ring.



Purple sites are suitable for 5 to 6 tents. They are the most visible from the river and are appropriate for larger groups, providing the most room for camping gear.

Group Size

A smaller group is more likely to see wildlife, has an easier time finding a campsite to accommodate its size, and has less impact on the fragile riverbank vegetation and wilderness experience of other users.

In order to protect campsites and maintain the wild character of the Gulkana River, group size is limited to 12 people per group.

Portable Toilets

Using a portable river toilet system will eliminate the unpleasant experience of rolling into camp and having to deal with the possibility of human waste or toilet paper in the bushes.

A boater dump station is located at Sourdough Creek Campground for your convenience.

Garbage

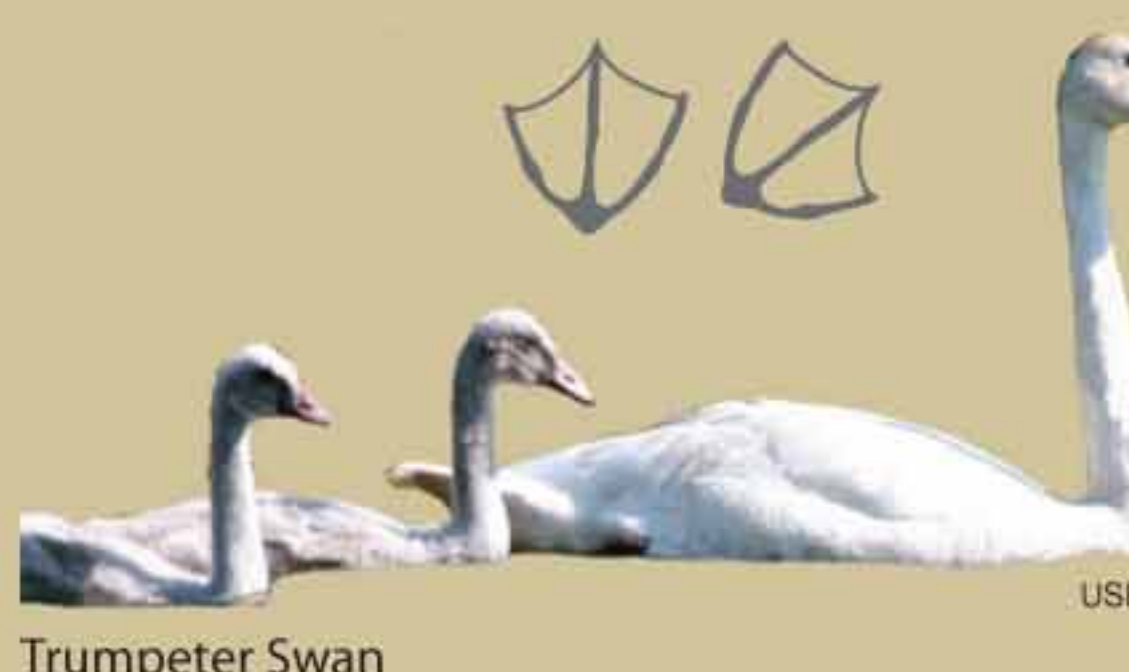
Small fires are not as hot as larger ones and do not allow for trash and aluminum to burn. The result is partially burned cans and garbage left for the next river user to find.

Use a fire pan and pack out all garbage to reduce the amount of litter on the banks of the Gulkana River. Keep food and trash contained and away from tents and gear to avoid attracting bears.



Prohibited within the Gulkana National Wild River Corridor:

- fireworks
- recreational shooting
- chainsaws



Common fish species found in the Gulkana River



Sockeye (Red) Salmon



Arctic Grayling



Chinook (King) Salmon



Rainbow Trout

Refer to Alaska Department of Fish and Game regulations before fishing or hunting.