

Table 5.1
Cancer of the Cervix Uteri (Invasive)

Trends in SEER Incidence^{ab} and U.S. Mortality^c Using the Joinpoint Regression Program,
1975-2006 With up to Four Joinpoints, 1992-2006 With up to Two Joinpoints,
All Ages by Race/Ethnicity

	<u>Joinpoint Trend 1</u>		<u>Joinpoint Trend 2</u>		<u>Joinpoint Trend 3</u>		<u>Joinpoint Trend 4</u>		<u>Joinpoint Trend 5</u>		<u>AAPC^d</u>	
	Years	APC	Years	APC	Years	APC	Years	APC	Years	APC	1997-2006	2002-2006
<u>SEER 9 Delay-Adjusted Incidence^a, 1975-2006</u>												
All Races	1975-1981	-4.6*	1981-1996	-1.1*	1996-2006	-3.5*					-3.5*	-3.5*
White	1975-1982	-4.8*	1982-1990	0.4	1990-2006	-2.5*					-2.5*	-2.5*
Black	1975-2006	-3.8*									-3.8*	-3.8*
<u>SEER 13 Delay-Adjusted Incidence^b, 1992-2006</u>												
All Races	1992-2006	-2.8*									-2.8*	-2.8*
White	1992-2006	-2.3*									-2.3*	-2.3*
Black	1992-1996	-0.4	1996-2006	-5.1*							-5.1*	-5.1*
<u>SEER 9 Observed Incidence^a, 1975-2006</u>												
All Races	1975-1981	-4.6*	1981-1996	-1.1*	1996-2006	-3.6*					-3.6*	-3.6*
White	1975-1982	-4.8*	1982-1990	0.4	1990-2006	-2.6*					-2.6*	-2.6*
Black	1975-2006	-3.8*									-3.8*	-3.8*
<u>SEER 13 Observed Incidence^b, 1992-2006</u>												
All Races	1992-2006	-2.9*									-2.9*	-2.9*
White	1992-2006	-2.4*									-2.4*	-2.4*
White NH ^{ef}	1992-2006	-2.5*									-2.5*	-2.5*
Black	1992-1996	-0.3	1996-2006	-5.2*							-5.2*	-5.2*
Black NH ^{ef}	1992-1996	0.0	1996-2006	-5.3*							-5.3*	-5.3*
API ^e	1992-2006	-4.8*									-4.8*	-4.8*
AI/AN ^{eg}	1992-2006	-1.6									-1.6	-1.6
Hispanic ^e	1992-2006	-3.8*									-3.8*	-3.8*
<u>U.S. Cancer Mortality^c, 1975-2006</u>												
All Races												
White												
Black												
<u>U.S. Cancer Mortality^c, 1992-2006</u>												
All Races												
White												
White NH ^{ef}												
Black												
Black NH ^{ef}												
API ^e												
AI/AN ^{eg}												
Hispanic ^e												

Joinpoint Regression Program Version 3.3.1, April 2008, National Cancer Institute. (<http://srab.cancer.gov/joinpoint/>).

The APC is the Annual Percent Change based on rates age-adjusted to the 2000 US Std Population (19 age groups - Census P25-1130).

^a Trends are from the SEER 9 areas (San Francisco, Connecticut, Detroit, Hawaii, Iowa, New Mexico, Seattle, Utah, and Atlanta).

^b Trends are from the SEER 13 areas (SEER 9 Areas, Los Angeles, San Jose-Monterey, Rural Georgia, and the Alaska Native Registry).

^c Trends are from US Mortality Files, National Center for Health Statistics, Centers for Disease Control and Prevention.

^d The AAPC is the Average Annual Percent Change and is based on the APCs calculated by Joinpoint.

^e API - Asian/Pacific Islander, AI/AN - American Indian/Alaska Native, NH - Non-Hispanic

^f Hispanic and Non-Hispanic are not mutually exclusive from whites, blacks, Asian/Pacific Islanders, and American Indians/Alaska

Natives. Incidence data for Hispanics and Non-Hispanics are based on NHIA and exclude cases from the Alaska Native Registry.

The Hispanic and Non-Hispanic mortality trends exclude deaths from CT, ME, MD, MN, NH, NY, ND, OK and VT.

^g Data for American Indian/Alaska Native are based on the CHSDA (Contract Health Service Delivery Area) counties.

* The APC/AAPC is significantly different from zero ($p < .05$).

- Joinpoint regression line analysis could not be performed on data series.

Table 5.2
Cancer of the Cervix Uteri (Invasive)

Trends in SEER Incidence^{ab} and U.S. Mortality^c Using the Joinpoint Regression Program,
1975-2006 With up to Four Joinpoints, 1992-2006 With up to Two Joinpoints,
Ages <50 by Race/Ethnicity

	<u>Joinpoint Trend 1</u>		<u>Joinpoint Trend 2</u>		<u>Joinpoint Trend 3</u>		<u>Joinpoint Trend 4</u>		<u>Joinpoint Trend 5</u>		<u>AAPC^d</u>	
	Years	APC	Years	APC	Years	APC	Years	APC	Years	APC	1997-2006	2002-2006
<u>SEER 9 Delay-Adjusted Incidence^a, 1975-2006</u>												
All Races	1975-1982	-3.9*	1982-1990	0.9	1990-2006	-2.3*					-2.3*	-2.3*
White	1975-1982	-4.0*	1982-1989	2.1	1989-2006	-1.9*					-1.9*	-1.9*
Black	1975-2006	-3.4*									-3.4*	-3.4*
<u>SEER 13 Delay-Adjusted Incidence^b, 1992-2006</u>												
All Races	1992-2006	-2.4*									-2.4*	-2.4*
White	1992-2006	-2.0*									-2.0*	-2.0*
Black	1992-2006	-4.2*									-4.2*	-4.2*
<u>SEER 9 Observed Incidence^a, 1975-2006</u>												
All Races	1975-1982	-3.9*	1982-1990	0.9	1990-2006	-2.4*					-2.4*	-2.4*
White	1975-1982	-4.0*	1982-1989	2.2	1989-2006	-2.1*					-2.1*	-2.1*
Black	1975-2006	-3.4*									-3.4*	-3.4*
<u>SEER 13 Observed Incidence^b, 1992-2006</u>												
All Races	1992-2006	-2.5*									-2.5*	-2.5*
White	1992-2006	-2.2*									-2.2*	-2.2*
White NH ^{ef}	1992-2006	-2.0*									-2.0*	-2.0*
Black	1992-2006	-4.3*									-4.3*	-4.3*
Black NH ^{ef}	1992-2006	-4.4*									-4.4*	-4.4*
API ^e	1992-2006	-2.4*									-2.4*	-2.4*
AI/AN ^{eg}	1992-2006	-0.4									-0.4	-0.4
Hispanic ^e	1992-2006	-3.8*									-3.8*	-3.8*
<u>U.S. Cancer Mortality^c, 1975-2006</u>												
All Races												
White												
Black												
<u>U.S. Cancer Mortality^c, 1992-2006</u>												
All Races												
White												
White NH ^{ef}												
Black												
Black NH ^{ef}												
API ^e												
AI/AN ^{eg}												
Hispanic ^e												

Joinpoint Regression Program Version 3.3.1, April 2008, National Cancer Institute. (<http://srab.cancer.gov/joinpoint/>).

The APC is the Annual Percent Change based on rates age-adjusted to the 2000 US Std Population (19 age groups - Census P25-1130).

^a Trends are from the SEER 9 areas (San Francisco, Connecticut, Detroit, Hawaii, Iowa, New Mexico, Seattle, Utah, and Atlanta).

^b Trends are from the SEER 13 areas (SEER 9 Areas, Los Angeles, San Jose-Monterey, Rural Georgia, and the Alaska Native Registry).

^c Trends are from US Mortality Files, National Center for Health Statistics, Centers for Disease Control and Prevention.

^d The AAPC is the Average Annual Percent Change and is based on the APCs calculated by Joinpoint.

^e API - Asian/Pacific Islander, AI/AN - American Indian/Alaska Native, NH - Non-Hispanic

^f Hispanic and Non-Hispanic are not mutually exclusive from whites, blacks, Asian/Pacific Islanders, and American Indians/Alaska

Natives. Incidence data for Hispanics and Non-Hispanics are based on NHIA and exclude cases from the Alaska Native Registry.

The Hispanic and Non-Hispanic mortality trends exclude deaths from CT, ME, MD, MN, NH, NY, ND, OK and VT.

^g Data for American Indian/Alaska Native are based on the CHSDA (Contract Health Service Delivery Area) counties.

* The APC/AAPC is significantly different from zero (p<.05).

- Joinpoint regression line analysis could not be performed on data series.

Table 5.3
Cancer of the Cervix Uteri (Invasive)

Trends in SEER Incidence^{ab} and U.S. Mortality^c Using the Joinpoint Regression Program,
1975-2006 With up to Four Joinpoints, 1992-2006 With up to Two Joinpoints,
Ages 50+ by Race/Ethnicity

	<u>Joinpoint Trend 1</u>		<u>Joinpoint Trend 2</u>		<u>Joinpoint Trend 3</u>		<u>Joinpoint Trend 4</u>		<u>Joinpoint Trend 5</u>		<u>AAPC^d</u>	
	Years	APC	Years	APC	Years	APC	Years	APC	Years	APC	1997-2006	2002-2006
<u>SEER 9 Delay-Adjusted Incidence^a, 1975-2006</u>												
All Races	1975-1983	-4.9*	1983-1991	-0.8	1991-2006	-3.4*					-3.4*	-3.4*
White	1975-1985	-4.6*	1985-1991	0.1	1991-2006	-3.3*					-3.3*	-3.3*
Black	1975-2006	-4.0*									-4.0*	-4.0*
<u>SEER 13 Delay-Adjusted Incidence^b, 1992-2006</u>												
All Races	1992-2006	-3.3*									-3.3*	-3.3*
White	1992-2006	-2.7*									-2.7*	-2.7*
Black	1992-2006	-3.9*									-3.9*	-3.9*
<u>SEER 9 Observed Incidence^a, 1975-2006</u>												
All Races	1975-1983	-4.9*	1983-1991	-0.8	1991-2006	-3.5*					-3.5*	-3.5*
White	1975-1985	-4.6*	1985-1991	0.1	1991-2006	-3.4*					-3.4*	-3.4*
Black	1975-2006	-4.1*									-4.1*	-4.1*
<u>SEER 13 Observed Incidence^b, 1992-2006</u>												
All Races	1992-2006	-3.3*									-3.3*	-3.3*
White	1992-2006	-2.8*									-2.8*	-2.8*
White NH ^{ef}	1992-2006	-3.1*									-3.1*	-3.1*
Black	1992-2006	-4.0*									-4.0*	-4.0*
Black NH ^{ef}	1992-2006	-4.0*									-4.0*	-4.0*
API ^e	1992-2006	-6.5*									-6.5*	-6.5*
AI/AN ^{eg}	1992-2006	-2.9									-2.9	-2.9
Hispanic ^e	1992-2006	-3.7*									-3.7*	-3.7*
<u>U.S. Cancer Mortality^c, 1975-2006</u>												
All Races												
White												
Black												
<u>U.S. Cancer Mortality^c, 1992-2006</u>												
All Races												
White												
White NH ^{ef}												
Black												
Black NH ^{ef}												
API ^e												
AI/AN ^{eg}												
Hispanic ^e												

Joinpoint Regression Program Version 3.3.1, April 2008, National Cancer Institute. (<http://srab.cancer.gov/joinpoint/>).

The APC is the Annual Percent Change based on rates age-adjusted to the 2000 US Std Population (19 age groups - Census P25-1130).

^a Trends are from the SEER 9 areas (San Francisco, Connecticut, Detroit, Hawaii, Iowa, New Mexico, Seattle, Utah, and Atlanta).

^b Trends are from the SEER 13 areas (SEER 9 Areas, Los Angeles, San Jose-Monterey, Rural Georgia, and the Alaska Native Registry).

^c Trends are from US Mortality Files, National Center for Health Statistics, Centers for Disease Control and Prevention.

^d The AAPC is the Average Annual Percent Change and is based on the APCs calculated by Joinpoint.

^e API - Asian/Pacific Islander, AI/AN - American Indian/Alaska Native, NH - Non-Hispanic

^f Hispanic and Non-Hispanic are not mutually exclusive from whites, blacks, Asian/Pacific Islanders, and American Indians/Alaska

Natives. Incidence data for Hispanics and Non-Hispanics are based on NHIA and exclude cases from the Alaska Native Registry.

The Hispanic and Non-Hispanic mortality trends exclude deaths from CT, ME, MD, MN, NH, NY, ND, OK and VT.

^g Data for American Indian/Alaska Native are based on the CHSDA (Contract Health Service Delivery Area) counties.

* The APC/AAPC is significantly different from zero ($p < .05$).

- Joinpoint regression line analysis could not be performed on data series.

Table 5.4
Cancer of the Cervix Uteri (Invasive)

Age-adjusted SEER Incidence^a Rates by Year, Race and Age

Year of Diagnosis:	All Races, Females			White Females			Black Females		
	All	<50	50+	All	<50	50+	All	<50	50+
1975	14.79	9.66	28.22	13.25	8.85	24.77	33.06	17.55	73.66
1976	14.26	9.49	26.74	12.90	8.76	23.74	29.25	15.84	64.38
1977	13.03	8.44	25.05	11.70	7.56	22.53	28.30	15.90	60.78
1978	12.54	8.31	23.63	11.39	7.77	20.87	24.14	12.35	55.00
1979	12.76	8.68	23.44	10.98	7.55	19.94	28.83	16.01	62.38
1980	12.23	8.11	23.03	10.98	7.30	20.61	23.43	13.50	49.44
1981	10.76	7.35	19.70	9.55	6.60	17.25	24.00	13.61	51.22
1982	10.62	7.12	19.77	9.40	6.68	16.51	21.82	10.15	52.38
1983	10.50	7.32	18.83	9.59	6.76	16.99	18.84	11.89	37.03
1984	11.04	8.00	19.00	10.00	7.41	16.79	21.08	12.59	43.32
1985	10.21	7.06	18.47	9.14	6.74	15.45	18.99	9.52	43.80
1986	10.82	7.87	18.57	9.71	7.31	15.98	18.39	10.72	38.46
1987	10.00	7.10	17.59	8.99	6.89	14.50	18.74	8.70	45.03
1988	10.58	7.86	17.70	9.51	7.43	14.97	18.98	10.45	41.33
1989	10.70	7.92	17.99	10.06	7.89	15.74	15.68	7.96	35.92
1990	10.64	8.04	17.46	9.94	7.73	15.74	16.72	9.65	35.23
1991	10.03	7.05	17.86	9.23	6.79	15.64	16.33	9.22	34.96
1992	9.93	7.46	16.41	9.42	7.21	15.22	14.07	9.90	24.98
1993	9.66	7.07	16.44	9.19	7.05	14.81	13.74	8.87	26.48
1994	9.45	6.88	16.18	8.71	6.79	13.73	14.03	6.94	32.58
1995	8.87	6.79	14.33	7.96	6.52	11.73	13.58	7.88	28.51
1996	9.63	7.38	15.52	8.74	7.14	12.94	14.37	8.16	30.62
1997	9.20	7.10	14.71	8.35	6.89	12.19	13.56	8.02	28.07
1998	9.10	7.08	14.39	8.42	6.85	12.53	13.09	8.97	23.90
1999	8.25	6.50	12.81	7.80	6.56	11.03	13.35	8.02	27.33
2000	7.70	5.84	12.57	7.42	5.90	11.40	10.22	6.42	20.18
2001	7.89	5.81	13.33	7.35	5.73	11.57	11.17	4.93	27.51
2002	7.37	5.64	11.90	6.98	5.66	10.43	10.29	6.48	20.29
2003	7.24	5.68	11.33	6.77	5.58	9.89	10.59	6.03	22.53
2004	7.05	5.43	11.28	6.77	5.56	9.95	10.39	6.40	20.83
2005	6.69	5.34	10.21	6.45	5.38	9.23	8.34	5.01	17.08
2006	6.72	5.40	10.18	6.58	5.50	9.39	8.30	4.95	17.07
1975-2006	9.71	7.05	16.68	8.98	6.80	14.70	15.73	8.83	33.81

^a SEER 9 areas (San Francisco, Connecticut, Detroit, Hawaii, Iowa, New Mexico, Seattle, Utah, and Atlanta).
Rates are per 100,000 and are age-adjusted to the 2000 US Std Population (19 age groups - Census P25-1130).
- Statistic not shown. Rate based on less than 16 cases for the time interval.

Table 5.6
Cancer of the Cervix Uteri (Invasive)

SEER Incidence^a and U.S. Death^b Rates, Age-Adjusted and Age-Specific Rates, by Race

	Incidence ^a			US Death ^b		
	All Races, Females	White Females	Black Females	All Races, Females	White Females	Black Females
<u>Age-Adjusted Rates, 2002-2006</u>						
Age at Diagnosis/Death:						
All ages	8.2	8.1	10.4			
Under 65	7.6	7.6	8.7			
65 and over	12.6	11.3	22.4			
All ages (IARC world std) ^c	6.5	6.4	8.0			
<u>Age-Specific Rates, 2002-2006</u>						
Age at Diagnosis/Death:						
<1	-	-	-			
1-4	-	-	-			
5-9	-	-	-			
10-14	-	-	-			
15-19	0.1	-	-			
20-24	1.6	1.5	2.1			
25-29	5.5	5.8	5.8			
30-34	11.0	12.0	9.7			
35-39	13.4	14.4	12.0			
40-44	15.3	15.2	16.9			
45-49	14.3	13.7	16.9			
50-54	13.5	13.0	16.8			
55-59	13.5	12.7	18.0			
60-64	13.7	12.3	22.4			
65-69	14.7	13.3	22.8			
70-74	13.2	12.2	19.9			
75-79	12.0	10.2	23.6			
80-84	10.9	9.7	23.2			
85+	10.0	8.5	23.9			

^a SEER 17 areas. Rates are per 100,000 and are age-adjusted to the 2000 US Std Population (19 age groups - Census P25-1130), unless noted.

^b US Mortality Files, National Center for Health Statistics, Centers for Disease Control and Prevention.

^c Rates are per 100,000 and are age-adjusted to the 2000 US Std Population (19 age groups - Census P25-1130), unless noted.

- Rates are per 100,000 and are age-adjusted to the IARC world standard population.

- Statistic not shown. Rate based on less than 16 cases for the time interval.

Table 5.7
Cancer of the Cervix Uteri (Invasive)

Survival Rates, by Race, Diagnosis Year, Stage and Age

	All Races, Females			White Females			Black Females		
	All	<50	50+	All	<50	50+	All	<50	50+
5-Year Relative Survival Rates									
Year of Diagnosis:									
1960-1963 ^a	-	-	-	58	-	-	47	-	-
1970-1973 ^a	-	-	-	64	-	-	61	-	-
1975-1977 ^b	69.9	82.4	58.5	70.7	83.8	58.9	65.0	75.5	55.0
1978-1980 ^b	68.6	78.5	58.9	69.4	79.9	59.5	61.7	70.5	52.7
1981-1983 ^b	68.3	79.5	56.5	69.0	80.7	56.3	61.6	73.7	49.4
1984-1986 ^b	68.1	78.0	56.2	70.0	79.7	57.5	58.3	67.9	48.3
1987-1989 ^b	71.2	79.7	59.5	73.7	82.7	59.9	58.1	63.4	53.2
1990-1992 ^b	70.6	79.0	58.3	71.9	81.2	57.9	58.8	63.3	52.4
1993-1995 ^b	73.3	81.8	60.5	74.7	83.4	60.6	64.2	71.0	54.5
1996-1998 ^b	73.5	81.0	61.5	74.6	82.7	60.5	65.3	67.7	61.7
1999-2005 ^b	71.8	81.2	57.8	73.1	83.3	57.0	64.8	71.3	56.0
5-Year Period Survival Rates^{cd}									
Year of Diagnosis:									
1999-2005	69.9	78.2	58.2	71.3	79.7	58.8	60.7	67.9	51.3
Stage Distribution (%) 1999-2005^e									
All Stages									
Number of cases	19,972	11,246	8,726	15,313	8,844	6,469	2,593	1,370	1,223
Percent	100%	100%	100%	100%	100%	100%	100%	100%	100%
Localized	50	61	36	51	62	35	43	52	33
Regional	35	28	43	34	27	43	38	34	43
Distant	11	8	15	11	8	16	12	8	17
Unstaged	5	4	6	4	3	6	6	5	7
5-Year Relative Survival Rates, 1999-2005^e									
Age at Diagnosis:									
Ages <45	80.9	-	-	82.5	-	-	70.8	-	-
Ages 45-54	69.8	-	-	70.9	-	-	60.8	-	-
Ages 55-64	61.5	-	-	61.0	-	-	55.8	-	-
Ages 65-74	56.2	-	-	56.5	-	-	47.9	-	-
Ages 75+	39.8	-	-	39.0	-	-	39.8	-	-
Ages <65	74.4	-	-	75.7	-	-	65.1	-	-
Ages 65+	49.9	-	-	50.0	-	-	44.8	-	-
Stage:									
All Stages	70.6	78.8	58.6	72.0	80.4	58.9	61.4	68.9	51.7
Localized	91.5	93.6	86.4	92.7	94.6	87.9	84.2	87.6	77.6
Regional	57.7	62.8	52.8	58.6	64.2	52.9	51.3	54.5	48.0
Distant	17.2	21.3	14.3	18.4	24.4	14.3	11.2	7.3	14.1
Unstaged	56.7	74.6	38.1	55.0	72.6	37.6	54.8 ^f	74.3 ^f	35.6 ^f

^a Rates are based on End Results data from a series of hospital registries and one population-based registry.

^b Rates are from the SEER 9 areas (San Francisco, Connecticut, Detroit, Hawaii, Iowa, New Mexico, Seattle, Utah, Atlanta).

Rates are based on follow-up of patients into 2006.

^c Rates are from the SEER 17 areas (San Francisco, Connecticut, Detroit, Hawaii, Iowa, New Mexico, Seattle, Utah, Atlanta, San Jose-Monterey, Los Angeles, Alaska Native Registry, Rural Georgia, California excluding SF/SJM/LA, Kentucky, Louisiana and New Jersey). California excluding SF/SJM/LA, Kentucky, Louisiana, and New Jersey contribute cases for diagnosis years 2000-2005.

^d The remaining 13 SEER Areas contribute cases for the entire period 1999-2005. Rates are based on follow-up of patients into 2006.

Period survival provides a more up-to-date estimate of survival by piecing together the most recent conditional survival estimates from several cohorts. It is computed here using three year calendar blocks (2003-2005: 0-1 year survival),

(2002-2004: 1-2 year survival), (2001-2003: 2-3 year survival), (2000-2002: 3-4 year survival), (1999-2001: 4-5 years survival).

^e The difference in rates between 1975-1977 and 1999-2005 is statistically significant ($p < .05$).

^f The standard error of the survival rate is between 5 and 10 percentage points.

^g The standard error of the survival rate is greater than 10 percentage points.

- Statistic could not be calculated due to fewer than 25 cases during the time period.

Table 5.8
Cancer of the Cervix Uteri (Invasive)

Survival Rates^a
By Year of Diagnosis

All Races, Females

Year of Diagnosis

	1975- 1979	1980- 1984	1985- 1989	1990	1991	1992	1993	1994	1995	1996	1997	1998	1999	2000	2001	2002	2003	2004	2005
Relative Survival Rates (SEER ^b)																			
1-year	87.1	87.8	87.6	88.4	89.0	87.5	89.5	88.0	90.0	89.3	89.5	88.7	90.0	88.8	86.2	88.2	87.2	86.8	87.6
2-year	78.3	77.9	78.5	80.1	80.1	78.7	80.2	80.8	82.5	82.5	80.9	81.7	83.3	81.7	79.7	80.0	79.7	77.6	
3-year	73.6	73.4	73.9	76.0	74.9	74.7	76.1	76.9	79.1	78.4	76.4	77.1	79.0	77.0	76.4	75.3	76.2		
4-year	71.0	70.6	71.4	73.9	71.7	71.2	73.4	74.5	76.5	75.3	73.7	74.6	76.9	74.9	74.0	72.9			
5-year	69.3	68.9	69.6	72.9	69.7	69.0	71.6	73.1	75.4	74.4	72.6	73.4	75.5	73.3	71.9				
6-year	68.3	67.1	68.6	71.8	68.2	67.9	71.3	71.6	74.1	73.9	71.1	72.1	74.7	72.6					
7-year	67.4	65.7	67.7	71.1	67.7	67.2	70.7	70.5	73.1	73.1	70.8	71.2	74.4						
8-year	66.8	64.6	66.9	70.3	66.7	66.7	70.3	69.8	72.5	72.2	70.5	71.0							
9-year	66.3	64.1	66.6	68.5	66.0	66.4	70.0	69.7	71.8	71.0	69.3								
10-year	65.4	63.8	66.1	67.3	66.0	66.4	69.7	69.1	71.1	70.5									
11-year	64.9	63.5	65.8	67.1	66.0	65.8	69.7	68.6	71.0										
12-year	64.5	62.9	65.3	67.1	66.0	65.0	69.5	68.2											
13-year	64.2	62.7	65.0	66.8	65.5	64.9	69.4												
14-year	63.9	62.2	64.7	66.3	65.2	64.9													
15-year	63.6	61.7	64.3	66.3	65.1														
16-year	63.3	61.4	64.0	66.3															
17-year	63.0	60.8	63.5																
18-year	62.9	60.2																	
19-year	62.4	60.0																	
20-year	62.1	59.7																	

^a Survival rates are relative rates expressed as percents.
^b Rates are from the SEER 9 areas (San Francisco, Connecticut, Detroit, Hawaii, Iowa, New Mexico, Seattle, Utah, and Atlanta).

Table 5.10
Cancer of the Cervix Uteri (Invasive)

SEER Incidence and U.S. Mortality
Age-Adjusted Rates and Trends^a
By Race/Ethnicity

SEER Incidence	SEER 17 Areas ^b	SEER 13 Areas ^b	SEER 9 Areas ^b
	Rate 2002-2006	Trend 1997-2006 ^c	Trend 1997-2006 ^d
	Rate per 100,000 persons	AAPC (%)	AAPC (%)
RACE/ETHNICITY	Females	Females	Females
All Races	8.2	-2.9*	-3.6*
White	8.1	-2.4*	-2.6*
White Hispanic ^e	13.1	-3.8*	-
White Non-Hispanic ^e	7.1	-2.5*	-
Black	10.4	-5.2*	-3.8*
Asian/Pacific Islander	7.6	-4.8*	-
Amer Ind/Alaska Nat ^f	7.2	-1.6	-
Hispanic ^e	12.7	-3.8*	-
<u>U.S. Mortality^g</u>			
	Rate 2002-2006	Trend 1997-2006 ^h	
	Rate per 100,000 persons	AAPC (%)	
RACE/ETHNICITY	Females	Females	
All Races			
White			
White Hispanic ^e			
White Non-Hispanic ^e			
Black			
Asian/Pacific Islander			
Amer Ind/Alaska Nat			
Total U.S.			
CHSDA Counties			
Non-CHSDA Counties			
Hispanic ^e			

The AAPC is the Average Annual Percent Change over the time interval. The AAPCs are calculated by the Joinpoint Regression Program Version 3.3, April 2008, National Cancer Institute.

Statistic not shown. Rate based on less than 16 cases for the time interval.

Trend based on less than 10 cases for at least one year within the time interval.

Rates are age-adjusted to the 2000 US Std Population (19 age groups - Census P25-1130). Trends are based on rates age-adjusted to the 2000 US Std Population (19 age groups - Census P25-1130).

The SEER 9 areas are San Francisco, Connecticut, Detroit, Hawaii, Iowa, New Mexico, Seattle, Utah and Atlanta.

The SEER 13 areas comprise the SEER 9 areas plus San Jose-Monterey, Los Angeles, the Alaska Native Registry and Rural Georgia.

The SEER 17 areas comprise the SEER 13 areas plus California excluding SF/SJM/LA, Kentucky, Louisiana and New Jersey.

The 1997-2006 AAPC estimates are based on a Joinpoint analysis with up to 2 Joinpoints over diagnosis years 1992-2006.

The 1997-2006 AAPC estimates are based on a Joinpoint analysis with up to 4 Joinpoints over diagnosis years 1975-2006.

Hispanic and Non-Hispanic are not mutually exclusive from whites, blacks, Asian/Pacific Islanders, and American Indians/Alaska Natives. Incidence data for Hispanics and Non-Hispanics are based on NHIA and exclude cases from the Alaska Native Registry. The 2002-2006 Hispanic and Non-Hispanic death rates exclude deaths from Minnesota, New Hampshire and North Dakota. The 1997-2006 Hispanic and Non-Hispanic mortality trends exclude deaths from Connecticut, Maine, Maryland, Minnesota, New Hampshire, New York, North Dakota, Oklahoma and Vermont.

Incidence data for American Indian/Alaska Native are based on the CHSDA (Contract Health Service Delivery Area) counties.

US Mortality Files, National Center for Health Statistics, CDC.

The 1997-2006 mortality AAPCs are based on a Joinpoint analysis using years of death 1992-2006.

The APC is significantly different from zero (p<.05).

Table 5.11
Cancer of the Cervix Uteri (Invasive)

Age-Adjusted SEER Incidence Rates^a
By Registry, Race and Age

	All Races			Whites			Blacks		
	All Ages	Ages <50	Ages 50+	All Ages	Ages <50	Ages 50+	All Ages	Ages <50	Ages 50+
<u>SEER Incidence Rates^a, 2002-2006</u>									
Atlanta & Rural Georgia	7.97	5.36	14.83	6.89	5.39	10.83	10.60	5.41	24.19
Atlanta	7.84	5.35	14.38	6.86	5.34	10.84	10.24	5.46	22.78
Rural Georgia	10.40	-	22.61	-	-	-	15.40	-	45.53
California	8.38	6.40	13.55	8.57	6.90	12.95	7.49	4.75	14.67
Greater Bay Area	6.33	4.95	9.96	6.47	5.50	9.00	6.79	4.26	13.42
San Francisco-Oakland	5.79	4.41	9.41	5.74	4.73	8.39	6.61	4.46	12.23
San Jose-Monterey	7.36	5.94	11.10	7.72	6.82	10.10	-	-	-
Los Angeles	10.48	7.45	18.40	11.08	8.13	18.80	8.14	5.35	15.45
Greater California	8.07	6.38	12.51	8.13	6.75	11.75	7.04	4.32	14.16
Connecticut	6.57	4.79	11.23	6.25	4.83	9.98	10.77	4.93	26.09
Detroit	8.06	6.34	12.55	7.17	5.98	10.28	11.34	7.86	20.44
Hawaii	7.56	6.32	10.81	7.12	5.86	10.41	-	-	-
Iowa	7.15	5.94	10.32	7.00	5.85	10.02	-	-	-
Kentucky	9.44	7.49	14.57	9.13	7.30	13.92	13.22	8.89	24.57
Louisiana	9.56	8.15	13.25	8.07	7.38	9.87	13.55	9.99	22.86
New Jersey	9.20	6.82	15.44	8.78	6.77	14.05	12.93	8.18	25.37
New Mexico	8.42	6.55	13.33	8.53	6.92	12.76	-	-	-
Seattle-Puget Sound	6.94	5.97	9.48	6.93	6.16	8.95	5.22	-	-
Utah	5.90	4.97	8.33	5.76	5.01	7.74	-	-	-
9 SEER Areas ^b	7.01	5.50	10.96	6.71	5.54	9.78	9.55	5.76	19.50
11 SEER Areas ^b	7.83	6.00	12.64	7.73	6.23	11.67	9.17	5.63	18.45
13 SEER Areas ^b	7.85	6.00	12.67	7.73	6.23	11.66	9.27	5.61	18.84
17 SEER Areas ^b	8.24	6.38	13.12	8.07	6.55	12.05	10.42	6.62	20.38

^a Rates are per 100,000 and are age-adjusted to the 2000 US Std Population (19 age groups - Census P25-1130)

^b The SEER 9 areas are San Francisco, Connecticut, Detroit, Hawaii, Iowa, New Mexico, Seattle, Utah and Atlanta.

The SEER 11 areas comprise the SEER 9 areas plus San Jose-Monterey and Los Angeles.

The SEER 13 areas comprise the SEER 11 areas plus the Alaska Native Registry and Rural Georgia.

The SEER 17 areas comprise the SEER 13 areas plus California excluding SF/SJM/LA, Kentucky, Louisiana and New Jersey.

- Statistic not shown. Rate based on less than 16 cases for the time interval.

Table 5.14
Cancer of the Cervix Uteri (Invasive)

Estimated United States Cancer Prevalence Counts^a on January 1, 2006
By Race/Ethnicity and Years Since Diagnosis

Years Since Diagnosis	0 to <5	5 to <10	10 to <15	15 to <20	20 to <25	25 to <30	0 to <16 ^e	0 to <31 ^e	>=31 ^g	Complete ^h
<u>Race</u>										
All Races ^b	39,451	38,535	34,731	30,783	23,101	21,728	119,712	192,354	55,812	248,166
White ^b	31,048	30,600	28,499	25,641	19,137	17,691	95,858	155,925	46,577	202,502
Black ^b	5,677	5,244	4,021	3,443	3,036	3,056	15,832	25,053	+	+
Asian/Pacific Islander ^c	2,055	1,752	1,476	+	+	+	5,523	+	+	+
Hispanic ^d	8,083	6,813	5,682	+	+	+	21,602	+	+	+

Estimated prevalence percent^a on January 1, 2006, of the SEER 11 population diagnosed in the previous 16 years
By Age at Prevalence and Race/Ethnicity

Age at Prevalence	Age Specific (Crude)										Age-Adjusted ^f All Ages	
	All Ages	0-9	10-19	20-29	30-39	40-49	50-59	60-69	70-79	80+		
<u>Race</u>												
All Races ^c	0.0822%	-	0.0004%	0.0108%	0.0835%	0.1594%	0.1706%	0.1513%	0.1363%	0.0801%	0.0795%	
White ^c	0.0833%	-	0.0004%	0.0115%	0.0951%	0.1698%	0.1681%	0.1396%	0.1191%	0.0614%	0.0802%	
Black ^c	0.0731%	-	-	0.0111%	0.0647%	0.1336%	0.1645%	0.1878%	0.1745%	0.1595%	0.0795%	
Asian/Pacific Islander ^c	0.0797%	-	-	0.0024%	0.0337%	0.1155%	0.1800%	0.1909%	0.2144%	0.1769%	0.0756%	
Hispanic ^d	0.0999%	-	-	0.0102%	0.0926%	0.2510%	0.3054%	0.3142%	0.2999%	0.1769%	0.1352%	

^a US 2006 cancer prevalence counts are based on 2006 cancer prevalence proportions from the SEER registries and 1/1/2006 US population estimates based on the average of 2005 and 2006 population estimates from the US Bureau of the Census. Prevalence was calculated using the First Malignant Primary Only for a person.

^{b c d} Statistics based on (b) SEER 9 Areas (c) SEER 11 Areas and Rural Georgia (d) NHIA for Hispanic for SEER 11 Areas and Rural Georgia.

^e Maximum limited-duration prevalence: 31 years for 1975-2006 SEER 9 data; 16 years for 1990-2006 SEER 11 data (used to calculate prevalence for Hispanics and Asian Pacific Islanders).

^f Percentages are age-adjusted to the 2000 US Standard Population (19 age groups - Census P25-1130) by 5-year age groups.

^{g h i} (g) Cases diagnosed more than 31 years ago were estimated using the completeness index method (Capocaccia et. al. 1997, Merrill et. al. 2000). (h) Complete prevalence is obtained by summing 0 to <31 and >=31. (i) Age-specific completeness index was approximated using empirical data from historical Connecticut tumor registry.

- Statistic not shown. Statistic based on fewer than 5 cases estimated alive in SEER for the time interval.

+ Not available.

Table 5.15

Cancer of the Cervix Uteri (Invasive)Percent Distribution and Counts by Histology among Histologically Confirmed Cases, 2002-2006
Females by Race

Histology ^a	All Races		White		Black		Asian/Pacific Islander		American Indian/ Alaska Native ^b		Hispanic ^c	
	Count	Percent	Count	Percent	Count	Percent	Count	Percent	Count	Percent	Count	Percent
Carcinoma	15,531	98.4%	11,846	98.4%	2,015	98.3%	1,388	98.5%	88	100.0%	3,684	99.0%
Epidermoid carcinoma ^d (8050-8131)	10,835	68.7%	8,114	67.4%	1,608	78.5%	914	64.9%	69	78.4%	2,697	72.5%
Squamous cell carcinoma (8070)	7,026	44.5%	5,184	43.1%	1,154	56.3%	564	40.0%	43	48.9%	1,578	42.4%
Squamous cell, keratinizing (8071)	1,217	7.7%	925	7.7%	174	8.5%	97	6.9%	-	-	381	10.2%
Squamous cell, non-keratinizing (8072)	1,504	9.5%	1,174	9.8%	166	8.1%	143	10.1%	-	-	429	11.5%
Squamous cell, Microinvasive (8076)	846	5.4%	662	5.5%	80	3.9%	76	5.4%	-	-	247	6.6%
Other (8050-8069, 8073-8075,8077-8131)	242	1.5%	169	1.4%	34	1.7%	34	2.4%	-	-	62	1.7%
Adenocarcinoma (8140-8147,8160-8162, 8180-8221,8250-8507,8514, 8520-8551,8560,8570-8574, 8576,8940-8941)	3,976	25.2%	3,201	26.6%	304	14.8%	403	28.6%	-	-	839	22.5%
Adenocarcinoma, NOS (8140)	2,078	13.2%	1,684	14.0%	151	7.4%	203	14.4%	-	-	442	11.9%
Adenosquamous (8560,8570)	678	4.3%	535	4.4%	67	3.3%	70	5.0%	-	-	179	4.8%
Other adenocarcinomas (8141-8147,8160-8162, 8180-8221,8250-8507, 8514,8520-8551, 8571-8574,8576, 8940-8941)	1,220	7.7%	982	8.2%	86	4.2%	130	9.2%	-	-	218	5.9%
Other specific carcinomas (8012-8015,8030-8046, 8150-8155,8170-8175, 8230-8249,8508,8510-8513, 8561-8562,8575,8580-8671)	263	1.7%	193	1.6%	28	1.4%	38	2.7%	-	-	54	1.5%
Unspecified, Carcinoma, NOS (8010-8011)	457	2.9%	338	2.8%	75	3.7%	33	2.3%	-	-	94	2.5%

Source: SEER 17 areas (San Francisco, Connecticut, Detroit, Hawaii, Iowa, New Mexico, Seattle, Utah, Atlanta, San Jose-Monterey, Los Angeles, Alaska Native Registry, Rural Georgia, California excluding SF/SJM/LA, Kentucky, Louisiana and New Jersey). Percents may not sum to 100 due to rounding.

^a Excludes Kaposi Sarcoma, mesothelioma, lymphomas, leukemias, myelomas, lymphoreticular, and immunoproliferative diseases.

^b Estimates for American Indian/Alaska Native are based on the CHSDA(Contract Health Service Delivery Area) counties.

^c Hispanic is not mutually exclusive from whites, blacks, Asian/Pacific Islanders, and American Indians/Alaska Natives.

^d Underlying incidence data for Hispanics are based on NHIA and exclude cases from the Alaska Native Registry.

^e Epidermoid carcinoma includes squamous, basal, and transitional cell carcinomas.

- Statistic not shown due to fewer than 16 cases during the time period.

Table 5.15 - continued

Cancer of the Cervix Uteri (Invasive)Percent Distribution and Counts by Histology among Histologically Confirmed Cases, 2002-2006
Females by Race

Histology ^a	<u>All Races</u>		<u>White</u>		<u>Black</u>		<u>Asian/Pacific Islander</u>		<u>American Indian/ Alaska Native^b</u>		<u>Hispanic^c</u>	
	Count	Percent	Count	Percent	Count	Percent	Count	Percent	Count	Percent	Count	Percent
Sarcoma (8680-8713,8800-8921, 9040-9044,9120-9136, 9150-9252,9370-9373, 9540-9582)	69	0.4%	57	0.5%	-	-	-	-	-	-	16	0.4%
Other specific types (8720-8790,8930-8936, 8950-9030,9060-9110, 9260-9365,9380-9539)	122	0.8%	90	0.7%	17	0.8%	-	-	-	-	-	-
Unspecified (8000-8005)	59	0.4%	42	0.3%	-	-	-	-	-	-	-	-
Total ^d	15,781	100.0%	12,035	100.0%	2,049	100.0%	1,409	100.0%	88	100.0%	3,722	100.0%

Source: SEER 17 areas (San Francisco, Connecticut, Detroit, Hawaii, Iowa, New Mexico, Seattle, Utah, Atlanta, San Jose-Monterey, Los Angeles, Alaska Native Registry, Rural Georgia, California excluding SF/SJM/LA, Kentucky, Louisiana and New Jersey). Percents may not sum to 100 due to rounding.

^a Excludes Kaposi Sarcoma, mesothelioma, lymphomas, leukemias, myelomas, lymphoreticular, and immunoproliferative diseases.

^b Estimates for American Indian/Alaska Native are based on the CHSDA(Contract Health Service Delivery Area) counties.

^c Hispanic is not mutually exclusive from whites, blacks, Asian/Pacific Islanders, and American Indians/Alaska Natives.

Underlying incidence data for Hispanics are based on NHIA and exclude cases from the Alaska Native Registry.

^d Total includes carcinoma cases from the previous page.

- Statistic not shown due to fewer than 16 cases during the time period.

SEER Observed Incidence, SEER Delay Adjusted Incidence and US Death Rates^a Cancer of the Cervix Uteri, by Race

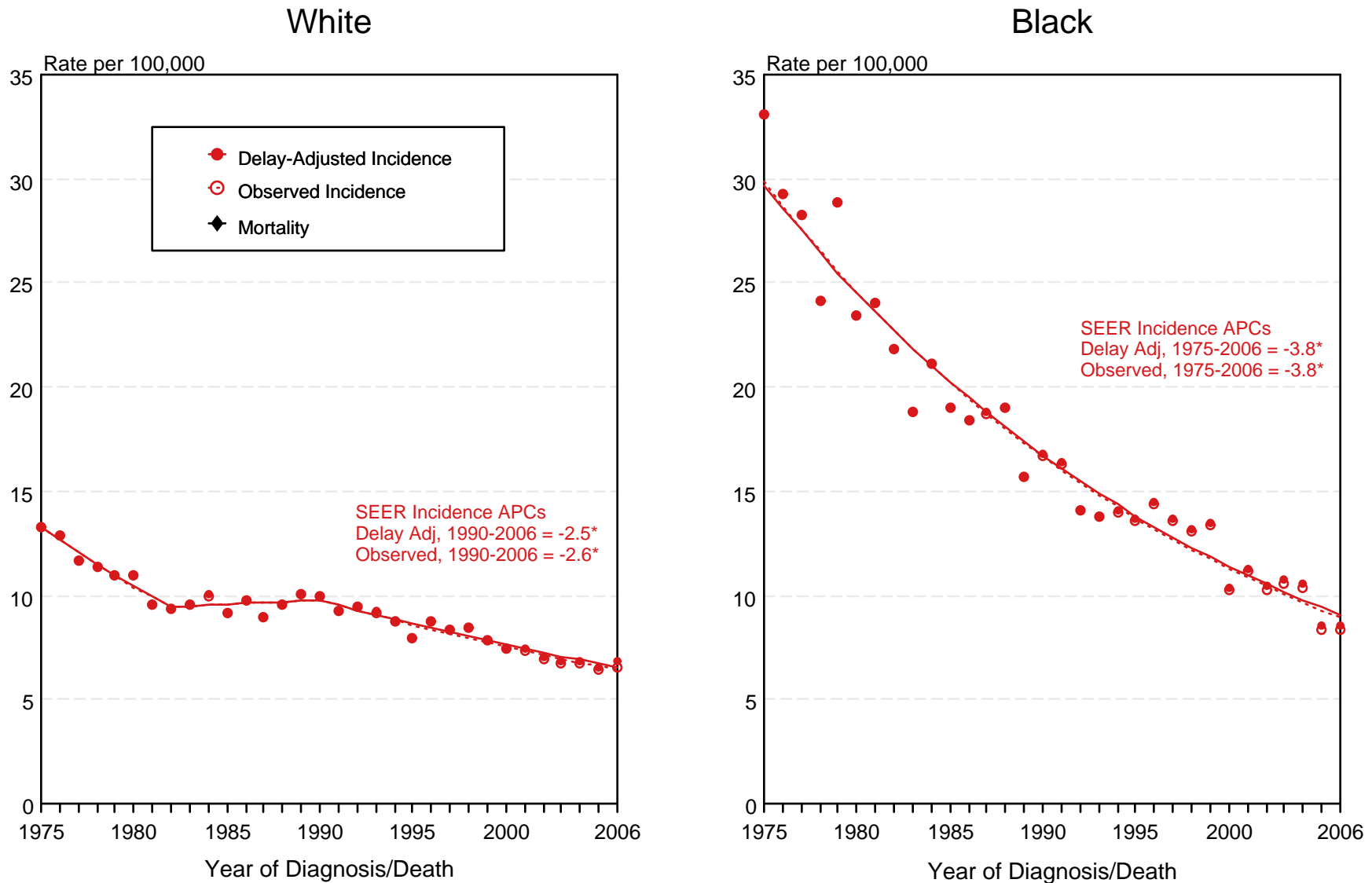


Figure 5.1

^a Source: SEER 9 areas and US Mortality Files (National Center for Health Statistics, CDC). Rates are age-adjusted to the 2000 US Std Population (19 age groups - Census P25-1103). Regression lines and APCs are calculated using the Joinpoint Regression Program Version 3.3.1, April 2008, National Cancer Institute. The APC is the Annual Percent Change for the regression line segments. The APC shown on the graph is for the most recent trend.
* The APC is significantly different from zero ($p < 0.05$).

SEER Observed Incidence, SEER Delay Adjusted Incidence and US Death Rates^a Cancer of the Cervix Uteri, by Age and Race

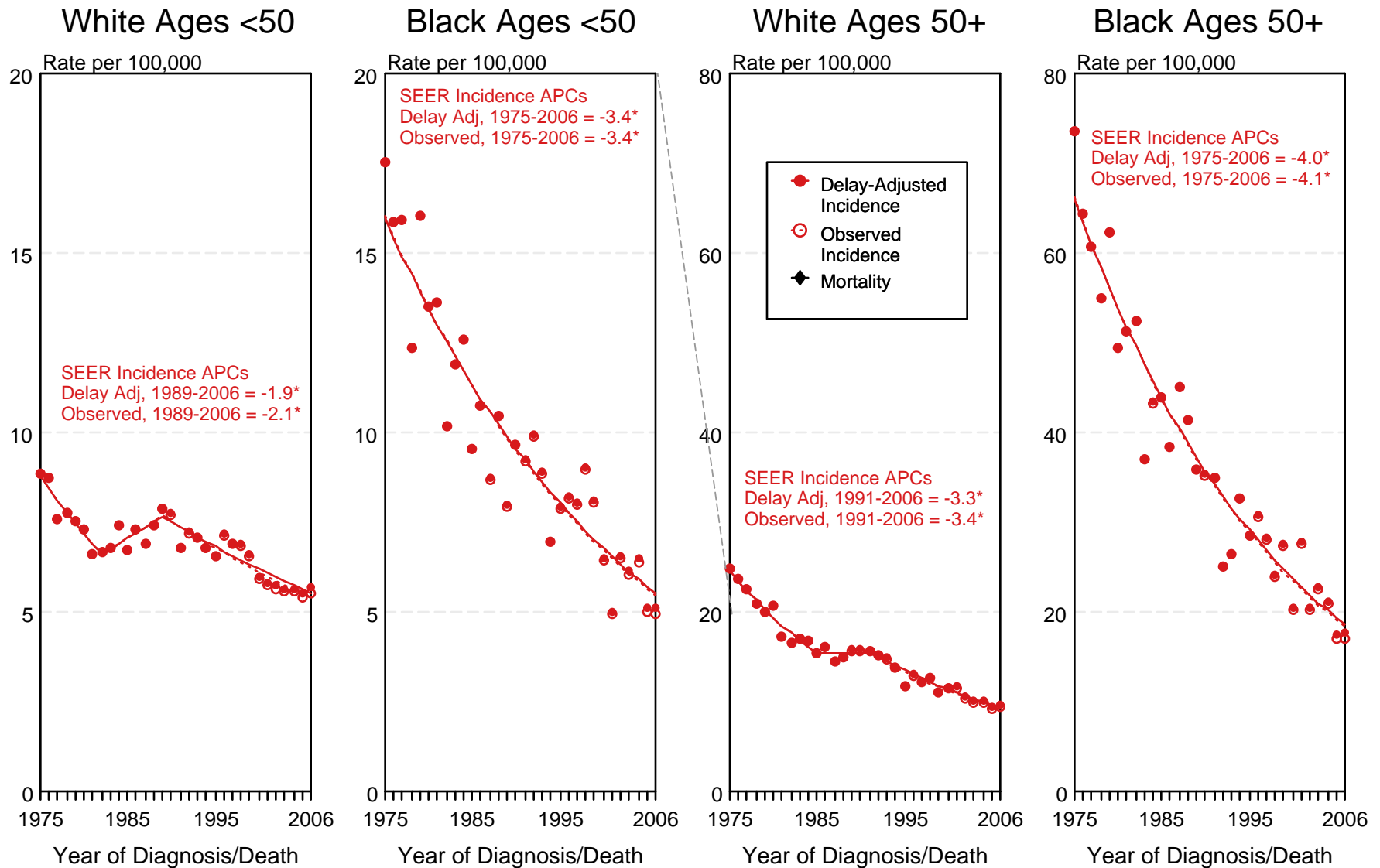


Figure 5.2

^a Source: SEER 9 areas and US Mortality Files (National Center for Health Statistics, CDC). Rates are age-adjusted to the 2000 US Std Population (19 age groups - Census P25-1103). Regression lines and APCs are calculated using the Joinpoint Regression Program Version 3.3.1, April 2008, National Cancer Institute. The APC is the Annual Percent Change for the regression line segments. The APC shown on the graph is for the most recent trend.
* The APC is significantly different from zero ($p < 0.05$).

SEER Incidence and US Death Rates^a Cancer of the Cervix Uteri

Joinpoint Analyses for Whites and Blacks from 1975-2006
and for Asian/Pacific Islanders, American Indians/Alaska Natives and Hispanics from 1992-2006

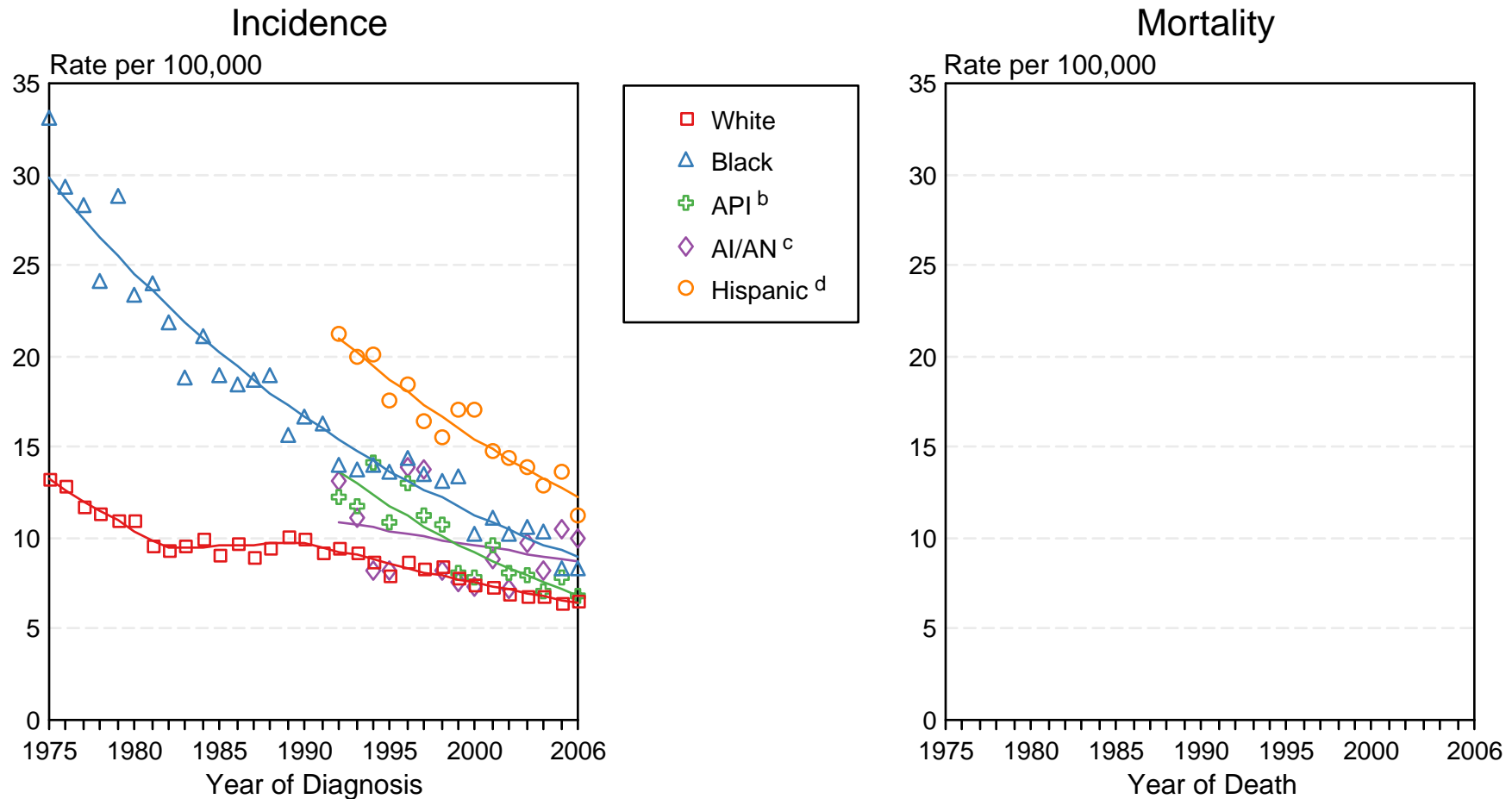


Figure 5.3

Source: Incidence data for whites and blacks are from the SEER 9 areas (San Francisco, Connecticut, Detroit, Hawaii, Iowa, New Mexico, Seattle, Utah, Atlanta).

Incidence data for Asian/Pacific Islanders, American Indians/Alaska Natives and Hispanics are from the SEER 13 Areas (SEER 9 Areas, San Jose-Monterey, Los Angeles, Alaska Native Registry and Rural Georgia). Mortality data are from US Mortality Files, National Center for Health Statistics, CDC.

^a Rates are age-adjusted to the 2000 US Std Population (19 age groups - Census P25-1103).

Regression lines are calculated using the Joinpoint Regression Program Version 3.3.1, April 2008, National Cancer Institute. Joinpoint analyses for Whites and Blacks during the 1975-2006 period allow a maximum of 4 joinpoints. Analyses for other ethnic groups during the period 1992-2006 allow a maximum of 2 joinpoints.

^b API = Asian/Pacific Islander.

^c AI/AN = American Indian/Alaska Native. Rates for American Indian/Alaska Native are based on the CHSDA(Contract Health Service Delivery Area) counties.

^d Hispanic is not mutually exclusive from whites, blacks, Asian/Pacific Islanders, and American Indians/Alaska Natives. Incidence data for Hispanics are based on NHIA and exclude cases from the Alaska Native Registry. Mortality data for Hispanics exclude cases from Connecticut, Maine, Maryland, Minnesota, New Hampshire, New York, North Dakota, Oklahoma, and Vermont.