

Table VI-1
COLON AND RECTUM CANCER (Invasive)

TRENDS IN SEER INCIDENCE^a AND U.S. MORTALITY^b USING THE JOINPOINT REGRESSION PROGRAM, 1975-2005
WITH UP TO THREE JOINPOINTS BY RACE AND SEX

		Joinpoint Trend 1		Joinpoint Trend 2		Joinpoint Trend 3		Joinpoint Trend 4		AAPC ^c	
		Years	APC	Years	APC	Years	APC	Years	APC	1996-2005	2001-2005
<u>SEER Cancer Incidence^a</u>											
All Races	Both Sexes	1975-1985	0.8*	1985-1995	-1.8*	1995-1998	1.5	1998-2005	-2.6*	-1.7*	-2.6*
All Races	Male	1975-1986	1.1*	1986-1995	-2.2*	1995-1998	1.3	1998-2005	-3.0*	-2.0*	-3.0*
All Races	Female	1975-1985	0.3	1985-1995	-1.9*	1995-1998	1.9	1998-2005	-2.4*	-1.4*	-2.4*
White	Both Sexes	1975-1985	0.8*	1985-1995	-2.0*	1995-1998	1.7	1998-2005	-2.7*	-1.8*	-2.7*
White	Male	1975-1986	1.1*	1986-1995	-2.3*	1995-1998	1.3	1998-2005	-3.1*	-2.1*	-3.1*
White	Female	1975-1985	0.3	1985-1995	-2.1*	1995-1998	2.2	1998-2005	-2.6*	-1.6*	-2.6*
Black	Both Sexes	1975-1980	3.3*	1980-2003	-0.2	2003-2005	-5.6			-1.4	-2.9
Black	Male	1975-1989	1.4*	1989-2005	-0.8*					-0.8*	-0.8*
Black	Female	1975-1980	2.7	1980-2005	-0.4*					-0.4*	-0.4*
<u>SEER Delay-Adjusted Incidence^a</u>											
All Races	Both Sexes	1975-1985	0.8*	1985-1995	-1.8*	1995-1998	1.5	1998-2005	-2.4*	-1.5*	-2.4*
All Races	Male	1975-1986	1.1*	1986-1995	-2.1*	1995-1998	1.2	1998-2005	-2.8*	-1.9*	-2.8*
All Races	Female	1975-1985	0.3	1985-1995	-1.9*	1995-1998	1.9	1998-2005	-2.2*	-1.3*	-2.2*
White	Both Sexes	1975-1985	0.8*	1985-1995	-2.0*	1995-1998	1.6	1998-2005	-2.6*	-1.6*	-2.6*
White	Male	1975-1986	1.1*	1986-1995	-2.3*	1995-1998	1.3	1998-2005	-2.9*	-2.0*	-2.9*
White	Female	1975-1985	0.3	1985-1995	-2.0*	1995-1998	2.2	1998-2005	-2.4*	-1.4*	-2.4*
Black	Both Sexes	1975-1980	3.6*	1980-2005	-0.3*					-0.3*	-0.3*
Black	Male	1975-1989	1.3*	1989-2005	-0.7*					-0.7*	-0.7*
Black	Female	1975-1980	2.6	1980-2005	-0.3*					-0.3*	-0.3*
<u>U.S. Cancer Mortality^b</u>											
All Races	Both Sexes	1975-1978	0.2	1978-1985	-0.8*	1985-2002	-1.8*	2002-2005	-4.4*	-2.6*	-3.7*
All Races	Male	1975-1984	-0.1	1984-1990	-1.4*	1990-2002	-2.0*	2002-2005	-4.3*	-2.8*	-3.7*
All Races	Female	1975-1984	-1.0*	1984-2002	-1.8*	2002-2005	-4.3*			-2.7*	-3.7*
White	Both Sexes	1975-1978	0.1	1978-1985	-1.0*	1985-2002	-1.9*	2002-2005	-4.4*	-2.7*	-3.8*
White	Male	1975-1979	0.5	1979-1987	-0.8*	1987-2002	-2.1*	2002-2005	-4.5*	-2.9*	-3.9*
White	Female	1975-1984	-1.2*	1984-2002	-2.0*	2002-2005	-4.3*			-2.8*	-3.8*
Black	Both Sexes	1975-1990	0.7*	1990-2001	-0.8*	2001-2005	-3.0*			-1.8*	-3.0*
Black	Male	1975-1990	1.2*	1990-2000	-0.6*	2000-2005	-2.5*			-1.7*	-2.5*
Black	Female	1975-1985	0.8*	1985-2001	-0.7*	2001-2005	-3.5*			-2.0*	-3.5*

Joinpoint Regression Program Version 3.3.1, April 2008, National Cancer Institute. (<http://srab.cancer.gov/joinpoint/>).
The APC is the Annual Percent Change based on rates age-adjusted to the 2000 US Std Population (19 age groups - Census P25-1130).
Trends are from the SEER 9 areas (San Francisco, Connecticut, Detroit, Hawaii, Iowa, New Mexico, Seattle, Utah, and Atlanta).
Trends are from US Mortality Files, National Center for Health Statistics, Centers for Disease Control and Prevention.
The AAPC is the Average Annual Percent Change and is based on the APCs calculated by Joinpoint over the time range of 1975-2005.
The APC/AAPC is significantly different from zero ($p < .05$).

Table VI-1a
COLON AND RECTUM CANCER (Invasive)

TRENDS IN SEER INCIDENCE^a AND U.S. MORTALITY^b USING THE JOINPOINT REGRESSION PROGRAM, 1975-2005
WITH UP TO FOUR JOINPOINTS BY RACE AND SEX

		Joinpoint Trend 1		Joinpoint Trend 2		Joinpoint Trend 3		Joinpoint Trend 4		Joinpoint Trend 5		AAPC ^c
		Years	APC	Years	APC	Years	APC	Years	APC	Years	APC	2001-2005
<u>SEER Cancer Incidence^a</u>												
All Races	Both Sexes	1975-1985	0.8*	1985-1995	-1.8*	1995-1998	1.1	1998-2002	-1.9*	2002-2005	-3.7*	-3.3*
All Races	Male	1975-1985	1.1*	1985-1991	-1.2*	1991-1995	-3.2*	1995-1998	2.0	1998-2005	-3.0*	-3.0*
All Races	Female	1975-1985	0.3	1985-1995	-1.9*	1995-1998	1.9	1998-2005	-2.4*			-2.4*
White	Both Sexes	1975-1985	0.8*	1985-1995	-2.0*	1995-1998	1.7	1998-2005	-2.7*			-2.7*
White	Male	1975-1985	1.1*	1985-1991	-1.4*	1991-1995	-3.3*	1995-1998	2.0	1998-2005	-3.1*	-3.1*
White	Female	1975-1985	0.3	1985-1995	-2.1*	1995-1998	2.2	1998-2005	-2.6*			-2.6*
Black	Both Sexes	1975-1980	3.3*	1980-2003	-0.2	2003-2005	-5.6					-2.9
Black	Male	1975-1989	1.4*	1989-2005	-0.8*							-0.8*
Black	Female	1975-1980	2.7	1980-2005	-0.4*							-0.4*
<u>SEER Delay-Adjusted Incidence^a</u>												
All Races	Both Sexes	1975-1985	0.8*	1985-1995	-1.8*	1995-1998	1.5	1998-2005	-2.4*			-2.4*
All Races	Male	1975-1985	1.1*	1985-1991	-1.2*	1991-1995	-3.1*	1995-1998	1.9	1998-2005	-2.8*	-2.8*
All Races	Female	1975-1985	0.3	1985-1995	-1.9*	1995-1998	1.9	1998-2005	-2.2*			-2.2*
White	Both Sexes	1975-1985	0.8*	1985-1995	-2.0*	1995-1998	1.6	1998-2005	-2.6*			-2.6*
White	Male	1975-1985	1.1*	1985-1991	-1.4*	1991-1995	-3.2*	1995-1998	1.9	1998-2005	-3.0*	-3.0*
White	Female	1975-1985	0.3	1985-1995	-2.0*	1995-1998	2.2	1998-2005	-2.4*			-2.4*
Black	Both Sexes	1975-1980	3.6*	1980-2005	-0.3*							-0.3*
Black	Male	1975-1989	1.3*	1989-2005	-0.7*							-0.7*
Black	Female	1975-2005	-0.2									-0.2
<u>U.S. Cancer Mortality^b</u>												
All Races	Both Sexes	1975-1984	-0.5*	1984-2002	-1.8*	2002-2005	-4.4*					-3.7*
All Races	Male	1975-1978	0.8	1978-1984	-0.4	1984-1990	-1.3*	1990-2002	-2.0*	2002-2005	-4.3*	-3.7*
All Races	Female	1975-1984	-1.0*	1984-2002	-1.8*	2002-2005	-4.3*					-3.7*
White	Both Sexes	1975-1978	0.1	1978-1985	-1.0*	1985-2002	-1.9*	2002-2005	-4.4*			-3.8*
White	Male	1975-1979	0.5	1979-1987	-0.8*	1987-2002	-2.1*	2002-2005	-4.5*			-3.9*
White	Female	1975-1984	-1.2*	1984-2002	-2.0*	2002-2005	-4.3*					-3.8*
Black	Both Sexes	1975-1990	0.7*	1990-2001	-0.8*	2001-2005	-3.0*					-3.0*
Black	Male	1975-1990	1.2*	1990-2000	-0.6*	2000-2005	-2.5*					-2.5*
Black	Female	1975-1985	0.8*	1985-2001	-0.7*	2001-2005	-3.5*					-3.5*

Joinpoint Regression Program Version 3.3.1, April 2008, National Cancer Institute. (<http://srab.cancer.gov/joinpoint/>).

The APC is the Annual Percent Change based on rates age-adjusted to the 2000 US Std Population (19 age groups - Census P25-1130).

Trends are from the SEER 9 areas (San Francisco, Connecticut, Detroit, Hawaii, Iowa, New Mexico, Seattle, Utah, and Atlanta).

Trends are from US Mortality Files, National Center for Health Statistics, Centers for Disease Control and Prevention.

The AAPC is the Average Annual Percent Change and is based on the APCs calculated by Joinpoint over the time range of 1975-2005.

The APC/AAPC is significantly different from zero ($p < .05$).

a
b
c
*

Table VI-2
COLON CANCER (Invasive) AND RECTUM CANCER (Invasive)

TRENDS IN SEER INCIDENCE^a USING THE JOINPOINT REGRESSION PROGRAM, 1975-2005
WITH UP TO THREE JOINPOINTS BY RACE AND SEX

		<u>Joinpoint Trend 1</u>		<u>Joinpoint Trend 2</u>		<u>Joinpoint Trend 3</u>		<u>Joinpoint Trend 4</u>		<u>AAPC^b</u>	
		<u>Years</u>	<u>APC</u>	<u>Years</u>	<u>APC</u>	<u>Years</u>	<u>APC</u>	<u>Years</u>	<u>APC</u>	<u>1996-2005</u>	<u>2001-2005</u>
<u>SEER Cancer Incidence for Colon^a</u>											
All Races	Both Sexes	1975-1985	1.1*	1985-1995	-1.6*	1995-2001	-0.3	2001-2005	-3.8*	-1.9*	-3.8*
All Races	Male	1975-1985	1.7*	1985-2002	-1.5*	2002-2005	-4.4*			-2.4*	-3.7*
All Races	Female	1975-1985	0.6*	1985-1993	-1.8*	1993-2001	-0.2	2001-2005	-3.4*	-1.7*	-3.4*
White	Both Sexes	1975-1985	1.1*	1985-1995	-1.9*	1995-1998	1.3	1998-2005	-2.6*	-1.8*	-2.6*
White	Male	1975-1986	1.6*	1986-1995	-2.2*	1995-1998	0.9	1998-2005	-3.1*	-2.2*	-3.1*
White	Female	1975-1985	0.6*	1985-1993	-2.1*	1993-2001	-0.2	2001-2005	-3.6*	-1.7*	-3.6*
Black	Both Sexes	1975-1990	0.8*	1990-2005	-0.8*					-0.8*	-0.8*
Black	Male	1975-1989	1.6*	1989-2005	-0.9*					-0.9*	-0.9*
Black	Female	1975-2005	-0.2							-0.2	-0.2
<u>SEER Cancer Incidence for Rectum^a</u>											
All Races	Both Sexes	1975-1983	0.9	1983-2005	-2.5*	1995-1998	2.9	1998-2005	-2.8*	-2.5*	-2.5*
All Races	Male	1975-1984	0.3	1984-2005	-3.0*	1994-1999	1.1	1999-2005	-3.3*	-3.0*	-3.0*
All Races	Female	1975-1987	0.1	1987-2005	-2.2*	1995-1998	2.8	1998-2005	-2.9*	-2.2*	-2.2*
White	Both Sexes	1975-1985	0.2	1985-2005	-2.5*	1995-1998	2.6	1998-2005	-3.0*	-2.5*	-2.5*
White	Male	1975-1984	-0.1	1984-2005	-2.8*	1994-1999	1.1	1999-2005	-3.5*	-2.8*	-2.8*
White	Female	1975-1986	0.6	1986-2005	-2.2*	1995-1998	3.0	1998-2005	-3.3*	-2.2*	-2.2*
Black	Both Sexes	1975-1977	32.7	1977-1996	-1.9*	1996-2005	-6.1*			-6.1*	-6.1*
Black	Male	1975-1977	54.6*	1977-1998	-2.3*	1998-2005	-9.2*			-7.7*	-9.2*
Black	Female	1975-2005	-1.7*							-1.7*	-1.7*

Joinpoint Regression Program Version 3.3.1, April 2008, National Cancer Institute. (<http://srab.cancer.gov/joinpoint/>).
 The APC is the Annual Percent Change based on rates age-adjusted to the 2000 US Std Population (19 age groups - Census P25-1130).
 Trends are from the SEER 9 areas (San Francisco, Connecticut, Detroit, Hawaii, Iowa, New Mexico, Seattle, Utah, and Atlanta).
 The AAPC is the Average Annual Percent Change and is based on the APCs calculated by Joinpoint over the time range of 1975-2005.
 The APC/AAPC is significantly different from zero ($p < .05$).

a
 b
 *

Table VI-2a
COLON CANCER (Invasive) AND RECTUM CANCER (Invasive)

TRENDS IN SEER INCIDENCE^a USING THE JOINTPOINT REGRESSION PROGRAM, 1975-2005
WITH UP TO FOUR JOINTPOINTS BY RACE AND SEX

		<u>Joinpoint Trend 1</u>		<u>Joinpoint Trend 2</u>		<u>Joinpoint Trend 3</u>		<u>Joinpoint Trend 4</u>		<u>Joinpoint Trend 5</u>		<u>AAPC^c</u>
		<u>Years</u>	<u>APC</u>	<u>Years</u>	<u>APC</u>	<u>Years</u>	<u>APC</u>	<u>Years</u>	<u>APC</u>	<u>Years</u>	<u>APC</u>	<u>2001-2005</u>
<u>SEER Cancer Incidence for Colon^a</u>												
All Races	Both Sexes	1975-1985	1.2*	1985-1995	-1.7*	1995-1998	0.6	1998-2002	-1.5	2002-2005	-4.1*	-3.4*
All Races	Male	1975-1985	1.7*	1985-2002	-1.5*	2002-2005	-4.4*					-3.7*
All Races	Female	1975-1985	0.6*	1985-1993	-1.8*	1993-2001	-0.2	2001-2005	-3.4*			-3.4*
White	Both Sexes	1975-1985	1.1*	1985-1995	-1.9*	1995-1998	1.3	1998-2005	-2.6*			-2.6*
White	Male	1975-1985	1.7*	1985-1991	-1.4*	1991-1995	-3.1*	1995-1998	1.5	1998-2005	-3.1*	-3.1*
White	Female	1975-1985	0.6*	1985-1993	-2.1*	1993-2001	-0.2	2001-2005	-3.6*			-3.6*
Black	Both Sexes	1975-1990	0.8*	1990-2005	-0.8*							-0.8*
Black	Male	1975-1989	1.6*	1989-2005	-0.9*							-0.9*
Black	Female	1975-2005	-0.2									-0.2
<u>SEER Cancer Incidence for Rectum^a</u>												
All Races	Both Sexes	1975-1983	0.9	1983-2005	-2.5*	1995-1998	2.9	1998-2005	-2.8*			-2.5*
All Races	Male	1975-1984	0.3	1984-2005	-3.0*	1994-1999	1.1	1999-2005	-3.3*			-3.0*
All Races	Female	1975-1987	0.1	1987-2005	-2.2*	1995-1998	2.8	1998-2005	-2.9*			-2.2*
White	Both Sexes	1975-1985	0.2	1985-2005	-2.5*	1995-1998	2.6	1998-2005	-3.0*			-2.5*
White	Male	1975-1984	-0.1	1984-2005	-2.8*	1994-1999	1.1	1999-2005	-3.5*			-2.8*
White	Female	1975-1986	0.6	1986-2005	-2.2*	1995-1998	3.0	1998-2005	-3.3*			-2.2*
Black	Both Sexes	1975-1977	32.7	1977-1996	-1.9*	1996-2005	-6.1*					-6.1*
Black	Male	1975-1977	54.6*	1977-1998	-2.3*	1998-2005	-9.2*					-9.2*
Black	Female	1975-2005	-1.7*									-1.7*

Joinpoint Regression Program Version 3.3.1, April 2008, National Cancer Institute. (<http://srab.cancer.gov/joinpoint/>).

The APC is the Annual Percent Change based on rates age-adjusted to the 2000 US Std Population (19 age groups - Census P25-1130). Trends are from the SEER 9 areas (San Francisco, Connecticut, Detroit, Hawaii, Iowa, New Mexico, Seattle, Utah, and Atlanta).

The AAPC is the Average Annual Percent Change and is based on the APCs calculated by Joinpoint over the time range of 1975-2005.

The APC/AAPC is significantly different from zero ($p < .05$).

^a
^b
^{*}

Table VI-3
COLON AND RECTUM CANCER (Invasive)

AGE ADJUSTED SEER INCIDENCE^a RATES BY YEAR, RACE AND SEX

	All Races			Whites			Blacks		
	Total	Males	Females	Total	Males	Females	Total	Males	Females
<u>AGE-ADJUSTED RATES</u>									
YEAR OF DIAGNOSIS:									
1975	59.5	68.4	53.6	60.2	69.8	54.0	56.9	59.3	54.7
1976	61.4	71.7	54.1	62.1	72.7	55.0	55.1	58.5	51.3
1977	62.4	73.5	55.0	63.2	74.3	55.8	60.7	75.8	51.5
1978	62.0	72.4	55.2	62.8	73.9	55.6	62.2	65.7	60.6
1979	62.4	74.1	54.6	62.9	75.2	54.9	58.6	61.6	56.3
1980	63.7	74.5	56.5	64.0	74.9	56.8	70.8	79.7	64.1
1981	64.2	75.8	56.5	64.9	76.7	57.1	62.8	72.8	55.9
1982	62.8	75.2	54.5	63.5	76.3	55.1	61.3	69.0	55.9
1983	63.7	75.6	55.6	64.3	76.6	56.1	66.7	75.5	61.1
1984	64.8	77.7	56.1	65.8	79.3	56.7	62.3	70.3	58.0
1985	66.3	79.1	57.4	67.2	80.2	58.4	63.9	74.1	56.3
1986	64.2	77.8	54.7	64.6	78.9	54.7	64.5	72.9	58.6
1987	62.7	77.5	52.6	62.9	78.2	52.6	66.2	77.5	59.0
1988	61.4	75.2	51.8	61.5	75.7	51.7	63.1	72.4	56.9
1989	61.7	74.9	52.4	61.9	75.4	52.7	64.3	79.2	54.6
1990	60.7	74.3	51.3	60.7	74.7	51.0	66.6	74.7	61.6
1991	59.5	72.9	50.0	59.3	73.1	49.7	65.6	76.3	58.2
1992	58.0	70.4	49.2	57.8	70.7	48.7	65.4	78.3	57.3
1993	56.8	68.4	48.3	56.3	68.1	47.8	64.3	77.9	55.1
1994	55.6	66.3	47.7	55.4	66.3	47.1	64.3	75.0	57.9
1995	54.0	63.7	46.9	53.7	63.4	46.6	62.0	71.2	56.2
1996	54.7	65.4	46.7	54.7	65.8	46.4	58.3	66.6	52.6
1997	56.3	68.0	47.9	56.4	67.9	48.0	64.1	76.9	55.8
1998	56.7	66.9	49.2	56.6	67.1	49.0	62.7	73.8	55.9
1999	55.4	65.6	47.8	55.2	65.7	47.2	62.9	71.8	57.8
2000	54.0	63.6	46.6	53.7	63.0	46.4	63.9	73.6	57.6
2001	53.3	62.5	46.0	52.6	62.1	45.2	63.6	74.0	56.9
2002	52.7	60.8	46.3	51.9	59.6	45.7	62.1	72.9	55.3
2003	50.2	58.7	43.4	49.7	57.9	43.0	60.8	73.1	53.1
2004	49.1	57.7	42.5	48.4	57.2	41.3	60.6	71.5	53.3
2005	46.4	53.4	40.9	46.2	53.4	40.3	54.9	60.3	51.7
1975-2005	57.9	68.7	50.1	58.1	69.1	50.1	62.5	72.2	56.2

^a SEER 9 areas (San Francisco, Connecticut, Detroit, Hawaii, Iowa, New Mexico, Seattle, Utah, and Atlanta). Rates are per 100,000 and are age-adjusted to the 2000 US Std Population (19 age groups - Census P25-1130).

- Statistic not shown. Rate based on less than 16 cases for the time interval.

Table VI-4
COLON CANCER (Invasive)

AGE ADJUSTED SEER INCIDENCE^a RATES BY YEAR, RACE AND SEX

	All Races			Whites			Blacks		
	Total	Males	Females	Total	Males	Females	Total	Males	Females
<u>AGE-ADJUSTED RATES</u>									
YEAR OF DIAGNOSIS:									
1975	41.3	45.4	38.9	41.7	46.1	39.1	42.8	44.1	41.6
1976	43.1	47.8	39.9	43.4	48.2	40.4	43.1	43.6	42.0
1977	44.0	49.6	40.4	44.7	50.1	41.2	45.4	58.4	37.7
1978	43.8	49.1	40.6	44.1	49.9	40.6	47.8	48.8	47.9
1979	43.8	50.2	39.6	44.1	51.0	39.7	44.7	45.6	44.0
1980	45.6	50.7	42.3	45.6	50.9	42.3	55.1	58.3	52.7
1981	45.5	51.3	41.7	45.9	52.0	42.1	46.9	50.6	44.4
1982	45.8	53.5	40.7	46.1	54.1	40.8	48.3	52.5	45.2
1983	46.1	53.0	41.6	46.4	53.5	41.9	50.2	58.5	45.2
1984	46.5	54.6	41.3	47.0	55.6	41.6	48.6	54.0	45.8
1985	47.9	55.0	43.0	48.4	55.6	43.7	49.9	57.3	44.2
1986	46.8	54.4	41.6	47.1	55.2	41.5	49.2	55.0	45.5
1987	45.2	54.4	39.2	45.1	54.5	39.1	51.3	59.8	45.7
1988	44.3	52.6	38.7	44.2	52.8	38.4	48.9	54.0	45.6
1989	44.4	52.4	38.9	44.5	52.5	39.2	48.9	60.3	41.5
1990	44.2	51.9	38.9	44.0	52.0	38.8	52.0	57.7	48.6
1991	43.6	51.8	37.9	43.3	51.9	37.4	51.7	57.7	47.7
1992	42.3	49.7	37.2	42.1	49.8	36.7	50.8	60.2	45.2
1993	41.6	48.9	36.3	41.1	48.6	35.7	51.1	60.4	45.0
1994	40.8	46.9	36.3	40.6	47.1	35.8	49.9	56.7	46.2
1995	39.6	45.0	35.8	39.3	44.6	35.5	48.8	54.8	45.4
1996	39.3	45.3	34.9	39.3	45.7	34.4	44.5	48.4	41.9
1997	41.1	48.4	35.9	41.1	48.3	36.1	48.9	58.6	42.4
1998	41.0	46.7	37.0	40.9	47.0	36.5	47.5	54.4	43.9
1999	39.7	45.3	35.6	39.5	45.3	35.1	48.2	54.7	44.5
2000	39.3	44.3	35.4	38.9	43.9	35.1	50.7	57.1	46.8
2001	39.0	43.8	35.3	38.6	43.5	34.7	48.5	55.1	44.3
2002	38.3	42.8	34.8	37.6	41.7	34.3	48.7	56.2	44.0
2003	36.5	40.9	33.0	36.2	40.3	32.8	46.4	54.9	41.1
2004	35.8	40.7	32.0	35.2	40.5	31.2	46.1	52.7	41.8
2005	33.5	36.8	31.0	33.3	36.9	30.4	42.1	45.1	40.7
1975-2005	41.8	47.8	37.5	41.8	48.0	37.5	48.2	54.5	44.3

^a SEER 9 areas (San Francisco, Connecticut, Detroit, Hawaii, Iowa, New Mexico, Seattle, Utah, and Atlanta). Rates are per 100,000 and are age-adjusted to the 2000 US Std Population (19 age groups - Census P25-1130).

- Statistic not shown. Rate based on less than 16 cases for the time interval.

Table VI-5
RECTUM CANCER (Invasive)

AGE ADJUSTED SEER INCIDENCE^a RATES BY YEAR, RACE AND SEX

	All Races			Whites			Blacks		
	Total	Males	Females	Total	Males	Females	Total	Males	Females
<u>AGE-ADJUSTED RATES</u>									
YEAR OF DIAGNOSIS:									
1975	18.2	23.0	14.8	18.5	23.6	14.9	14.0	15.2	13.0
1976	18.3	24.0	14.2	18.7	24.5	14.6	12.0	14.9	9.4
1977	18.4	23.9	14.6	18.5	24.3	14.6	15.3	17.3	13.8
1978	18.2	23.2	14.7	18.7	24.0	15.0	14.4	16.9	12.8
1979	18.6	23.9	15.0	18.8	24.2	15.2	13.9	16.1	12.3
1980	18.2	23.9	14.2	18.4	24.0	14.5	15.6	21.4	11.4
1981	18.8	24.5	14.8	19.0	24.8	15.0	15.9	22.2	11.6
1982	17.0	21.7	13.8	17.4	22.2	14.2	13.0	16.5	10.7
1983	17.6	22.6	14.0	17.9	23.1	14.2	16.5	17.0	15.9
1984	18.3	23.1	14.8	18.8	23.7	15.1	13.7	16.2	12.1
1985	18.4	24.1	14.4	18.8	24.6	14.7	14.0	16.8	12.1
1986	17.4	23.4	13.1	17.5	23.7	13.2	15.3	17.9	13.2
1987	17.5	23.1	13.5	17.7	23.7	13.5	14.9	17.6	13.3
1988	17.1	22.6	13.1	17.3	22.9	13.3	14.2	18.4	11.3
1989	17.3	22.5	13.5	17.5	22.9	13.5	15.5	18.9	13.1
1990	16.5	22.4	12.4	16.6	22.7	12.3	14.6	17.0	13.0
1991	15.9	21.0	12.1	16.0	21.2	12.3	13.9	18.5	10.5
1992	15.7	20.8	12.0	15.8	20.9	12.0	14.6	18.1	12.1
1993	15.2	19.5	12.0	15.3	19.5	12.2	13.2	17.5	10.1
1994	14.8	19.3	11.4	14.7	19.3	11.3	14.4	18.3	11.7
1995	14.4	18.7	11.1	14.4	18.7	11.1	13.2	16.3	10.7
1996	15.4	20.1	11.8	15.4	20.1	12.0	13.8	18.2	10.7
1997	15.3	19.7	12.0	15.3	19.6	11.9	15.2	18.3	13.4
1998	15.7	20.2	12.2	15.7	20.1	12.4	15.2	19.4	12.0
1999	15.7	20.3	12.2	15.7	20.4	12.1	14.7	17.0	13.2
2000	14.7	19.2	11.2	14.8	19.1	11.3	13.2	16.5	10.8
2001	14.3	18.8	10.7	14.0	18.6	10.4	15.1	18.9	12.5
2002	14.3	18.0	11.4	14.3	17.9	11.4	13.4	16.7	11.4
2003	13.6	17.8	10.4	13.5	17.7	10.1	14.4	18.2	12.0
2004	13.3	17.0	10.4	13.1	16.7	10.1	14.5	18.8	11.5
2005	12.9	16.7	9.9	12.8	16.5	9.8	12.7	15.2	11.0
1975-2005	16.1	20.9	12.6	16.2	21.1	12.7	14.3	17.7	11.9

^a SEER 9 areas (San Francisco, Connecticut, Detroit, Hawaii, Iowa, New Mexico, Seattle, Utah, and Atlanta). Rates are per 100,000 and are age-adjusted to the 2000 US Std Population (19 age groups - Census P25-1130).

- Statistic not shown. Rate based on less than 16 cases for the time interval.

Table VI-6
COLON AND RECTUM CANCER (Invasive)

AGE-ADJUSTED U.S. DEATH^a RATES BY YEAR, RACE AND SEX

	All Races			Whites			Blacks		
	Total	Males	Females	Total	Males	Females	Total	Males	Females
<u>AGE-ADJUSTED RATES</u>									
YEAR OF DEATH:									
1975	28.1	32.8	25.0	28.3	33.2	25.1	26.8	30.1	24.6
1976	28.6	33.3	25.4	28.7	33.8	25.5	28.2	31.2	26.3
1977	28.2	33.2	24.9	28.3	33.5	25.0	27.6	31.4	24.9
1978	28.5	33.7	25.1	28.7	34.1	25.2	27.9	31.2	25.7
1979	28.1	33.6	24.6	28.2	33.9	24.6	28.2	31.6	26.0
1980	28.1	33.7	24.4	28.1	34.0	24.3	28.8	33.2	25.9
1981	27.5	33.0	24.0	27.5	33.2	23.9	28.9	32.8	26.3
1982	27.2	33.0	23.6	27.2	33.1	23.4	29.1	33.7	26.1
1983	27.1	33.1	23.2	27.1	33.3	23.1	28.7	32.9	25.8
1984	27.3	33.0	23.6	27.3	33.1	23.5	29.6	34.6	26.2
1985	26.9	32.7	23.1	26.8	32.7	22.8	30.5	34.1	28.0
1986	26.2	32.1	22.3	26.0	32.0	22.1	29.8	35.4	26.3
1987	25.9	31.9	22.0	25.7	31.8	21.6	29.8	35.1	26.5
1988	25.3	31.1	21.5	25.1	31.0	21.2	29.2	34.3	25.9
1989	25.0	30.8	21.2	24.7	30.5	20.8	30.1	36.4	26.1
1990	24.6	30.8	20.6	24.3	30.4	20.2	30.8	37.6	26.6
1991	24.0	29.6	20.3	23.6	29.4	19.8	30.0	35.8	26.5
1992	23.6	29.3	19.9	23.2	29.0	19.4	29.5	36.2	25.4
1993	23.3	28.6	19.8	22.9	28.2	19.3	29.8	35.8	26.0
1994	22.9	28.3	19.3	22.5	27.9	18.8	29.0	35.7	24.9
1995	22.6	27.7	19.1	22.1	27.2	18.6	29.5	36.3	25.5
1996	21.9	26.7	18.5	21.4	26.3	18.0	28.6	34.5	24.9
1997	21.5	26.2	18.1	20.9	25.7	17.6	28.8	35.1	24.8
1998	21.2	25.6	18.0	20.7	25.1	17.5	28.3	33.9	24.8
1999	20.9	25.5	17.8	20.4	25.0	17.2	28.5	34.5	24.7
2000	20.6	25.0	17.5	20.1	24.4	17.0	28.1	34.9	23.9
2001	20.1	24.2	17.1	19.5	23.7	16.5	27.7	33.2	24.2
2002	19.6	23.8	16.5	19.1	23.2	16.0	26.9	33.4	22.8
2003	19.0	23.0	16.0	18.5	22.4	15.5	26.4	32.1	22.7
2004	17.9	21.6	15.2	17.5	21.1	14.7	24.8	30.3	21.2
2005	17.4	21.0	14.6	16.8	20.4	14.1	24.9	30.4	21.2
1975-2005	23.6	28.6	20.3	23.4	28.4	20.0	28.5	33.8	25.1

^a US Mortality Files, National Center for Health Statistics, Centers for Disease Control and Prevention. Rates are per 100,000 and are age-adjusted to the 2000 US Std Population (19 age groups - Census P25-1130).

- Statistic not shown. Rate based on less than 16 cases for the time interval.

Table VI-7
COLON AND RECTUM CANCER (Invasive)

SEER INCIDENCE^a AND U.S. DEATH^b RATES, AGE-ADJUSTED AND AGE-SPECIFIC RATES, BY RACE AND SEX

	All Races			Whites			Blacks		
	Total	Males	Females	Total	Males	Females	Total	Males	Females
<u>SEER INCIDENCE</u>									
<u>AGE AT DIAGNOSIS</u>									
AGE-ADJUSTED RATES, 2001-2005									
All ages	50.6	59.2	43.8	50.1	58.9	43.2	61.2	71.2	54.5
Under 65	18.4	21.1	15.8	17.8	20.5	15.1	24.9	27.8	22.5
65 and over	273.0	322.9	237.0	274.0	324.5	237.3	312.1	371.2	275.6
All ages(IARC world std) ^c	31.0	36.4	26.5	30.6	36.0	25.9	38.8	44.8	34.5
AGE-SPECIFIC RATES, 2001-2005									
<1	-	-	-	-	-	-	-	-	-
1-4	-	-	-	-	-	-	-	-	-
5-9	-	-	-	-	-	-	-	-	-
10-14	0.1	-	-	0.1	-	-	-	-	-
15-19	0.3	0.3	0.3	0.3	0.2	0.3	-	-	-
20-24	0.8	0.7	0.9	0.9	0.8	0.9	0.8	-	1.0
25-29	1.9	2.0	1.8	1.9	2.0	1.7	1.3	1.2	1.5
30-34	3.9	4.0	3.9	3.9	4.0	3.8	4.1	3.7	4.4
35-39	7.8	8.4	7.2	7.6	8.1	7.0	8.7	9.6	7.8
40-44	14.3	14.8	13.9	13.8	14.1	13.5	17.6	18.9	16.5
45-49	27.7	29.8	25.7	26.6	28.9	24.3	35.5	36.7	34.4
50-54	53.5	60.9	46.4	51.1	58.7	43.6	75.4	82.5	69.3
55-59	78.5	92.9	65.0	75.3	89.7	61.4	110.5	127.5	96.4
60-64	119.1	144.2	96.2	116.3	141.9	92.4	168.9	195.5	147.6
65-69	179.0	215.7	147.3	177.3	213.9	145.0	220.6	261.1	189.7
70-74	237.6	290.5	195.2	238.1	292.0	194.1	277.8	328.7	242.2
75-79	305.3	363.4	263.8	306.7	363.8	265.6	353.1	424.2	309.2
80-84	364.2	421.1	328.5	367.3	425.4	331.0	407.9	491.1	362.5
85+	392.1	442.5	369.0	397.0	451.1	372.5	403.3	471.6	375.6
<u>U.S. MORTALITY</u>									
<u>AGE AT DEATH</u>									
AGE-ADJUSTED RATES, 2001-2005									
All ages	18.8	22.7	15.9	18.3	22.1	15.3	26.1	31.8	22.4
Under 65	5.3	6.2	4.4	4.9	5.9	4.0	8.6	10.1	7.3
65 and over	112.1	136.3	95.4	110.3	134.3	93.5	147.2	181.6	126.8
All ages(IARC world std) ^c	10.5	12.8	8.7	10.2	12.4	8.3	15.3	18.7	13.0
AGE-SPECIFIC RATES, 2001-2005									
<1	-	-	-	-	-	-	-	-	-
1-4	-	-	-	-	-	-	-	-	-
5-9	-	-	-	-	-	-	-	-	-
10-14	-	-	-	-	-	-	-	-	-
15-19	0.1	0.1	0.0	0.1	0.1	0.0	-	-	-
20-24	0.2	0.2	0.1	0.2	0.2	0.1	0.2	0.3	-
25-29	0.5	0.5	0.4	0.4	0.5	0.4	0.5	0.6	0.5
30-34	1.0	1.0	0.9	0.9	1.0	0.9	1.3	1.5	1.1
35-39	2.0	2.1	1.8	1.9	2.1	1.7	2.9	2.9	2.9
40-44	3.9	4.3	3.5	3.6	4.0	3.2	6.2	6.8	5.7
45-49	7.7	8.7	6.8	7.0	8.0	6.1	13.2	14.7	12.0
50-54	14.0	16.3	11.8	13.0	15.2	10.8	23.6	27.4	20.4
55-59	23.1	28.0	18.4	21.7	26.6	17.0	38.8	46.5	32.5
60-64	37.5	46.4	29.4	35.7	44.3	27.7	58.8	73.7	47.1
65-69	57.7	73.0	44.4	55.8	70.8	42.4	84.0	106.3	67.4
70-74	82.4	102.7	66.1	80.5	100.7	63.9	114.6	142.9	95.4
75-79	114.6	142.3	94.8	112.3	139.3	92.8	156.5	201.3	129.7
80-84	158.0	192.1	137.1	156.1	190.2	135.1	203.6	252.8	177.9
85+	236.5	270.5	221.5	235.7	270.3	220.5	273.0	311.1	258.2

^a SEER 17 areas. Rates are per 100,000 and are age-adjusted to the 2000 US Std Population (19 age groups - Census P25-1130), unless noted.

^b US Mortality Files, National Center for Health Statistics, Centers for Disease Control and Prevention. Rates are per 100,000 and are age-adjusted to the 2000 US Std Population (19 age groups - Census P25-1130), unless noted.

^c Rates are per 100,000 and are age-adjusted to the IARC world standard population.

- Statistic not shown. Rate based on less than 16 cases for the time interval.

Table VI-8
 COLON CANCER (Invasive) and RECTUM CANCER (Invasive)

SEER INCIDENCE^a RATES, AGE-ADJUSTED AND AGE-SPECIFIC RATES, BY RACE AND SEX

	All Races			Whites			Blacks		
	Total	Males	Females	Total	Males	Females	Total	Males	Females
<u>COLON INCIDENCE</u>									
<u>AGE AT DIAGNOSIS</u>									
AGE-ADJUSTED RATES, 2001-2005									
All ages	36.6	41.4	32.9	36.2	41.1	32.4	47.0	53.7	42.7
Under 65	11.8	13.0	10.6	11.3	12.6	10.0	17.7	19.1	16.5
65 and over	207.8	237.4	186.7	208.3	237.9	187.0	249.9	292.8	223.7
All ages(IARC world std) ^b	21.7	24.6	19.4	21.3	24.3	18.9	29.3	33.0	26.7
AGE-SPECIFIC RATES, 2001-2005									
<1	-	-	-	-	-	-	-	-	-
1-4	-	-	-	-	-	-	-	-	-
5-9	-	-	-	-	-	-	-	-	-
10-14	0.1	-	-	0.1	-	-	-	-	-
15-19	0.2	0.2	0.2	0.2	0.2	0.3	-	-	-
20-24	0.5	0.5	0.6	0.6	0.6	0.6	0.6	-	-
25-29	1.2	1.2	1.1	1.2	1.3	1.1	0.8	-	-
30-34	2.5	2.5	2.5	2.5	2.5	2.4	2.9	2.5	3.3
35-39	4.7	4.8	4.5	4.5	4.6	4.3	5.4	5.7	5.2
40-44	8.8	8.8	8.7	8.4	8.4	8.3	11.7	12.6	10.9
45-49	17.0	17.4	16.6	16.1	16.8	15.4	24.4	23.6	25.1
50-54	33.2	36.2	30.4	31.4	34.7	28.1	52.1	54.3	50.2
55-59	50.6	57.7	44.0	48.3	55.8	41.1	79.4	88.9	71.6
60-64	80.9	93.8	69.0	78.4	91.8	65.9	125.6	141.8	112.7
65-69	126.8	146.5	109.7	124.6	144.1	107.4	170.8	196.7	151.0
70-74	176.2	207.7	151.0	176.2	208.3	150.0	218.6	253.0	194.6
75-79	232.1	267.8	206.8	233.3	267.2	208.8	282.2	336.7	248.4
80-84	288.0	322.6	266.3	290.4	325.4	268.5	328.7	391.3	294.4
85+	317.4	348.0	303.3	321.4	354.1	306.6	341.6	396.6	319.3
<u>RECTUM INCIDENCE</u>									
<u>AGE AT DIAGNOSIS</u>									
AGE-ADJUSTED RATES, 2001-2005									
All ages	14.0	17.9	10.9	13.9	17.8	10.8	14.2	17.5	11.8
Under 65	6.6	8.1	5.2	6.5	7.9	5.1	7.2	8.7	6.0
65 and over	65.1	85.5	50.4	65.7	86.6	50.3	62.3	78.4	51.9
All ages(IARC world std) ^b	9.3	11.8	7.1	9.2	11.7	7.0	9.6	11.8	7.9
AGE-SPECIFIC RATES, 2001-2005									
<1	-	-	-	-	-	-	-	-	-
1-4	-	-	-	-	-	-	-	-	-
5-9	-	-	-	-	-	-	-	-	-
10-14	-	-	-	-	-	-	-	-	-
15-19	0.1	-	-	-	-	-	-	-	-
20-24	0.3	0.2	0.3	0.3	0.3	0.3	-	-	-
25-29	0.7	0.7	0.7	0.7	0.8	0.7	0.6	-	-
30-34	1.5	1.5	1.4	1.4	1.5	1.4	1.2	1.3	1.1
35-39	3.2	3.6	2.7	3.1	3.5	2.7	3.2	3.9	2.6
40-44	5.6	6.0	5.2	5.4	5.7	5.1	5.9	6.3	5.6
45-49	10.7	12.3	9.1	10.5	12.1	8.9	11.1	13.1	9.3
50-54	20.3	24.7	16.0	19.7	23.9	15.5	23.3	28.2	19.2
55-59	27.9	35.2	21.1	27.0	34.0	20.4	31.0	38.6	24.8
60-64	38.2	50.4	27.2	37.9	50.1	26.5	43.2	53.7	34.9
65-69	52.2	69.2	37.6	52.7	69.8	37.6	49.8	64.4	38.7
70-74	61.4	82.8	44.2	61.9	83.6	44.1	59.2	75.7	47.6
75-79	73.1	95.6	57.1	73.4	96.6	56.8	71.0	87.5	60.7
80-84	76.2	98.5	62.3	76.9	100.0	62.5	79.3	99.7	68.1
85+	74.8	94.4	65.7	75.6	97.0	65.9	61.7	75.0	56.3

^a SEER 17 areas. Rates are per 100,000 and are age-adjusted to the 2000 US Std Population (19 age groups - Census P25-1130), unless noted.

^b Rates are per 100,000 and are age-adjusted to the IARC world standard population.

- Statistic not shown. Rate based on less than 16 cases for the time interval.

Table VI-9
COLON AND RECTUM CANCER (Invasive)

SURVIVAL RATES, BY RACE, SEX, DIAGNOSIS YEAR, STAGE AND AGE

	All Races			Whites			Blacks		
	Total	Males	Females	Total	Males	Females	Total	Males	Females
5-YR RELATIVE SURVIVAL RATES									
YEAR OF DIAGNOSIS:									
1960-1963 ^a	-	-	-	-	-	-	-	-	-
1970-1973 ^a	-	-	-	-	-	-	-	-	-
1975-1977 ^b	50.8	49.8	51.7	50.9	50.1	51.7	46.1	44.4	47.1
1978-1980 ^b	52.5	51.5	53.4	52.9	51.9	53.8	46.2	44.3	47.5
1981-1983 ^b	55.4	55.2	55.7	55.8	55.8	55.9	47.5	43.9	50.3
1984-1986 ^b	58.5	58.4	58.6	59.2	59.2	59.3	49.1	48.2	49.8
1987-1989 ^b	60.6	60.9	60.4	61.1	61.6	60.6	53.4	51.2	55.3
1990-1992 ^b	62.4	62.4	62.4	63.2	63.1	63.2	53.8	55.5	52.3
1993-1995 ^b	60.9	60.4	61.4	61.5	61.0	62.1	52.9	51.7	53.9
1996-2004 ^b	65.3 ^e	65.4 ^e	65.2 ^e	66.3 ^e	66.4 ^e	66.2 ^e	56.0 ^e	56.1 ^e	55.9 ^e
5-YR PERIOD SURVIVAL RATES^{cd}									
YEAR OF DIAGNOSIS:									
1996-2004	65.4	65.6	65.3	66.3	66.5	66.1	57.0	57.1	57.0
STAGE DISTRIBUTION (%) 1996-2004^c									
All Stages									
Number of cases	204,212	103,110	101,102	166,480	84,530	81,950	20,392	9,435	10,957
Percent	100%	100%	100%	100%	100%	100%	100%	100%	100%
Localized	40	40	39	40	41	39	35	36	35
Regional	36	36	37	36	36	37	34	34	35
Distant	19	20	19	19	19	19	24	25	24
Unstaged	5	4	5	5	4	5	6	6	7
5-YR RELATIVE SURVIVAL RATES, 1996-2004^c									
AGE AT DIAGNOSIS:									
<45	66.3	65.8	66.8	68.2	67.2	69.4	57.4	57.9	56.9
45-54	67.7	66.9	68.7	68.8	67.8	70.0	58.9	57.8	60.1
55-64	66.7	66.4	67.3	67.8	67.4	68.4	57.1	56.2	58.2
65-74	66.0	65.5	66.6	66.8	66.2	67.3	57.2	56.5	57.8
75+	59.6	59.9	59.4	60.7	61.2	60.3	46.3	44.3	47.4
Under 65	67.0	66.4	67.6	68.2	67.5	69.1	57.8	57.0	58.6
65 and over	62.8	63.1	62.6	63.6	64.0	63.3	52.3	51.7	52.7
STAGE:									
All Stages	64.4	64.5	64.3	65.3	65.4	65.2	55.1	54.7	55.5
Localized	89.7	89.7	89.8	90.3	90.3	90.2	84.4	83.6	85.1
Regional	68.4	68.4	68.5	69.2	69.3	69.2	61.2	61.6	60.9
Distant	10.8	10.5	11.2	11.1	10.6	11.6	8.3	8.3	8.2
Unstaged	36.6	39.9	33.6	36.0	39.8	32.5	33.7	33.4	33.5

^a Rates are based on End Results data from a series of hospital registries and one population-based registry.

^b Rates are from the SEER 9 areas (San Francisco, Connecticut, Detroit, Hawaii, Iowa, New Mexico, Seattle, Utah, Atlanta).

Rates are based on follow-up of patients into 2005.

^c Rates are from the SEER 17 areas (San Francisco, Connecticut, Detroit, Hawaii, Iowa, New Mexico, Seattle, Utah, Atlanta, San Jose-Monterey, Los Angeles, Alaska Native Registry, Rural Georgia, California excluding SF/SJM/LA, Kentucky, Louisiana and New Jersey). California excluding SF/SJM/LA, Kentucky, Louisiana, and New Jersey contribute cases for diagnosis years 2000-2004. The remaining 13 SEER Areas contribute cases for the entire period 1996-2004. Rates are based on follow-up of patients into 2005.

^d Period survival provides a more up-to-date estimate of survival by piecing together the most recent conditional survival estimates from several cohorts. It is computed here using three calendar year blocks (2002-2004: 0-1 year survival), (2001-2003: 1-2 year survival), (2000-2002: 2-3 year survival), (1999-2001: 3-4 year survival), (1998-2000: 4-5 years survival).

^e The difference in rates between 1975-1977 and 1996-2004 is statistically significant ($p < .05$).

^f The standard error of the survival rate is between 5 and 10 percentage points.

^g The standard error of the survival rate is greater than 10 percentage points.

- Statistic could not be calculated due to fewer than 16 cases during the time period.

Table VI-10
COLON CANCER (Invasive)

SURVIVAL RATES, BY RACE, SEX, DIAGNOSIS YEAR, STAGE AND AGE

	All Races			Whites			Blacks		
	Total	Males	Females	Total	Males	Females	Total	Males	Females
<u>5-YR RELATIVE SURVIVAL RATES</u>									
YEAR OF DIAGNOSIS:									
1960-1963 ^a	-	-	-	43	42	44	34	32	35
1970-1973 ^a	-	-	-	49	47	50	37	36	38
1975-1977 ^b	51.5	50.8	52.0	51.7	51.0	52.2	46.4	45.5	46.8
1978-1980 ^b	53.5	52.5	54.3	53.7	52.6	54.6	49.6	48.0	50.6
1981-1983 ^b	56.5	57.0	56.0	56.7	57.5	56.1	49.7	45.9	52.4
1984-1986 ^b	59.1	59.5	58.7	59.8	60.2	59.4	49.9	49.6	50.1
1987-1989 ^b	61.3	61.9	60.7	61.7	62.5	61.0	53.3	51.7	54.5
1990-1992 ^b	63.2	63.6	62.7	64.0	64.4	63.5	54.2	55.9	52.9
1993-1995 ^b	60.8	60.6	60.9	61.4	61.2	61.6	52.3	51.3	52.9
1996-2004 ^b	64.8 ^e	65.1 ^e	64.6 ^e	66.0 ^e	66.3 ^e	65.7 ^e	55.0 ^e	55.5 ^e	54.6 ^e
<u>5-YR PERIOD SURVIVAL RATES^{cd}</u>									
YEAR OF DIAGNOSIS:									
1996-2004	64.9	65.4	64.4	65.9	66.3	65.4	56.8	57.5	56.3
<u>STAGE DISTRIBUTION (%) 1996-2004^c</u>									
All Stages									
Number of cases	144,938	69,771	75,167	118,208	57,275	60,933	15,375	6,853	8,522
Percent	100%	100%	100%	100%	100%	100%	100%	100%	100%
Localized	37	38	37	38	39	37	33	34	33
Regional	37	37	38	37	37	38	36	35	36
Distant	21	21	21	20	21	20	26	26	26
Unstaged	4	4	5	4	4	5	5	5	6
<u>5-YR RELATIVE SURVIVAL RATES, 1996-2004^c</u>									
AGE AT DIAGNOSIS:									
<45	65.3	66.7	63.7	67.4	67.2	67.7	56.8	61.9	52.4
45-54	65.1	64.9	65.3	66.3	66.0	66.6	56.9	55.5	58.2
55-64	65.6	65.4	65.7	66.8	66.7	67.0	56.0	55.9	56.2
65-74	65.9	65.8	66.0	66.7	66.5	66.9	57.6	57.5	57.7
75+	60.7	61.5	60.2	61.9	62.9	61.2	47.1	45.8	47.8
Under 65	65.4	65.4	65.3	66.7	66.6	66.9	56.4	56.6	56.3
65 and over	63.2	63.8	62.7	64.1	64.8	63.6	52.7	52.8	52.7
STAGE:									
All Stages	63.9	64.4	63.4	64.9	65.4	64.5	54.5	54.8	54.3
Localized	90.7	91.1	90.2	91.3	91.9	90.8	84.9	84.4	85.3
Regional	70.0	70.3	69.6	70.7	71.2	70.3	63.3	64.5	62.4
Distant	11.4	11.2	11.5	11.7	11.2	12.1	8.5	8.4	8.6
Unstaged	30.7	34.3	27.8	30.6	34.5	27.5	26.3	28.1	24.6

^a Rates are based on End Results data from a series of hospital registries and one population-based registry.
^b Rates are from the SEER 9 areas (San Francisco, Connecticut, Detroit, Hawaii, Iowa, New Mexico, Seattle, Utah, Atlanta).
Rates are based on follow-up of patients into 2005.
^c Rates are from the SEER 17 areas (San Francisco, Connecticut, Detroit, Hawaii, Iowa, New Mexico, Seattle, Utah, Atlanta, San Jose-Monterey, Los Angeles, Alaska Native Registry, Rural Georgia, California excluding SF/SJM/LA, Kentucky, Louisiana and New Jersey). California excluding SF/SJM/LA, Kentucky, Louisiana, and New Jersey contribute cases for diagnosis years 2000-2004. The remaining 13 SEER Areas contribute cases for the entire period 1996-2004. Rates are based on follow-up of patients into 2005.
^d Period survival provides a more up-to-date estimate of survival by piecing together the most recent conditional survival estimates from several cohorts. It is computed here using three calendar year blocks (2002-2004: 0-1 year survival), (2001-2003: 1-2 year survival), (2000-2002: 2-3 year survival), (1999-2001: 3-4 year survival), (1998-2000: 4-5 years survival).
^e The difference in rates between 1975-1977 and 1996-2004 is statistically significant (p<.05).
^f The standard error of the survival rate is between 5 and 10 percentage points.
^g The standard error of the survival rate is greater than 10 percentage points.
- Statistic could not be calculated due to fewer than 16 cases during the time period.

Table VI-11
RECTUM CANCER (Invasive)

SURVIVAL RATES, BY RACE, SEX, DIAGNOSIS YEAR, STAGE AND AGE

	All Races			Whites			Blacks		
	Total	Males	Females	Total	Males	Females	Total	Males	Females
<u>5-YR RELATIVE SURVIVAL RATES</u>									
YEAR OF DIAGNOSIS:									
1960-1963 ^a	-	-	-	38	36	41	27	28	27
1970-1973 ^a	-	-	-	45	43	48	30	20	40
1975-1977 ^b	49.2	48.1	50.7	49.4	48.4	50.6	44.9	41.7	47.5
1978-1980 ^b	50.4	49.8	51.1	51.3	50.7	51.9	35.6	35.1	35.9
1981-1983 ^b	53.0	51.5	54.8	53.8	52.3	55.4	40.6	38.3	42.9
1984-1986 ^b	57.3	56.4	58.4	58.0	57.3	58.9	46.4	43.9	48.8
1987-1989 ^b	59.1	58.9	59.5	59.7	59.8	59.5	53.6	49.3	57.8
1990-1992 ^b	60.5	59.7	61.5	61.3	60.4	62.4	52.2	54.1	49.8
1993-1995 ^b	61.2	59.9	62.9	61.7	60.4	63.2	54.8	52.1	57.9
1996-2004 ^b	66.5 ^e	66.0 ^e	67.2 ^e	67.2 ^e	66.8 ^e	67.7 ^e	58.9 ^e	57.7 ^e	60.1 ^e
<u>5-YR PERIOD SURVIVAL RATES^{cd}</u>									
YEAR OF DIAGNOSIS:									
1996-2004	66.6	65.9	67.4	67.3	66.9	67.7	57.6	55.9	59.2
<u>STAGE DISTRIBUTION (%) 1996-2004^c</u>									
All Stages									
Number of cases	59,274	33,339	25,935	48,272	27,255	21,017	5,017	2,582	2,435
Percent	100%	100%	100%	100%	100%	100%	100%	100%	100%
Localized	45	44	45	45	44	45	42	40	44
Regional	34	34	33	34	34	34	30	31	30
Distant	15	16	15	15	16	14	19	21	17
Unstaged	6	6	7	6	5	7	9	8	10
<u>5-YR RELATIVE SURVIVAL RATES, 1996-2004^c</u>									
AGE AT DIAGNOSIS:									
<45	67.8	64.5	71.9	69.5	67.1	72.4	58.5	51.1	67.5
45-54	71.8	69.7	74.8	72.6	70.3	76.0	63.5	61.8	65.2
55-64	69.0	67.9	70.7	69.7	68.6	71.6	60.1	56.7	64.0
65-74	66.5	65.1	68.3	66.9	65.7	68.6	55.8	52.8	58.3
75+	55.9	55.3	56.4	56.7	56.5	56.8	42.3	38.4	44.3
Under 65	69.8	68.0	72.4	70.7	69.0	73.3	61.0	57.7	65.1
65 and over	61.7	61.2	62.2	62.3	62.1	62.4	50.5	47.9	51.9
STAGE:									
All Stages	65.6	64.8	66.7	66.2	65.5	67.0	57.0	54.5	59.7
Localized	87.9	87.2	88.8	88.1	87.5	88.9	83.4	81.7	84.9
Regional	64.6	64.4	64.9	65.5	65.3	65.8	54.1	53.3	54.7
Distant	9.1	8.8	9.7	9.3	8.9	9.9	7.2	8.0	5.7
Unstaged	45.9	47.1	44.5	44.7	46.8	42.1	45.7	40.9	49.0

^a Rates are based on End Results data from a series of hospital registries and one population-based registry.

^b Rates are from the SEER 9 areas (San Francisco, Connecticut, Detroit, Hawaii, Iowa, New Mexico, Seattle, Utah, Atlanta).

Rates are based on follow-up of patients into 2005.

^c Rates are from the SEER 17 areas (San Francisco, Connecticut, Detroit, Hawaii, Iowa, New Mexico, Seattle, Utah, Atlanta, San Jose-Monterey, Los Angeles, Alaska Native Registry, Rural Georgia, California excluding SF/SJM/LA, Kentucky, Louisiana and New Jersey). California excluding SF/SJM/LA, Kentucky, Louisiana, and New Jersey contribute cases for diagnosis years 2000-2004. The remaining 13 SEER Areas contribute cases for the entire period 1996-2004. Rates are based on follow-up of patients into 2005.

^d Period survival provides a more up-to-date estimate of survival by piecing together the most recent conditional survival estimates from several cohorts. It is computed here using three calendar year blocks (2002-2004: 0-1 year survival), (2001-2003: 1-2 year survival), (2000-2002: 2-3 year survival), (1999-2001: 3-4 year survival), (1998-2000: 4-5 years survival).

^e The difference in rates between 1975-1977 and 1996-2004 is statistically significant ($p < .05$).

^f The standard error of the survival rate is between 5 and 10 percentage points.

^g The standard error of the survival rate is greater than 10 percentage points.

- Statistic could not be calculated due to fewer than 16 cases during the time period.

Table VI-12
COLON AND RECTUM CANCER (Invasive)

SURVIVAL RATES^a

By Year of Diagnosis

All Races, Males and Females

Year of Diagnosis

	1975- 1979	1980- 1984	1985	1986	1987	1988	1989	1990	1991	1992	1993	1994	1995	1996	1997	1998	1999	2000	2001	2002	2003	2004
Relative Survival Rates (SEER ^b)																						
1-year	74.8	78.1	80.0	81.3	80.9	80.3	81.4	81.9	82.6	81.8	80.9	81.7	80.2	81.9	81.0	82.6	82.8	82.6	83.7	83.9	83.1	84.2
2-year	63.8	67.9	70.9	72.1	72.0	71.9	72.5	73.5	74.0	73.4	72.9	73.1	72.0	74.0	73.1	75.3	75.3	75.2	76.5	77.7	76.7	
3-year	57.6	61.6	65.0	66.6	66.5	66.5	67.8	68.5	68.5	68.0	67.8	68.1	66.4	69.2	68.0	70.2	70.8	71.1	72.1	73.1		
4-year	53.9	57.7	61.4	62.9	62.5	63.0	63.9	64.4	65.1	64.4	63.8	64.0	62.7	65.7	65.1	67.3	67.8	67.9	69.3			
5-year	51.5	55.0	59.0	60.5	60.2	60.5	61.2	62.1	62.8	62.2	61.1	61.1	60.5	63.4	62.4	64.4	65.7	66.0				
6-year	49.8	53.1	57.3	58.5	58.6	58.9	59.9	60.8	60.7	60.7	59.5	59.5	58.2	62.1	60.7	62.8	64.5					
7-year	48.7	51.7	56.0	57.1	56.9	57.5	58.4	59.1	59.2	59.0	57.9	58.2	56.6	61.1	59.8	61.7						
8-year	47.9	50.8	55.2	56.0	56.3	56.6	57.3	57.7	58.0	57.5	56.9	57.3	56.1	60.5	59.1							
9-year	47.4	50.1	54.3	55.4	55.5	55.7	56.3	57.0	56.8	56.7	56.0	56.9	55.9	59.9								
10-year	46.8	49.5	53.7	55.0	54.7	54.8	55.5	56.4	56.2	56.0	55.5	55.9	55.6									
11-year	46.3	49.0	53.2	54.6	54.5	54.1	54.7	55.9	56.0	55.3	54.7	55.7										
12-year	45.9	48.6	53.0	54.4	53.9	53.3	54.4	55.6	55.9	55.3	54.0											
13-year	45.6	48.5	52.5	53.8	52.7	52.5	54.0	55.1	55.5	54.8												
14-year	45.2	48.0	52.1	53.2	52.7	52.2	54.0	54.7	55.2													
15-year	45.0	47.8	51.3	53.1	52.1	51.7	53.5	54.3														
16-year	44.7	47.3	51.1	52.5	51.8	51.7	53.2															
17-year	44.5	46.9	50.4	51.9	51.8	51.4																
18-year	44.2	46.6	50.1	51.6	51.6																	
19-year	44.2	46.3	49.9	51.3																		
20-year	44.2	46.0	48.8																			

^a Survival rates are relative rates expressed as percents.

^b Rates are from the SEER 9 areas (San Francisco, Connecticut, Detroit, Hawaii, Iowa, New Mexico, Seattle, Utah, and Atlanta).

Table VI-13
COLON AND RECTUM CANCER (Invasive)

SURVIVAL RATES^a

By Year of Diagnosis

All Races, Males

Year of Diagnosis

	1975- 1979	1980- 1984	1985	1986	1987	1988	1989	1990	1991	1992	1993	1994	1995	1996	1997	1998	1999	2000	2001	2002	2003	2004
Relative Survival Rates (SEER ^b)																						
1-year	74.8	79.0	81.1	82.6	81.8	81.1	82.1	83.1	83.3	82.9	81.7	82.8	81.7	83.1	81.8	82.6	83.9	84.3	85.6	83.8	83.9	85.2
2-year	63.8	68.3	72.2	73.3	73.1	73.4	73.4	74.4	75.1	74.3	73.5	73.9	73.1	75.3	74.1	75.2	75.8	77.1	78.1	77.3	77.2	
3-year	57.1	61.8	66.4	67.5	67.3	67.5	68.5	69.7	69.5	68.7	68.4	69.0	67.2	70.1	68.6	69.4	71.2	72.9	73.6	72.9		
4-year	53.0	57.4	62.3	63.6	62.8	62.9	64.3	65.2	65.5	64.6	63.7	63.9	63.3	65.7	65.8	66.1	68.1	69.9	70.8			
5-year	50.4	54.5	59.5	60.9	60.4	60.7	61.6	62.4	62.8	61.9	60.6	60.4	60.3	63.0	62.8	63.3	65.7	67.3				
6-year	48.3	52.4	57.6	58.6	59.0	58.9	60.1	60.7	60.0	60.3	59.0	58.6	57.5	61.6	60.9	61.4	64.7					
7-year	47.2	50.8	55.9	57.4	57.2	57.5	58.6	58.6	57.9	58.6	57.3	57.2	56.0	60.5	60.3	60.3						
8-year	46.3	49.7	55.4	56.4	56.4	56.5	57.7	57.1	56.6	56.8	56.4	55.7	55.4	60.2	59.1							
9-year	45.6	49.0	54.3	55.7	55.4	55.3	56.4	56.6	55.6	55.8	55.0	55.1	55.1	60.1								
10-year	44.9	48.2	53.7	55.6	54.6	54.5	55.2	56.1	54.9	55.2	54.1	54.0	54.8									
11-year	44.5	47.7	53.3	55.1	54.2	54.3	54.2	55.7	54.9	54.5	52.8	54.0										
12-year	43.9	47.4	52.9	54.6	53.1	53.3	53.8	55.3	54.9	54.5	52.7											
13-year	43.5	47.2	52.2	54.0	52.4	52.6	53.1	55.0	54.7	53.9												
14-year	43.0	46.7	51.6	53.5	52.3	52.6	52.7	54.6	53.9													
15-year	42.9	46.5	51.0	52.8	52.2	52.1	51.8	54.4														
16-year	42.5	46.3	50.8	52.4	52.0	52.1	51.2															
17-year	42.3	45.6	50.4	52.4	52.0	51.4																
18-year	42.1	45.3	50.4	51.8	52.0																	
19-year	42.0	45.0	49.8	51.2																		
20-year	42.0	44.7	48.2																			

^a Survival rates are relative rates expressed as percents.

^b Rates are from the SEER 9 areas (San Francisco, Connecticut, Detroit, Hawaii, Iowa, New Mexico, Seattle, Utah, and Atlanta).

Table VI-14
COLON AND RECTUM CANCER (Invasive)

SURVIVAL RATES^a

By Year of Diagnosis

All Races, Females

Year of Diagnosis

	1975- 1979	1980- 1984	1985	1986	1987	1988	1989	1990	1991	1992	1993	1994	1995	1996	1997	1998	1999	2000	2001	2002	2003	2004
Relative Survival Rates (SEER ^b)																						
1-year	74.8	77.3	78.8	80.1	80.0	79.4	80.6	80.7	81.8	80.7	80.2	80.6	78.7	80.7	80.1	82.6	81.8	80.9	81.7	84.0	82.4	83.2
2-year	63.8	67.5	69.6	70.8	70.8	70.3	71.6	72.6	72.9	72.5	72.2	72.2	70.9	72.6	72.0	75.5	74.8	73.3	74.9	78.1	76.2	
3-year	58.2	61.5	63.7	65.7	65.6	65.4	67.0	67.2	67.6	67.3	67.3	67.2	65.6	68.4	67.4	71.1	70.5	69.3	70.5	73.2		
4-year	54.7	57.9	60.5	62.2	62.3	63.0	63.4	63.5	64.7	64.3	63.9	64.1	62.0	65.7	64.5	68.5	67.5	65.9	67.8			
5-year	52.5	55.5	58.6	60.1	60.0	60.3	60.8	61.8	62.8	62.5	61.6	61.9	60.8	63.8	61.9	65.6	65.7	64.7				
6-year	51.1	53.8	57.0	58.5	58.1	58.9	59.7	60.8	61.5	61.1	60.0	60.5	58.8	62.7	60.4	64.3	64.2					
7-year	50.1	52.5	56.1	56.8	56.7	57.6	58.2	59.6	60.5	59.4	58.5	59.1	57.1	61.8	59.2	63.2						
8-year	49.4	51.7	55.1	55.4	56.1	56.8	56.8	58.3	59.4	58.2	57.4	58.8	56.8	60.6	59.1							
9-year	48.9	51.1	54.3	55.0	55.5	56.0	56.3	57.3	58.0	57.7	57.1	58.7	56.6	59.8								
10-year	48.4	50.5	53.7	54.3	54.7	55.2	55.6	56.7	57.5	56.8	56.9	57.8	56.4									
11-year	47.9	50.1	53.0	54.1	54.5	53.9	55.0	56.1	56.9	56.2	56.5	57.2										
12-year	47.6	49.8	53.0	54.1	54.5	53.3	55.0	55.8	56.7	56.0	55.3											
13-year	47.4	49.5	52.8	53.7	53.0	52.4	54.8	55.3	56.3	55.5												
14-year	47.1	49.2	52.6	52.9	52.9	51.5	54.8	54.8	56.2													
15-year	46.7	49.0	51.6	52.9	52.1	51.2	54.8	54.3														
16-year	46.4	48.2	51.2	52.6	51.6	51.2	54.8															
17-year	46.3	48.0	50.4	51.5	51.2	51.2																
18-year	45.8	47.7	49.8	51.4	51.2																	
19-year	45.8	47.3	49.8	51.3																		
20-year	45.8	47.2	49.5																			

^a Survival rates are relative rates expressed as percents.

^b Rates are from the SEER 9 areas (San Francisco, Connecticut, Detroit, Hawaii, Iowa, New Mexico, Seattle, Utah, and Atlanta).

Table VI-15
COLON AND RECTUM CANCER (Invasive)

Risk of Being Diagnosed With Cancer in 10, 20 and 30 Years, Lifetime Risk of Being Diagnosed with Cancer, and
Lifetime Risk of Dying from Cancer Given Cancer Free At Current Age
Both Sexes, 2003-2005 By Race/Ethnicity

Race/ Ethnicity	Current Age	Risk of Being Diagnosed with Cancer						Risk of Dying from Cancer	
		+10 yrs Percent (95% C.I.)	+20 yrs Percent (95% C.I.)	+30 yrs Percent (95% C.I.)	Eventually Percent (95% C.I.)	Eventually Percent (95% C.I.)			
All Races	0	0.00 (0.00, 0.00)	0.00 (0.00, 0.00)	0.02 (0.02, 0.02)	5.29 (5.26, 5.32)	2.15 (2.14, 2.16)			
	10	0.00 (0.00, 0.00)	0.02 (0.02, 0.02)	0.08 (0.07, 0.08)	5.36 (5.32, 5.39)	2.18 (2.16, 2.19)			
	20	0.01 (0.01, 0.02)	0.07 (0.07, 0.08)	0.28 (0.28, 0.29)	5.38 (5.34, 5.41)	2.18 (2.17, 2.20)			
	30	0.06 (0.06, 0.06)	0.27 (0.27, 0.28)	0.87 (0.86, 0.88)	5.41 (5.38, 5.45)	2.20 (2.19, 2.21)			
	40	0.21 (0.21, 0.22)	0.82 (0.81, 0.83)	2.01 (1.99, 2.03)	5.42 (5.39, 5.46)	2.22 (2.21, 2.23)			
	50	0.62 (0.61, 0.63)	1.85 (1.83, 1.87)	3.59 (3.56, 3.62)	5.37 (5.33, 5.40)	2.23 (2.21, 2.24)			
	60	1.31 (1.30, 1.33)	3.17 (3.14, 3.20)	4.65 (4.61, 4.68)	5.07 (5.03, 5.11)	2.19 (2.17, 2.20)			
	70	2.16 (2.14, 2.18)	3.88 (3.84, 3.91)	- (- , -)	4.37 (4.33, 4.40)	2.04 (2.03, 2.05)			
80	2.47 (2.44, 2.50)	- (- , -)	- (- , -)	3.17 (3.13, 3.21)	1.75 (1.73, 1.76)				
White	0	0.00 (0.00, 0.00)	0.00 (0.00, 0.00)	0.02 (0.02, 0.02)	5.28 (5.25, 5.32)	2.12 (2.11, 2.13)			
	10	0.00 (0.00, 0.00)	0.02 (0.02, 0.02)	0.08 (0.07, 0.08)	5.34 (5.30, 5.38)	2.15 (2.14, 2.16)			
	20	0.02 (0.01, 0.02)	0.07 (0.07, 0.08)	0.28 (0.27, 0.28)	5.36 (5.32, 5.40)	2.16 (2.14, 2.17)			
	30	0.06 (0.06, 0.06)	0.26 (0.26, 0.27)	0.84 (0.83, 0.85)	5.39 (5.35, 5.43)	2.17 (2.16, 2.18)			
	40	0.21 (0.20, 0.21)	0.79 (0.78, 0.80)	1.97 (1.95, 1.99)	5.40 (5.36, 5.44)	2.18 (2.17, 2.20)			
	50	0.60 (0.59, 0.61)	1.81 (1.79, 1.83)	3.56 (3.53, 3.59)	5.34 (5.30, 5.38)	2.19 (2.18, 2.20)			
	60	1.29 (1.27, 1.31)	3.15 (3.12, 3.18)	4.64 (4.60, 4.68)	5.05 (5.01, 5.09)	2.15 (2.14, 2.17)			
	70	2.16 (2.14, 2.19)	3.88 (3.85, 3.92)	- (- , -)	4.36 (4.32, 4.40)	2.01 (2.00, 2.02)			
80	2.48 (2.45, 2.51)	- (- , -)	- (- , -)	3.16 (3.12, 3.20)	1.72 (1.71, 1.74)				
Black	0	0.00 (0.00, 0.00)	0.00 (0.00, 0.00)	0.01 (0.01, 0.02)	5.10 (4.99, 5.20)	2.41 (2.37, 2.44)			
	10	0.00 (0.00, 0.00)	0.01 (0.01, 0.02)	0.08 (0.07, 0.09)	5.22 (5.11, 5.33)	2.47 (2.43, 2.50)			
	20	0.01 (0.01, 0.02)	0.08 (0.07, 0.09)	0.33 (0.31, 0.35)	5.25 (5.14, 5.36)	2.48 (2.45, 2.52)			
	30	0.07 (0.06, 0.07)	0.32 (0.31, 0.34)	1.11 (1.07, 1.14)	5.33 (5.22, 5.44)	2.52 (2.48, 2.55)			
	40	0.26 (0.25, 0.28)	1.06 (1.03, 1.10)	2.46 (2.40, 2.52)	5.39 (5.28, 5.51)	2.55 (2.52, 2.59)			
	50	0.85 (0.82, 0.88)	2.32 (2.26, 2.39)	4.02 (3.92, 4.11)	5.42 (5.30, 5.54)	2.59 (2.55, 2.63)			
	60	1.67 (1.61, 1.72)	3.58 (3.49, 3.68)	4.82 (4.71, 4.94)	5.16 (5.04, 5.29)	2.57 (2.53, 2.61)			
	70	2.43 (2.34, 2.52)	4.00 (3.88, 4.13)	- (- , -)	4.44 (4.30, 4.57)	2.42 (2.37, 2.46)			
80	2.57 (2.45, 2.69)	- (- , -)	- (- , -)	3.27 (3.12, 3.43)	2.12 (2.06, 2.17)				

Devcan Version 7.0.0, April 2008, National Cancer Institute (<http://srab.cancer.gov/devcan/>).

Source: Incidence data are from the SEER 17 areas (San Francisco, Connecticut, Detroit, Hawaii, Iowa, New Mexico, Seattle, Utah, Atlanta, San Jose-Monterey, Los Angeles, Alaska Native Registry, Rural Georgia, California excluding SF/SJM/LA, Kentucky, Louisiana and New Jersey). Mortality data are from the NCHS public use data file for the total US.

- Statistic could not be calculated.

A percent or confidence interval value of 0.00 represents a value that is below 0.005.

Table VI-15 - continued
 COLON AND RECTUM CANCER (Invasive)

Risk of Being Diagnosed With Cancer in 10, 20 and 30 Years, Lifetime Risk of Being Diagnosed with Cancer, and
 Lifetime Risk of Dying from Cancer Given Cancer Free At Current Age
 Both Sexes, 2003-2005 By Race/Ethnicity

Race/ Ethnicity	Current Age	Risk of Being Diagnosed with Cancer				Risk of Dying from Cancer	
		+10 yrs Percent (95% C.I.)	+20 yrs Percent (95% C.I.)	+30 yrs Percent (95% C.I.)	Eventually Percent (95% C.I.)	Eventually Percent (95% C.I.)	
Asian/ Pacific Islander	0	0.00 (0.00, 0.00)	0.00 (0.00, 0.00)	0.01 (0.01, 0.02)	5.33 (5.17, 5.50)	2.06 (1.96, 2.18)	
	10	0.00 (0.00, 0.00)	0.01 (0.01, 0.02)	0.07 (0.07, 0.08)	5.37 (5.21, 5.55)	2.08 (1.97, 2.20)	
	20	0.01 (0.01, 0.02)	0.07 (0.06, 0.08)	0.27 (0.25, 0.28)	5.39 (5.22, 5.56)	2.09 (1.98, 2.20)	
	30	0.06 (0.05, 0.07)	0.25 (0.24, 0.27)	0.79 (0.76, 0.82)	5.40 (5.24, 5.57)	2.09 (1.98, 2.21)	
	40	0.20 (0.18, 0.21)	0.73 (0.70, 0.76)	1.75 (1.70, 1.81)	5.37 (5.21, 5.55)	2.09 (1.98, 2.21)	
	50	0.54 (0.52, 0.57)	1.58 (1.53, 1.64)	3.13 (3.04, 3.22)	5.26 (5.09, 5.43)	2.07 (1.96, 2.19)	
	60	1.08 (1.03, 1.13)	2.69 (2.60, 2.77)	4.19 (4.07, 4.32)	4.89 (4.73, 5.07)	2.02 (1.90, 2.14)	
	70	1.75 (1.68, 1.83)	3.40 (3.28, 3.52)	- (- , -)	4.17 (3.99, 4.35)	1.88 (1.77, 2.01)	
	80	2.06 (1.95, 2.17)	- (- , -)	- (- , -)	3.02 (2.83, 3.22)	1.66 (1.52, 1.81)	
American Indian/ Alaska Native ^a	0	0.00 (0.00, 0.02)	0.00 (0.00, 0.03)	0.02 (0.01, 0.05)	4.21 (3.77, 4.78)	1.73 (1.55, 1.94)	
	10	0.00 (0.00, 0.01)	0.02 (0.01, 0.05)	0.10 (0.07, 0.15)	4.29 (3.85, 4.86)	1.76 (1.58, 1.98)	
	20	0.02 (0.01, 0.04)	0.10 (0.07, 0.14)	0.30 (0.24, 0.37)	4.32 (3.87, 4.90)	1.78 (1.59, 2.00)	
	30	0.08 (0.05, 0.12)	0.28 (0.23, 0.35)	0.80 (0.69, 0.92)	4.37 (3.92, 4.96)	1.81 (1.62, 2.03)	
	40	0.21 (0.16, 0.26)	0.74 (0.63, 0.86)	1.72 (1.52, 1.95)	4.41 (3.94, 5.01)	1.84 (1.65, 2.08)	
	50	0.56 (0.46, 0.66)	1.58 (1.38, 1.81)	3.18 (2.83, 3.57)	4.38 (3.90, 5.01)	1.87 (1.66, 2.11)	
	60	1.11 (0.93, 1.31)	2.84 (2.49, 3.23)	3.97 (3.50, 4.50)	4.14 (3.64, 4.80)	1.85 (1.63, 2.12)	
	70	2.04 (1.72, 2.41)	3.37 (2.88, 3.93)	- (- , -)	3.57 (3.04, 4.29)	1.77 (1.52, 2.08)	
	80	1.89 (1.44, 2.44)	- (- , -)	- (- , -)	2.17 (1.65, 3.01)	1.47 (1.16, 1.86)	
Hispanic ^b	0	0.00 (0.00, 0.00)	0.00 (0.00, 0.00)	0.01 (0.01, 0.02)	4.86 (4.73, 5.01)	1.88 (1.83, 1.94)	
	10	0.00 (0.00, 0.00)	0.01 (0.01, 0.02)	0.06 (0.06, 0.07)	4.92 (4.78, 5.06)	1.91 (1.85, 1.97)	
	20	0.01 (0.01, 0.01)	0.06 (0.06, 0.07)	0.23 (0.22, 0.24)	4.93 (4.80, 5.08)	1.91 (1.86, 1.97)	
	30	0.05 (0.05, 0.06)	0.22 (0.21, 0.23)	0.74 (0.71, 0.76)	4.96 (4.82, 5.11)	1.93 (1.87, 1.99)	
	40	0.17 (0.16, 0.18)	0.69 (0.67, 0.72)	1.71 (1.66, 1.76)	4.96 (4.82, 5.11)	1.94 (1.88, 2.00)	
	50	0.53 (0.51, 0.55)	1.58 (1.53, 1.62)	3.07 (2.99, 3.15)	4.90 (4.76, 5.05)	1.94 (1.88, 2.00)	
	60	1.10 (1.06, 1.14)	2.67 (2.60, 2.75)	3.98 (3.87, 4.09)	4.61 (4.46, 4.77)	1.89 (1.83, 1.96)	
	70	1.77 (1.70, 1.84)	3.24 (3.12, 3.35)	- (- , -)	3.95 (3.79, 4.11)	1.76 (1.70, 1.83)	
	80	1.95 (1.84, 2.06)	- (- , -)	- (- , -)	2.89 (2.71, 3.09)	1.50 (1.42, 1.59)	

Devcan Version 7.0.0, April 2008, National Cancer Institute (<http://srab.cancer.gov/devcan/>).

Source: Incidence data are from the SEER 17 areas (San Francisco, Connecticut, Detroit, Hawaii, Iowa, New Mexico, Seattle, Utah, Atlanta, San Jose-Monterey, Los Angeles, Alaska Native Registry, Rural Georgia, California excluding SF/SJM/LA, Kentucky, Louisiana and New Jersey). Mortality data are from the NCHS public use data file for the total US.

^a Underlying incidence and mortality data for American Indian/Alaska Native are based on the CHSDA (Contract Health Service Delivery Area) counties.

^b Hispanic is not mutually exclusive from whites, blacks, Asian/Pacific Islanders, and American Indians/Alaska Natives. Underlying incidence data for Hispanics are based on NHIA and exclude cases from the Alaska Native Registry and Kentucky. Underlying mortality data for Hispanics exclude deaths from Minnesota, New Hampshire and North Dakota.

- Statistic could not be calculated.

A percent or confidence interval value of 0.00 represents a value that is below 0.005.

Table VI-15 - continued
 COLON AND RECTUM CANCER (Invasive)

Risk of Being Diagnosed With Cancer in 10, 20 and 30 Years, Lifetime Risk of Being Diagnosed with Cancer, and
 Lifetime Risk of Dying from Cancer Given Cancer Free At Current Age
 Males, 2003-2005 By Race/Ethnicity

Race/ Ethnicity	Current Age	Risk of Being Diagnosed with Cancer						Risk of Dying from Cancer	
		+10 yrs Percent (95% C.I.)	+20 yrs Percent (95% C.I.)	+30 yrs Percent (95% C.I.)	Eventually Percent (95% C.I.)	Eventually Percent (95% C.I.)			
All Races	0	0.00 (0.00, 0.00)	0.00 (0.00, 0.00)	0.02 (0.01, 0.02)	5.51 (5.46, 5.56)	2.23 (2.22, 2.25)			
	10	0.00 (0.00, 0.00)	0.02 (0.01, 0.02)	0.08 (0.07, 0.08)	5.58 (5.53, 5.63)	2.27 (2.25, 2.28)			
	20	0.01 (0.01, 0.02)	0.08 (0.07, 0.08)	0.30 (0.29, 0.31)	5.61 (5.56, 5.66)	2.28 (2.26, 2.30)			
	30	0.06 (0.06, 0.07)	0.29 (0.28, 0.30)	0.96 (0.95, 0.98)	5.67 (5.62, 5.73)	2.31 (2.29, 2.32)			
	40	0.23 (0.22, 0.23)	0.92 (0.90, 0.93)	2.29 (2.26, 2.32)	5.71 (5.65, 5.76)	2.33 (2.32, 2.35)			
	50	0.71 (0.70, 0.73)	2.14 (2.11, 2.17)	4.06 (4.02, 4.11)	5.69 (5.63, 5.74)	2.36 (2.34, 2.37)			
	60	1.55 (1.52, 1.57)	3.64 (3.60, 3.68)	5.06 (5.01, 5.11)	5.40 (5.35, 5.46)	2.33 (2.31, 2.35)			
	70	2.51 (2.48, 2.55)	4.22 (4.17, 4.27)	- (- , -)	4.63 (4.57, 4.69)	2.16 (2.14, 2.18)			
80	2.65 (2.60, 2.70)	- (- , -)	- (- , -)	3.29 (3.23, 3.36)	1.84 (1.82, 1.86)				
White	0	0.00 (0.00, 0.00)	0.00 (0.00, 0.00)	0.02 (0.01, 0.02)	5.53 (5.48, 5.59)	2.22 (2.20, 2.24)			
	10	0.00 (0.00, 0.00)	0.02 (0.01, 0.02)	0.08 (0.07, 0.08)	5.60 (5.54, 5.65)	2.25 (2.23, 2.27)			
	20	0.02 (0.01, 0.02)	0.08 (0.07, 0.08)	0.29 (0.29, 0.30)	5.62 (5.57, 5.68)	2.26 (2.24, 2.28)			
	30	0.06 (0.06, 0.07)	0.28 (0.27, 0.29)	0.94 (0.93, 0.96)	5.68 (5.62, 5.74)	2.29 (2.27, 2.30)			
	40	0.22 (0.22, 0.23)	0.89 (0.88, 0.91)	2.26 (2.23, 2.29)	5.71 (5.65, 5.77)	2.31 (2.29, 2.33)			
	50	0.70 (0.68, 0.71)	2.11 (2.08, 2.14)	4.06 (4.01, 4.10)	5.69 (5.63, 5.75)	2.33 (2.31, 2.35)			
	60	1.53 (1.51, 1.56)	3.64 (3.59, 3.68)	5.07 (5.01, 5.13)	5.40 (5.34, 5.46)	2.30 (2.28, 2.32)			
	70	2.52 (2.48, 2.56)	4.23 (4.17, 4.29)	- (- , -)	4.62 (4.56, 4.69)	2.14 (2.12, 2.16)			
80	2.67 (2.61, 2.72)	- (- , -)	- (- , -)	3.28 (3.21, 3.35)	1.82 (1.79, 1.84)				
Black	0	0.00 (0.00, 0.00)	0.00 (0.00, 0.01)	0.01 (0.01, 0.02)	5.01 (4.86, 5.17)	2.40 (2.35, 2.45)			
	10	0.00 (0.00, 0.00)	0.01 (0.01, 0.02)	0.08 (0.07, 0.09)	5.14 (4.99, 5.31)	2.47 (2.41, 2.52)			
	20	0.01 (0.01, 0.02)	0.08 (0.07, 0.09)	0.34 (0.31, 0.36)	5.19 (5.03, 5.35)	2.49 (2.43, 2.54)			
	30	0.07 (0.06, 0.08)	0.33 (0.31, 0.36)	1.17 (1.11, 1.22)	5.31 (5.15, 5.48)	2.54 (2.48, 2.59)			
	40	0.28 (0.26, 0.30)	1.13 (1.08, 1.19)	2.63 (2.54, 2.73)	5.42 (5.25, 5.59)	2.59 (2.54, 2.65)			
	50	0.92 (0.87, 0.97)	2.52 (2.42, 2.62)	4.28 (4.14, 4.42)	5.50 (5.33, 5.68)	2.66 (2.60, 2.72)			
	60	1.87 (1.78, 1.97)	3.93 (3.78, 4.08)	5.09 (4.91, 5.28)	5.36 (5.17, 5.56)	2.67 (2.61, 2.74)			
	70	2.78 (2.64, 2.92)	4.36 (4.16, 4.56)	- (- , -)	4.72 (4.50, 4.95)	2.53 (2.46, 2.61)			
80	2.92 (2.71, 3.14)	- (- , -)	- (- , -)	3.59 (3.32, 3.88)	2.20 (2.10, 2.30)				

Devcan Version 7.0.0, April 2008, National Cancer Institute (<http://srab.cancer.gov/devcan/>).

Source: Incidence data are from the SEER 17 areas (San Francisco, Connecticut, Detroit, Hawaii, Iowa, New Mexico, Seattle, Utah, Atlanta, San Jose-Monterey, Los Angeles, Alaska Native Registry, Rural Georgia, California excluding SF/SJM/LA, Kentucky, Louisiana and New Jersey). Mortality data are from the NCHS public use data file for the total US.

- Statistic could not be calculated.

A percent or confidence interval value of 0.00 represents a value that is below 0.005.

Table VI-15 - continued
 COLON AND RECTUM CANCER (Invasive)

Risk of Being Diagnosed With Cancer in 10, 20 and 30 Years, Lifetime Risk of Being Diagnosed with Cancer, and
 Lifetime Risk of Dying from Cancer Given Cancer Free At Current Age
 Males, 2003-2005 By Race/Ethnicity

Race/ Ethnicity	Current Age	Risk of Being Diagnosed with Cancer				Risk of Dying from Cancer	
		+10 yrs Percent (95% C.I.)	+20 yrs Percent (95% C.I.)	+30 yrs Percent (95% C.I.)	Eventually Percent (95% C.I.)	Eventually Percent (95% C.I.)	
Asian/ Pacific Islander	0	0.00 (0.00, 0.00)	0.00 (0.00, 0.01)	0.01 (0.01, 0.02)	5.64 (5.41, 5.89)	2.15 (2.00, 2.32)	
	10	0.00 (0.00, 0.00)	0.01 (0.01, 0.02)	0.07 (0.06, 0.09)	5.69 (5.46, 5.94)	2.17 (2.02, 2.34)	
	20	0.01 (0.01, 0.02)	0.07 (0.06, 0.09)	0.28 (0.25, 0.30)	5.71 (5.48, 5.96)	2.18 (2.03, 2.34)	
	30	0.06 (0.05, 0.07)	0.27 (0.24, 0.29)	0.86 (0.82, 0.91)	5.73 (5.50, 5.99)	2.18 (2.03, 2.35)	
	40	0.21 (0.19, 0.23)	0.81 (0.76, 0.86)	2.00 (1.91, 2.09)	5.72 (5.48, 5.97)	2.19 (2.03, 2.36)	
	50	0.61 (0.57, 0.65)	1.83 (1.74, 1.92)	3.62 (3.48, 3.77)	5.62 (5.38, 5.88)	2.18 (2.02, 2.35)	
	60	1.27 (1.20, 1.35)	3.15 (3.01, 3.30)	4.60 (4.40, 4.79)	5.25 (5.00, 5.51)	2.13 (1.97, 2.31)	
	70	2.10 (1.98, 2.23)	3.72 (3.53, 3.91)	- (- , -)	4.44 (4.19, 4.72)	1.97 (1.80, 2.16)	
	80	2.14 (1.97, 2.32)	- (- , -)	- (- , -)	3.10 (2.82, 3.42)	1.70 (1.49, 1.93)	
American Indian/ Alaska Native ^a	0	0.00 (0.00, 0.05)	0.00 (0.00, 0.05)	0.01 (0.00, 0.05)	3.91 (3.33, 4.82)	1.98 (1.69, 2.35)	
	10	0.00 (0.00, 0.02)	0.01 (0.00, 0.04)	0.09 (0.05, 0.15)	3.99 (3.40, 4.92)	2.02 (1.73, 2.41)	
	20	0.01 (0.00, 0.03)	0.09 (0.05, 0.15)	0.26 (0.19, 0.36)	4.03 (3.44, 4.97)	2.04 (1.75, 2.43)	
	30	0.08 (0.04, 0.14)	0.26 (0.18, 0.35)	0.84 (0.68, 1.03)	4.12 (3.51, 5.08)	2.09 (1.79, 2.49)	
	40	0.19 (0.13, 0.26)	0.79 (0.63, 0.97)	1.89 (1.58, 2.24)	4.18 (3.55, 5.18)	2.16 (1.84, 2.57)	
	50	0.64 (0.49, 0.81)	1.80 (1.49, 2.16)	3.26 (2.76, 3.83)	4.22 (3.57, 5.27)	2.22 (1.89, 2.66)	
	60	1.28 (1.01, 1.61)	2.89 (2.38, 3.48)	3.92 (3.24, 4.73)	3.96 (3.26, 5.09)	2.25 (1.88, 2.74)	
	70	1.94 (1.48, 2.49)	3.17 (2.47, 4.05)	- (- , -)	3.22 (2.50, 4.51)	2.18 (1.76, 2.77)	
	80	1.86 (1.18, 2.83)	- (- , -)	- (- , -)	1.93 (1.22, 3.64)	1.96 (1.40, 2.81)	
Hispanic ^b	0	0.00 (0.00, 0.00)	0.00 (0.00, 0.00)	0.01 (0.01, 0.02)	5.22 (5.02, 5.45)	2.08 (1.99, 2.18)	
	10	0.00 (0.00, 0.00)	0.01 (0.01, 0.02)	0.06 (0.06, 0.07)	5.29 (5.08, 5.51)	2.11 (2.01, 2.21)	
	20	0.01 (0.01, 0.01)	0.06 (0.05, 0.07)	0.24 (0.23, 0.26)	5.31 (5.10, 5.55)	2.12 (2.03, 2.22)	
	30	0.05 (0.04, 0.06)	0.23 (0.22, 0.25)	0.83 (0.79, 0.86)	5.37 (5.15, 5.60)	2.14 (2.05, 2.24)	
	40	0.18 (0.17, 0.20)	0.79 (0.75, 0.83)	2.02 (1.94, 2.09)	5.39 (5.18, 5.63)	2.16 (2.07, 2.26)	
	50	0.62 (0.59, 0.66)	1.89 (1.81, 1.97)	3.63 (3.51, 3.76)	5.37 (5.15, 5.61)	2.18 (2.08, 2.28)	
	60	1.36 (1.29, 1.43)	3.22 (3.10, 3.35)	4.53 (4.36, 4.72)	5.08 (4.85, 5.34)	2.14 (2.04, 2.26)	
	70	2.16 (2.05, 2.28)	3.68 (3.50, 3.87)	- (- , -)	4.32 (4.07, 4.60)	2.01 (1.89, 2.13)	
	80	2.16 (1.98, 2.34)	- (- , -)	- (- , -)	3.06 (2.75, 3.41)	1.74 (1.59, 1.90)	

Devcan Version 7.0.0, April 2008, National Cancer Institute (<http://srab.cancer.gov/devcan/>).

Source: Incidence data are from the SEER 17 areas (San Francisco, Connecticut, Detroit, Hawaii, Iowa, New Mexico, Seattle, Utah, Atlanta, San Jose-Monterey, Los Angeles, Alaska Native Registry, Rural Georgia, California excluding SF/SJM/LA, Kentucky, Louisiana and New Jersey). Mortality data are from the NCHS public use data file for the total US.

^a Underlying incidence and mortality data for American Indian/Alaska Native are based on the CHSDA (Contract Health Service Delivery Area) counties.

^b Hispanic is not mutually exclusive from whites, blacks, Asian/Pacific Islanders, and American Indians/Alaska Natives. Underlying incidence data for Hispanics are based on NHIA and exclude cases from the Alaska Native Registry and Kentucky. Underlying mortality data for Hispanics exclude deaths from Minnesota, New Hampshire and North Dakota.

- Statistic could not be calculated.

A percent or confidence interval value of 0.00 represents a value that is below 0.005.

Table VI-15 - continued
 COLON AND RECTUM CANCER (Invasive)

Risk of Being Diagnosed With Cancer in 10, 20 and 30 Years, Lifetime Risk of Being Diagnosed with Cancer, and
 Lifetime Risk of Dying from Cancer Given Cancer Free At Current Age
 Females, 2003-2005 By Race/Ethnicity

Race/ Ethnicity	Current Age	Risk of Being Diagnosed with Cancer						Risk of Dying from Cancer	
		+10 yrs Percent (95% C.I.)	+20 yrs Percent (95% C.I.)	+30 yrs Percent (95% C.I.)	Eventually Percent (95% C.I.)	Eventually Percent (95% C.I.)			
All Races	0	0.00 (0.00, 0.00)	0.00 (0.00, 0.00)	0.02 (0.01, 0.02)	5.10 (5.05, 5.15)	2.07 (2.06, 2.09)			
	10	0.00 (0.00, 0.00)	0.02 (0.02, 0.02)	0.08 (0.07, 0.08)	5.16 (5.11, 5.20)	2.10 (2.09, 2.12)			
	20	0.01 (0.01, 0.02)	0.07 (0.07, 0.08)	0.27 (0.26, 0.28)	5.17 (5.12, 5.22)	2.11 (2.09, 2.12)			
	30	0.06 (0.06, 0.06)	0.26 (0.25, 0.26)	0.78 (0.76, 0.79)	5.18 (5.13, 5.23)	2.11 (2.10, 2.13)			
	40	0.20 (0.19, 0.20)	0.72 (0.71, 0.74)	1.74 (1.72, 1.77)	5.17 (5.12, 5.22)	2.12 (2.10, 2.13)			
	50	0.54 (0.52, 0.55)	1.58 (1.55, 1.60)	3.16 (3.12, 3.19)	5.08 (5.03, 5.13)	2.12 (2.10, 2.13)			
	60	1.10 (1.08, 1.12)	2.76 (2.73, 2.79)	4.29 (4.25, 4.34)	4.78 (4.73, 4.83)	2.07 (2.05, 2.08)			
	70	1.88 (1.85, 1.91)	3.61 (3.57, 3.65)	- (- , -)	4.16 (4.11, 4.21)	1.95 (1.93, 1.96)			
80	2.34 (2.30, 2.38)	- (- , -)	- (- , -)	3.09 (3.04, 3.14)	1.70 (1.68, 1.71)				
White	0	0.00 (0.00, 0.00)	0.00 (0.00, 0.00)	0.02 (0.02, 0.02)	5.06 (5.01, 5.11)	2.04 (2.03, 2.06)			
	10	0.00 (0.00, 0.00)	0.02 (0.02, 0.02)	0.07 (0.07, 0.08)	5.11 (5.06, 5.16)	2.06 (2.05, 2.08)			
	20	0.02 (0.01, 0.02)	0.07 (0.07, 0.08)	0.26 (0.25, 0.27)	5.12 (5.07, 5.17)	2.07 (2.05, 2.08)			
	30	0.06 (0.05, 0.06)	0.25 (0.24, 0.25)	0.74 (0.72, 0.75)	5.13 (5.08, 5.18)	2.07 (2.06, 2.09)			
	40	0.19 (0.19, 0.20)	0.69 (0.67, 0.70)	1.68 (1.65, 1.71)	5.11 (5.06, 5.17)	2.08 (2.06, 2.09)			
	50	0.51 (0.49, 0.52)	1.52 (1.49, 1.54)	3.10 (3.06, 3.14)	5.03 (4.97, 5.08)	2.07 (2.06, 2.09)			
	60	1.06 (1.04, 1.09)	2.72 (2.69, 2.76)	4.26 (4.22, 4.31)	4.74 (4.69, 4.79)	2.03 (2.01, 2.05)			
	70	1.87 (1.84, 1.90)	3.61 (3.56, 3.65)	- (- , -)	4.14 (4.09, 4.20)	1.91 (1.90, 1.93)			
80	2.35 (2.31, 2.39)	- (- , -)	- (- , -)	3.08 (3.03, 3.14)	1.67 (1.65, 1.69)				
Black	0	0.00 (0.00, 0.00)	0.00 (0.00, 0.00)	0.01 (0.01, 0.02)	5.19 (5.04, 5.34)	2.42 (2.38, 2.47)			
	10	0.00 (0.00, 0.00)	0.01 (0.01, 0.02)	0.08 (0.07, 0.09)	5.30 (5.15, 5.46)	2.48 (2.43, 2.53)			
	20	0.01 (0.01, 0.02)	0.08 (0.07, 0.09)	0.32 (0.30, 0.34)	5.32 (5.17, 5.47)	2.49 (2.44, 2.54)			
	30	0.07 (0.06, 0.08)	0.31 (0.29, 0.33)	1.05 (1.01, 1.10)	5.35 (5.20, 5.51)	2.50 (2.45, 2.55)			
	40	0.25 (0.23, 0.27)	1.00 (0.96, 1.05)	2.31 (2.22, 2.39)	5.37 (5.22, 5.53)	2.52 (2.47, 2.57)			
	50	0.79 (0.75, 0.83)	2.15 (2.07, 2.23)	3.79 (3.67, 3.92)	5.35 (5.19, 5.52)	2.54 (2.48, 2.59)			
	60	1.50 (1.42, 1.57)	3.30 (3.18, 3.43)	4.61 (4.45, 4.76)	5.01 (4.85, 5.19)	2.49 (2.43, 2.54)			
	70	2.18 (2.07, 2.29)	3.75 (3.60, 3.91)	- (- , -)	4.24 (4.07, 4.42)	2.34 (2.29, 2.40)			
80	2.36 (2.22, 2.51)	- (- , -)	- (- , -)	3.10 (2.91, 3.29)	2.08 (2.01, 2.15)				

Devcan Version 7.0.0, April 2008, National Cancer Institute (<http://srab.cancer.gov/devcan/>).

Source: Incidence data are from the SEER 17 areas (San Francisco, Connecticut, Detroit, Hawaii, Iowa, New Mexico, Seattle, Utah, Atlanta, San Jose-Monterey, Los Angeles, Alaska Native Registry, Rural Georgia, California excluding SF/SJM/LA, Kentucky, Louisiana and New Jersey). Mortality data are from the NCHS public use data file for the total US.

- Statistic could not be calculated.

A percent or confidence interval value of 0.00 represents a value that is below 0.005.

Table VI-15 - continued
 COLON AND RECTUM CANCER (Invasive)

Risk of Being Diagnosed With Cancer in 10, 20 and 30 Years, Lifetime Risk of Being Diagnosed with Cancer, and
 Lifetime Risk of Dying from Cancer Given Cancer Free At Current Age
 Females, 2003-2005 By Race/Ethnicity

Race/ Ethnicity	Current Age	Risk of Being Diagnosed with Cancer				Risk of Dying from Cancer	
		+10 yrs Percent (95% C.I.)	+20 yrs Percent (95% C.I.)	+30 yrs Percent (95% C.I.)	Eventually Percent (95% C.I.)	Eventually Percent (95% C.I.)	
Asian/ Pacific Islander	0	0.00 (0.00, 0.00)	0.00 (0.00, 0.01)	0.01 (0.01, 0.02)	5.06 (4.84, 5.30)	1.99 (1.84, 2.16)	
	10	0.00 (0.00, 0.00)	0.01 (0.01, 0.02)	0.07 (0.06, 0.09)	5.10 (4.88, 5.34)	2.01 (1.86, 2.18)	
	20	0.01 (0.01, 0.02)	0.07 (0.06, 0.08)	0.26 (0.23, 0.28)	5.11 (4.88, 5.35)	2.01 (1.86, 2.18)	
	30	0.06 (0.05, 0.07)	0.24 (0.22, 0.27)	0.72 (0.68, 0.76)	5.11 (4.89, 5.35)	2.01 (1.86, 2.18)	
	40	0.18 (0.17, 0.20)	0.66 (0.62, 0.70)	1.54 (1.47, 1.61)	5.07 (4.85, 5.32)	2.01 (1.85, 2.18)	
	50	0.48 (0.45, 0.51)	1.37 (1.30, 1.44)	2.72 (2.61, 2.84)	4.94 (4.72, 5.19)	1.98 (1.83, 2.16)	
	60	0.92 (0.86, 0.98)	2.31 (2.20, 2.42)	3.86 (3.70, 4.03)	4.60 (4.37, 4.85)	1.92 (1.77, 2.10)	
	70	1.49 (1.41, 1.58)	3.16 (3.00, 3.32)	- (- , -)	3.94 (3.71, 4.20)	1.82 (1.65, 2.00)	
	80	2.00 (1.85, 2.15)	- (- , -)	- (- , -)	2.94 (2.69, 3.22)	1.63 (1.44, 1.84)	
American Indian/ Alaska Native ^a	0	0.00 (0.00, 0.05)	0.01 (0.00, 0.05)	0.04 (0.02, 0.10)	4.49 (3.85, 5.37)	1.53 (1.29, 1.83)	
	10	0.01 (0.00, 0.03)	0.04 (0.02, 0.08)	0.12 (0.07, 0.19)	4.56 (3.92, 5.46)	1.55 (1.31, 1.86)	
	20	0.03 (0.01, 0.08)	0.12 (0.07, 0.19)	0.34 (0.25, 0.45)	4.58 (3.93, 5.48)	1.56 (1.32, 1.87)	
	30	0.08 (0.05, 0.14)	0.31 (0.23, 0.41)	0.76 (0.62, 0.94)	4.59 (3.94, 5.50)	1.58 (1.33, 1.89)	
	40	0.23 (0.16, 0.31)	0.69 (0.55, 0.86)	1.56 (1.30, 1.87)	4.59 (3.93, 5.52)	1.60 (1.35, 1.92)	
	50	0.48 (0.36, 0.63)	1.38 (1.12, 1.68)	3.11 (2.64, 3.65)	4.50 (3.83, 5.46)	1.59 (1.34, 1.93)	
	60	0.95 (0.73, 1.21)	2.79 (2.31, 3.34)	4.01 (3.37, 4.76)	4.27 (3.57, 5.26)	1.56 (1.29, 1.91)	
	70	2.12 (1.68, 2.64)	3.53 (2.87, 4.32)	- (- , -)	3.83 (3.10, 4.91)	1.49 (1.20, 1.89)	
	80	1.91 (1.34, 2.65)	- (- , -)	- (- , -)	2.31 (1.62, 3.54)	1.18 (0.85, 1.68)	
Hispanic ^b	0	0.00 (0.00, 0.00)	0.00 (0.00, 0.00)	0.01 (0.01, 0.02)	4.57 (4.38, 4.76)	1.74 (1.66, 1.82)	
	10	0.00 (0.00, 0.00)	0.01 (0.01, 0.02)	0.07 (0.06, 0.07)	4.61 (4.43, 4.81)	1.76 (1.68, 1.84)	
	20	0.01 (0.01, 0.01)	0.06 (0.06, 0.07)	0.23 (0.21, 0.24)	4.62 (4.43, 4.82)	1.76 (1.69, 1.84)	
	30	0.05 (0.05, 0.06)	0.22 (0.20, 0.23)	0.65 (0.62, 0.68)	4.62 (4.44, 4.82)	1.76 (1.69, 1.84)	
	40	0.16 (0.15, 0.18)	0.60 (0.57, 0.63)	1.44 (1.37, 1.50)	4.60 (4.41, 4.80)	1.76 (1.69, 1.84)	
	50	0.44 (0.42, 0.47)	1.29 (1.23, 1.35)	2.57 (2.48, 2.68)	4.51 (4.32, 4.71)	1.76 (1.68, 1.84)	
	60	0.88 (0.83, 0.93)	2.21 (2.12, 2.31)	3.52 (3.37, 3.66)	4.22 (4.03, 4.43)	1.70 (1.63, 1.79)	
	70	1.46 (1.38, 1.55)	2.89 (2.75, 3.03)	- (- , -)	3.66 (3.46, 3.88)	1.60 (1.51, 1.69)	
	80	1.81 (1.67, 1.94)	- (- , -)	- (- , -)	2.79 (2.56, 3.03)	1.37 (1.27, 1.47)	

Devcan Version 7.0.0, April 2008, National Cancer Institute (<http://srab.cancer.gov/devcan/>).

Source: Incidence data are from the SEER 17 areas (San Francisco, Connecticut, Detroit, Hawaii, Iowa, New Mexico, Seattle, Utah, Atlanta, San Jose-Monterey, Los Angeles, Alaska Native Registry, Rural Georgia, California excluding SF/SJM/LA, Kentucky, Louisiana and New Jersey). Mortality data are from the NCHS public use data file for the total US.

^a Underlying incidence and mortality data for American Indian/Alaska Native are based on the CHSDA (Contract Health Service Delivery Area) counties.

^b Hispanic is not mutually exclusive from whites, blacks, Asian/Pacific Islanders, and American Indians/Alaska Natives. Underlying incidence data for Hispanics are based on NHIA and exclude cases from the Alaska Native Registry and Kentucky. Underlying mortality data for Hispanics exclude deaths from Minnesota, New Hampshire and North Dakota.

- Statistic could not be calculated.

A percent or confidence interval value of 0.00 represents a value that is below 0.005.

Table VI-16
COLON AND RECTUM CANCER (Invasive)

SEER INCIDENCE AND U.S. MORTALITY
AGE-ADJUSTED RATES AND TRENDS^a
By Race/Ethnicity and Sex

SEER Incidence	Rate 2001-2005 ^b			Seer 13 Areas ^c Trend 1996-2005 AAPC (%)			SEER 9 Areas ^d Trend 1996-2005 AAPC (%)		
	Rate per 100,000 persons			Total	Males	Females	Total	Males	Females
	Total	Males	Females	Total	Males	Females	Total	Males	Females
RACE/ETHNICITY									
All Races	50.6	59.2	43.8	-1.8*	-2.1*	-1.6*	-1.7*	-2.0*	-1.4*
White	50.1	58.9	43.2	-1.9*	-2.1*	-1.6*	-1.8*	-2.1*	-1.6*
White Hispanic ^e	39.8	48.2	33.1	-1.0*	-1.4*	-0.6*	-	-	-
White Non-Hispanic ^e	50.8	59.5	43.8	-1.9*	-2.1*	-1.6*	-	-	-
Black	61.2	71.2	54.5	-0.6*	-0.7*	-1.0*	-1.4	-0.8*	-0.4*
Asian/Pacific Islander	40.9	48.0	35.4	-2.0*	-2.6*	-0.7*	-	-	-
Amer Ind/Alaska Nat ^f	43.5	46.0	41.2	0.2	-0.3	0.8	-	-	-
Hispanic ^e	39.2	47.3	32.8	-0.7	-1.3*	-0.4	-	-	-
U.S. Mortality ^g									
	Rate 2001-2005			Trend 1996-2005 ^h					
	Rate per 100,000 persons			AAPC (%)					
	Total	Males	Females	Total	Males	Females	Total	Males	Females
RACE/ETHNICITY									
All Races	18.8	22.7	15.9	-2.7*	-2.8*	-2.6*			
White	18.3	22.1	15.3	-2.7*	-2.9*	-2.8*			
White Hispanic ^e	13.7	17.1	11.2	-1.6*	-1.9*	-1.5*			
White Non-Hispanic ^e	18.6	22.5	15.6	-2.6*	-2.7*	-2.6*			
Black	26.1	31.8	22.4	-1.8*	-1.7*	-2.0*			
Asian/Pacific Islander	12.0	14.4	10.2	-2.2*	-2.2*	-2.0*			
Amer Ind/Alaska Nat									
Total U.S.	12.8	15.6	10.6	-3.0*	-2.6*	-1.8*			
CHSDA Counties	16.9	20.5	14.2	-1.7	2.1	-0.8			
Non-CHSDA Counties	7.5	9.4	5.9	-2.6*	-5.5*	-3.1*			
Hispanic ^e	13.3	16.5	10.8	-1.5*	-1.9*	-1.4*			

The AAPC is the Average Annual Percent Change over the time interval. The AAPCs are calculated by the Joinpoint Regression Program Version 3.3, April 2008, National Cancer Institute.

Statistic not shown. Rate based on less than 16 cases for the time interval. Trend based on less than 10 cases for at least one year within the time interval.

Rates are age-adjusted to the 2000 US Std Population (19 age groups - Census P25-1130). Trends are based on rates age-adjusted to the 2000 US Std Population (19 age groups - Census P25-1130).

Incidence data used in calculating the 2001-2005 rates are from the SEER 17 areas (San Francisco, Connecticut, Detroit, Hawaii, Iowa, New Mexico, Seattle, Utah, Atlanta, San Jose-Monterey, Los Angeles, Alaska Native Registry, Rural Georgia, California excluding SF/SJM/LA, Kentucky, Louisiana and New Jersey).

The SEER 13 areas are San Francisco, Connecticut, Detroit, Hawaii, Iowa, New Mexico, Seattle, Utah, Atlanta, San Jose-Monterey, Los Angeles, Alaska Native Registry and Rural Georgia. The 1996-2005 AAPC trends are based on a Joinpoint analysis using diagnosis years 1992-2005.

The SEER 9 areas are San Francisco, Connecticut, Detroit, Hawaii, Iowa, New Mexico, Seattle, Utah, and Atlanta. The 1996-2005 AAPC trends are based on a Joinpoint analysis using diagnosis years 1975-2005.

Hispanic and Non-Hispanic are not mutually exclusive from whites, blacks, Asian/Pacific Islanders, and American Indians/Alaska Natives. Incidence data for Hispanics and Non-Hispanics are based on NHIA and exclude cases from the Alaska Native Registry and Kentucky. The 2001-2005 Hispanic and Non-Hispanic death rates exclude deaths from Minnesota, New Hampshire and North Dakota. The 1996-2005 Hispanic and Non-Hispanic mortality trends exclude deaths from Connecticut, Maine, Maryland, Minnesota, New Hampshire, New York, North Dakota, Oklahoma and Vermont.

Incidence data for American Indian/Alaska Native are based on the CHSDA(Contract Health Service Delivery Area) counties.

US Mortality Files, National Center for Health Statistics, CDC.

The 1996-2005 mortality AAPCs are based on a Joinpoint analysis using years of death 1992-2005.

The APC is significantly different from zero (p<.05).

Table VI-17
COLON CANCER (Invasive) and RECTUM CANCER (Invasive)

SEER INCIDENCE
AGE-ADJUSTED RATES AND TRENDS^a
 By Race/Ethnicity and Sex

<u>Colon Incidence</u>	Rate 2001-2005 ^b			Seer 13 Areas ^c			SEER 9 Areas ^d		
	Rate per 100,000 persons			Trend 1996-2005			Trend 1996-2005		
	Total	Males	Females	Total	Males	Females	Total	Males	Females
RACE/ETHNICITY									
All Races	36.6	41.4	32.9	-1.9*	-2.1*	-1.6*	-1.9*	-2.4*	-1.7*
White	36.2	41.1	32.4	-2.0*	-2.2*	-1.8*	-1.8*	-2.2*	-1.7*
White Hispanic ^e	27.6	32.0	24.2	-0.9	-0.5	-0.4	-	-	-
White Non-Hispanic ^e	36.8	41.7	33.0	-1.9*	-2.2*	-1.7*	-	-	-
Black	47.0	53.7	42.7	-0.6*	-0.7	-1.1*	-0.8*	-0.9*	-0.2
Asian/Pacific Islander	27.7	31.1	25.2	-2.0*	-2.8*	-0.7	-	-	-
Amer Ind/Alaska Nat ^f	31.3	30.4	31.9	-0.1	-1.0	0.9	-	-	-
Hispanic ^e	27.2	31.4	23.9	-0.8	-1.2	-0.2	-	-	-
<u>Rectum Incidence</u>									
	Rate 2001-2005 ^b			Seer 13 Areas ^c			SEER 9 Areas ^d		
	Rate per 100,000 persons			Trend 1996-2005			Trend 1996-2005		
	Total	Males	Females	Total	Males	Females	Total	Males	Females
RACE/ETHNICITY									
All Races	14.0	17.9	10.9	-1.6*	-2.0*	-1.6	-2.5*	-3.0*	-2.2*
White	13.9	17.8	10.8	-1.8*	-2.2*	-1.9	-2.5*	-2.8*	-2.2*
White Hispanic ^e	12.2	16.2	9.0	-1.0*	-1.2*	-1.0*	-	-	-
White Non-Hispanic ^e	14.0	17.8	10.8	-1.8*	-2.2*	-1.9	-	-	-
Black	14.2	17.5	11.8	-0.4	-0.6	0.0	-6.1*	-7.7*	-1.7*
Asian/Pacific Islander	13.2	16.9	10.2	-1.2*	-2.2*	-0.6	-	-	-
Amer Ind/Alaska Nat ^f	12.2	15.7	9.3	0.5	-	-	-	-	-
Hispanic ^e	12.0	15.9	8.9	-0.8*	-1.1*	-0.7	-	-	-

The AAPC is the Average Annual Percent Change over the time interval. The AAPCs are calculated by the Joinpoint Regression Program Version 3.3, April 2008, National Cancer Institute.

- Statistic not shown. Rate based on less than 16 cases for the time interval. Trend based on less than 10 cases for at least one year within the time interval.

a Rates are age-adjusted to the 2000 US Std Population (19 age groups - Census P25-1130). Trends are based on rates age-adjusted to the 2000 US Std Population (19 age groups - Census P25-1130).

b Incidence data used in calculating the 2001-2005 rates are from the SEER 17 areas (San Francisco, Connecticut, Detroit, Hawaii, Iowa, New Mexico, Seattle, Utah, Atlanta, San Jose-Monterey, Los Angeles, Alaska Native Registry, Rural Georgia, California excluding SF/SJM/LA, Kentucky, Louisiana and New Jersey).

c The SEER 13 areas are San Francisco, Connecticut, Detroit, Hawaii, Iowa, New Mexico, Seattle, Utah, Atlanta, San Jose-Monterey, Los Angeles, Alaska Native Registry and Rural Georgia. The 1996-2005 AAPC trends are based on a Joinpoint analysis using diagnosis years 1992-2005.

d The SEER 9 areas are San Francisco, Connecticut, Detroit, Hawaii, Iowa, New Mexico, Seattle, Utah, and Atlanta. The 1996-2005 AAPC trends are based on a Joinpoint analysis using diagnosis years 1975-2005.

e Hispanic and Non-Hispanic are not mutually exclusive from whites, blacks, Asian/Pacific Islanders, and American Indians/Alaska Natives. Incidence data for Hispanics and Non-Hispanics are based on NHIA and exclude cases from the Alaska Native Registry and Kentucky.

f Incidence data for American Indian/Alaska Native are based on the CHSDA (Contract Health Service Delivery Area) counties.

* The APC is significantly different from zero (p<.05).

Table VI-18
COLON AND RECTUM CANCER (Invasive)

AGE-ADJUSTED SEER INCIDENCE RATES^a
By Registry, Race and Sex

	All Races			Whites			Blacks		
	Total	Males	Females	Total	Males	Females	Total	Males	Females
<u>SEER INCIDENCE RATES^a, 2001-2005</u>									
REGISTRY									
Atlanta & Rural Georgia	46.7	54.7	41.3	42.7	50.7	36.6	58.7	69.6	52.8
Atlanta	46.4	53.7	41.5	42.5	49.9	37.0	58.4	68.8	53.0
Rural Georgia	53.2	71.8	39.8	45.2	63.4	31.6	67.6	88.8	53.2
California	46.0	53.8	39.8	45.8	53.7	39.4	56.7	64.4	51.0
Greater Bay Area	45.3	52.5	39.7	45.2	52.2	39.5	52.4	61.4	46.1
San Francisco-Oakland	46.5	54.0	40.5	46.0	53.6	39.8	52.7	61.0	46.9
San Jose-Monterey	43.0	49.4	38.0	43.6	49.7	38.9	48.3	65.9	36.5
Los Angeles	47.0	54.7	41.0	45.4	53.1	39.4	60.4	69.2	54.3
Greater California	45.8	53.8	39.3	46.2	54.5	39.5	54.6	59.8	49.9
Connecticut	55.3	65.2	47.9	55.2	65.4	47.4	56.2	61.1	52.5
Detroit	54.8	64.1	48.1	51.8	60.8	45.1	67.8	80.5	59.6
Hawaii	51.7	62.4	42.5	51.4	60.2	43.2	39.8	54.2	-
Iowa	57.9	67.2	50.5	57.7	67.0	50.3	65.6	84.6	52.8
Kentucky	59.3	70.3	51.4	58.7	69.8	50.6	71.6	81.2	65.5
Louisiana	57.6	70.1	48.4	55.3	68.2	45.4	65.5	77.4	57.4
New Jersey	57.8	68.3	49.9	57.6	68.2	49.6	62.0	74.3	54.2
New Mexico	42.4	50.8	35.4	43.4	52.0	36.1	31.8	29.2	33.8
Seattle-Puget Sound	47.4	54.2	41.6	47.7	54.6	41.8	52.6	58.4	47.8
Utah	39.7	46.3	34.1	40.0	46.6	34.5	54.8	81.2	-
9 SEER Areas ^b	50.3	58.5	43.8	49.7	58.0	43.1	60.3	70.2	54.0
11 SEER Areas ^b	49.1	57.1	42.8	48.5	56.5	42.1	60.2	69.9	53.9
13 SEER Areas ^b	49.2	57.3	42.9	48.5	56.5	42.0	60.3	70.1	53.9
17 SEER Areas ^b	50.6	59.2	43.8	50.1	58.9	43.2	61.2	71.2	54.5

^a Rates are per 100,000 and are age-adjusted to the 2000 US Std Population (19 age groups - Census P25-1130)

^b The SEER 9 areas are San Francisco, Connecticut, Detroit, Hawaii, Iowa, New Mexico, Seattle, Utah and Atlanta.

The SEER 11 areas comprise the SEER 9 areas plus San Jose-Monterey and Los Angeles.

The SEER 13 areas comprise the SEER 11 areas plus the Alaska Native Registry and Rural Georgia.

The SEER 17 areas comprise the SEER 13 areas plus California excluding SF/SJM/LA, Kentucky, Louisiana and New Jersey.

- Statistic not shown. Rate based on less than 16 cases for the time interval.

Table VI-19
COLON AND RECTUM CANCER (Invasive)

AGE-ADJUSTED SEER DEATH RATES^a
By Registry, Race and Sex

	All Races			Whites			Blacks		
	Total	Males	Females	Total	Males	Females	Total	Males	Females
<u>SEER DEATH RATES^a, 2001-2005</u>									
REGISTRY									
Atlanta & Rural Georgia	17.1	20.4	15.1	14.1	17.6	11.8	25.7	29.5	23.7
Atlanta	16.9	20.1	15.0	14.1	17.4	11.9	25.4	29.1	23.5
Rural Georgia	20.5	26.0	16.5	14.8	19.9	10.2	31.6	37.3	27.9
California	16.7	19.8	14.3	16.7	19.8	14.2	25.8	29.6	23.0
Greater Bay Area	15.7	18.4	13.6	15.7	18.2	13.6	24.0	29.5	20.3
San Francisco-Oakland	16.7	19.7	14.3	16.4	19.3	14.1	24.3	29.2	20.9
San Jose-Monterey	13.6	15.6	12.1	14.2	16.1	12.7	22.8	33.4	15.0
Los Angeles	17.2	20.4	14.8	16.5	19.8	14.1	27.4	32.0	24.2
Greater California	16.8	20.0	14.3	17.0	20.3	14.4	24.8	26.7	23.3
Connecticut	17.7	20.7	15.5	17.6	20.8	15.2	21.6	24.5	20.0
Detroit	19.1	22.9	16.6	17.8	21.3	15.4	25.3	31.2	21.6
Hawaii	16.1	21.1	11.8	16.2	20.3	12.3	-	-	-
Iowa	19.5	23.7	16.5	19.5	23.6	16.5	24.8	38.5	-
Kentucky	22.0	26.6	18.9	21.6	26.3	18.3	31.2	33.2	30.3
Louisiana	22.3	28.5	17.9	20.0	26.2	15.6	29.8	36.9	25.1
New Jersey	20.8	24.9	17.9	20.7	24.8	17.7	25.8	30.8	22.7
New Mexico	16.9	20.6	13.8	17.1	20.8	14.0	19.4	26.0	-
Seattle-Puget Sound	16.4	18.8	14.4	16.4	19.0	14.2	23.2	23.9	21.6
Utah	13.6	15.9	11.8	13.6	15.9	11.8	-	-	-
9 SEER Areas ^b	17.4	20.6	14.9	17.0	20.2	14.6	24.4	29.1	21.5
11 SEER Areas ^b	17.1	20.3	14.7	16.8	19.9	14.4	25.2	29.8	22.1
13 SEER Areas ^b	17.1	20.3	14.7	16.7	19.9	14.3	25.3	29.9	22.2
17 SEER Areas ^b	18.1	21.6	15.5	17.8	21.3	15.1	26.4	31.1	23.2
Total U.S.	18.8	22.7	15.9	18.3	22.1	15.3	26.1	31.8	22.4

^a US Mortality Files, National Center for Health Statistics, Centers for Disease Control and Prevention. Rates are per 100,000 and are age-adjusted to the 2000 US Std Population (19 age groups - Census P25-1130).

^b The SEER 9 areas are San Francisco, Connecticut, Detroit, Hawaii, Iowa, New Mexico, Seattle, Utah and Atlanta.

The SEER 11 areas comprise the SEER 9 areas plus San Jose-Monterey and Los Angeles.

The SEER 13 areas comprise the SEER 11 areas plus the Alaska Native Registry and Rural Georgia.

The SEER 17 areas comprise the SEER 13 areas plus California excluding SF/SJM/LA, Kentucky, Louisiana and New Jersey.

- Statistic not shown. Rate based on less than 16 cases for the time interval.

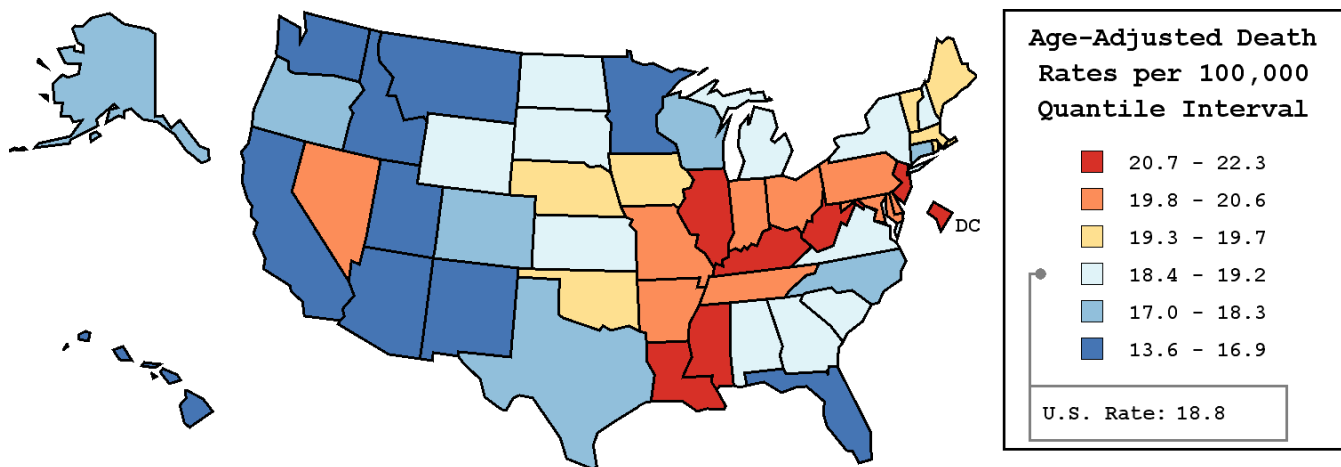
Table VI-20
COLON AND RECTUM CANCER (Invasive)

AVERAGE ANNUAL AGE-ADJUSTED CANCER DEATH^a RATES BY STATE, ALL RACES, 2001-2005

Males and Females

State	Rate	SE	Rank	PD
TOTAL U.S.	18.8	0.04		
High Five States				
Louisiana	22.3 ^b	0.32	(01)	18.6 ^c
West Virginia	22.3 ^b	0.45	(02)	18.6 ^c
Kentucky	22.0 ^b	0.33	(03)	17.0 ^c
D.C.	21.4	0.86	(04)	13.8 ^c
Mississippi	21.0 ^b	0.39	(05)	11.7 ^c
Low Five States				
California	16.7 ^b	0.10	(47)	-11.2 ^c
Arizona	16.2 ^b	0.24	(48)	-13.8 ^c
Hawaii	16.1 ^b	0.49	(49)	-14.4 ^c
Idaho	15.6 ^b	0.49	(50)	-17.0 ^c
Utah	13.6 ^b	0.40	(51)	-27.7 ^c

State	Rate	SE	Rank	PD	State	Rate	SE	Rank	PD
Alabama	18.7	0.28	(32)	-0.5	Montana	16.8	0.57	(46)	-10.6 ^c
Alaska	17.9	1.06	(37)	-4.8	Nebraska	19.7	0.46	(17)	4.8
Arizona	16.2 ^b	0.24	(48)	-13.8 ^c	Nevada	20.4	0.46	(12)	8.5
Arkansas	20.4 ^b	0.37	(11)	8.5	New Hampshire	18.9	0.54	(29)	0.5
California	16.7 ^b	0.10	(47)	-11.2 ^c	New Jersey	20.8 ^b	0.21	(06)	10.6 ^c
Colorado	17.2 ^b	0.31	(41)	-8.5	New Mexico	16.9 ^b	0.43	(44)	-10.1 ^c
Connecticut	17.7 ^b	0.30	(39)	-5.9	New York	19.2	0.14	(26)	2.1
Delaware	19.8	0.68	(16)	5.3	North Carolina	18.3	0.21	(35)	-2.7
D.C.	21.4	0.86	(04)	13.8 ^c	North Dakota	18.9	0.71	(30)	0.5
Florida	16.9 ^b	0.12	(43)	-10.1 ^c	Ohio	20.6 ^b	0.18	(09)	9.6
Georgia	18.5	0.23	(33)	-1.6	Oklahoma	19.5	0.33	(18)	3.7
Hawaii	16.1 ^b	0.49	(49)	-14.4 ^c	Oregon	17.6 ^b	0.31	(40)	-6.4
Idaho	15.6 ^b	0.49	(50)	-17.0 ^c	Pennsylvania	20.6 ^b	0.17	(10)	9.6
Illinois	20.7 ^b	0.18	(07)	10.1 ^c	Rhode Island	19.3	0.56	(21)	2.7
Indiana	20.6 ^b	0.26	(08)	9.6	South Carolina	19.2	0.31	(25)	2.1
Iowa	19.5	0.33	(20)	3.7	South Dakota	19.2	0.66	(24)	2.1
Kansas	18.9	0.36	(28)	0.5	Tennessee	20.0 ^b	0.26	(13)	6.4
Kentucky	22.0 ^b	0.33	(03)	17.0 ^c	Texas	17.9 ^b	0.14	(38)	-4.8
Louisiana	22.3 ^b	0.32	(01)	18.6 ^c	Utah	13.6 ^b	0.40	(51)	-27.7 ^c
Maine	19.5	0.51	(19)	3.7	Vermont	19.3	0.77	(22)	2.7
Maryland	20.0 ^b	0.28	(14)	6.4	Virginia	18.9	0.23	(27)	0.5
Massachusetts	19.3	0.23	(23)	2.7	Washington	16.9 ^b	0.24	(45)	-10.1 ^c
Michigan	18.7	0.19	(31)	-0.5	West Virginia	22.3 ^b	0.45	(02)	18.6 ^c
Minnesota	16.9 ^b	0.26	(42)	-10.1 ^c	Wisconsin	18.0	0.25	(36)	-4.3
Mississippi	21.0 ^b	0.39	(05)	11.7 ^c	Wyoming	18.4	0.86	(34)	-2.1
Missouri	19.9 ^b	0.25	(15)	5.9					



^a US Mortality Files, National Center for Health Statistics, Centers for Disease Control and Prevention. Rates are per 100,000 and are age-adjusted to the 2000 US Std Population (19 age groups - Census P25-1130).
^b Difference between state rate and total U.S. rate is statistically significant ($p \leq .0002$).
^c Absolute percent difference between state rate and total U.S. rate is 10% or more.
SE Standard error of the rate.
PD Percent difference between state rate and total U.S. rate.

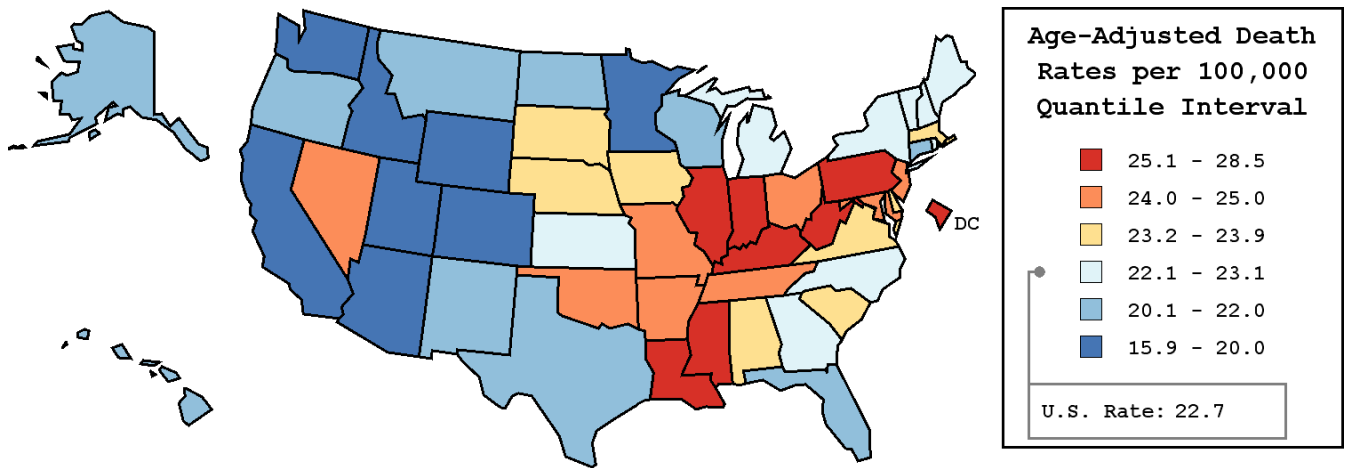
Table VI-21
COLON AND RECTUM CANCER (Invasive)

AVERAGE ANNUAL AGE-ADJUSTED CANCER DEATH^a RATES BY STATE, ALL RACES, 2001-2005

Males

State	Rate	SE	Rank	PD
TOTAL U.S.	22.7	0.06		
High Five States				
Louisiana	28.5 ^b	0.58	(01)	25.6 ^c
West Virginia	27.0 ^b	0.79	(02)	18.9 ^c
D.C.	27.0	1.58	(03)	18.9 ^c
Kentucky	26.6 ^b	0.58	(04)	17.2 ^c
Illinois	25.8 ^b	0.33	(05)	13.7 ^c
Low Five States				
Washington	19.7 ^b	0.40	(47)	-13.2 ^c
Wyoming	19.7	1.37	(48)	-13.2 ^c
Arizona	19.5 ^b	0.40	(49)	-14.1 ^c
Idaho	18.2 ^b	0.81	(50)	-19.8 ^c
Utah	15.9 ^b	0.67	(51)	-30.0 ^c

State	Rate	SE	Rank	PD	State	Rate	SE	Rank	PD
Alabama	23.9	0.51	(17)	5.3	Montana	20.5	0.97	(42)	-9.7
Alaska	21.6	1.80	(37)	-4.8	Nebraska	23.5	0.78	(21)	3.5
Arizona	19.5 ^b	0.40	(49)	-14.1 ^c	Nevada	24.6	0.77	(13)	8.4
Arkansas	25.0 ^b	0.63	(10)	10.1 ^c	New Hampshire	23.0	0.95	(28)	1.3
California	19.8 ^b	0.17	(46)	-12.8 ^c	New Jersey	24.9 ^b	0.37	(12)	9.7
Colorado	20.0 ^b	0.52	(44)	-11.9 ^c	New Mexico	20.6	0.73	(41)	-9.3
Connecticut	20.7 ^b	0.52	(40)	-8.8	New York	23.1	0.24	(26)	1.8
Delaware	23.8	1.17	(18)	4.8	North Carolina	22.1	0.37	(33)	-2.6
D.C.	27.0	1.58	(03)	18.9 ^c	North Dakota	22.0	1.17	(34)	-3.1
Florida	20.3 ^b	0.21	(43)	-10.6 ^c	Ohio	24.9 ^b	0.32	(11)	9.7
Georgia	22.7	0.41	(30)	0.0	Oklahoma	24.3	0.57	(15)	7.0
Hawaii	21.1	0.83	(38)	-7.0	Oregon	21.0	0.51	(39)	-7.5
Idaho	18.2 ^b	0.81	(50)	-19.8 ^c	Pennsylvania	25.4 ^b	0.29	(08)	11.9 ^c
Illinois	25.8 ^b	0.33	(05)	13.7 ^c	Rhode Island	23.0	0.98	(27)	1.3
Indiana	25.7 ^b	0.46	(06)	13.2 ^c	South Carolina	23.7	0.54	(20)	4.4
Iowa	23.7	0.58	(19)	4.4	South Dakota	23.4	1.12	(22)	3.1
Kansas	22.4	0.61	(32)	-1.3	Tennessee	25.0 ^b	0.47	(09)	10.1 ^c
Kentucky	26.6 ^b	0.58	(04)	17.2 ^c	Texas	21.9	0.24	(36)	-3.5
Louisiana	28.5 ^b	0.58	(01)	25.6 ^c	Utah	15.9 ^b	0.67	(51)	-30.0 ^c
Maine	22.8	0.86	(29)	0.4	Vermont	23.1	1.32	(25)	1.8
Maryland	24.1	0.49	(16)	6.2	Virginia	23.4	0.42	(23)	3.1
Massachusetts	23.3	0.41	(24)	2.6	Washington	19.7 ^b	0.40	(47)	-13.2 ^c
Michigan	22.4	0.33	(31)	-1.3	West Virginia	27.0 ^b	0.79	(02)	18.9 ^c
Minnesota	19.8 ^b	0.44	(45)	-12.8 ^c	Wisconsin	22.0	0.43	(35)	-3.1
Mississippi	25.5 ^b	0.68	(07)	12.3 ^c	Wyoming	19.7	1.37	(48)	-13.2 ^c
Missouri	24.4 ^b	0.44	(14)	7.5					



^a US Mortality Files, National Center for Health Statistics, Centers for Disease Control and Prevention. Rates are per 100,000 and are age-adjusted to the 2000 US Std Population (19 age groups - Census P25-1130).
^b Difference between state rate and total U.S. rate is statistically significant ($p \leq .0002$).
^c Absolute percent difference between state rate and total U.S. rate is 10% or more.
SE Standard error of the rate.
PD Percent difference between state rate and total U.S. rate.

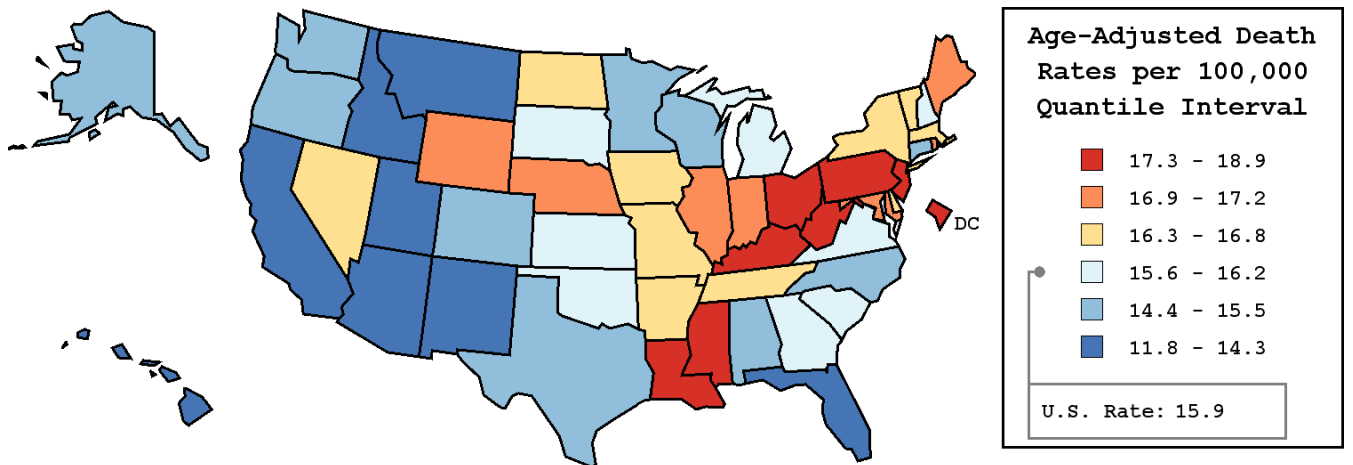
Table VI-22
COLON AND RECTUM CANCER (Invasive)

AVERAGE ANNUAL AGE-ADJUSTED CANCER DEATH^a RATES BY STATE, ALL RACES, 2001-2005

Females

State	Rate	SE	Rank	PD
TOTAL U.S.	15.9	0.04		
High Five States				
Kentucky	18.9 ^b	0.39	(01)	18.9 ^c
West Virginia	18.8 ^b	0.55	(02)	18.2 ^c
D.C.	18.1	1.02	(03)	13.8 ^c
New Jersey	17.9 ^b	0.26	(04)	12.6 ^c
Louisiana	17.9 ^b	0.38	(05)	12.6 ^c
Low Five States				
Montana	13.8	0.70	(47)	-13.2 ^c
Arizona	13.5 ^b	0.29	(48)	-15.1 ^c
Idaho	13.4 ^b	0.61	(49)	-15.7 ^c
Hawaii	11.8 ^b	0.56	(50)	-25.8 ^c
Utah	11.8 ^b	0.50	(51)	-25.8 ^c

State	Rate	SE	Rank	PD	State	Rate	SE	Rank	PD
Alabama	15.2	0.33	(36)	-4.4	Montana	13.8	0.70	(47)	-13.2 ^c
Alaska	14.8	1.30	(40)	-6.9	Nebraska	16.9	0.56	(14)	6.3
Arizona	13.5 ^b	0.29	(48)	-15.1 ^c	Nevada	16.8	0.56	(17)	5.7
Arkansas	16.8	0.44	(16)	5.7	New Hampshire	16.1	0.66	(27)	1.3
California	14.3 ^b	0.13	(44)	-10.1 ^c	New Jersey	17.9 ^b	0.26	(04)	12.6 ^c
Colorado	15.1	0.38	(38)	-5.0	New Mexico	13.8 ^b	0.52	(46)	-13.2 ^c
Connecticut	15.5	0.37	(35)	-2.5	New York	16.5 ^b	0.17	(23)	3.8
Delaware	16.7	0.83	(18)	5.0	North Carolina	15.5	0.25	(34)	-2.5
D.C.	18.1	1.02	(03)	13.8 ^c	North Dakota	16.5	0.88	(24)	3.8
Florida	14.2 ^b	0.15	(45)	-10.7 ^c	Ohio	17.5 ^b	0.22	(07)	10.1 ^c
Georgia	15.7	0.27	(33)	-1.3	Oklahoma	16.0	0.39	(28)	0.6
Hawaii	11.8 ^b	0.56	(50)	-25.8 ^c	Oregon	15.1	0.38	(37)	-5.0
Idaho	13.4 ^b	0.61	(49)	-15.7 ^c	Pennsylvania	17.3 ^b	0.20	(08)	8.8
Illinois	17.2 ^b	0.22	(09)	8.2	Rhode Island	17.1	0.69	(10)	7.5
Indiana	17.0 ^b	0.30	(12)	6.9	South Carolina	15.9	0.36	(30)	0.0
Iowa	16.5	0.40	(25)	3.8	South Dakota	15.8	0.79	(31)	-0.6
Kansas	16.2	0.44	(26)	1.9	Tennessee	16.5	0.31	(20)	3.8
Kentucky	18.9 ^b	0.39	(01)	18.9 ^c	Texas	14.7 ^b	0.17	(42)	-7.5
Louisiana	17.9 ^b	0.38	(05)	12.6 ^c	Utah	11.8 ^b	0.50	(51)	-25.8 ^c
Maine	17.0	0.62	(13)	6.9	Vermont	16.5	0.93	(21)	3.8
Maryland	16.9	0.33	(15)	6.3	Virginia	15.7	0.28	(32)	-1.3
Massachusetts	16.5	0.28	(22)	3.8	Washington	14.6 ^b	0.30	(43)	-8.2
Michigan	15.9	0.23	(29)	0.0	West Virginia	18.8 ^b	0.55	(02)	18.2 ^c
Minnesota	14.7 ^b	0.32	(41)	-7.5	Wisconsin	15.0	0.30	(39)	-5.7
Mississippi	17.9 ^b	0.47	(06)	12.6 ^c	Wyoming	17.0	1.12	(11)	6.9
Missouri	16.7	0.30	(19)	5.0					



^a US Mortality Files, National Center for Health Statistics, Centers for Disease Control and Prevention. Rates are per 100,000 and are age-adjusted to the 2000 US Std Population (19 age groups - Census P25-1130).

^b Difference between state rate and total U.S. rate is statistically significant ($p \leq .0002$).

^c Absolute percent difference between state rate and total U.S. rate is 10% or more.

SE Standard error of the rate.

PD Percent difference between state rate and total U.S. rate.

Table VI-23
COLON AND RECTUM CANCER (Invasive)

Estimated United States Cancer Prevalence Counts^a on January 1, 2005
By Race/Ethnicity, Sex and Years Since Diagnosis

Years Since Diagnosis	0 to <5	5 to <10	10 to <15	15 to <20	20 to <25	25 to <30	0 to <15 ^e	0 to <30 ^e	>=30 ^g	Complete ^h
<u>Race/Sex</u>										
All Races ^b	414,431	254,745	166,882	113,245	64,365	36,616	836,057	1,050,283	45,000	1,095,283
Males	209,554	126,290	81,920	55,117	28,251	14,443	417,764	515,575	16,300	531,875
Females	204,877	128,455	84,962	58,128	36,114	22,173	418,293	534,708	28,700	563,408
White ^b	353,567	222,365	147,039	100,310	57,833	32,917	722,972	914,032	40,137	954,169
Males	180,274	111,254	72,595	49,312	25,614	13,030	364,124	452,080	14,680	466,760
Females	173,293	111,111	74,444	50,998	32,219	19,887	358,848	461,952	25,457	487,409
Black ^b	41,826	21,999	13,724	9,403	4,640	2,471	77,549	94,063	3,145	97,208
Males	19,169	9,449	6,118	3,940	1,657	846	34,736	41,179	1,052	42,231
Females	22,657	12,550	7,606	5,463	2,983	1,625	42,813	52,884	2,093	54,977
Asian/Pacific Islander ^c	13,422	7,484	4,338	+	+	+	25,245	+	+	+
Males	6,984	3,951	2,196	+	+	+	13,132	+	+	+
Females	6,438	3,533	2,142	+	+	+	12,113	+	+	+
Hispanic ^d	21,478	11,024	6,580	+	+	+	39,082	+	+	+
Males	11,505	5,926	3,291	+	+	+	20,722	+	+	+
Females	9,973	5,098	3,289	+	+	+	18,360	+	+	+

Estimated prevalence percent^a on January 1, 2005, of the SEER 11 population diagnosed in the previous 15 years
By Age at Prevalence, Race/Ethnicity and Sex

Age at Prevalence	Age Specific (Crude)										Age-Adjusted ^f
	All Ages	0-9	10-19	20-29	30-39	40-49	50-59	60-69	70-79	80+	All Ages
<u>Race/Sex</u>											
All Races ^c	0.2532%	-	0.0003%	0.0040%	0.0214%	0.0843%	0.2945%	0.7579%	1.5313%	2.2292%	0.2696%
Males	0.2574%	-	0.0002%	0.0040%	0.0218%	0.0881%	0.3317%	0.9023%	1.8701%	2.5412%	0.3163%
Females	0.2491%	-	0.0004%	0.0041%	0.0209%	0.0805%	0.2591%	0.6279%	1.2719%	2.0570%	0.2337%
White ^c	0.2675%	-	0.0004%	0.0041%	0.0211%	0.0817%	0.2816%	0.7495%	1.5457%	2.2752%	0.2693%
Males	0.2708%	-	0.0003%	0.0041%	0.0214%	0.0856%	0.3209%	0.8972%	1.8844%	2.5918%	0.3167%
Females	0.2642%	-	0.0005%	0.0041%	0.0207%	0.0778%	0.2430%	0.6130%	1.2807%	2.1028%	0.2322%
Black ^c	0.1971%	-	-	0.0031%	0.0215%	0.0957%	0.3678%	0.9130%	1.5638%	1.9501%	0.2845%
Males	0.1893%	-	-	0.0028%	0.0213%	0.1000%	0.4009%	1.0187%	1.8080%	2.1170%	0.3170%
Females	0.2042%	-	-	0.0035%	0.0217%	0.0919%	0.3405%	0.8304%	1.4022%	1.8696%	0.2622%
Asian/Pacific Islander ^c	0.2216%	-	-	0.0038%	0.0208%	0.0859%	0.3022%	0.6740%	1.3787%	2.0007%	0.2480%
Males	0.2369%	-	-	0.0041%	0.0226%	0.0889%	0.3282%	0.8173%	1.7612%	2.3637%	0.2975%
Females	0.2073%	-	-	0.0034%	0.0192%	0.0832%	0.2795%	0.5537%	1.1010%	1.7593%	0.2112%
Hispanic ^d	0.0915%	-	-	0.0030%	0.0161%	0.0636%	0.2147%	0.5509%	1.1124%	1.4555%	0.1922%
Males	0.0931%	-	-	0.0034%	0.0156%	0.0630%	0.2405%	0.6781%	1.4755%	1.6414%	0.2327%
Females	0.0899%	-	-	0.0026%	0.0167%	0.0643%	0.1904%	0.4442%	0.8500%	1.3485%	0.1621%

^a US 2005 cancer prevalence counts are based on 2005 cancer prevalence proportions from the SEER registries and 1/1/2005 US population estimates based on the average of 2004 and 2005 population estimates from the US Bureau of the Census. Prevalence was calculated using the First Malignant Primary Only for a person.

^{b c d} Statistics based on (b) SEER 9 Areas (c) SEER 11 Areas and Rural Georgia (d) NHIA for Hispanic for SEER 11 Areas and Rural Georgia.

^e Maximum limited-duration prevalence: 30 years for 1975-2005 SEER 9 data; 15 years for 1990-2005 SEER 11 data (used to calculate prevalence for Hispanics and Asian Pacific Islanders).

^f Percentages are age-adjusted to the 2000 US Standard Population (19 age groups - Census P25-1130) by 5-year age groups.

^{g h} (g) Cases diagnosed more than 30 years ago were estimated using the completeness index method (Capocaccia et. al. 1997, Merrill et. al. 2000). (h) Complete prevalence is obtained by summing 0 to <30 and >=30.

- Statistic not shown. Statistic based on fewer than 5 cases estimated alive in SEER for the time interval.

+ Not available.

Table VI-24

COLON AND RECTUM CANCER(Invasive)

Percent Distribution and Counts by Histology among Histologically Confirmed Cases, 2001-2005
Both Sexes by Race

Histology ^a	All Races		White		Black		API		AI/AN		Hispanic ^b	
	Count	Percent	Count	Percent	Count	Percent	Count	Percent	Count	Percent	Count	Percent
Carcinoma	174,308	99.5%	143,336	99.5%	17,283	99.5%	11,673	99.6%	755	99.5%	13,988	99.5%
Epidermoid carcinoma ^c (8051-8131)	708	0.4%	600	0.4%	87	0.5%	-	-	-	-	69	0.5%
Squamous cell carcinoma (8070-8078,8083-8084)	640	0.4%	540	0.4%	82	0.5%	-	-	-	-	58	0.4%
Adenocarcinoma (8050,8140-8147, 8160-8162,8180-8221, 8250-8507,8520-8551,8560, 8570-8574,8576,8940-8941)	166,422	95.0%	137,511	95.5%	16,133	92.9%	11,061	94.4%	703	92.6%	13,149	93.5%
Adenocarcinoma, NOS (8140)	114,780	65.5%	94,450	65.6%	11,310	65.1%	7,938	67.7%	532	70.1%	9,027	64.2%
Adenocarcinoma in adenomatous polyp (8210)	10,943	6.2%	8,958	6.2%	943	5.4%	853	7.3%	38	5.0%	805	5.7%
Adenocarcinoma in villous adenoma (8261)	5,801	3.3%	4,852	3.4%	552	3.2%	325	2.8%	-	-	526	3.7%
Mucinous adenocarcinoma (8470-8473,8480,8482)	13,393	7.6%	11,392	7.9%	1,158	6.7%	744	6.3%	53	7.0%	1,149	8.2%
Mucin-producing adenocarcinoma (8481)	4,859	2.8%	4,005	2.8%	600	3.5%	229	2.0%	-	-	368	2.6%
Signet ring adenocarcinoma (8490)	2,022	1.2%	1,714	1.2%	159	0.9%	129	1.1%	-	-	168	1.2%
Other adenocarcinomas ^d	14,624	8.4%	12,140	8.4%	1,411	8.1%	843	7.2%	44	5.8%	1,106	7.9%
Other specific carcinomas (8012-8015,8030-8046, 8150-8155,8170-8175, 8230-8249,8508,8510-8513, 8561-8562,8575,8580-8671)	5,554	3.2%	3,894	2.7%	882	5.1%	512	4.4%	46	6.1%	619	4.4%
Neuroendocrine carcinoid (8240-8245)	4,675	2.7%	3,153	2.2%	800	4.6%	466	4.0%	41	5.4%	545	3.9%
Other ^e	879	0.5%	741	0.5%	82	0.5%	46	0.4%	-	-	74	0.5%
Unspecified, Carcinoma, NOS (8010-8011, 8020-8022)	1,624	0.9%	1,331	0.9%	181	1.0%	92	0.8%	-	-	151	1.1%

Source: SEER 17 areas (San Francisco, Connecticut, Detroit, Hawaii, Iowa, New Mexico, Seattle, Utah, Atlanta, San Jose-Monterey, Los Angeles, Alaska Native Registry, Rural Georgia, California excluding SF/SJM/LA, Kentucky, Louisiana and New Jersey). Percents may not sum to 100 due to rounding.

^a - Statistic not shown due to fewer than 16 cases during the time period.

^b - Excludes Kaposi Sarcoma, mesothelioma, lymphomas, leukemias, myelomas, lymphoreticular, and immunoproliferative diseases.

^c - Hispanic is not mutually exclusive from whites, blacks, Asian/Pacific Islanders, and American Indians/Alaska Natives.

^d - Underlying incidence data for Hispanics are based on NHIA and exclude cases from the Alaska Native Registry and Kentucky.

^e - Epidermoid carcinoma includes squamous, basal, and transitional cell carcinomas.

^d - Includes histologies 8050, 8141-8147, 8160-8162, 8180-8204, 8211-8221, 8250-8260, 8262-8264, 8270-8463, 8500-8507, 8514, 8520-8551, 8560, 8570-8574, 8576, 8940-8941.

^e - Includes histologies 8012-8015, 8030-8046, 8150-8155, 8170-8175, 8230-8231, 8246-8249, 8508, 8510-8513, 8561-8562, 8575, 8580-8671.

Table VI-24 - continued

COLON AND RECTUM CANCER(Invasive)

Percent Distribution and Counts by Histology among Histologically Confirmed Cases, 2001-2005
Both Sexes by Race

Histology ^a	All Races		White		Black		API		AI/AN		Hispanic ^b	
	Count	Percent	Count	Percent	Count	Percent	Count	Percent	Count	Percent	Count	Percent
Sarcoma and other soft tissue tumors (8680-8713,8800-8921, 8990-8991,9040-9044, 9120-9136,9150-9252, 9370-9373,9540-9582)	101	0.1%	77	0.1%	-	-	-	-	-	-	-	-
Other specific types (8720-8790,8930-8936, 8950-8983,9000-9030, 9060-9110,9260-9365, 9380-9539)	224	0.1%	181	0.1%	20	0.1%	22	0.2%	-	-	22	0.2%
Unspecified (8000-8005)	504	0.3%	420	0.3%	53	0.3%	20	0.2%	-	-	39	0.3%
Total ^c	175,137	100.0%	144,014	100.0%	17,369	100.0%	11,722	100.0%	759	100.0%	14,057	100.0%

Source: SEER 17 areas (San Francisco, Connecticut, Detroit, Hawaii, Iowa, New Mexico, Seattle, Utah, Atlanta, San Jose-Monterey, Los Angeles, Alaska Native Registry, Rural Georgia, California excluding SF/SJM/LA, Kentucky, Louisiana and New Jersey). Percents may not sum to 100 due to rounding.

- Statistic not shown due to fewer than 16 cases during the time period.

^a Excludes Kaposi Sarcoma, mesothelioma, lymphomas, leukemias, myelomas, lymphoreticular, and immunoproliferative diseases.

^b Hispanic is not mutually exclusive from whites, blacks, Asian/Pacific Islanders, and American Indians/Alaska Natives.

Underlying incidence data for Hispanics are based on NHIA and exclude cases from the Alaska Native Registry and Kentucky.

^c Total includes carcinoma cases from the previous page.

SEER Incidence, Delay Adjusted Incidence and US Death Rates^a Colon and Rectum Cancer, by Race and Sex

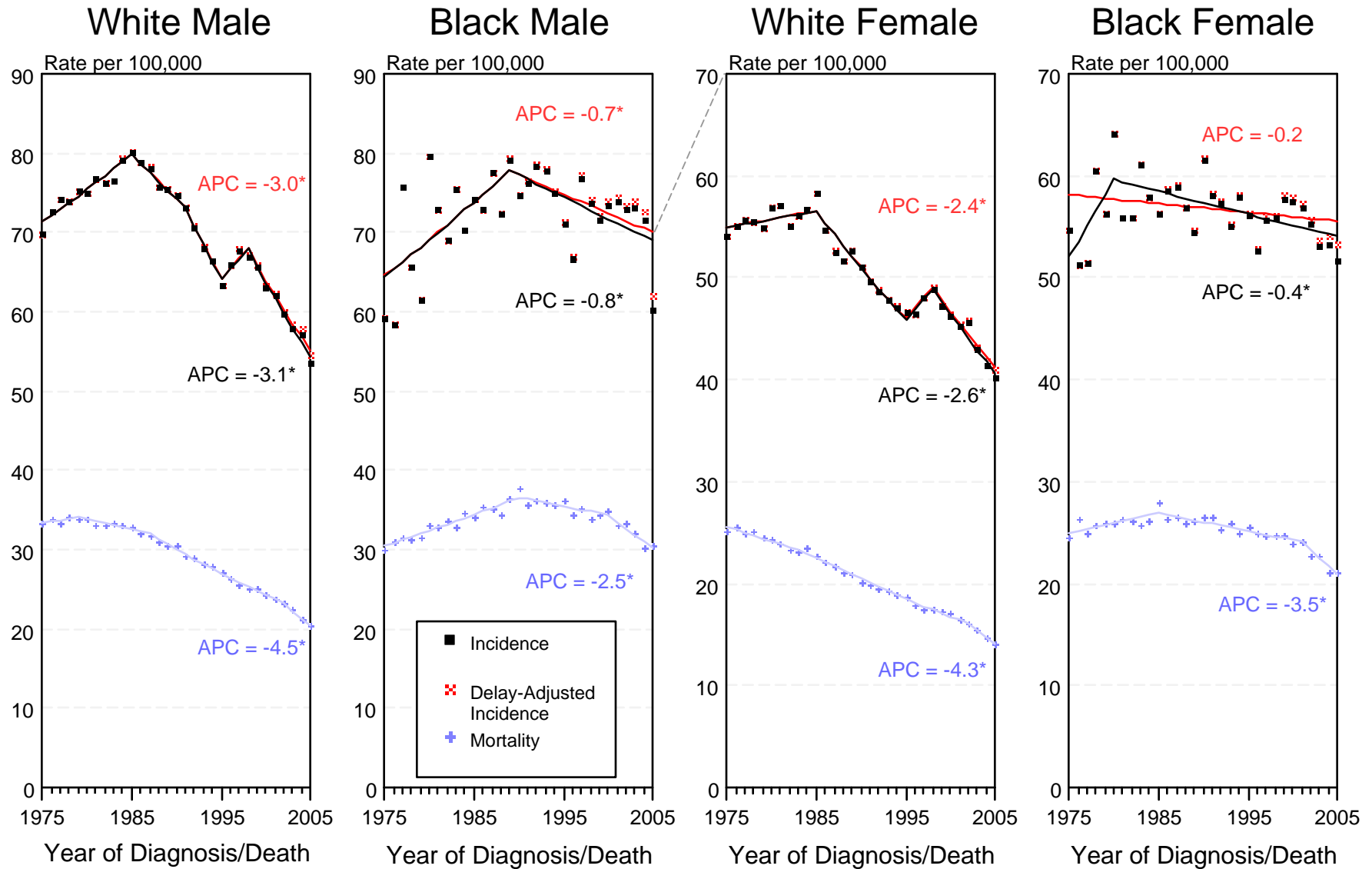


Figure VI-1

^a Source: SEER 9 areas and US Mortality Files (National Center for Health Statistics, CDC). Rates are age-adjusted to the 2000 US Std Population (19 age groups - Census P25-1103). Regression lines and APCs are calculated using the Joinpoint Regression Program Version 3.3.1, April 2008, National Cancer Institute. The APC is the Annual Percent Change for the regression line segments. The APC shown on the graph is for the most recent trend.
* The APC is significantly different from zero ($p < 0.05$).

SEER Incidence and US Death Rates^a Colon and Rectum Cancer, Both Sexes

Joinpoint Analyses for Whites and Blacks from 1975-2005
and for Asian/Pacific Islanders, American Indians/Alaska Natives and Hispanics from 1992-2005

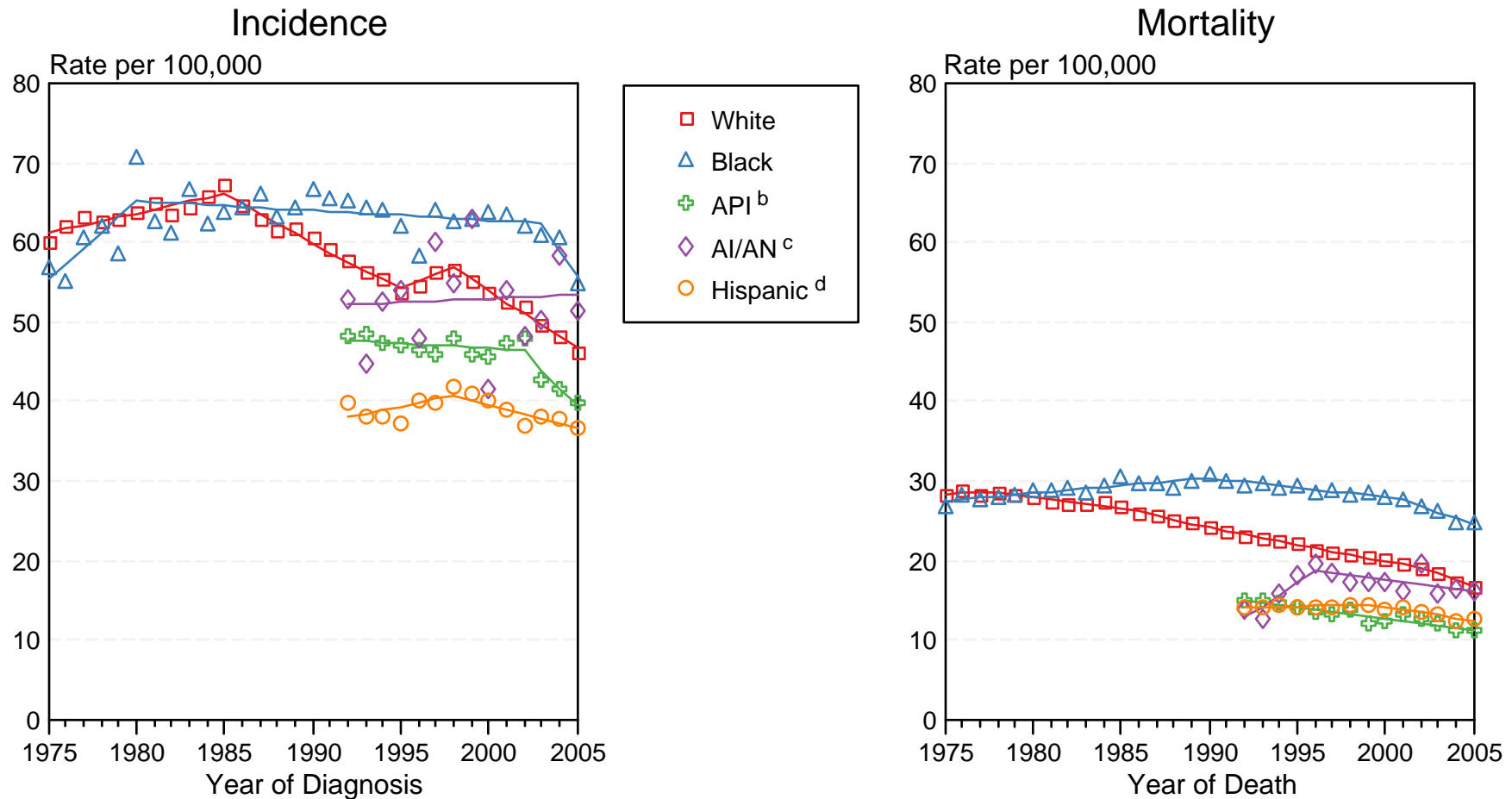


Figure VI-2

Source: Incidence data for whites and blacks are from the SEER 9 areas (San Francisco, Connecticut, Detroit, Hawaii, Iowa, New Mexico, Seattle, Utah, Atlanta).

Incidence data for Asian/Pacific Islanders, American Indians/Alaska Natives and Hispanics are from the SEER 13 Areas (SEER 9 Areas, San Jose-Monterey, Los Angeles, Alaska Native Registry and Rural Georgia). Mortality data are from US Mortality Files, National Center for Health Statistics, CDC.

^a Rates are age-adjusted to the 2000 US Std Population (19 age groups - Census P25-1103).

Regression lines are calculated using the Joinpoint Regression Program Version 3.3.1, April 2008, National Cancer Institute. Joinpoint analyses for Whites and Blacks during the 1975-2005 period allow a maximum of 4 joinpoints. Analyses for other ethnic groups during the period 1992-2005 allow a maximum of 3 joinpoints.

^b API = Asian/Pacific Islander.

^c AI/AN = American Indian/Alaska Native. Rates for American Indian/Alaska Native are based on the CHSDA(Contract Health Service Delivery Area) counties.

^d Hispanic is not mutually exclusive from whites, blacks, Asian/Pacific Islanders, and American Indians/Alaska Natives. Incidence data for Hispanics are based on NHIA and exclude cases from the Alaska Native Registry. Mortality data for Hispanics exclude cases from Connecticut, Maine, Maryland, Minnesota, New Hampshire, New York, North Dakota, Oklahoma, and Vermont.