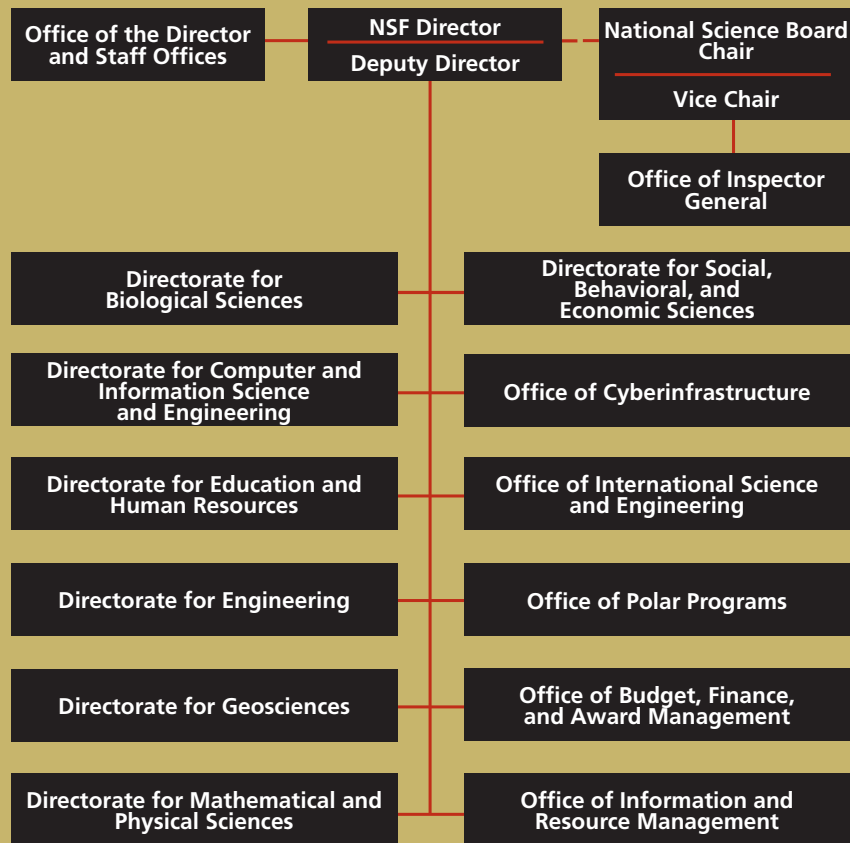


FY 2006 Organization Chart



NSF is headed by a Director who is appointed by the President and confirmed by the U.S. Senate. A description of each directorate and management office and a listing of NSF's executive staff and officers can be found in appendixes 1 and 2. A 24-member National Science Board (NSB), also appointed by the President with the consent of the Senate, meets about six times a year to establish the overall policies of the Foundation. The NSB, made up of prominent contributors to the science, mathematics, engineering, and education communities, also serves the President and the Congress as an independent advisory body on policies related to the U.S. science and engineering enterprise. A listing of the FY 2006 NSB members can be found in appendix 3.

The NSF workforce includes approximately 1,400 full-time staff. To complement the permanent staff, NSF regularly recruits visiting scientists, engineers, and educators who are leaders in their fields. Recruiting active researchers and educators to fill rotating assignments infuses new talent and expertise into NSF and is integral to the Foundation's mission of supporting the entire spectrum of science and engineering research and education, particularly research at the frontier. Rotators make up about 15 percent of NSF's workforce. In addition, NSF employs contractors who are engaged in commercial administrative activities.