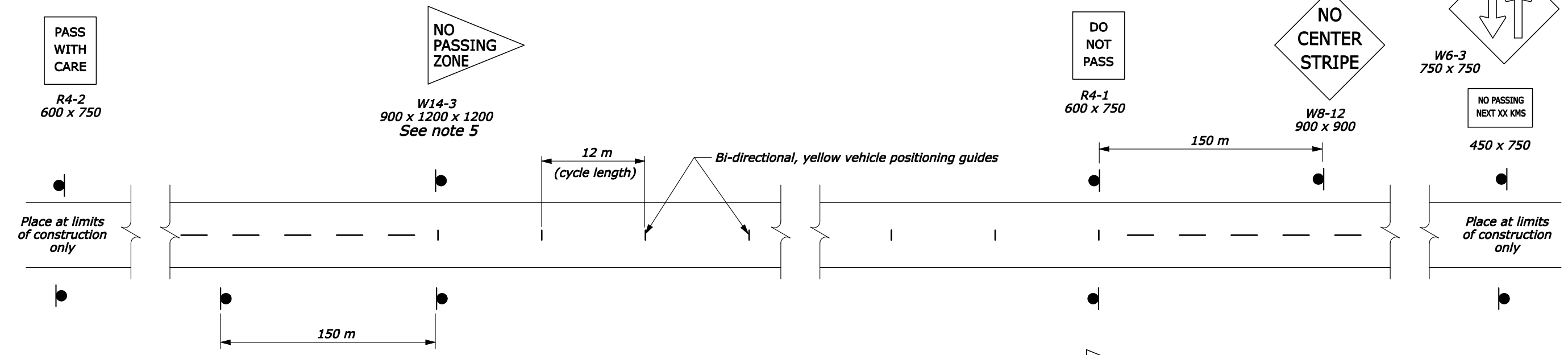


NOTES:

1. Unless otherwise shown, dimensions are in millimeters.
2. For periods as noted in Table A, pavement may be unmarked if appropriate vehicle positioning guides are provided.
3. Typical spacing between Vehicle Position Guides is 12 m as shown. In areas of severe curvature the spacing is 6 m. Areas of severe curvature are shown in the plans or provided in the Vehicle Positioning Guide Schedule.
4. See Section 718.21(b) requirements for vehicle positioning guides.
5. When ADT > 1000 and special hazards are present, supplement the R4-1 sign at the beginning of each no passing zone with a W14-3 sign mounted on the left of the roadside.
6. Repeat R4-1 at 1 km intervals minimum.



ADT	MAXIMUM DURATION BEFORE MARKINGS ARE REQUIRED
≤ 1000	14 Days
> 1000	3 Days

U.S. DEPARTMENT OF TRANSPORTATION
 FEDERAL HIGHWAY ADMINISTRATION
 EASTERN FEDERAL LANDS HIGHWAY DIVISION

METRIC STANDARD

**VEHICLE POSITIONING GUIDES
 FOR TEMPORARY USE WITH
 UNMARKED PAVEMENTS**

DETAIL APPROVED FOR USE 2/2007
 REVISION: 02/07

DETAIL
EM635-14

NO SCALE

9/20/2007 9:04:32 AM M:\Standard\EF\LD_Standards & Details\8\sf63514.dwg