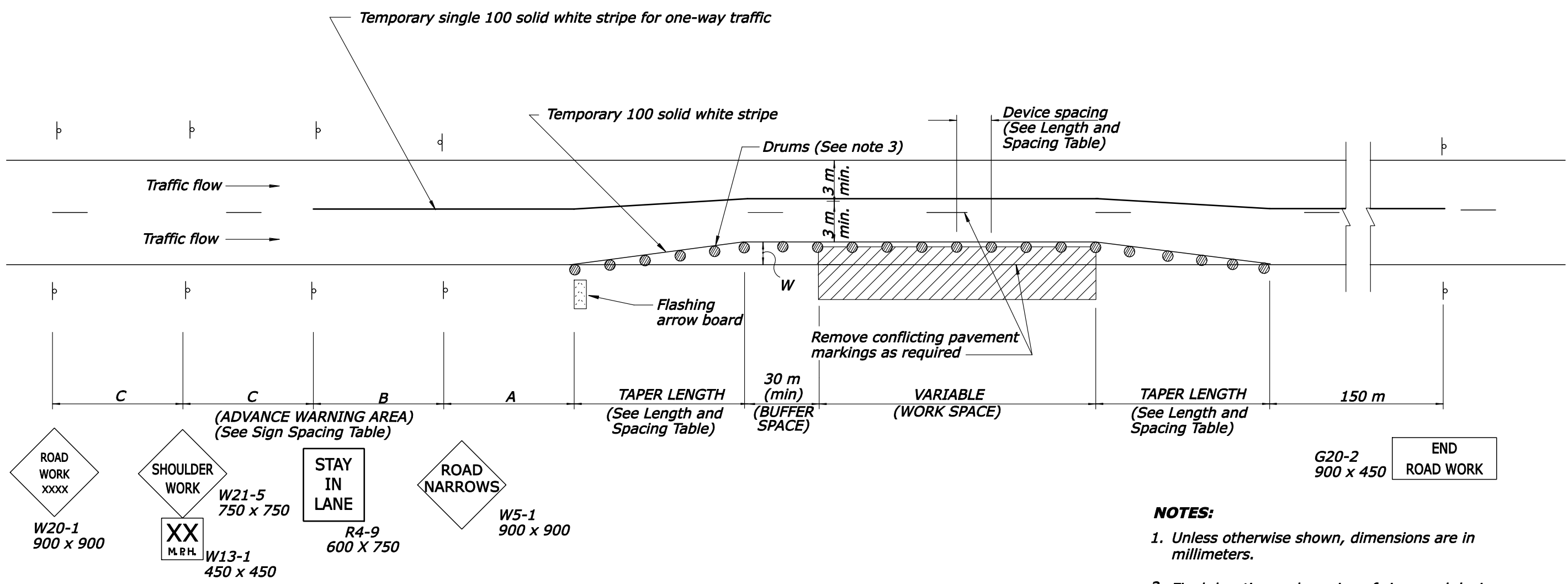


TYPICAL APPLICATION: ONE WAY, TWO LANE ROADWAY, CLOSING PARTIAL LANE WIDTH AND SHOULDER



LENGTH AND SPACING TABLE

APPROACH SPEED		MINIMUM TAPER LENGTH IN METERS	LENGTH OF BUFFER SPACE IN METERS	CHANNELIZING DEVICE SPACING	
*MILES PER HOUR	*KILOMETERS PER HOUR			TAPER AREA	WORK SPACE
SPACING IN METERS					
25	40	Taper formula: $L = \frac{WS^2}{310}$ for speeds of 65 km/h or less $L = \frac{W \times S}{3.2}$ for speeds of 70 km/h or greater	20	8	15
30	50		25	9	18
35	55		35	10	21
40	65	Where: L = Minimum length of taper W = Width of offset in meters S = Numerical value of posted speed limit prior to work area or 85 percentile speed in kilometers per hour	50	12	24
45	70		60	14	27
50	80		85	15	30
55	90		105	16	30

SIGN SPACING TABLE

ROAD TYPE	Recommended Distance Between Signs (meter)		
	A	B	C
≤ 35	60	60	60
40-50	105	105	105
55	150	150	150
Expressway/Urban Parkway	300	500	800

- NOTES:**
- Unless otherwise shown, dimensions are in millimeters.
 - Final location and spacing of signs and devices may be changed to fit field conditions as approved by the CO.
 - For operations that require a shoulder closure for a day or less, drums may be substituted with cones, type A, in the Work Area.
 - Repeat signs on both sides of the roadway.

* Speed is based on the regulatory posted speed and not the traffic control warning speed.

NO SCALE

U.S. DEPARTMENT OF TRANSPORTATION
FEDERAL HIGHWAY ADMINISTRATION
EASTERN FEDERAL LANDS HIGHWAY DIVISION

METRIC STANDARD

**CONSTRUCTION TRAFFIC CONTROL
ONE WAY, TWO LANE ROAD SHOULDER
WORK WITH MINOR ENCROACHMENT
(WITHOUT BARRIER)**

DETAIL APPROVED FOR USE	DETAIL
REVISED: 03/07	EM635-08

8:53:10 AM M:\Standards\NEFLD_Standards & Details\Va\sf63508_detail.dgn 9/20/2007