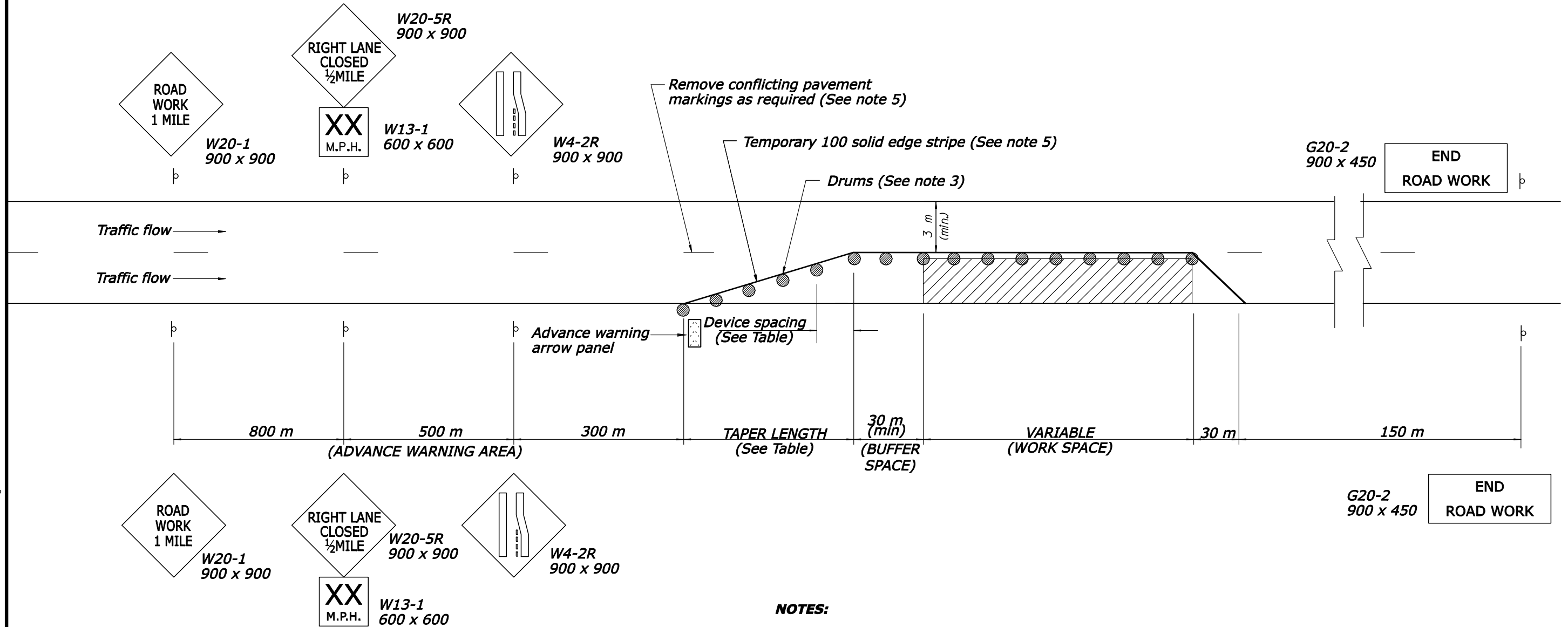


TYPICAL APPLICATION: ONE WAY, TWO LANE ROADWAY, CLOSING ONE LANE



LENGTH AND SPACING TABLE

APPROACH SPEED		MINIMUM TAPER LENGTH			CHANNELIZING DEVICE SPACING	
		LANE WIDTH			TAPER AREA	WORK SPACE
* MILES PER HOUR	* KILOMETERS PER HOUR	3	3.3	3.6		
25	40	35	35	40	8	15
30	50	50	55	60	9	18
35	55	60	70	75	10	21
40	65	85	95	100	12	24
45	70	140	155	170	14	27
50	80	160	175	190	15	30
55	90	180	200	210	16	30

* Speed is based on the regulatory posted speed and not the traffic control warning speed.

NOTES:

1. Unless otherwise shown, dimensions are in millimeters.
2. Final location and spacing of signs and devices may be changed to fit field conditions as approved by the CO.
3. For operations that require a lane closure for a day or less, drums may be substituted with cones, type A in the work area.
4. Right lane closure is shown. For left lane closure, substitute W20-5R and W4-2R with W20-5L and W4-2L.
5. For long-term operations (operations where the lane is continuously closed for more than three days) remove conflicting pavement markings and place edge line as shown.

NO SCALE

U.S. DEPARTMENT OF TRANSPORTATION FEDERAL HIGHWAY ADMINISTRATION EASTERN FEDERAL LANDS HIGHWAY DIVISION	
METRIC STANDARD	
CONSTRUCTION TRAFFIC CONTROL SINGLE LANE CLOSURE LAYOUT	
DETAIL APPROVED FOR USE	DETAIL
REVISED: 07/02 03/07	EM635-05

9/20/2007 8:39:54 AM M:\Standard\EF.LHD_Standards & Details\83505\sf63505_detail.dgn