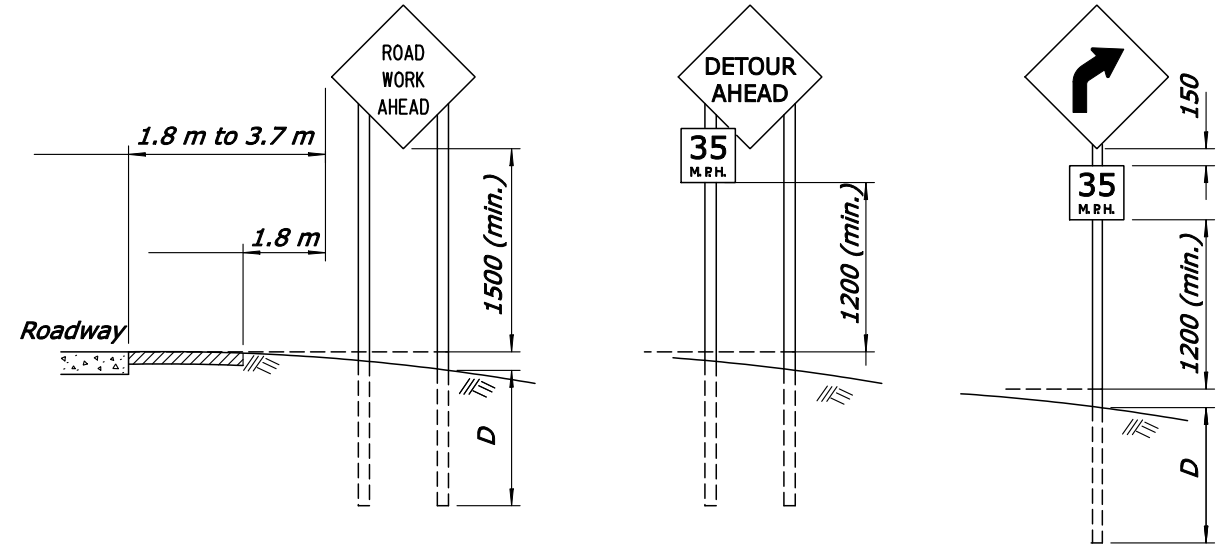
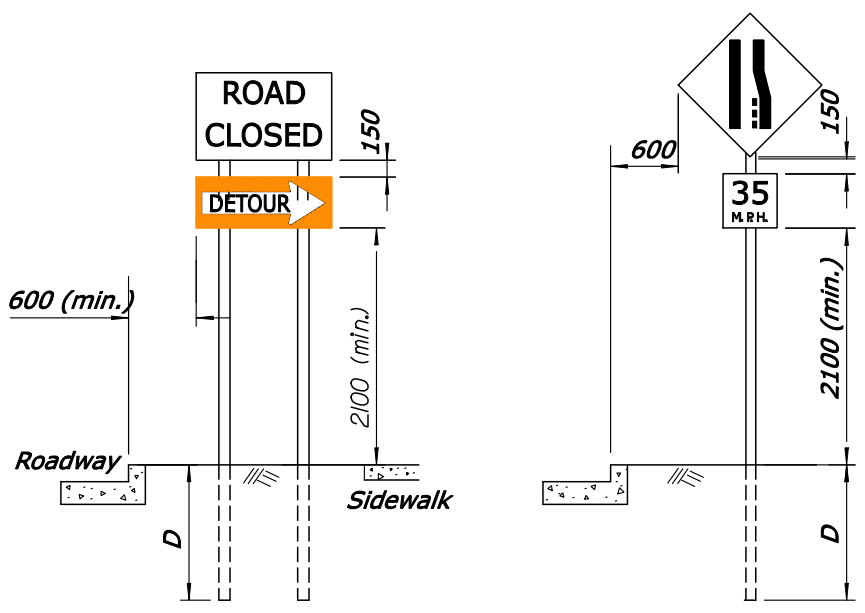


NOTES:

1. Unless otherwise shown, dimensions are in millimeters.
2. Mount signs that are wider than 900 mm or larger than 1 square meter on two or more posts. See Table.
3. All lumber dimensions are nominal.
4. Alternate details for portable signs are acceptable provided the sign mounts hold the sign face in a vertical plane. Portable signs may be mounted lower than fixed signs when approved by the CO. Ensure all portable sign supports meet the requirements of NCHRP-350 for crashworthiness.
5. When parking is permitted within 60 meters of the sign, mount the sign a minimum of 2.1 meters above the pavement surface.
6. When approved by the CO and the Utility Company, utility poles may be used for sign mounting.
7. For posts greater than 100 x 100 mm, see the Breakaway Support Detail. If breakaway design cannot be used, due to post spacing, the sign should be placed outside the clear zone or be shielded by barrier.
8. For signs requiring posts 150 x 150 mm and greater, signs are considered to be non-breakaway if multiple posts are required and posts cannot be spaced a minimum of 2 meters apart.



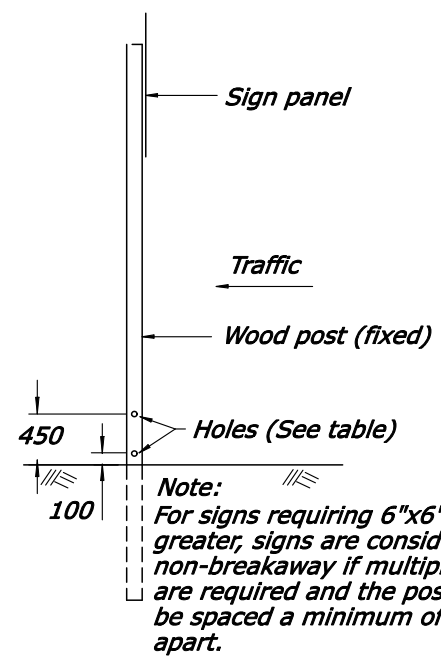
RURAL AREA
RURAL AREA



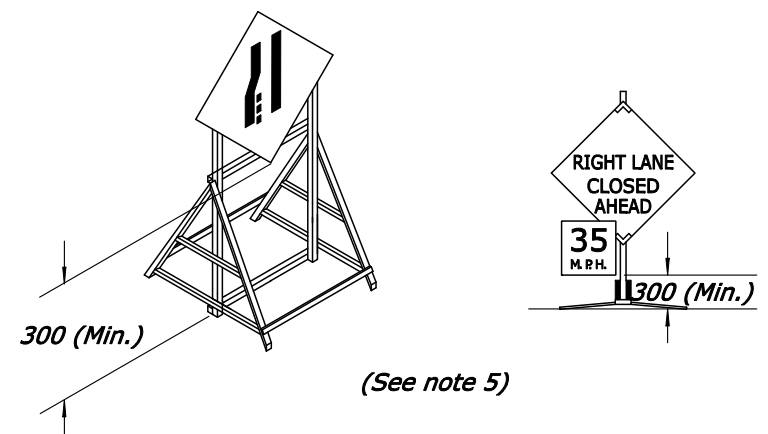
URBAN AREA

FIXED ROADWAY SIGNS

BREAKAWAY SUPPORT DETAIL
(FIXED SIGNS - 100 x 150 mm AND GREATER POSTS)



Note:
For signs requiring 6"x6" posts and greater, signs are considered to be non-breakaway if multiple posts are required and the posts cannot be spaced a minimum of 7 feet apart.



PORTABLE SIGNS
(See note 4)

Post size	D	Hole Dia.	Maximum Sign Area -square meters			
			1 Post	2 Posts	3 Posts	4 Posts
100 x 100	1200	None Req'd	1	2		
100 x 150	1200	40		3	4.5	6.5
150 x 150	1500	50		4.5	7	9
150 x 200	1500	75		8	11.5	15

NO SCALE

U.S. DEPARTMENT OF TRANSPORTATION
FEDERAL HIGHWAY ADMINISTRATION
EASTERN FEDERAL LANDS HIGHWAY DIVISION

METRIC DETAIL

CONSTRUCTION TRAFFIC CONTROL SIGN MOUNTING

DETAIL APPROVED FOR USE 2/2007
REVISID: 02/07 06/07

DETAIL
EM635-01

10/3/2007 12:47:47 PM M:\Standard\EF\LD_Detail\Drawings\8\st63501_detail.dgn