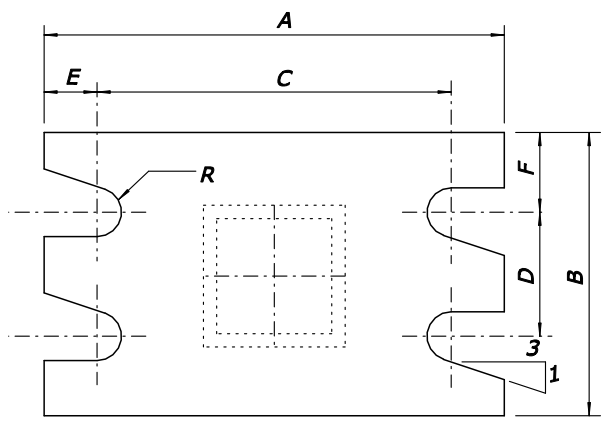


POST SIZE	NOMINAL SIZE (mm)	STUB		FOOTING	
		PROJ.	LENGTH	DIA.	MINIMUM DEPTH
a	50 x 50	100	600	300	900
b	75 x 100	100	600	375	900
c	100 x 150	100	600	375	900

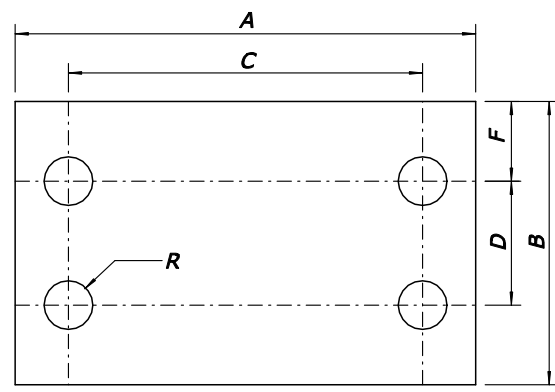
POST SIZE	NOMINAL SIZE (mm)	BOLT SPECIFICATIONS	BASE CONNECTION DATA TABLE (mm)									
			A	B	C	D	E	F	t <sub>1</sub>	t <sub>2</sub>	w	R
a	50 x 50	M16 x 65 HS	165	100	125	40	20	30	15.88	4.76	4	18
b	75 x 100	50 N.m	215	100	175	40	20	30	15.88	4.76	6	18
c	100 x 150	M16 x 75 HS 50 N.m	250	125	215	65	17.5	30	19.05	6.35	8	18

POST SIZE	G	H	J	K	L	M	N	d <sub>1</sub>	t <sub>3</sub>	c <sub>1</sub>	BOLT	TORQUE N.m
a	100	55	28	50	22	14	17	12	6.35	5	M10	25
b	100	55	28	75	31	22	17	14	7.94	5	M12	25
c	115	60	32	100	44	28	23	18	9.52	10	M16	25

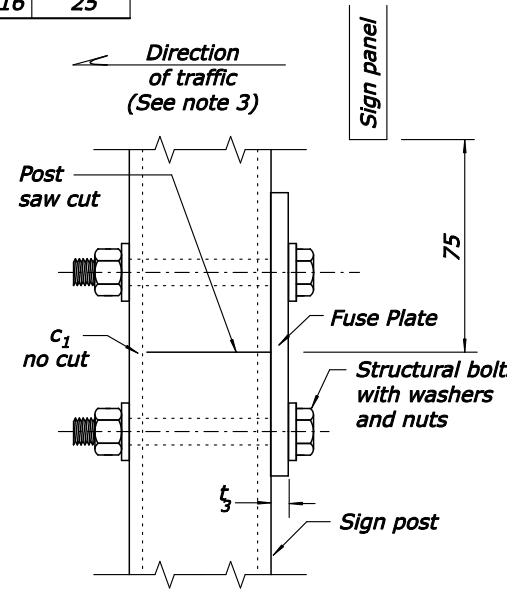
- NOTES:**
1. Unless otherwise shown, dimensions are in millimeters.
  2. Breakaway design is not required for signs placed behind protective barriers.
  3. Install breakaway assembly in the direction of major traffic.
  4. Use the multiple post breakaway detail on single posts in medians where exposed to opposing lanes of traffic.
  5. Use fuse plates on multiple post installations.
  6. Paint the breakaway plates brown to match the final appearance of the weathering steel posts.
  7. Furnish hardware in the metric sizes shown. Equivalent imperial sizes may be used when metric sizes are not available.



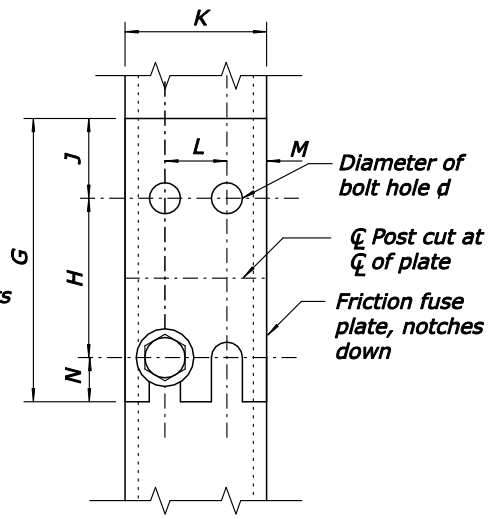
**SECTION A-A  
BREAKAWAY PLATE**



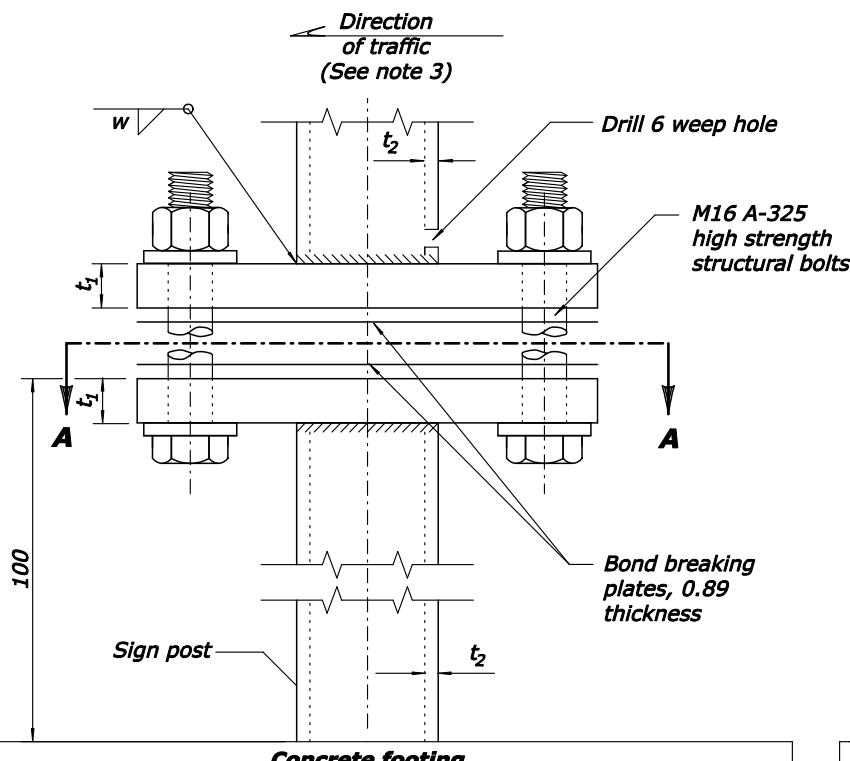
**BOND BREAKING PLATE**



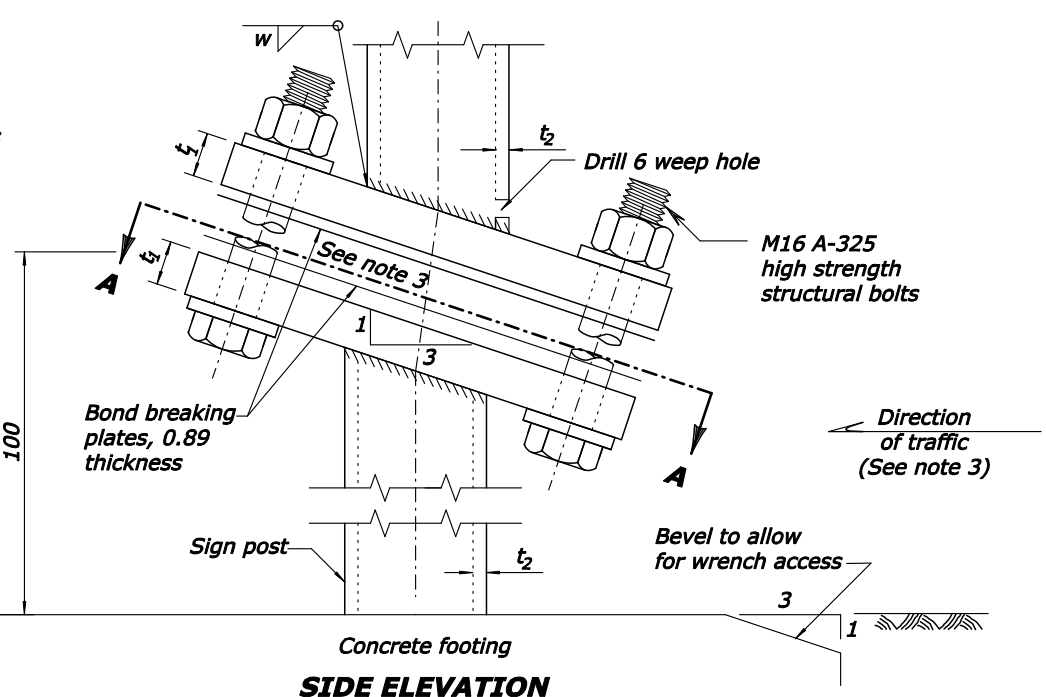
**SIDE ELEVATION  
FUSE PLATE**



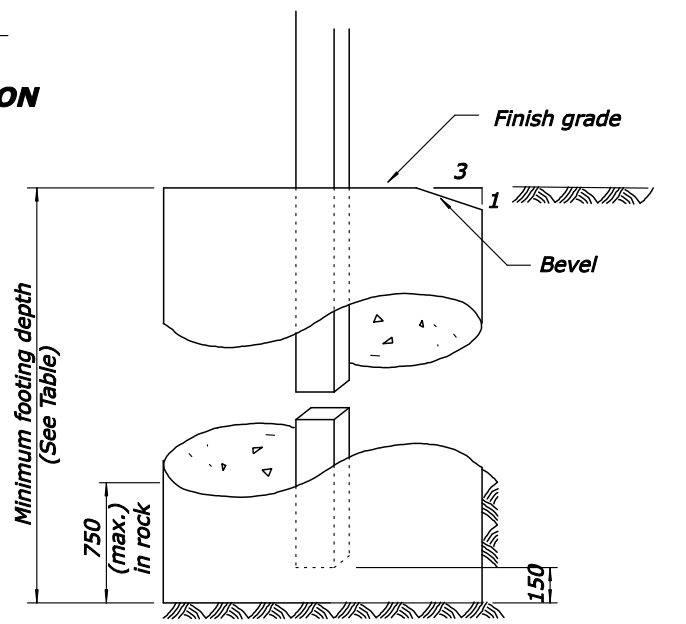
**FRONT ELEVATION  
(See Note 5)**



**SIDE ELEVATION  
(See Note 4)  
MULTIPLE POST**



**SIDE ELEVATION  
SINGLE POST**



**CONCRETE FOOTING DETAILS**

U.S. DEPARTMENT OF TRANSPORTATION  
FEDERAL HIGHWAY ADMINISTRATION  
EASTERN FEDERAL LANDS HIGHWAY DIVISION

METRIC STANDARD

**BREAKAWAY SIGN SUPPORT,  
WEATHERING STEEL**

DETAIL APPROVED FOR USE  
REVISED: 07/98 03/07

DETAIL  
EM633-02

NO SCALE

8-03-02 AM M:\Standards\EF.LHD\_Standards & Details\8-03-02\ef63302\_detail.dgn 9/20/2007