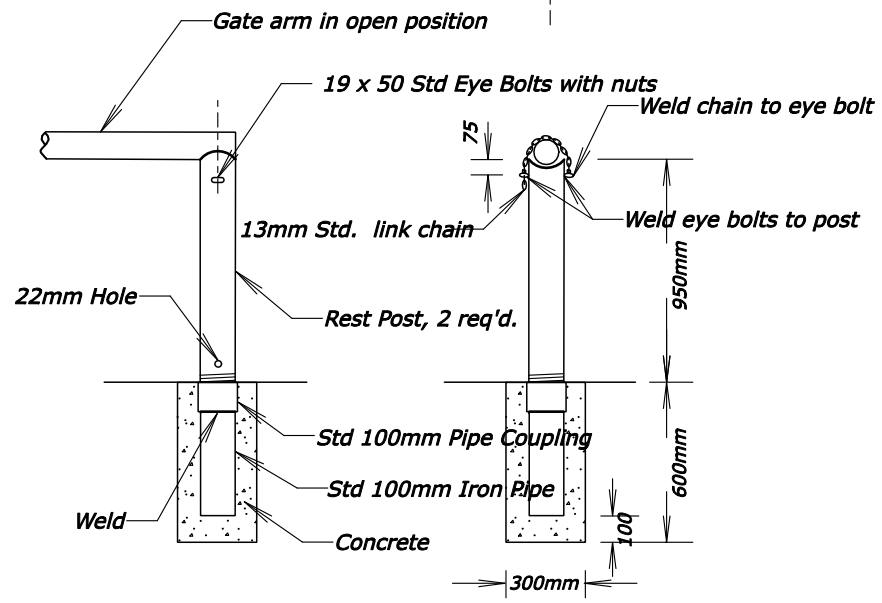
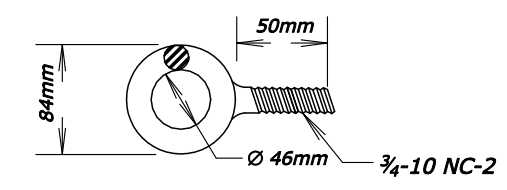
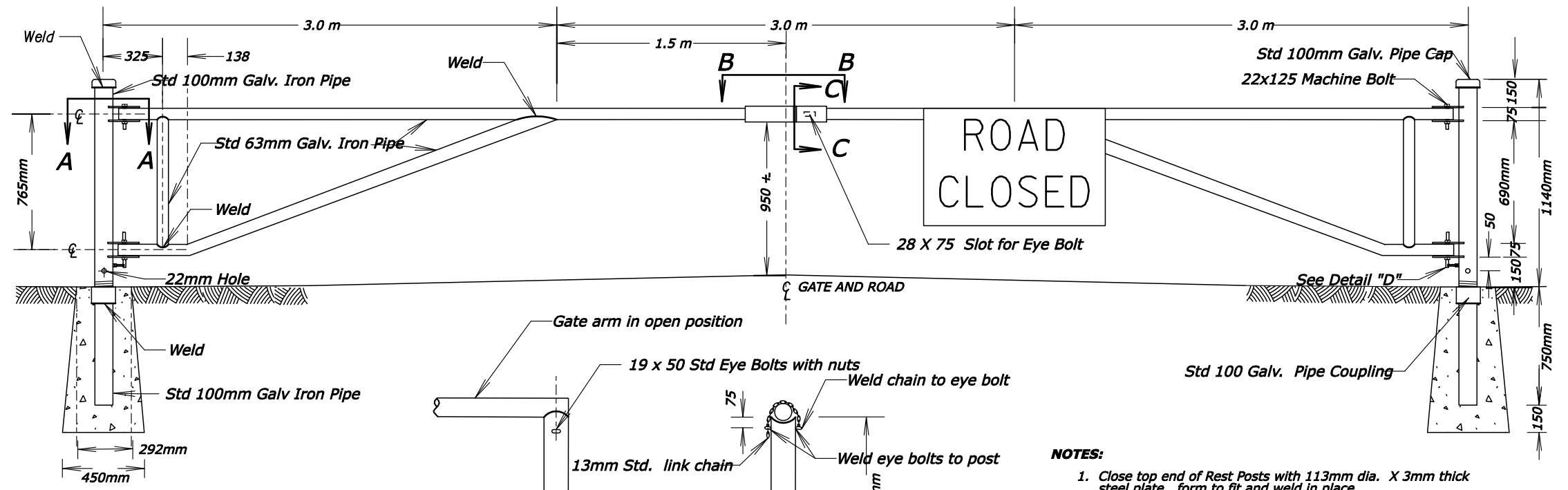
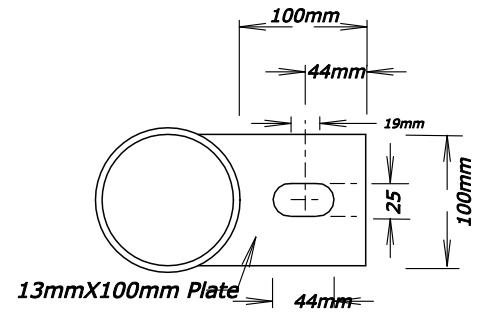
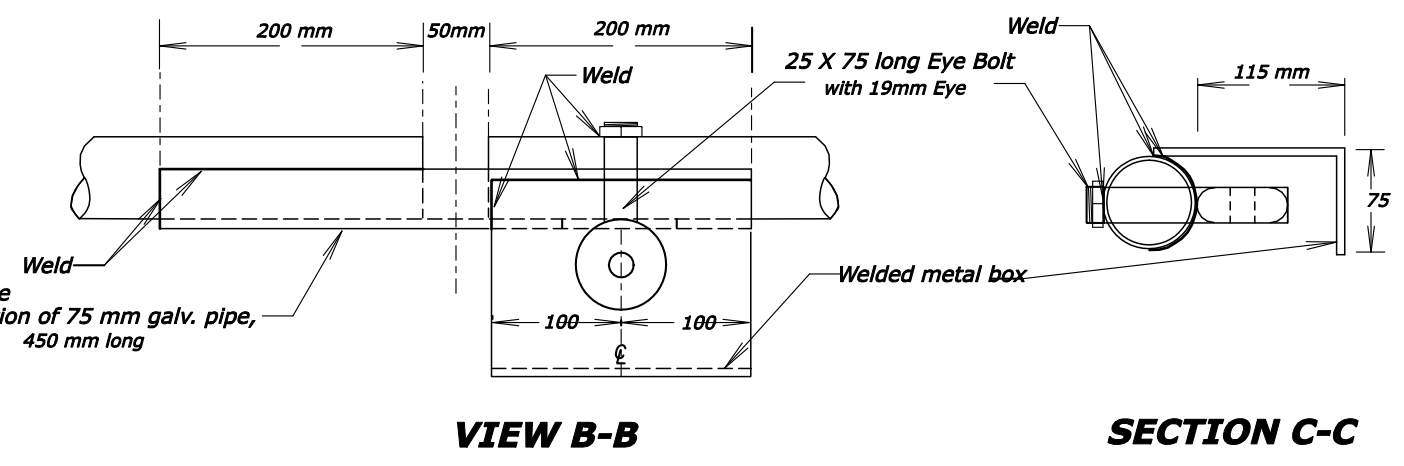
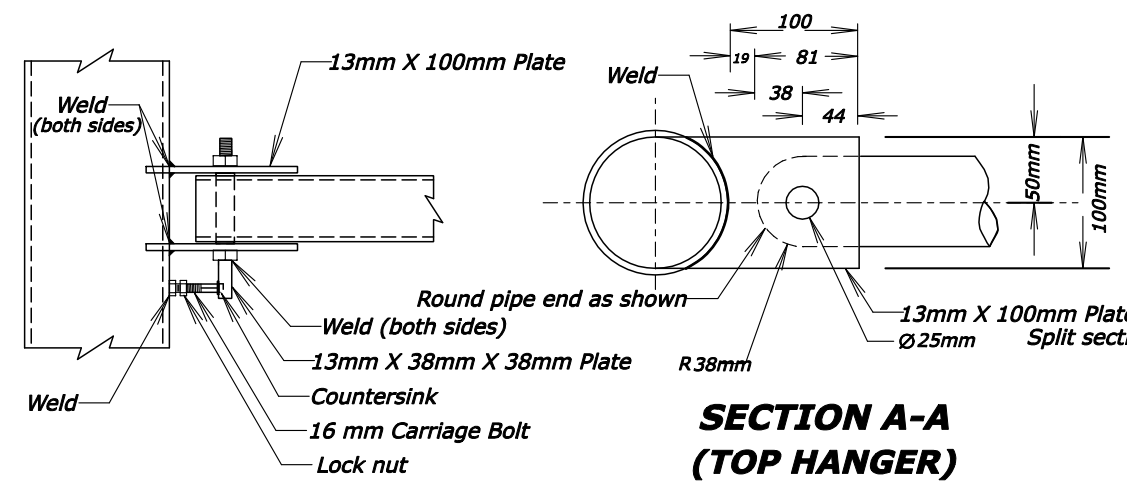


REG	STATE	PROJECT	SHEET NO.
SE	LA	RRP-LOP 10(2)	



- NOTES:**
1. Close top end of Rest Posts with 113mm dia. X 3mm thick steel plate, form to fit and weld in place.
 2. Gates and posts to be painted either alternating black and reflectorized white 100mm stripes at 45° in configuration shown or galvanized or as directed by CO. Alternately, tape may be used to form the stripes.
 3. Galvanize all metal parts not painted.
 4. Concrete shall conform to Section 601.
 5. Unless otherwise noted, all dimensions are in millimeters.
 6. Furnish hardware in the metric sizes shown. Equivalent imperial sizes may be used when metric sizes are not available.

U.S. DEPARTMENT OF TRANSPORTATION
FEDERAL HIGHWAY ADMINISTRATION
EASTERN FEDERAL LANDS HIGHWAY DIVISION

METRIC DETAIL

**METAL GATE
30 FEET**

DETAIL APPROVED FOR USE
REVISED: 3/08

DETAIL
EM619-06

3/27/2008 12:17:19 PM Z:\Standards\temp\st61906_detail.dgn