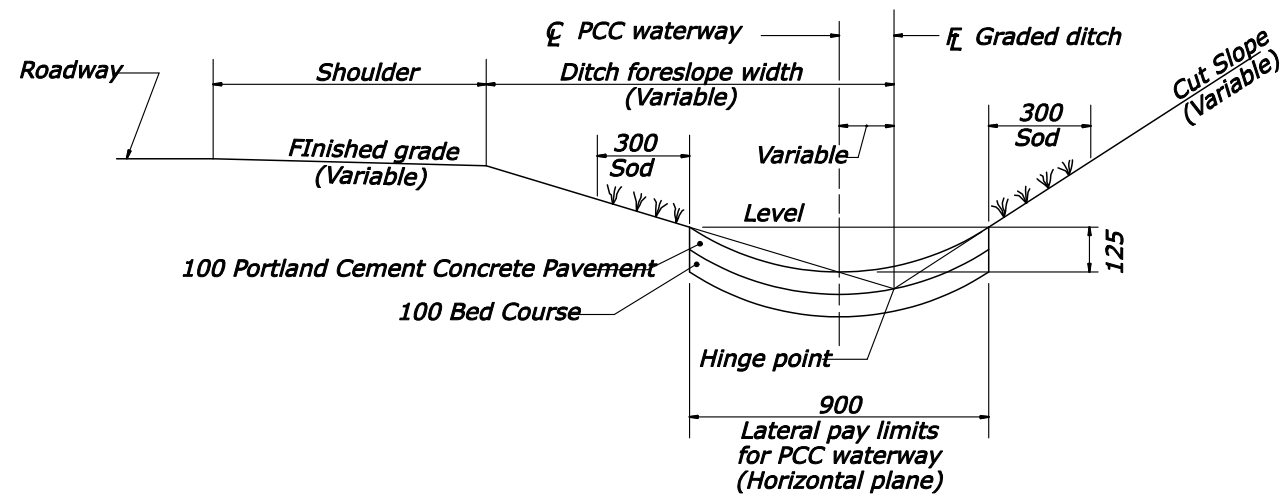


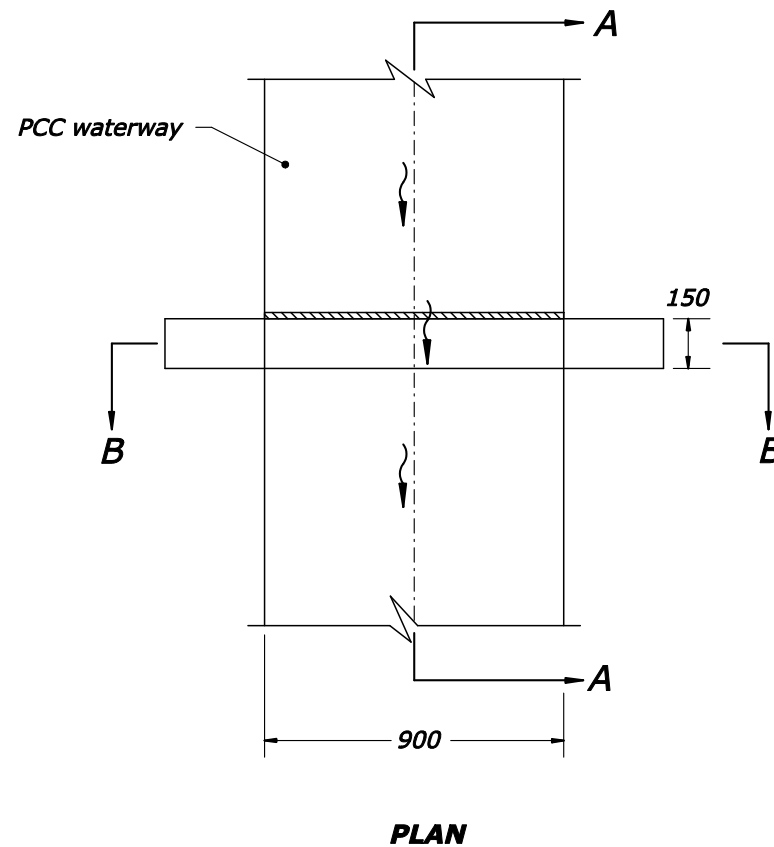
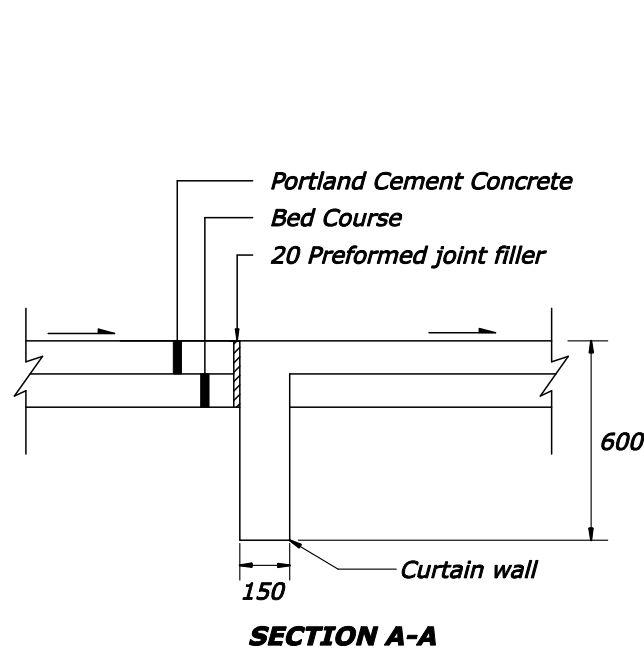
REG	STATE	PROJECT	SHEET NO.
SE	LA	RRP-LOP 10(2)	



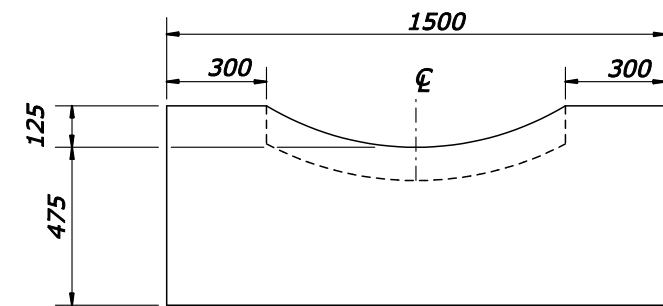
NOTES:

1. Unless otherwise shown, dimensions are in millimeters.
2. The approximate shape of the Portland Cement Concrete waterway is an arc with a radius of 880 mm.
3. At inlets and other special locations, widen and shape paved waterway to drain.
4. Construct Portland Cement Concrete waterway in uniform sections 6 meters in length, except closure sections are not less than 1.5 meters in length. Place expansion joints, with curtain walls at 30 meter intervals.
5. At the outlet end of each Portland Cement Concrete waterway, construct a curtain wall on the downstream end of the last section of waterway.

PORTLAND CEMENT CONCRETE WATERWAY



PLAN



SECTION B-B

EXPANSION JOINT FOR PORTLAND CEMENT CONCRETE WATERWAY

NO SCALE

U.S. DEPARTMENT OF TRANSPORTATION
FEDERAL HIGHWAY ADMINISTRATION
EASTERN FEDERAL LANDS HIGHWAY DIVISION

METRIC DETAIL

**PORTLAND CEMENT
CONCRETE WATERWAY
TYPE 4**

DETAIL APPROVED FOR USE
REVISED: 01/08

DETAIL
EM608-01