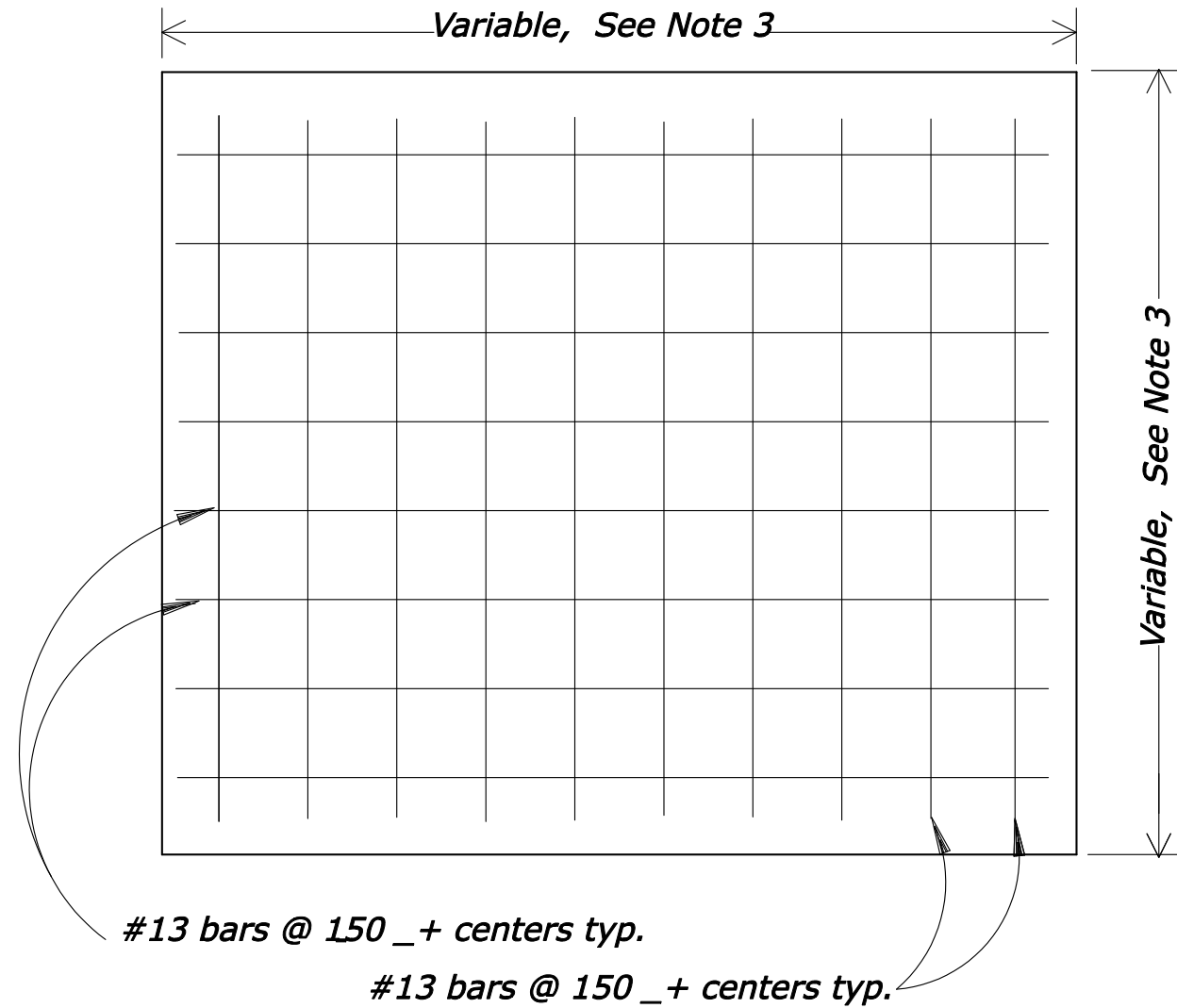
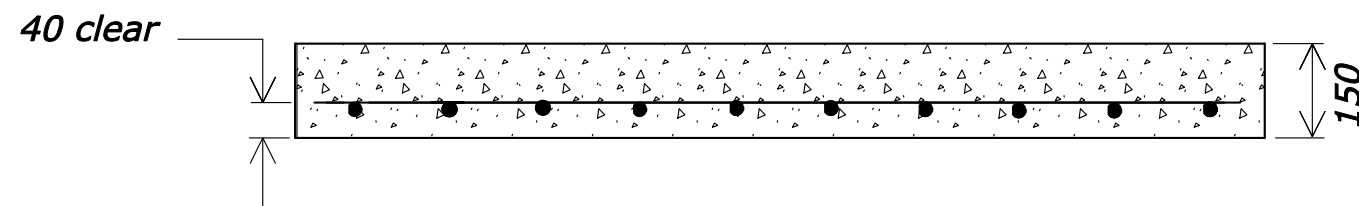


REG	STATE	PROJECT	SHEET NO.
SE	LA	RRP-LOP 10(2)	



PLAN



SECTION

NOTES:

1. Unless otherwise shown, dimensions are in millimeters.
2. Set concrete cap on a 50 mm mortar bed.
3. Field measure the length and width of the caps to completely cover the existing inlets.
4. Cut the top of the existing inlets to a depth such that 150 mm remain above the highest existing culvert tying into the inlet.
5. Provide a 40 mm clearance to the outside face of all reinforcing bars.

NO SCALE

3/25/2008 11:39:32 AM Z:\Standards\Temp\st60408_detail.dgn

U.S. DEPARTMENT OF TRANSPORTATION FEDERAL HIGHWAY ADMINISTRATION EASTERN FEDERAL LANDS HIGHWAY DIVISION	
METRIC DETAIL PRECAST CONCRETE INLET CAP	
DETAIL APPROVED FOR USE REVISED: 01/08	DETAIL EM604-08