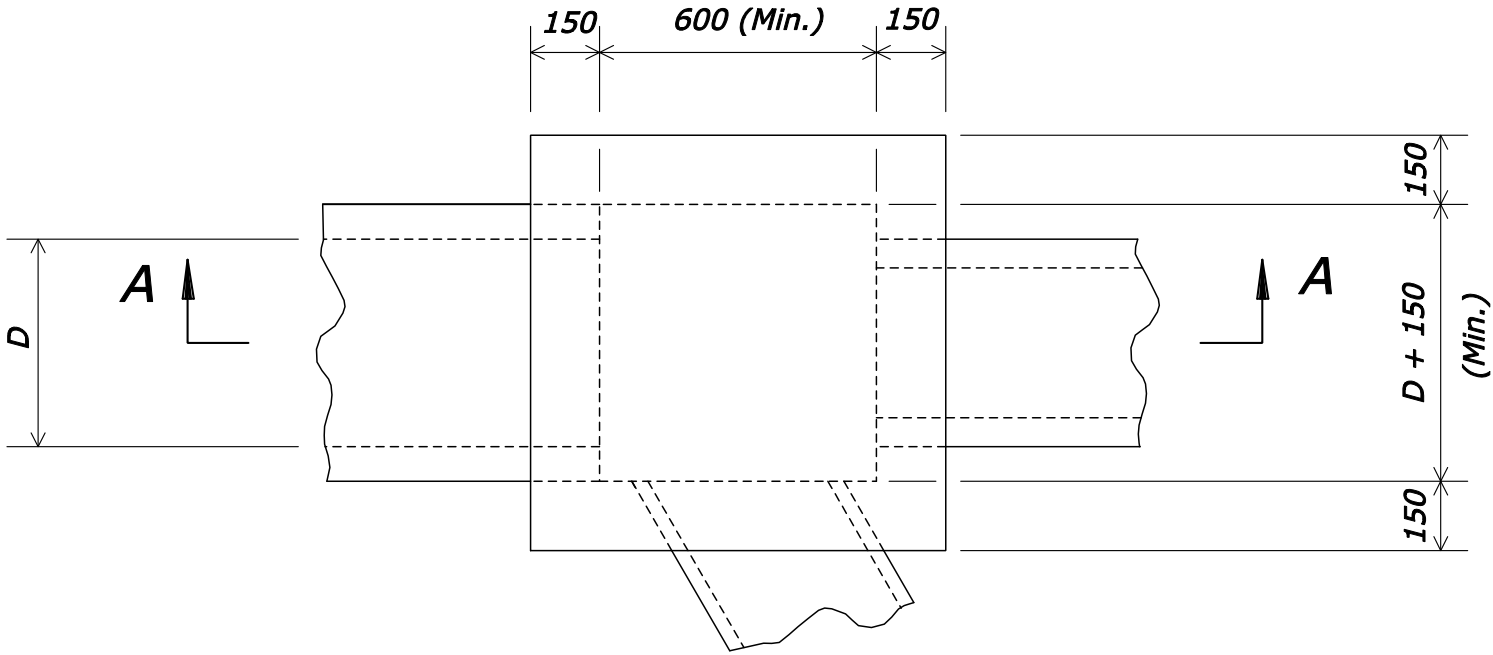


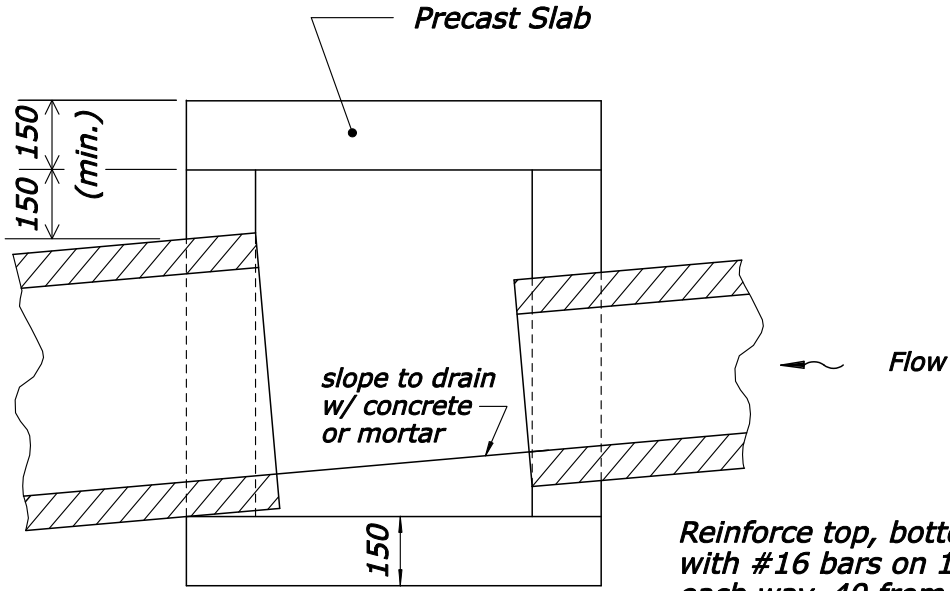
REG	STATE	PROJECT	SHEET NO.
SE	LA	RRP-LOP 10(2)	

**Notes:**

1. Unless otherwise shown, dimensions are in millimeters.
2. At the option of the Contractor, walls less than 1200 mm may be of concrete or concrete block.



**PLAN**



**SECTION A-A**

Reinforce top, bottom, and sides with #16 bars on 150 centers each way, 40 from inside of junction box.

NO SCALE

U.S. DEPARTMENT OF TRANSPORTATION FEDERAL HIGHWAY ADMINISTRATION EASTERN FEDERAL LANDS HIGHWAY DIVISION	
METRIC DETAIL	
<b>JUNCTION BOX</b>	
DETAIL APPROVED FOR USE	DETAIL
REVISED: 01/08	EM604-06